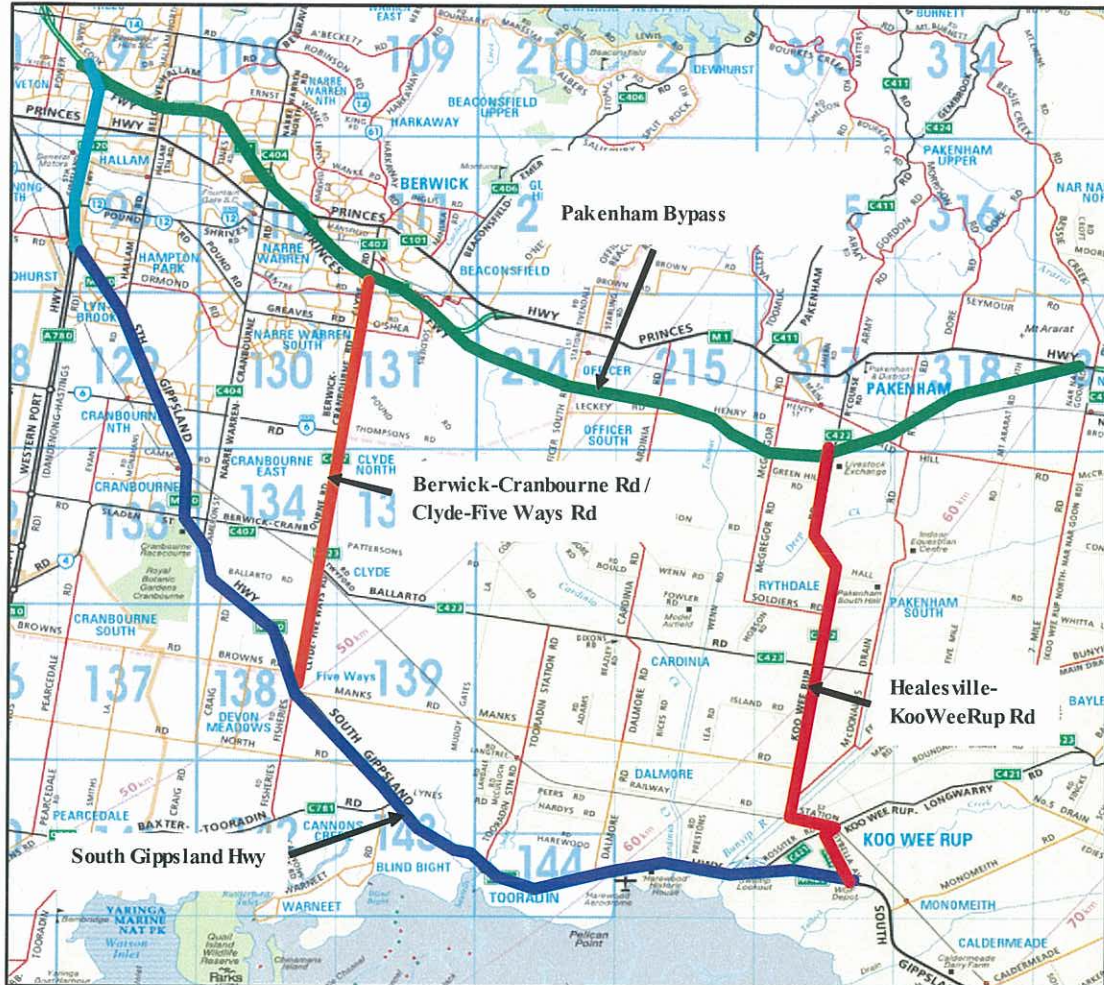


ATTACHMENT A
LOCALITY PLAN



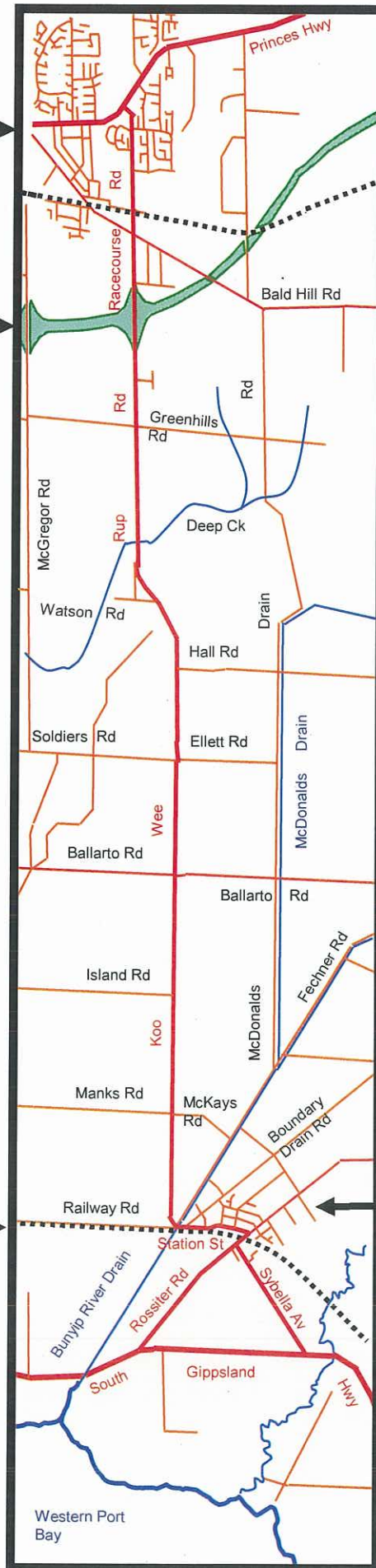
CORRIDOR PLAN

Pakenham Township

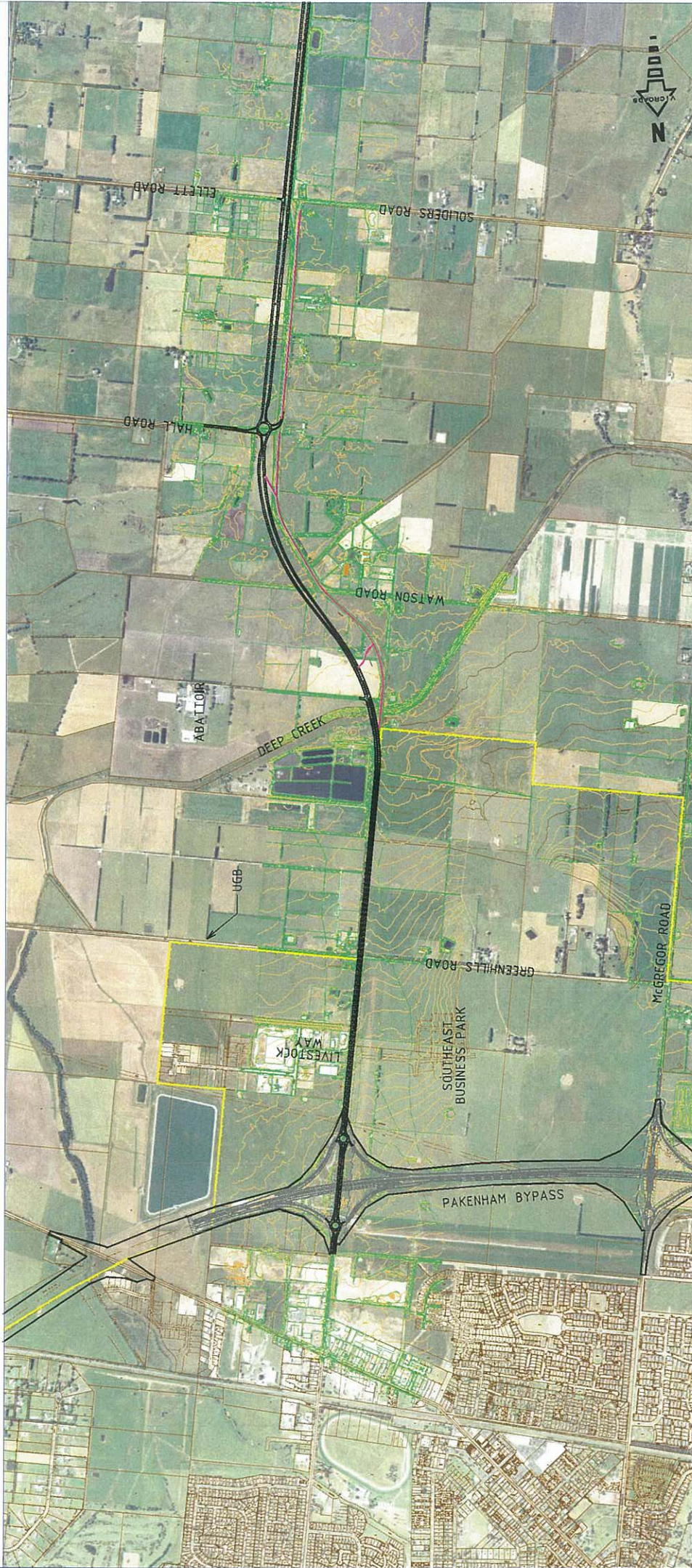
Pakenham Bypass

South Gippsland Railway

Koo Wee Rup Township



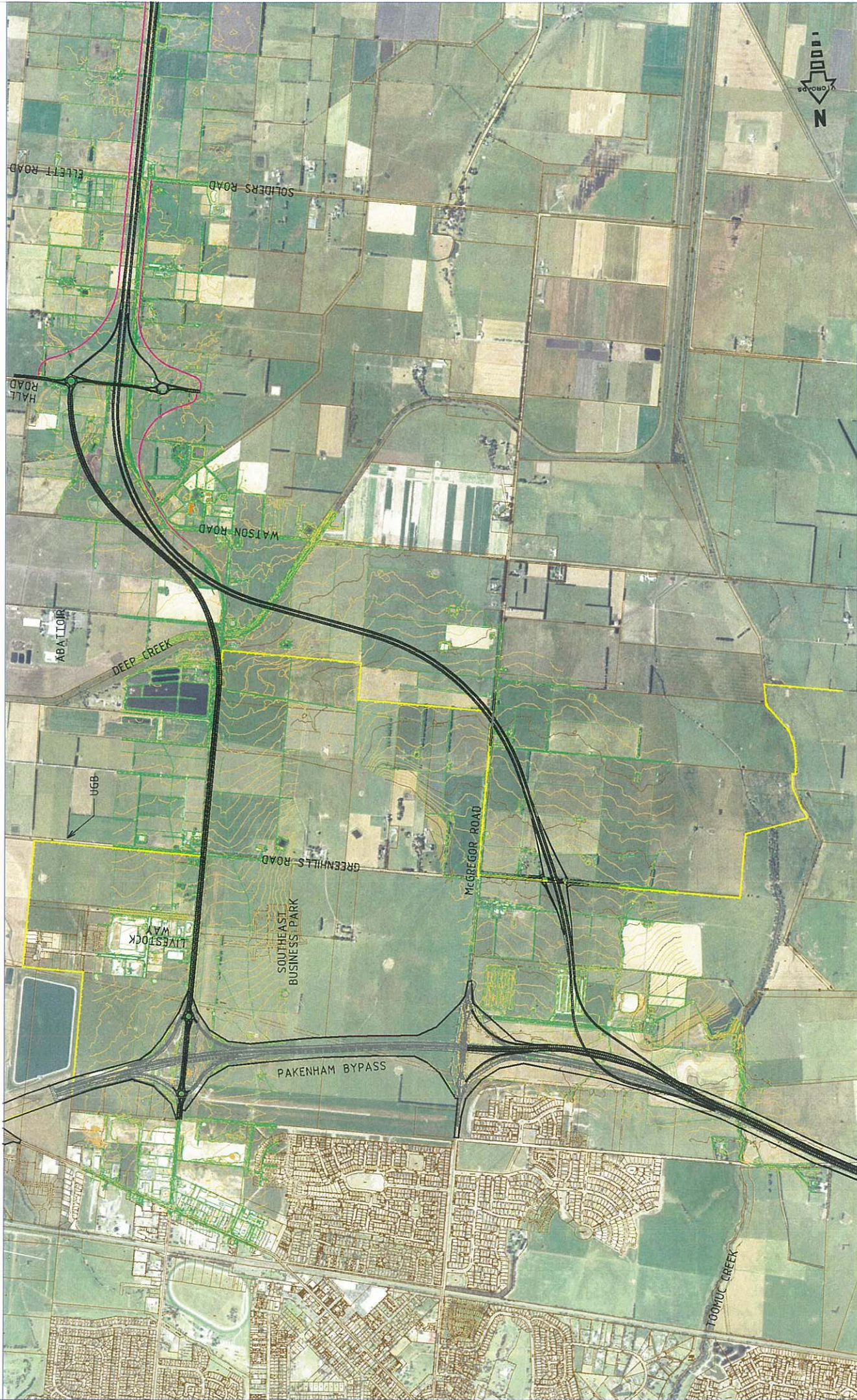
**ATTACHMENT C
PREFERRED OPTION
INITIAL DEVELOPMENT**

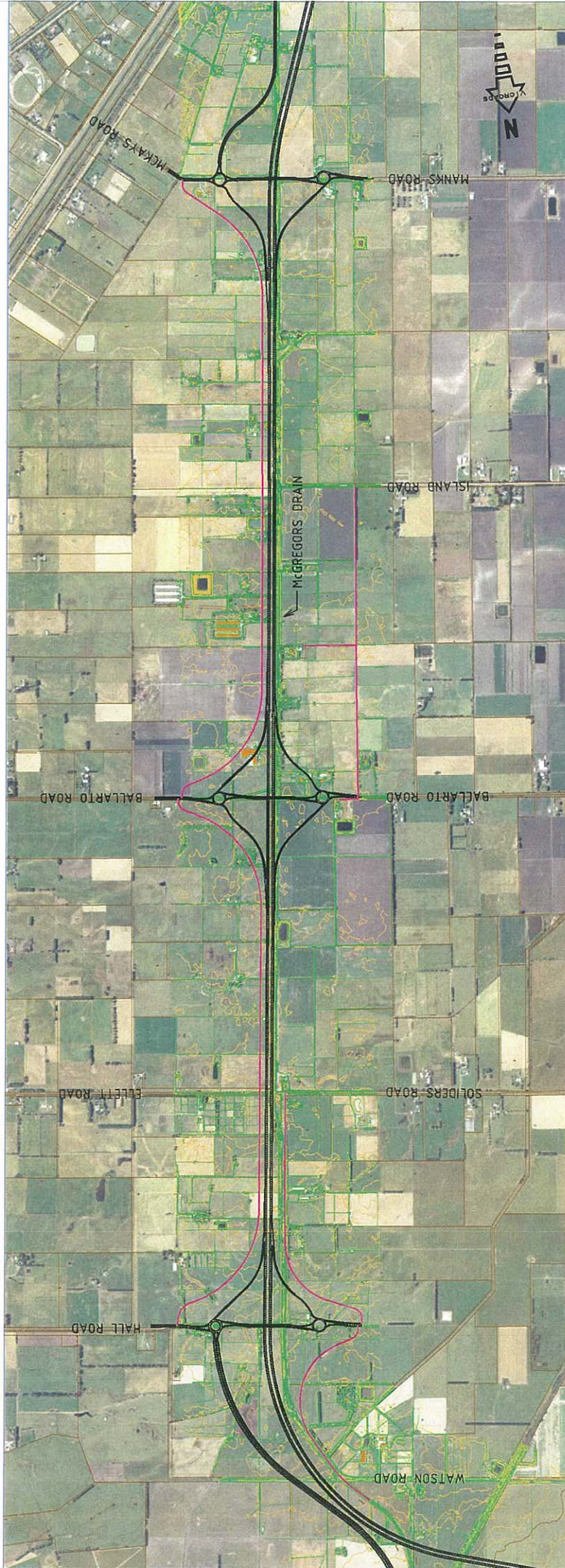






**ATTACHMENT D
PREFERRED OPTION
LONGER-TERM DEVELOPMENT**

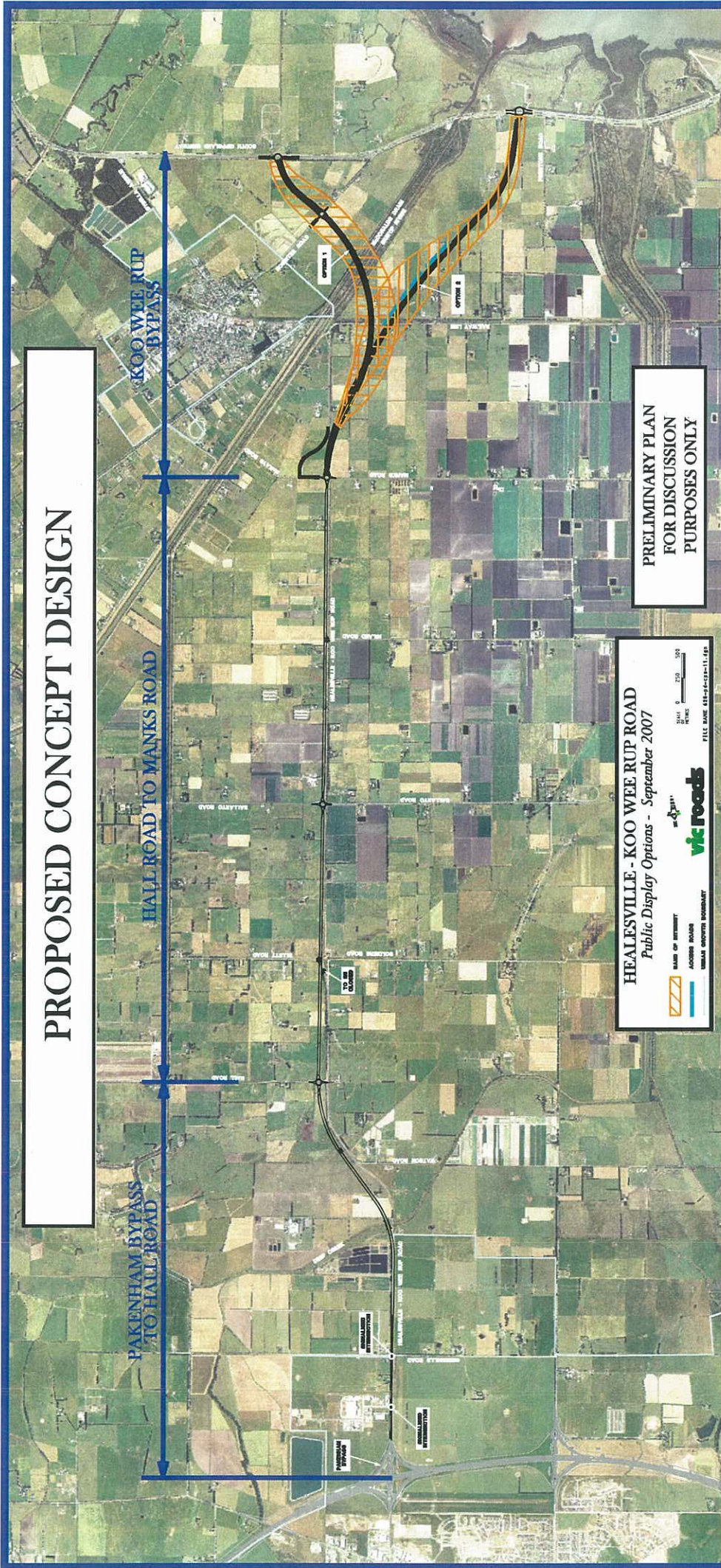






**ATTACHMENT E
DISPLAY PLANS
CONCEPT OPTIONS**

PROPOSED CONCEPT DESIGN



PAKENHAM BYPASS
TO HALL ROAD

HALL ROAD TO MANKS ROAD

KOO WEE RUP
BYPASS

HEALESVILLE - KOO WEE RUP ROAD
Public Display Options - September 2007

SCALE OF INTENSITY
ACROSS BARRIERS
UNRAIL GOVERN BOUNDARY

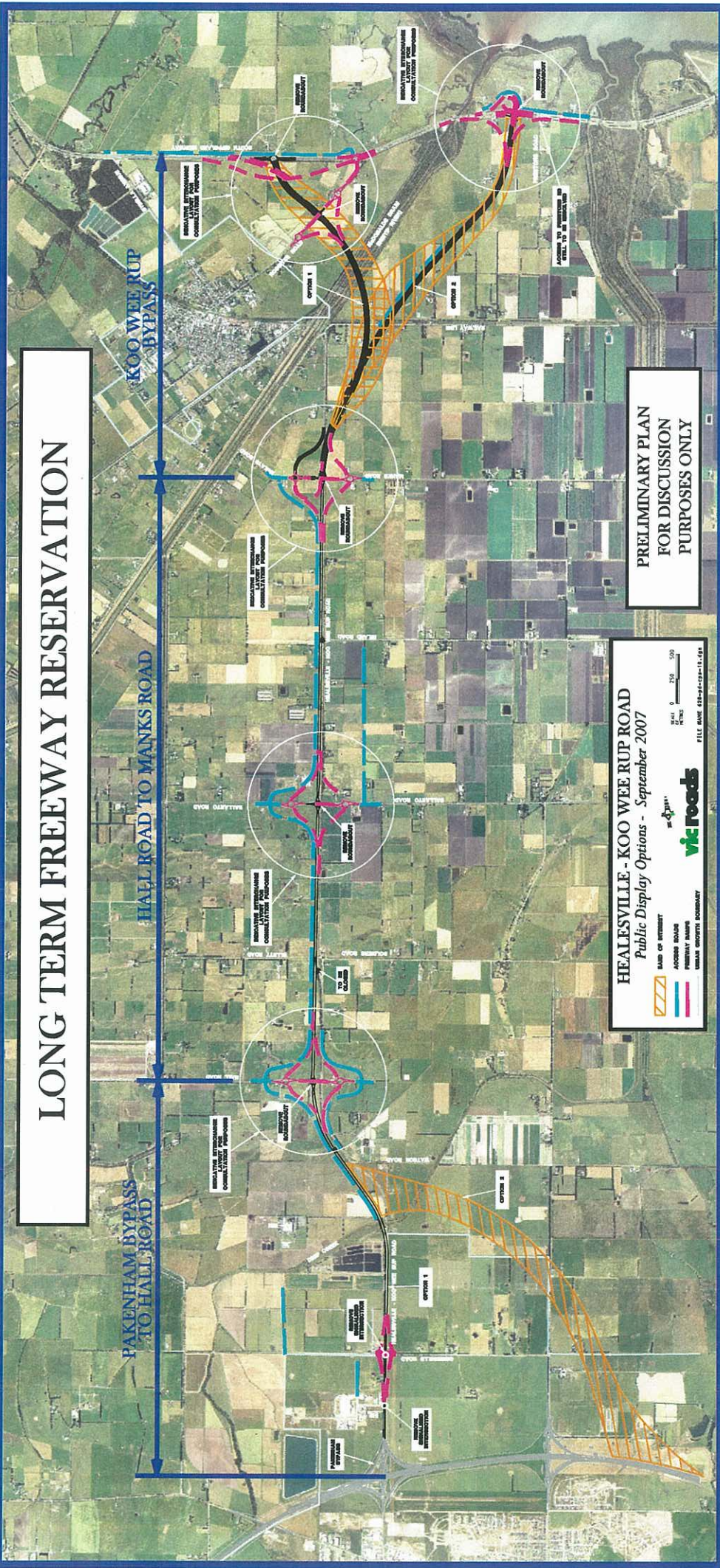
vk roads

SCALE: 0 250 500 METRES

FILE NAME: HSR-2007-111.dwg

PRELIMINARY PLAN
FOR DISCUSSION
PURPOSES ONLY

LONG TERM FREEWAY RESERVATION



FAKENHAM BYPASS TO HALL ROAD

HALL ROAD TO MANKS ROAD

KOO WEE RUP BYPASS

HEALESVILLE - KOOWEE RUP ROAD
 Public Display Options - September 2007

ROAD OF RESERVATION
 ACCESS ROLLS
 UNRAIL CORPUS NECESSARY

0 250 500
 FEET

vik roads
 FULL SCALE DESIGN CONSULTANTS

PRELIMINARY PLAN
 FOR DISCUSSION
 PURPOSES ONLY

ATTACHMENT F
LAND USE

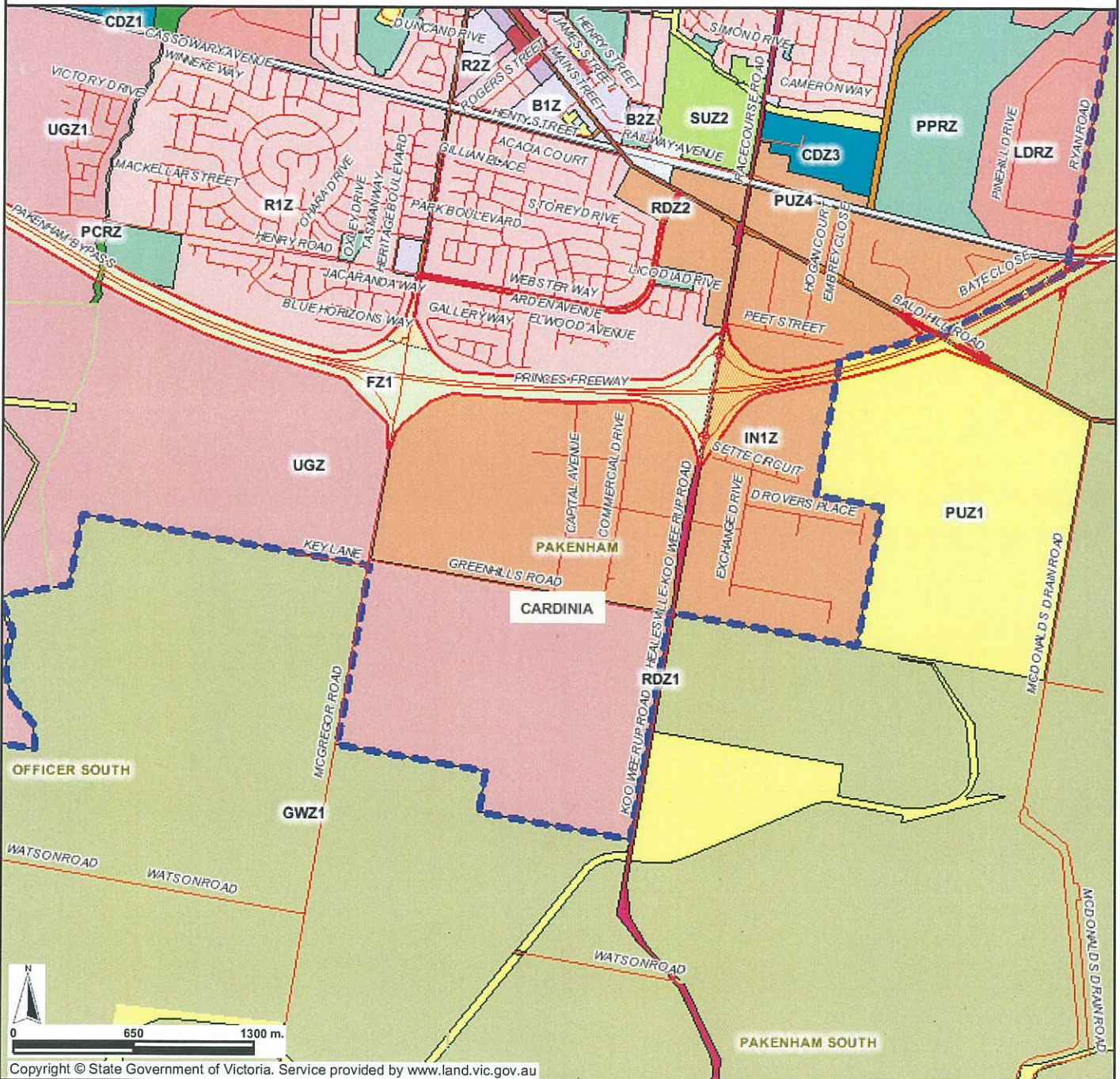


-  - Employment Precincts
-  - Pakenham Sewage Treatment Plant
-  - Export Abattoir
-  - Asparagus Growing Area
-  - Vegetable Packing Shed

**ATTACHMENT G
ZONING**

Planning Map

Department of
Planning and
Community Development



Copyright © State Government of Victoria. Service provided by www.land.vic.gov.au

Legend

<p>WARRNAMBOOL Major Town</p> <p>BRIMBANK Local Government Area</p> <p>Local Government Name</p> <p>Urban Growth Bdy (UGB)</p> <p>Area outside the UGB</p> <p>Investigation Area</p> <p>Land added to UGB since 2005</p>	<p>Public Acquisition</p> <p>ZONES</p> <p>B1Z - Business 1</p> <p>B2Z - Business 2</p> <p>B3Z - Business 3</p> <p>B4Z - Business 4</p> <p>B5Z - Business 5</p> <p>CA - Commonwealth Land (not in scheme)</p> <p>CCZ - Capital City</p> <p>DZ - Dockland</p> <p>ERZ - Environmental Rural</p> <p>FZ - Farming</p> <p>GWAZ - Green Wedge A</p> <p>GWZ - Green Wedge</p> <p>IN1Z - Industrial 1 (cont)</p>	<p>IN2Z - Industrial 2</p> <p>IN3Z - Industrial 3</p> <p>LDRZ - Low Density Residential</p> <p>MUZ - Mixed Use</p> <p>PCRZ - Public Conservation & Resource</p> <p>PDZ - Priority Development</p> <p>PPRZ - Public Park & Recreation</p> <p>PUZ1 - Public Use - Service & Utility</p> <p>PUZ2 - Public Use - Education</p> <p>PUZ3 - Public Use - Health Community</p> <p>PUZ4 - Public Use - Transport</p> <p>PUZ5 - Public Use - Cemetery / Crematorium</p> <p>PUZ6 - Public Use - Local Government</p> <p>PUZ7 - Public Use - Other Public Use</p> <p>R1Z - Residential 1</p> <p>R2Z - Residential 2 (cont)</p>	<p>R3Z - Residential 3</p> <p>RAZ - Rural Activity</p> <p>RCZ - Rural Conservation</p> <p>RDZ1 - Road - Category 1</p> <p>RDZ2 - Road - Category 2</p> <p>RLZ - Rural Living</p> <p>RUZ - Rural</p> <p>SUZ - Special Use</p> <p>TZ - Township</p> <p>UFZ - Urban Floodway</p> <p>UGZ - Urban Growth</p>
---	---	--	---

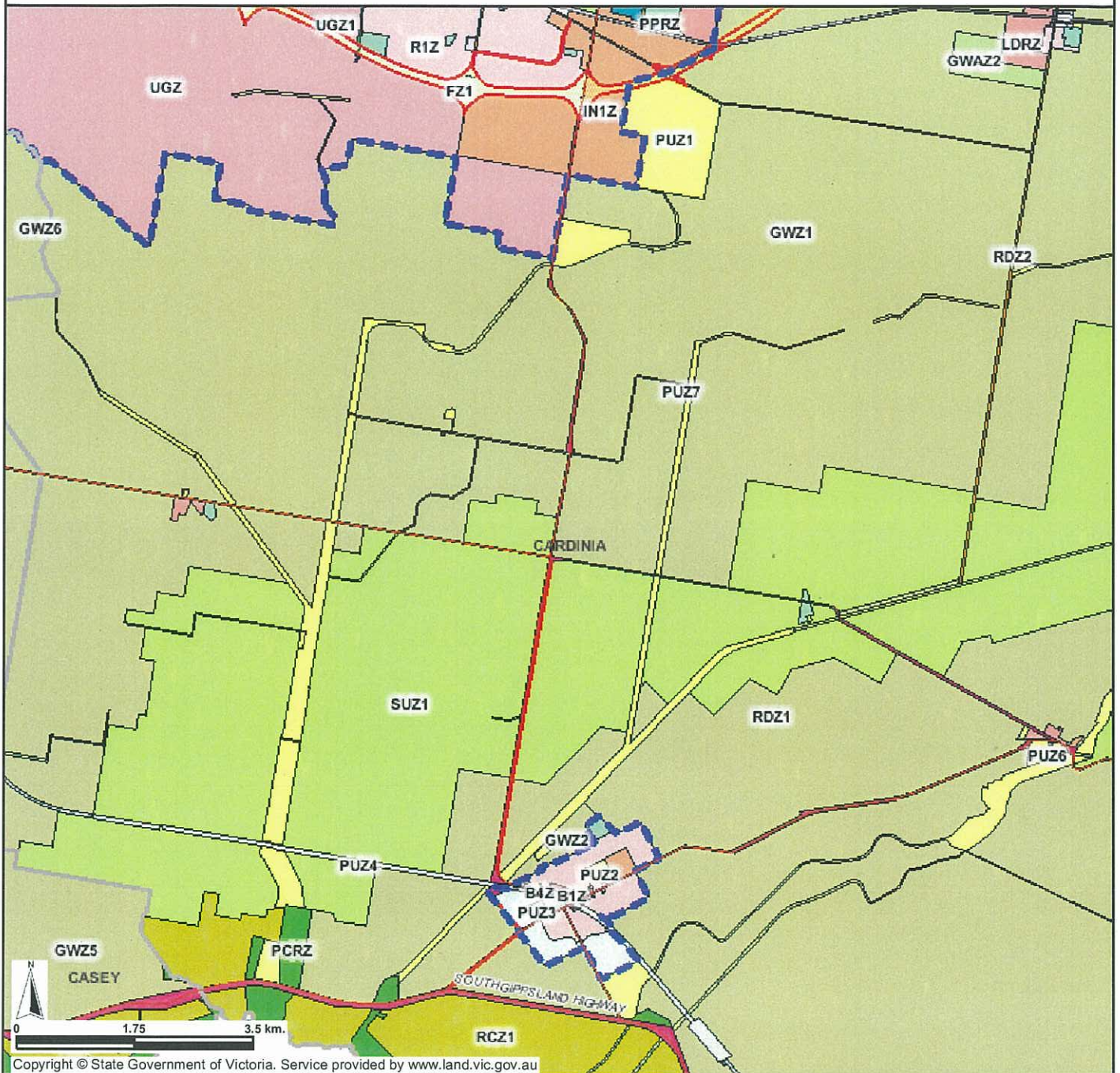
Disclaimer: This map is a snapshot generated from Victorian Government data. This material may be of assistance to you but the State of Victoria does not guarantee that the publication is without flaw of any kind or is wholly appropriate for your particular purposes and therefore disclaims all liability for error, loss or damage which may arise from reliance upon it. All persons accessing this information should make appropriate enquiries to assess the currency of data.

Scale 1:31,090
Printed: December 21, 2009



Planning Map

Department of
Planning and
Community Development



Copyright © State Government of Victoria. Service provided by www.land.vic.gov.au

Legend

<p>WARRNAMBOOL Major Town</p> <p>BRIMBANK Local Government Area</p> <p>Casey Local Government Name</p> <p>Cardinia Local Government Name</p> <p>South Gippsland Highway Major Road, Road</p> <p>Casey Road Road name</p> <p>Tramway Railway, Tramway</p> <p>Property/Parcel, Selected Address, Lot, Crown allotment</p> <p>25 2 10 River, Stream, Coastline</p> <p>Waterbody Waterbody</p> <p>Locality Locality name</p> <p>Local Government Area Local Government Name</p> <p>Urban Growth Bdy (UGB) Area outside the UGB</p> <p>Investigation Area Investigation Area</p> <p>Land added to UGB since 2005 Land added to UGB since 2005</p>	<p>Public Acquisition</p> <p>ZONES</p> <p>B1Z - Business 1</p> <p>B2Z - Business 2</p> <p>B3Z - Business 3</p> <p>B4Z - Business 4</p> <p>B5Z - Business 5</p> <p>CA - Commonwealth Land (not in scheme)</p> <p>CCZ - Capital City</p> <p>CDZ - Comprehensive Development</p> <p>DZ - Dockland</p> <p>ERZ - Environmental Rural</p> <p>FZ - Farming</p> <p>GWAZ - Green Wedge A</p> <p>GWZ - Green Wedge</p> <p>IN1Z - Industrial 1 (cont)</p>	<p>IN2Z - Industrial 2</p> <p>IN3Z - Industrial 3</p> <p>LDRZ - Low Density Residential</p> <p>MUZ - Mixed Use</p> <p>PCRZ - Public Conservation & Resource</p> <p>PDZ - Priority Development</p> <p>PPRZ - Public Park & Recreation</p> <p>PUZ1 - Public Use - Service & Utility</p> <p>PUZ2 - Public Use - Education</p> <p>PUZ3 - Public Use - Health Community</p> <p>PUZ4 - Public Use - Transport</p> <p>PUZ5 - Public Use - Cemetery / Crematorium</p> <p>PUZ6 - Public Use - Local Government</p> <p>PUZ7 - Public Use - Other Public Use</p> <p>R1Z - Residential 1</p> <p>R2Z - Residential 2 (cont)</p>	<p>R3Z - Residential 3</p> <p>RAZ - Rural Activity</p> <p>RCZ - Rural Conservation</p> <p>RDZ1 - Road - Category 1</p> <p>RDZ2 - Road - Category 2</p> <p>RLZ - Rural Living</p> <p>RUZ - Rural</p> <p>SUZ - Special Use</p> <p>TZ - Township</p> <p>UFZ - Urban Floodway</p> <p>UGZ - Urban Growth</p>
---	--	--	---

Disclaimer: This map is a snapshot generated from Victorian Government data. This material may be of assistance to you but the State of Victoria does not guarantee that the publication is without flaw of any kind or is wholly appropriate for your particular purposes and therefore disclaims all liability for error, loss or damage which may arise from reliance upon it. All persons accessing this information should make appropriate enquiries to assess the currency of data.

ATTACHMENT H
INFORMATION BULLETINS

Healesville – Koo Wee Rup Road

Pakenham Bypass to South Gippsland Highway

Information Bulletin 1
March 2007



With the completion of the Pakenham Bypass expected by the end of 2007, Healesville – Koo Wee Rup Road, between the Pakenham Bypass and the South Gippsland Highway, is anticipated to become a more important route.

Planning Study

VicRoads is undertaking a planning study to explore options for the future development of this key route.

The planning study is being undertaken on the basis that the route will be developed in the long term to a high standard, limited access road. The study includes an investigation of a bypass of the Koo Wee Rup township.

The study has three phases

Currently the study is in **Phase One**. This involves identifying relevant issues and constraints along the corridor.

Community feedback will be possible at **Phase Two** when concept options will be put on display. Comments on the options will be invited at this time.

In **Phase Three** of the study the exhibition of a preferred option will provide a further opportunity for public feedback.

What will be investigated?

VicRoads will be assessing the future traffic demand along the corridor, taking into consideration projected regional through traffic and traffic generation from growth in the Pakenham corridor.

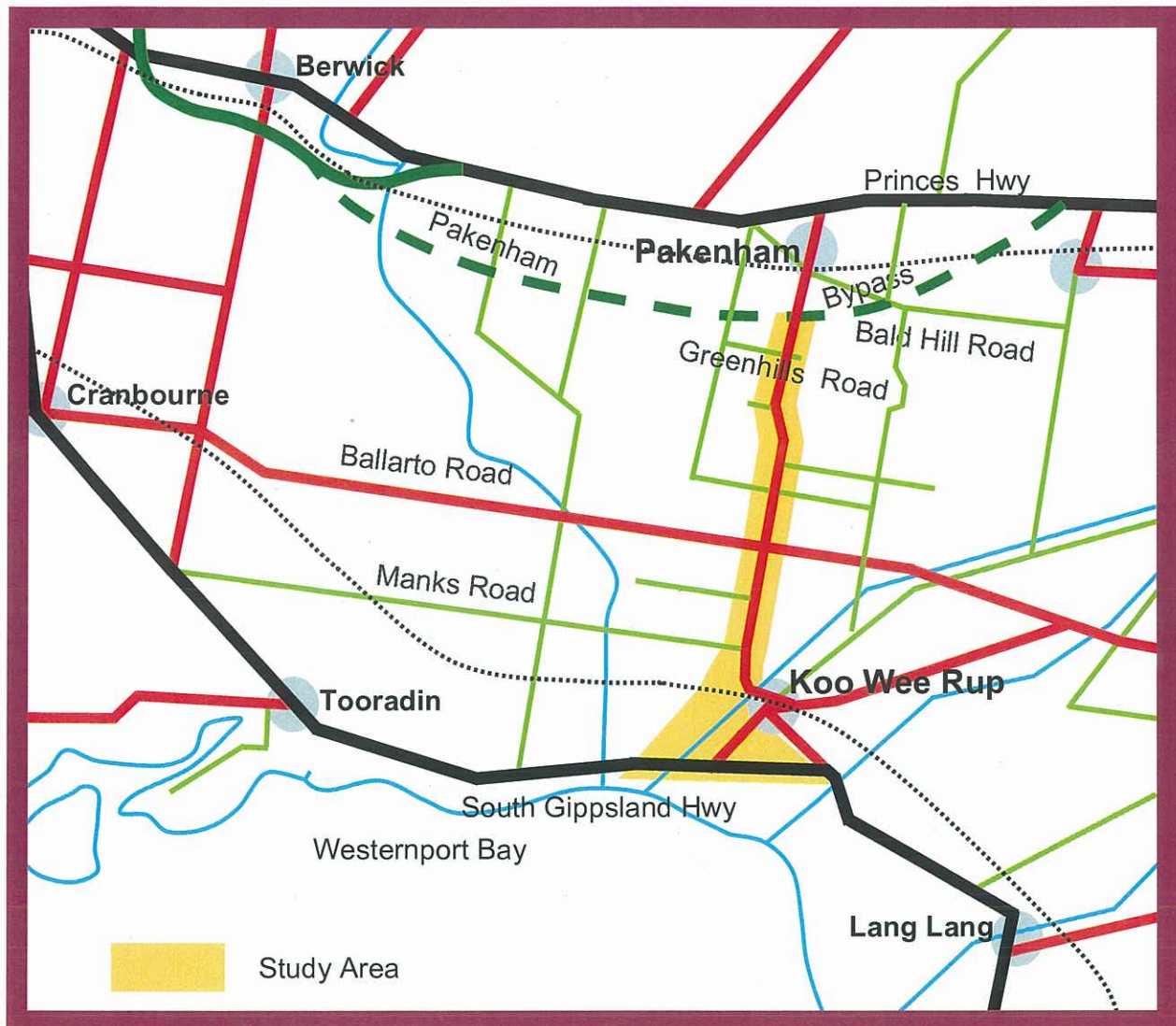
Each option will be assessed against the following criteria:

- Traffic performance
- Economic performance
- Property effects
- Social impacts
- Business impacts
- Environmental impacts

VicRoads will discuss impacts of any proposed options with affected landowners as they are developed during Phase Two of the study.



Healesville—Koo Wee Rup Rd Planning Study Area



For further information on the Healesville – Koo Wee Rup Road Planning Study please contact:

Roberta Styles-Wood
Community Engagement Coordinator
VicRoads Metro South East Region
Email: Roberta.styles-Wood@roads.vic.gov.au
Ph: 9881 8753

Healesville – Koo Wee Rup Road Pakenham Bypass to South Gippsland Highway

Information Bulletin 2
August 2007

Planning Study

VicRoads is undertaking a planning study to explore options for the future development of Healesville-Koo Wee Rup Road between the Pakenham Bypass and the South Gippsland Highway, including a bypass of the Koo Wee Rup township.

Options

It is proposed that Healesville-Koo Wee Rup Road will be upgraded and developed over time, as traffic volumes increase along the corridor.

This will involve staged improvement works to upgrade and duplicate Healesville-Koo Wee Rup Road between the Pakenham Bypass and the South Gippsland Highway, including a bypass of the Koo Wee Rup township.

The planning study is also considering options for the possible long term conversion of the route to freeway standard with the provision of interchanges and alternative access roads.



Above: Healesville-Koo Wee Rup Road/ Rossiter Road Intersection

Community Consultation

VicRoads has carried out specialist studies to identify issues and constraints along the corridor and has developed concept options for the future development of the route. These concept options will be put on public display to seek feedback from the community.

Display Of Options

Concept plans of options will be on display:

When: 3 - 14 September 2007 (Mon-Fri)
Time: 9 am—5 pm
Location: Shire of Cardinia office, Henty Way, Pakenham

Information Sessions

VicRoads appreciates the feedback it receives from local residents, businesses, schools and community groups and encourages this feedback. Members of the community are invited to provide comment on the displayed options.

Information sessions will be held at the following times:

Shire of Cardinia Office, Henty Way, Pakenham

Tuesday, 4 September 2007 – 10 am to 2 pm

Tuesday, 11 September 2007 – 3 pm to 9 pm

Koo Wee Rup Community Centre, Rossiter Road, Koo Wee Rup

Thursday 6 September 2007 – 3 pm to 9 pm

Thursday 13 September 2007 – 10 am to 2 pm

Next Step

Community feedback on the concept options will assist VicRoads in assessing and refining the options. More detailed specialist studies will be undertaken to further develop the options and evaluate impacts and benefits. A preferred option will be developed and exhibited for further public comment next year.

More Information

For further information on the planning study:
Write: Healesville-Koo Wee Rup Road
Planning Study, Private Bag 4 Mount
Waverley, 3149
Fax: 9887 7590
Email: mseprojects@roads.vic.gov.au
Phone: 9881 8753



Above: Looking north along Healesville-Koo Wee Rup Road from Bunyip River

INFORMATION BULLETIN 3

Planning study

Healesville-Koo Wee Rup Road - Pakenham Bypass and the South Gippsland Highway

Planning study

VicRoads has completed a planning study to identify a preferred option for the future development of Healesville-Koo Wee Rup Road between the Pakenham Bypass and the South Gippsland Highway, including a bypass of Koo Wee Rup.

The planning process will now move into the statutory planning phase. Funding for the staged development of the route will be considered once this phase is completed.

Community consultation

After completing studies to identify issues and constraints along the corridor, concept options for the route were developed and put on public display in September 2007 to seek community feedback.

The feedback generally indicated community support for a bypass of Koo Wee Rup and the duplication of the existing road.

The main concerns related to potential property impacts and possible changes in access to properties.

Assessment of options

The feedback received from the community has assisted VicRoads to further develop the options. Detailed investigations have been undertaken to assess the potential impacts and benefits. This has included more detailed road design, flora and fauna surveys, cultural heritage surveys, hydraulic modelling and economic evaluation. Based on the outcomes of this work, VicRoads has selected a preferred option for the future development of the route.

VicRoads preferred option

Initial development

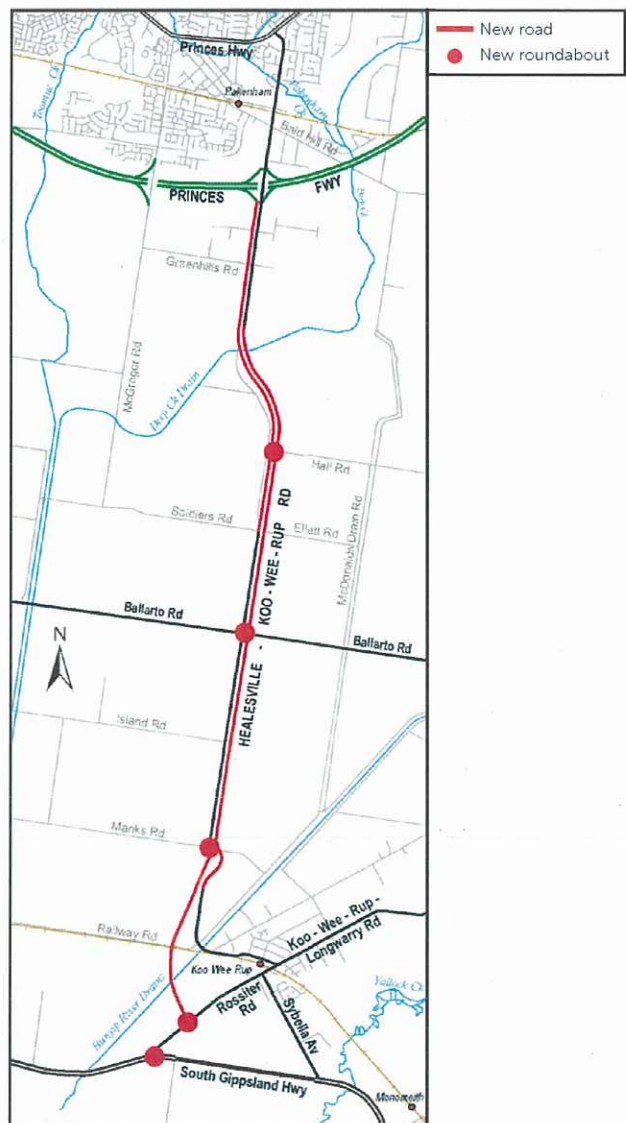
The preferred option for the initial development of the route involves a bypass of Koo Wee Rup and the duplication of the road between the Pakenham Bypass and Manks Road.

The bypass of Koo Wee Rup would include bridges over Railway Road and the Bunyip River drains and a roundabout at Rossiter Road. A new roundabout would also be constructed on the South Gippsland Highway at Rossiter Road.

The duplication works would include some realignment of the road between Deep Creek and Ellett Road and the construction of roundabouts at Hall Road, Ballarto Road and Manks Road.

It is expected that construction would be staged over time, with a bypass of Koo Wee Rup included as an early stage of works.

The land required for this initial development of the route will be included in a planning scheme amendment.



Longer-term development

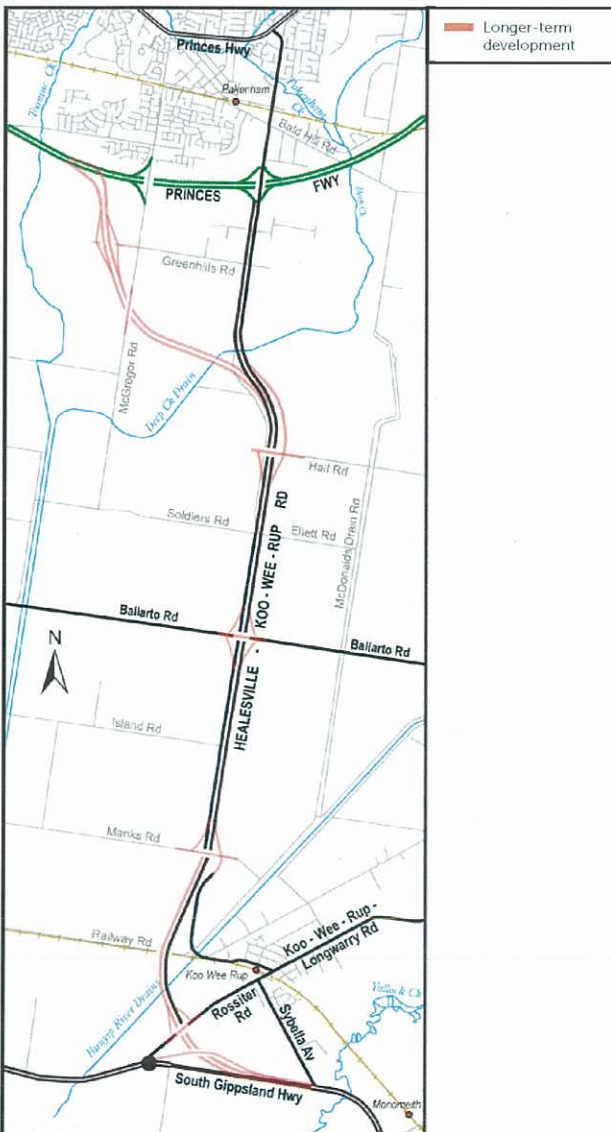
The planning study has also investigated options for the longer-term development of the route to cater for ongoing traffic growth in the corridor. The preferred option allows for the ultimate conversion of the route to freeway standard.

This proposal includes a new link to the Pakenham Bypass, the conversion of roundabouts to interchanges and the construction of an interchange with the South Gippsland Highway.

The link at the northern end of the route would involve a new interchange on the Pakenham Bypass west of McGregor Road and an interchange at the future western extension of Greenhills Road.

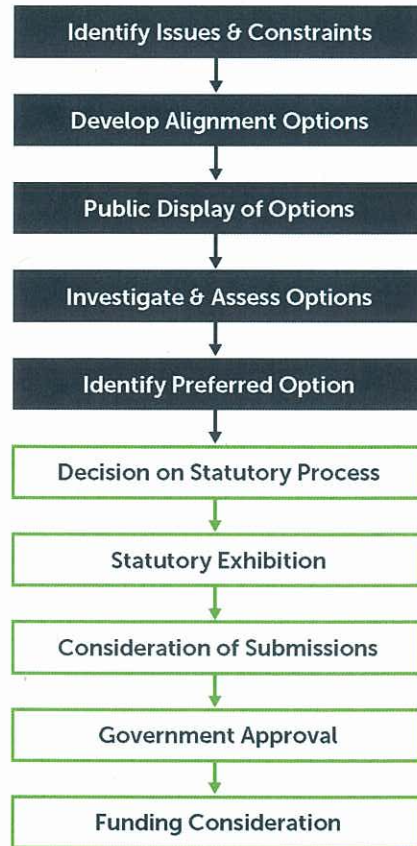
New access roads would be required at some locations to provide alternative access to properties that currently have direct access to Healesville-Koo Wee Rup Road.

The land requirements for this longer-term development of the route will also be included in a planning scheme amendment.



Planning process

The overall process required to complete the planning for the route is shown in the following flow chart. The shaded boxes indicate the steps that have been completed to date.



Next steps

The preferred option will be referred to the Minister for Planning, who will provide direction on the statutory planning process required to consider the proposal.

As part of this statutory planning process, VicRoads' proposal will be exhibited for public comment. This will provide an opportunity for the community to make any submissions on the proposal. The timing of the exhibition will be confirmed.

More information

For further information on the planning study:

Write Healesville-Koo Wee Rup Road
Planning Study, Private Bag 4
Mount Waverley VIC 3149

Web vicroads.vic.gov.au/kooweerup

Email mseprojects@roads.vic.gov.au

Fax (03) 9887 7590

Phone (03) 9881 8753

