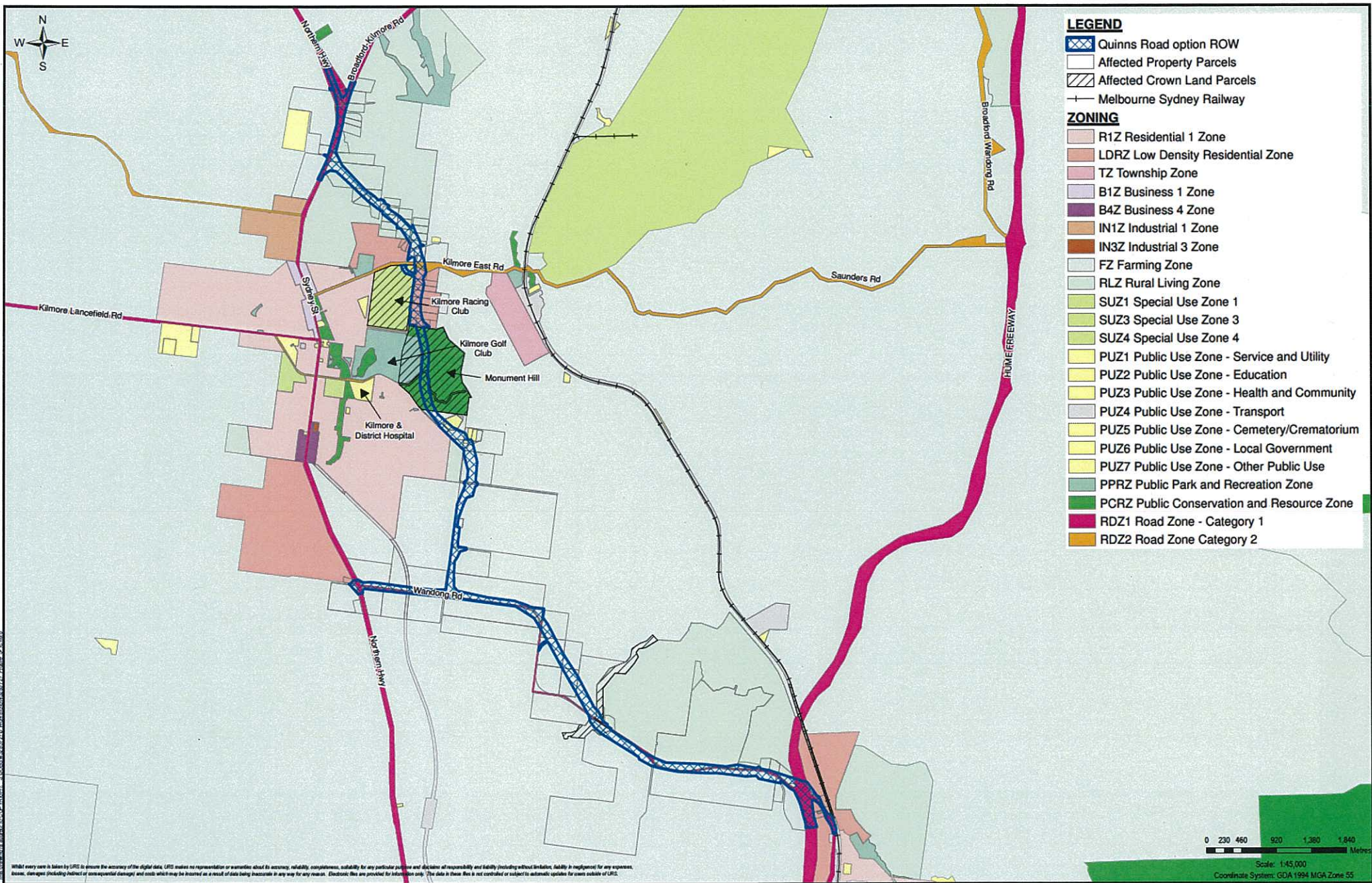


VICROADS

**KILMORE - WALLAN
BYPASS LAND USE AND
REGIONAL ECONOMY STUDY**

**PLANNING ZONES
DRY CREEK OPTION**





VICROADS

**KILMORE - WALLAN
BYPASS LAND USE AND
REGIONAL ECONOMY STUDY**

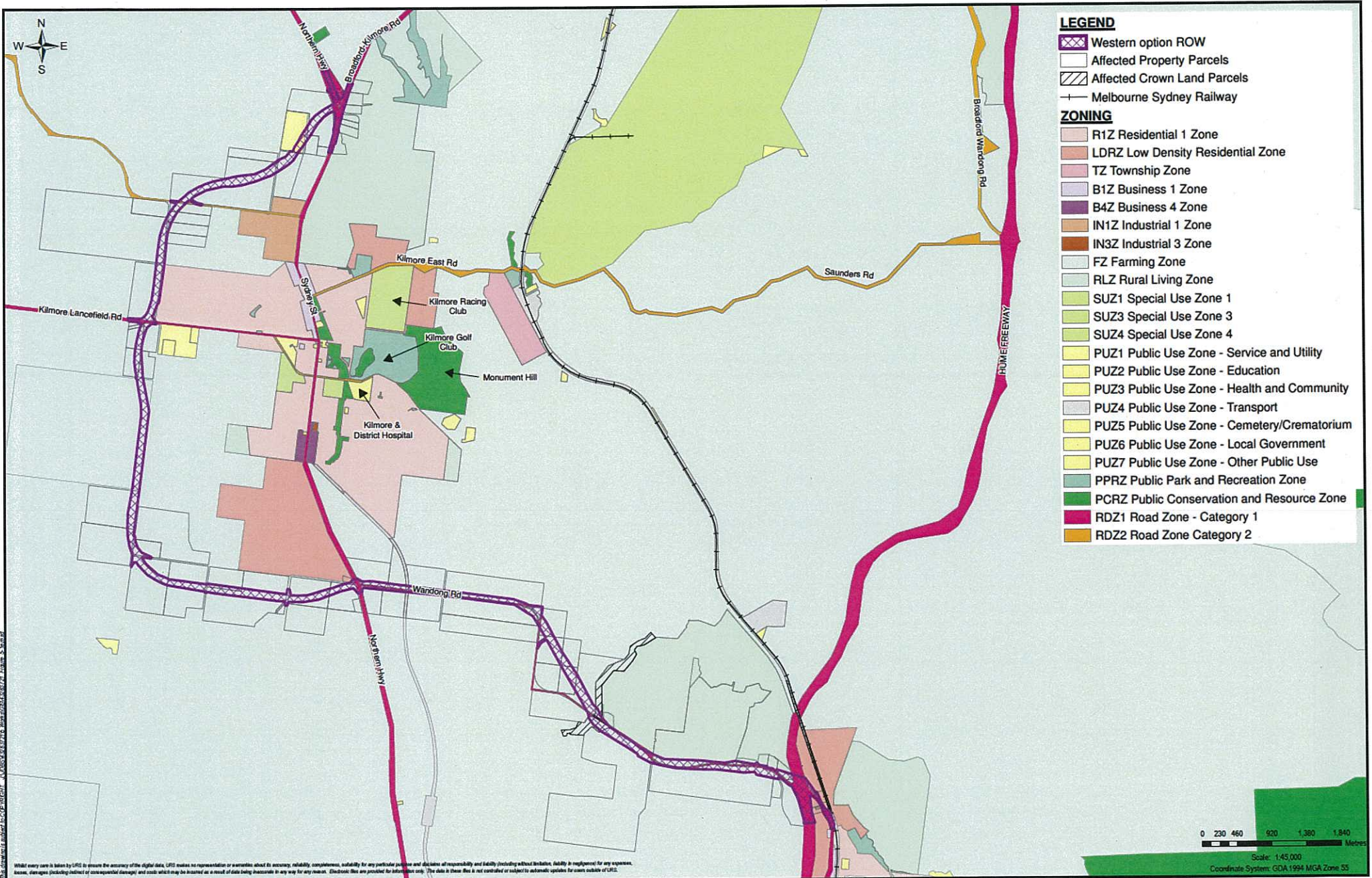
**PLANNING ZONES
QUINNS ROAD OPTION**

URS

File No: 43283721_Figure_5-1c.mxd Drawn: NT Approved: KS Date: 14/11/2012

Figure: 5-1c

Rev. A A3



VICROADS

**KILMORE - WALLAN
BYPASS LAND USE AND
REGIONAL ECONOMY STUDY**

**PLANNING ZONES
WESTERN OPTION**

