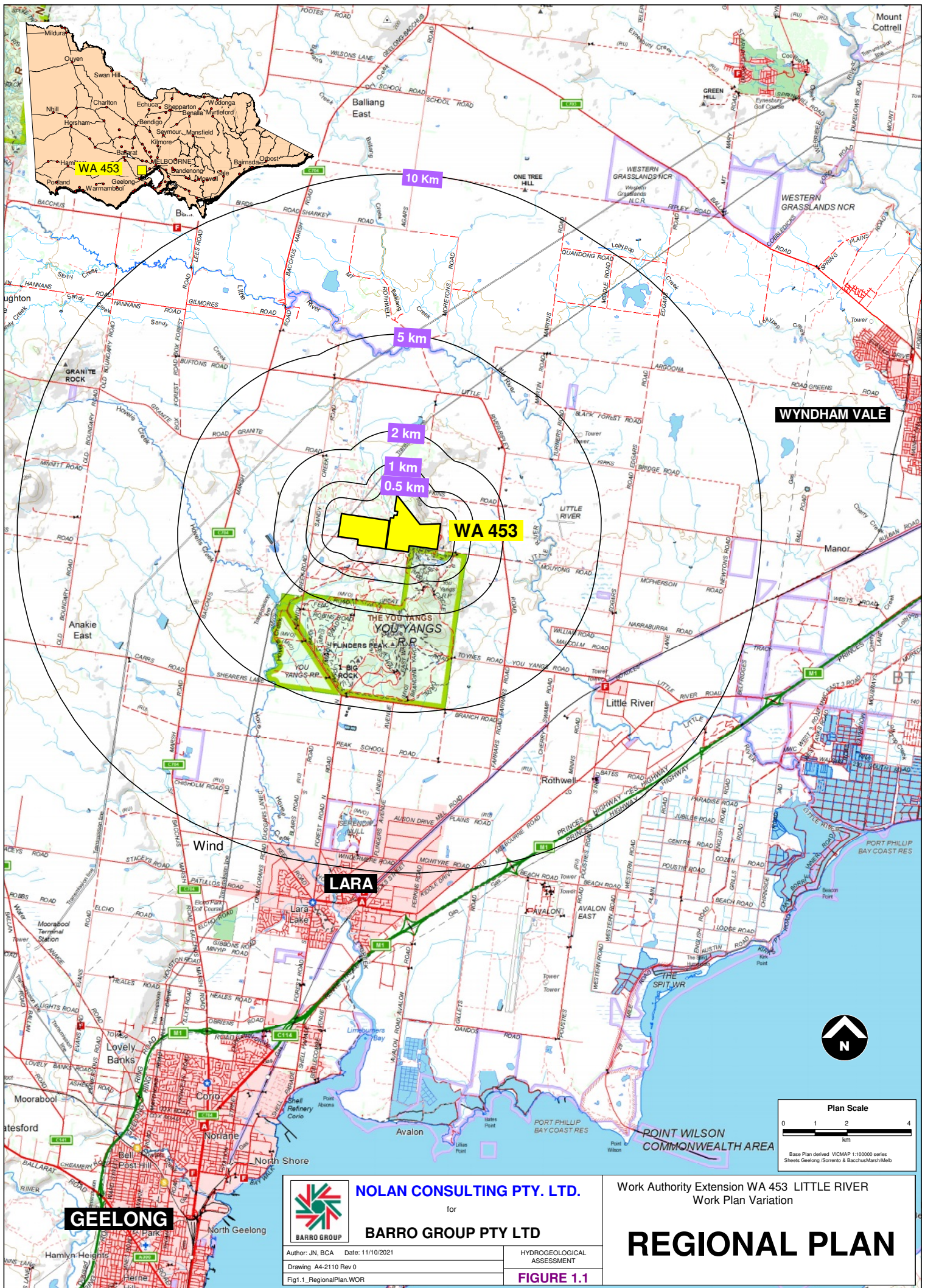


Appendix A

Figures



NOLAN CONSULTING PTY. LTD.
for
BARRO GROUP PTY LTD

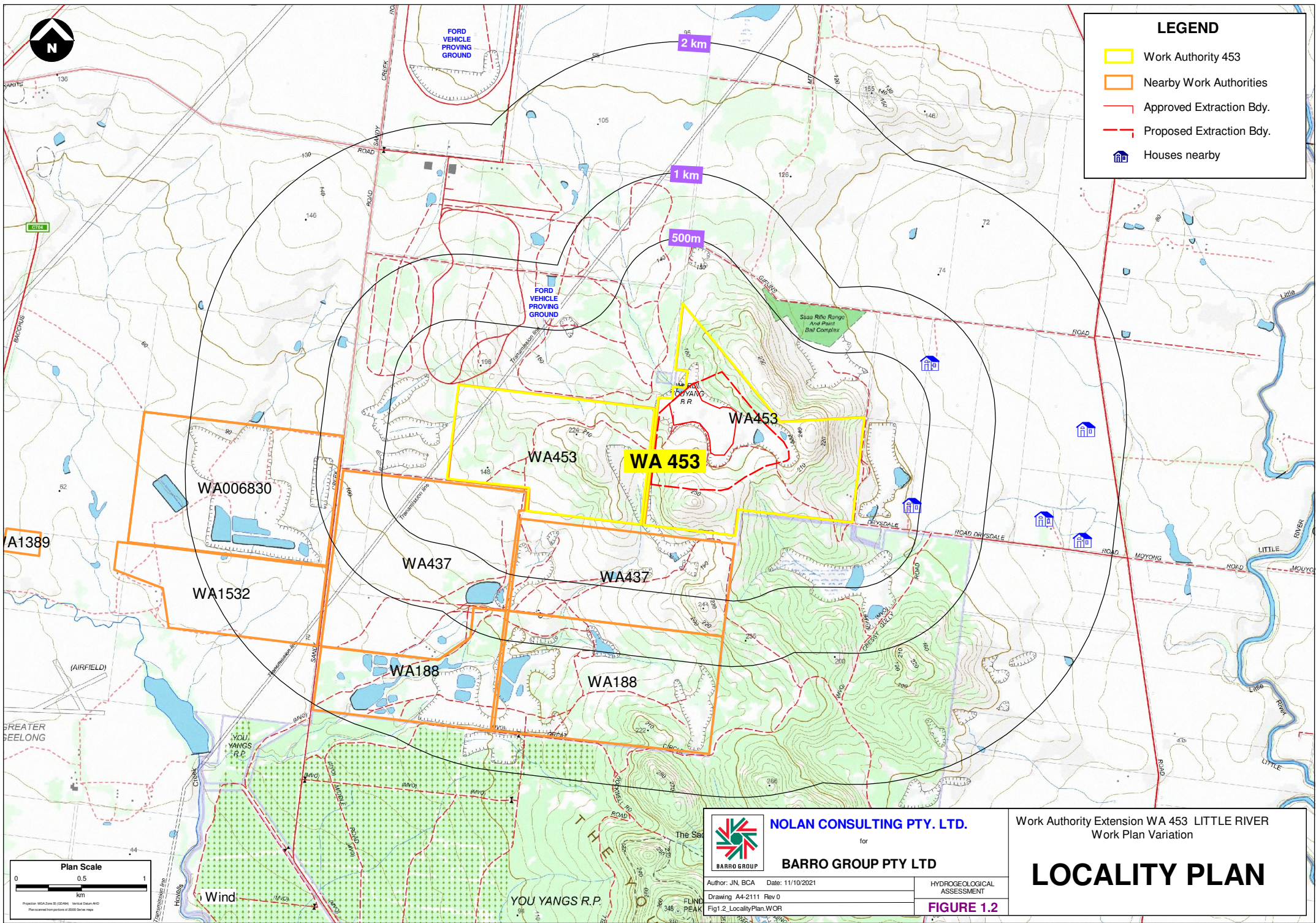
Work Authority Extension WA 453 LITTLE RIVER
Work Plan Variation

REGIONAL PLAN

Author: JN, BCA Date: 11/10/2021
Drawing: A4-2110 Rev 0
Fig.1.1_RegionalPlan.WOR

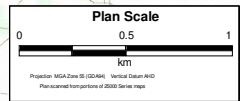
HYDROGEOLOGICAL
ASSESSMENT
FIGURE 1.1

Plan Scale
0 1 2 4
km
Base Plan derived VICMAP 1:100000 series
Sheets Geelong (Somers & Bacchus Marsh/Mab)



LEGEND

- Work Authority 453
- Nearby Work Authorities
- Approved Extraction Bdy.
- Proposed Extraction Bdy.
- 🏠 Houses nearby



NOLAN CONSULTING PTY. LTD.
for
BARRO GROUP PTY LTD

Author: JN, BCA Date: 11/10/2021
Drawing: A4-2111 Rev 0
Fig1.2_LocalityPlan.WOR

HYDROGEOLOGICAL ASSESSMENT
FIGURE 1.2

Work Authority Extension WA 453 LITTLE RIVER
Work Plan Variation

LOCALITY PLAN



NOLAN CONSULTING PTY. LTD.

for

BARRO GROUP PTY LTD

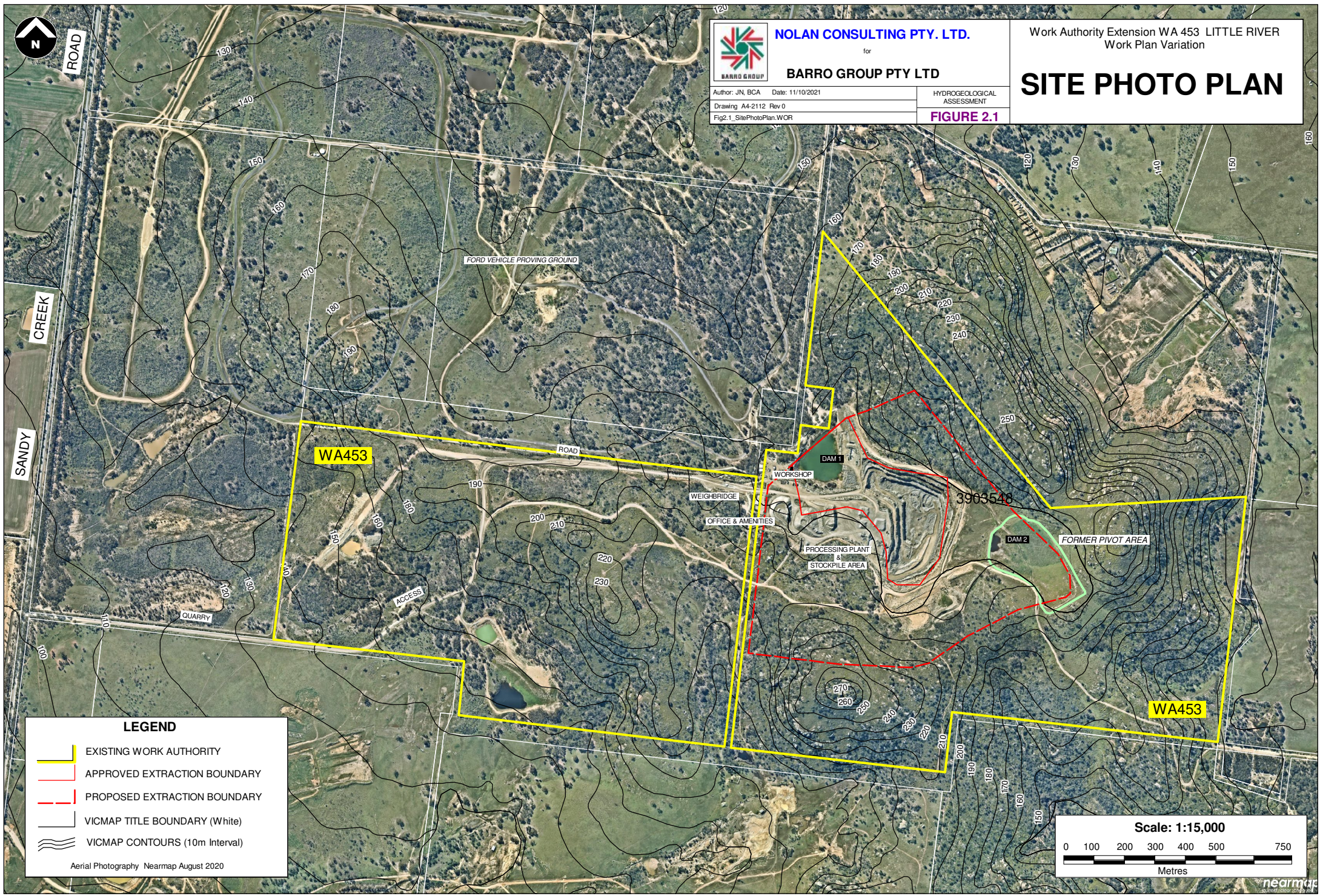
Work Authority Extension WA 453 LITTLE RIVER
Work Plan Variation

Author: JN, BCA Date: 11/10/2021
Drawing: A4-2112 Rev 0
Fig2.1_SitePhotoPlan.WOR






HYDROGEOLOGICAL
ASSESSMENT

FIGURE 2.1

SITE PHOTO PLAN

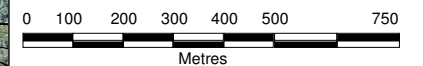


LEGEND

-  EXISTING WORK AUTHORITY
-  APPROVED EXTRACTION BOUNDARY
-  PROPOSED EXTRACTION BOUNDARY
-  VICMAP TITLE BOUNDARY (White)
-  VICMAP CONTOURS (10m Interval)

Aerial Photography Nearmap August 2020

Scale: 1:15,000





NOLAN CONSULTING PTY. LTD.

for

BARRO GROUP PTY LTD

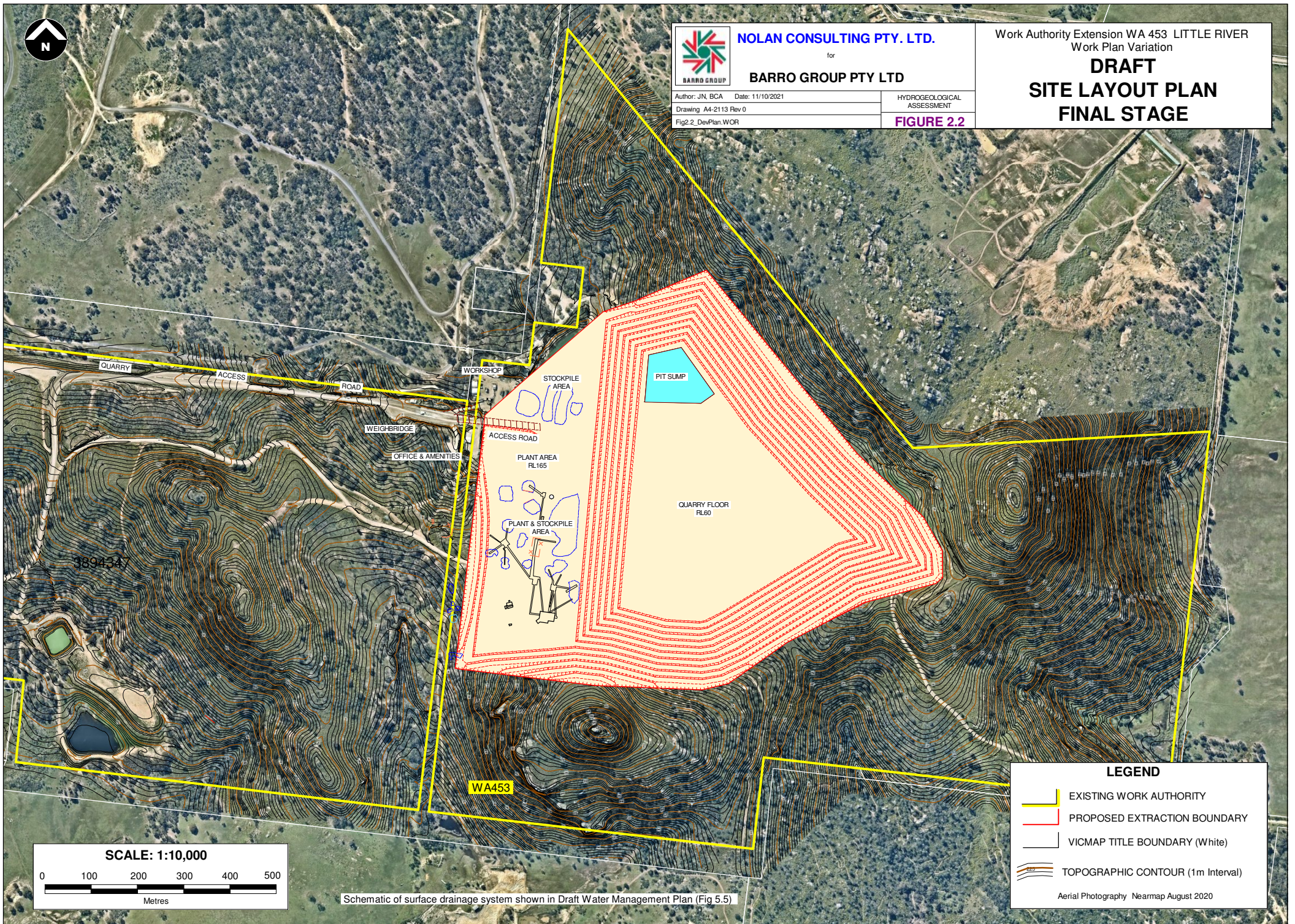
Author: JN, BCA Date: 11/10/2021
Drawing: A4-2113 Rev 0
Fig2.2_DevPlan.WOR

HYDROGEOLOGICAL
ASSESSMENT





FIGURE 2.2

Work Authority Extension WA 453 LITTLE RIVER
Work Plan Variation

**DRAFT
SITE LAYOUT PLAN
FINAL STAGE**

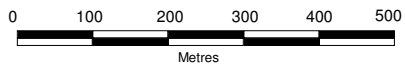


LEGEND

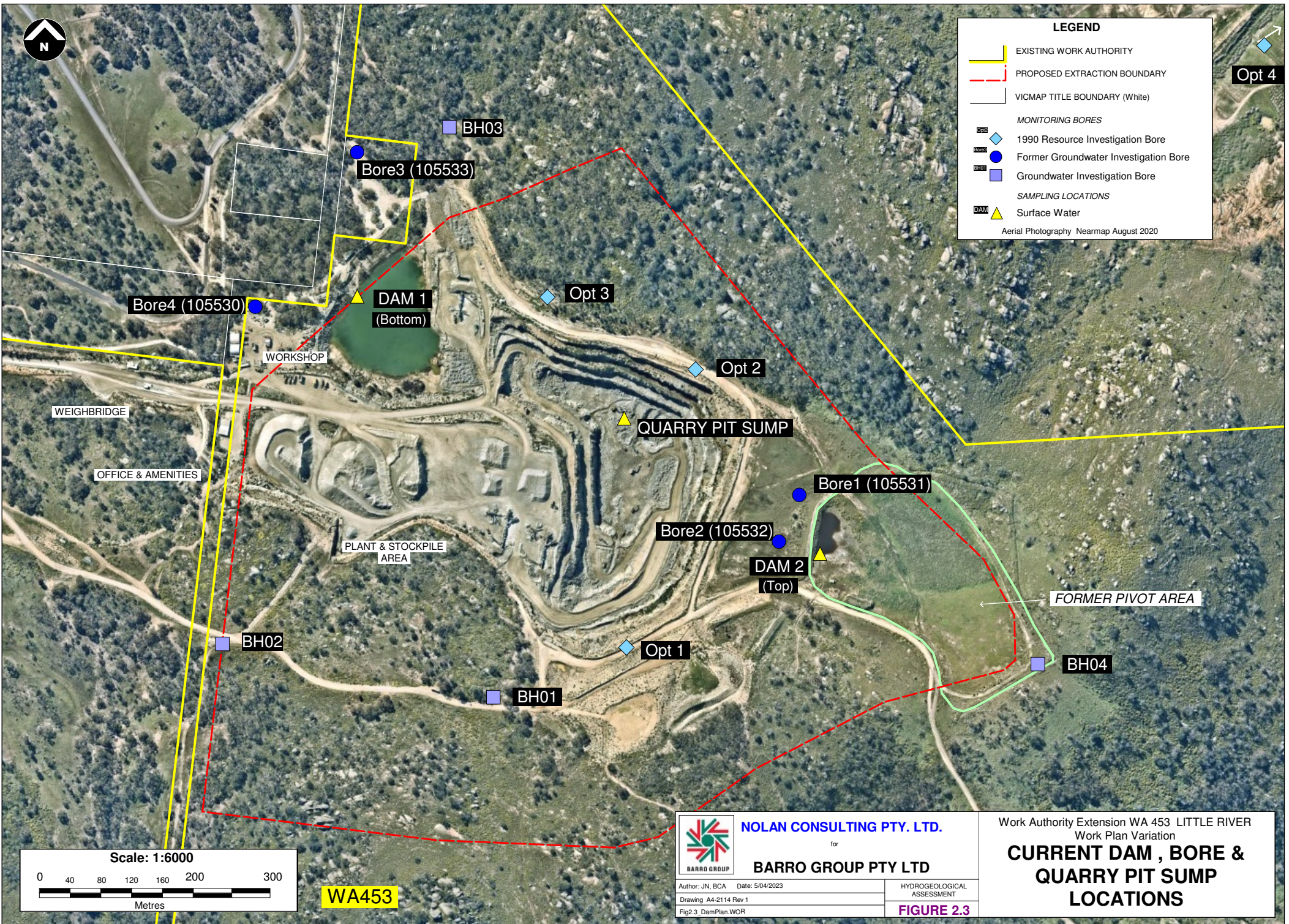
-  EXISTING WORK AUTHORITY
-  PROPOSED EXTRACTION BOUNDARY
-  VICMAP TITLE BOUNDARY (White)
-  TOPOGRAPHIC CONTOUR (1m Interval)

Aerial Photography Nearmap August 2020

SCALE: 1:10,000



Schematic of surface drainage system shown in Draft Water Management Plan (Fig 5.5)



LEGEND

- EXISTING WORK AUTHORITY
- - - PROPOSED EXTRACTION BOUNDARY
- VICMAP TITLE BOUNDARY (White)

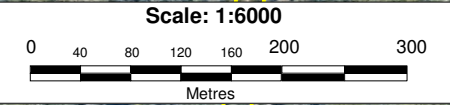
MONITORING BORES

- ◆ 1990 Resource Investigation Bore
- Former Groundwater Investigation Bore
- Groundwater Investigation Bore

SAMPLING LOCATIONS

- ▲ Surface Water

Aerial Photography Nearmap August 2020



WA453

NOLAN CONSULTING PTY. LTD.
for
BARRO GROUP PTY LTD







Author: JN, BCA Date: 5/04/2023
Drawing A4-2114 Rev 1
Fig2.3_DamPlan.WOR

HYDROGEOLOGICAL ASSESSMENT
FIGURE 2.3

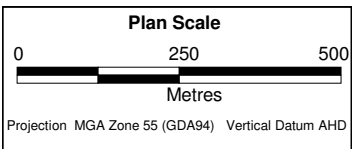
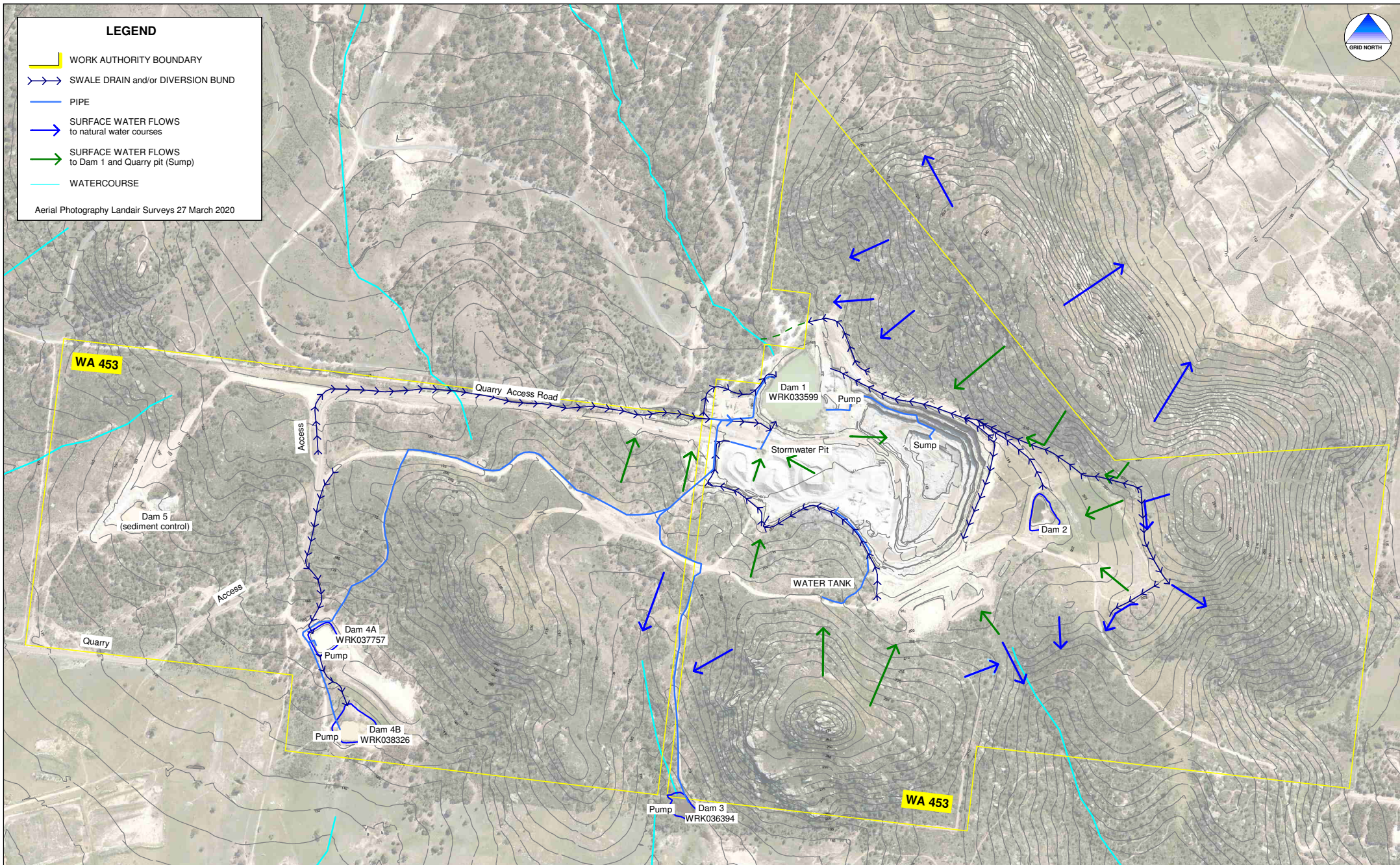
Work Authority Extension WA 453 LITTLE RIVER
Work Plan Variation
CURRENT DAM , BORE & QUARRY PIT SUMP LOCATIONS



LEGEND

-  WORK AUTHORITY BOUNDARY
-  SWALE DRAIN and/or DIVERSION BUND
-  PIPE
-  SURFACE WATER FLOWS to natural water courses
-  SURFACE WATER FLOWS to Dam 1 and Quarry pit (Sump)
-  WATERCOURSE

Aerial Photography Landair Surveys 27 March 2020



NOLAN CONSULTING PTY. LTD.

for

BARRO GROUP PTY LTD

Author: JN, BCA Date: 15/05/2023
Drawing: A4-2254 Rev 0
Fig3.1_WaterManPlan_v2.WOR









HYDROGEOLOGICAL ASSESSMENT
FIGURE 3.1

Work Authority Extension WA453 LITTLE RIVER
Work Plan Variation

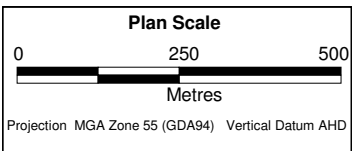
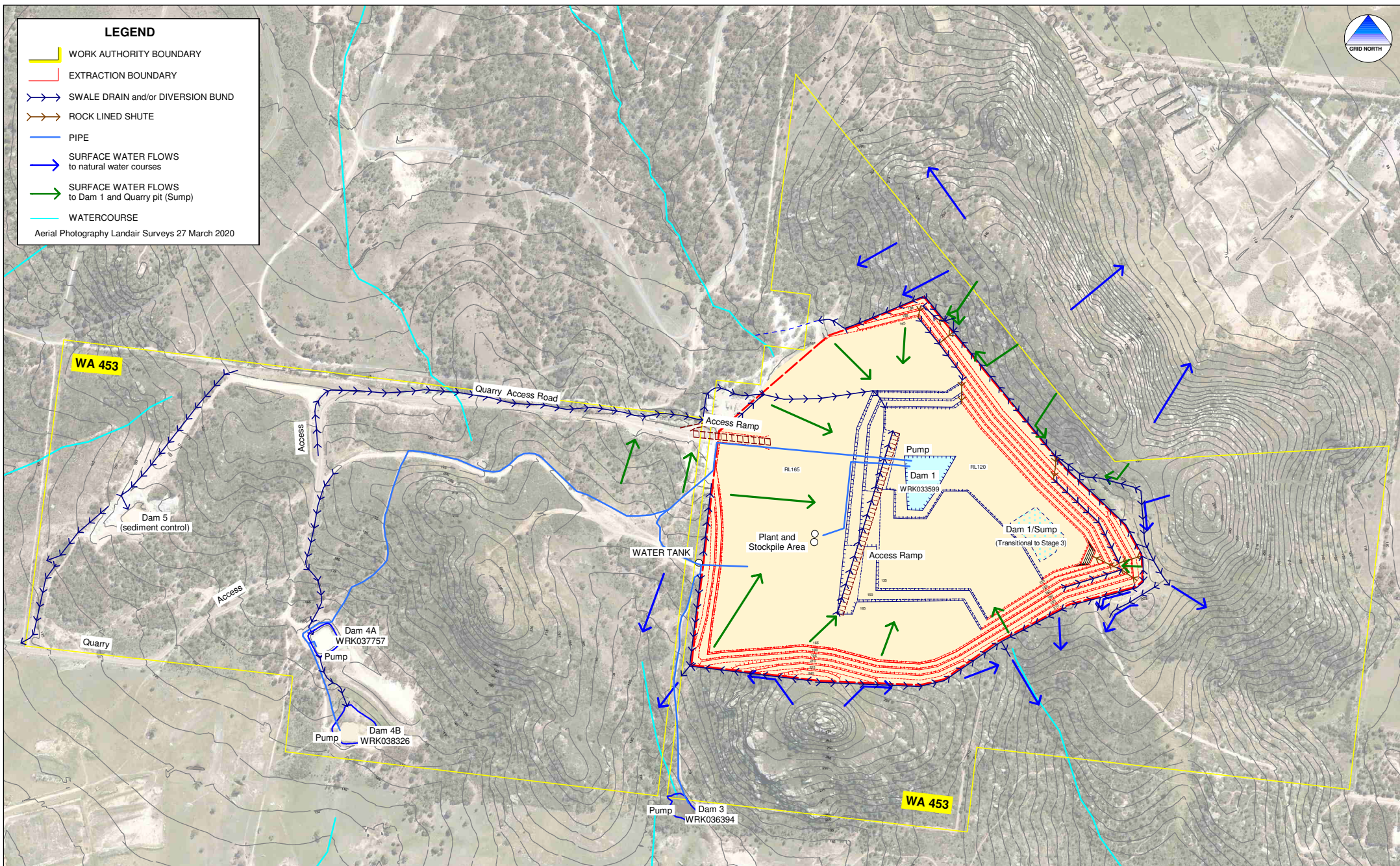
**EXISTING
WATER MANAGEMENT
MAP**



LEGEND

-  WORK AUTHORITY BOUNDARY
-  EXTRACTION BOUNDARY
-  SWALE DRAIN and/or DIVERSION BUND
-  ROCK LINED SHUTE
-  PIPE
-  SURFACE WATER FLOWS to natural water courses
-  SURFACE WATER FLOWS to Dam 1 and Quarry pit (Sump)
-  WATERCOURSE

Aerial Photography Landair Surveys 27 March 2020



NOLAN CONSULTING PTY. LTD.

for

BARRO GROUP PTY LTD




Author: JN, BCA Date: 15/05/2023
 Drawing: A4-2255 Rev 0
 Fig4.1_Stage2WaterManPlan.WOR

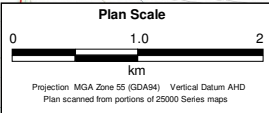
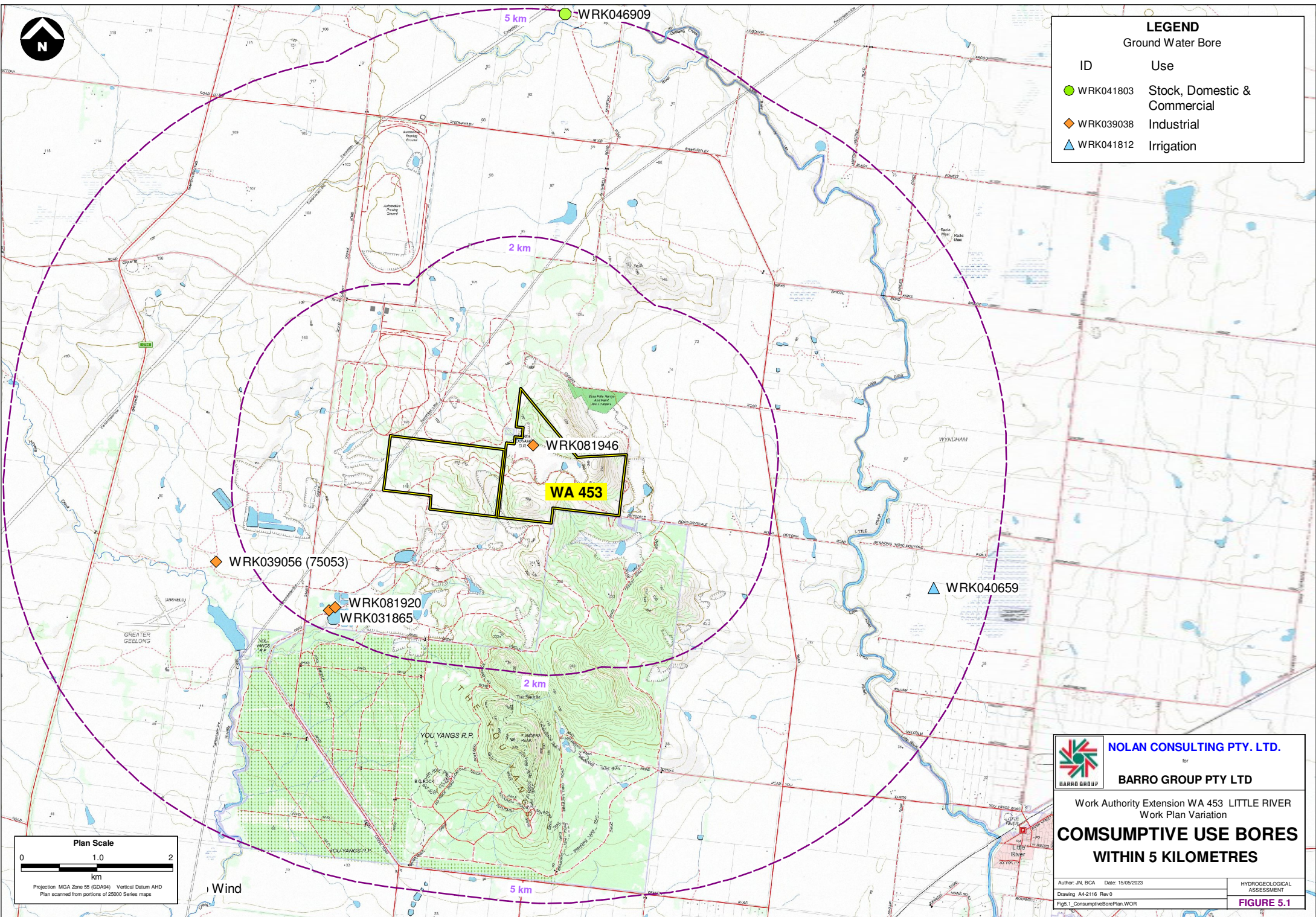
HYDROGEOLOGICAL
 ASSESSMENT
FIGURE 4.1


Work Authority Extension WA453 LITTLE RIVER
 Work Plan Variation

**STAGE2
 WATER MANAGEMENT
 MAP**



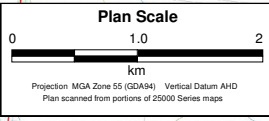
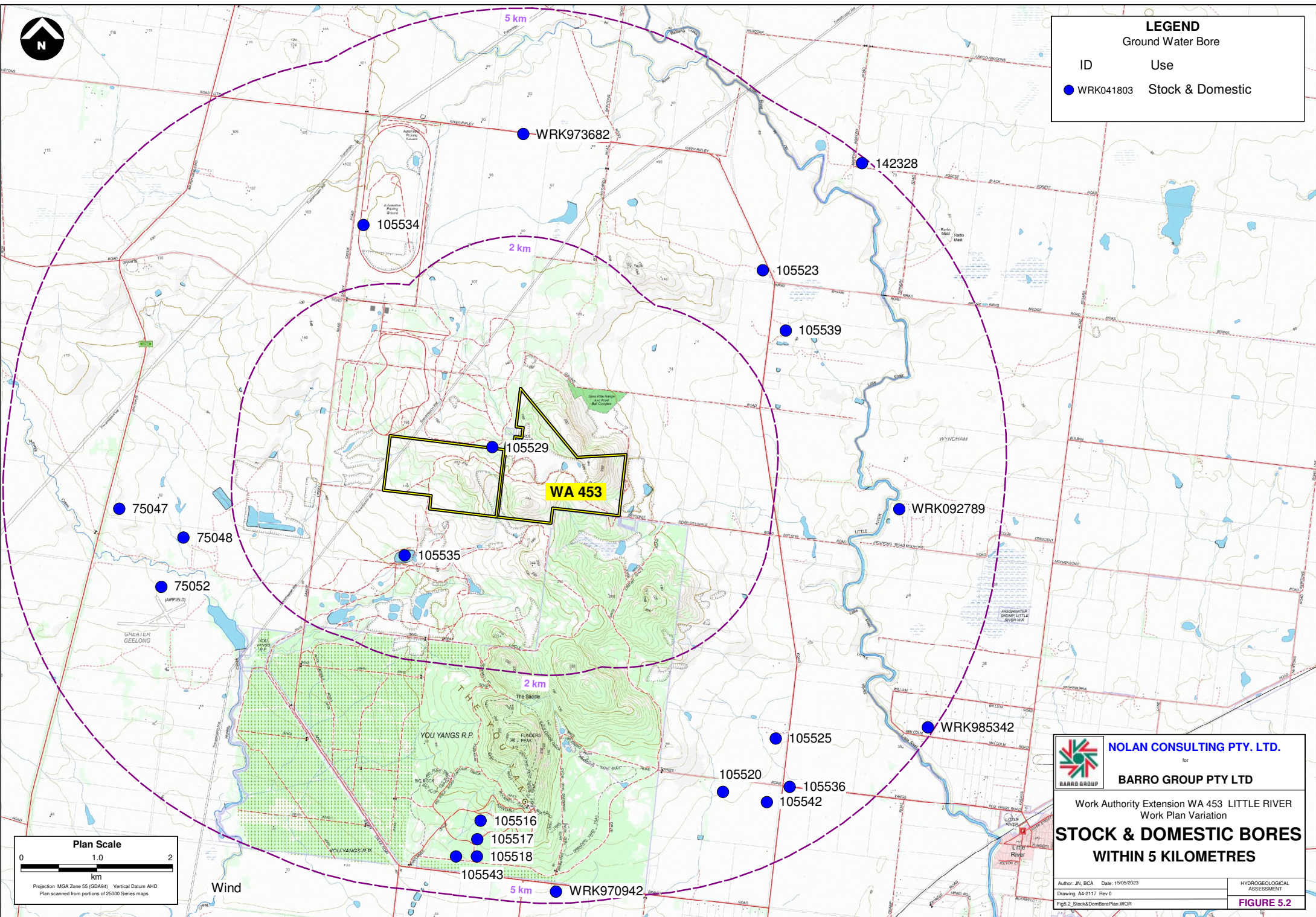
LEGEND	
Ground Water Bore	
ID	Use
 WRK041803	Stock, Domestic & Commercial
 WRK039038	Industrial
 WRK041812	Irrigation



	NOLAN CONSULTING PTY. LTD.
	for BARRO GROUP PTY LTD
Work Authority Extension WA 453 LITTLE RIVER Work Plan Variation	
CONSUMPTIVE USE BORES WITHIN 5 KILOMETRES	
Author: JN, BCA Date: 15/05/2023	HYDROGEOLOGICAL ASSESSMENT
Drawing: A4-2116 Rev 0	FIGURE 5.1
Fig5.1_ConsumptiveBorePlan_WOR	



LEGEND	
ID	Use
● WRK041803	Stock & Domestic



NOLAN CONSULTING PTY. LTD.
for
BARRO GROUP PTY LTD

Work Authority Extension WA 453 LITTLE RIVER
Work Plan Variation

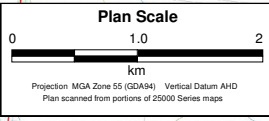
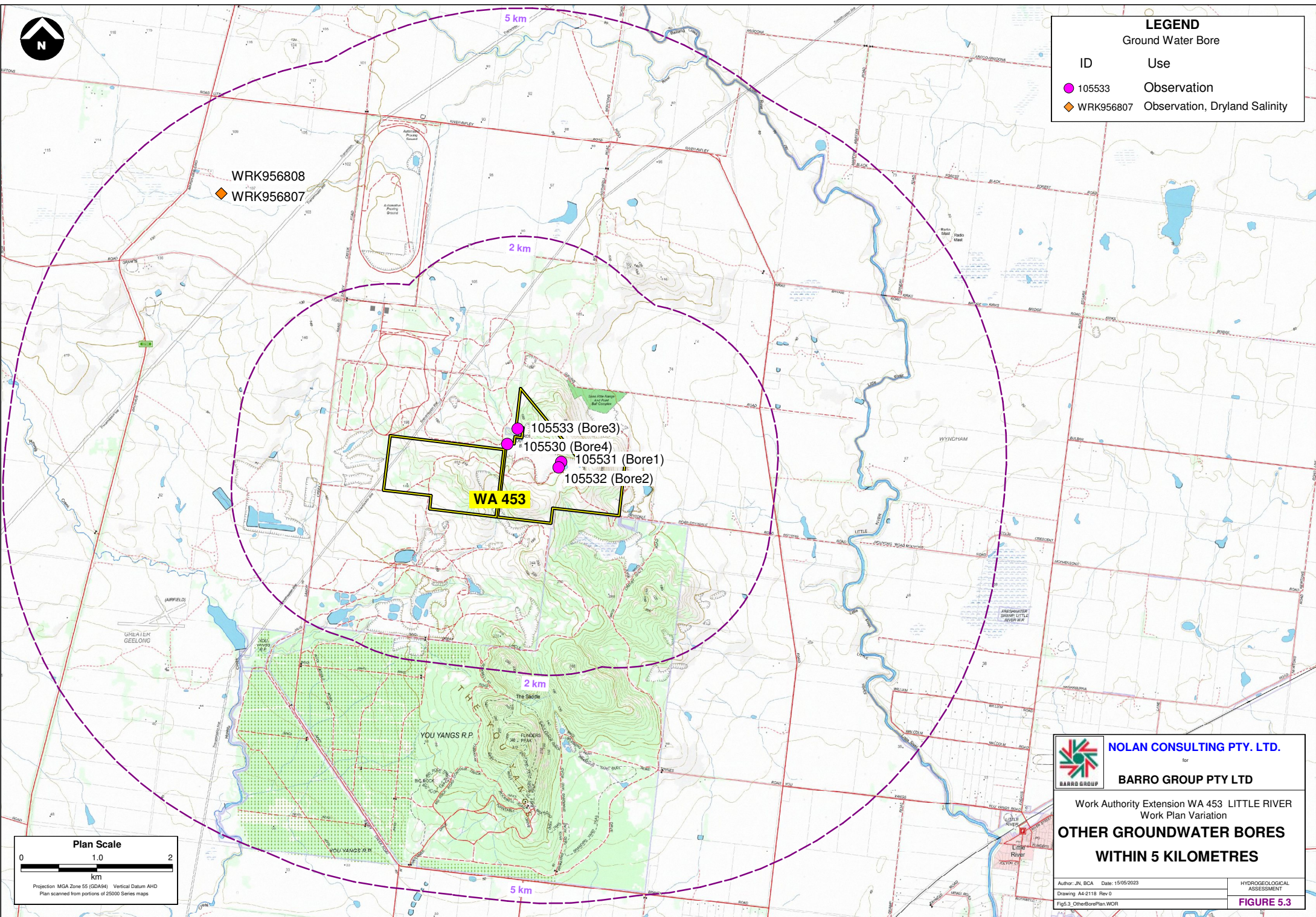
**STOCK & DOMESTIC BORES
WITHIN 5 KILOMETRES**


Author: JN, BCA Date: 15/05/2023
Drawing: A4-2117 Rev 0
Fig5.2 Stock&DomBorePlan.WOR

HYDROGEOLOGICAL
ASSESSMENT
FIGURE 5.2



LEGEND	
Ground Water Bore	
ID	Use
105533	Observation
WRK956807	Observation, Dryland Salinity



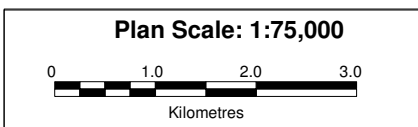
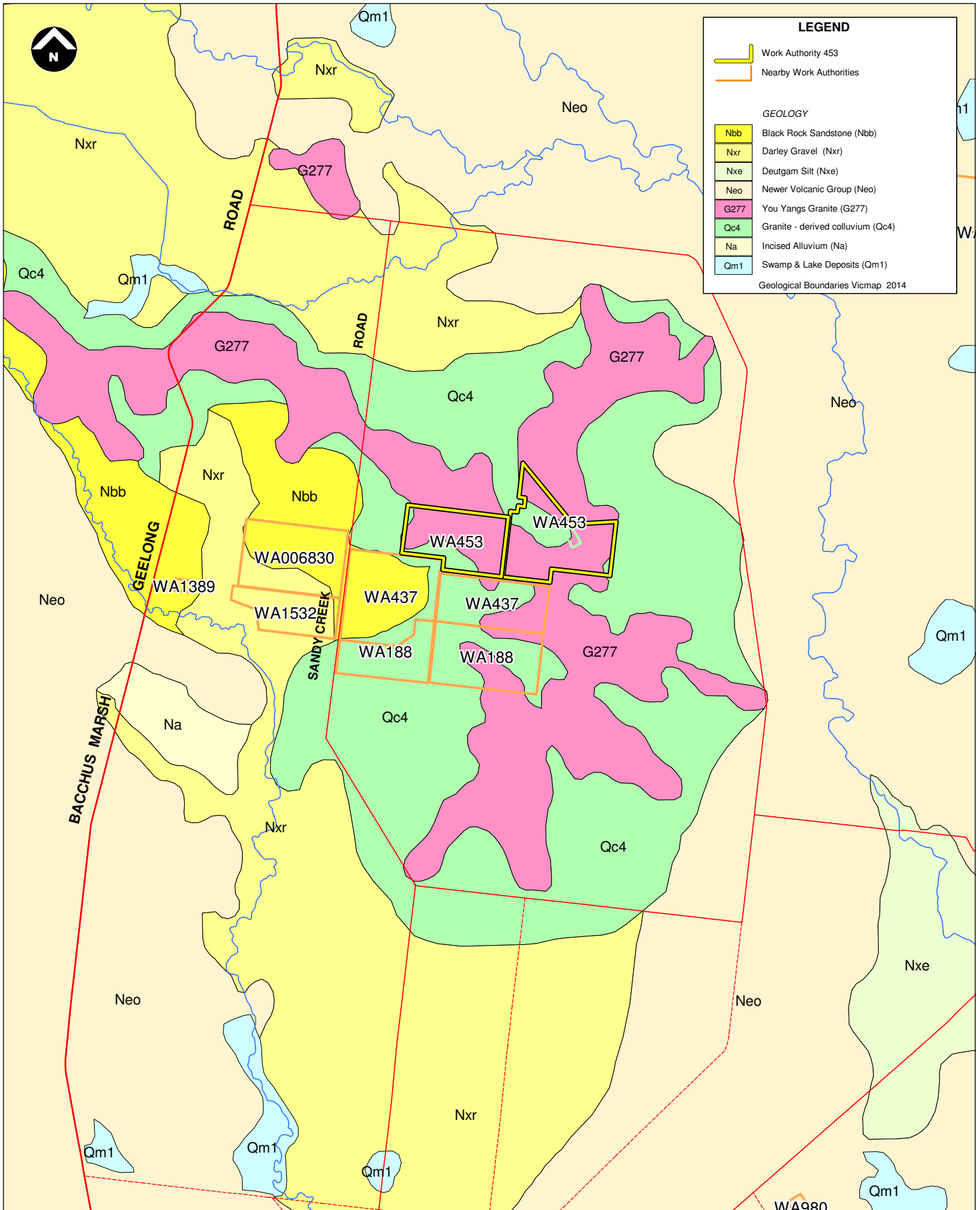
 **NOLAN CONSULTING PTY. LTD.**
for
BARRO GROUP PTY LTD


Work Authority Extension WA 453 LITTLE RIVER
Work Plan Variation

**OTHER GROUNDWATER BORES
WITHIN 5 KILOMETRES**

Author: JN, BCA	Date: 15/05/2023	HYDROGEOLOGICAL ASSESSMENT
Drawing: A4-2118	Rev: 0	
Fig5.3_OtherBorePlan_WOR		

FIGURE 5.3



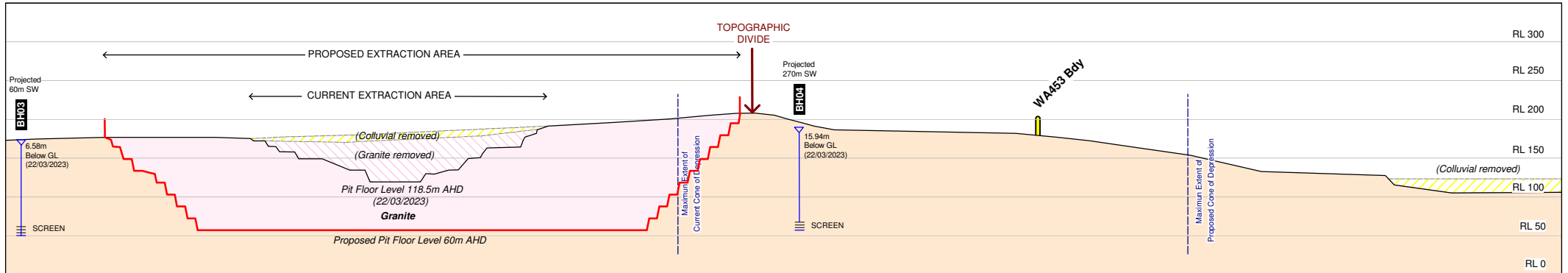
 **NOLAN CONSULTING PTY. LTD.**
for
BARRO GROUP PTY LTD

Author: JN, BCA Date: 15/05/2023
Drawing: A4-2115 Rev 0
Fig7.1_GeologyPlan.WOR

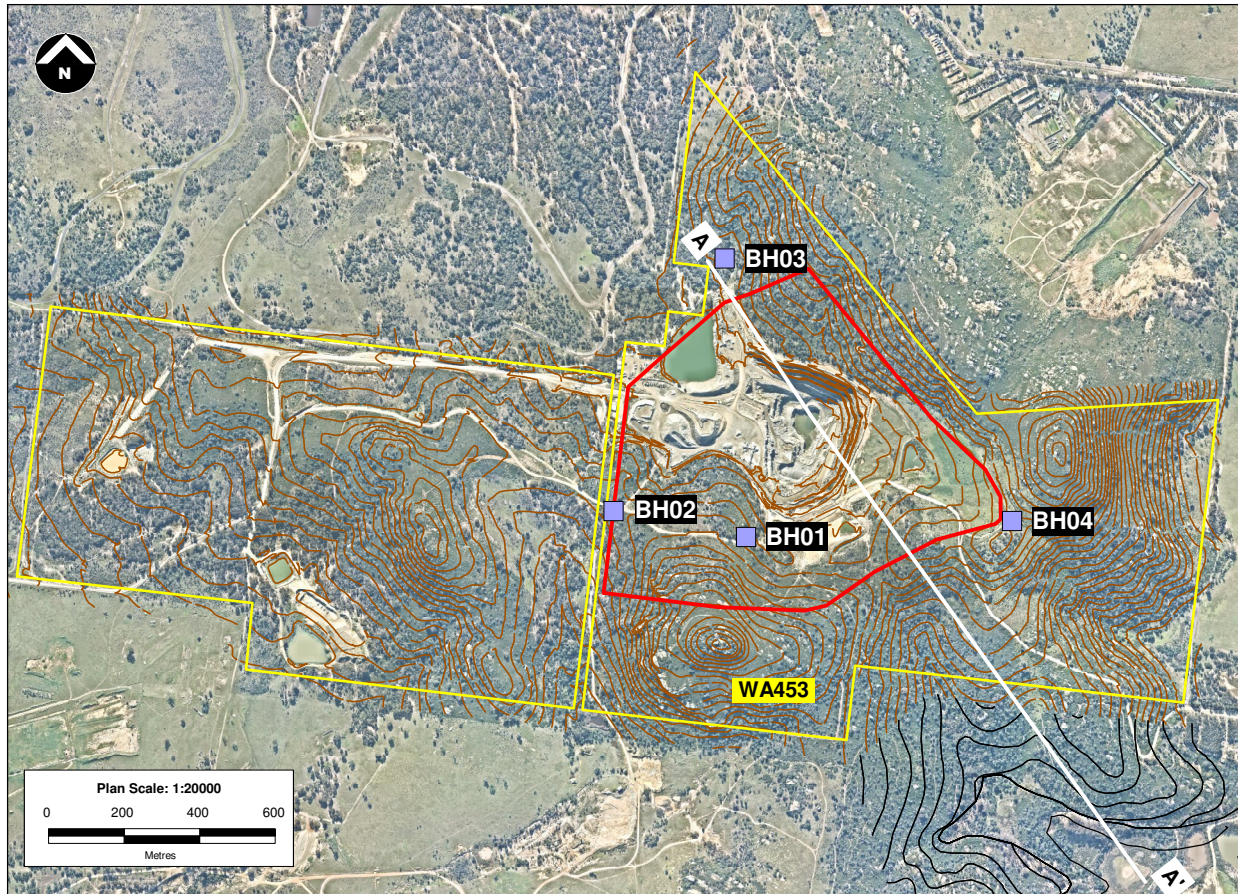
HYDROGEOLOGICAL ASSESSMENT
FIGURE 7.1

Work Authority Extension WA 453 LITTLE RIVER
Work Plan Variation

REGIONAL GEOLOGY

A**A'**

Section Profile May 2022
Scale 1H=1V

**LEGEND**

- EXISTING WORK AUTHORITY
 - PROPOSED EXTRACTION BOUNDARY
 - GROUNDWATER INVESTIGATION BORE
 - SECTION LINE LOCATION
- Aerial Photography Nearmap May 2022

	NOLAN CONSULTING PTY. LTD.
	for BARRO GROUP PTY LTD
Work Authority Extension WA453 LITTLE RIVER Work Plan Variation	
SECTION LINE AA'	
Author: JN, BCA Date: 15/05/2023	HYDROGEOLOGICAL ASSESSMENT
Drawing A4-Draft Rev 0	FIGURE 7.2
Fig7.2_SectionLine.WOR	