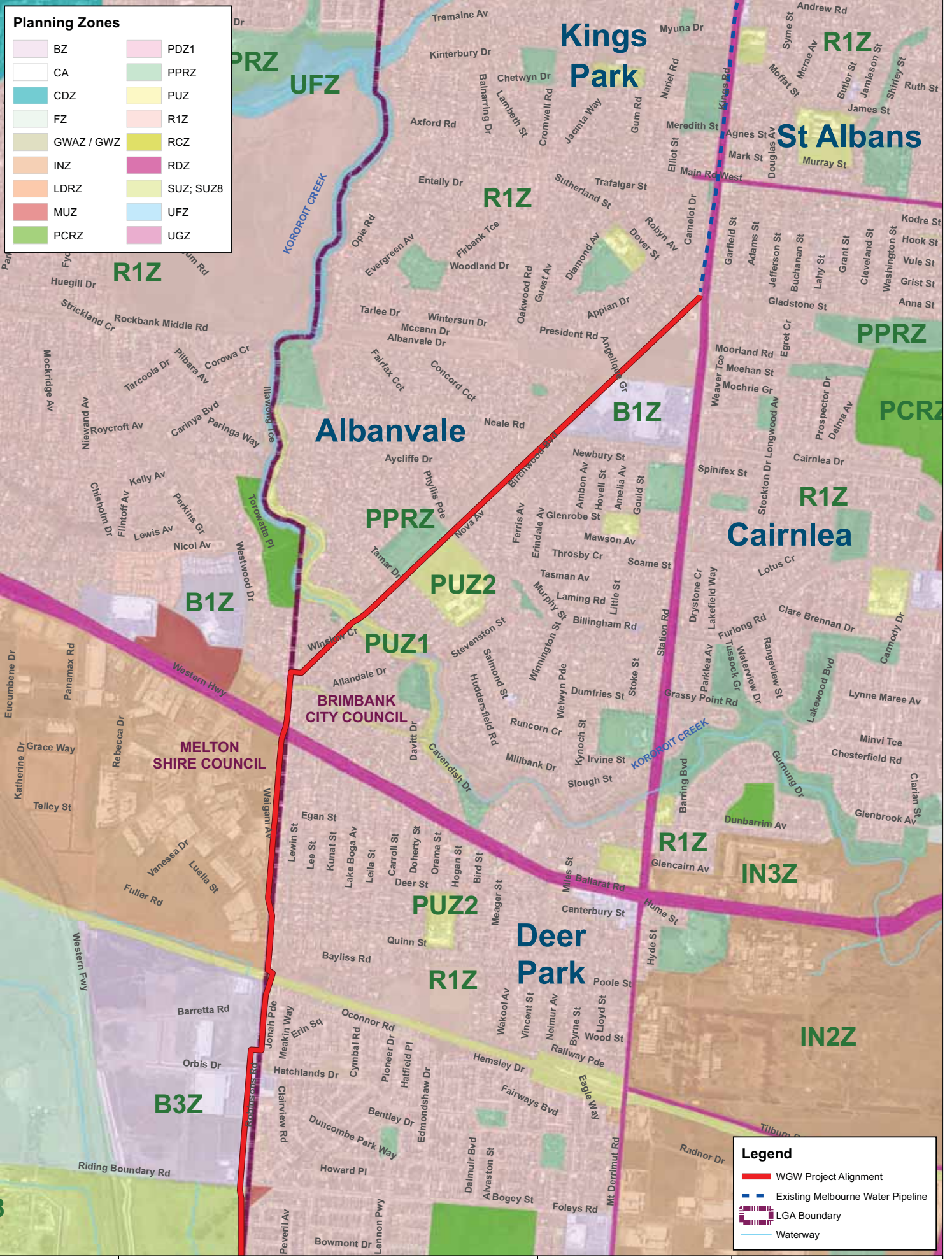


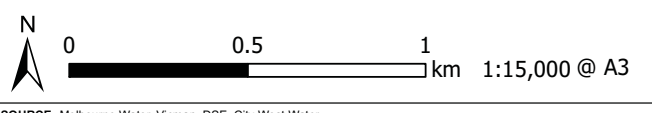
Planning Zones

| | |
|------------|-----------|
| BZ | PDZ1 |
| CA | PPRZ |
| CDZ | PUZ |
| FZ | R1Z |
| GWAZ / GWZ | RCZ |
| INZ | RDZ |
| LDRZ | SUZ; SUZ8 |
| MUZ | UFZ |
| PCRZ | UGZ |



Legend

- WGW Project Alignment
- Existing Melbourne Water Pipeline
- LGA Boundary
- Waterway



| | | |
|---|---|---------------------|
| SOURCE Melbourne Water, Vicmap, DSE, City West Water | | |
| GIS FILE O:\GIS\MEG302_StAlbans_Werribee_MWData_Control Wpaps\MXD\Issued\MEG302-G-MAP-080-B.mxd | COORDINATE SYSTEM GDA 1994 MGA Zone 55 | DATE 17 Dec 2013 |

Kellogg, Brown & Root Pty Ltd

Kellogg, Brown & Root Pty Ltd ABN 91 007 660 317
Level 3, 441 St Kilda Rd, Melbourne VIC 3004

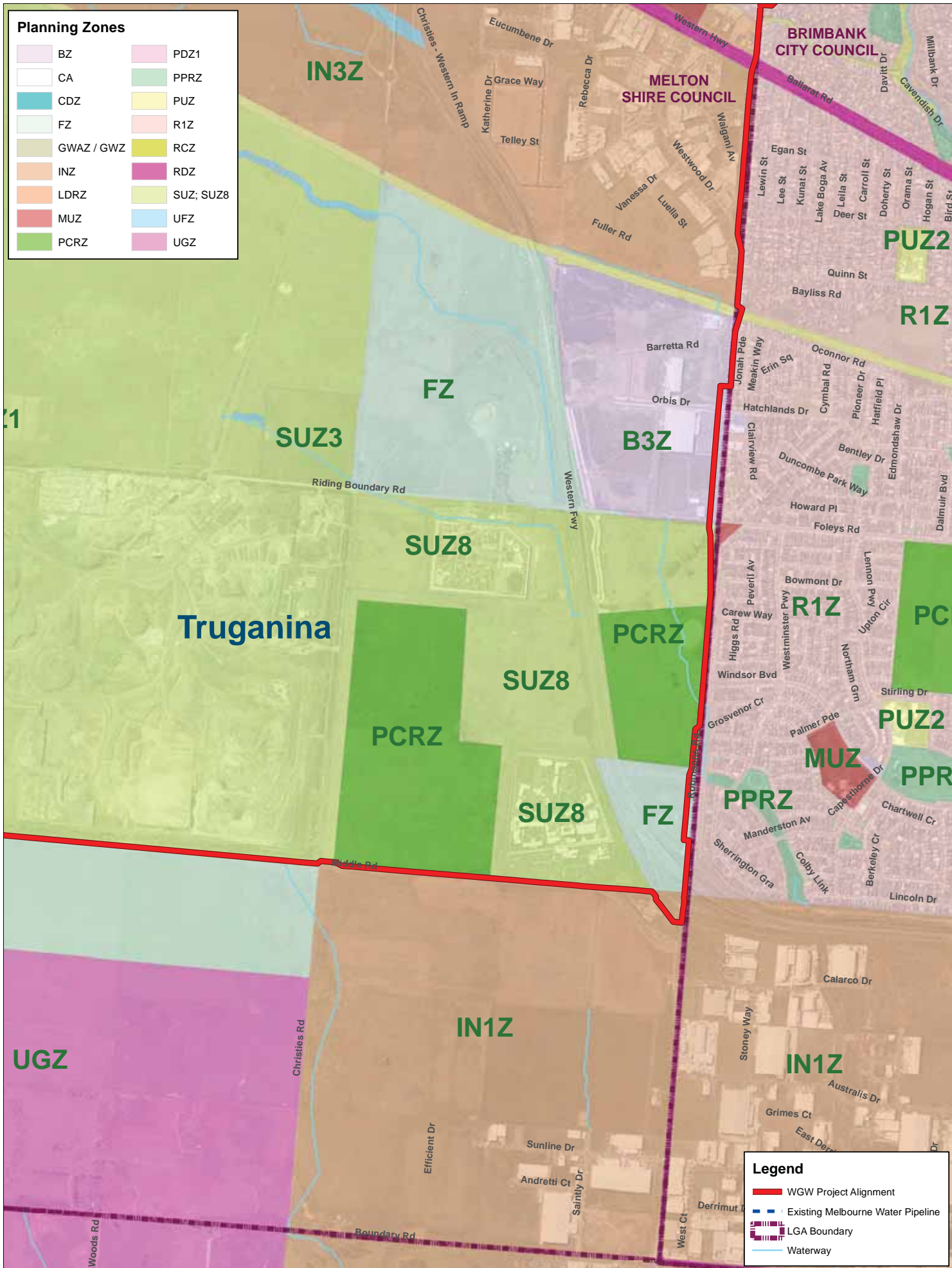
Prepared: JC, Checked: CV

| | |
|---|---------------|
| TITLE WATER FOR A GROWING WEST St Albans to Werribee Main Stage 2 | |
| Planning Zones Maps | |
| Map 1 of 5 | |
| PROJECT No. MEG302 | REVISION B |
| MAP No. MEG302-G-MAP-080-B | |

Disclaimer: While every care is taken to ensure the accuracy of this data, KBR makes no representations or warranties about its accuracy, reliability, completeness or suitability for any particular purpose and disclaims all responsibility and all liability (including and without limitation, liability in negligence) for all expenses, losses, damages (including indirect or consequential damage) and costs which you might incur as a result of the data being inaccurate or incomplete in anyway and for any reason.

Planning Zones

| | |
|------------|-----------|
| BZ | PDZ1 |
| CA | PPRZ |
| CDZ | PUZ |
| FZ | R1Z |
| GWAZ / GWZ | RCZ |
| INZ | RDZ |
| LDRZ | SUZ; SUZ8 |
| MUZ | UFZ |
| PCRZ | UGZ |



Legend

- WGW Project Alignment
- Existing Melbourne Water Pipeline
- LGA Boundary
- Waterway



N
0 0.5 1 km 1:15,000 @ A3

SOURCE Melbourne Water, Vicmap, DSE, City West Water

| | | |
|--|--|----------------------------|
| GIS FILE O:\G&I\GIS\MEG302_StAlbans_Werribee_MWData_Control\Waps\MXD\Issued\MEG302-G-MAP-080-B.mxd | COORDINATE SYSTEM GDA 1994 MGA Zone 55 | DATE 17 Dec 2013 |
|--|--|----------------------------|

Kellogg, Brown & Root Pty Ltd

KBR

Kellogg, Brown & Root Pty Ltd ABN 91 007 660 317
Level 3, 441 St Kilda Rd, Melbourne VIC 3004

Prepared: JC, Checked: CV

TITLE
WATER FOR A GROWING WEST
St Albans to Werribee Main Stage 2

Planning Zones Maps

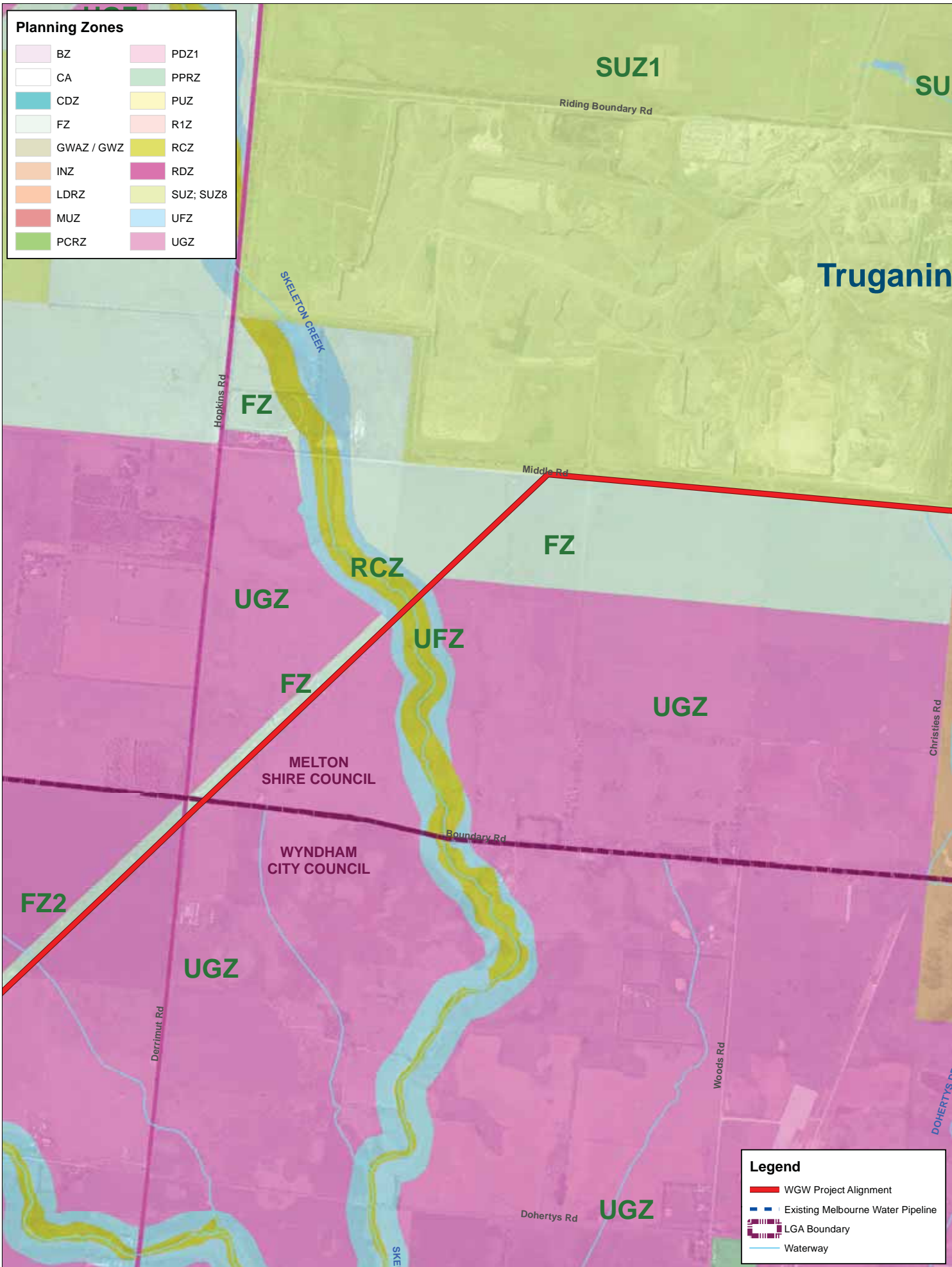
Map 2 of 5

| | |
|-----------------------------------|----------------------|
| PROJECT No. MEG302 | REVISION B |
| MAP No. MEG302-G-MAP-080-B | |

Disclaimer: While every care is taken to ensure the accuracy of this data, KBR makes no representations or warranties about its accuracy, reliability, completeness or suitability for any particular purpose and disclaims all responsibility and all liability (including and without limitation, liability in negligence) for all expenses, losses, damages (including indirect or consequential damage) and costs which you might incur as a result of the data being inaccurate or incomplete in anyway and for any reason.

Planning Zones

| | |
|------------|-----------|
| BZ | PDZ1 |
| CA | PPRZ |
| CDZ | PUZ |
| FZ | R1Z |
| GWAZ / GWZ | RCZ |
| INZ | RDZ |
| LDRZ | SUZ; SUZ8 |
| MUZ | UFZ |
| PCRZ | UGZ |



Legend

- WGW Project Alignment
- Existing Melbourne Water Pipeline
- LGA Boundary
- Waterway



N
0 0.5 1 km 1:15,000 @ A3

SOURCE Melbourne Water, Vicmap, DSE, City West Water

| | | |
|---|--|----------------------------|
| GIS FILE O:\GIS\MEG302_StAlbans_Werribee_MWData_Control Maps\MXD\Issued\MEG302-G-MAP-080-B.mxd | COORDINATE SYSTEM GDA 1994 MGA Zone 55 | DATE 17 Dec 2013 |
|---|--|----------------------------|

Kellogg, Brown & Root Pty Ltd

KBR

Kellogg, Brown & Root Pty Ltd ABN 91 007 660 317
Level 3, 441 St Kilda Rd, Melbourne VIC 3004

Prepared: JC, Checked: CV

TITLE
WATER FOR A GROWING WEST
St Albans to Werribee Main Stage 2

Planning Zones Maps

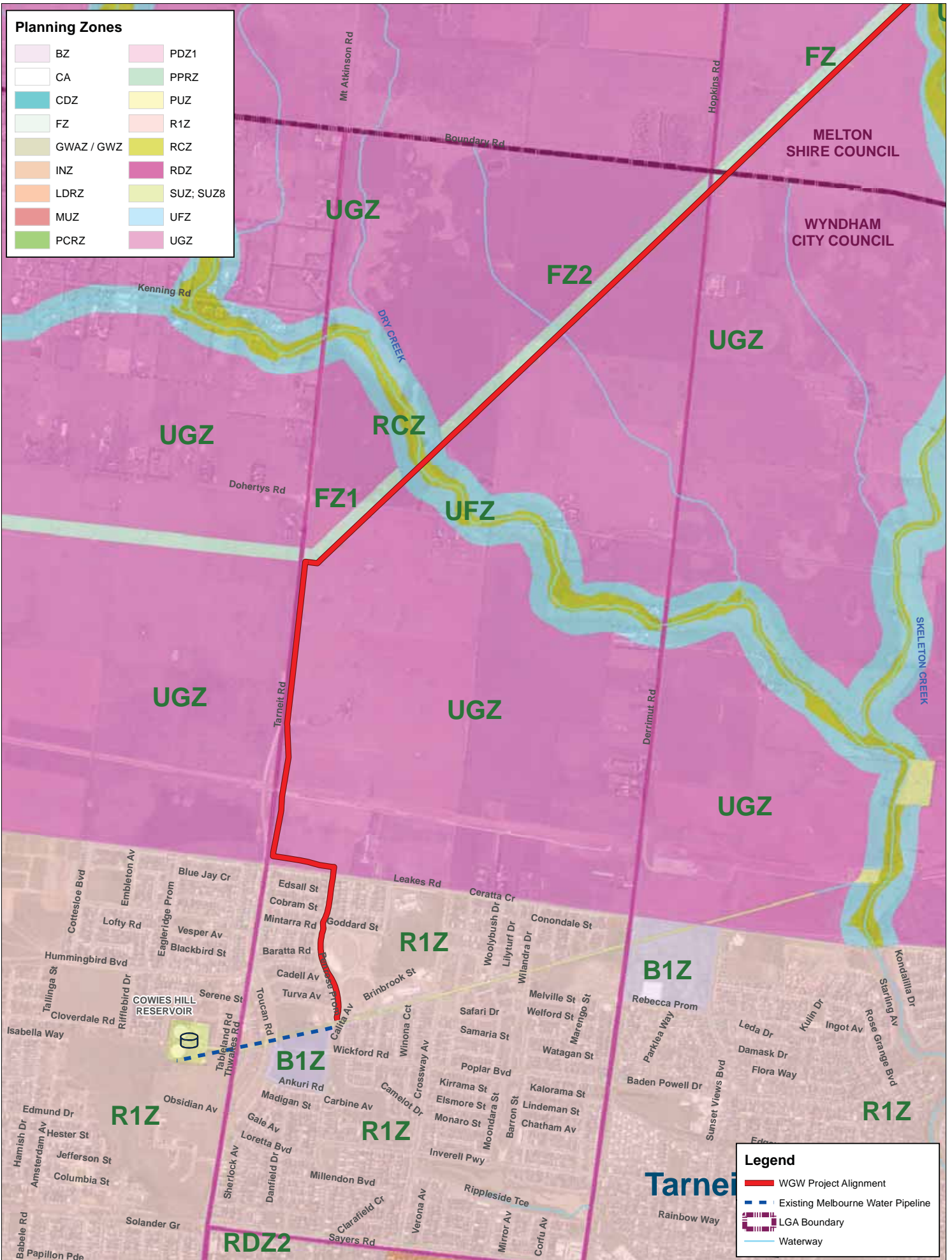
Map 3 of 5

| | |
|-----------------------------------|----------------------|
| PROJECT No. MEG302 | REVISION B |
| MAP No. MEG302-G-MAP-080-B | |

Disclaimer: While every care is taken to ensure the accuracy of this data, KBR makes no representations or warranties about its accuracy, reliability, completeness or suitability for any particular purpose and disclaims all responsibility and all liability (including and without limitation, liability in negligence) for all expenses, losses, damages (including indirect or consequential damage) and costs which you might incur as a result of the data being inaccurate or incomplete in anyway and for any reason.

Planning Zones

| | |
|------------|-----------|
| BZ | PDZ1 |
| CA | PPRZ |
| CDZ | PUZ |
| FZ | R1Z |
| GWAZ / GWZ | RCZ |
| INZ | RDZ |
| LDRZ | SUZ; SUZ8 |
| MUZ | UFZ |
| PCRZ | UGZ |



Legend

- WGW Project Alignment
- - - Existing Melbourne Water Pipeline
- LGA Boundary
- Waterway



N
0 0.5 1 km 1:15,000 @ A3

SOURCE Melbourne Water, Vicmap, DSE, City West Water

| | | |
|---|--|----------------------------|
| GIS FILE O:\GIS\MEG302_StAlbans_Werribee_MWData_Control Maps\MXD\Issued\MEG302-G-MAP-080-B.mxd | COORDINATE SYSTEM GDA 1994 MGA Zone 55 | DATE 17 Dec 2013 |
|---|--|----------------------------|

Kellogg, Brown & Root Pty Ltd

KBR

Kellogg, Brown & Root Pty Ltd ABN 91 007 660 317
Level 3, 441 St Kilda Rd, Melbourne VIC 3004

Prepared: JC, Checked: CV

TITLE
WATER FOR A GROWING WEST
St Albans to Werribee Main Stage 2

Planning Zones Maps

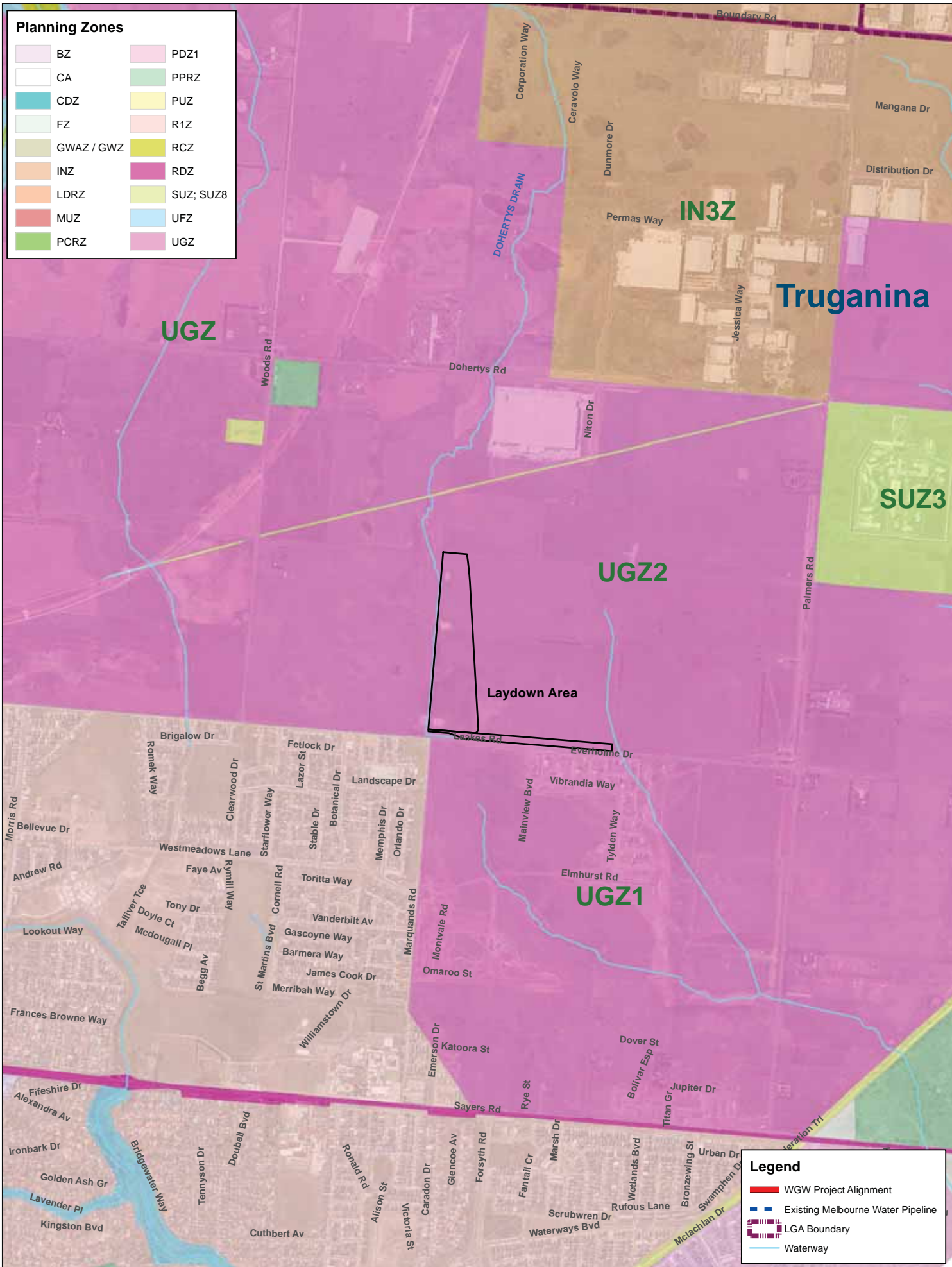
Map 4 of 5

| | |
|-----------------------------------|----------------------|
| PROJECT No. MEG302 | REVISION B |
| MAP No. MEG302-G-MAP-080-B | |

Disclaimer: While every care is taken to ensure the accuracy of this data, KBR makes no representation or warranties about its accuracy, reliability, completeness or suitability for any particular purpose and disclaims all responsibility and all liability (including and without limitation, liability in negligence) for all expenses, losses, damages (including indirect or consequential damage) and costs which you might incur as a result of the data being inaccurate or incomplete in anyway and for any reason.

Planning Zones

| | |
|------------|-----------|
| BZ | PDZ1 |
| CA | PPRZ |
| CDZ | PUZ |
| FZ | R1Z |
| GWAZ / GWZ | RCZ |
| INZ | RDZ |
| LDRZ | SUZ; SUZ8 |
| MUZ | UFZ |
| PCRZ | UGZ |



N
0 0.5 1 km 1:15,000 @ A3

SOURCE Melbourne Water, Vicmap, DSE, City West Water

GIS FILE O:\GIS\MEG302_StAlbans_Werribee_MWDData_Control\Waps\MXD\Issued\MEG302-G-MAP-080-B.mxd

COORDINATE SYSTEM GDA 1994 MGA Zone 55

DATE 17 Dec 2013

Kellogg, Brown & Root Pty Ltd

KBR

Kellogg, Brown & Root Pty Ltd ABN 91 007 660 317
Level 3, 441 St Kilda Rd, Melbourne VIC 3004

Prepared: JC, Checked: CV

Legend

- WGW Project Alignment
- Existing Melbourne Water Pipeline
- LGA Boundary
- Waterway

TITLE
WATER FOR A GROWING WEST
St Albans to Werribee Main Stage 2

Planning Zones Maps

PROJECT No. MEG302

MAP No. MEG302-G-MAP-080-B

REVISION
B

Map 5 of 5

Disclaimer: While every care is taken to ensure the accuracy of this data, KBR makes no representations or warranties about its accuracy, reliability, completeness or suitability for any particular purpose and disclaims all responsibility and all liability (including and without limitation, liability in negligence) for all expenses, losses, damages (including indirect or consequential damage) and costs which you might incur as a result of the data being inaccurate or incomplete in anyway and for any reason.