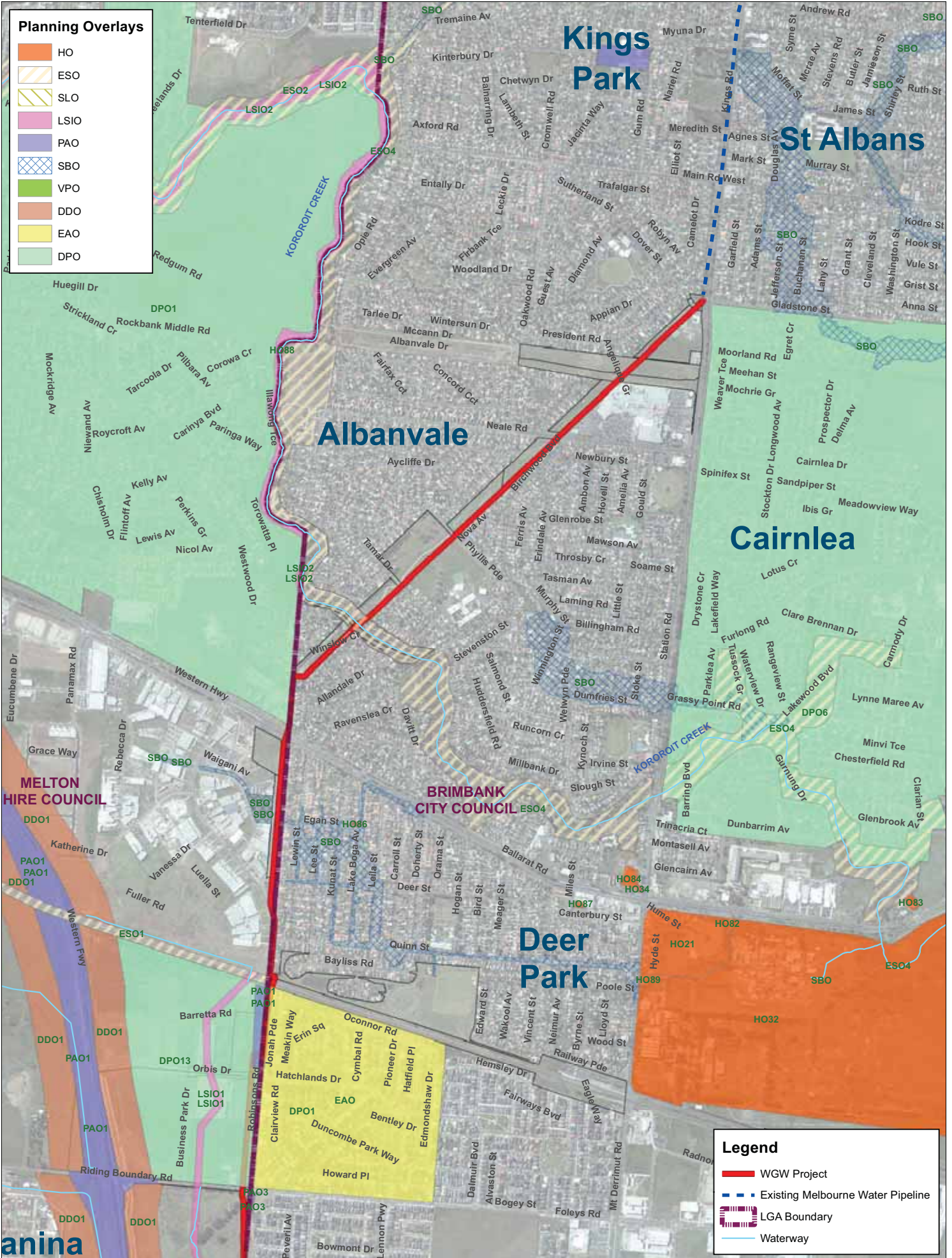






**Planning Overlays**

-  HO
-  ESO
-  SLO
-  LSIO
-  PAO
-  SBO
-  VPO
-  DDO
-  EAO
-  DPO



**Legend**

-  WGW Project
-  Existing Melbourne Water Pipeline
-  LGA Boundary
-  Waterway



N  
0 0.5 1 km 1:15,000 @ A3

**SOURCE** Melbourne Water, Vicmap, DSE, City West Water

**GIS FILE** O:\GIS\MEG302\_StAlbans\_Werribee\_MWData\_Control\Wpms\MXD\Issues\MEG302-G-MAP-081-B.mxd

**COORDINATE SYSTEM** GDA 1994 MGA Zone 55

**DATE** 17 Dec 2013

Kellogg, Brown & Root Pty Ltd

**KBR**

Kellogg, Brown & Root Pty Ltd ABN 91 007 660 317  
Level 3, 441 St Kilda Rd, Melbourne VIC 3004

Prepared: JC, Checked: JK

**TITLE**  
WATER FOR A GROWING WEST  
St Albans to Werribee Main Stage 2

Planning Overlays Maps

Map 1 of 5

**PROJECT No.** MEG302

**MAP No.** MEG302-G-MAP-081-B

**REVISION**  
B

Disclaimer: While every care is taken to ensure the accuracy of this data, KBR makes no representations or warranties about its accuracy, reliability, completeness or suitability for any particular purpose and disclaims all responsibility and all liability (including and without limitation, liability in negligence) for all expenses, losses, damages (including indirect or consequential damage) and costs which you might incur as a result of the data being inaccurate or incomplete in anyway and for any reason.

**Planning Overlays**

- HO
- ESO
- SLO
- LSIO
- PAO
- SBO
- VPO
- DDO
- EAO
- DPO

Ravenhall

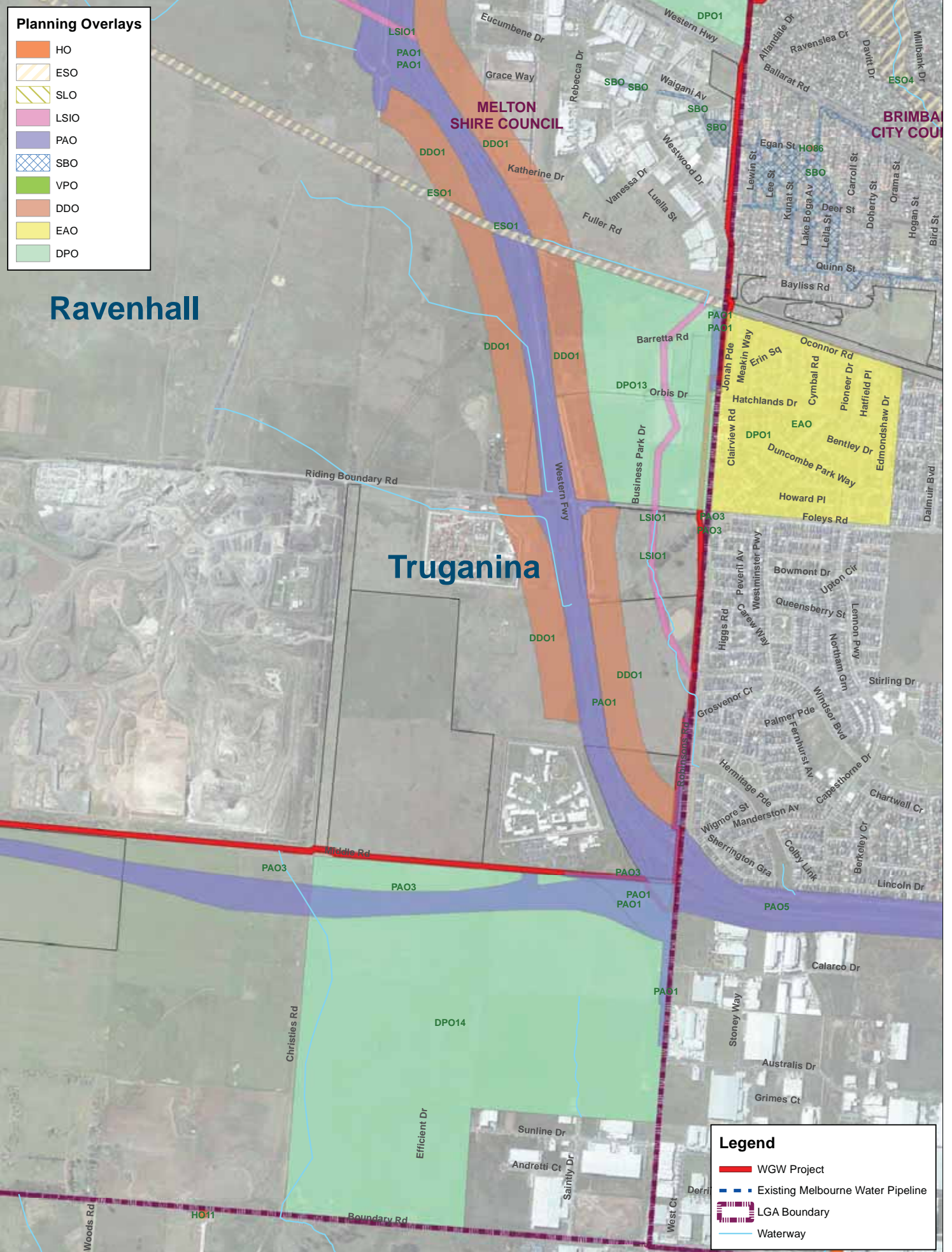
Truganina

BRIMBANK CITY COUNCIL

MELTON SHIRE COUNCIL

**Legend**

- WGW Project
- Existing Melbourne Water Pipeline
- LGA Boundary
- Waterway



**N**  
0 0.5 1 km 1:15,000 @ A3

**SOURCE** Melbourne Water, Vicmap, DSE, City West Water

**GIS FILE** O:\G&IGIS\MEG302\_StAlbans\_Werribee\_MWData\_Control\Waps\MXD\Issued\MEG302-G-MAP-081-B.mxd

**COORDINATE SYSTEM** GDA 1994 MGA Zone 55

**DATE** 17 Dec 2013

Kellogg, Brown & Root Pty Ltd

**KBR**

Kellogg, Brown & Root Pty Ltd ABN 91 007 660 317  
Level 3, 441 St Kilda Rd, Melbourne VIC 3004

Prepared: JC, Checked: JK

**TITLE**  
WATER FOR A GROWING WEST  
St Albans to Werribee Main Stage 2

Planning Overlays Maps

Map 2 of 5

**PROJECT No.** MEG302

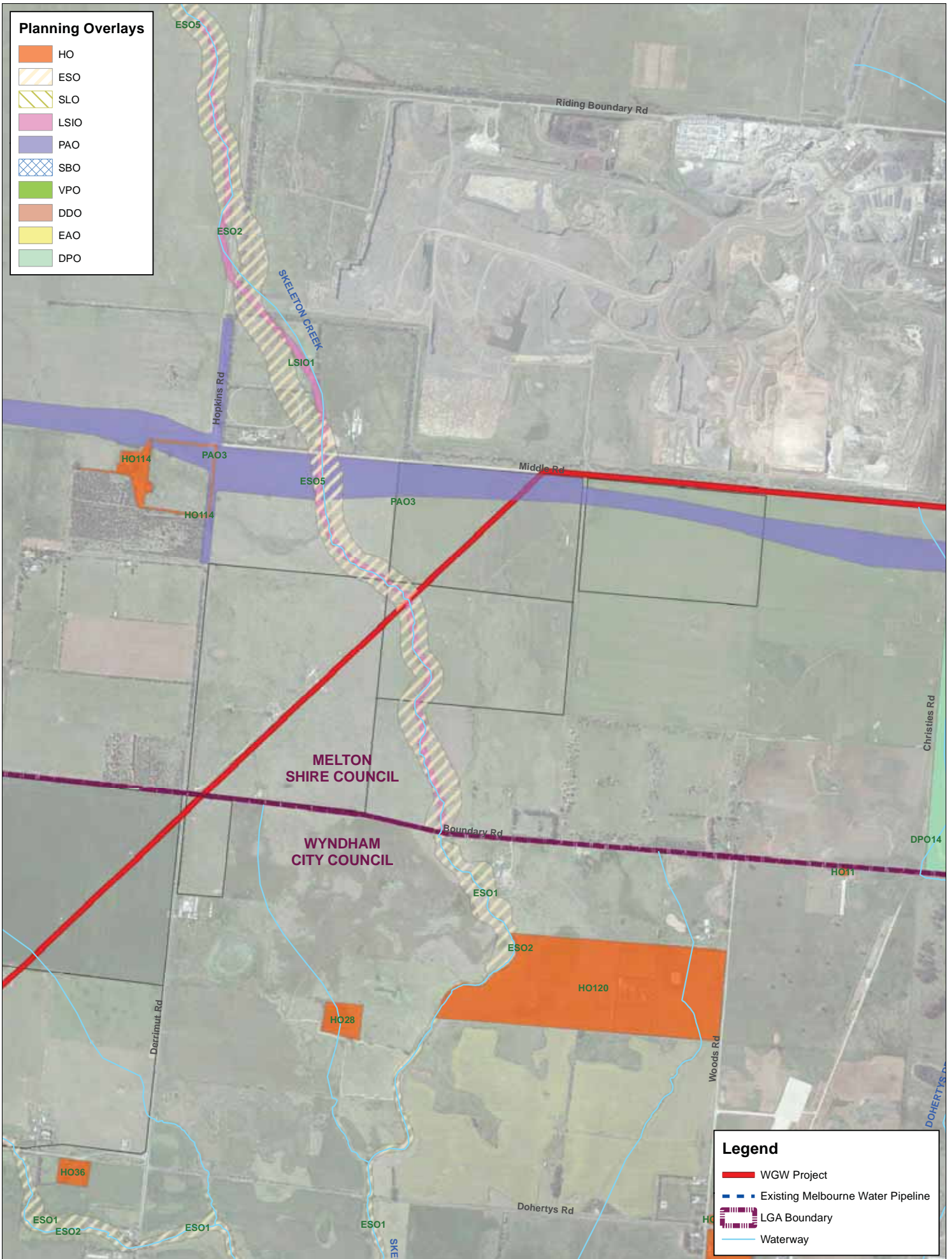
**MAP No.** MEG302-G-MAP-081-B

**REVISION**  
B





Disclaimer: While every care is taken to ensure the accuracy of this data, KBR makes no representations or warranties about its accuracy, reliability, completeness or suitability for any particular purpose and disclaims all responsibility and all liability (including and without limitation, liability in negligence) for all expenses, losses, damages (including indirect or consequential damage) and costs which you might incur as a result of the data being inaccurate or incomplete in anyway and for any reason.

**Planning Overlays**

-  HO
-  ESO
-  SLO
-  LSIO
-  PAO
-  SBO
-  VPO
-  DDO
-  EAO
-  DPO



**Legend**

-  WGW Project
-  Existing Melbourne Water Pipeline
-  LGA Boundary
-  Waterway




N

0 0.5 1 km 1:15,000 @ A3

**SOURCE** Melbourne Water, Vicmap, DSE, City West Water

GIS FILE	COORDINATE SYSTEM	DATE
O:\GIS\IGIS\MEG302_StAlbans_Werribee_MWData_Control\Waps\MXD\Issued\MEG302-G-MAP-081-B.mxd	GDA 1994 MGA Zone 55	17 Dec 2013

Kellogg, Brown & Root Pty Ltd



Kellogg, Brown & Root Pty Ltd ABN 91 007 660 317  
Level 3, 441 St Kilda Rd, Melbourne VIC 3004

Prepared: JC, Checked: JK

**TITLE**  
WATER FOR A GROWING WEST  
St Albans to Werribee Main Stage 2

Planning Overlays Maps

PROJECT No. MEG302

MAP No. MEG302-G-MAP-081-B

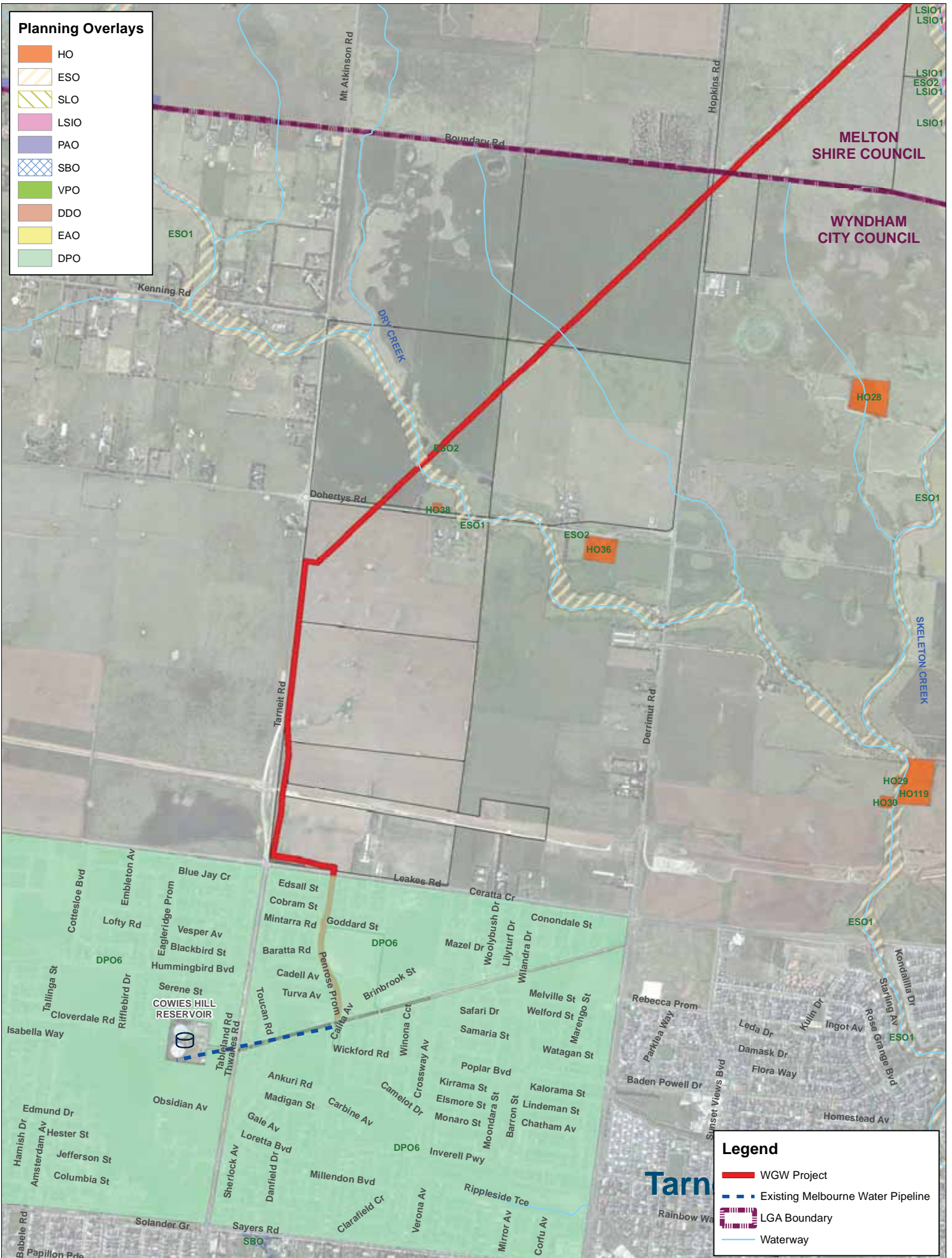
REVISION  
B

Map 3 of 5

Disclaimer: While every care is taken to ensure the accuracy of this data, KBR makes no representations or warranties about its accuracy, reliability, completeness or suitability for any particular purpose and disclaims all responsibility and all liability (including and without limitation, liability in negligence) for all expenses, losses, damages (including indirect or consequential damage) and costs which you might incur as a result of the data being inaccurate or incomplete in anyway and for any reason.

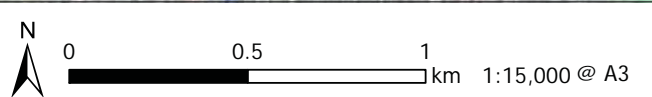
**Planning Overlays**

- HO
- ESO
- SLO
- LSI0
- PAO
- SBO
- VPO
- DDO
- EAO
- DPO



**Legend**

- WGW Project
- Existing Melbourne Water Pipeline
- LGA Boundary
- Waterway



<b>SOURCE</b> Melbourne Water, Vicmap, DSE, City West Water		
<b>GIS FILE</b> O:\GIS\IGIS\MEG302_StAlbans_Werribee_MWData_Control Waps\MXD\Issues\MEG302-G-MAP-081-B.mxd	<b>COORDINATE SYSTEM</b> GDA 1994 MGA Zone 55	<b>DATE</b> 17 Dec 2013

Kellogg, Brown & Root Pty Ltd

**KBR**

Kellogg, Brown & Root Pty Ltd ABN 91 007 660 317  
Level 3, 441 St Kilda Rd, Melbourne VIC 3004

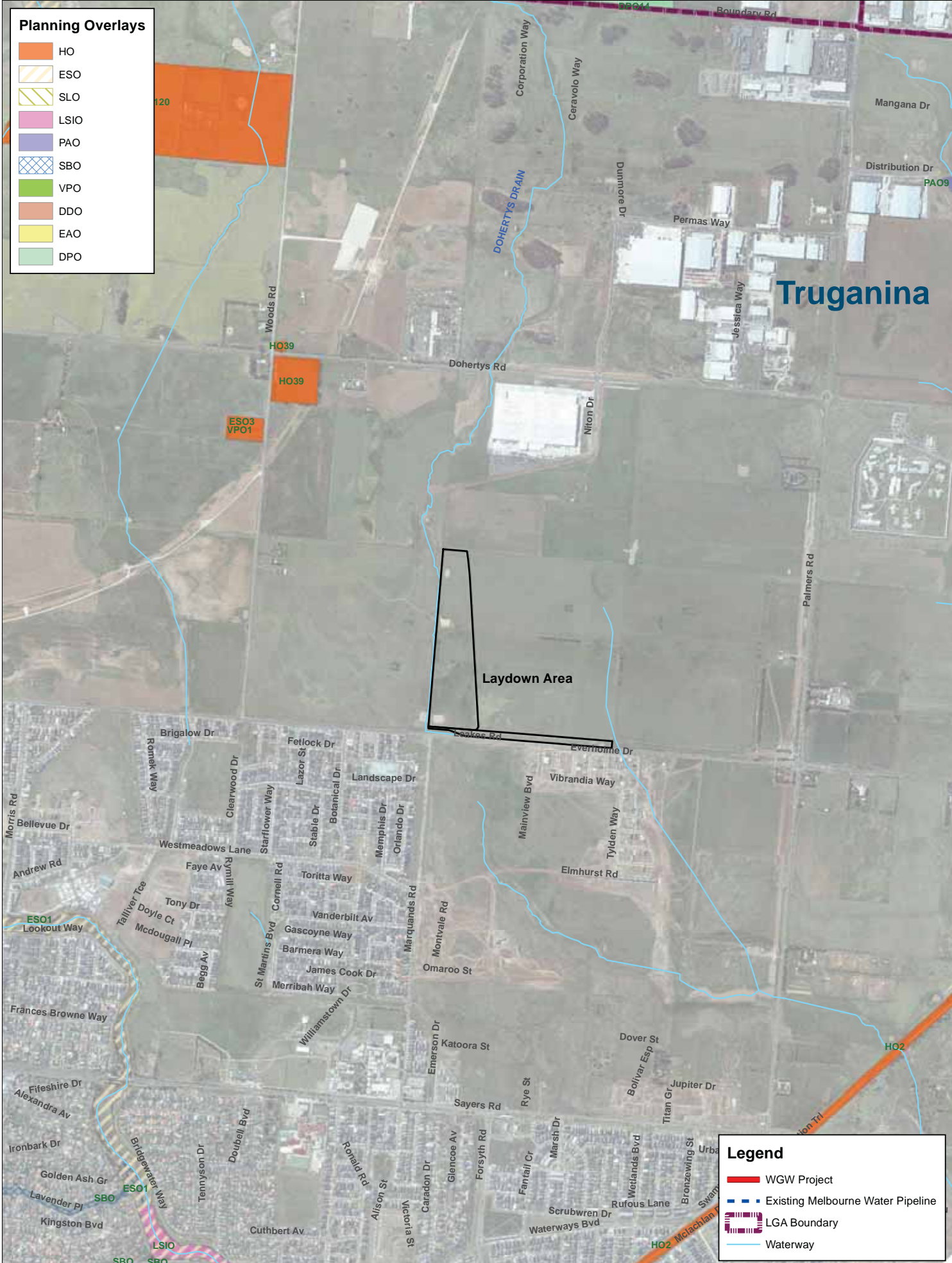
Prepared: JC, Checked: JK

<b>TITLE</b> WATER FOR A GROWING WEST St Albans to Werribee Main Stage 2	
Planning Overlays Maps	
Map 4 of 5	
<b>PROJECT No.</b> MEG302	<b>REVISION</b> B
<b>MAP No.</b> MEG302-G-MAP-081-B	

Disclaimer: While every care is taken to ensure the accuracy of this data, KBR makes no representations or warranties about its accuracy, reliability, completeness or suitability for any particular purpose and disclaims all responsibility and all liability (including and without limitation, liability in negligence) for all expenses, losses, damages (including indirect or consequential damage) and costs which you might incur as a result of the data being inaccurate or incomplete in anyway and for any reason.

**Planning Overlays**

- HO
- ESO
- SLO
- LSIO
- PAO
- SBO
- VPO
- DDO
- EAO
- DPO



# Truganina

Laydown Area

**Legend**

- WGW Project
- Existing Melbourne Water Pipeline
- LGA Boundary
- Waterway



N  
0 0.5 1 km 1:15,000 @ A3

**SOURCE** Melbourne Water, Vicmap, DSE, City West Water

**GIS FILE** O:\G&IGIS\MEG302\_StAlbans\_Werribee\_MWDData\_Control\Waps\WXD\Issues\MEG302-G-MAP-081-B.mxd

**COORDINATE SYSTEM** GDA 1994 MGA Zone 55

**DATE** 17 Dec 2013

Kellogg, Brown & Root Pty Ltd

**KBR**

Kellogg, Brown & Root Pty Ltd ABN 91 007 660 317  
Level 3, 441 St Kilda Rd, Melbourne VIC 3004

Prepared: JC, Checked: JK

**TITLE**  
WATER FOR A GROWING WEST  
St Albans to Werribee Main Stage 2

Planning Overlays Maps

Map 5 of 5

**PROJECT No.** MEG302

**MAP No.** MEG302-G-MAP-081-B

**REVISION**  
B

Disclaimer: While every care is taken to ensure the accuracy of this data, KBR makes no representations or warranties about its accuracy, reliability, completeness or suitability for any particular purpose and disclaims all responsibility and all liability (including and without limitation, liability in negligence) for all expenses, losses, damages (including indirect or consequential damage) and costs which you might incur as a result of the data being inaccurate or incomplete in anyway and for any reason.