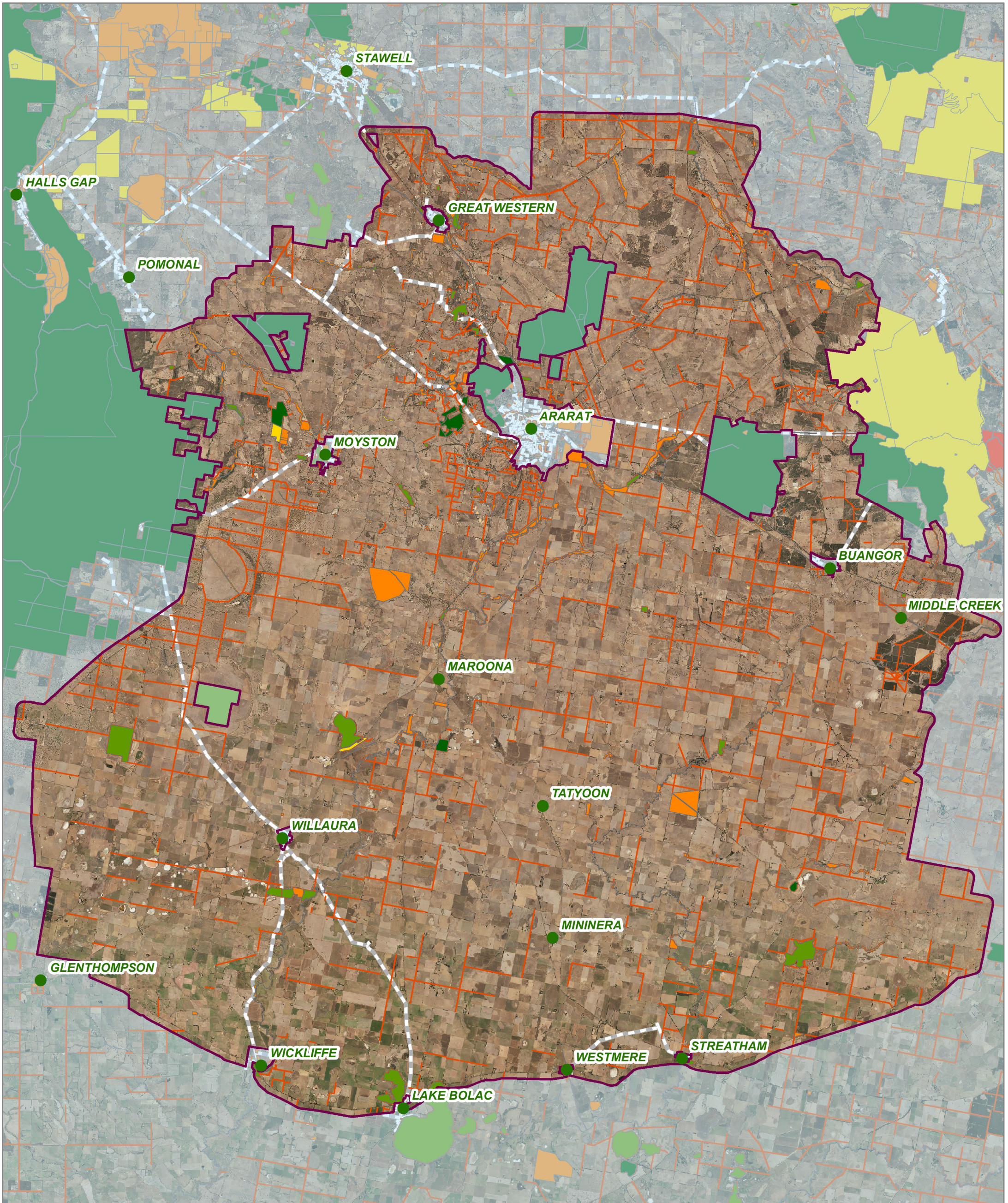


Crown Land Categories

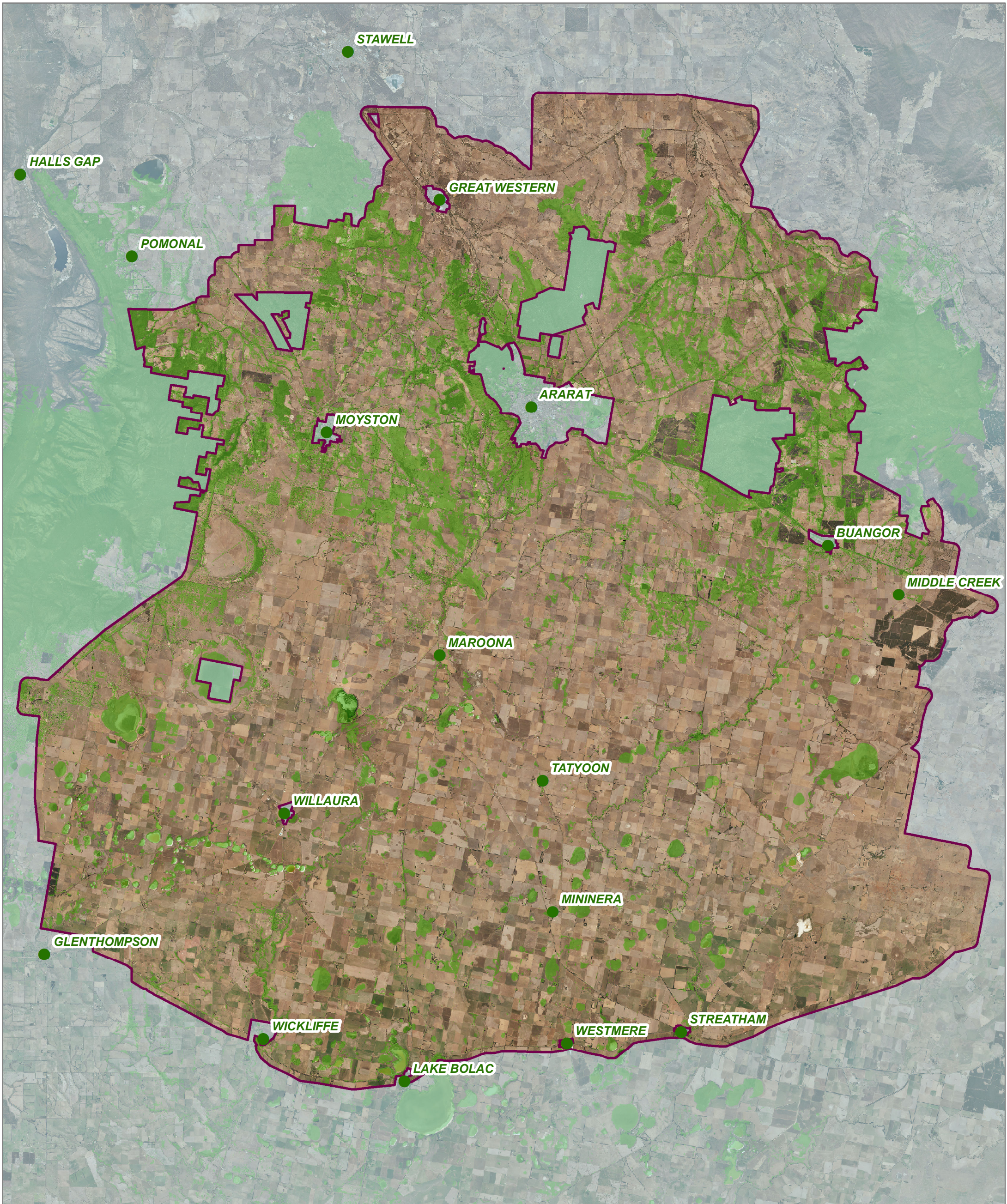


Condition of Use:
 Geographic Information System (GIS) information is provided by GWMWater to external parties on the understanding it will only be used for the project intended. The information provided must not be used in whole or in part for any other use without prior approval from GWMWater. The information is intended to be indicative only. External parties should make their own enquiries to ensure the accuracy of the information. GWMWater takes no responsibility for inaccurate or misleading data.

Prepared by: Dean Robertson
 Published date: 5 March 2019

Legend	
	NATIONAL PARKS ACT AND NATURE CONSERVATION RESERVES
	OTHER CONSERVATION RESERVES
	COMMONWEALTH LAND
	STATE FOREST
	OTHER PUBLIC LAND
	PLANTATION

Native Vegetation Cover



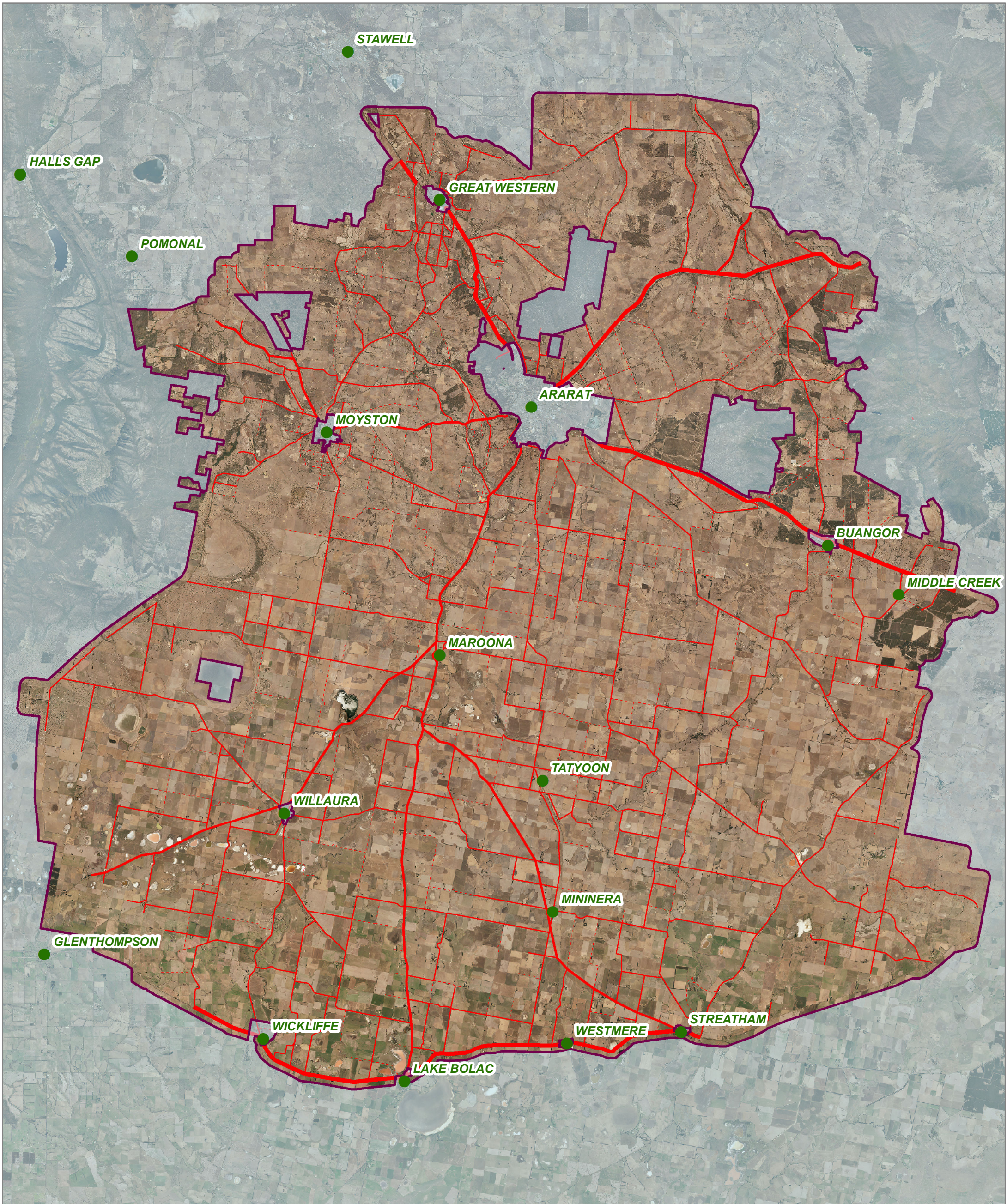
Condition of Use:
 Geographic Information System (GIS) information is provided by GMMWater to external parties on the understanding it will only be used for the project intended. The information provided must not be used in whole or in part for any other use without prior approval from GMMWater. The information is intended to be indicative only. External parties should make their own enquiries to ensure the accuracy of the information. GMMWater takes no responsibility for inaccurate or misleading data.

Prepared by: Dean Robertson
 Published date: 5 March 2019

Legend

- Main Towns
- Project Extent
- Native Vegetation

Roads

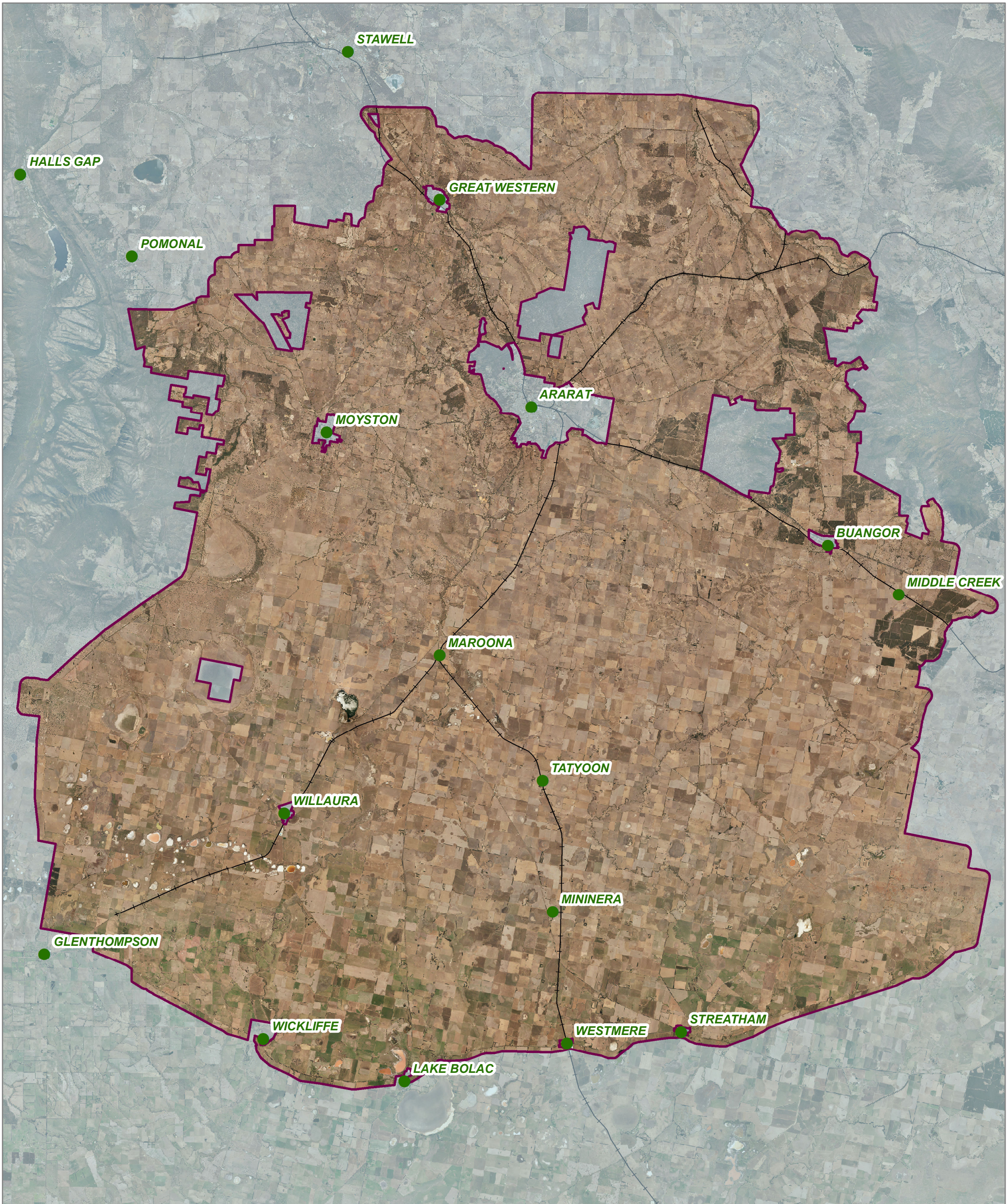


Condition of Use:
 Geographic Information System (GIS) information is provided by GMMWater to external parties on the understanding it will only be used for the project intended. The information provided must not be used in whole or in part for any other use without prior approval from GMMWater. The information is intended to be indicative only. External parties should make their own enquiries to ensure the accuracy of the information. GMMWater takes no responsibility for inaccurate or misleading data.

Prepared by: Dean Robertson
 Published date: 5 March 2019

Legend		Roads	
	Main Towns		Highways
	Project Extent		Secondary Road
			Minor Road
			Tracks

Railroads



Condition of Use:
Geographic Information System (GIS) information is provided by GMMWater to external parties on the understanding it will only be used for the project intended. The information provided must not be used in whole or in part for any other use without prior approval from GMMWater. The information is intended to be indicative only. External parties should make their own enquiries to ensure the accuracy of the information. GMMWater takes no responsibility for inaccurate or misleading data.

Prepared by: Dean Robertson
Published date: 5 March 2019

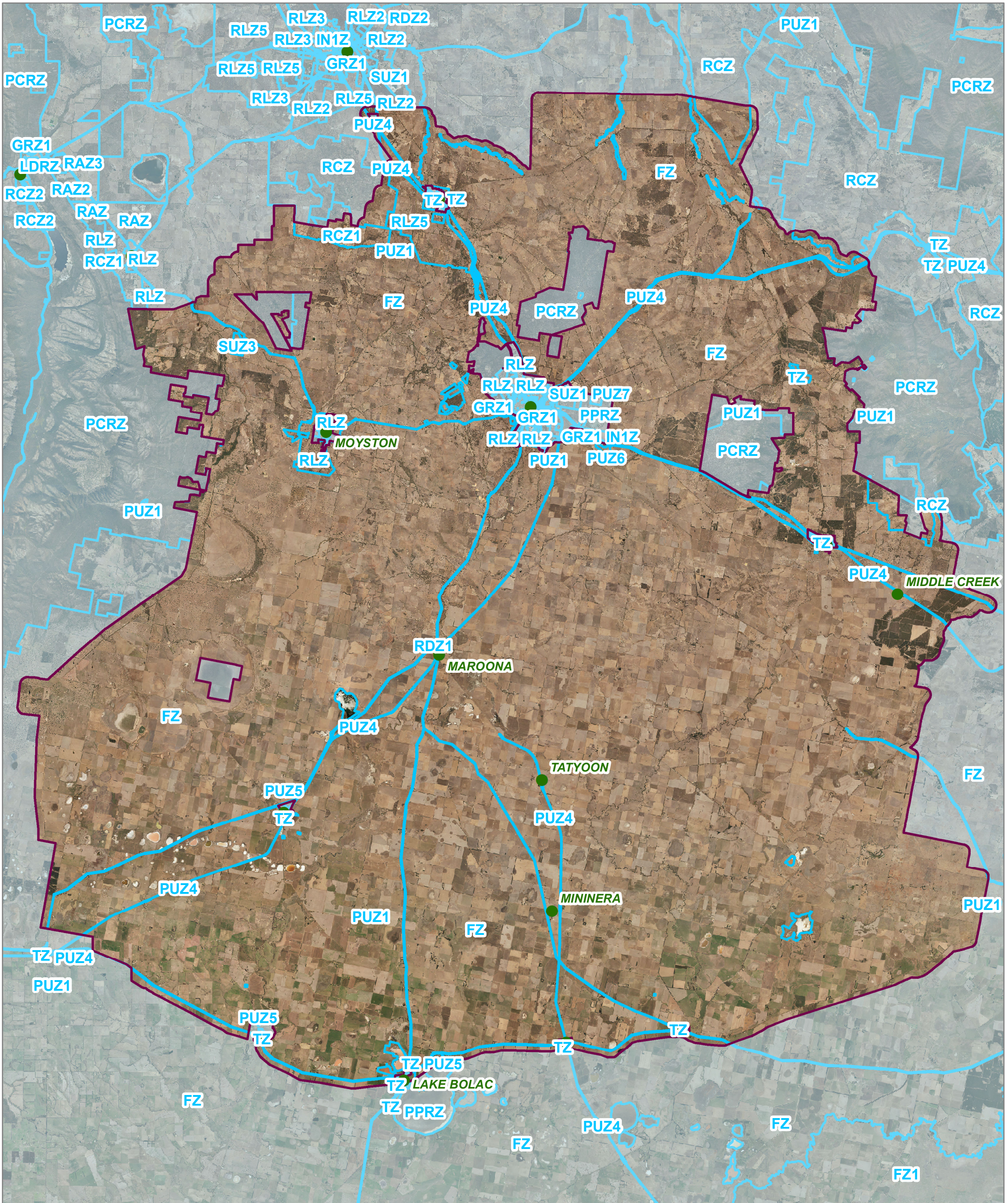
0 5 10 Kilometres

Legend

- Main Towns
- Project Extent
- Railroads



Planning Scheme Zones



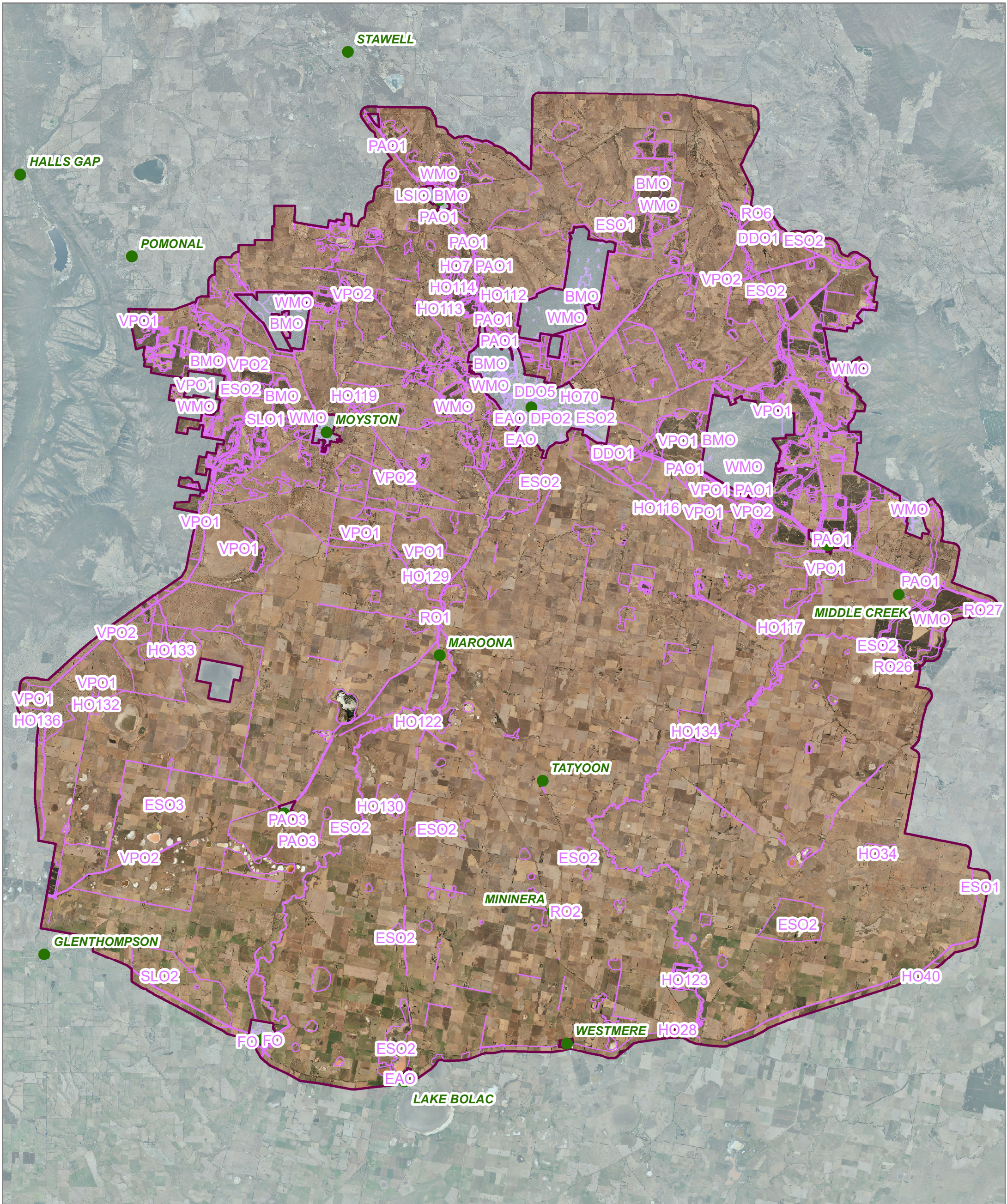
Condition of Use:
 Geographic Information System (GIS) information is provided by GWMWater to external parties on the understanding it will only be used for the project intended. The information provided must not be used in whole or in part for any other use without prior approval from GWMWater. The information is intended to be indicative only. External parties should make their own enquiries to ensure the accuracy of the information. GWMWater takes no responsibility for inaccurate or misleading data.

Prepared by: Dean Robertson
 Published date: 5 March 2019

Legend

- Main Towns
- ▭ Project Extent
- ▭ Planning Zones

Planning Scheme Overlays



Condition of Use:
 Geographic Information System (GIS) information is provided by GWMWater to external parties on the understanding it will only be used for the project intended. The information provided must not be used in whole or in part for any other use without prior approval from GWMWater. The information is intended to be indicative only. External parties should make their own enquiries to ensure the accuracy of the information. GWMWater takes no responsibility for inaccurate or misleading data.

Prepared by: Dean Robertson
 Published date: 5 March 2019

Legend

- Main Towns
- Project Extent
- Overlays