

Tottenhan TO Albury FFG Community Map

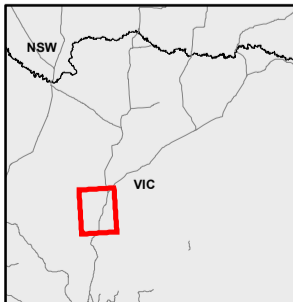
0 1,500 3,000 m

Coordinate System: GDA 1994 MGA Zone 55

ARTC makes no representation or warranty and assumes no duty of care or other responsibility to any party as to the completeness, accuracy or suitability of the information contained in this GIS map. The GIS map has been prepared from material provided to ARTC by an external source and ARTC has not taken any steps to verify the completeness, accuracy or suitability of that material. ARTC will not be responsible for any loss or damage suffered as a result of any person whatsoever placing reliance upon the information contained within this GIS map.

Date: 10-Oct-19 Paper: A3
 Author: MG Scale: 1:100,000
 Data Sources: ARTC, VicMap, DataVIC

- Enhancement Site Project Area
- Parks and Reserves (DELWP 2019)

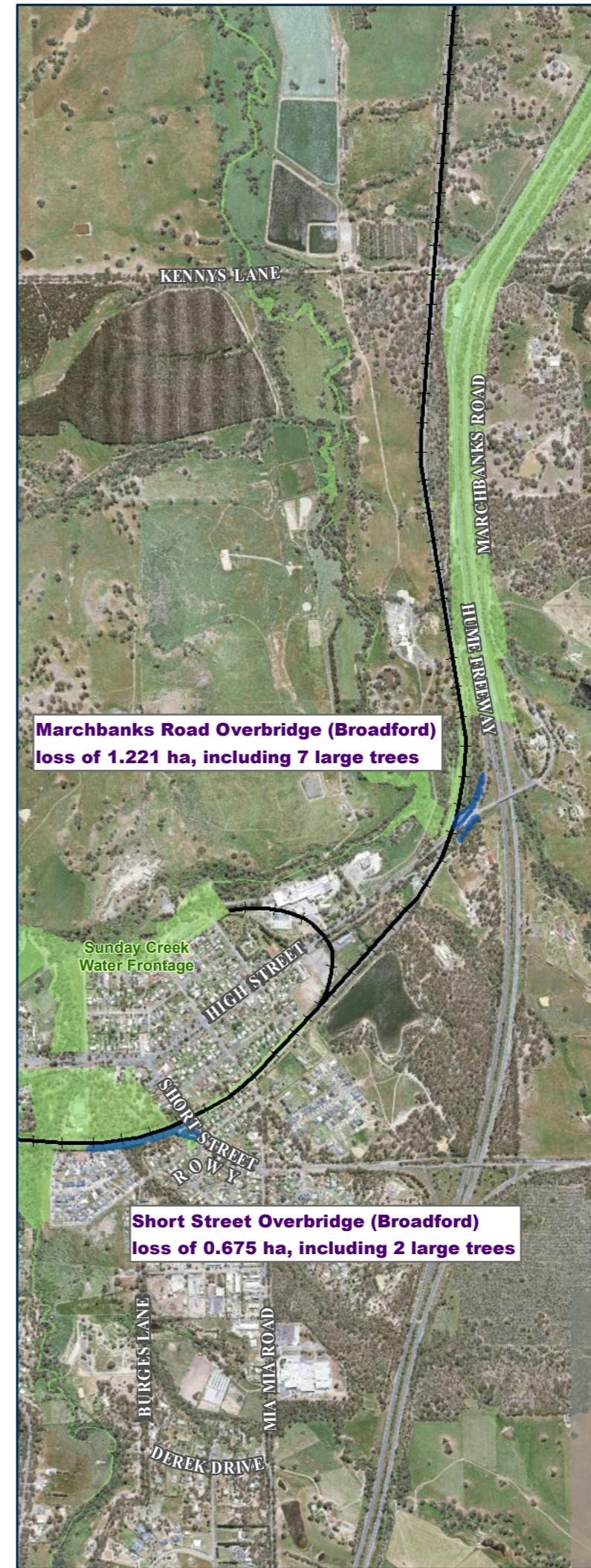
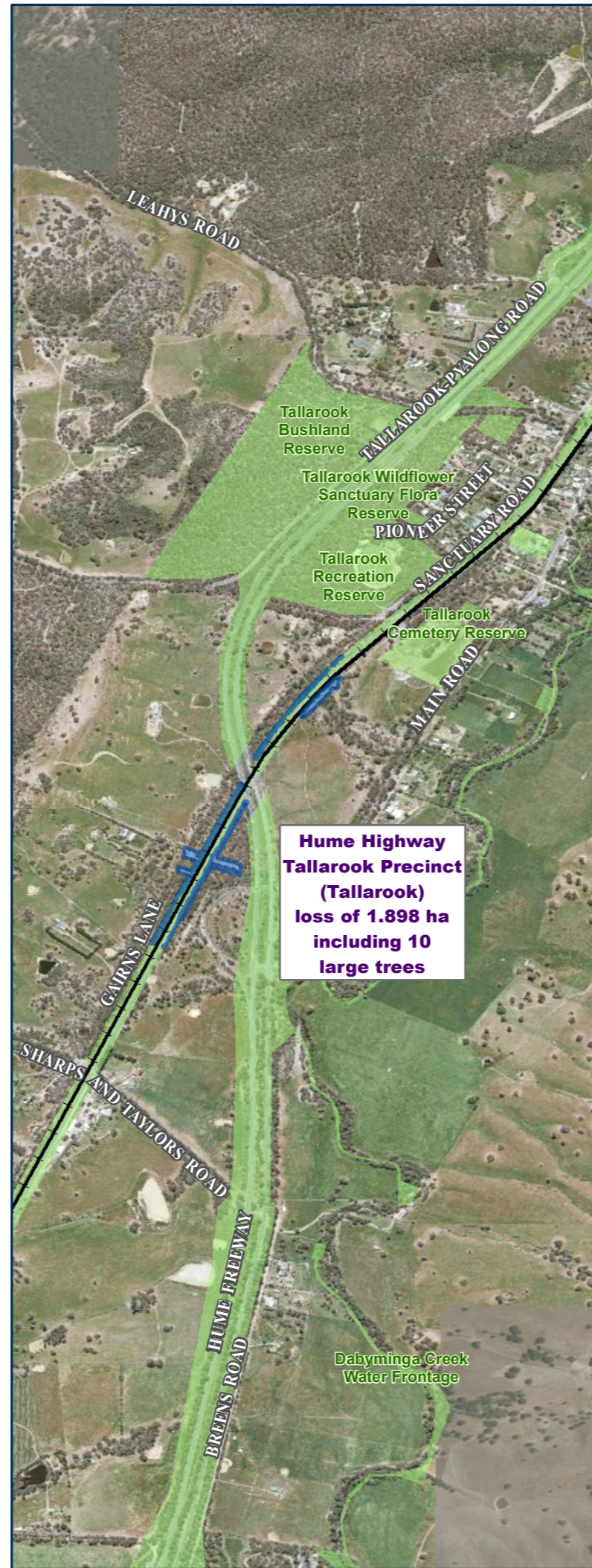
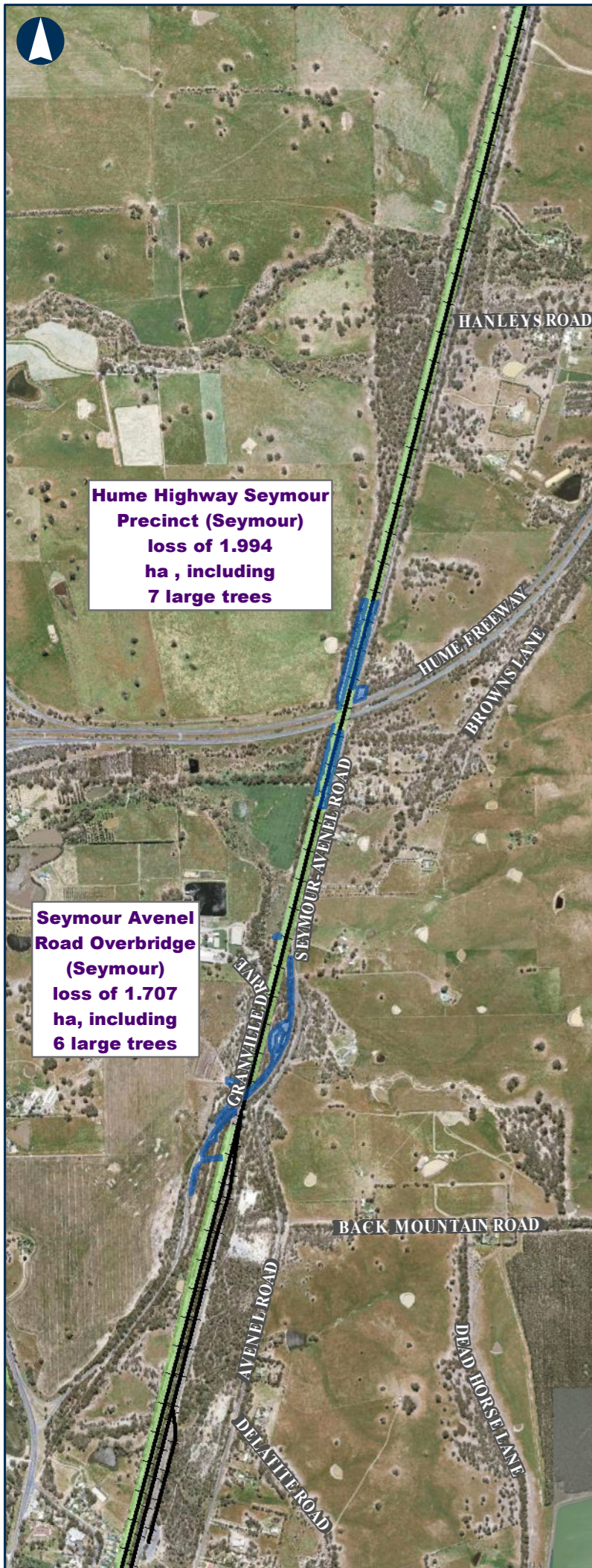


INLAND RAIL

ARTC

The Australian Government is delivering Inland Rail through the Australian Rail Track Corporation (ARTC), in partnership with the private sector.

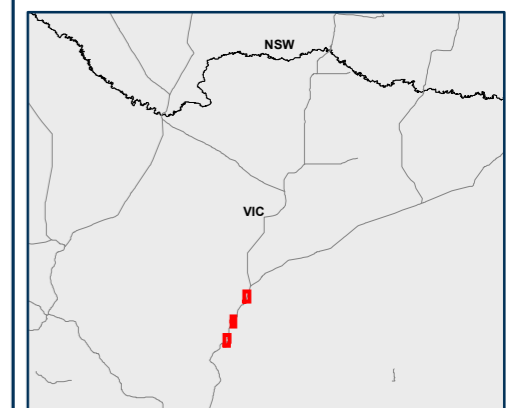
O:\GIS\SET757\70 percent deliverable\T2A_VIC\Documents\Maps\MXD\ARTC_IR_T2A_FFG_Communities_MAP1.mxd
 Service Layer Credits: Sources: Esri, HERE, Garmin, Intermap, increment P Corp., GEBCO, USGS, FAO, NPS, NRCAN, GeoBase, IGN, Kadaster NL, Ordnance Survey, Esri Japan, METI, Esri China (Hong Kong), (c) OpenStreetMap contributors, and the GIS User Community



Tottenham TO Albury

Victorian Temperate Woodland Bird Community Map

- Rail Line
- Victorian Temperate Woodland Bird Community Impacted
- Parks and Reserves (DELWP 2019)



0 400 800 Meters

Coordinate System: GDA 1994 MGA Zone 55

ARTC makes no representation or warranty and assumes no duty of care or other responsibility to any party as to the completeness, accuracy or suitability of the information contained in this GIS map. The GIS map has been prepared from material provided to ARTC by an external source and ARTC has not taken any steps to verify the completeness, accuracy or suitability of that material. ARTC will not be responsible for any loss or damage suffered as a result of any person whatsoever placing reliance upon the information contained within this GIS map.