

ENGAGING VICTORIANS WHERE *they* LIVE, WORK AND GATHER



An overview of our state-wide engagement program to develop a new plan for Victoria.



ACKNOWLEDGEMENT OF COUNTRY

We acknowledge and respect all Traditional Owners of Victoria as the original custodians of Victoria's land and waters and skies, their unique ability to care for Country and deep spiritual connection to it. We honour Elders past and present whose knowledge and wisdom has ensured the continuation of spiritual and cultural practices.

As we plan a future for Victoria, we recognise the direct impacts this has on Country and respect the rights and obligations of Traditional Owners to speak and make decisions for their Country.

We are committed to genuinely partner, and meaningfully engage, with Traditional Owners and the wider First Peoples Community to support the protection of Country, the maintenance of spiritual and cultural practices and their broader aspirations in the 21st century and beyond.



Description of artwork

Aaron (Gunaikurnai) 'Movements Between the Five Clans' 2019, acrylic on canvas.

'The tracks are going between the five clans of the Gunaikurnai and the hands are the symbols of my spirit travelling around the campsites.'

This artwork was created through programs provided by the Torch. The Torch provides art, cultural and arts industry support to Indigenous offenders and ex-offenders in Victoria. The Torch aims to reduce the rate of re-offending by encouraging the exploration of identity and culture through art programs to define new pathways upon release.

CONTENTS

ACKNOWLEDGEMENT OF COUNTRY	2	ENGAGEMENT OVERVIEW INSIGHTS	45
MINISTER'S FOREWORD	5	Phase one: November 2024 to December 2023	46
INTRODUCTION	6	Phase two: February 2024 to July 2024	48
A VISION FOR VICTORIA	8	Community engagement pop-up events	50
SNAPSHOT OF ENGAGEMENT	11	Online engagement	53
Local councils and industry leaders –		Thriving and liveable suburbs and towns	57
Understanding your vision for Victoria	14	Sustainable environments and climate action	58
The Victorian community –Understanding		Applying a gender lens	60
your vision for Victoria	15	A Ministerial roundtable on gender	62
HOW FEEDBACK SHAPED		Insights from older Victorians	64
THE PLAN FOR VICTORIA	18	Regional and rural perspective	66
What we heard	20	Discussion guides	70
AFFORDABLE HOUSING AND CHOICE	20	Young people	73
What we heard	24	TAFE and university students	77
EQUITY AND JOBS	24	School students	81
What we heard	28	Multicultural communities	85
THRIVING AND LIVEABLE		People experiencing disadvantage	89
SUBURBS AND TOWNS	28	People with disabilities	93
What we heard	32	Industry engagement event	97
SUSTAINABLE ENVIRONMENTS		Council engagement on housing targets	101
AND CLIMATE ACTION	32	Phase Three: July 2024 to August 2024	105
SELF DETERMINATION		Big Ideas survey	106
AND CARING FOR COUNTRY	36	Community events	108
Engaging with Traditional Owners	36	WRITTEN SUBMISSIONS	111
Our approach so far	38	Community Submissions	112
What we have heard	39	Local council submissions	114
Engaging with First Peoples	42	Industry submissions	118
Our approach so far	42	SHAPE VICTORIA PEOPLE'S PANEL	121
A living plan and continuous engagement	43	COMMUNITY ENGAGEMENT –	
		SHAPE VICTORIA PEOPLE'S PANEL	122
		Our approach	122
		The challenge	125
		Deliberation process	125
		Deciding on the final vision	125
		A LIVING PLAN	126
		ACKNOWLEDGEMENTS	128

BIG IDEAS *for* VICTORIA'S FUTURE

Which Big Idea is the most important to you?

AFFORDABLE HOUSING *and* CHOICE



More homes in locations with great public transport access



More housing options for all Victorians including social & affordable homes

EQUITY *and* JOBS




More jobs and opportunities closer to where you live



More options for how we move from place to place

THRIVING *and* LIVEABLE SUBURBS AND TOWNS



More certainty and guidance on how places will change over time



More trees and urban greening in our parks and community spaces

SUSTAINABLE ENVIRONMENTS *and* CLIMATE ACTION



More protections from flooding, bushfire and climate hazards



Greater protection of our agricultural land

BIG IDEAS *for* VICTORIA'S FUTURE



Tell us what you think about the Big Ideas on Engage Victoria.

MINISTER'S FOREWORD



The Hon. Sonya Kilkenny

Attorney General
Minister for Planning

We are developing a plan for Victoria,
and this plan will touch all of our lives.

It will impact where and how we live, how we connect and move from one place to another, how we access our workplaces, what our suburbs and towns will look and feel like, how we care for land, how we respect and work with the traditional custodians of the land, and how we continue to act on climate change.

This is a plan for all Victorians – a plan that is community-led and based on conversations with people all over the state. We have asked Victorians what they love about the places they live in, what they want to maintain, what they want to change, and what they can compromise on to ensure we create a plan that is equitable, fair and enduring – a plan that is based on a shared vision for Victoria.

We have travelled to all corners of the state to engage with people where they live, work and gather. We have visited regional areas such as Ballarat, Bendigo and Geelong. We have travelled to Mildura, Wodonga, Shepparton, Portland, Warrnambool, Cowes and Echuca. We have been to Melbourne's CBD, as well as suburbs such as Box Hill, Footscray, Preston, Sandringham, Frankston, Gisborne, Werribee and Mornington.

We have been to shopping centres, farmers markets and community festivals, and talked to people about what they love about their suburbs, towns and regions to understand their vision for a future Victoria.


Since February 2024, more than 110,000 Victorians have engaged with us online and in person. I've had the opportunity to attend many of the engagement sessions and I've heard loud and clear that a plan for Victoria needs to be inclusive of all Victorians. It needs to support all Victorians to have a home where they want to live and where they are well-connected to jobs, schools and services. It also needs to enhance and protect our green environments. These things will help us to create vibrant and safe communities where everyone can thrive.

The final vision for Victoria was developed by the independent Shape Victoria People's Panel who deliberated on the extensive feedback from across the full program of engagement.

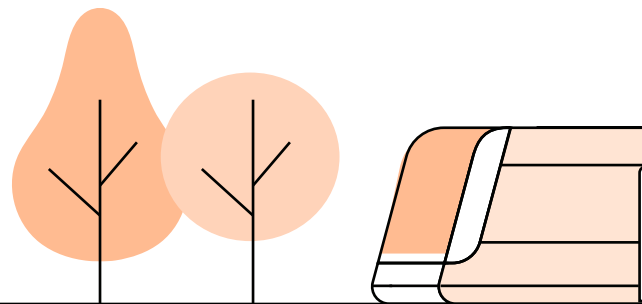
I am proud to deliver to you the findings from the biggest and most comprehensive program of engagement this state has ever done, and a vision for our state, written by Victorians for Victorians.

Together, the vision and engagement will inform the development of a plan for Victoria. This plan will be an investment in our future – one that will ensure that, as we grow, Victoria remains one of the most inclusive, equitable and liveable places in the world – because we are committed to delivering a better future for all Victorians for generations to come.

INTRODUCTION

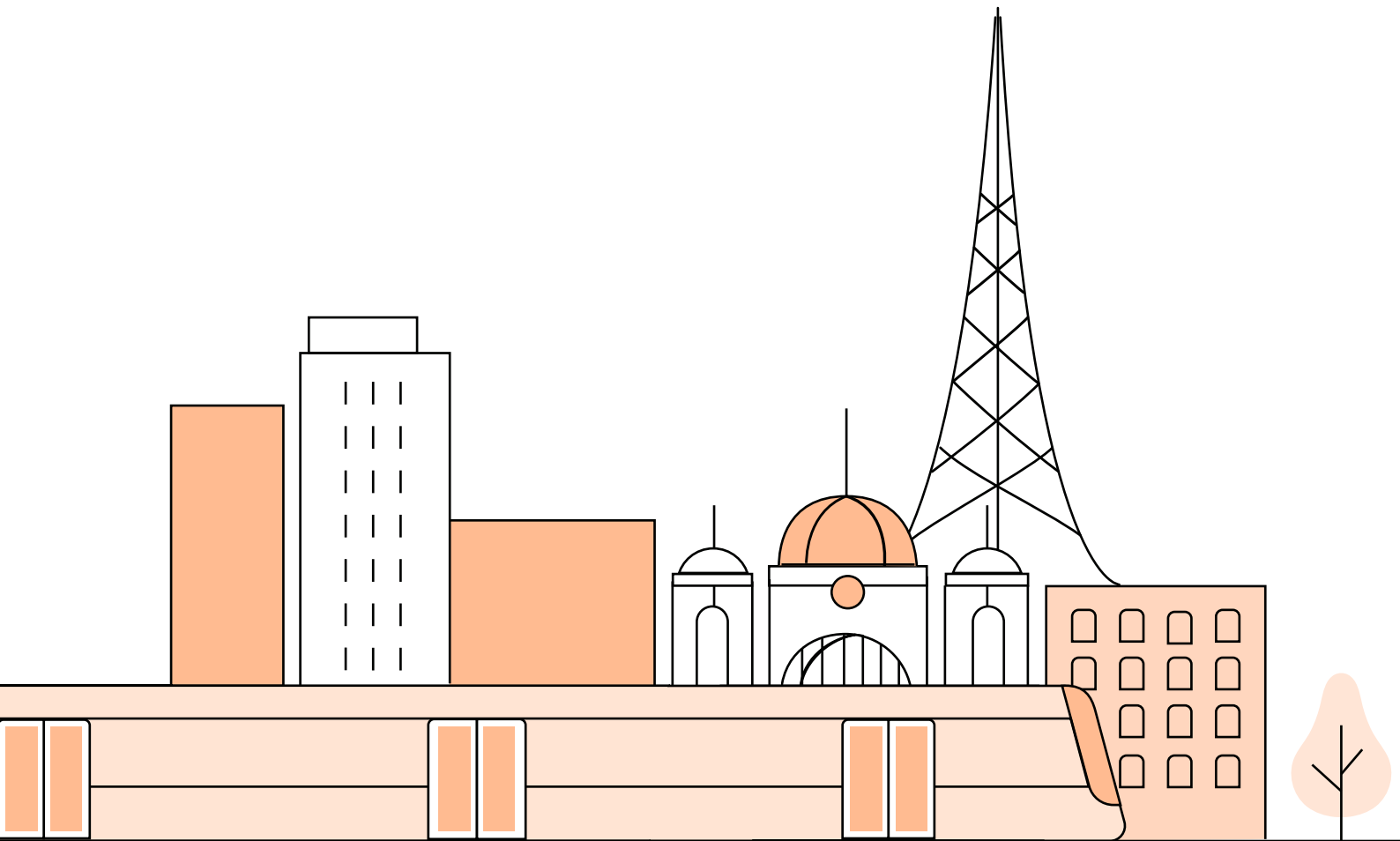


To make sure Victoria remains one of the best places in the world to live, work and do business and invest in, we've developed the first community-led plan for Victoria – a long-term, living plan that will guide the development of the state over the next 30 years.

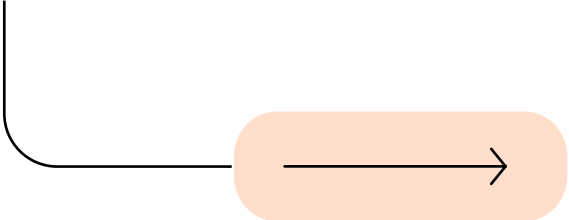


The plan has been written by Victorians – for Victorians. To do this, we embarked on Victoria’s largest public engagement program. We travelled to every corner of the state to ask Victorians what they love about where they live, and their vision for the future.

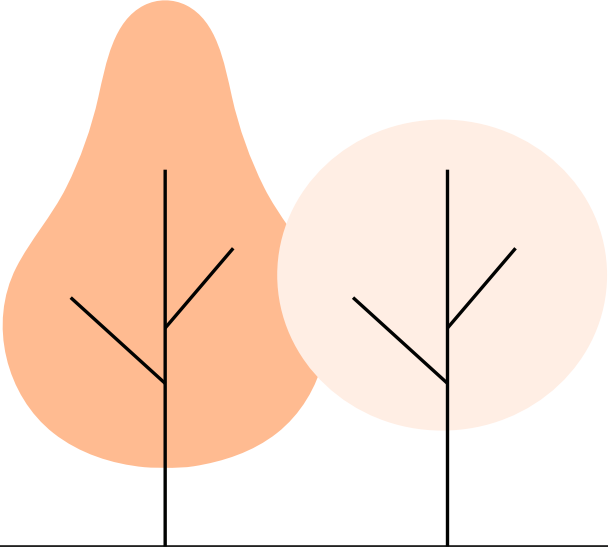
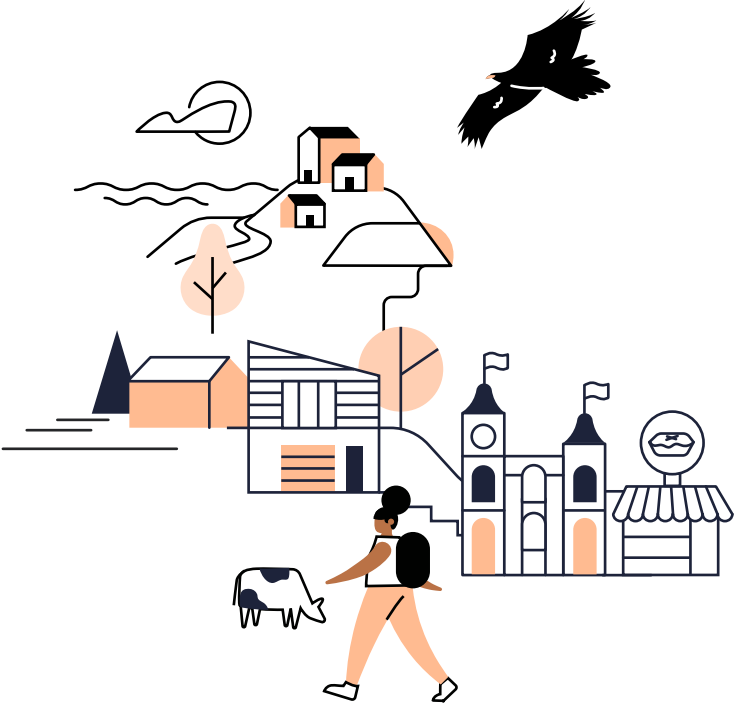
The new plan, which replaces and enhances Plan Melbourne 2017- 2050, will protect the things important to Victorians, while working to deliver more homes in vibrant, livable and sustainable suburbs and towns.



A VISION FOR VICTORIA



Written by Victorians
for Victorians

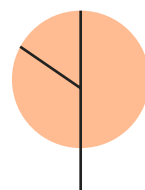


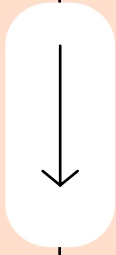
By 2050, Victoria will be a vibrant, accessible, and connected community, valued for its diverse cultures, sustainable environmental practices and respect for the First Peoples of Victoria.

Building a state which provides choices and opportunities for current and future generations of Victorians in quality housing, transport, employment, environment and connectivity will require inputs from community, government, local businesses and industries alike.

We will create a society which caters to the unique needs of all Victorians, nurturing individual health through physical and cultural recreation.

The vision for Victoria was written by the Shape Victoria People's Panel. See page 122 for more information about the Shape Victoria People's Panel.



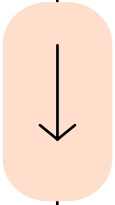


ENGAGING VICTORIANS WHERE
they **LIVE, WORK AND GATHER**



**SNAPSHOT OF
ENGAGEMENT**





To reach as many Victorians as possible, we embarked on Victoria's largest public engagement program.

Since February 2024, our engagement program has reached more than 110,000 Victorians either online or in-person.



SHARE YOUR FEEDBACK ON OUR BIG IDEAS



Tell us more about how we can shape the future of Victoria together



We have been travelling to every part of the state asking Victorians some big questions about the future, to help develop a plan that reflects the voices and diversity of all Victorians.

From your feedback so far, we have identified eight Big Ideas that will transform Victoria's future.

These Big Ideas will create a future that is liveable, sustainable and enriching - a future where Victorians feel healthy, empowered, safe and happy.

We need your feedback on how these Big Ideas can be delivered.

Let's create our future together!

Tell us what you think about these Big Ideas on Engage Victoria.



Our eight Big Ideas



More homes in locations with great public transport access



More housing options for all Victorians including social and affordable housing



More jobs and opportunities closer to where you live



More options for how we move from place to place



More certainty and guidance on how places will change over time



More trees and urban greening in our parks and community spaces

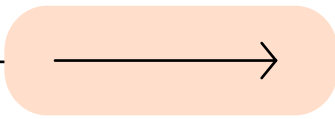
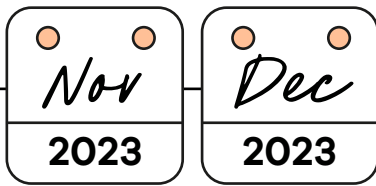


More protections from flooding, bushfire and climate hazards



Greater protection of our agricultural land

PHASE ONE

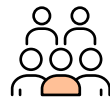


LOCAL COUNCILS AND INDUSTRY LEADERS – UNDERSTANDING YOUR VISION FOR VICTORIA

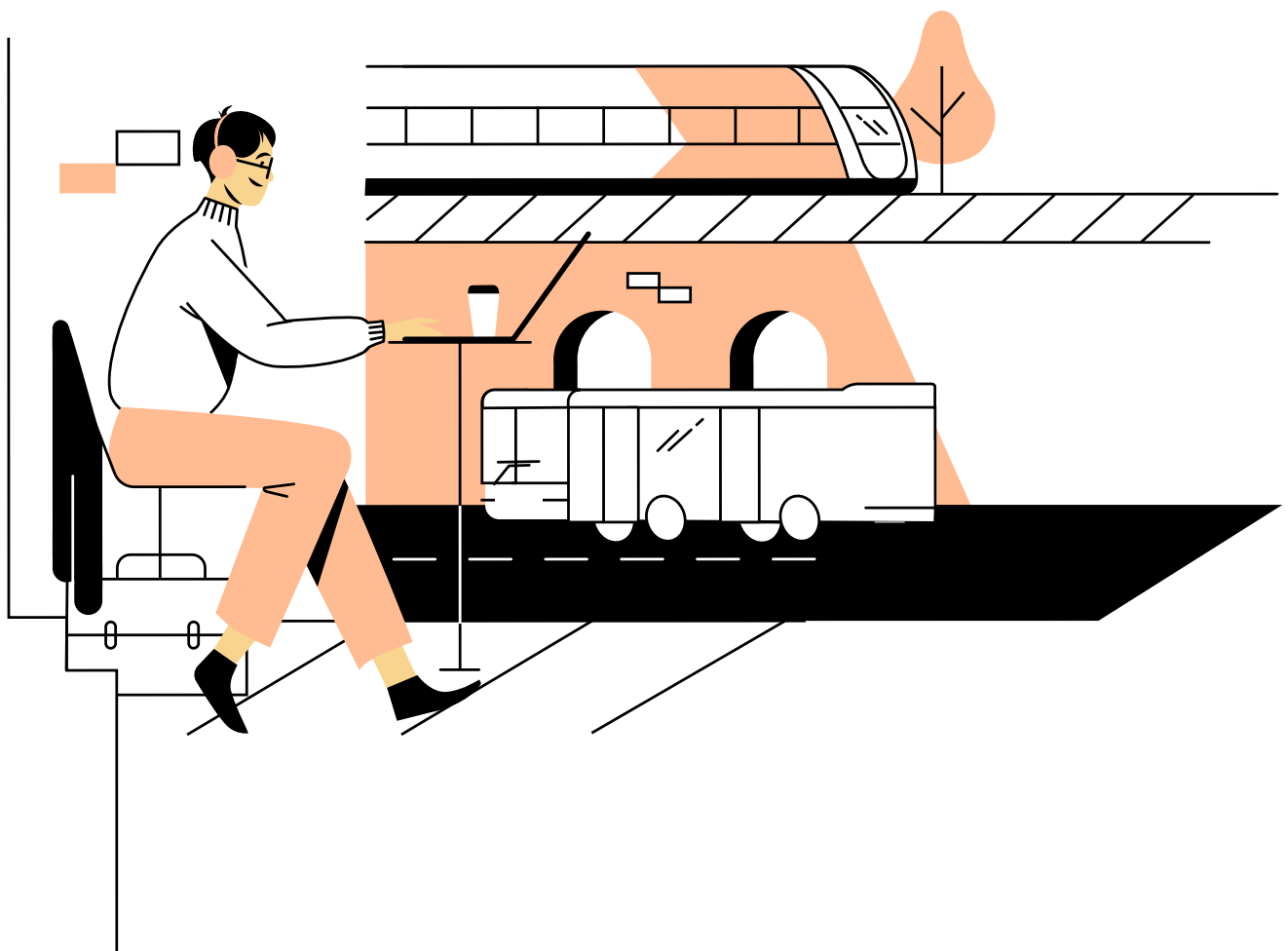
This phase of engagement was to acknowledge the role industry and local government play in driving actions for Victoria to become more liveable, affordable and sustainable.



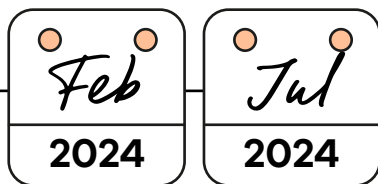
**ROUNDTABLES, WEBNARS
AND ONLINE WORKSHOPS**



**215
REPRESENTATIVES**



PHASE TWO



THE VICTORIAN COMMUNITY – UNDERSTANDING YOUR VISION FOR VICTORIA

In addition to the broader community engagement program, we also ran targeted outreach activities with people of different ages, abilities and backgrounds.

Community



58
POP-UP EVENTS



2900+
COMMENTS

Youth engagement



NINE
YOUTH EVENTS



200+
YOUNG PEOPLE
ENGAGED

CALD engagement



SEVEN
CALD WORKSHOPS



180+
CALD LEADERS AND
COMMUNITY MEMBERS



29+
MULTICULTURAL GROUPS

Online community survey



2500+
ONLINE SURVEYS
SUBMITTED

Online interactive map



3,000+ PINS
AND COMMENTS

TAFE and university



NINE POP-UP
EVENTS



600+
STUDENTS
ENGAGED

Experiencing disadvantage

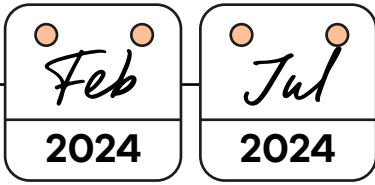


180+ PIECES
OF FEEDBACK



25 PARTICIPANTS
OVER THREE WORKSHOPS

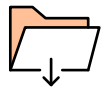
PHASE TWO



Discussion guides



400
PRINTED GUIDES
DISTRIBUTED



350
ONLINE GUIDES
DOWNLOADED

School engagement



20
WORKSHOPS



500+
SCHOOL KIDS
ENGAGED

Accessibility workshops

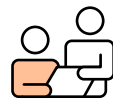


250+ PIECES
OF FEEDBACK
FROM



25 PARTICIPANTS
OVER THREE WORKSHOPS

Council and industry – housing targets and ideas testing



ONE-ON-ONE
MEETINGS
WITH COUNCILS



79
COUNCILS
TO DISCUSS DRAFT
HOUSING TARGETS



56
ATTENDEES
INDUSTRY
ENGAGEMENT EVENT

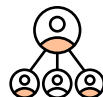
Traditional Owners & First Peoples community



DIRECTLY ENGAGING WITH
EIGHT REGISTERED
ABORIGINAL PARTIES
(RAPS) ACROSS VICTORIA

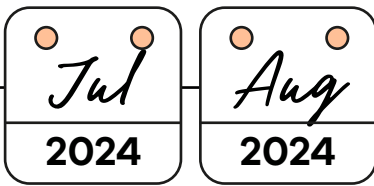


ENGAGING WITH
FIRST PEOPLES COMMUNITY
ORGANISATIONS

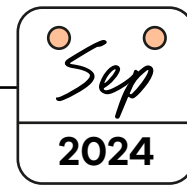


ENGAGING WITH THE
FIRST PEOPLES ASSEMBLY
OF VICTORIA

PHASE THREE



PHASE FOUR



WHAT YOU HAVE BEEN TELLING US. "THE BIG IDEAS"

We reviewed all that we have been hearing and identified common themes or Big Ideas that we started to test with the community.

Open house events

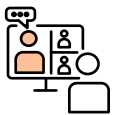


1600+
INTERACTIONS



NINE OPEN HOUSE
MELBOURNE EVENTS
ACROSS VICTORIA

Community webinars



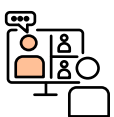
70 ATTENDEES
FROM COMMUNITY GROUPS
AND ORGANISATIONS
ACROSS VICTORIA

Big ideas survey



359 SURVEYS
SUBMITTED
FROM COMMUNITY, LOCAL
GOVERNMENT INDUSTRY
STAKEHOLDERS

Housing target webinars



TWO
LOCAL
COUNCIL
WEBINARS

ONE
INDUSTRY
WEBINAR

Submissions



246 SUBMISSIONS
FROM COMMUNITY, LOCAL
GOVERNMENT INDUSTRY
STAKEHOLDERS

SHAPE VICTORIA PEOPLE'S PANEL

The community engagement program ended with the Shape Victoria People's Panel. 49 randomly selected Victorians were brought together to participate in a deliberative engagement process, reviewing the extensive data collected throughout the full engagement, and developing a final vision statement to guide future planning in Victoria.

Deliberative engagement



49 VICTORIANS
RANDOMLY SELECTED
JOIN SHAPE VICTORIA
PEOPLE'S PANEL



5 SESSIONS
4 DAYS IN PERSON
1 ONLINE



11 EXPERT
SPEAKERS



1 OVERARCHING
VISION FOR VICTORIA 2050
AND 4 PILLAR NARRATIVES

HOW FEEDBACK SHAPED THE PLAN FOR VICTORIA

Between November 2023 and June 2024, Victorians shared with us their ideas and their vision for Victoria.

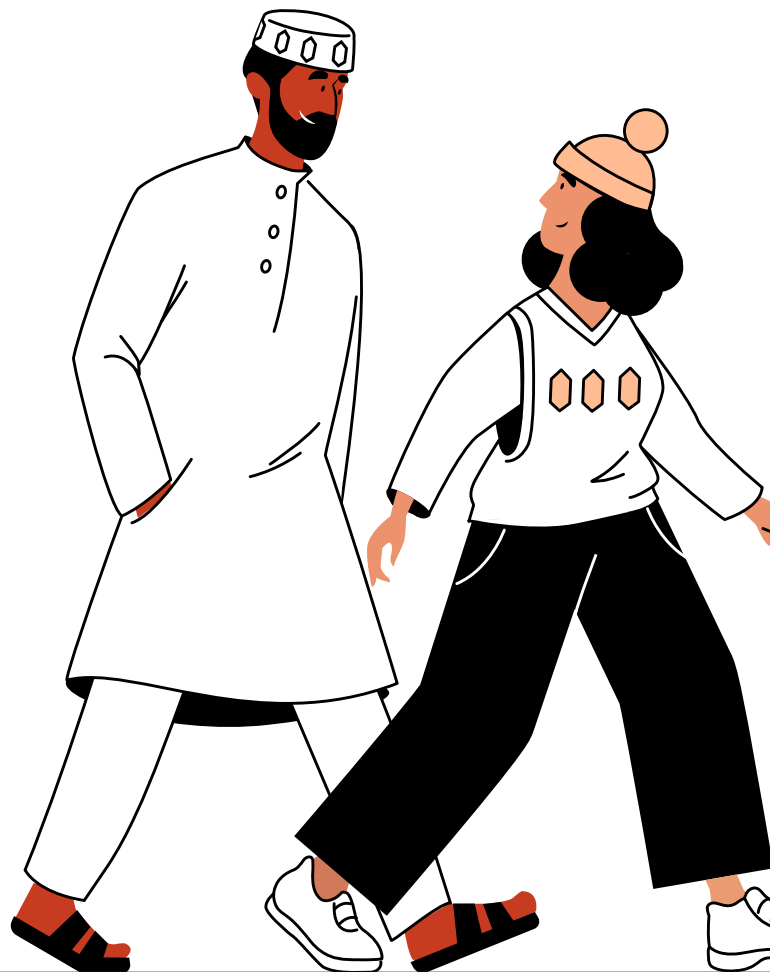
Our conversations were guided by four pillars:

- Affordable housing and choice
- Equity and jobs
- Thriving and liveable suburbs and towns
- Sustainable environments and climate action

From there, we were able to identify eight Big Ideas, which we tested further through July and August 2024. Throughout July and August, we also received detailed submissions from community, councils and industry.

Key actions have been developed in the plan for Victoria that directly respond to what we have heard. There are 21 actions in total. Each action is particularly relevant to a specific pillar. However, all the actions have a positive impact on all the pillars.

The summarised feedback across each of the pillars directly informs and aligns with the actions developed as part of the new plan for Victoria, creating a clear connection between community input and strategic priorities.



TOP PRIORITIES

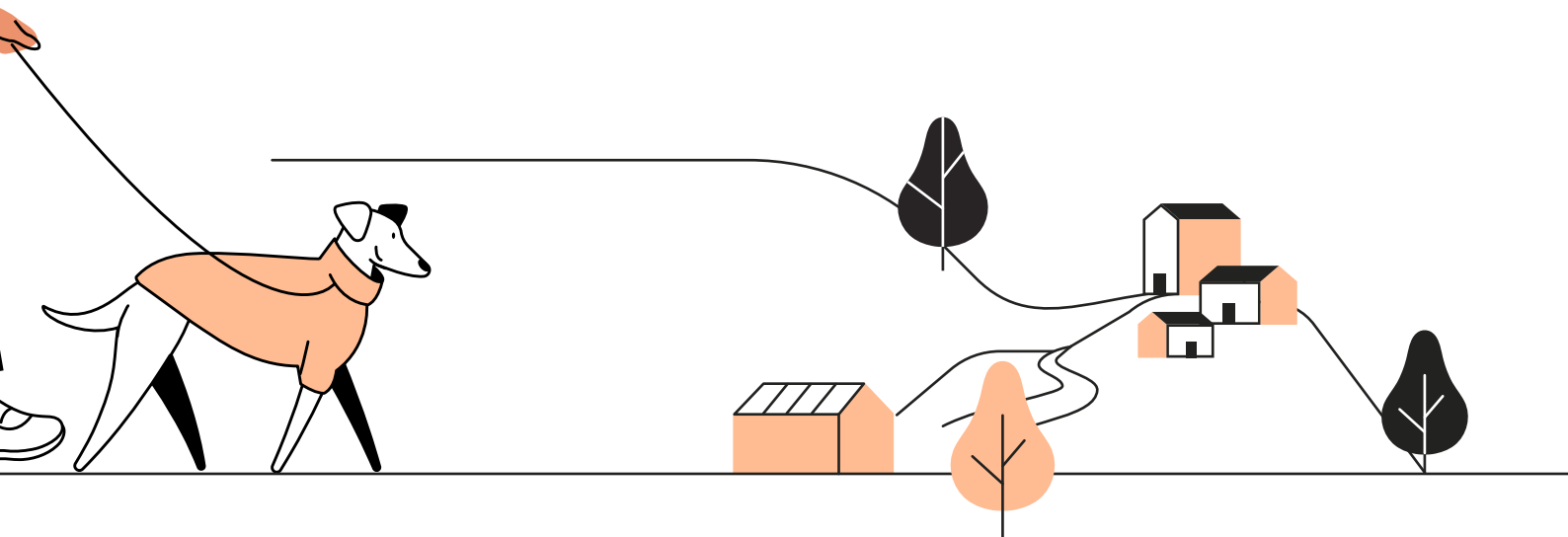
1. Better public transport, walking and cycling connectivity

2. More affordable homes and social housing

3. Leafy streets with trees, parks and public open space

4. Living more sustainability to protect the environment

5. Vibrant and social neighbourhoods for people to connect and thrive





AFFORDABLE HOUSING *and* CHOICE

WHAT WE HEARD

Victorians want affordable, diverse housing near public transport, schools, parks and essential services. They support more social and affordable housing, especially in areas of greater need, with a focus on ensuring there are different types of homes to meet the needs of all communities.

While there is support for the plan to show how areas will grow and change over time, it's important that local areas maintain their local values and character, heritage and environmental features that communities value.

Removing minimum parking standards in appropriate locations to enhance active transport infrastructure and public transport services was strongly supported by Victorians.

Victorians want to ensure the design and construction of new apartments is of a high quality as our cities grow. Well-designed and well-built housing leads to better amenity, liveability, health and well-being and sustainability outcomes.

The city is already overdeveloped. Regional is underdeveloped, so I think balancing this will increase satisfaction and accessibility for everyone

Non-binary online survey participant

"Central West has a pretty barren car park most of the time. With better and more frequent public transport links, land could be improved for more shops and place making to make Central West a real destination

Interactive map participant, Maribyrnong

I hope by 2050 there'll be more affordable housing for all people, especially those struggling with rent! I hope that I myself find an affordable place in the future

RMIT student, Melbourne



ACTIONS IN THE PLAN FOR VICTORIA

- Implement housing targets for every local government area.
- Carefully manage the outward growth of regional cities and towns.
- Increase the number of social and affordable homes.
- Match car and bike parking requirements and bike facilities with demand.
- Update the better apartments design standards.

THE PEOPLE'S PANEL VISION FOR HOUSING AFFORDABILITY AND CHOICE

Our housing will be consistently functional, inclusive, accessible, fair and sustainable. Victorians will live in diverse forms of housing that meet the needs of the public and contribute to our multi-faceted and vibrant community, providing accessible services, lively centres and open space.

We will increase medium-density housing and limit urban sprawl to preserve our natural landscapes and biodiversity. We will invest in a variety of sustainable modes of transport for all Victorians.

THRIVING and LIVEABLE SUBURBS AND TOWNS

Share your aspirations here

down your aspiration for thriving and liveable suburbs and towns on a post-it and stick it to this board.

Post-it notes:

- We need to tackle youth crime, it's the most important issue for Vic.
- There's not enough support for elderly folks in our area. We need help!
- I moved here when I could drive, now it takes me an hour to walk to the shops.
- I like the basketball stadium, going on the train and seeing my friends!
- We need parks, play grounds + green spaces.
- We need some shops closer to the local shopping home. The 7/11 is okay for basics but not everything.
- It's a nuisance trying to navigate public transport and crossing and getting over the freeway.
- We have to tackle the cost of living crisis - it's getting out of control.
- Carrum Downs has a great sense of community. I want to stay in my home here.
- Moving from Carrum Downs to live in my daughter's area, again love in Carrum.
- I like my school and going to ballet classes!
- I love that I have a milk bar and I get to eat lollies.
- \$ on S&P - No responsibility to want them on my street.
- Our area feels safe.
- Want to see more green spaces.
- Why are my houses being built and not built out?
- Love going to the local shopping centre. The shopping centre is a big problem for other kids.
- Frankston is a nice area, we're happy living there. No complaints!
- Five roads near the Carrum park are closed. The bus is really hard to get with my walker.

What kind of Victoria do we want in the future?

- We are resilient to and can manage the impacts of sea level rise, bushfire, flooding and other weather events.
- Our cities, towns, suburbs and regions are cooler, greener and more sustainable.

HELP US SHAPE THE FUTURE for VICTORIA

Scan the QR code to visit our Engage Victoria webpage





EQUITY *and* **JOBS**

WHAT WE HEARD

Enhancing public transport options, reducing road congestion and improving biking and walking paths were key priorities for improving how Victorians travel to work or study.

There is a need for more frequent and better-connected public transport services, especially in areas with limited access. There is also a call for investment in road networks, especially in rural areas where people are heavily reliant on private vehicles due to limited or no public transport options.

Ensuring land is available for industrial and commercial purposes is essential for increasing job opportunities where people live. Many Victorians supported mixed-use development, combining commercial, residential, employment and recreational land.

Fostering community connection through more local services and open spaces was a key priority for Victorians, with strong support for free and affordable community facilities, events and activities to encourage more social connections.

Whilst we acknowledge the importance of adaptability, it is essential that the community has consistency and certainty in the way in which development proceeds

Community submission

Access to high quality jobs in centralised areas near public transportation [is important]. Jobs near homes leads to job 'sprawl' which destroys the ability to provide effective transportation options other than cars

Male, online survey participant



ACTIONS IN THE PLAN FOR VICTORIA

- Improve transport network planning policy.
- Ensure new industrial and commercial land is ready for development.
- Streamline community infrastructure developer contributions.
- Coordinate infrastructure and service delivery to support more homes.

THE PEOPLE'S PANEL VISION FOR EQUITY AND JOBS

We envisage that, in 2050, we will be a well-connected society where everyone has equitable access to essential services, as well as fair and inclusive living/working standards.

There will be fair access to housing, jobs, education, infrastructure and services; commerce and the environment will be supported across the state. Victorians want a healthy work-life balance that produces well-being in safe working environments.

There will be an emphasis on rural cities and towns and the decentralisation of employment opportunities and essential services while facilitating the digital and physical infrastructure needed to support contemporary jobs in our regions. Victoria will encourage workspaces that are healthy and enjoyable and provide flexible working options (e.g. remote work and study). In addition, Victoria will provide sustainable and equitable work in metropolitan Melbourne, developing the already existing population hubs of the state.

We envisage a Victoria where people have more choices about where to live and work within a connected community. Efficient transport infrastructure will link Melbourne, regional cities and places of cultural and recreational importance.

Share your aspirations here

Write down your aspiration for equity and jobs on a post-it and stick it to this board.

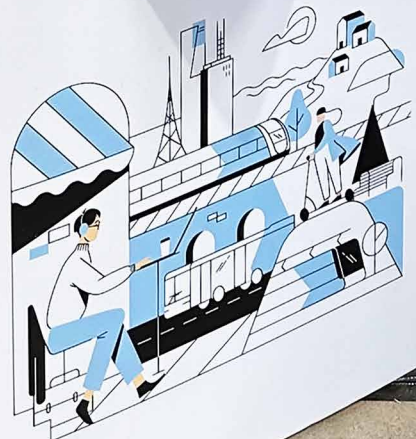
Share your aspirations here

Write down your aspiration for equity and jobs on a post-it and stick it to this board.

What kind of Victoria do we want in the future?

- Being able to get to work easily so that we can spend more time with family and friends.
- Access to jobs close to where people live.

EQUITY
and **JOBS**



THRIVING *and* LIVEABLE SUBURBS AND TOWNS

WHAT WE HEARD

Victorians want greener suburbs with more tree canopies, open spaces, parks and walking and bike paths, all contributing to healthier and more sustainable communities.

Preserving and enhancing open spaces is important for supporting growing communities, providing safe spaces for children and young people to enjoy and building stronger community connections.

Victorians told us good public spaces must be accessible, inclusive, safe and environmentally friendly. There were suggestions to implement certain design standards such as universal design*, environmentally sustainable design and gender inclusive design.

Improving public transport accessibility and offering more active transport options like connected bike paths and improved links to public transport hubs support a more sustainable and inclusive urban environment.

**Universal design refers to design principles that can be applied to all kinds of buildings to make them more accessible to people of all abilities.*

Safe, convenient and enjoyable walking routes, safe cycling routes and good, accessible public transport so that space can be used for people, not parking and traffic

Female online survey participant

In the 15 years I've been at Whitehorse, every single consultation has highlighted the need for open spaces, the value of trees and parkland's and this competes a bit with the housing overlay

Online accessibility workshop participant



ACTIONS IN THE PLAN FOR VICTORIA

- Protect and enhance our canopy trees.
- Introduce minimum standards and design guidance for open space where more homes will be built in existing areas.
- Make best use of land at train stations.
- Update design guidance to deliver better public places.
- Make it easier to walk and cycle.

THE PEOPLE'S PANEL VISION FOR THRIVING AND LIVEABLE SUBURBS AND TOWNS

We envisage equitable access to green spaces to improve the health and well-being of communities.

The community and governments will maintain safe public spaces for all, with an emphasis on usable and affordable recreational and green spaces. This will support cultural expression and community connection.

Healthy communities will have high-quality services and utilities and access to green spaces.



MISTER MINIT
SHOE REPAIRS
KEY CUTTING
ENGRAVING

House



HELP US SHAPE THE FUTURE FOR VICTORIA

HELP US SHAPE THE FUTURE FOR VICTORIA

Scan the QR code to visit our Engage Victoria webpage

HELP US SHAPE THE FUTURE FOR VICTORIA

Share your aspirations here

Write down your aspiration for housing on a post-it and stick it to this board.

We need your help to shape the future of housing in our state

- In choosing where to live, is affordability important? What else is important?
- How can we make it easier for Victorians to choose where they want to live? What is important to you when choosing the type of new home you'll live in?
- Where are the best places to build more homes?

Scan the QR code to visit our Engage Victoria webpage

We need your help to shape the future of jobs and equity in our state

- What do our cities, suburbs, towns or regions need to help you reduce the time spent travelling to work?
- What things do you want to be able to access close to home?
- What would make sure Victoria remains a good place to do business?

Scan the QR code to visit our Engage Victoria webpage

AFFORDABLE HOUSING and CHOICE

SUSTAINABLE ENVIRONMENTS *and* CLIMATE ACTION

WHAT WE HEARD

Ensuring a more environmentally sustainable future for Victoria is a key priority for Victorians, with a focus on sustainable housing and more sustainability features like solar panels, heat pumps, cooling systems, and clean, renewable energy.

While renewable energy is widely supported, there are concerns about how these facilities might affect the environment and agricultural productivity in rural areas.

With the increase of housing density, it was also highlighted that environmental hazards such as flood and bushfire risks must be taken into consideration.

Victorians, especially those in regional areas, want greater protection of land used for food production, as well as lakes, beaches, Country, and natural resources. Statewide mapping to identify and preserve key employment, agricultural, and environmental areas was also strongly supported.

Incorporating environmentally sustainable design into the Victorian Planning Principles could improve the design and environmental sustainability of all residential developments. This would need to be considered as part of a statewide approach.

The Grampians is a significant environmental hazard for flood and bushfire and development around Grampians boundaries needs to be carefully managed and housing in the regions should be directed to existing settlements in safer locations

Interactive map survey participant

DESIGNING AND MAINTAINING GREEN SPACES THAT ARE ACCESSIBLE TO ALL, INCLUDING SENSORY GARDENS OR WHEELCHAIR-ACCESSIBLE PATHS, CAN PROMOTE BOTH ENVIRONMENTAL SUSTAINABILITY AND SOCIAL INCLUSION

Online accessibility workshop participant.



ACTIONS IN THE PLAN FOR VICTORIA

- Improve the environmental sustainability of development.
- Better communicate and manage flood, bushfire and climate hazard risks.
- Protect our Birrarung (Yarra River).
- Protect and carefully use regional resources.

THE PEOPLE'S PANEL VISION FOR SUSTAINABLE ENVIRONMENTS AND CLIMATE ACTION

Victoria is a beautiful state rich in natural landscapes, resources and diverse communities.

We envisage equitable access to green spaces to improve the health and well-being of communities.

We actively seek out First Peoples' perspectives and address climate issues with urgency and innovation, ensuring environmental education and a sustainability-focused culture across all generations.

Share your aspirations here

Write down your aspiration for sustainable environments and climate change on a post-it and stick it to this board.

EV access

We need your help to shape a future state with equal access to jobs

- What do our cities, suburbs, towns or regions need to help you reduce the time spent travelling to work?
- What things do you want to be able to access close to home?
- What would make sure Victoria remains a good place to do business?

Scan the QR code to visit our Engage Victoria webpage



THRIVING and LIVEABLE SUBURBS AND TOWNS



AFFORDABLE HOUSING CHOICE

HELP US SHAPE THE FUTURE for VICTORIA

HELP US SHAPE THE FUTURE for VICTORIA

HELP US SHAPE THE FUTURE for VICTORIA

HELP US SHAPE THE FUTURE for VICTORIA

SELF DETERMINATION *and* CARING FOR COUNTRY



TRADITIONAL OWNERS AND FIRST PEOPLES

ENGAGING WITH TRADITIONAL OWNERS

Traditional Owners have intrinsic rights and cultural obligations to protect, speak and make decisions for their Country and Community.

Currently, there are formally recognised Traditional Owners – Registered Aboriginal Parties or RAPs – for 77.5 per cent of Victoria.

A new plan for Victoria has a dedicated Traditional Owner engagement approach to reflect Traditional Owners' rights and obligations as the original custodians of Countries in Victoria.

Traditional Owners

Refers to the original custodians of Victoria who share a deep cultural, spiritual, and social connection with Country. They have unique rights and responsibilities in Caring for Country. Each Traditional Owner Group has their own unique culture, history, language, customs and laws.

Registered Aboriginal Parties (RAPs)

Refers to Traditional Owner groups that are legally recognised under the **Aboriginal Heritage Act**, with responsibilities for managing and protecting Aboriginal Cultural Heritage on Country. Registered Aboriginal Parties are recognised as the primary guardians, keepers and knowledge holders of Aboriginal Cultural Heritage, including culturally significant places or objects.



OUR APPROACH SO FAR

We've been engaging with Traditional Owners since late 2023. Our engagement approach is built on the principles of self-determination and free, prior and informed consent, which reflects Traditional Owners' human rights as outlined in the *United Nations Declaration on the Rights of Indigenous Peoples*.

RAPs we have met with so far:

- Barengi Gadjin Land Council Aboriginal Corporation RNTBC – met on Country
- Bunorong Land Council Aboriginal Corporation – met on Country
- Dja Dja Wurrung Clans Aboriginal Corporation – met on Country
- First Peoples of the Millewa Mallee Aboriginal Corporation – met on Country
- Gunaikurnai Land and Waters Aboriginal Corporation – met online
- Gunditj Mirring Traditional Owners Aboriginal Corporation – met online
- Taungurung Land and Waters Council Aboriginal Corporation – met online
- Wadawurrung Traditional Owners Aboriginal Corporation – met online
- Wamba Wamba Aboriginal Corporation – were appointed as a Registered Aboriginal Party in August 2024, we're initially engaging Wamba Wamba through the First Peoples Assembly of Victoria (until they advise they're interested in directly engaging with DTP on the new plan).

All RAPs are individually placed to speak for their Communities and Countries, and have discrete interests, goals, and priorities. We are listening to RAPs about what they need to be empowered as equal partners in engagement throughout 2025.

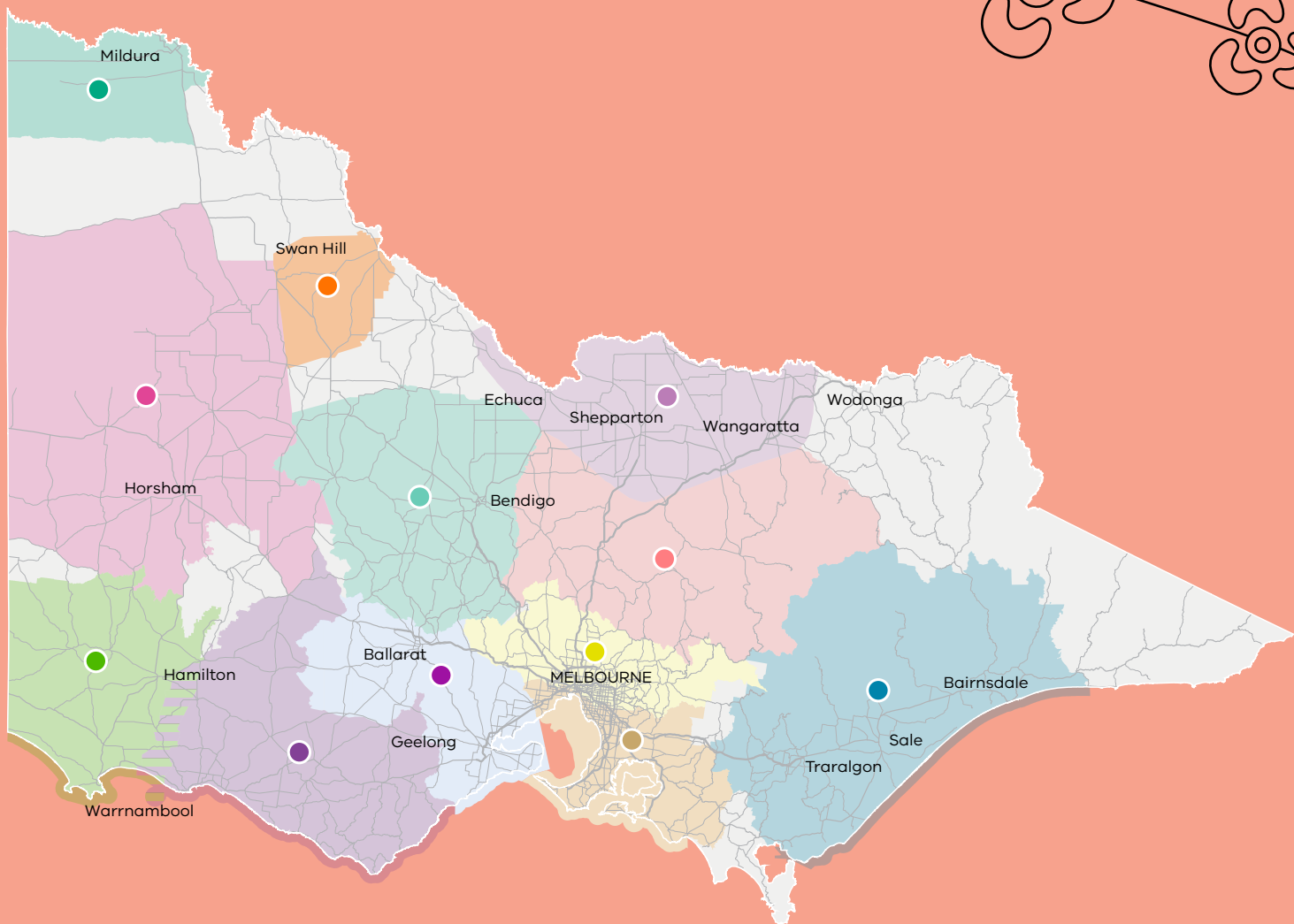
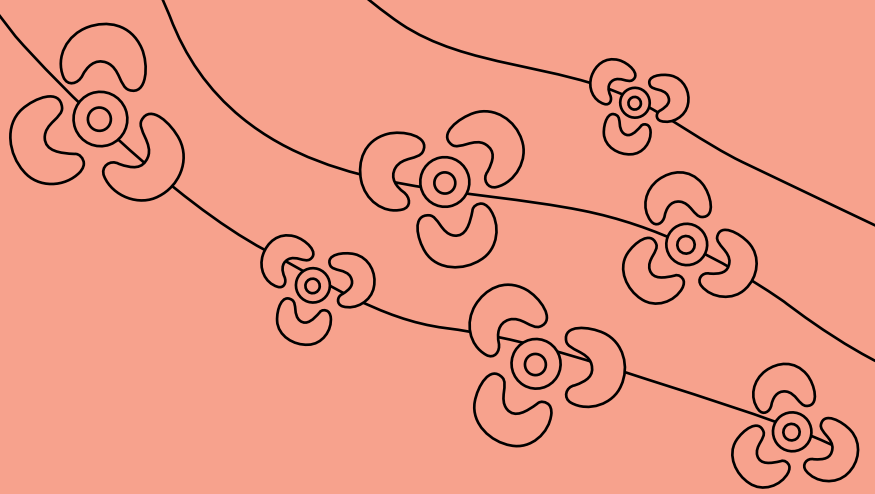
WHAT WE HAVE HEARD

RAPs are very keen to work with government on a plan for Victoria. At this time, there are many competing priorities for RAPs, these include the historic Yoorrook Justice Commission, the first formal truth-telling process into historical injustices experienced by First Peoples in Victoria.

The RAPs provided valuable advice on how we can ensure the success of ongoing engagement, including clarity about the opportunities for future change and information on how their input and feedback will influence outcomes.

Building relationships with the RAPs and ensuring they are equal partners in the decision-making process requires good, clear communication about planning systems and land use planning.

Traditional Owners have their own governance structures and decision-making processes. The ways in which we engage with Traditional Owners need to allow time for those processes to take place. Meaningful engagement takes time and is also a demonstration of respect for established governance structures within the RAPs, for the knowledge Traditional Owners have to offer and for the value of working in genuine partnership.



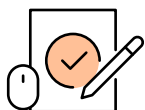
- Barengi Gadjin
- Bunurong
- Dja Dja Wurrung
- Eastern Maar

- Gunaikurnai
- Gunditj Mirring
- Milewa-Mallee
- Taungurung

- Wadawurrung
- Wamba Wemba
- Wurundjeri Woi Wurrung
- Yorta Yorta

FIRST PEOPLES' CONTRIBUTION TO THE COMMUNITY SURVEY

A survey on Engage Victoria was open to all Victorians between 22 February and 31 August 2024.



2500 Completed the survey



55 Identified as Aboriginal and/or Torres Strait Islander

→ While affordability was the top overall factor when choosing a place to live, being close to family and friends was the second most important factor for First Peoples.

→ Nearly 60 per cent of participants in this group use a car as their main mode of transport and when asked what would make it easier to get to work, the most popular response was better road networks.

→ When planning for new buildings, the top priorities for First Peoples were cost of living, access to sunlight, and trees and landscaping.

→ Protecting existing bush, forests and river systems, more trees in urban areas and better-connected public transport were the most important things when it comes to making environmentally sustainable cities, suburbs, towns and regions.



DEAR 2024,

Traditional Owners have been owning land & building houses for 26 years now?!

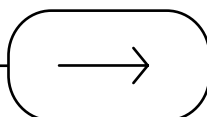
The Community in Portland is striving with all the Job opportunities the Shopping Centres have produced!

Can you believe you can catch the train from Portland to Melbourne AND dispose of green waste in the bin!

You'll be happy to know the history of Portland is shown throughout the community! This includes the Aboriginal history.

Your children will be excited to know there is WAY MORE things for the youth to do! Portland has a bowling Alley, Cinema, & a zoo! Can't wait for you to see this! From 2050





ENGAGING WITH FIRST PEOPLES

Wider First Peoples Community Engagement

Self determination means that First Peoples have the right to make decisions about matters that affect them and their Communities. This is a human right outlined in the *United Nations Declaration on the Rights of Indigenous Peoples*.

When the First Peoples Community exercise their right to self determination, outcomes improve for First Peoples across Victoria.

First Peoples Community

Refers to the wider Aboriginal and Torres Strait Islander Community, including Traditional Owners. The First Peoples Community's voice can be conveyed individually or through many First Peoples organisations and peak bodies. i.e. Aboriginal Community Controlled Organisations (ACCOs), Local Aboriginal Networks (LANs) and Gathering Places.

First Peoples

Refers to all people of Australian Aboriginal and Torres Strait Islander descent, living in or visiting Victoria.

OUR APPROACH SO FAR

Since early 2024 we have been engaging with peak bodies and organisations within the wider First Peoples Community to raise awareness of the new plan and associated engagement opportunities.

This includes ongoing engagement currently underway with:

- five First Peoples community organisations
- representatives of the First Peoples' Assembly of Victoria.

Our tailored engagement approach employs community outreach to raise awareness and participation on a dedicated First Peoples Engage Victoria website. An online survey is currently open for feedback from the wider First Peoples Community,

The survey will close in early November 2024 and is only open to feedback from First Peoples and the wider First Peoples Community.

First People's youth engagement on Multnomah land

As part of our youth engagement program, one youth ambassador held a creative workshop on their home Country, Multnomah (Portland).

All 10 participants identified as First Peoples. The workshop highlighted the importance of inter-generational connection, to help share experiences and learnings between different age groups.

- Participants wanted more local empowerment, giving Traditional Owners more power over the future.
- Participants suggested having more creative spaces to explore ideas and interests, to reduce unsocial behaviour of young people in the community.
- There were requests for more fulfilling education opportunities as well as more job opportunities within the local community.
- First Peoples-led environmental practices and reconciliation was suggested, as well as more land care programs for Country.

I imagine Victoria to be a place where nature, culture and community are at the forefront. Traditional Owners will remain experts on how to care for Country. We will live in an action-oriented state. There will be peace between our community. It will be clean, sustainable and affordable

Youth Ambassador,
youth engagement
on Multnomah land

I believe that everyone who resides in Victoria deserves to live in affordable housing, balanced in all areas of Victoria. Homes should be spread out in different areas, giving us choice in where we want to live...

Online survey
First Peoples participant

A LIVING PLAN AND CONTINUOUS ENGAGEMENT

The plan for Victoria is a living plan, which ensures that it is genuinely responsive to the changing nature of the community. "Meaningful engagement takes time" is one of the key pieces of feedback we received from Traditional Owners to allow for established governance and decision-making processes.

A dynamic, living plan can support meaningful engagement with Traditional Owners and First Peoples. It also means the plan can develop and evolve with truth-telling and Treaty processes.

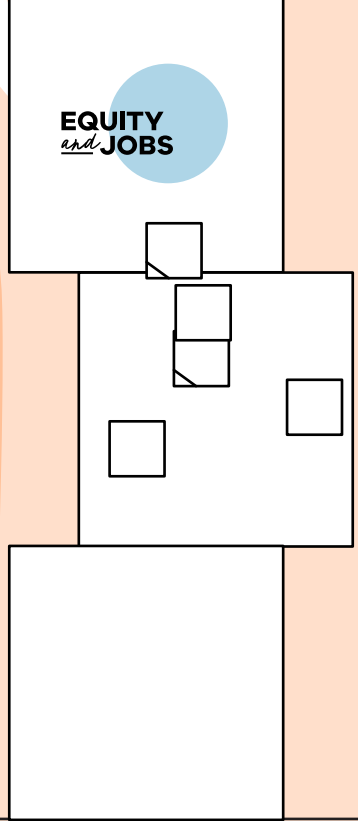
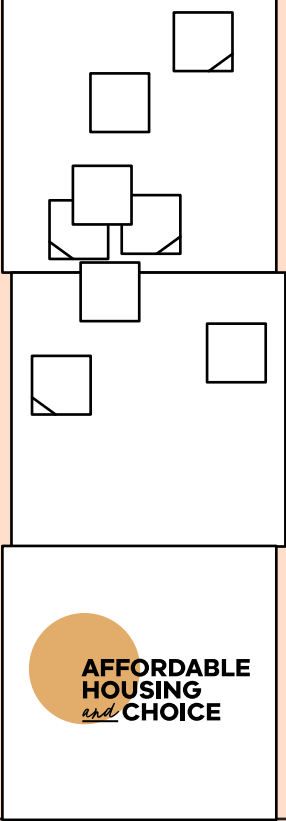
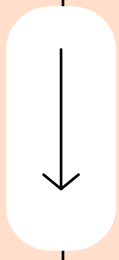
We will continue to be led by Traditional Owners to further develop the plan over time and deliver better outcomes for First Peoples.

Actions from the plan:

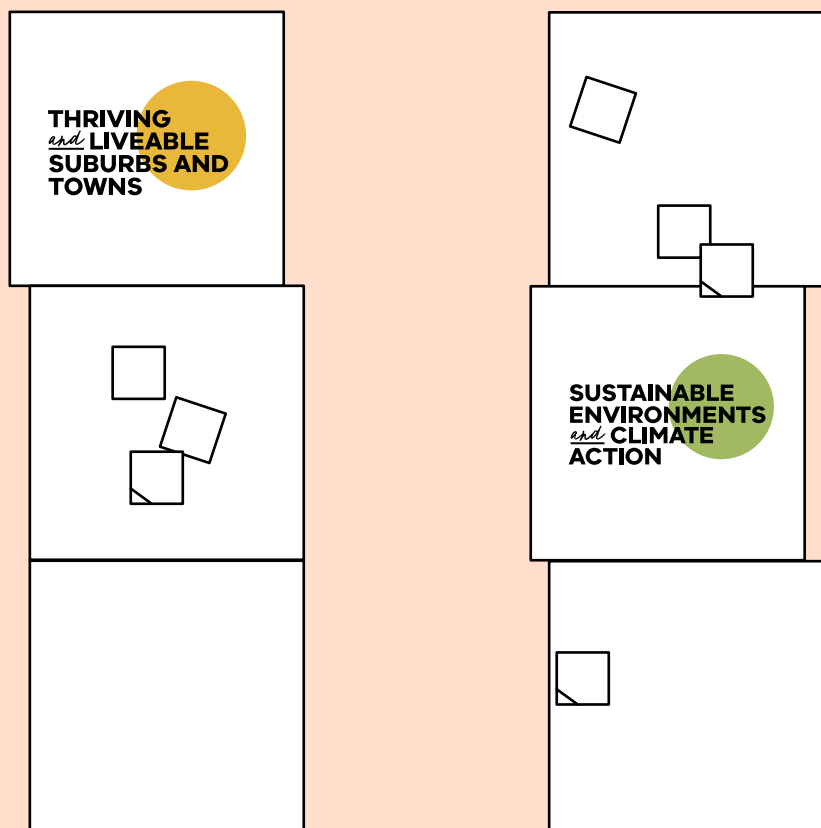
- Make the planning system fairer for First Peoples.
- Embed Traditional Owner knowledge in the built environment, and introduce more Traditional Owner place names, where supported by Traditional Owners.
- Reflect Country in planning schemes where supported by, and following ongoing engagement with Traditional Owners.

Our commitment to partner with Traditional Owners across Victoria in delivering and reviewing plan for Victoria. This includes:

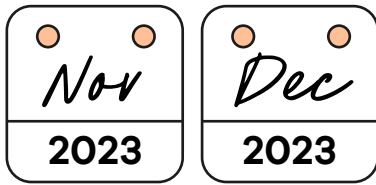
- recognising, prioritising and using in the plan the unique knowledge and wisdom Traditional Owners hold, including the rights to care and speak for Country
- establishing a renewed relationship so Traditional Owners can share in the plan's benefits
- empower Traditional Owners to identify evolving aspirations and determine relationships with the Victorian planning system
- embedding governance principles, policies and processes to ensure the collective support and decision-making of Traditional Owners ensuring the plan restores and strengthens the rights of Traditional Owners and doesn't diminish the rights already secured under *Aboriginal Heritage Act 2006 (Vic)*, *Traditional Owner Settlement Act 2010 (Vic)*, or *Native Title Act 1997 (Cth)*.



ENGAGEMENT OVERVIEW INSIGHTS



PHASE ONE



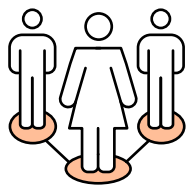
CONNECTED
NEIGHBOURHOODS
THAT FOSTER A SENSE
OF COMMUNITY

*Regional cities
council participant.*

LOCAL GOVERNMENT AND INDUSTRY ENGAGEMENT – ROUNDTABLES AND ONLINE WORKSHOP

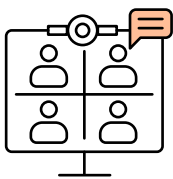
The first phase of engagement with industry and local government representatives started in late 2023 and included a series of roundtables, a webinar and an online workshop.

This phase of engagement was to acknowledge the role industry and local government play in driving actions for Victoria to become more liveable, affordable and sustainable.



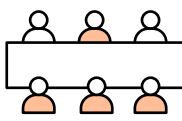
215 *from* **PARTICIPANTS**
INDUSTRY AND
LOCAL GOVERNMENT

81



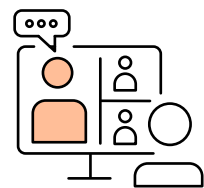
LOCAL GOVERNMENT
REPRESENTATIVES
attended
**AN ONLINE
WEBINAR**

6



ROUNDTABLE
MEETINGS
120
LOCAL
GOVERNMENT
AND INDUSTRY

14



REPRESENTATIVES
attended
**AN ONLINE
WORKSHOP**

KEY INSIGHTS

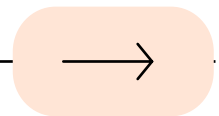
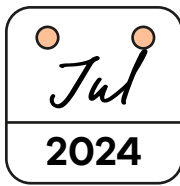
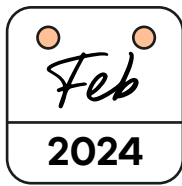
- More diversity in housing types and density is needed to meet changing community needs.
- More social housing is needed that is modern, affordable and close to services.

- There is a need for more diverse employment opportunities that will bring jobs closer to home.
- More investments in innovation are needed to ensure Victoria is a global employment destination.

- Well-connected communities would bring about a stronger sense of belonging.
- Improved wellbeing can be achieved through open spaces, housing, jobs and education available locally.

- More controls are needed to protect more open spaces and improve tree canopy coverage.
- Victoria must lead in Environmentally Sustainable Design (ESD) with more robust controls and standards in housing and infrastructure.

PHASE TWO



COMMUNITY ENGAGEMENT – YOUR VISION FOR VICTORIA

Our approach

Between February and August 2024, we set out on a comprehensive, state-wide program of engagement. We engaged with over 110,000 Victorians online and through in-person events. Our conversations were guided by four pillars. In addition to the broader community engagement program, we also ran targeted outreach activities with people of different ages, abilities and backgrounds.

**AFFORDABLE
HOUSING
and CHOICE**

Pillar 2:

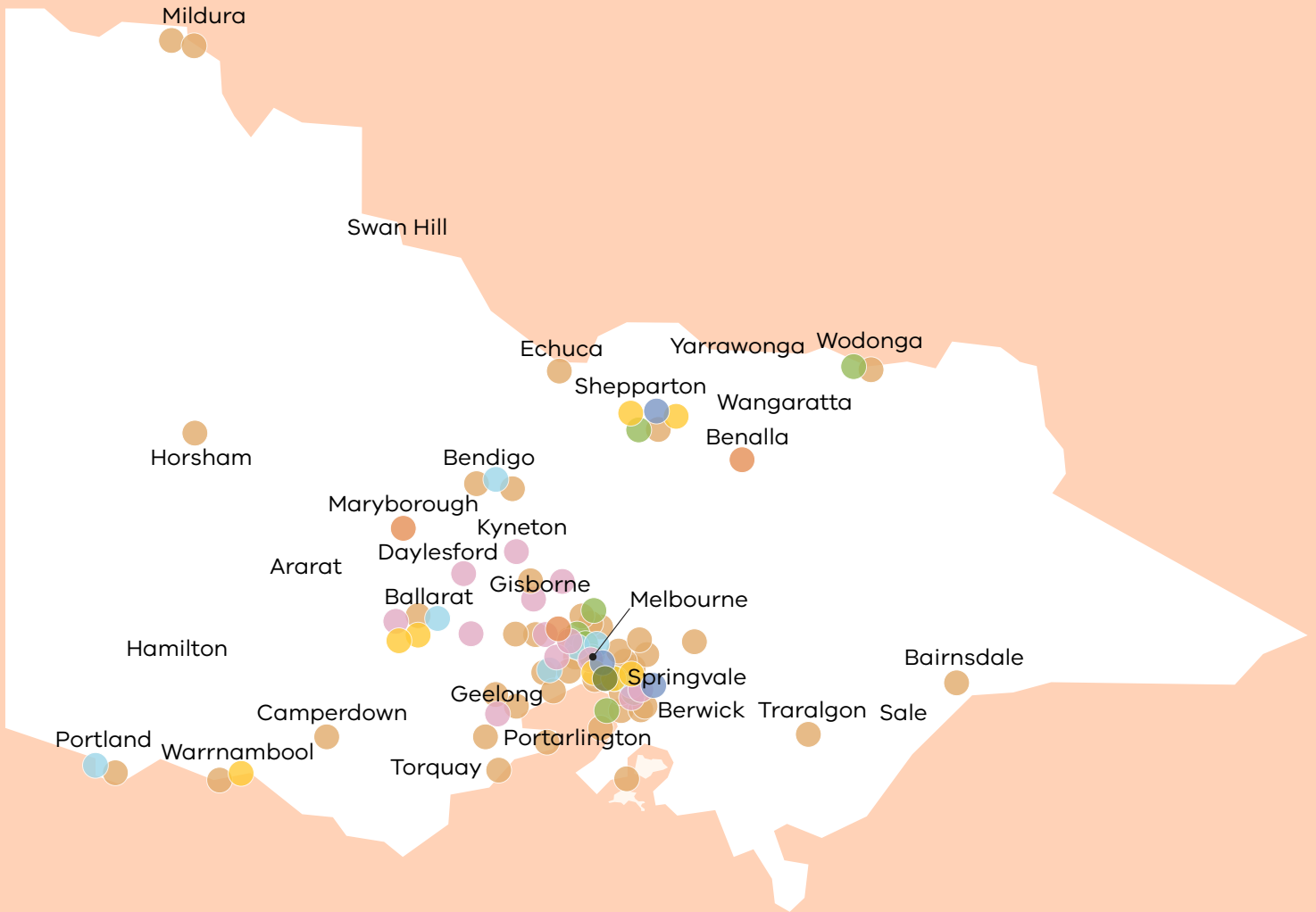
**EQUITY
and JOBS**

Pillar 3:

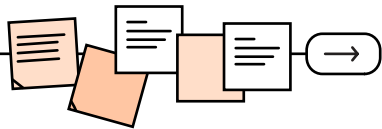
**THRIVING
and LIVEABLE
SUBURBS AND
TOWNS**

Pillar 4:

**SUSTAINABLE
ENVIRONMENTS
and CLIMATE
ACTION**



- 58 Community pop-ups
- 10 Open House events
- 9 Youth events
- 7 CALD workshops
- 9 University & TAFE pop-ups
- 3 VCOSS workshops
- 20 School workshops
- 3 Accessibility workshops



TOTAL OF **2,929** COMMENTS

**AFFORDABLE
HOUSING**
and **CHOICE**

669
COMMENTS

EQUITY
and **JOBS**

544
COMMENTS

THRIVING
and **LIVEABLE**
**SUBURBS AND
TOWNS**

1,237
COMMENTS

SUSTAINABLE
and **ENVIRONMENTS**
and **CLIMATE
ACTION**

479
COMMENTS

COMMUNITY ENGAGEMENT POP-UP EVENTS

We held 58 community pop-up events, including 24 events in regional Victoria, to give as many people as possible a chance to share their priorities, concerns and hopes for the future. Events included pop-ups at shopping centres, farmers markets and festivals.

Key insights from community engagement pop-up events

- Affordable and social housing was the top priority for people across Victoria with many highlighting the cost-of-living crisis
- People want homes that are close to public transport, shops, parks, and community spaces, as well as employment opportunities

- Accessible public transport was highlighted along with more services and better connectivity
- People wanted greater community connection and more local, community services and open spaces
- Victorians highlighted the need for more trees and green spaces, along with greater protection of the natural environment
- More sustainable housing and the need for clean renewable energy was a key priority for ensuring a more environmentally sustainable future for Victoria.



54 COMMUNITY POP-UP EVENTS   **IN TOWNS AND REGIONAL CITIES ACROSS *Victoria***





ENGAGING VICTORIANS WHERE
they LIVE, WORK AND GATHER

We need the right kinds of accommodation in the right kinds of places

Portarlington
pop-up participant

Carrum Downs has a great sense of community. I'm slowly getting older but hope that I can stay here in my own home

Carrum Downs
pop-up participant



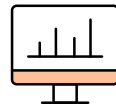
ONLINE ENGAGEMENT

We created a dedicated page on Engage Victoria to keep the community informed about our project and its objectives.

This page included:

- An online survey, also available in 11 other languages, where we asked people about their priorities for where they live and their aspirations for the future of Victoria.
- An interactive map, where people could pin their feedback to specific locations across the state.
- An ideas page where people could share thoughts and images about their vision for the future.
- An events page to show where our pop-up events were being held.

Key insights from online surveys



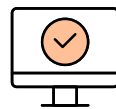
170,000+ page views



3,000+ comments on our interactive map of Victoria



85,000+ visitors on our Engage Victoria community page



2,500+ completed online surveys



239 ideas share

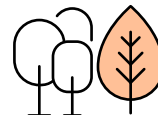
Top priorities when choosing a place to live



1. Affordability



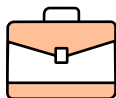
2. Access to public transport



3. Access to green spaces



4. Attractiveness of the area



5. Access to employment



6. Being close to family and friends

Affordable housing is absolutely the most important thing for the future. If you can't afford a place to live, how can you think about anything else?

Online survey



AFFORDABLE HOUSING AND CHOICE

Affordable housing was the third most important priority across all survey participants after greener suburbs and active transport.

Top 5 priorities for survey participants when choosing a place to live:



Affordability



Access to public transport



Access to green spaces



Attractiveness of the area



Access to employment

2,236 out of 2,461 survey respondents told us about their living situation:



940 of the survey respondents own a home with a mortgage



276 of the survey respondents live with family and/or friends



175 of the survey respondents rent with family and/or friends



6 of the survey respondents are homeless or rough sleeping



12 of the survey respondents are living in student accommodation



397 of the survey respondents own a home outright



374 of the survey respondents are renting alone or with a partner



14 of the survey respondents are living in community or social housing



3 of the survey respondents are living in worker accommodation



Which Big Idea is the most important to you?

AFFORDABLE HOUSING CHOICE

EQUITY AND JOBS

LIVABLE SUBURBS AND TOWNS

More homes in locations with great public transport access

More housing options for all Victorians including social & affordable homes

More jobs and opportunities closer to where you live

More options for how we move from place to place

More transport and services in key places all change our lives

More trees and urban greenery in our parks and community spaces

More protection for our natural and cultural heritage

More protection of our agricultural land

BIG IDEAS FOR VICTORIA'S FUTURE



Tell us what you think about these Big Ideas on Engage Victoria.

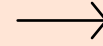




ENGAGING VICTORIANS WHERE
they **LIVE, WORK AND GATHER**

Would be good to have houses walking distance to shopping centres, indoor swimming pools and parks and gyms that are big enough for everybody – people with disabilities find it hard to travel in taxis.

Online survey



EQUITY AND JOBS

While travel by car is the most popular mode of transport, the top 3 priorities for making it easier to travel to and from work or study are:



Better public transport options



Less congestion on roads



Better bike and walking paths

Creating vibrant mixed-use areas where businesses can thrive was the top choice to ensure Victoria remains a good place to do business.

THRIVING AND LIVEABLE SUBURBS AND TOWNS

Top 5 priorities for making a great suburb:



A mix of **local shops** or supermarkets to **meet** your **daily needs**



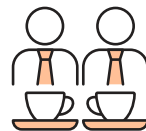
Parks, open space, sporting fields, **gardens** and **playgrounds**



Access to **cafés**, cultural and **arts events**



Safety and **inclusivity**



Community facilities such as libraries, meeting spaces and hubs

Sustainability features, such as solar panels, double glazing and renewable energy sources, were the top consideration for planning new buildings in suburbs.

Environment must
be put first for
everything else to
be in balance

Wodonga Plaza
pop-up participant



SUSTAINABLE ENVIRONMENTS AND CLIMATE ACTION

Top 5 priorities for making more
environmentally sustainable cities,
suburbs towns or regions:



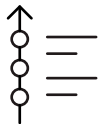
Better connected
public transport



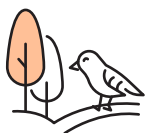
Protecting existing bush,
forest and river systems



More trees in urban areas



More public transport options



Protecting green space

Better connected public transport
was a top priority for many Victorians
wanting to reduce their reliance on
cars and environmental impact.



**AFFORDABLE
HOUSING
and CHOICE**

More homes in locations with great public transport access

We will need 224 million more homes by 2051 – 18 million in metropolitan Melbourne and 425,600 across regional Victoria. Making sure that new homes are built across the state and are well-located will allow us to maximise use of existing infrastructure and transport. When a new plan for Victoria is finalised, housing targets will show where new homes will be built across Victoria.

Scan the QR code to visit Engage Victoria and tell us what you think of this Big Idea.



What do you think we should do to prioritise homes close to public transport, services and shops?

Where would you like to see more homes in your local area?

No domestic violence particularly towards female gender makes a great suburb to me

Youth workshop participant, Dandenong

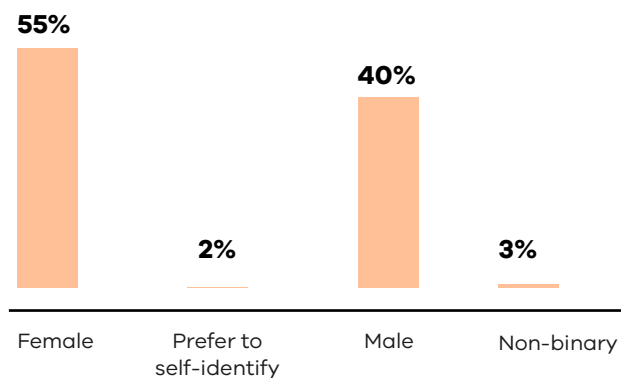


APPLYING A GENDER LENS

We recognise that where we live, work, learn and socialise can be experienced differently depending on gender. Applying a gender lens on our feedback helps to address gender inequalities, promote fairness and ensure the future is one that is accessible and responsive to the diverse needs of all Victorians.

Gender of survey participants

2,156 SURVEY RESPONDENTS SPECIFIED THEIR GENDER



Key insights from pop-up events

- The need for safety was identified as a key concern for women, as well as improved access to safe and affordable housing, better street lighting and emergency housing for women and children.
- Equality in the workplace for women and men was highlighted, as well as equal pay.
- More education and more enforcement around safety for women and LGBTIQ+ people.
- The need for more LGBTIQ+ services and support in the community was also raised by this cohort.

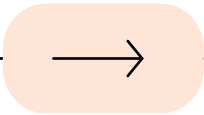
ONLINE SURVEY INSIGHTS

- More diversity in housing types and density is needed to meet changing community needs.
- More social housing is needed that is modern, affordable and close to services.

- There is a need for more diverse employment opportunities that will bring jobs closer to home.
- More investments in innovation are needed to ensure Victoria is a global employment destination.

- Well-connected communities would bring about a stronger sense of belonging.
- Improved wellbeing can be achieved through open spaces, housing, jobs and education available locally.

- More controls are needed to protect more open spaces and improve tree canopy coverage.
- Victoria must lead in Environmentally Sustainable Design (ESD) with more robust controls and standards in housing and infrastructure.



FOR SINGLE WOMEN, IT'S REALLY HARD TO FIND AFFORDABLE RENTAL PROPERTY. IT'S HARD ENOUGH WITH DUAL INCOME AND TWICE AS HARD ON YOUR OWN

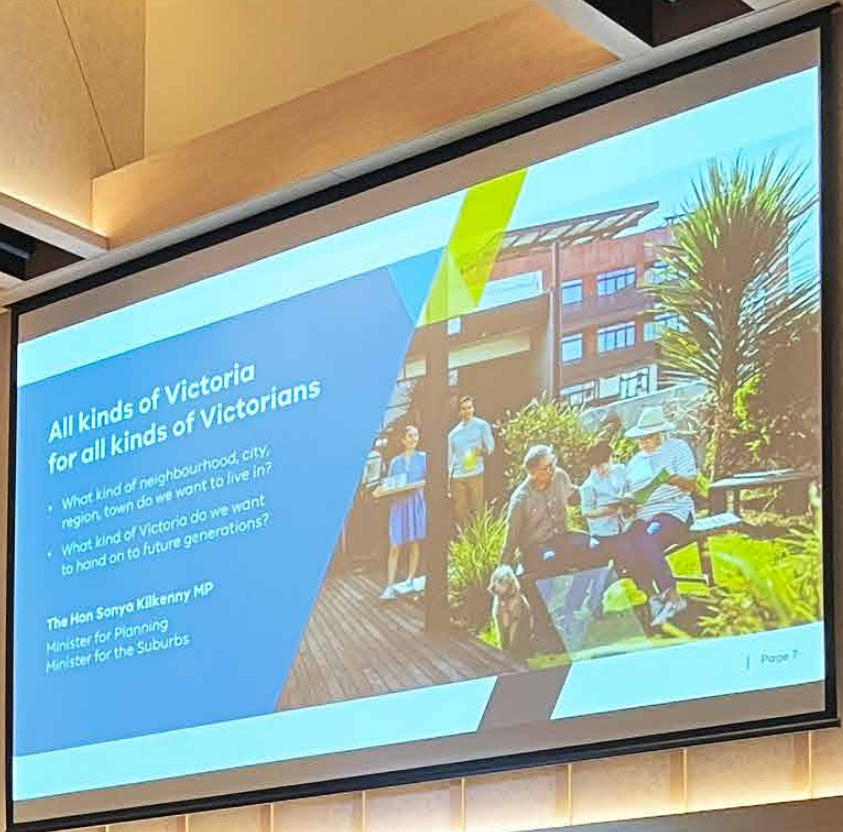
Regional Chisholm Institute participant, Berwick cities council participant.

A MINISTERIAL ROUNDTABLE ON GENDER

In August 2024, The Hon. Minister Sonya Kilkeny held a roundtable discussion with Industry peak bodies discussing views and ideas to ensure the plan is gender inclusive.

Key insights

- The need to develop design guidelines that provide practical examples of supporting the safety and dignity of women and girls in the built environment.
- The need to establish an overarching key principle of gender inclusive design.
- Safety and security, justice and equity, health and wellbeing, enrichment and fulfilment should be considered when it comes to designing cities that work for women.
- Women are more than 50 per cent of the community and should receive 50 per cent of funding and more equitable spends.



All kinds of Victoria for all kinds of Victorians

- What kind of neighbourhood, city, region, town do we want to live in?
- What kind of Victoria do we want to hand on to future generations?

The Hon Sonya Kilkenny MP
Minister for Planning
Minister for the Suburbs

Page 7



Introduce and connect the elderly and the youth so that no-one is alone and isolated. Keeping the stories of yesteryear alive so nothing is forgotten

*VCOSS participant,
Maryborough Community
House*

If you make something suitable for older people, it will most likely be accessible as well

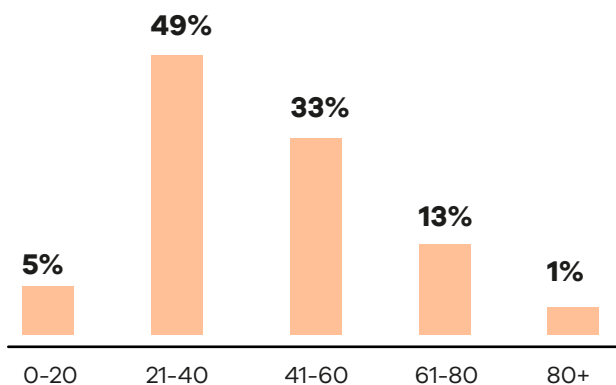
*Participant of online
accessibility workshop*



INSIGHTS FROM OLDER VICTORIANS

Age of survey respondents

2,172 SURVEY RESPONDENTS SPECIFIED THEIR AGE



Key insights from pop-up events

- More accessible housing options are needed with infrastructure designed for older people as well as people with disabilities.
- Suggestions were made for a community electric bus for older people to get to banks or medical appointments.
- More accessible car parks are needed for older people as well as people with disabilities.
- We need more ways to connect for younger and older people. Social connection was raised as important for mental health.
- We need more inclusion, local support and services for older people.

ONLINE SURVEY INSIGHTS

- Of the 85 survey participants who were 70 and over, 97 per cent lived in either a single detached home or in a unit/townhouse. Only 11 per cent indicated they would consider apartment living.
- Affordability was most important when choosing a place to live for participants under 70 years old,, whereas access to hospitals and other health facilities was the top priority for those 70 years and older.

- Participants 70 years and older were more likely to choose less congestion on roads to make it easier to get to work, while most participants under 70 preferred better public transport options.

- Trees and landscaping was the most important factor for planning new buildings in their suburbs for participants 70 and older, compared to those under 70, who considered sustainability features the most important.

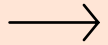
- Participants under 70 years said that having access to good public transport was their top priority for creating a more sustainable environment. Those 70 and older said that effective recycling programs were most important.

PROTECTING AGRICULTURAL LAND IS IMPORTANT BUT WHAT ABOUT PROTECTING LAND FROM AGRICULTURE? THAT'S ALSO IMPORTANT

Women at Pop-up activity in Portarlington

Mildura population has increased by about 8% in the past 5 years but we need increase in services to match

Sunraysia Farmers Market pop-up participant



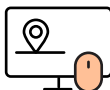
REGIONAL AND RURAL PERSPECTIVE



45 engagement events in regional cities and towns across Victoria



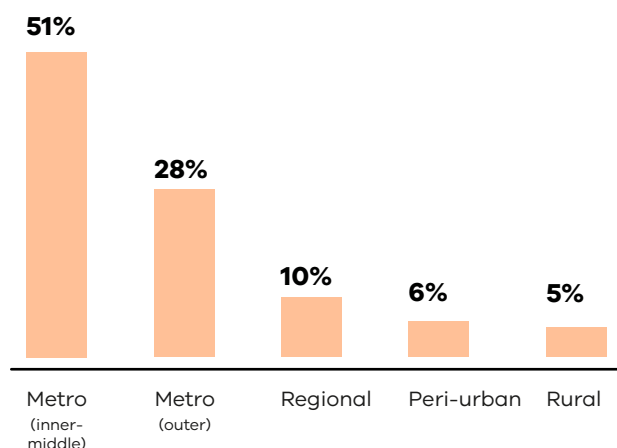
Over 2300 comments came from community events



687 comments were made on our online interactive map

Region where survey respondents live

2,105 SURVEY RESPONDENTS SPECIFIED THE REGION IN WHICH THEY LIVE



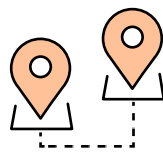
Key insights from pop-up events

- Public transport, affordable housing and environment were the top themes that came from regional communities
- Accessibility, availability, affordability and addressing homelessness were all key concerns for regional communities when it came to affordable housing and choice
- Communities said they needed more public transport options, more frequent services and better connectivity
- Infrastructure needs to keep up with the growing population in regional areas
- Accessing healthcare was also a key concern for many of our regional communities, including access to specialised health care and emergency services
- Participants from regional areas expressed the need for more protection around lakes, beaches, Country and the natural environment

**Regional participants refers to regional, rural and peri-urban.*



45 ENGAGEMENT
EVENTS



REGIONAL TOWNS AND
CITIES ACROSS *Victoria*

HELP US SHAPE THE FUTURE *for* VICTORIA

Scan the QR code
to visit our Engage
Victoria webpage



What kind of
Victoria do we
want in the future?

Maintaining Victoria's reputation as a healthy,
diverse, inclusive and liveable place.
Living locally – or being able to get what you
need without travelling too far from home.
Opportunities for people in rural and more
remote areas to be better connected with
the rest of the state through better travel times and
internet.

We need **your**
help to shape
the future of our
neighbourhoods

- What kind of city, suburb, town or region do you want to live in?
- What makes a city, suburb, town or region do thriving and liveable?
- What does it mean to you to "live locally"?



Show your
aspirations here

We need your
input to shape the
future of housing
in Victoria

ONLINE SURVEY INSIGHTS

- Over half of the participants from regional areas either owned a home outright or owned a home with a mortgage.
- Regional participants want a balanced approach to building more homes, considering not just the city but regional areas as well, to attract people to the regions and improve the economy outside of Melbourne.

- Internet access was most important for people in regional areas when asked what people needed to be able to do the job they want.
- Sixty-six per cent of regional participants use a car to travel to and from work or study but there is a strong preference for better public transport options to make it easier to get to and from work.

- Access to green spaces was a top priority for regional participants when choosing a place to live, compared to metro areas where access to public transport was a higher priority.

- Regional participants' top priority for Victoria is protecting the land where our food is grown. Many regional participants want to see more sustainability features, such as solar panels, double glazing and renewable energy sources, in planning for new buildings.
- Regional participants prioritised protecting existing bush, forests and river systems. In contrast, metro participants said better connected public transport was most important for creating more environmentally sustainable environments.

Need to increase infrastructure in regional areas to attract people there. Dumping people in regions without increasing services creates resentment in communities about people taking their jobs, houses and clogging up the roads

Sunraysia Farmers Market participant, Mildura

Better connectivity between metro and regional public transport

Oakleigh Central pop-up participant



DISCUSSION GUIDES

We also developed a discussion guide to encourage organisations, community and social groups to have conversations about the future of Victoria. We shared the discussion guide online via our community page on Engage Victoria, where it was downloaded over 360 times and completed by 54 groups.

We also visited community organisations in-person and delivered more than 350 printed copies of the discussion guide. The discussion guides were designed to create discussion but were also used in the youth and CALD workshops.

The discussion guides also directed people to our online information and survey.

350+ PRINTED  **COPIES DELIVERED**
to **COMMUNITY ORGANISATIONS**

360+ 
GUIDES DOWNLOADS
from **ENGAGE VICTORIA PAGE**

54 
GROUPS COMPLETED
the **DISCUSSION GUIDE ONLINE**

CREATE PLAN FOR VICTORIA

CREATE *your* PLAN FOR VICTORIA

First, let's get to know you



What's the name of your group?

Where are you meeting today?

How many people are in your group?

Suburb / location

Your vision for Victoria

In a few words, describe your vision

Now imagine that it's 2050 and you
What advice would you give us today
vision and shape the future for Vic

Improving equity and access

No matter where we live, access to jobs close to home is important. Many Victorians however face a range of challenges accessing essential daily needs. Below are the experiences of three everyday Victorians - Kai, Gab and Sam. Read each story and then rank the corresponding three scenarios depending on how much each would improve their commuting, travel and access needs.

- 1 = most improvement
- 2 = moderate improvement
- 3 = some improvement

What could make Kai's work commute easier?

Kai lives in a large regional town and works for a technology company in Melbourne - some days in an office and some days from home. On a good day Kai can get to their office within 35 minutes, but Kai often arrives late on office days due to traffic delays and freeway congestion.

More jobs closer to where Kai lives

Better internet access to enable remote working

Better public transport options to get to work

- More community health and medical services
- More green spaces outdoors
- More bike lanes and walking infrastructure
- More cooling and shading infrastructure
- Better water and sewerage services

New and affordable homes in the right location

As our population grows we want to make sure we have new homes in locations that you think are appropriate.

- Near parks and open space
- Near public transport
- Near the beach and foreshore
- Near shops and local daily needs
- Near schools and education



Tiny house / granny flat



Single detached house



Dual occupancy and units



Townhouses

Affordable social housing



Renewable Australia

100% Aussie

Handwritten notes and images related to renewable energy and Australian products.

Handwritten notes and images, including a drawing of a person and some text.

Handwritten notes and images, including a drawing of a person and some text.

Handwritten notes and images, including a drawing of a person and some text.

A variety of colorful images and text, including a drawing of a person and some text.

words to Describe 2050

TOURING AUSTRALIA! Japan

Beagle TV

15,000

Handwritten notes and images related to tourism and Australia.

BOLD & beautiful

PERFECT

Affordable housing

Sustainable and green

Unigas

Handwritten notes and images related to housing and sustainability.

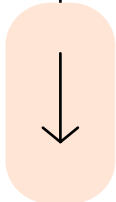
ENGAGING VICTORIANS WHERE *they* LIVE, WORK AND GATHER

I learnt that young people have many ideas, but don't often have the platform or safe spaces to share them. I learnt that we all want similar things, and together have such creative ideas and vision. I felt a deep sense of pride and connection with this work, and it really reaffirmed that I want to build a career in this space. I learnt so many new skills, including facilitation, public speaking, and general logistics and planning

Women at Pop-up activity in Portarlington

WE BORROW OUR WORLD FROM OUR CHILDREN. ALWAYS LEAVE A PLACE CLEANER THAN IT WAS BEFORE. WE SHOULD PRESERVE OUR PAST AND LEARN FROM OUR MISTAKES TO BE BETTER

Youth ambassador



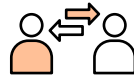
YOUNG PEOPLE

As they are the most impacted by long-term planning, youth were a key focus of the engagement. It is important that their vision and voice influences the development of the plan.

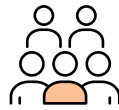
A co-design approach was adopted to empower young people to engage with their social groups.



Nine youth ambassadors



Three co-design workshops



200+ participants representing First Peoples, CALD, LGBTIQ+ and youth with disabilities



Three engagement workshops



1000+ pieces of feedback

KEY INSIGHTS

- There is a need for more affordable and diverse housing options with access to public transport, essential services and recreation areas.
- Better communication is needed between renters and landlords.

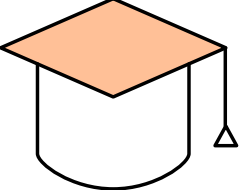
- Safe and accessible public transport was highlighted, especially for young women, LGBTQIA+ young people, First Peoples young people and culturally diverse communities.
- More local job opportunities are needed, including funding and support for careers in arts, music and creative industries.
- There is a need for increased mental health support and community initiatives to foster self-expression and wellbeing.

- Young people talked about more opportunities for in-person social connection and 'third spaces' for community activities and events.

- This group raised recognition and support for First Peoples-led sustainability practices, including more education in schools.





9 EVENTS HELD ON  **TAFE AND UNIVERSITY CAMPUSES WITH 600+ interactions**



ENGAGING VICTORIANS WHERE *they* LIVE, WORK AND GATHER

In 2050, the city is as green as ever with accessible transport, architectural advancement and full of youth, energy and beautiful sunsets and the aromas of coffee surrounding the city as usual

RMIT Student

AFFORDABLE HOUSING IS THE MOST IMPORTANT THING FOR ME BUT I ALSO CARE ABOUT HEALTH, THE ENVIRONMENT AND JOBS. WE NEED TO THINK AND PLAN CAREFULLY FOR ALL OF THESE THINGS

Chisholm Berwick Student

In the future I hope everyone is happy and has a safe and comfortable home

Preston Melbourne Polytechnic student



TAFE AND UNIVERSITY STUDENTS

We held nine events on TAFE and university campuses to bring the conversation directly to students and listen to their hopes for the future. We engaged with students of all different ages, abilities and cultural backgrounds.

- Chisholm Institute – Dandenong, Frankston, Berwick
- TAFE – Wodonga
- Melbourne Polytechnic – Epping, Preston
- RMIT – City campus
- Monash – Caulfield
- GoTAFE – Shepparton

KEY INSIGHTS

- Students talked about the need for more affordable, better-quality and secure housing options.
- More financial support was also raised, including paid placements, to assist students with affording housing and living expenses.

- More public transport options are needed, especially in regional and rural areas, so that students can access education, employment and essential services.
- More support is needed, especially for newly arrived migrants and international students, to gain relevant local work experience and job opportunities.

- More free and affordable community spaces are needed for events and activities to encourage social connections.
- Suggestions for better connected public transport and faster and more frequent services, especially at night time and on the weekends.

- More trees and more protection for existing trees is needed, and more parks and open green spaces.
- Better connected public transport and safer bike riding and walking paths to reduce reliance on cars is important to this group.
- Investment in technology and training for renewable energy transition was highlighted.



We need your help to shape a future state with equal access to jobs

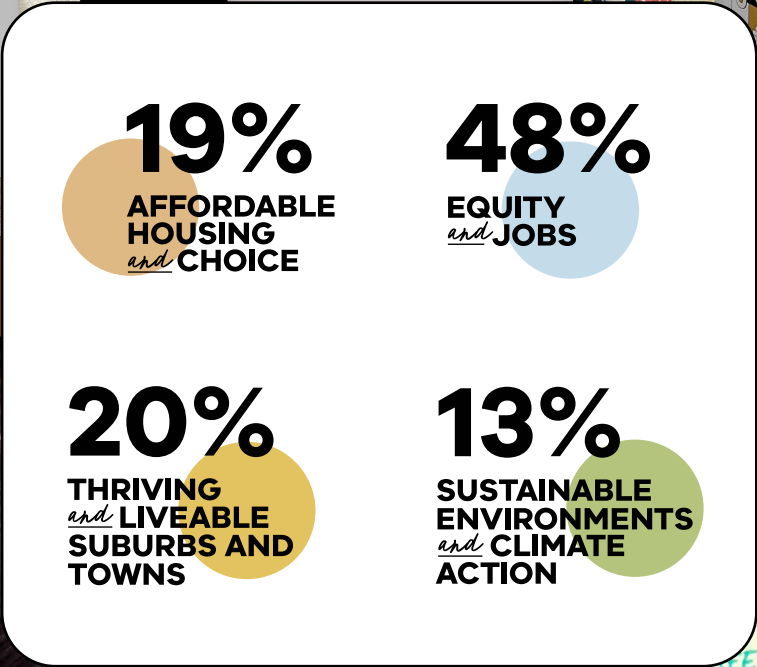
- What do our cities, suburbs, towns or regions need to help you reduce the time spent travelling to work?
- What things do you want to be able to access close to home?
- What would make sure Victoria remains a good place to do business?

What kind of Victoria do we want in the future?

- New homes for our growing population that are affordable and connected to employment, transport, schools and services.
- Protecting the local environment, water and power infrastructure, and providing green spaces for recreation and wellbeing.
- Different levels of roads and different types of roadways.

HELP US SHAPE THE FUTURE for VICTORIA

Scan the QR code to visit our Engage Victoria webpage



EQUITY and JOBS

Not enough job opportunities

Difficult to get your foot in the door when trying to find work + apprenticeships

Population in VIC is growing. Govt should focus on more highways + roads to improve traffic

Paid placement for community services course + Diploma 3 certificates

I can't get a job with overseas work experience. How can I get experience if I can't get a job?

The bus services going direct from home to the station is great but we need more bus services.

Not enough parking at Frankston Campus.

For new parents to the country it is hard to find a job close with good transport to schools from suburbs. Need a bus stop/shuttle to help new families find jobs

I have to start from zero with education when I moved here to try and get a job

back on and

Government internet connectivity

Centrelink doesn't give enough money. Can't pay bills

A train to Clyde

Need more paid placement opportunities because you need paid exp to get into work

COUNCILS NEED MORE INFORMATION + AUDIT TO KEEP THEM IN CHECK.

Broaden school curriculum with more choice + freedom to pursue passions.

Better connected transport system.

Community service + Volunteering Programs.

Leadership programs + opportunities for young people to become advocates.

VIC ROADS: HAVING A MORE-SILENT LICENSE FOR APPROXIMATELY 1000 DEAF + HEARING IMPAIRED PEOPLE. PREVENTIVE MEASURE. PRESENT BLY ON PRESENTS OF GUARDRAILS + SAFETY LAMPINGS + ENVIRONMENT.

aspirations here

Show your aspiration for sustainable environments and climate change on a post-it and stick it on this board.

THRIVING and LIVEABLE SUBURBS AND TOWNS

We need your help to shape an environmentally sustainable state

What are the most important things for making environmentally sustainable cities, suburbs, towns or regions?

What climate actions do we need to prioritise?

HELP US SHAPE THE FUTURE for VICTORIA

Scan the QR code to visit our Engage Victoria webpage



Welcome to our
community
hub

Suggest
Board

HOUSES
JOBS
GREEN SPACES
Disability Support
Libraries
Cafes
Public roads
PT. (rents)
Free
M...
shopp...
WELKING COMMUNITY
Forests/Rivers/c...
ing garde...
water treat...
2024 JULIAN
2050
Apr

The houses are pretty modern and the community is kind. Every afternoon the streets are filled with children. The parks are filled with activity

Student of Australian International Academy

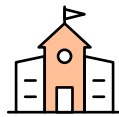
In Riddells Creek, there's a very kind and caring community, we care for the town pretty well and it's just amazing to live here. We have great greenery and facilities

Student of Riddells Creek Primary School

SCHOOL STUDENTS

Workshops were held in primary and secondary schools to ensure that children and young people's voices were included in conversations about the future of Victoria. Participants had clear insights about what their neighbourhood needs to make it feel accessible and safe for them.

During the workshops, students developed a zine 'Pocket Portal to 2050' with prompts to reflect on their communities today and creatively explore the future



20 School workshops

12 metro, 8 regional, 12 secondary and 11 primary school



One primary and secondary school aged workshop



500+ Students



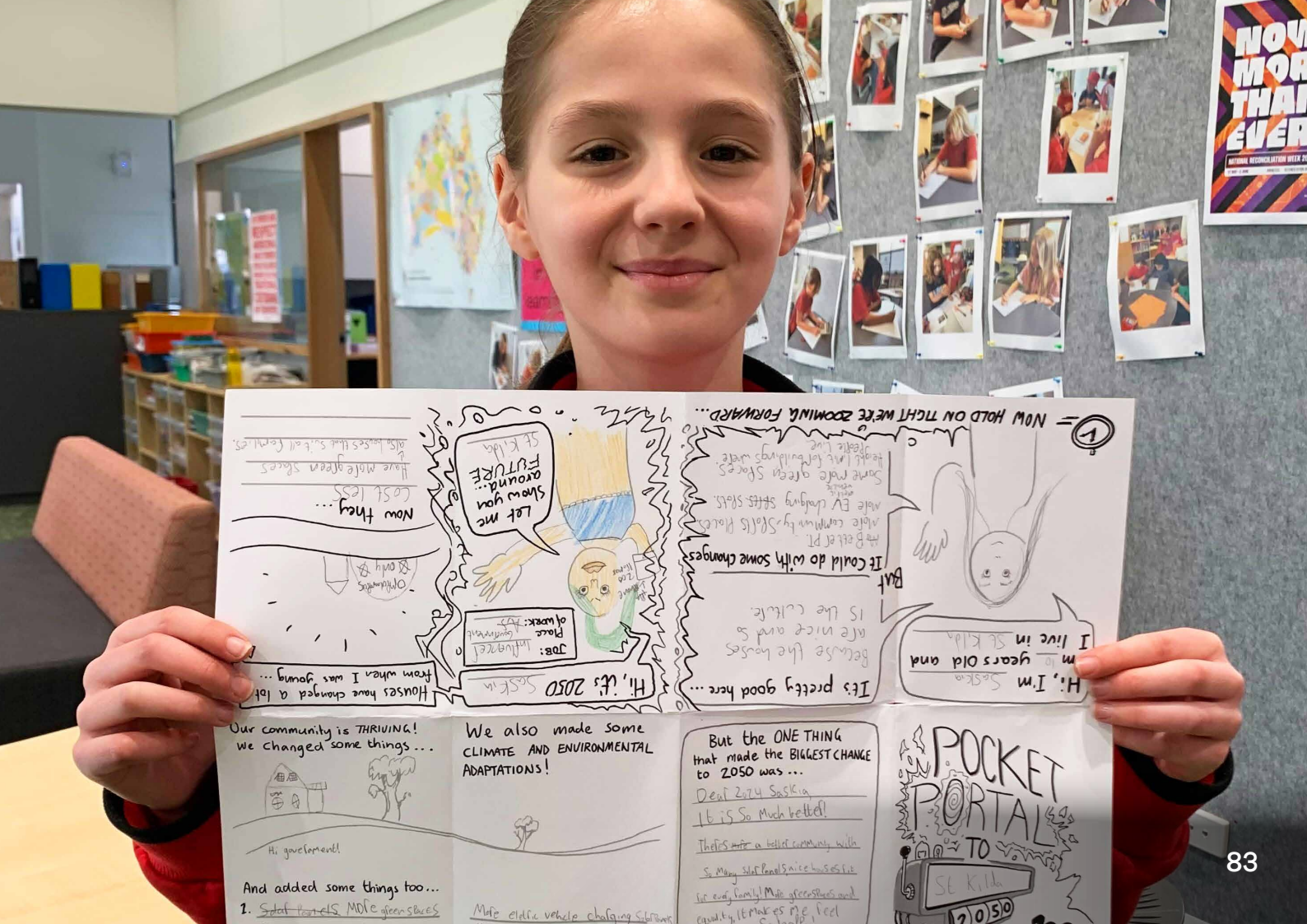
KEY INSIGHTS

- Access to more affordable housing is needed, as is healthy food and essential services.
- Different types of housing are needed to suit different people and families.

- There is a need to understand and make more of the potential of technology and AI to transform the way we work.
- More job opportunities are needed, and the freedom and flexibility to work from home or anywhere in the world.

- Safe and friendly neighbourhoods are important, with lots of parks and open spaces, sporting facilities, and activities for children and young people.
- More affordable public transport and well-connected communities make for better suburbs and towns.

- There is a need to plant more trees, increase green spaces and protect wildlife habitat.
- We need more homes with sustainable features, such as renewable energy and smart home technology.



SECTION 1: VISION FOR VICTORIA
Describe your vision for Victoria.
What advice would you give the Victorian Government to support our vision and shape the future of the state?



ENGAGING VICTORIANS WHERE
they LIVE, WORK AND GATHER

I'D LIKE TO SEE MORE
COMMUNITY FACILITIES
LIKE LIBRARIES,
COMMUNITY CENTRES
AND UNIVERSITIES IN
REGIONAL AREAS

*Shepparton CALD workshop
participant*

Develop liveable,
sustainable cities
with better active
transport, more green
spaces and a focus on
renewable energy

*Online CALD young people
participant*



MULTICULTURAL COMMUNITIES

We worked with cultural ambassadors to run workshops with culturally and linguistically diverse (CALD) communities across Victoria.

- **Six ambassadors** from culturally and linguistically diverse (CALD) communities. The ambassadors were influential leaders and represented the Lebanese, Vietnamese, Chinese, Indian and Afghan communities.
- **Seven workshops**, including three online sessions in language for the Afghan community, Arabic-speaking community and Chinese community.
- **1 dedicated online session** for young people from CALD communities.
- **11 different languages** (Arabic, Mandarin, Korean, Vietnamese, Malay, Thai, Spanish, Turkish, Italian, Greek, and Macedonian) for our engagement materials and surveys.
- **30 survey participants** who responded in a language other than English.

KEY INSIGHTS

- There is a strong preference for family homes near public transport, schools, parks, shops and essential services.
- Different housing options are important for supporting multi-generational living and to foster community connection.

- There is a need to support decentralisation and to create more job opportunities in regional areas. Incentives are also needed to attract workers to the regions and improve the quality of education, employment and healthcare.
- More affordable and accessible healthcare and mental health services are required, especially for regional communities.

- We need more walkable neighbourhoods with good public transport connections to reduce reliance on cars and make it easier to access services.
- Opportunities to celebrate culture and connect with the wider Victorian community are needed, like multicultural festivals and events.

- We need sustainable and environmentally friendly design for housing and cities.
- Preservation of natural resources, environmental responsibility and sustainable economic development are important to this group.



reached over

180+



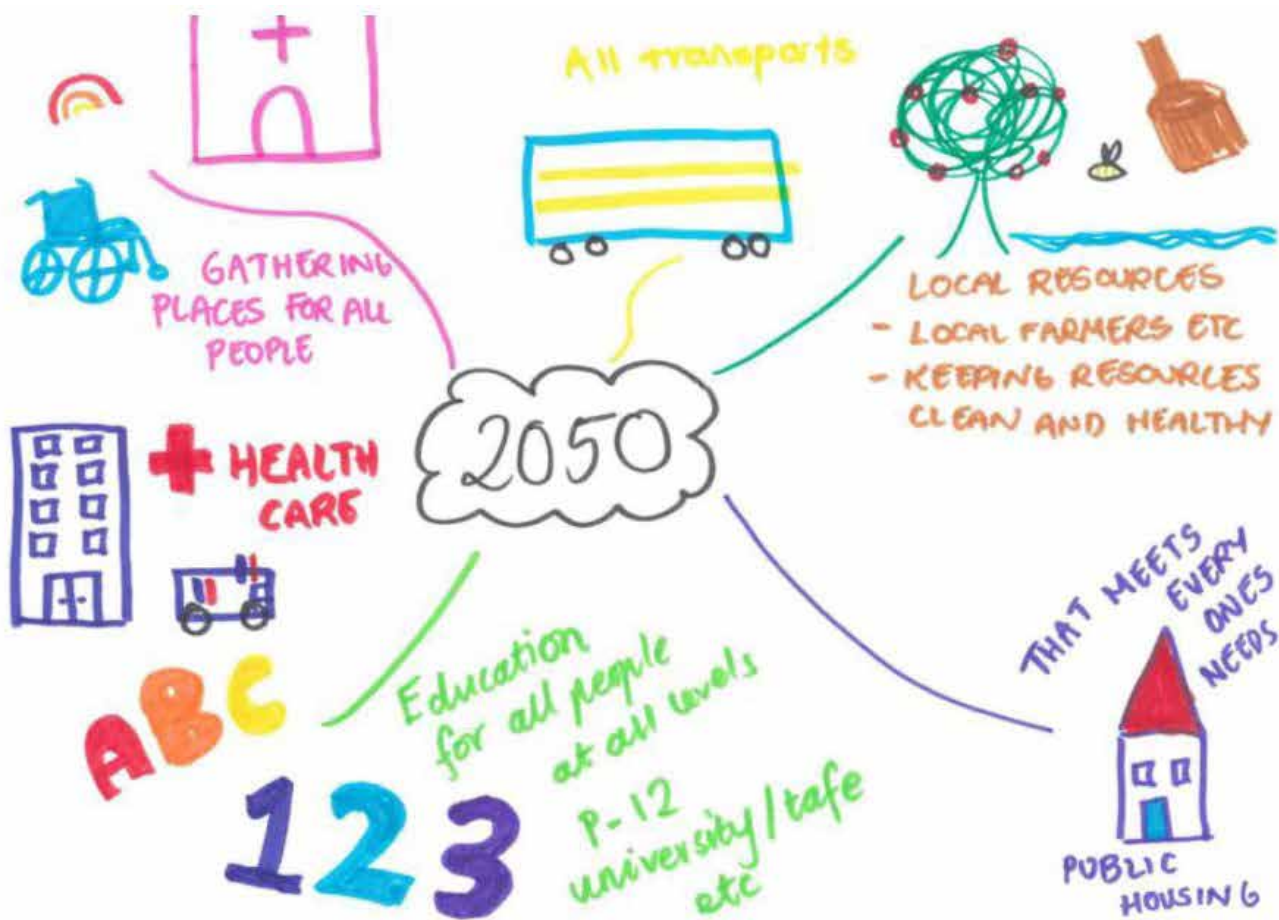
**LEADERS AND
COMMUNITY
MEMBERS**



from

29+
CALD GROUPS





I CAME TO MARYBOROUGH UNDER HARD CIRCUMSTANCES AND NOW I HAVE A CALM, CARING COMMUNITY, AND I HOPE THIS CONTINUES FOR OTHER PEOPLE WHO MOVE HERE!

VCOSS participant, Cobaw Community Health, Sunbury

PEOPLE EXPERIENCING DISADVANTAGE

In partnership with the Victorian Council of Social Services (VCOSS), we engaged with people experiencing disadvantage in regional and rural areas to understand their experiences and ideas for the future of Victoria.

Workshop locations:

- Maryborough Community House
- Maryborough
- Sunbury and Cobaw Community Health
- Sunbury
- Waminda Community House
- Benalla

It is important to make good planning decisions for the future generations, the current way the area is structured is not helping people who are disadvantaged

VCOSS participant, Waminda Community House, Benalla



KEY INSIGHTS

- We need more affordable and accessible housing options, especially for people with disabilities and older people.
- Investment in quality social housing is important, as well as aged care and specialist disability housing and services.

- Better connected public transport is needed to make it easier to access employment, healthcare and social services.
- Increased services in regional and rural areas are needed as well as building more housing to attract healthcare and community sector workers.

- When building new houses in growing areas, make sure that there are public transport options, community services and places for people to socialise and connect.

- We need to build homes and buildings that are safe, sustainable and climate resilient.
- We need more tree canopies, green spaces, and preservation of nature.



3 WORKSHOPS  **OVER 180+ PIECES**
25 PARTICIPANTS *of feedback received*





ENGAGING VICTORIANS WHERE
they LIVE, WORK AND GATHER

HOUSING SHOULD BE AFFORDABLE, ACCESSIBLE AND APPROPRIATE - APPROPRIATE TO THE PERSON'S NEEDS

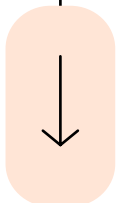
Online accessibility workshop participant.

In high-rise commission housing, they need video accessible announcements in lifts and in the building for emergencies for hard of hearing/deaf people

Accessibility workshop participant, Melbourne CBD

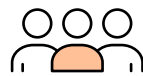
It's really hard to know whether or not to disclose or not disclose my disability when applying for jobs. We need workplaces that are safe

Accessibility workshop participant, Melbourne CBD



PEOPLE WITH DISABILITIES

We engaged with people with disabilities, as well as representatives of DTP's Accessible Transport Advisory Committee, to understand their vision for a more inclusive and accessible Victoria.



25 participants attended



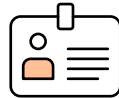
250+ pieces of feedback



Three workshops in total



Two workshops online



One workshop in-person

KEY INSIGHTS

- There is a need for more affordable *and* accessible homes, with the flexibility to adapt to people's changing needs.
- More support is needed with applying for social and accessible housing options.

- We need to break down barriers so that people with disabilities have equitable access to employment opportunities.
- We need to create more flexible, inclusive and accessible workplaces, where people with disabilities are included and supported to thrive.

- We need more accessible public transport network and community spaces.
- The group raised the use of universal design principles to design spaces that are inclusive and accessible to as many people as possible, regardless of age or ability.

- More climate resilient infrastructure and renewable energy solutions are needed.
- The group highlighted improved communication and support for people with disabilities during emergency events, such as bushfires and floods.





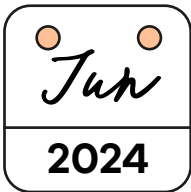
Our Challenge / Remit

By 2050, Victoria's population is projected to exceed 10 million, with more than 8 million people calling Melbourne home. As we plan for this growth, it's crucial that we unite around a vision that guides us towards a future Victoria that is healthy, equitable, sustainable and thriving.

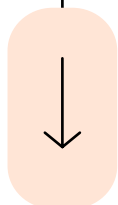
What do you want Victoria to be like in 2050?

INDUSTRY ENGAGEMENT EVENT

Fifty-six industry stakeholders attended our industry event held in June 2024. This event provided stakeholders with an overview of the drafted housing targets, community consultation updates and feedback on emerging ideas and concepts, as well providing guidance on how to provide formal submissions.



56 **INDUSTRY
STAKEHOLDERS**
attended



KEY INSIGHTS

- Implementing minimum social and affordable housing supply in new developments was the top priority when asked about housing priorities for delivery.
- For prioritising homes near public transport, services and shops, key recommendations included:
 - more growth towards regional areas
 - clearer density controls and aligned planning to allow for higher density housing near facilities
 - a focus on integrating community amenities into future developments.

- Creating more transport connections that people can conveniently access as they move from place to place was a top priority for equity and jobs.
- To protect land for employment and improve access to jobs and services, key recommendations included:
 - working closely with industry to understand and manage the supply of industrial land
 - supporting mixed-use development across the state, including commercial spaces like cafés in urban areas
 - promoting a balance between housing and employment areas to create walkable, mixed-use communities.

- Coordinating new developments with the delivery of infrastructure was the top priority for thriving and liveable suburbs.

- Adopting a state-wide approach to improve the design and environmental sustainability of all residential developments was the top priority for sustainable environments and climate action.



AFFORDABLE HOUSING and CHOICE

PRO **A** **CON**

- Can be used to provide change.
 - User 385 + infrastructure.
 - Could limit job growth.
 - Will not support our local economy as it will be used to pay for other projects.
 - Local economy will be hit as it will be used to pay for other projects.
 - Local economy will be hit as it will be used to pay for other projects.

PRO **B** **CON**

- Treats real people as second rate citizens. Degrades the environment.
 - Expensive to transport + space.
 - Impaired infrastructure that might not benefit small communities comparable to the impact on those towns.
 - Encourage more other infrastructure investments.
 - Reduction of environmental integrity.

PRO **A** **CON**

- Details to improve safety, efficiency.
 - Identify action.
 - User 385 + infrastructure.
 - Could limit job growth.
 - Will not support our local economy as it will be used to pay for other projects.
 - Local economy will be hit as it will be used to pay for other projects.

PRO **B** **CON**

- Scale limit the space for this + it.
 - Buys jobs + keeps small towns alive.
 - Employment generation.
 - Under use of space.
 - Infrastructure is already there.
 - Worker, job, etc or university, industry.
 - Can't think about other jobs right now as the bill funding.

PRO **A** **CON**

- Details to improve safety, efficiency.
 - Identify action.
 - User 385 + infrastructure.
 - Could limit job growth.
 - Will not support our local economy as it will be used to pay for other projects.
 - Local economy will be hit as it will be used to pay for other projects.

PRO **B** **CON**

- Treats real people as second rate citizens. Degrades the environment.
 - Expensive to transport + space.
 - Impaired infrastructure that might not benefit small communities comparable to the impact on those towns.
 - Encourage more other infrastructure investments.
 - Reduction of environmental integrity.

PRO **A** **CON**

- Details to improve safety, efficiency.
 - Identify action.
 - User 385 + infrastructure.
 - Could limit job growth.
 - Will not support our local economy as it will be used to pay for other projects.
 - Local economy will be hit as it will be used to pay for other projects.

PRO **B** **CON**

- Scale limit the space for this + it.
 - Buys jobs + keeps small towns alive.
 - Employment generation.
 - Under use of space.
 - Infrastructure is already there.
 - Worker, job, etc or university, industry.
 - Can't think about other jobs right now as the bill funding.

PRO **A** **CON**

- Details to improve safety, efficiency.
 - Identify action.
 - User 385 + infrastructure.
 - Could limit job growth.
 - Will not support our local economy as it will be used to pay for other projects.
 - Local economy will be hit as it will be used to pay for other projects.

PRO **B** **CON**

- Treats real people as second rate citizens. Degrades the environment.
 - Expensive to transport + space.
 - Impaired infrastructure that might not benefit small communities comparable to the impact on those towns.
 - Encourage more other infrastructure investments.
 - Reduction of environmental integrity.



ENGAGING VICTORIANS WHERE
they LIVE, WORK AND GATHER

THE FINAL TARGETS SHOULD BE BASED ON CAREFUL ANALYSIS OF GROWTH OPPORTUNITIES IN EACH AREA AND SPECIFY THE TYPE OF HOUSING REQUIRED TO MEET THE NEEDS OF THE COMMUNITY, INCLUDING THE NEED FOR AFFORDABLE HOUSING AND CHOICE

*Victorian Planning and
Environmental Law Association*

COUNCIL ENGAGEMENT ON HOUSING TARGETS

In June 2024, the draft statewide housing targets were released, outlining where the 2.24 million new homes could be built across Victoria by 2051.

The targets were designed to build more homes in places where people can access the type of home, public transport, community services and facilities they'd like.

The targets were based on:

- how close an area is to jobs and services
- the level of access to existing and planned public transport
- environmental hazards like flood and bushfire risk
- development trends and places already identified for more homes
- demonstrated development potential in established regional cities.

Round 1 June 2024

Focused discussions on growth and identifying any barriers within each of the Local Government Areas

Round 2 July 2024

Discussions to provide guidance on the submissions process and feedback from local councils on the new growth expectations and approach.



Out of the 79 local councils, we received 63 council submissions.

Council feedback

- Councils told us that housing targets should be measured as housing capacity, not just homes completed.
- There were requests by councils to see the methodology behind how the targets were established.
- Councils want state government to set a minimum affordable housing contribution.
- The state needs to give clear guidance on the impacts of open space and other amenities alongside the housing growth.
- The 70/30* aim - would be a difficult target for regional areas.

Industry feedback on housing targets

We also received feedback from industry on housing targets.

- Proposed housing targets were largely supported by industry stakeholders.
- The 70/30* aim is not supported in regional areas however 50/50 is more achievable.
- Housing targets should be aligned with other targets like transport hubs, services and social.
- Targets should specify housing types as this will vary greatly from township to township.
- Priority should be given to improving access to services and key places in low-income areas, along with providing social and affordable housing to promote equity.
- Delivery of increased housing density and diversity in regional areas will require state or federal government support.

Community feedback on housing targets

The community also provided feedback on housing targets.

- The draft housing targets received a positive response.
- Several submissions mentioned local context is important to ensure heritage, environment and place quality is maintained.
- Community would like the opportunity to have a say about how the targets will shape their communities.
- There were concerns that the housing targets could impact climate change, the environment and the availability of public open space.
- Some submissions suggested that regional targets be higher, especially in the regional cities.

**The 70/30 aim means 70 per cent of new homes are to be built in established areas and 30 per cent of new homes are to be built in growth areas.*



Jun 2024 to Jul 2024

2 ROUNDS OF ONE-ON-ONE CONSULTATION SESSIONS

With **79** LOCAL COUNCILS

2 LOCAL COUNCIL WEBINARS



BIG IDEAS *for* VICTORIA'S FUTURE

Which Big Idea is the most important to you?

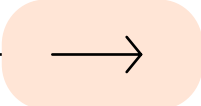
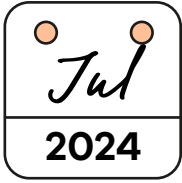
AFFORDABLE HOUSING and CHOICE
More housing options for all Victorians, including social & affordable homes

EQUITY and JOBS
More jobs and opportunities closer to where you live

THRIVING and LIVEABLE SUBURBS AND TOWNS
More trees and greenery, better parks and community spaces

SUSTAINABLE ENVIRONMENTS and CLIMATE ACTION
More protections for our environment

PHASE THREE

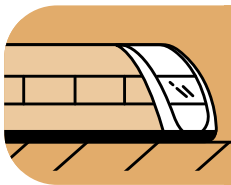


COMMUNITY ENGAGEMENT – EXPLORING THE BIG IDEAS FOR VICTORIA’S FUTURE


Our approach

During phase one, between November 2023–June 2024 we had more than 850 hours of conversation with community, councils and industry stakeholders. From the data we collected we were able to identify eight “Big Ideas” to transport Victoria.

These are the themes that were most common across the feedback we gathered:



More homes in locations with great public transport access



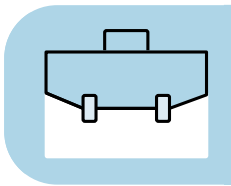
More certainty and guidance on how places will change over time



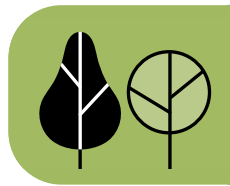
More housing options for all Victorians including social and affordable housing



More trees and urban greening in our parks and community spaces



More jobs and opportunities closer to where you live



More protections from flooding, bushfire and climate hazards



More options for how we move from place to place



Greater protection of our agricultural land

BIG IDEAS SURVEY

Victorians had the opportunity to provide feedback and rank possible actions for each of the Big Ideas.

Key insights



359 total surveys received



337 from the community



22 from industry

- Strong support for government action to create **more affordable housing**, particularly in denser urban areas.
- Strong support for **more apartments and townhouses** in existing suburbs. Focus on quality design, accessibility, and fit within the urban landscape.

- Feedback called for the development of **new employment hubs** around Melbourne to alleviate pressure on Melbourne's CBD and reduce congestion.
- Many people want the public transport network to be **better integrated with active transport** options like cycling and walking.

- Walkable neighbourhoods with good public transport connections are key to **enhancing liveability**.
- Strong support for tree canopy targets, recognising the importance of reducing the urban heat island effect and **improving air quality**.

- Feedback called for more **sensitive residential planning** that takes environmental impact into account during design and development.
- Concerns about the impact of **urban sprawl on rural communities** and the long-term viability of agricultural production.

LET'S TALK ABOUT VICTORIA'S FUTURE

Your discussion guide to shaping
the future for Victoria



Visit engage.vic.gov.au

COMMUNITY EVENTS

We partnered with Open House Melbourne to host a program of events and exciting activations to reach a wider audience and to encourage conversations about our future cities, towns, suburbs and regions. Our conversations were based around the **eight Big Ideas** and people had the opportunity to vote on what was most important to them.

We engaged with over 1600 people through events across metro and regional Victoria:

- Open House InfoHub at, Swanston Walk, **Melbourne CBD**
- This is Public event at Capitol Theatre, **Melbourne CBD**
- Tours of Box Hill Community Arts Centre, **Box Hill**
- Tours and speaking panel, The Round, **Box Hill**
- Tours of Box Hill Town Hall, **Box Hill**
- Open play and speaking panel at Ballarat Library, **Ballarat**
- Open play, speaking panel and tours at The Library, **Warrnambool**
- Open play at Shepparton Library, **Shepparton**
- Speaking panel at Shepparton Arts Museum, **Shepparton**

Key insights

- Across the Open House events in both Melbourne and regional Victoria, **“more housing options for all Victorians, including social and affordable homes”** was consistently the most popular Big Idea.
- The least popular Big Idea was **“more certainty and guidance on how places will change over time”**. Many people seemed confused by this idea and unsure of its potential impacts.
- Children and young people often voted for **“more trees and urban greening in our parks and community spaces”**. This aligned with the feedback from school students during our earlier workshops.
- When we engaged with university students, we found that **“more jobs and opportunities closer to where you live”** was a key priority.
- At the regional events, **“more protection from flooding, bushfires and climate hazards”** was among the top priorities.

Community webinars

We hosted two webinars for community organisations to provide an update on our engagement activities, offer an opportunity to ask questions and to support them with the submissions process.

We had 70 attendees representing community groups and organisations across Victoria. Following the webinars, we saw an immediate increase in participation and Big Ideas survey responses on our community page on Engage Victoria.

SOME QUESTIONS ASKED BY OUR COMMUNITY ORGANISATIONS:

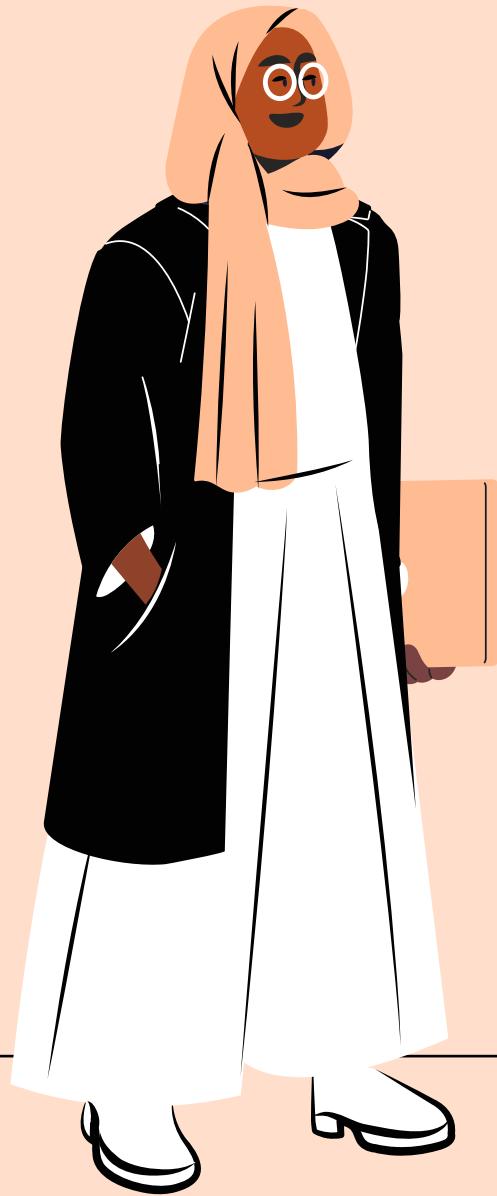
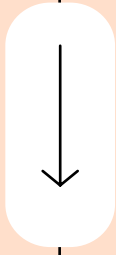
What are the initiatives to ensure more people decide to settle in regional areas?

What are the plans for better transport and local health services for older community members?

How are you weighting the conflicting objectives of developing the urban forest and housing more people?

It's great to see the amount of consultation done to date... how will this new plan be introduced to Victorians and when will it take effect?





ENGAGING VICTORIANS WHERE
they **LIVE, WORK AND GATHER**



**WRITTEN
SUBMISSIONS**



247 total written submissions received



328 files have been submitted



+35,000 paragraphs have been analysed



COMMUNITY SUBMISSIONS

Between July and August 2024, we sought written submissions from community organisations and individuals.

This process gave community an opportunity to formally present their ideas and thoughts for the plan.

The community groups that provided submissions included advocacy groups specific to different regions, interest groups for transport, environment, heritage, housing and land use planning.

...people living in medium and high-density housing need open spaces the most. If you consider the main difference to an individual's experience living in a detached dwelling vs medium or high density housing – the biggest difference is having private open space or not

Individual submission



63 Community submissions

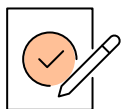


37 Community groups and organisations



26 Individual submissions

Top themes from the community submissions:



Governance reform



Affordable and social housing



Public transport

KEY INSIGHTS

- Community broadly support public, social and affordable housing as well as increasing housing density near public transport hubs.
- Community want more diverse housing options and better use of land to deliver more homes to cater for diverse social and cultural needs.

- More than 25 per cent of community agreed that accessible active and public transport is essential for a plan for Victoria to provide alternatives to private cars, with bus reform also being a priority for community.
- Most community submissions support having more employment opportunities where people live, by ensuring there is land for industrial and commercial purposes, especially in regional areas.
- Linking employment areas to residential areas with good access to public transport services was highlighted as a key consideration.

- Protecting and enhancing our tree canopy on both private and public land was strongly supported by 19.5 per cent of submissions, with concerns that housing targets may impact this.
- Community want open spaces to be preserved and enhanced so that access to areas for outdoor recreation is maintained, especially with housing increasing in existing suburbs.

- Protecting regional land values had the most support from the community submissions, particularly for agricultural use.
- Environmental hazards like flood and bushfire risk should be at the forefront of any consideration of increasing housing density.
- Community want stronger protections and enforcement of environmentally sustainable principles when it comes to planning and building processes.

Affordable housing isn't something that should be 'implemented' as a minimum – it needs to be mandatory. Housing and shelter are a basic human need.

Public transportation and environmentally friendly housing together are the two pillars that can deliver a thriving and liveable suburb.



LOCAL COUNCIL SUBMISSIONS

Of the 79 local councils in Victoria, 64 provided submissions. While some submissions shared common themes, many were specific to metropolitan and regional areas, so we have summarised the data based on metropolitan and regional.

- 31 of the 31 metropolitan councils
- 33 of the 48 regional councils

66  **WRITTEN SUBMISSIONS**
from **LOCAL COUNCILS**

Metropolitan

The submissions from metropolitan councils show support for changes to the planning system, and a single statewide plan is seen as beneficial for addressing challenges and opportunities of the growing population.

Support for the plan is tied to the need for proper planning, funding and the development of community amenities to improve liveability for current and future residents.

Regional

Many of the submissions received from regional councils did not touch on all four pillars. A statewide plan was strongly supported to acknowledge the differences across Victoria and the diversity of local circumstances in rural and regional areas. Appropriate planning, funding and community facilities and services such as public and active transport networks was also highlighted as a key priority.

METROPOLITAN KEY INSIGHTS

- There is support for clearer targets on housing diversity and the introduction of mandatory social and affordable housing targets.
- We should increase the density of housing developments around activity centres across Melbourne.
- Development should be around transport hubs to respect local character, heritage and environmental features that communities value.

- Improvements are needed to public and active transport including investment in the transport network and increased frequency of services.
- We need to balance employment and housing land, particularly in activity centres. This could include mandatory minimum targets for employment land.
- Ensure the plan for Victoria represents all sections of community including minority and economically disadvantaged groups.

- While there is support for the plan to show how areas will grow and change over time, it's important that this change doesn't take away from the local character or values.
- Concerns were raised about services and facilities not being able to keep up with the growing population which could negatively impact liveability.
- Submissions included recommendations to better utilise public land and waterways to enhance open space and tree canopy cover.

- There is strong support to address the challenges of climate change in the plan for Victoria and for creating sustainable, resilient communities.
- Implement environmentally sustainable design (ESD) standards into the Victoria Planning Principles was also strongly supported.
- We need to identify and protect areas of significant biodiversity value.

REGIONAL KEY INSIGHTS

- While regional councils recognise the need for more housing around transport hubs, funding is needed to invest in public and active transport in these regional and rural areas that currently have limited or no services available.
- Regional councils recommended we review planning policy to increase social and affordable housing and support the introduction of social and affordable housing targets.

- Investment is needed in the public transport network and increased frequency of services.
- There is support for better integration of employment opportunities with housing growth to ensure workers can find appropriate housing.
- Reliance on private vehicles in rural areas where there are limited or no public transport services means investment in the road network should also be considered.

- We need statewide mapping to identify and protect important employment, agricultural and environmental areas.
- It is important to have open spaces to support growing communities, with increased funding for open spaces and related facilities.
- There is support to set a minimum target for tree canopy cover, complemented by tools to increase tree canopy cover on private land and community education programs.

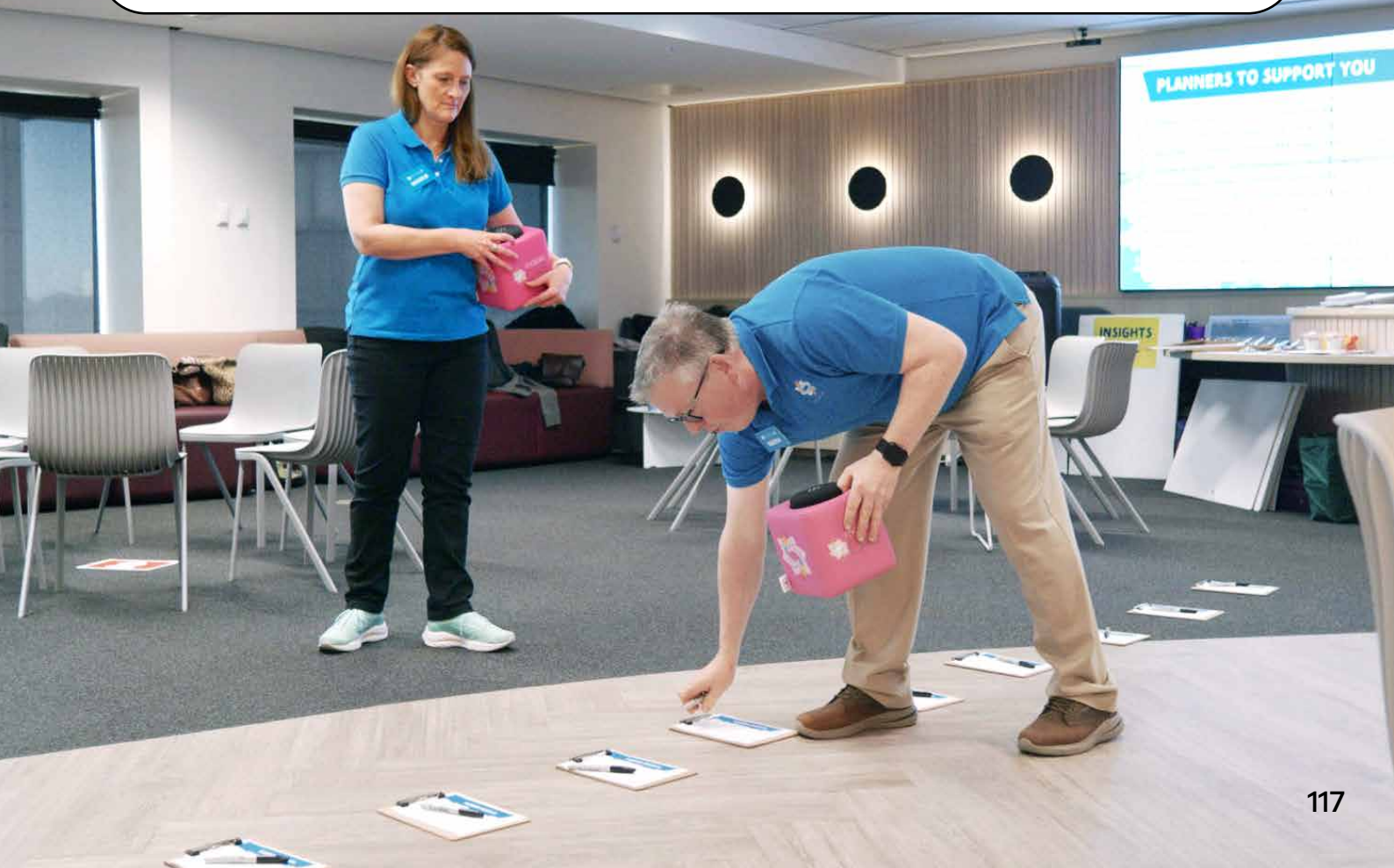
- While renewable energy is generally supported, there are concerns about how the facilities for renewable energy projects might impact the environment and agricultural productivity in rural areas.
- Regional councils strongly support identifying and protecting regional land values including agriculture, biodiversity, landscape and tourism.



117 SUBMISSIONS FROM
INDUSTRY STAKEHOLDERS



INCLUDING PLANNING CONSULTANTS,
DEVELOPERS, LANDOWNERS,
ACADEMIA AND ADVOCACY GROUPS



We want to encourage investment in clean energy industries that provide an ongoing economic, social and environmental benefit to our region

Committee for Frankston & Mornington Peninsula

119 
**INDUSTRY
STAKEHOLDERS**

INDUSTRY SUBMISSIONS

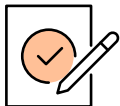
We received 117 submissions from industry stakeholders, including planning consultants, developers, landowners, academia and advocacy groups.

Some submissions included requests for specific land parcels in relation to adjusting the Urban Growth Boundary*.

Industry submissions highlighted the need for coordinated planning and delivery of services alongside the housing target development.

**The Urban Growth Boundary (UGB) was established as part of the metropolitan planning strategy, Plan Melbourne 2030. The purpose of the UGB is to manage and direct urban growth to areas where appropriate infrastructure and services can also be supplied, as well as protecting peri-urban land and environmental features.*

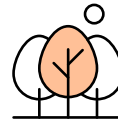
Top themes from the council and industry submissions:



Governance reform



Affordable and social housing



Natural disaster resilience and climate readiness

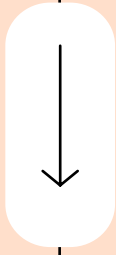
KEY INSIGHTS

- Aside from the housing targets, industry submissions were about the types and locations of additional housing proposed for Victoria.
- There is strong support to build housing around transport hubs as well as a need to make sure roads, transport, sewerage and water and other services are planned for at the same time.
- Setting social and affordable housing targets is a priority to assist with housing affordability via supply.

- Submissions supported improving public transport accessibility and delivering more active transport options as alternatives to using the car.
- We need to plan for, and deliver affordable workspaces such as creative industries, start-ups and small-scale manufacturers.
- We need to design employment land to intersect with residential land to allow non-car access to jobs in these areas.

- Planning for community services and facilities at the same time as additional housing creates liveable and healthy communities.
- There is a need for social equity – access for all to open spaces – and to design spaces for children, especially with increased housing density, smaller homes and apartments.
- Climate resilience is a priority – especially open, green space and tree canopy.

- There was strong support for this pillar across all industry submissions, especially for protecting communities from hazards that may arise due to climate change impacts as well as protecting both biodiversity and agricultural land from inappropriate development.
 - Submissions raised the need for clear, available and transparent mapping data.
 - There is a need for environmentally sustainable design (ESD) standards to be applied to more developments.
 - We need greater balance between residential development, environmental protections and other suitable land uses.



ENGAGING VICTORIANS WHERE
they **LIVE, WORK AND GATHER**



**SHAPE VICTORIA
PEOPLE'S PANEL**

COMMUNITY ENGAGEMENT – SHAPE VICTORIA PEOPLE’S PANEL



The extensive community engagement program culminated in the Shape Victoria People’s Panel.

OUR APPROACH

The panel of 49 people were brought together to participate in a “deliberative engagement” process, reviewing the extensive data collected throughout the full engagement and developing a final vision to guide future planning in Victoria.

Deliberative democracy

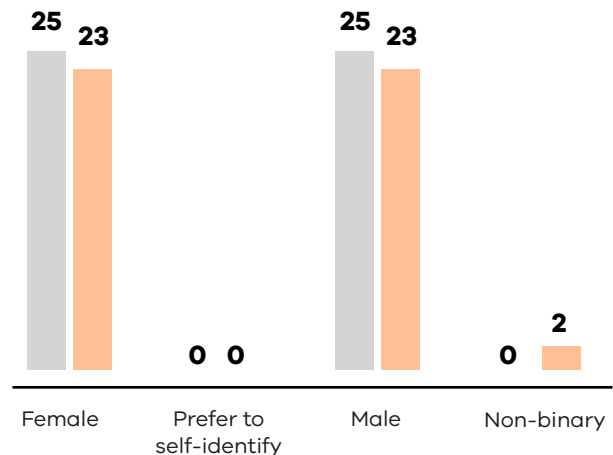
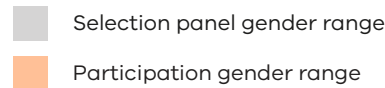
Deliberation goes beyond conversation and dialogue. It requires those deliberating to weigh up options and come to judgement. Deliberation isn’t about people giving you a wish list or a list of ideas. It results in clear direction for organisation decision makers.

Recruitment

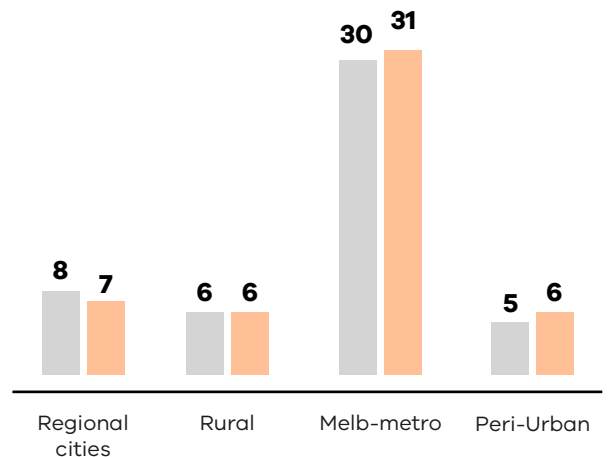
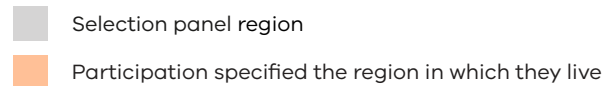
The Panel comprised 49 Victorians with different life experiences from regional, rural and metropolitan Victoria. To ensure a breadth of views, twenty thousand randomly selected households received an invitation to participate, 500 volunteered and were stratified using ABS metrics to represent the diversity of the state. A further random selection process provided the final 50. One person was unable to participate.

The group met for two full weekends in September 2024.

Gender range



Living

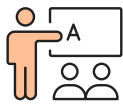




49
Participants



1,513 Participant hours
spent in deliberation



11
Expert
speakers



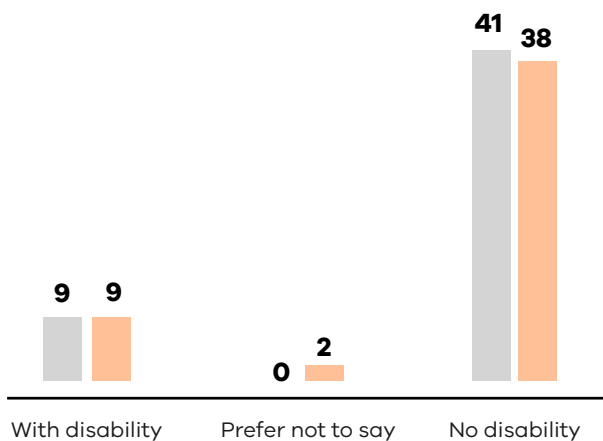
5 Sessions
Four full days in person
One online orientation session

Output:

Four pillar
narratives
One overarching
vision for
Victoria 2050

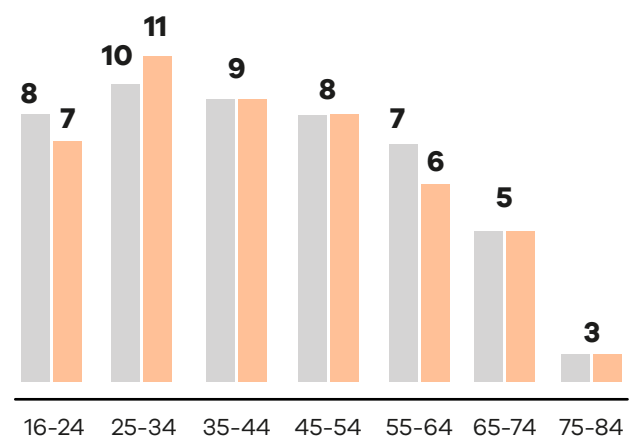
Disability

■ Selection panel on disability
■ Participation disclosure of a disability



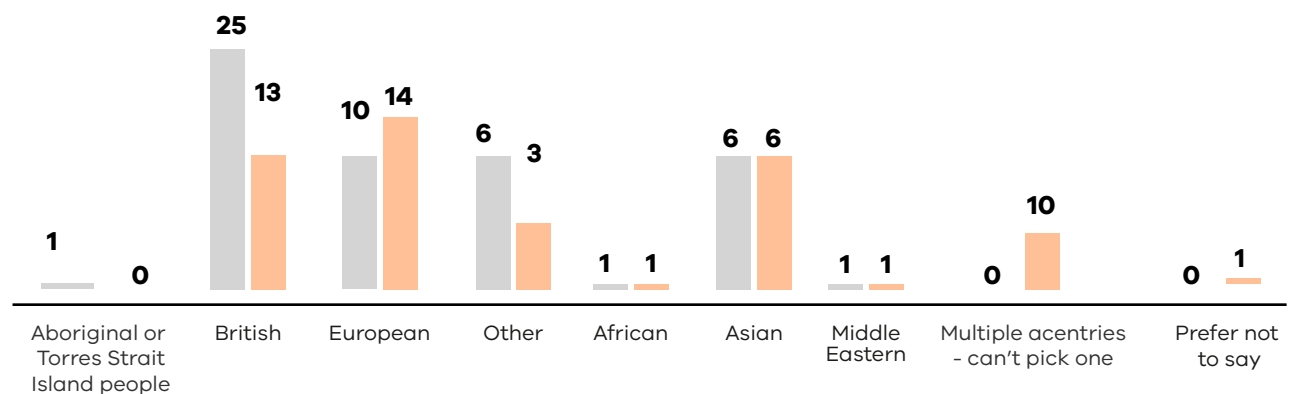
Age range

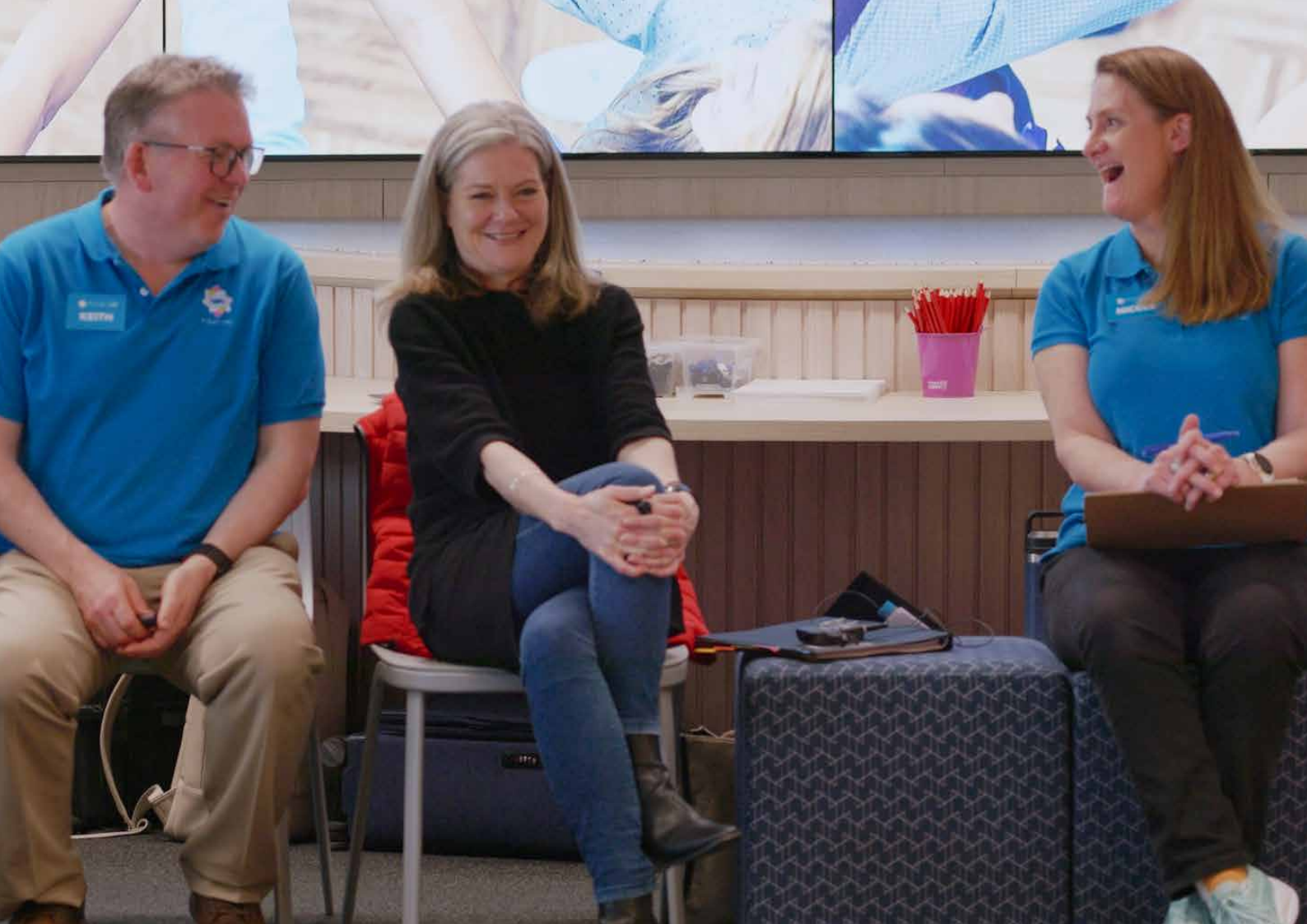
■ Selection panel age range
■ Participation age range



Ancestry

■ Selection panel ancestry range
■ Participation told us their ancestry






ENGAGING VICTORIANS WHERE
they **LIVE, WORK AND GATHER**

THE CHALLENGE

The panel was tasked with developing a vision for Victoria based on the data collected from across the engagement program. They also developed narratives for each of the engagement pillars.

This is the challenge that was presented to them:

By 2050, Victoria's population is projected to exceed 10 million, with more than 8 million people calling Melbourne home. It's crucial that we unite around a vision that guides us towards a future Victoria that is healthy, equitable, sustainable, and thriving.



What do you want Victoria to be like in 2050?

DELIBERATION PROCESS

The panel had access to detailed information to understand the issues, including data from our state-wide community engagement and an interim engagement report. They also had the opportunity to meet and ask questions of key stakeholders and subject matter experts.

By speaking with experts and each other, the panel developed a deeper understanding of the complex issues around planning for the future of Victoria. They took part in various activities, approaching the challenge from different angles, discussing the challenges, the issues and the possible trade-off's and compromises and listening to each other's diverse perspectives to arrive at a single vision statement.

DECIDING ON THE FINAL VISION

The panel worked hard to find common ground among their diverse group. After careful deliberation, more than 80% of the panel agreed on the vision. This result signalled to us that the vision would likely have broad support with the wider Victorian community.

A LIVING PLAN



As our community changes, so do the places where we live, work, learn and play.

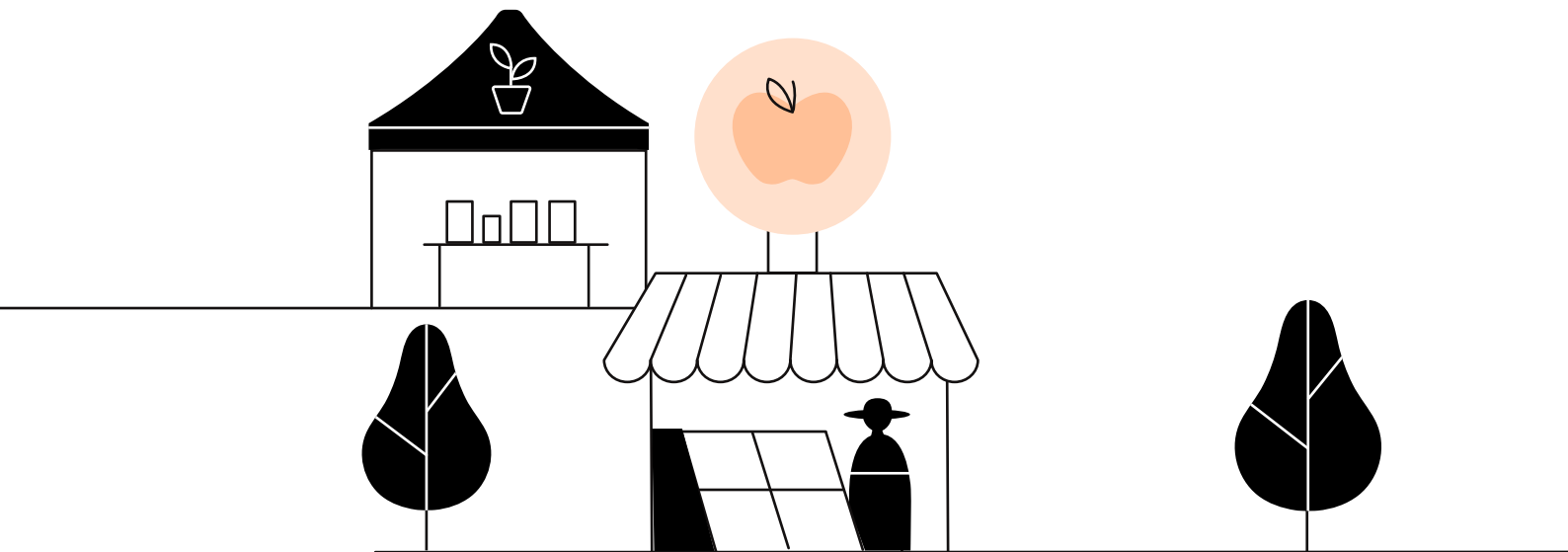
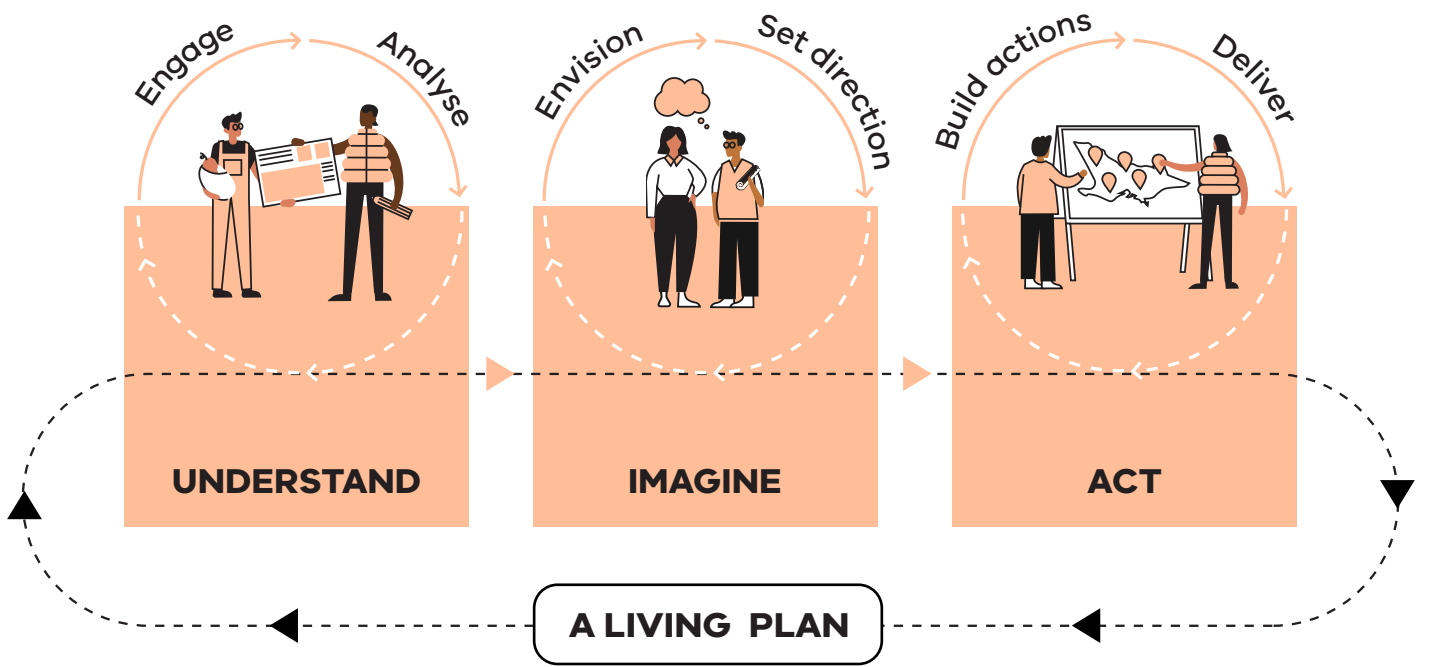
As places evolve, we must continue to make decisions about what's required to meet the changing needs of our community. There are lots of complex puzzle pieces that combine to make a great place. These puzzle pieces need to be organised and managed in a way that considers how they all work together for the benefit of our community.

The plan for Victoria will be a journey towards our collective vision in 2051 and along the way the pieces will start falling into place.

Because our places continue to change, we are developing a living plan – a plan that can be iteratively reviewed to respond to changing circumstance, ensuring Victoria stays on track to reach its vision.

We will continue to work with community as we continue to develop the plan for Victoria.





ACKNOWLEDGEMENTS



We acknowledge the help and support of our many partners in the delivery of this engagement.



RPS, YLab, Cultureverse, Mosaic Lab, CoFutures, 100 Story Building, VCOSS, Council on the Ageing Victoria, DTP Accessible Transport Advisory Committee, Open House Melbourne.

We'd also like to thank the Traditional Owner groups we met with; Barengi Gadjin Land Council Aboriginal Corporation RNTBC, Bunorong Land Council Aboriginal Corporation, Dja Dja Wurrung Clans Aboriginal Corporation,

First Peoples of the Millewa Mallee Aboriginal Corporation, Gunaikurnai Land and Waters Aboriginal Corporation, Gunditj Mirring Traditional Owners Aboriginal Corporation, Taungurung Land and Waters Council Aboriginal Corporation, Wadawurrung Traditional Owners Aboriginal Corporation.

Date January 2025

ISBN 978-0-7311-9340-0

