

Legend

- Southern Winds Offshore Wind Project offshore Study Area
- Southern Winds Offshore Wind Project onshore Study Area
- Local Government boundary
- State Forest, National Parks, Reserves
- VIC coastal and internal waters
- Territorial Sea
- Exclusive Economic Zone (Amended by Perth Treaty 1997)
- Australian Marine Parks**
- Multiple Use Zone (IUCN VI)
- Special Purpose Zone (IUCN VI)
- Roads
- Drainage line

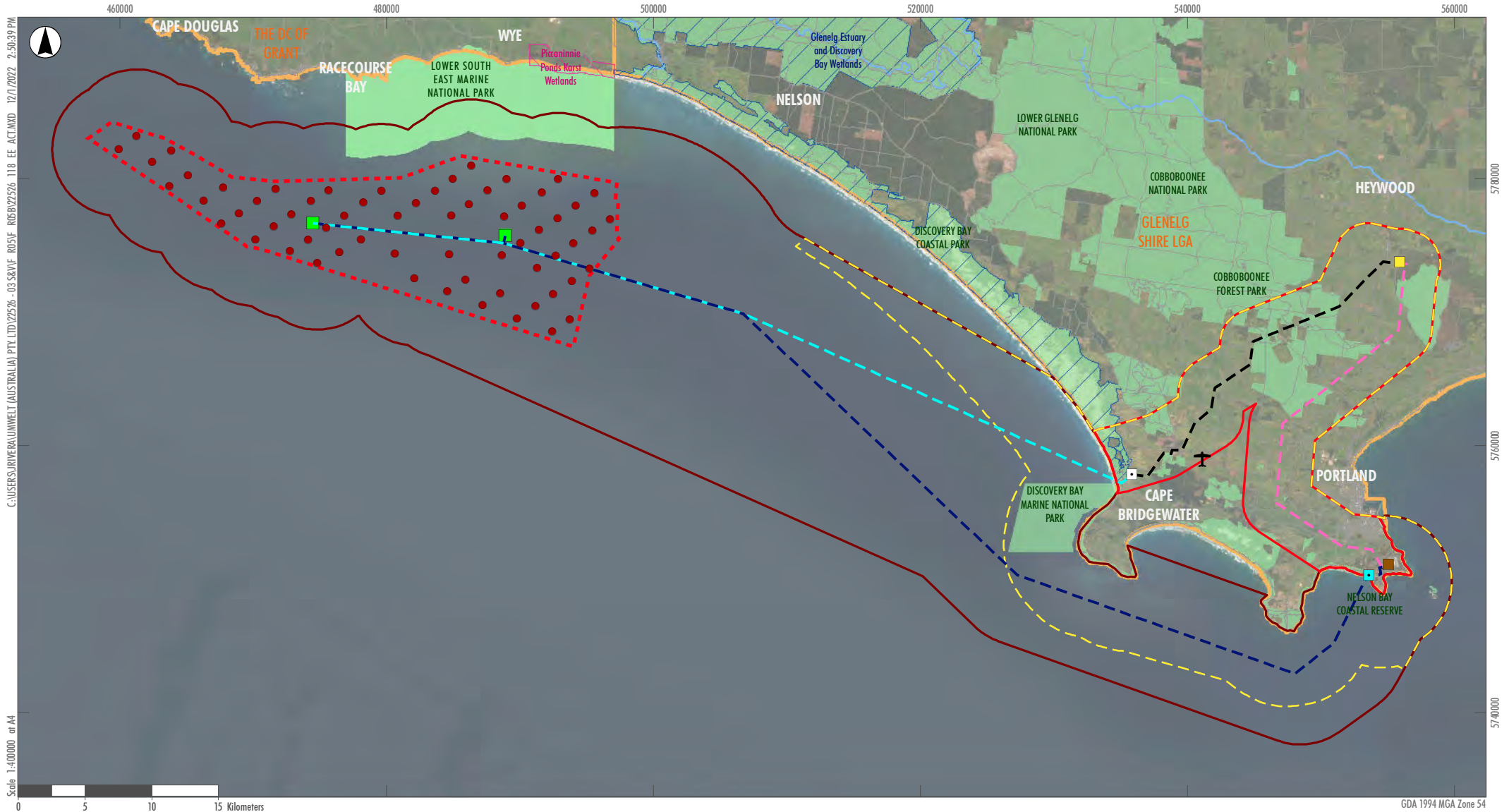
FIGURE 1
Southern Winds Offshore Wind Project Context



Legend

- | | | | | |
|--|---|-------------------------------|--|--|
| Southern Winds Offshore Wind Project offshore Study Area | Southern Winds Offshore Wind Project Area consists of: | Potential turbine layout | Portland Airport | Glenelg Estuary and Discovery Bay Ramsar site |
| Southern Winds Offshore Wind Project onshore Study Area | Southern Winds Offshore Wind Project boundary | Substation | Local Government boundary | Piccaninnie Ponds Karst Wetlands Ramsar site |
| | Onshore transmission route option 1 | Transition joint bay option 1 | State Forest, National Parks, Reserves | VIC Coastal and Internal Waters |
| | Onshore transmission route option 2 | Transition joint bay option 2 | Roads | Territorial Sea |
| | Subsea cabling option 1 | Heywood Terminal Station | Drainage line | Exclusive Economic Zone (Amended by Perth Treaty 1997) |
| | Subsea cabling option 2 | Portland Aluminium Smelter | | |

FIGURE 2
Project Area Layout



C:\USERS\JURIVER\UNWELT (AUSTRALIA) PTY LTD\25256 - 03 384VF - R05\F - R05\B\25256 118 EE ACT\M0 - 12\17\2022 2:50:39 PM

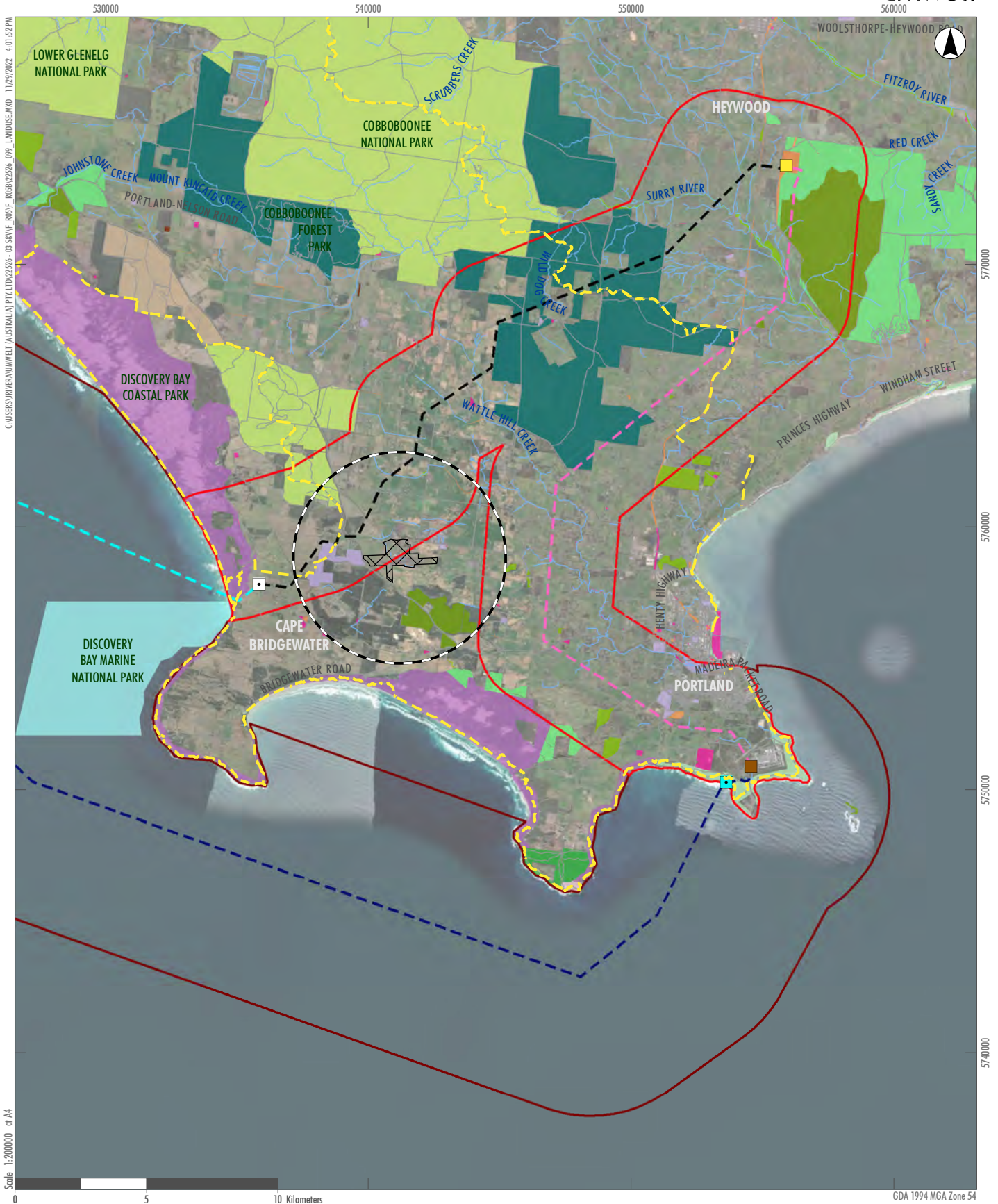
Scale 1:40000 at A4

Legend

- | | | | | |
|--|---|-------------------------------|--|---|
| Southern Winds Offshore Wind Project offshore Study Area | Southern Winds Offshore Wind Project boundary | Potential turbine layout | Portland Airport | Glenelg Estuary and Discovery Bay Ramsar site |
| Southern Winds Offshore Wind Project onshore Study Area | Onshore transmission route option 1 | Transition joint bay option 1 | Local Government boundary | Piccaninnie Ponds Karst Wetlands Ramsar site |
| EE Act Referral Area | Onshore transmission route option 2 | Transition joint bay option 2 | State Forest, National Parks, Reserves | Roads |
| | Subsea cabling option 1 | Heywood terminal station | Drainage line | |
| | Subsea cabling option 2 | Portland aluminium smelter | | |
| | | Substation | | |

FIGURE 3
EE Act Referral Area

Image Source: ESRI Basemap (2022) Data source: VIC Data (2022); DELWP (2022)



Legend

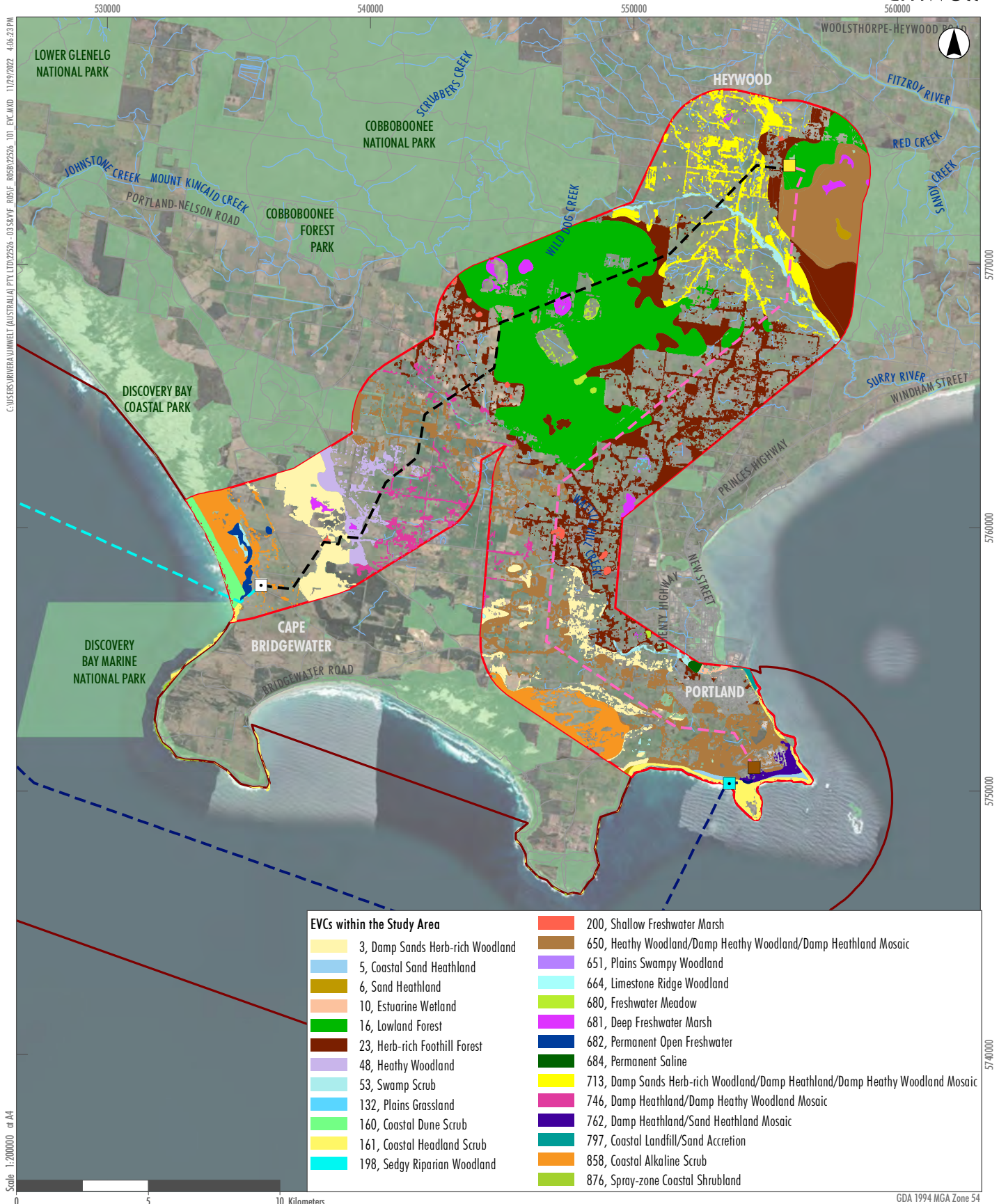
- Southern Winds Offshore Wind Project offshore Study Area
- Southern Winds Offshore Wind Project onshore Study Area
- Southern Winds Offshore Wind Project Area consists of:**
- Onshore transmission route option 1
- Onshore transmission route option 2
- Subsea cabling option 1
- Subsea cabling option 2

- Heywood Terminal Station
- Transition joint bay option 1
- Transition joint bay option 2
- Portland Aluminium Smelter
- Portland Airport
- Inner horizontal surface of the Portland Airport
- Great South West Walk
- Roads
- Drainage line

Public Land

- Coastal Reserve
- Community Use Area
- Earth Resources
- Forest Park
- Lighthouse Reserve
- Marine National Park
- National Park
- Natural Features Reserve
- Nature Conservation Reserve
- NPA Schedule 3 Other Park
- Plantation
- Services and Utilities
- State Forest
- State Park
- Uncategorised Public Land

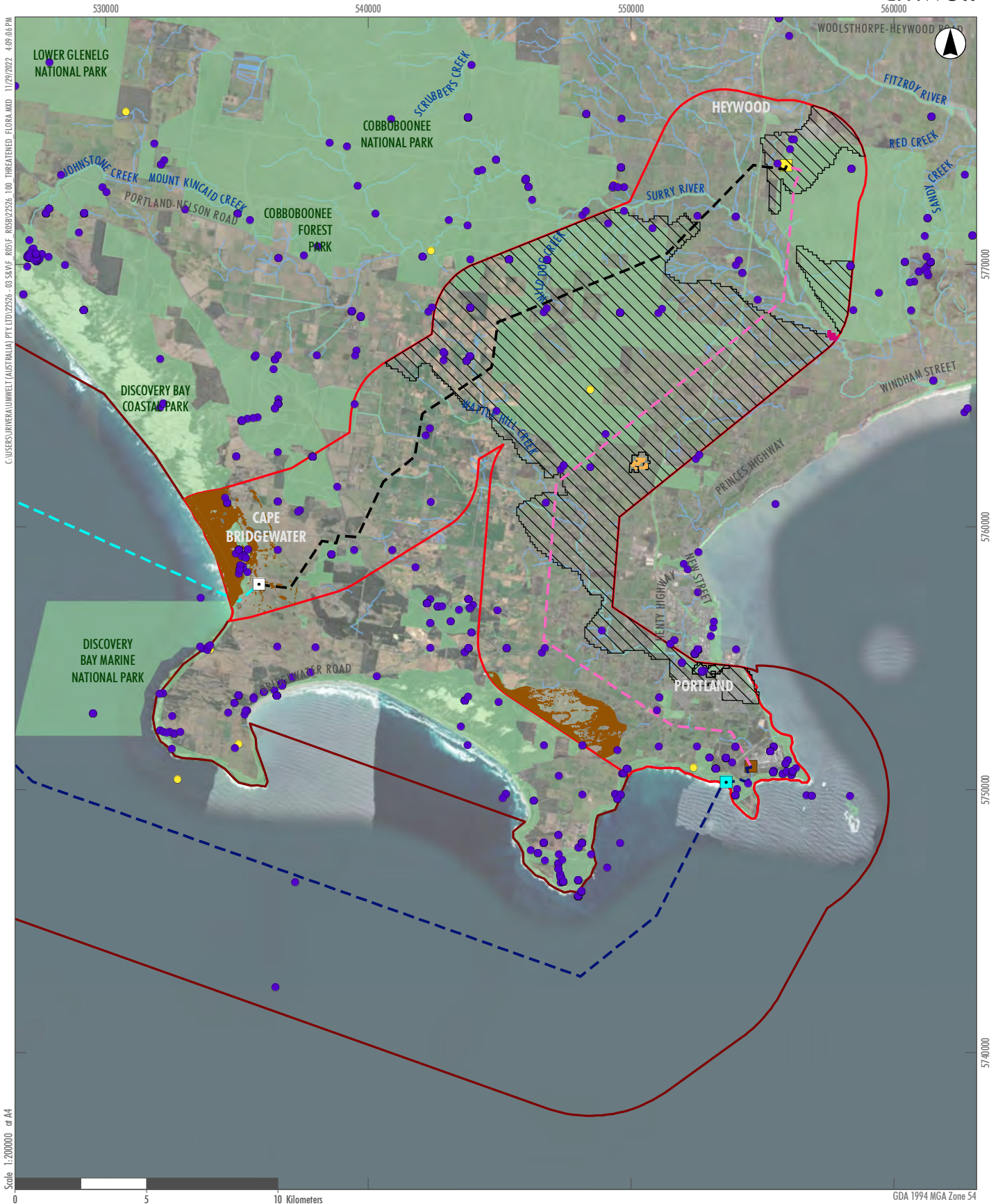
FIGURE 4
Land Use within the Study Area



EVCs within the Study Area	
3, Damp Sands Herb-rich Woodland	200, Shallow Freshwater Marsh
5, Coastal Sand Heathland	650, Heathy Woodland/Damp Heathy Woodland/Damp Heathland Mosaic
6, Sand Heathland	651, Plains Swampy Woodland
10, Estuarine Wetland	664, Limestone Ridge Woodland
16, Lowland Forest	680, Freshwater Meadow
23, Herb-rich Foothill Forest	681, Deep Freshwater Marsh
48, Heathy Woodland	682, Permanent Open Freshwater
53, Swamp Scrub	684, Permanent Saline
132, Plains Grassland	713, Damp Sands Herb-rich Woodland/Damp Heathland/Damp Heathy Woodland Mosaic
160, Coastal Dune Scrub	746, Damp Heathland/Damp Heathy Woodland Mosaic
161, Coastal Headland Scrub	762, Damp Heathland/Sand Heathland Mosaic
198, Sedgy Riparian Woodland	797, Coastal Landfill/Sand Accretion
	858, Coastal Alkaline Scrub
	876, Spray-zone Coastal Shrubland

- Legend**
- Southern Winds Offshore Wind Project offshore Study Area
 - Southern Winds Offshore Wind Project onshore Study Area
 - Southern Winds Offshore Wind Project Area consists of:**
 - Onshore transmission route option 1
 - Onshore transmission route option 2
 - Subsea cabling option 1
 - Subsea cabling option 2
 - Heywood Terminal Station
 - Transition joint bay option 1
 - Transition joint bay option 2
 - Portland Aluminium Smelter
 - Roads
 - Drainage line

FIGURE 5
EVCs



Legend

- Southern Winds Offshore Wind Project offshore Study
- Southern Winds Offshore Wind Project onshore Study
- Southern Winds Offshore Wind Project Area consists of:**
- Onshore transmission route option
- Onshore transmission route option
- Subsea cabling option
- Subsea cabling option
- Heywood Terminal
- Transition joint bay option
- Transition joint bay option
- Portland Aluminium
- Drainage
- EPBC threatened flora
- FFG threatened flora

EPBC threatened flora communities

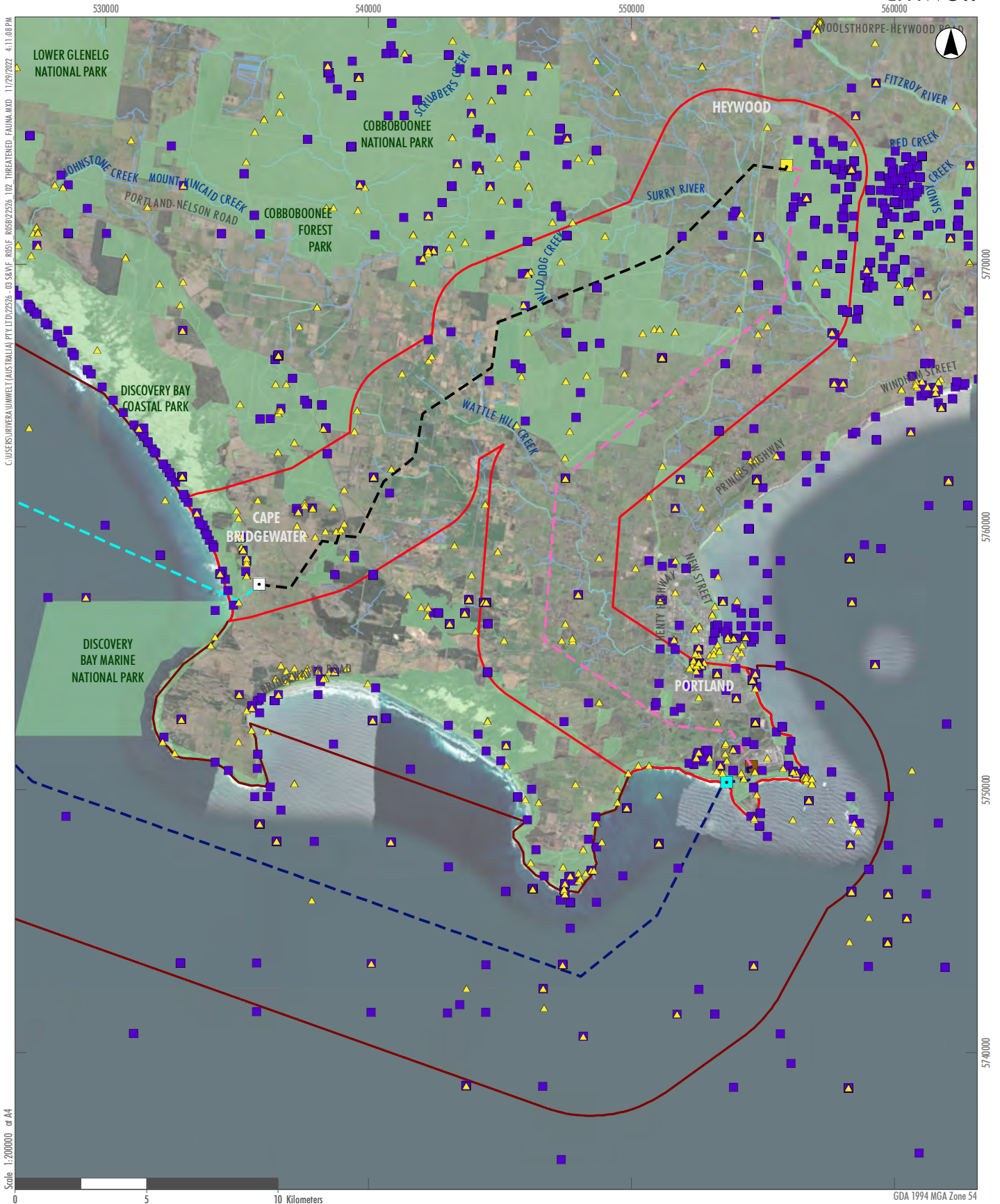
- Assemblages of species associated with open-coast salt-wedge estuaries of western and central Victoria ecological community
- Grassy Eucalypt Woodland of the Victorian Volcanic
- Subtropical and Temperate Coastal

FFG threatened flora communities

- Coastal Moonah
- Western (Basalt) Plains

FIGURE 6

Threatened Flora Records



Legend

- Southern Winds Offshore Wind Project offshore Study Area
- Southern Winds Offshore Wind Project onshore Study Area
- Southern Winds Offshore Wind Project Area consists of:**
- Onshore transmission route option 1
- Onshore transmission route option 2
- Subsea cabling option 1
- Subsea cabling option 2
- Heywood Terminal Station
- Transition joint bay option 1
- Transition joint bay option 2
- Portland Aluminium Smelter
- Roads
- Drainage line
- EPBC threatened fauna species
- FFG threatened fauna species

FIGURE 7

Threatened Fauna Records



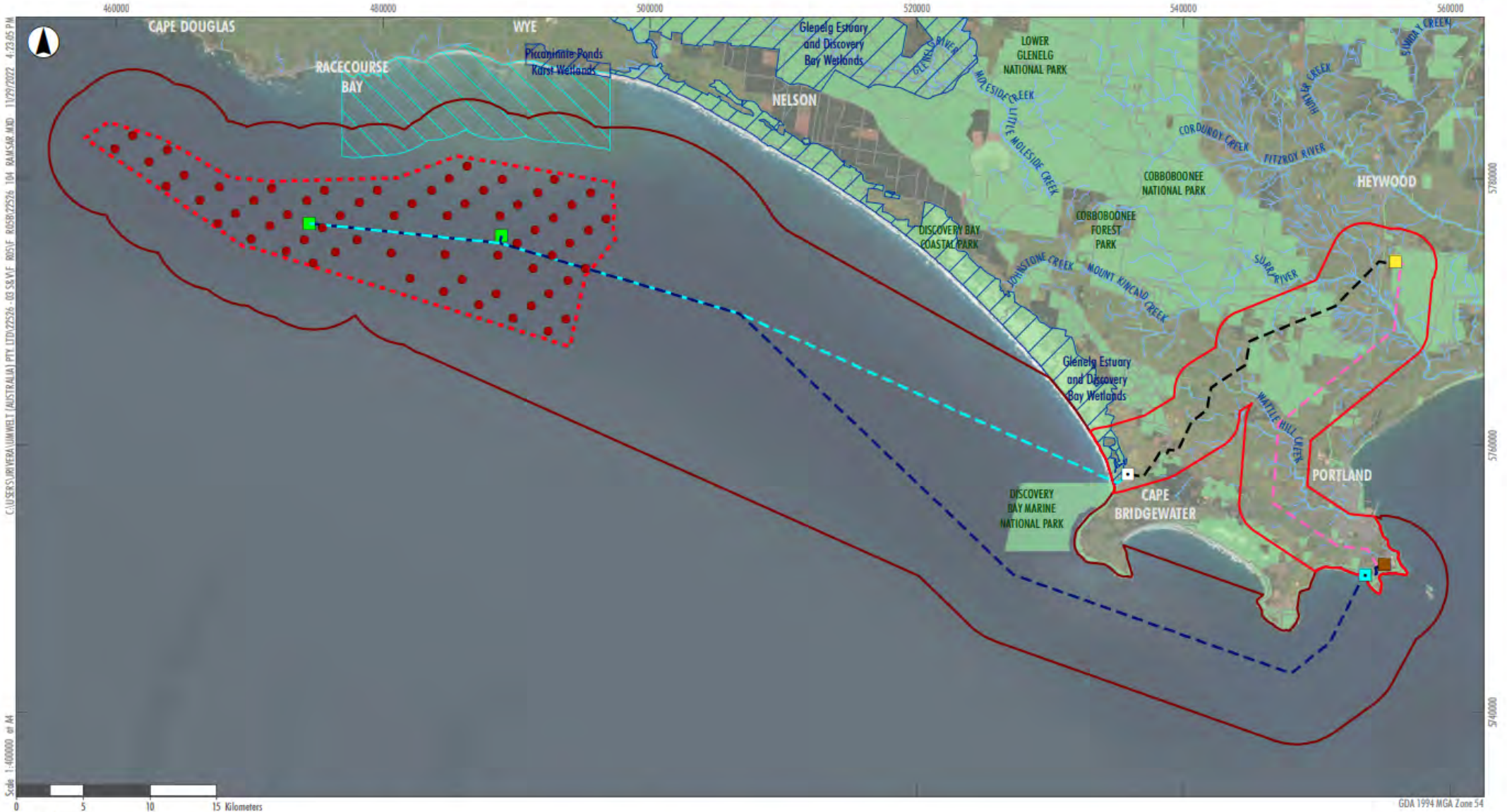
Legend

- Southern Winds Offshore Wind Project offshore Study
- Southern Winds Offshore Wind Project onshore Study
- Southern Winds Offshore Wind Project Area consists of:**
- Onshore transmission route option
- Onshore transmission route option
- Subsea cabling option
- Subsea cabling option

- Heywood Terminal
- Transition joint bay option
- Transition joint bay option
- Portland Aluminium
- Drainage

- EPBC threatened flora communities**
- Assemblages of species associated with open-coast salt-wedge estuaries of western and central Victoria ecological community
- Grassy Eucalypt Woodland of the Victorian Volcanic
- Subtropical and Temperate Coastal
- FFG threatened flora communities**
- Coastal Moonah
- Western (Basalt) Plains

FIGURE 8
Threatened Ecological Communities



- Legend**
- Southern Winds Offshore Wind Project offshore Study Area
 - Southern Winds Offshore Wind Project onshore Study Area
 - Southern Winds Offshore Wind Project boundary
 - Onshore transmission route option 1
 - Onshore transmission route option 2
 - Subsea cabling option 1
 - Subsea cabling option 2
 - Potential turbine layout
 - Heywood Terminal Station
 - Transition joint bay option 1
 - Transition joint bay option 2
 - Portland Aluminium Smelter
 - Substation
 - State Forest, National Parks, Reserves
 - Ramsar Site
 - Lower South East Marine Park
 - Roads
 - Drainage line

FIGURE 9
Ramsar Wetlands

Image Source: ESRI Basemap (2022) Data source: VIC Data (2022), DELWP (2022)



C:\USERS\IVERA\UMWELT\AUSTRALIA\PTL\LTD\2226-05\SRVF_R05\F_R05B122526-05_HYDROLOGY.MXD 11/29/2022 4:44:29 PM
 Scale 1:300000 at A4

- Legend**
- Southern Winds Offshore Wind Project offshore Study Area
 - Southern Winds Offshore Wind Project onshore Study Area
 - Southern Winds Offshore Wind Project Area consists of:**
 - Onshore transmission route option 1
 - Onshore transmission route option 2
 - Subsea cabling option 1
 - Subsea cabling option 2
 - Ramsar Site
 - DELWP Important Wetlands
 - State Forest, National Parks, Reserves
 - Heywood Terminal Station
 - Transition joint bay option 1
 - Transition joint bay option 2
 - Portland Aluminium Smelter
 - Roads
 - Drainage line

GDA 1994 MGA Zone 54

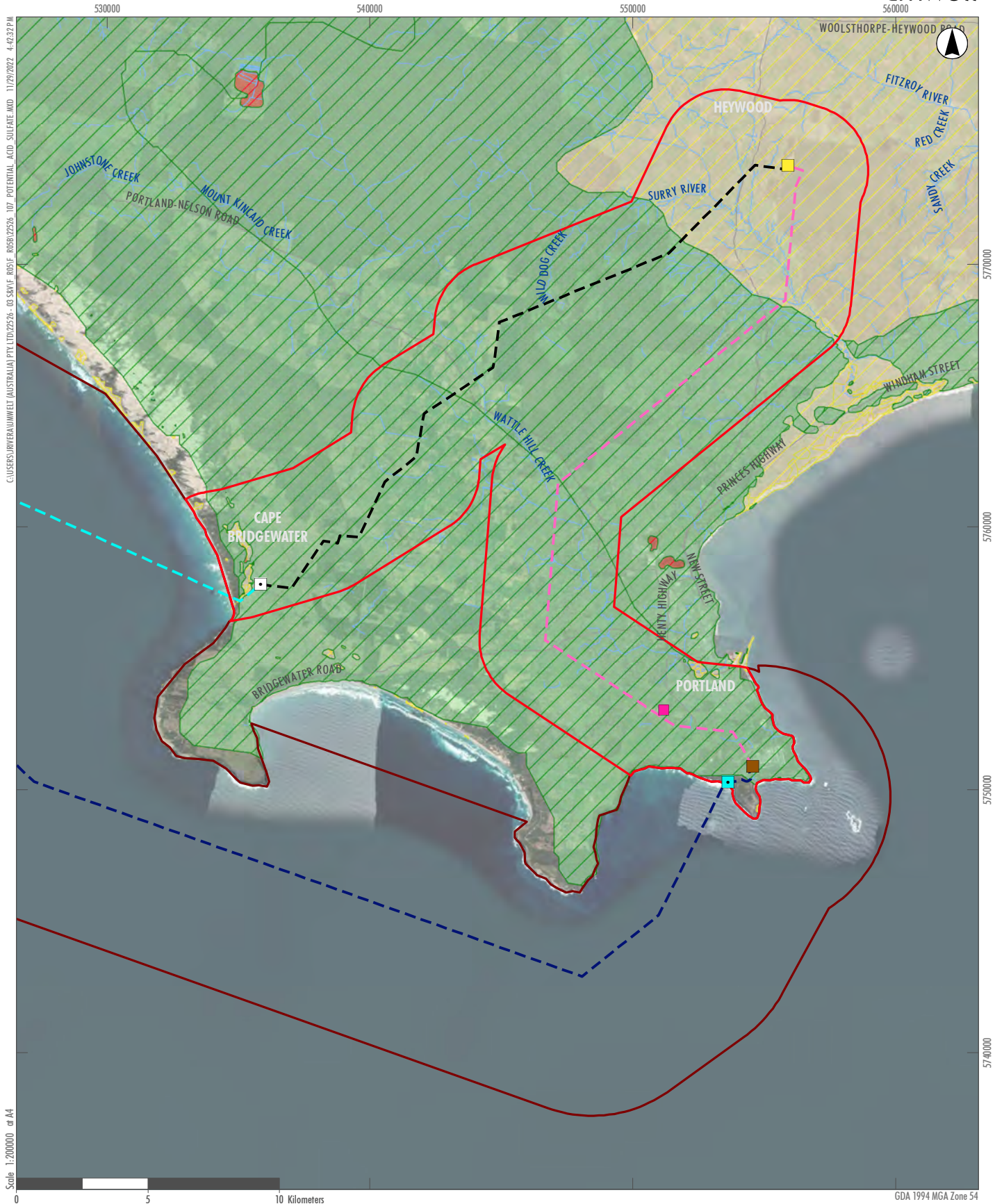
FIGURE 10
Hydrology within the Study Area



C:\USERS\URIVERA\UMWELT (AUSTRALIA) PTY LTD\25256 - 03 38\WF ROS\F ROS\25256_106_COASTAL_ACID_SULFATE.MXD 11/29/2022 4:25:46 PM
 Scale 1:125000 at A4

- Legend**
- Southern Winds Offshore Wind Project offshore Study Area
 - Southern Winds Offshore Wind Project onshore Study Area
 - Prospective coastal acid sulfate soils
 - State Forest, National Parks, Reserves
 - Onshore transmission route option 1
 - Onshore transmission route option 2
 - Subsea cabling option 1
 - Subsea cabling option 2
 - Transition joint bay option 1
 - Transition joint bay option 2
 - Portland Aluminium Smelter
 - Roads
 - Drainage line

FIGURE 11
Coastal Acid Sulfate Soils



- Scale 1:200000 or A4
- 0 5 10 Kilometers
- GDA 1994 MGA Zone 54
- | | | |
|--|---|---|
| <ul style="list-style-type: none"> Southern Winds Offshore Wind Project offshore Study Area Southern Winds Offshore Wind Project onshore Study Area <p>Southern Winds Offshore Wind Project Area consists of:</p> <ul style="list-style-type: none"> Onshore transmission route option 1 Onshore transmission route option 2 Subsea cabling option 1 Subsea cabling option 2 | <ul style="list-style-type: none"> Heywood Terminal Station Transition joint bay option 1 Transition joint bay option 2 Portland Aluminium Smelter Historic portland landfill Roads Drainage line | <p>National ASS Atlas</p> <ul style="list-style-type: none"> A4 High Probability/Very Low Confidence B4 Low Probability/Very Low Confidence C4 Extremely Low Probability/Very Low Confidence A - High Probability/Confidence Unknown B - Low Probability/Confidence Unknown C - Extremely Low Probability/Confidence Unknown |
|--|---|---|

FIGURE 12
Potential Acid Sulfate Soils

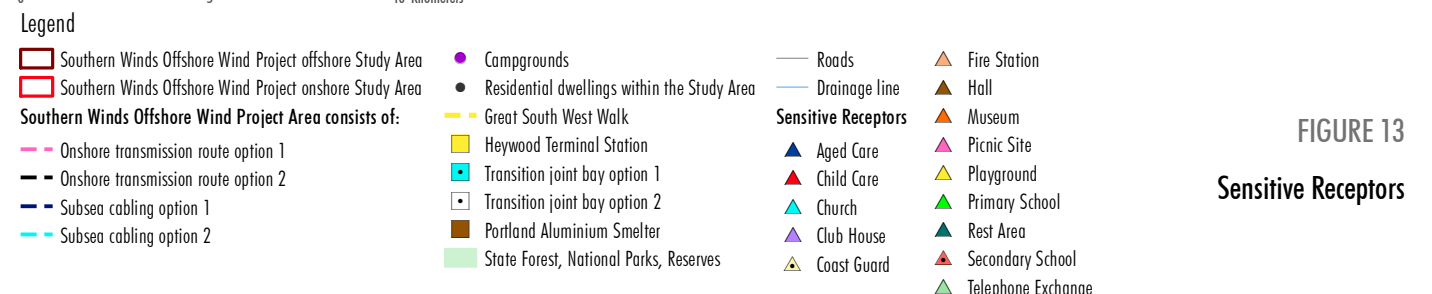
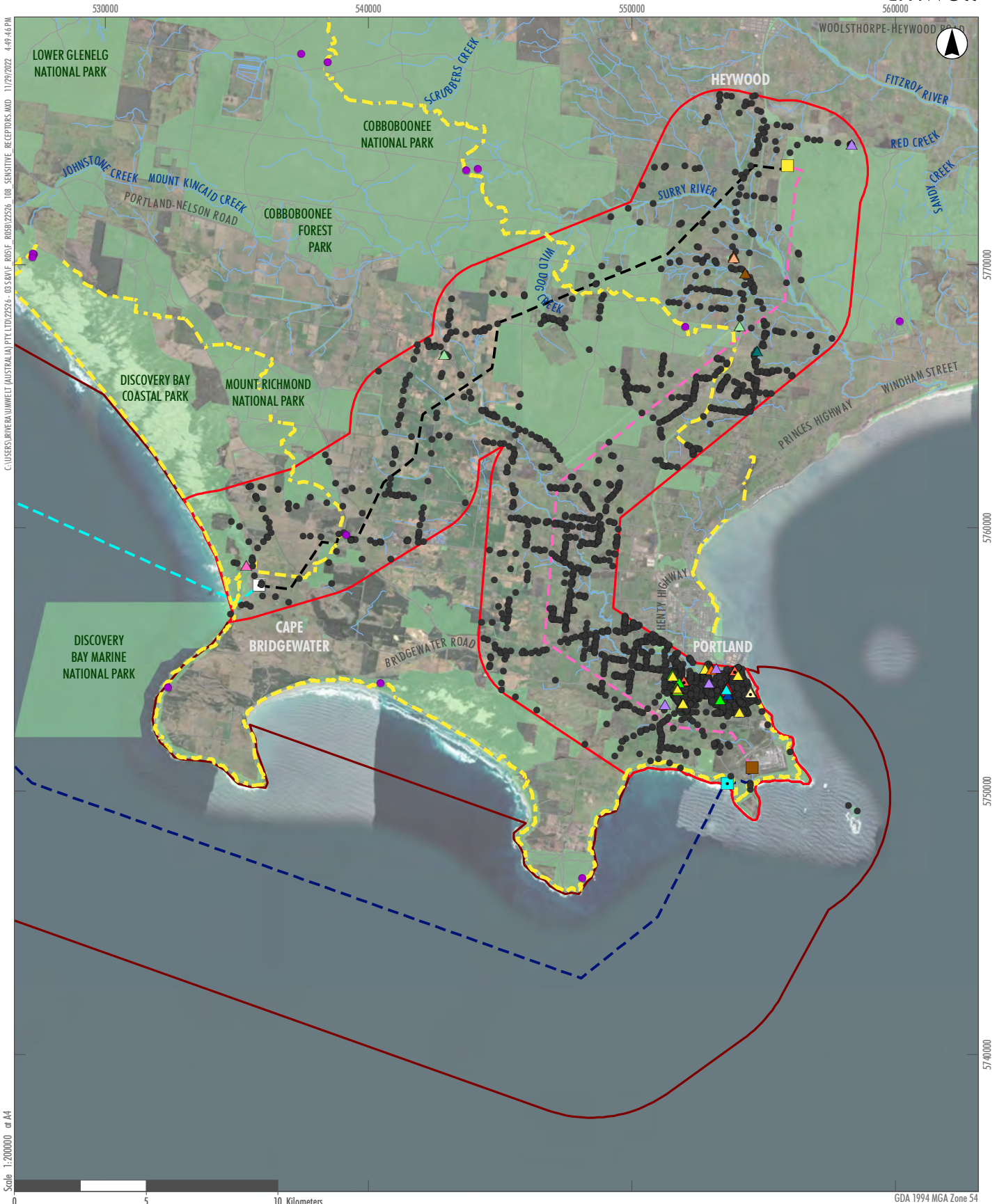


FIGURE 13
Sensitive Receptors

Image Source: ESRI Basemap (2022) Data source: VIC Data (2022)

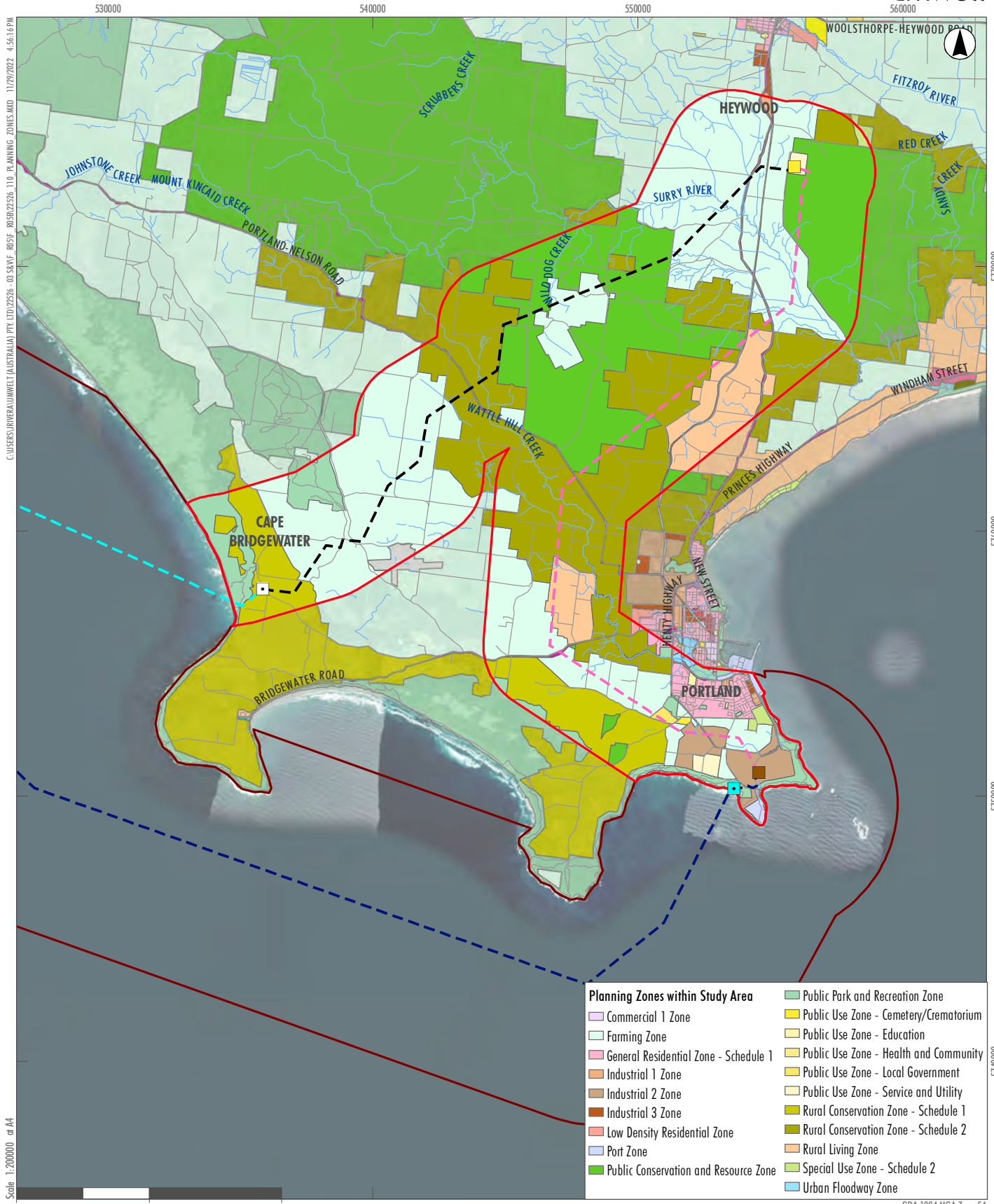


Legend

- Southern Winds Offshore Wind Project offshore Study Area
- Southern Winds Offshore Wind Project onshore Study Area
- Southern Winds Offshore Wind Project Area consists of:**
- Onshore transmission route option 1
- Onshore transmission route option 2
- Subsea cabling option 1
- Subsea cabling option 2
- Heywood Terminal Station
- Transition joint bay option 1
- Transition joint bay option 2
- Portland Aluminium Smelter
- Local bus routes
- State Forest, National Parks, Reserves
- Roads
- Drainage line
- Portland Airport
- Inner horizontal surface of the Portland Airport

FIGURE 14

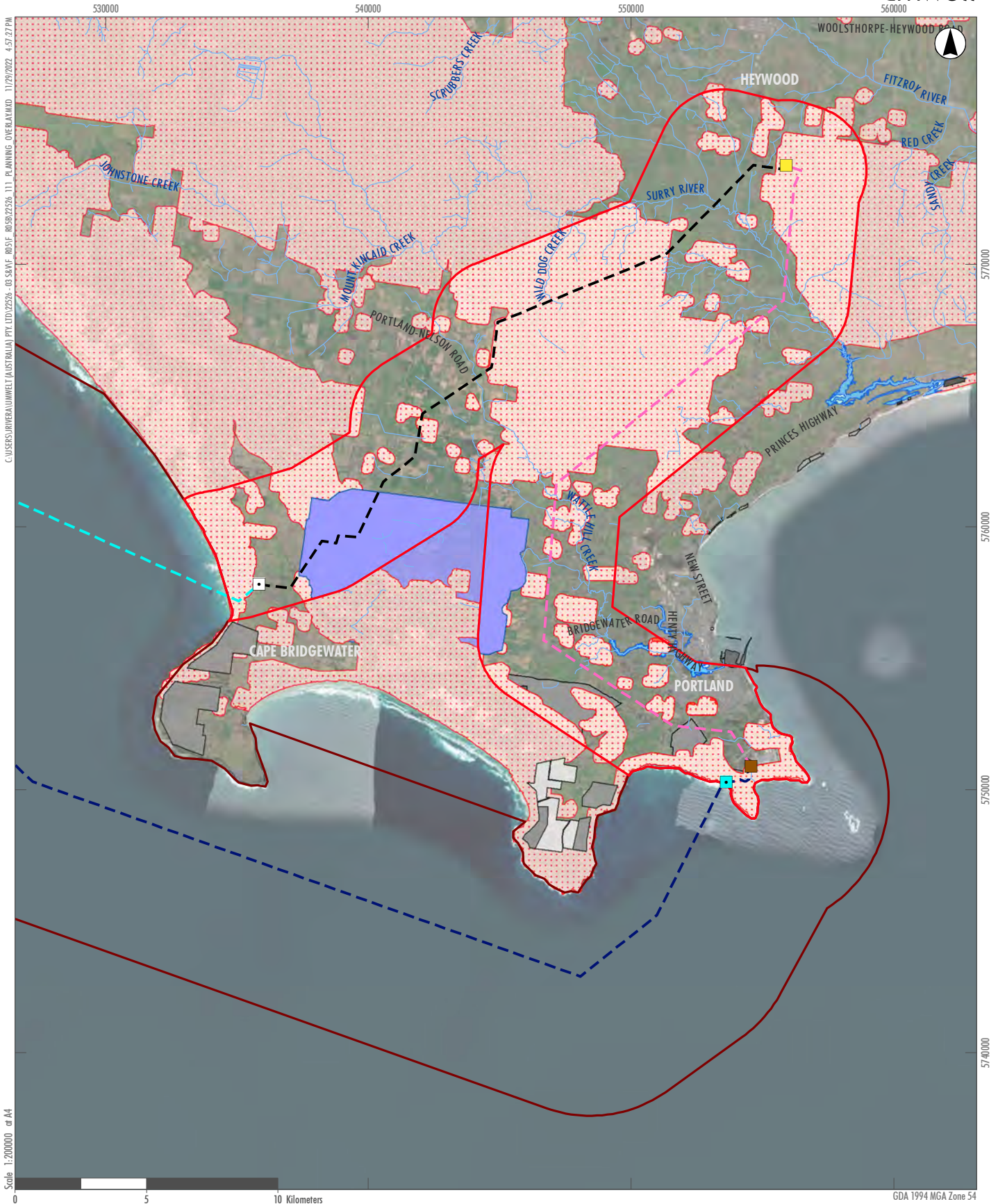
Local Transport Network



Planning Zones within Study Area	
Commercial 1 Zone	Public Park and Recreation Zone
Farming Zone	Public Use Zone - Cemetery/Crematorium
General Residential Zone - Schedule 1	Public Use Zone - Education
Industrial 1 Zone	Public Use Zone - Health and Community
Industrial 2 Zone	Public Use Zone - Local Government
Industrial 3 Zone	Public Use Zone - Service and Utility
Low Density Residential Zone	Rural Conservation Zone - Schedule 1
Port Zone	Rural Conservation Zone - Schedule 2
Public Conservation and Resource Zone	Rural Living Zone
	Special Use Zone - Schedule 2
	Urban Floodway Zone

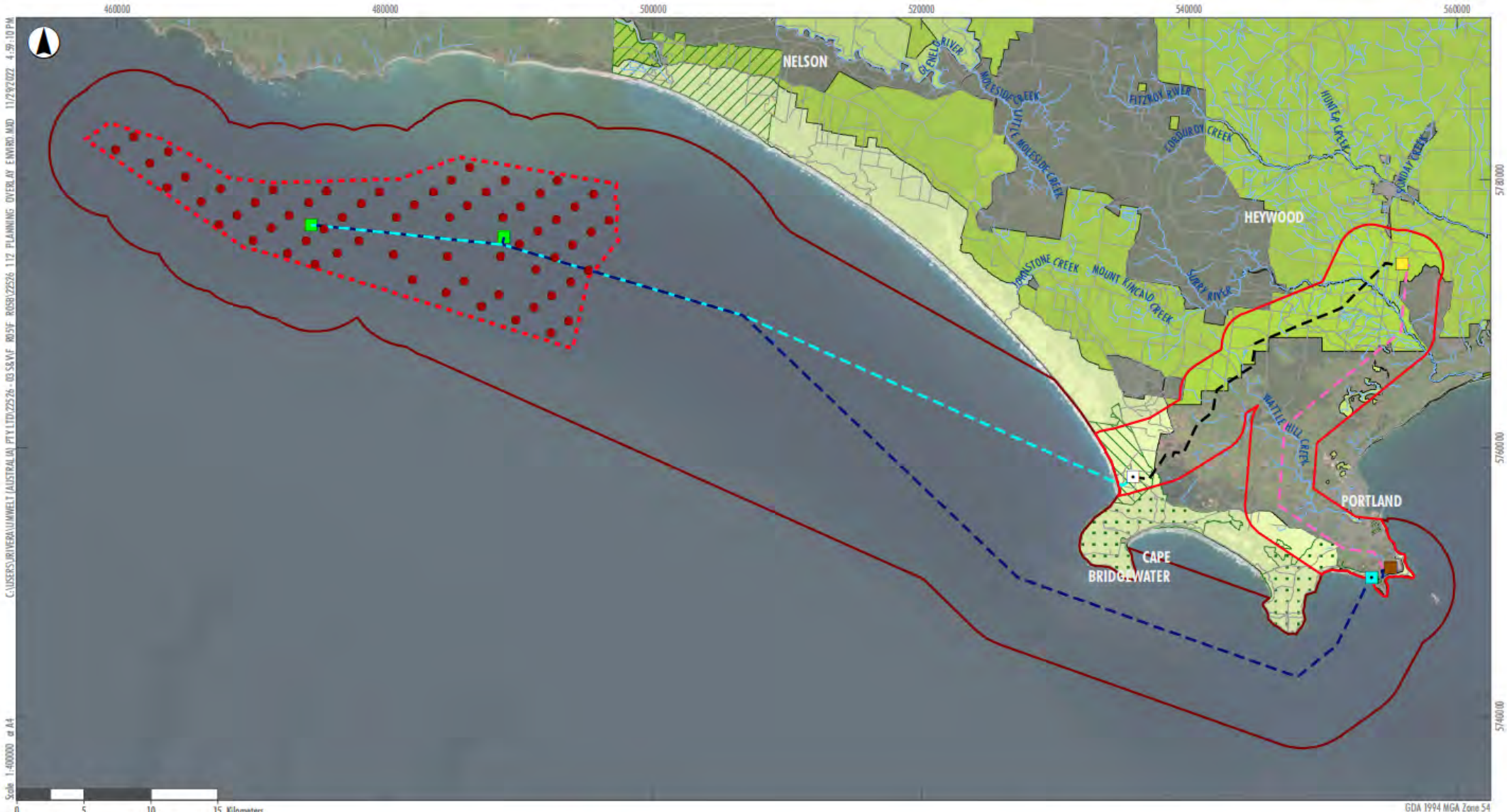
- Legend
- ▭ Southern Winds Offshore Wind Project offshore Study Area
 - ▭ Southern Winds Offshore Wind Project onshore Study Area
 - ▭ Heywood Terminal Station
 - ▭ Transition joint bay option 1
 - ▭ Transition joint bay option 2
 - ▭ Onshore transmission route option 1
 - ▭ Onshore transmission route option 2
 - ▭ Portland Aluminium Smelter
 - ▭ Subsea cabling option 1
 - ▭ Subsea cabling option 2
 - Roads
 - Drainage line

FIGURE 15
Planning Zones



- | | | |
|---|-------------------------------|--|
| Southern Winds Offshore Wind Project offshore Study Area | Heywood Terminal Station | Land Management and Other Planning Overlays within the Study Area |
| Southern Winds Onshore Wind Project onshore Study Area | Transition joint bay option 1 | |
| Southern Winds Offshore Wind Project Area consists of: | | |
| Onshore transmission route option 1 | Portland Aluminium Smelter | Airport Environs Overlay (AE02) |
| Onshore transmission route option 2 | Roads | Bushfire Management Overlay |
| Subsea cabling option 1 | Drainage line | Bushfire Management Overlay - Schedule 1 |
| Subsea cabling option 2 | | Floodway Overlay |
| | | Land Subject to Inundation Overlay |
| | | Specific Controls Overlay - Schedule 5 |
| | | Specific Controls Overlay - Schedule 6 |

FIGURE 16
Planning Overlays

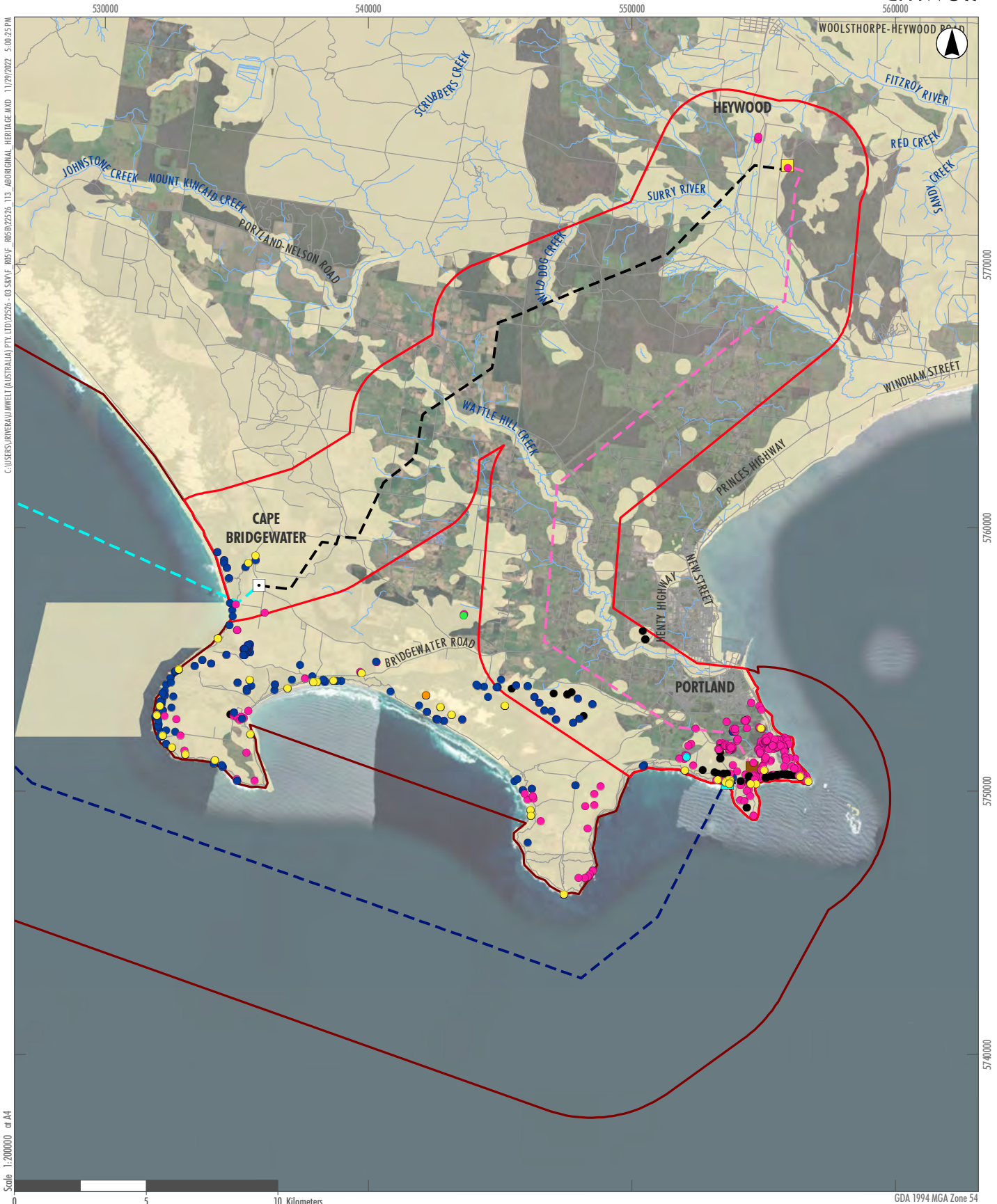


C:\USERS\BRIAN\umwelt\AUSTRALIA\PTX\LD\252526-03\S&WF\03SF\03SF-ROSE\252526-112\PLANNING_OVERLAY_ENVIRO.MXD 11/29/2022 4:59:10 PM
 Scale: 1:400000 at A4

Legend Southern Winds Offshore Wind Project offshore Study Area Southern Winds Offshore Wind Project onshore Study Area		Southern Winds Offshore Wind Project Area consists of: Southern Winds Offshore Wind Project boundary Onshore transmission route option 1 Onshore transmission route option 2 Subsea cabling option 1 Subsea cabling option 2		Potential turbine layout Substation Heywood Terminal Station Transition joint bay option 1 Transition joint bay option 2 Portland Aluminium Smelter		Environment and Landscape Planning Overlays Environmental Significance Overlay - Schedule 1 Environmental Significance Overlay - Schedule 2 Environmental Significance Overlay - Schedule 3		Roads Drainage line Environmental Significance Overlay - Schedule 4 Environmental Significance Overlay - Schedule 5 Environmental Significance Overlay - Schedule 6 Significant Landscape Overlay - Schedule 1 Significant Landscape Overlay - Schedule 2 Significant Landscape Overlay - Schedule 3	
--	--	--	--	--	--	---	--	---	--

FIGURE 17
Planning Overlays

Image Source: ESRI Basemap (2022) Data source: VIC Data (2022)



C:\USERS\JURIVERA\UMWELT (AUSTRALIA) PTY. LTD\22526-03 SKRVF-R03\F-R03\B\22526-113-ABORIGINAL-HERITAGE.MXD 11/29/2022 5:00:25 PM

Scale 1:200000 or A4



FIGURE 18
Aboriginal Cultural Heritage



Scale 1:200000 or A4

GDA 1994 MGA Zone 54

Legend

- Southern Winds Offshore Wind Project offshore Study Area
- Southern Winds Offshore Wind Project onshore Study Area
- Southern Winds Offshore Wind Project Area consists of:**
- Onshore transmission route option 1
- Onshore transmission route option 2
- Subsea cabling option 1
- Subsea cabling option 2
- Heywood Terminal Station
- Transition joint bay option 1
- Transition joint bay option 2
- Portland Aluminium Smelter
- Drainage line
- Future Act Notices
- Determinations**
- In effect - Finalised
- Indigenous Land Use Agreements**
- ILUA registered

FIGURE 19
Native Title



Legend

- Southern Winds Offshore Wind Project offshore Study Area
- Southern Winds Offshore Wind Project onshore Study Area
- Southern Winds Offshore Wind Project Area consists of:**
- Onshore transmission route option 1
- Onshore transmission route option 2
- Subsea cabling option 1
- Subsea cabling option 2
- Heywood Terminal Station
- Transition joint bay option 1
- Transition joint bay option 2
- Portland Aluminium Smelter
- Victorian Heritage Register
- Heritage Overlay
- Victorian Heritage Inventory
- Roads
- Drainage line
- ▲ Shipwrecks

FIGURE 20

Non-Aboriginal Cultural Heritage within the Onshore Study Area

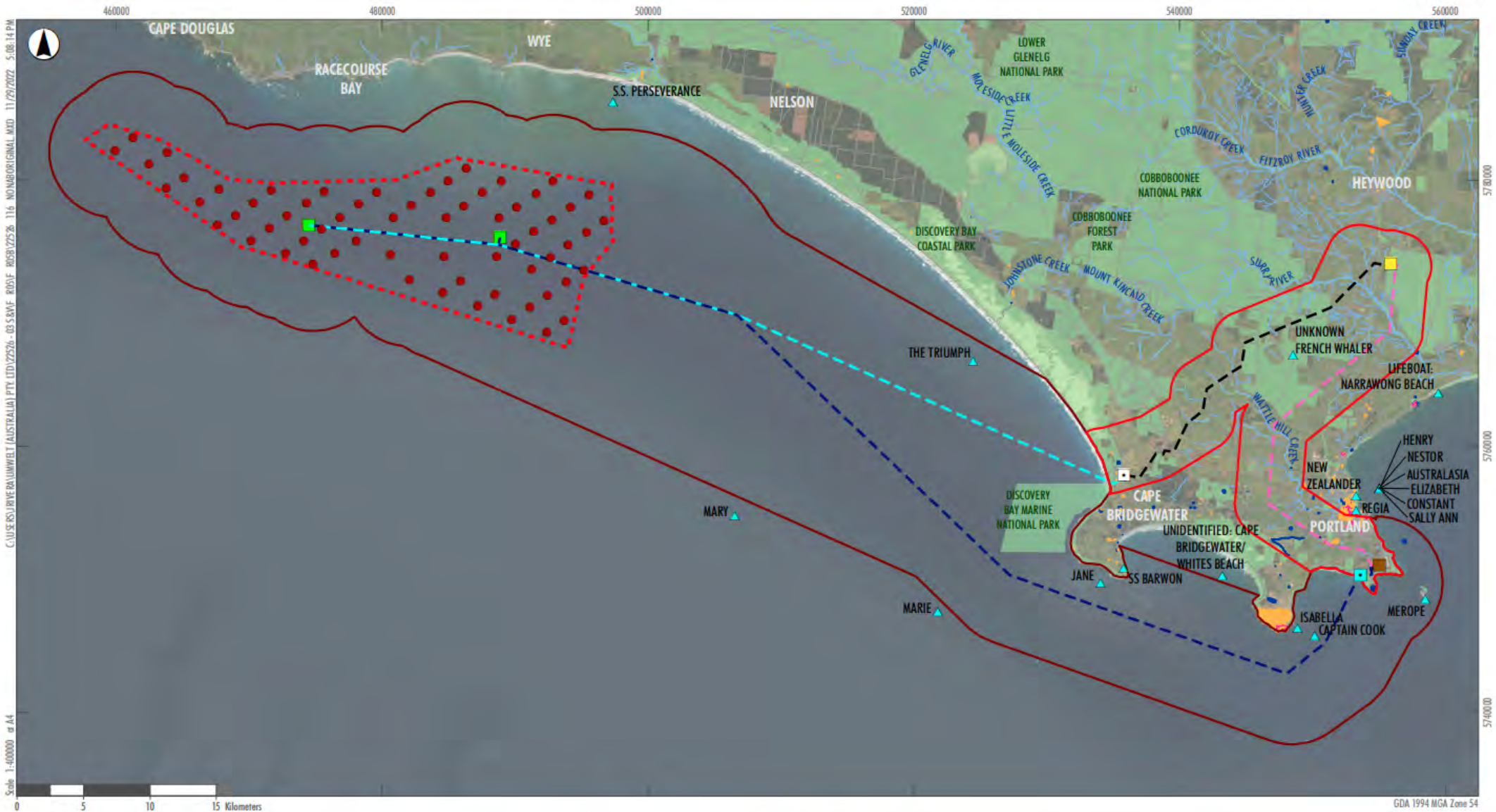
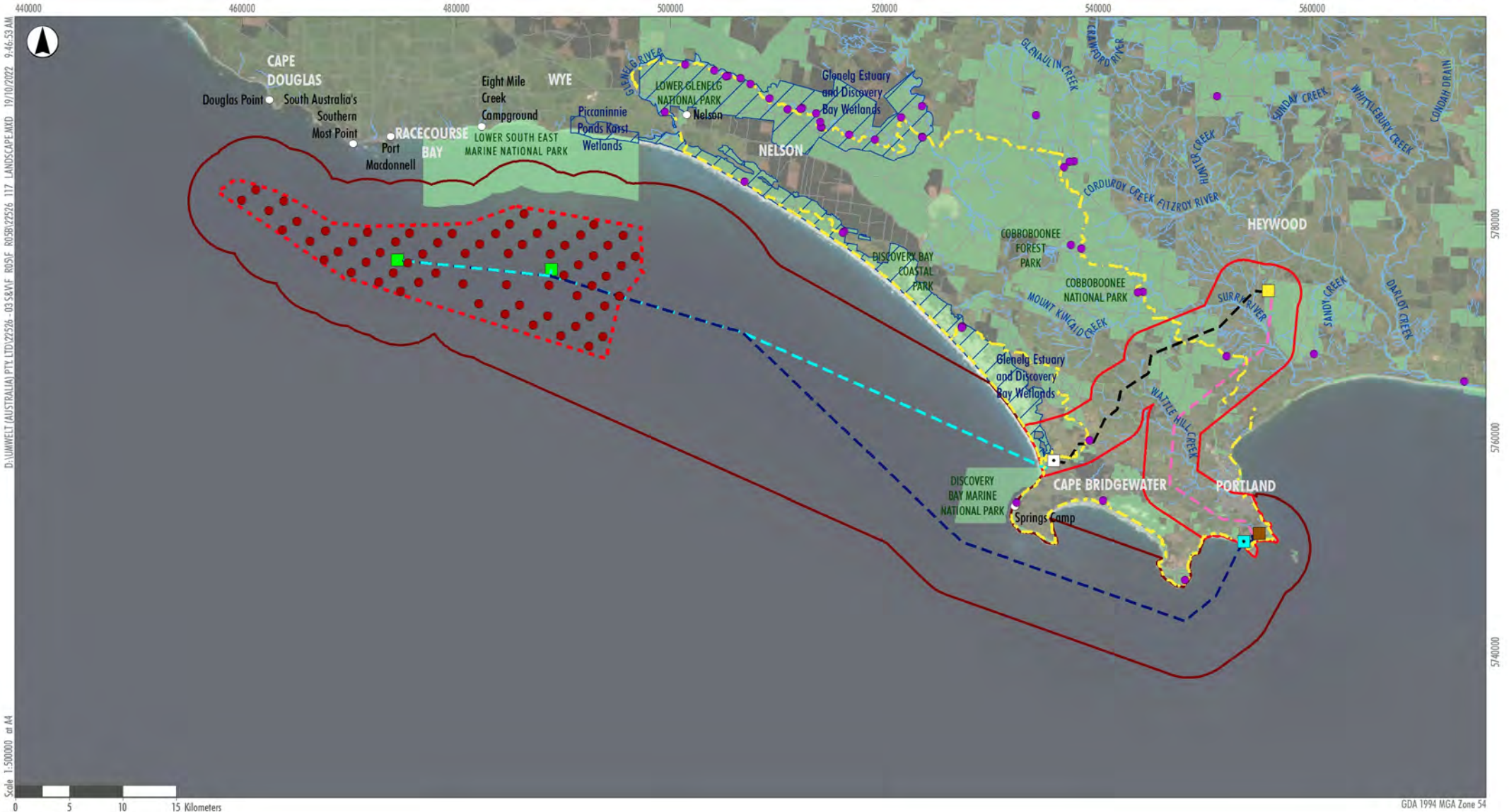


FIGURE 21
Non-Aboriginal Cultural Heritage
within the Offshore Study Area

Data source: VIC Data (2022)



Scale 1:500000 at A4

0 5 10 15 Kilometers

Legend

- | | | | | |
|--|---|-------------------------------|--|-----------------------|
| Southern Winds Offshore Wind Project offshore Study Area | Southern Winds Offshore Wind Project Area consists of: | Potential turbine layout | State Forest, National Parks, Reserves | Great South West Walk |
| Southern Winds Offshore Wind Project onshore Study Area | Southern Winds Offshore Wind Project boundary | Heywood terminal station | Ramsar Site | Campgrounds |
| Onshore transmission route option 1 | Onshore transmission route option 2 | Transition joint bay option 1 | Roads | Drainage line |
| Onshore transmission route option 2 | Subsea cabling option 1 | Transition joint bay option 2 | Portland aluminium smelter | |
| Subsea cabling option 1 | Subsea cabling option 2 | Substation | | |

Image Source: ESRI Basemap (2022) Data source: VIC Data (2022); DELWP (2022)

FIGURE 22
Landscape and Visual Existing Conditions