

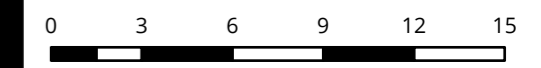
Legend

- Study Area
- Cable route
- Wind Farm Area
- RAMSAR site
- Park/Reserve

Wetlands

- 2 - Freshwater meadow
- 3 - Shallow freshwater marsh
- 4 - Deep freshwater marsh
- 5 - Permanent open freshwater
- 6 - Semi-permanent saline
- 7 - Permanent saline

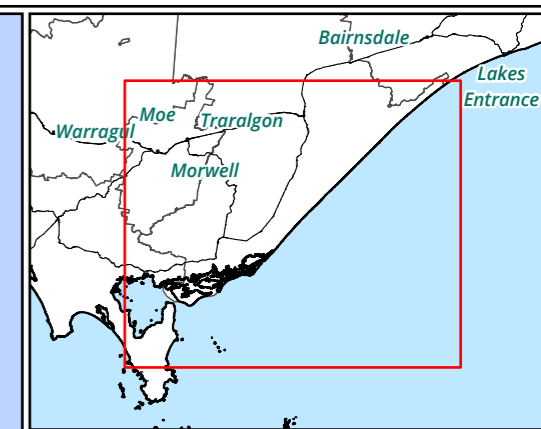
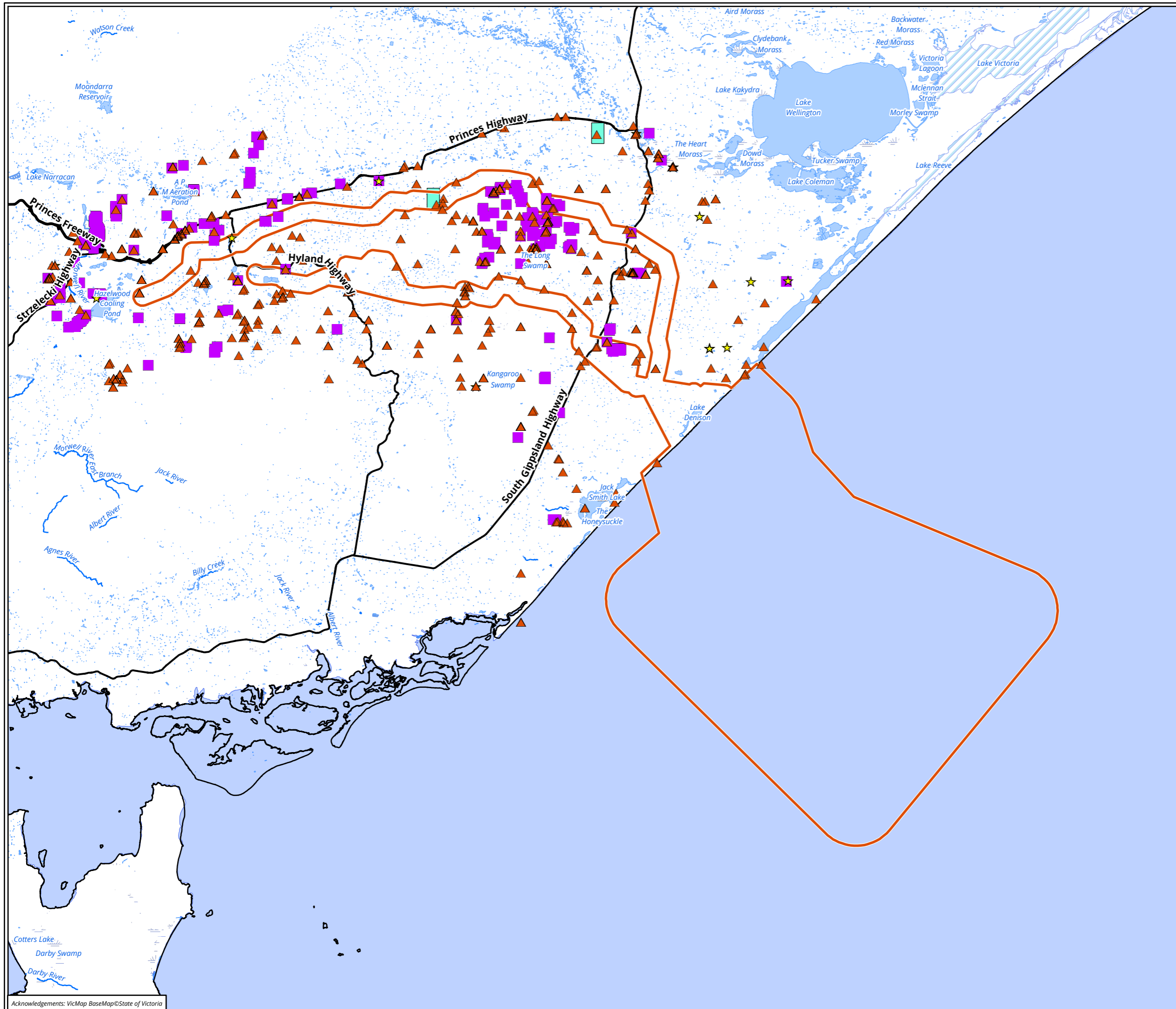
Figure 3.10 - Parks, reserves and wetlands in the Study Area



Scale: 1:250,000 @ A3
 Coordinate System: GDA 1994 MGA Zone 55

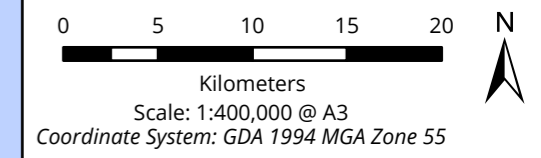


Matter: 37595,
 Date: 05 October 2022,
 Prepared for: JB, Prepared by: MK, Last edited by: sblades
 Layout: 37595_F3_ParksandWater
 Project: P:\37500s\37595\Mapping\
 37595_GG_OffshoreWind.aprx



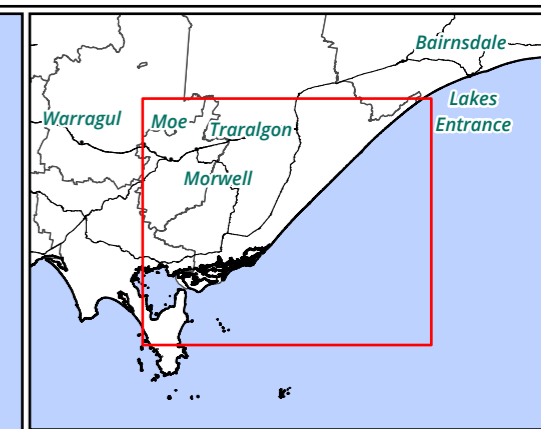
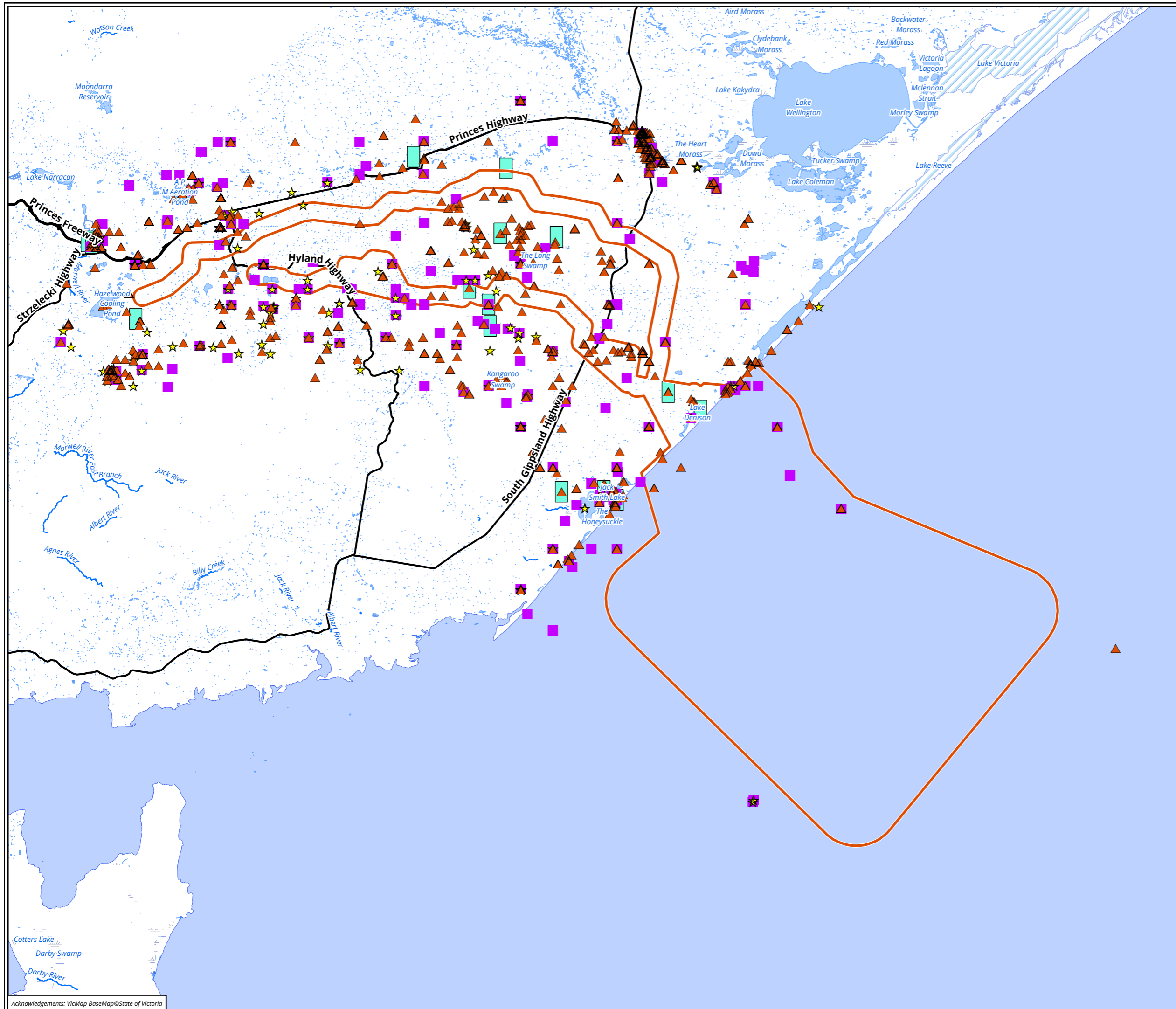
- Legend**
- Study Area
 - 10km search area
- Threatened flora record (VBA)**
- ▲ EPBC listed
 - ★ FFG listed
 - EPBC and FFG listed
 - Restricted flora record

Figure 4 Threatened flora records



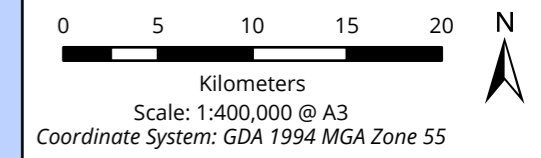
Matter: 37595,
 Date: 04 October 2022,
 Prepared for: JB, Prepared by: MK, Last edited by: sblades
 Layout: 37595_F4_Flora
 Project: P:\37500s\37595\Mapping\
 37595_GG_OffshoreWind.aprx

Acknowledgements: VicMap BaseMap © State of Victoria



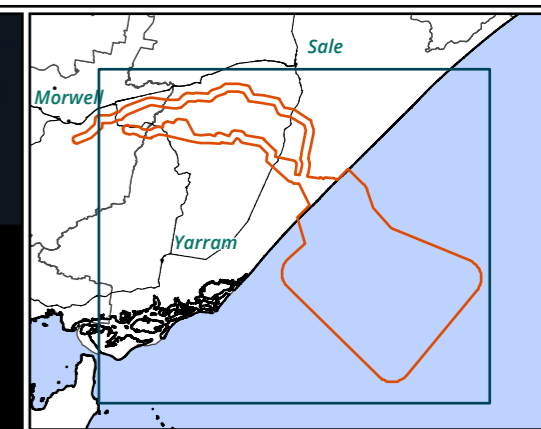
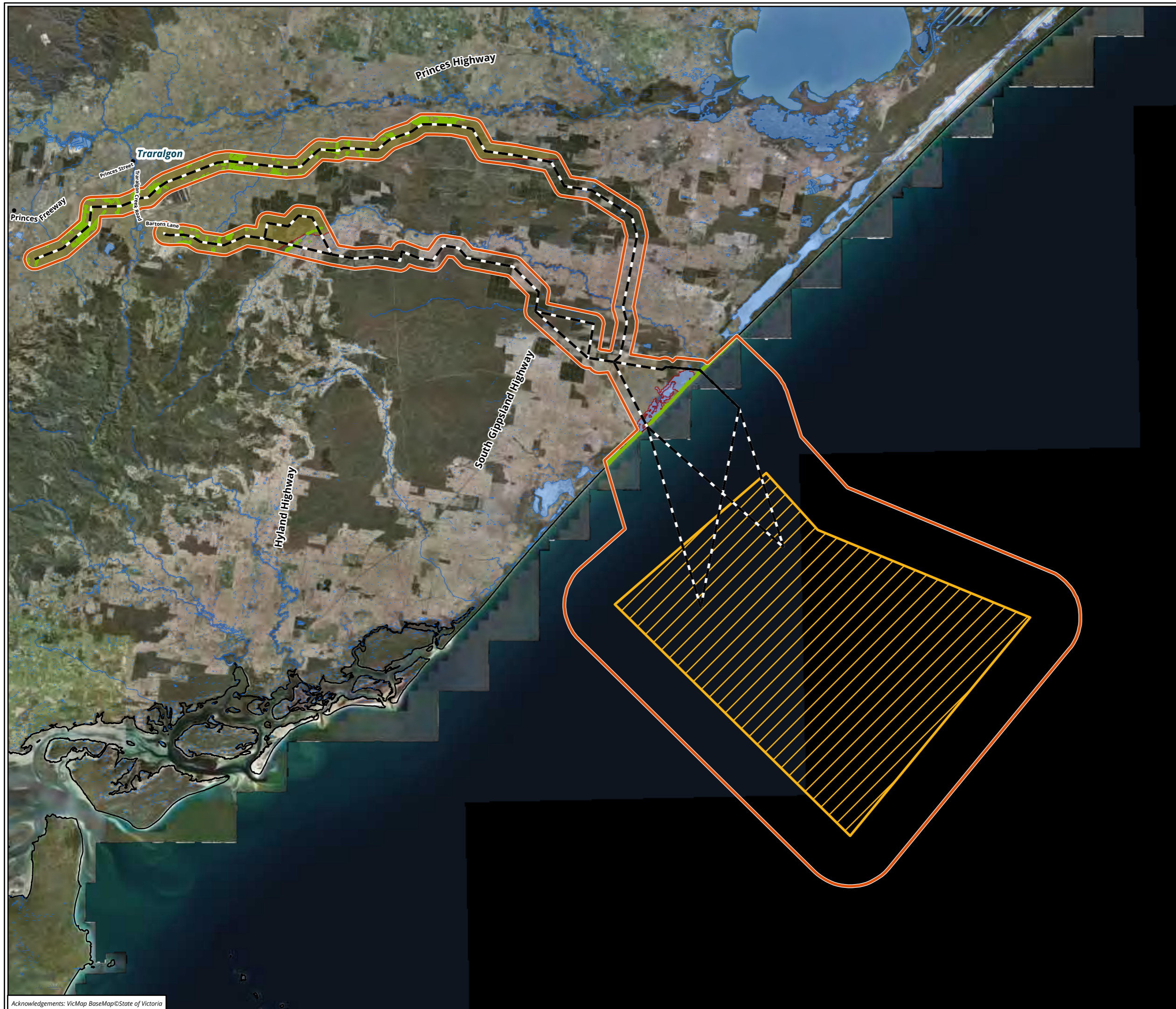
- Legend**
- Study Area
 - 10km search area
- Threatened fauna records (VBA)**
- ▲ EPBC listed
 - ★ FFG listed
 - EPBC and FFG listed
 - Restricted fauna record

Figure 5 Threatened fauna records



Matter: 37595,
Date: 04 October 2022,
Prepared for: JB, Prepared by: MK, Last edited by: sblades
Layout: P:\37500s\37595\Fauna
Project: P:\37500s\37595\Mapping\
37595_GG_OffshoreWind.aprx

Acknowledgements: VicMap BaseMap © State of Victoria



- Legend**
- Study Area
 - Cable route
 - Wind Farm Area
 - FFG listed threatened ecological communities
- EPBC Act Ecological Communities of National Environmental Significance**
- Gippsland Red Gum (*Eucalyptus tereticornis* subsp. *mediana*)
 - Grassy Woodland and Associated Native Grassland
 - Subtropical and Temperate Coastal Saltmarsh

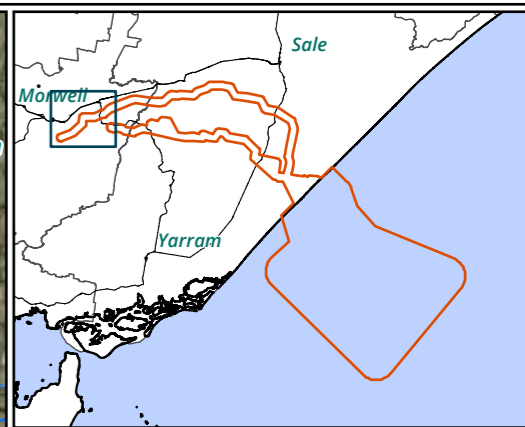
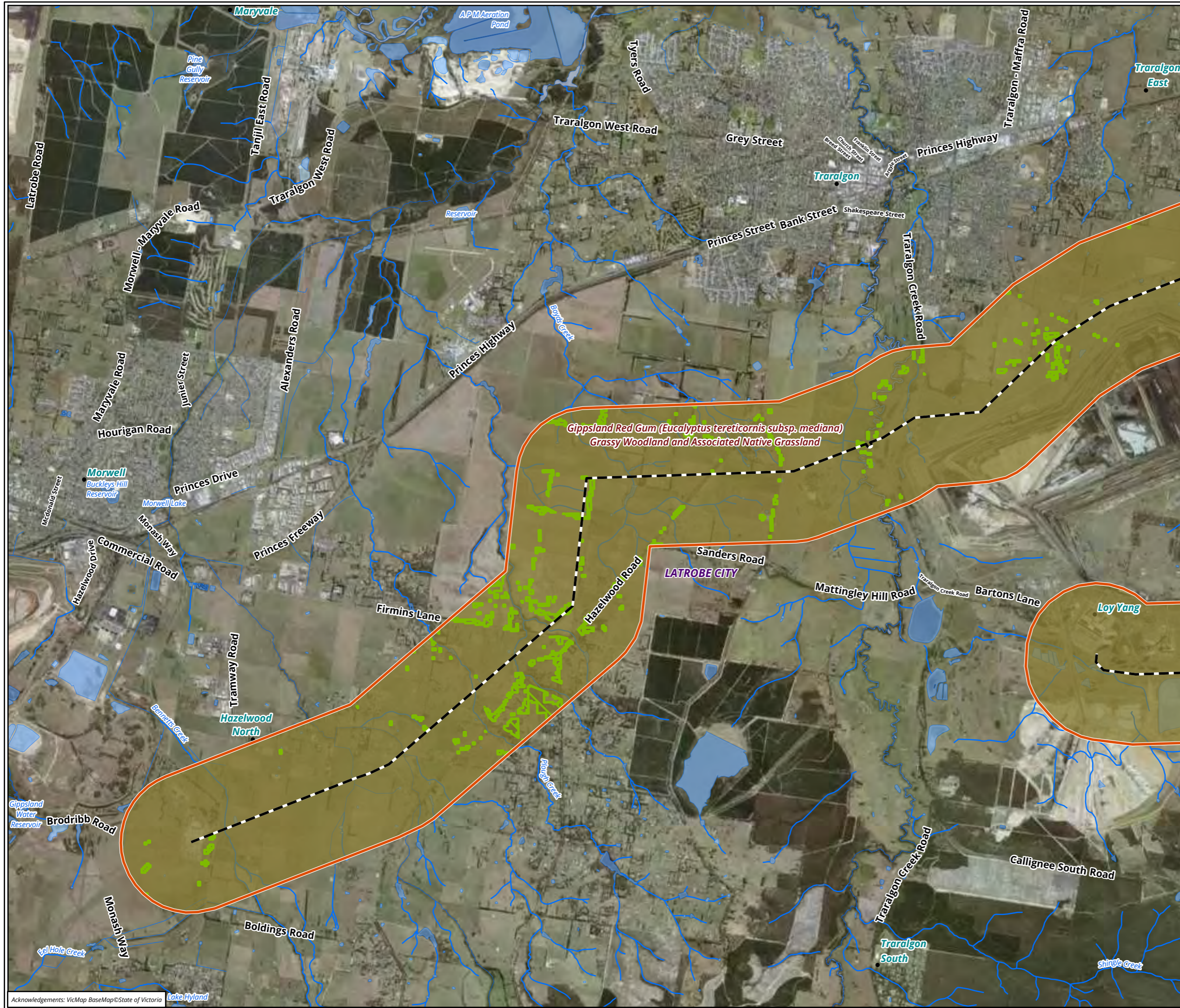
Figure 6.1 - Modelled threatened ecological communities in the Study Area - Overview

0 4 8 12 16 20
 Kilometers
 Scale: 1:350,000 @ A3
 Coordinate System: GDA 1994 MGA Zone 55



Matter: 37595,
 Date: 05 October 2022,
 Prepared for: JB, Prepared by: SB, Last edited by: sblades
 Layout: 37595_F6_TEC
 Project: P:\37500s\37595\Mapping\37595_GGOffshoreWind_TEC_aprx

Acknowledgements: VicMap BaseMap © State of Victoria



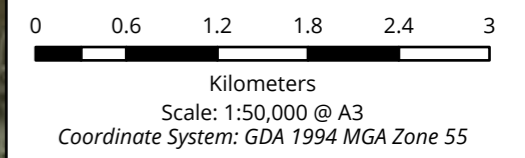
Legend

- Study Area
- Cable route
- Wind Farm Area
- FFG listed threatened ecological communities

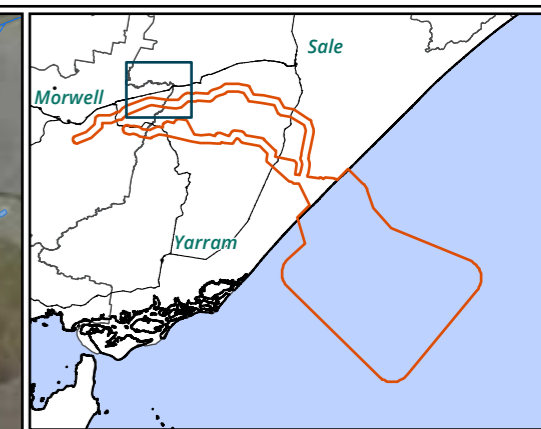
EPBC Act Ecological Communities of National Environmental Significance

- Gippsland Red Gum (*Eucalyptus tereticornis* subsp. *mediana*)
- Grassy Woodland and Associated Native Grassland
- Subtropical and Temperate Coastal Saltmarsh

Figure 6.2 - Modelled threatened ecological communities in the Study Area



Matter: 37595,
Date: 05 October 2022,
Prepared for: JB, Prepared by: SB, Last edited by: sblades
Layout: 37595_F6_TEC
Project: P:\37500s\37595\Mapping\37595_GGOffshoreWind_TEC_aprx



Legend

- Study Area
- Cable route
- Wind Farm Area
- FFG listed threatened ecological communities

EPBC Act Ecological Communities of National Environmental Significance

- Gippsland Red Gum (*Eucalyptus tereticornis* subsp. *mediana*)
- Grassy Woodland and Associated Native Grassland
- Subtropical and Temperate Coastal Saltmarsh

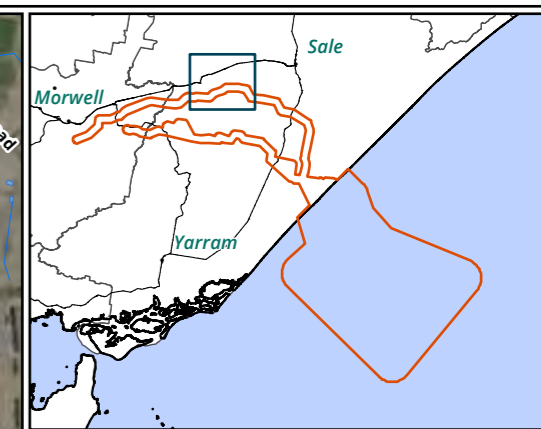
Figure 6.3 - Modelled threatened ecological communities in the Study Area

0 0.6 1.2 1.8 2.4 3
 Kilometers
 Scale: 1:50,000 @ A3
 Coordinate System: GDA 1994 MGA Zone 55



Matter: 37595,
 Date: 05 October 2022,
 Prepared for: JB, Prepared by: SB, Last edited by: sblades
 Layout: 37595_F6_TEC
 Project: P:\37500s\37595\Mapping\37595_GGOffshoreWind_TEC_aprx

Acknowledgements: VicMap BaseMap © State of Victoria



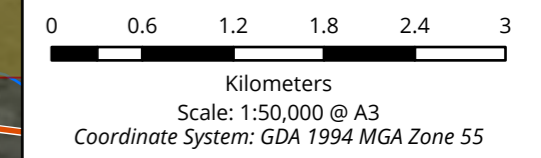
Legend

- Study Area
- Cable route
- Wind Farm Area
- FFG listed threatened ecological communities

EPBC Act Ecological Communities of National Environmental Significance

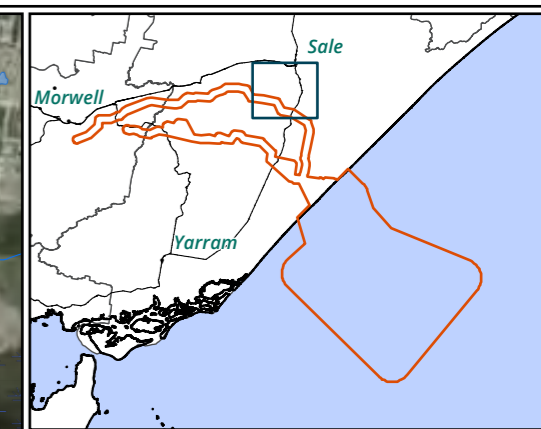
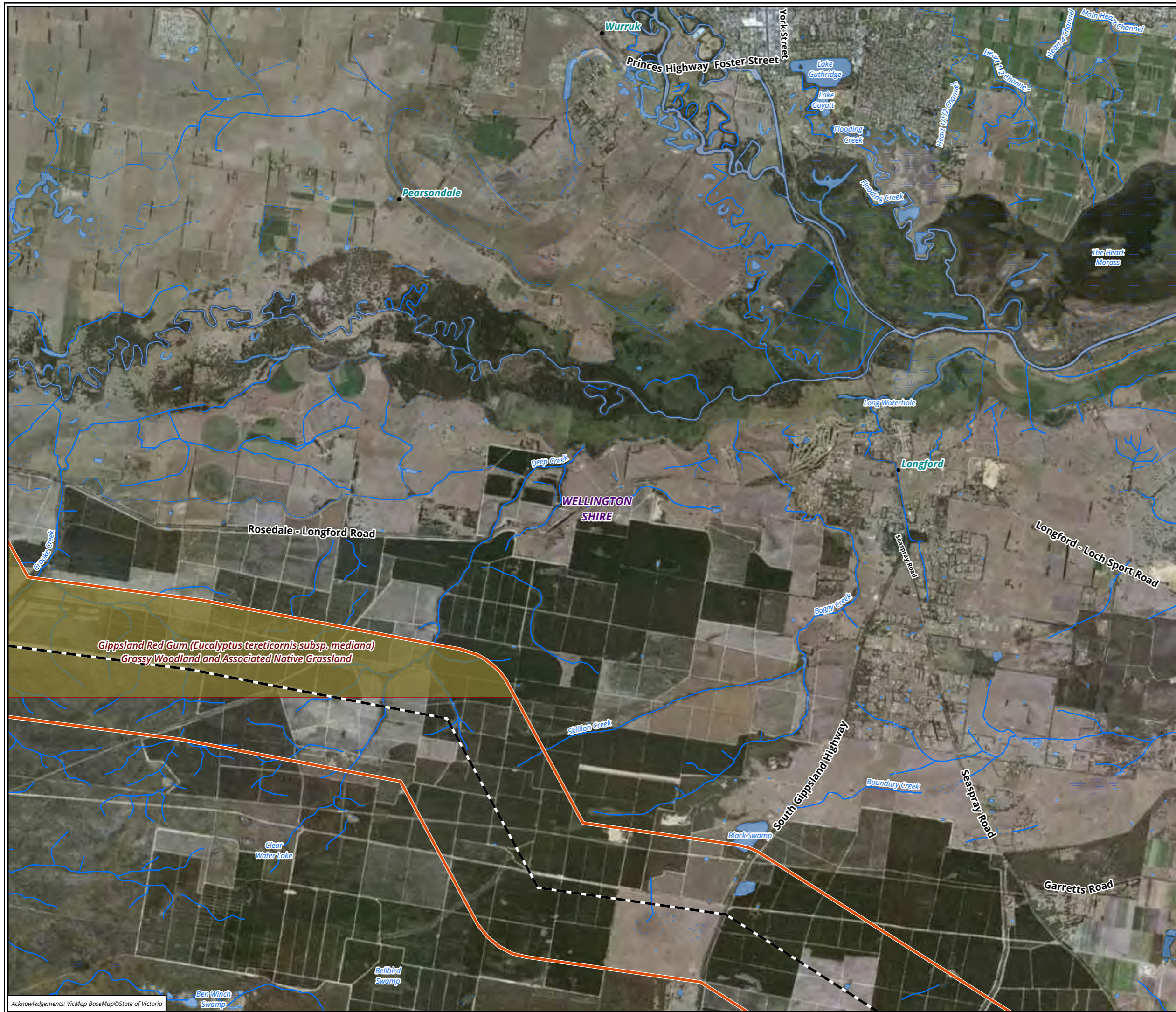
- Gippsland Red Gum (*Eucalyptus tereticornis* subsp. *mediana*)
- Grassy Woodland and Associated Native Grassland
- Subtropical and Temperate Coastal Saltmarsh

Figure 6.4 - Modelled threatened ecological communities in the Study Area



Matter: 37595,
 Date: 05 October 2022,
 Prepared for: JB, Prepared by: SB, Last edited by: sblades
 Layout: 37595_F6_TEC
 Project: P:\37500s\37595\Mapping\37595_GGOffshoreWind_TEC_aprx

Acknowledgements: VicMap BaseMap © State of Victoria



Legend

- Study Area
- Cable route
- Wind Farm Area
- FFG listed threatened ecological communities

EPBC Act Ecological Communities of National Environmental Significance

- Gippsland Red Gum (*Eucalyptus tereticornis* subsp. *mediana*)
- Grassy Woodland and Associated Native Grassland
- Subtropical and Temperate Coastal Saltmarsh

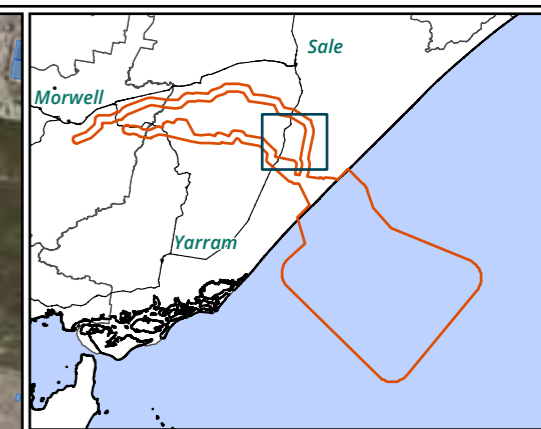
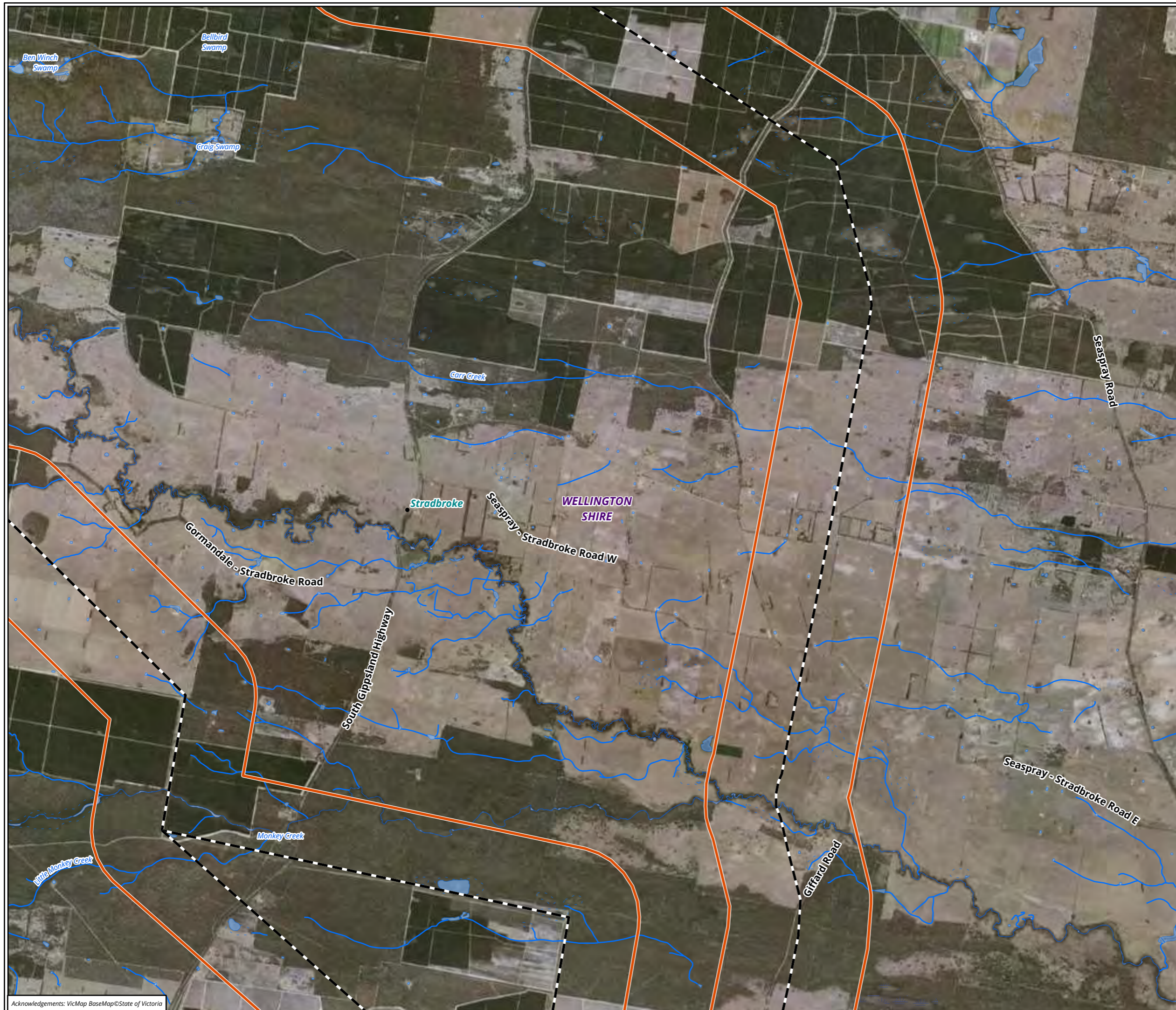
Figure 6.5 - Modelled threatened ecological communities in the Study Area

0 0.6 1.2 1.8 2.4 3
 Kilometers
 Scale: 1:50,000 @ A3
 Coordinate System: GDA 1994 MGA Zone 55



Matter: 37595,
 Date: 05 October 2022,
 Prepared for: JB, Prepared by: SB, Last edited by: sblades
 Layout: 37595_F6_TEC
 Project: P:\37500s\37595\Mapping\37595_GGOffshoreWind_TEC_aprx

Acknowledgements: VicMap BaseMap © State of Victoria



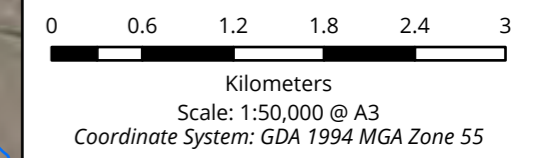
Legend

- Study Area
- Cable route
- Wind Farm Area
- FFG listed threatened ecological communities

EPBC Act Ecological Communities of National Environmental Significance

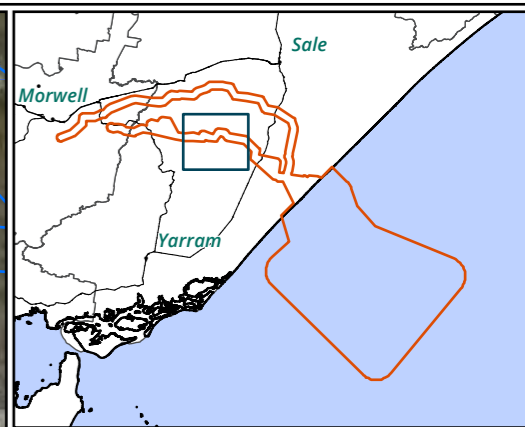
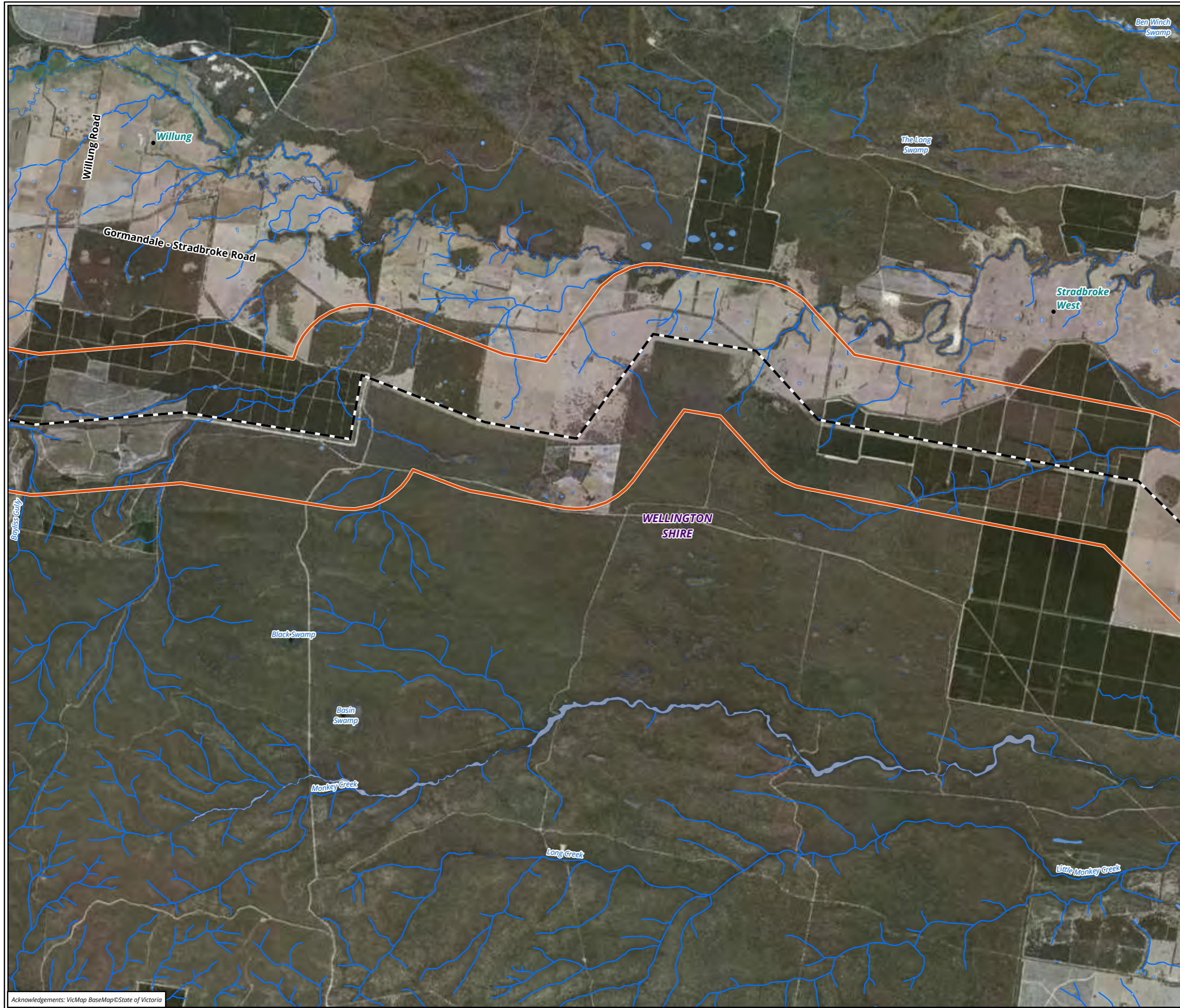
- Gippsland Red Gum (*Eucalyptus tereticornis* subsp. *mediana*)
- Grassy Woodland and Associated Native Grassland
- Subtropical and Temperate Coastal Saltmarsh

Figure 6.6 - Modelled threatened ecological communities in the Study Area



Matter: 37595,
 Date: 05 October 2022,
 Prepared for: JB, Prepared by: SB, Last edited by: sblades
 Layout: 37595_F6_TEC
 Project: P:\37500s\37595\Mapping\37595_GGOffshoreWind_TEC_aprx

Acknowledgements: VicMap BaseMap © State of Victoria



Legend

- Study Area
- Cable route
- Wind Farm Area
- FFG listed threatened ecological communities

EPBC Act Ecological Communities of National Environmental Significance

- Gippsland Red Gum (*Eucalyptus tereticornis* subsp. *mediana*)
- Grassy Woodland and Associated Native Grassland
- Subtropical and Temperate Coastal Saltmarsh

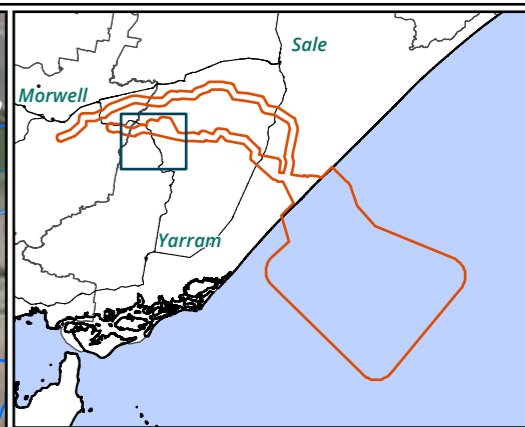
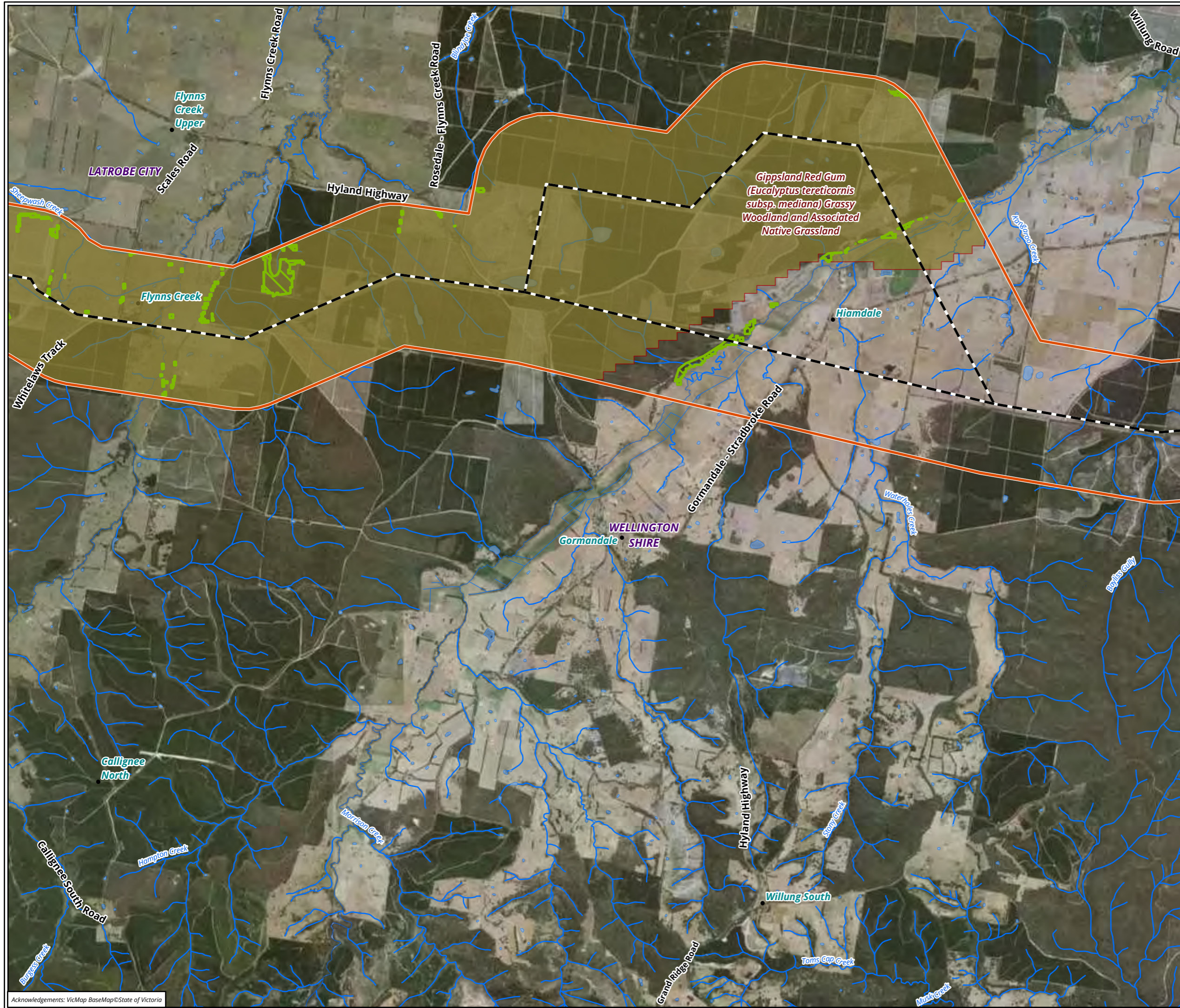
Figure 6.7 - Modelled threatened ecological communities in the Study Area

0 0.6 1.2 1.8 2.4 3
 Kilometers
 Scale: 1:50,000 @ A3
 Coordinate System: GDA 1994 MGA Zone 55



Matter: 37595,
 Date: 05 October 2022,
 Prepared for: JB, Prepared by: SB, Last edited by: sblades
 Layout: 37595_F6_TEC
 Project: P:\37500s\37595\Mapping\37595_GGOffshoreWind_TEC_aprx

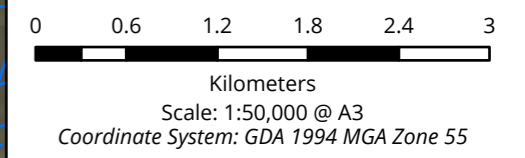
Acknowledgements: VicMap BaseMap © State of Victoria



Legend

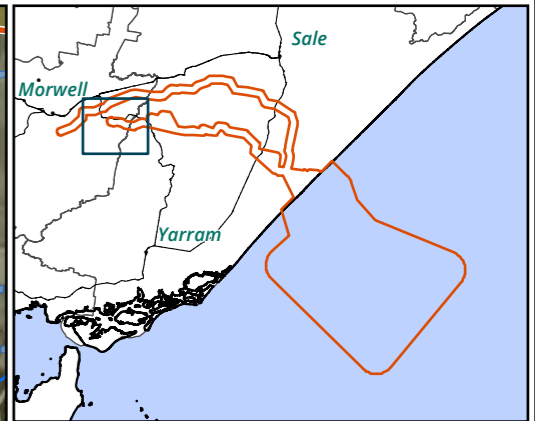
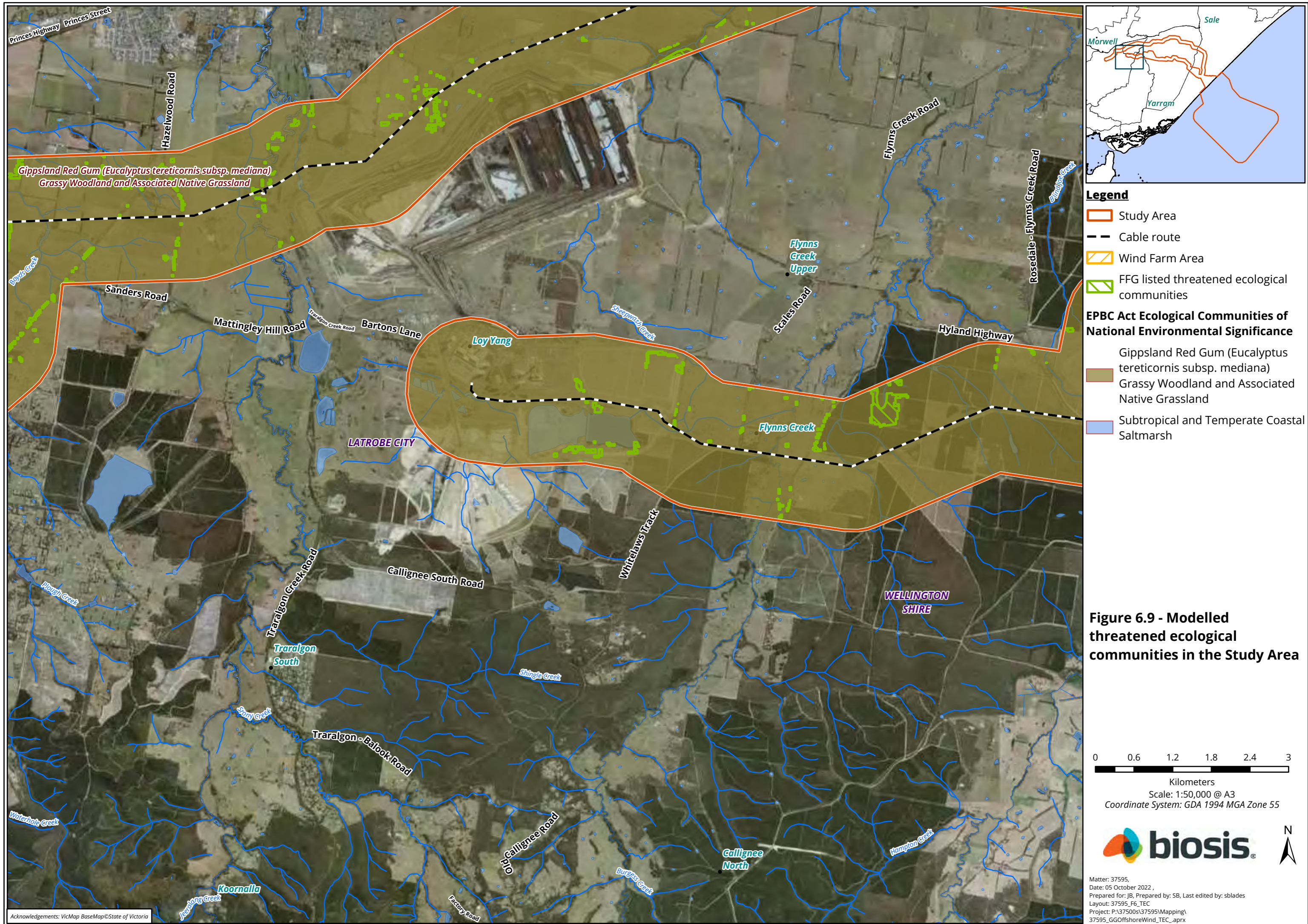
-  Study Area
 -  Cable route
 -  Wind Farm Area
 -  FFG listed threatened ecological communities
- EPBC Act Ecological Communities of National Environmental Significance**
-  Gippsland Red Gum (*Eucalyptus tereticornis subsp. mediana*) Grassy Woodland and Associated Native Grassland
 -  Subtropical and Temperate Coastal Saltmarsh

Figure 6.8 - Modelled threatened ecological communities in the Study Area



Matter: 37595,
 Date: 05 October 2022,
 Prepared for: JB, Prepared by: SB, Last edited by: sblades
 Layout: 37595_F6_TEC
 Project: P:\37500s\37595\Mapping\37595_GGOffshoreWind_TEC_aprx

Acknowledgements: VicMap BaseMap © State of Victoria



- Legend**
- Study Area
 - Cable route
 - Wind Farm Area
 - FFG listed threatened ecological communities
- EPBC Act Ecological Communities of National Environmental Significance**
- Gippsland Red Gum (*Eucalyptus tereticornis* subsp. *mediana*)
 - Grassy Woodland and Associated Native Grassland
 - Subtropical and Temperate Coastal Saltmarsh

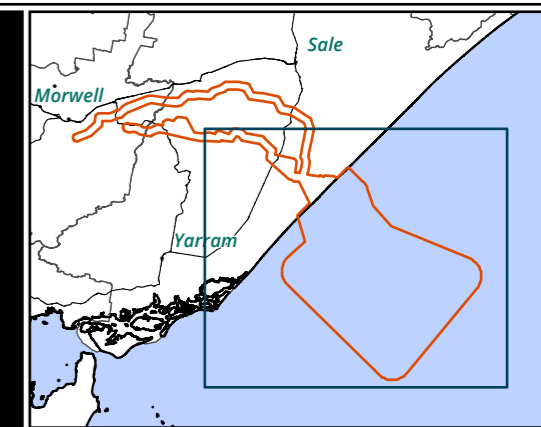
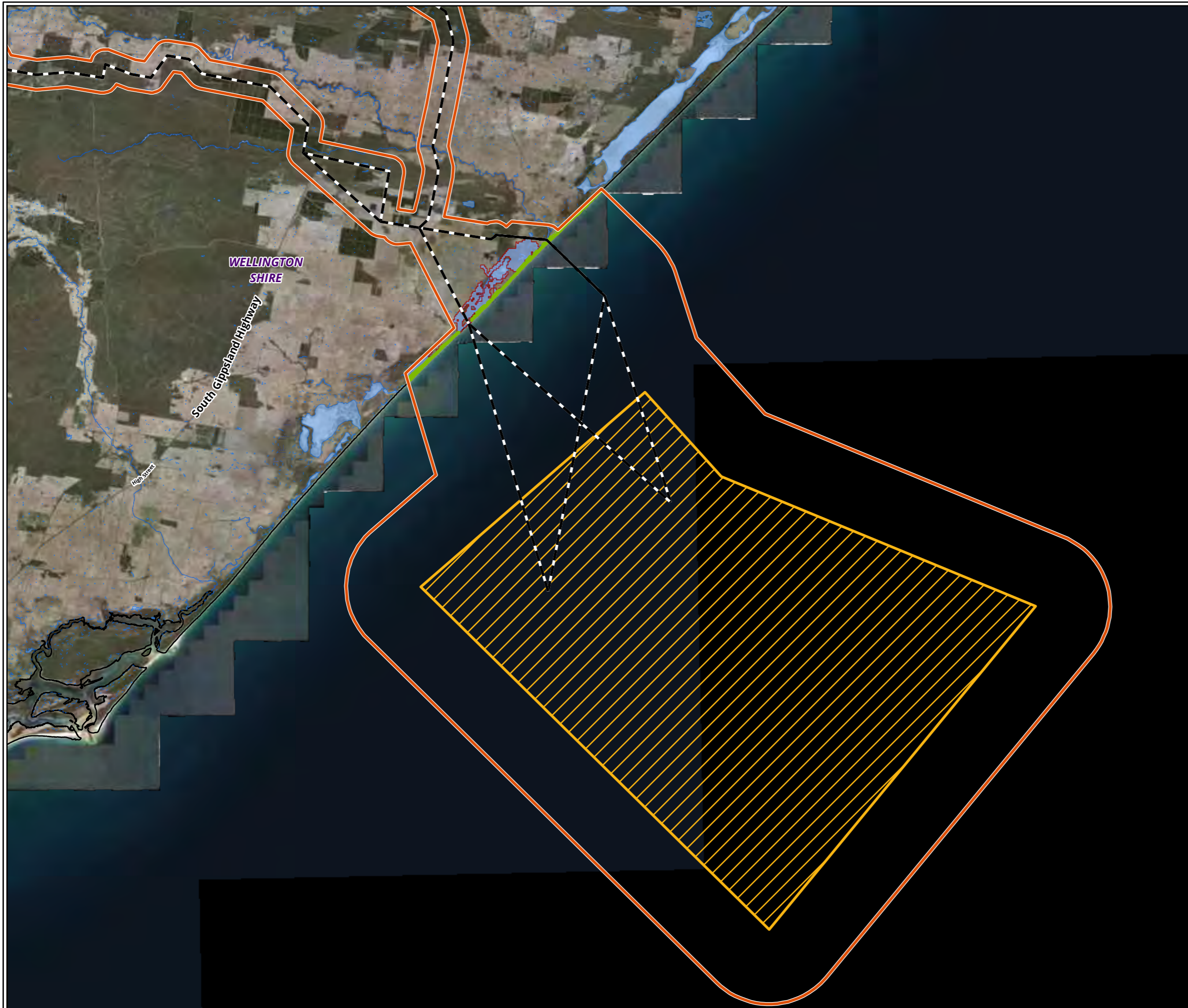
Figure 6.9 - Modelled threatened ecological communities in the Study Area

0 0.6 1.2 1.8 2.4 3
 Kilometers
 Scale: 1:50,000 @ A3
 Coordinate System: GDA 1994 MGA Zone 55







Matter: 37595,
 Date: 05 October 2022,
 Prepared for: JB, Prepared by: SB, Last edited by: sblades
 Layout: 37595_F6_TEC
 Project: P:\37500s\37595\Mapping\37595_GGOffshoreWind_TEC_aprx

Acknowledgements: VicMap BaseMap © State of Victoria



Legend

-  Study Area
-  Cable route
-  Wind Farm Area
-  FFG listed threatened ecological communities

EPBC Act Ecological Communities of National Environmental Significance



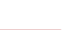
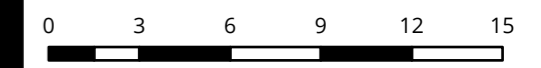
-  Gippsland Red Gum (*Eucalyptus tereticornis* subsp. *mediana*)
-  Grassy Woodland and Associated Native Grassland
-  Subtropical and Temperate Coastal Saltmarsh

Figure 6.10 - Modelled threatened ecological communities in the Study Area



Scale: 1:250,000 @ A3
 Coordinate System: GDA 1994 MGA Zone 55



Matter: 37595,
 Date: 05 October 2022,
 Prepared for: JB, Prepared by: SB, Last edited by: sblades
 Layout: 37595_F6_TEC
 Project: P:\37500s\37595\Mapping\37595_GGOffshoreWind_TEC_aprx