

Legend

- Element 1a: Duplication
between Deer Park West and
Melton (Inside MSA: Inside
BCS)
- Impact area
- EPBC Act listed species
- Large-fruited Fireweed
- Spiny Rice-flower
- Other features
- Localities
- MSA BCS Extent

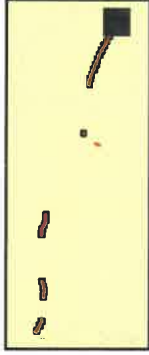


Figure 3b
Ecological features
Ballarat Line Upgrade:
Ecological Site Assessments



VicMap Data: The State of Victoria does not warrant the accuracy or completeness of information in this publication and any person using or relying upon such information does so on the basis that the State of Victoria shall bear no responsibility or liability whatsoever for any errors, omissions, defects or omissions in the information.

Legend

- Element 1a: Duplication
between Deer Park West and
Melton (Inside MSA: Inside
BCS)
- Impact area
- EPBC Act listed species
- Large-fruited Fireweed
- Spiny Rice-flower
- Other features
- Localities
- MSA BCS Extent



Figure 3c
Ecological features
Ballarat Line Upgrade:
Ecological Site Assessments



Warning Data: This State of Victoria does not warrant the accuracy or completeness of information in this publication and any person using or relying upon such information does so on their basis that the State of Victoria shall bear no responsibility or liability whatsoever for any errors, omissions, defects or omissions in the information.



Legend

- Element 1a: Duplication between Deer Park West and Melton (Inside MSA: Inside BCS)
- Impact area
- Other features
- Localities
- MSA BCS Extent



See Figure 3e

See Figure 3c

Figure 3d
Ecological features
Ballarat Line Upgrade:
Ecological Site Assessments



VicMap Data: The State of Victoria does not warrant the accuracy or completeness of information in this publication and any person using or relying upon such information does so on the basis that the State of Victoria shall bear no responsibility or liability whatsoever for any errors, omissions, defects or omissions in the information.

Service Layer Credits: Source: Esri, DigitalGlobe, GeoEye, Earthstar Geographics, CNES/Airbus DS, USDA, USGS, AeroGRID, IGN, and the GIS User Community

Legend

- Element 1a: Duplication
between Deer Park West and
Melton (Inside MSA: Inside
BCS)
- Impact area
- Other features
- Localities
- MSA BCS Extent



Figure 3e
Ecological features
Ballarat Line Upgrade:
Ecological Site Assessments



Veolia Park. The State of Victoria does not warrant the accuracy or completeness of information in this publication or any other information published by the State of Victoria. The State of Victoria shall bear no responsibility or liability whatsoever for any errors, omissions or omissions in the information.



Services and Credits: Source: Esri, DigitalGlobe, GeoEye, EarthstarGeographics, CNES/Airbus DS, USDA, USGS, AeroGRID, IGN, and the GIS User Community

Legend

- Element 1a: Duplication
between Deer Park West and
Melton (Inside MSA: Inside
BCS)
- Impact area
- Other features
- Localities
- MSA BCS Extent



Figure 3f
Ecological features
Ballarat Line Upgrade:
Ecological Site Assessments



Victoria State: The State of Victoria does not warrant the accuracy or completeness of information in this profile sheet and any person using or relying upon such information does so on the basis that the State of Victoria shall bear no responsibility or liability whatsoever for any errors, omissions, defects or omissions in this information.

Map Layer Credits: Source: Esri, DigitalGlobe, GeoEye, Earthstar Geographics, CNES/Airbus DS, USDA, USGS, AeroGRID, IGN, JGA, FNA, USDA, CNR

Legend

- Element 1a: Duplication between Deer Park West and Melton (Inside MSA: Inside BCS)
 -
- Impact area
 -
- Other features
 -
- Localities
 -
- MSA BCS Extent
 -

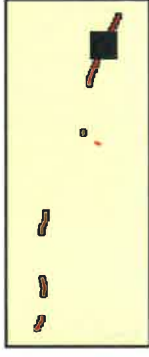


Figure 3g
Ecological features
Ballarat Line Upgrade:
Ecological Site Assessments



Victoria Data: The State of Victoria does not warrant the accuracy or completeness of information in this publication or any products that the State of Victoria shall bear no responsibility or liability whatsoever for any errors, faults, omissions, or in the information.



Service Layer Credits: Source: Esri, DigitalGlobe, GeoEye, Earthstar Geographics, CNES/Airbus DS, USDA, USGS, AeroGRID, IGN, and the GIS User Community

Legend

- Element 1a: Duplication
between Deer Park West and
Melton (Inside MSA, Inside
BCS)
- Impact area
- Other features
- Localities
- MSA BCS Extent



Figure 3h
Ecological features
Ballarat Line Upgrade:
Ecological Site Assessments



VicMap Data: The State of Victoria does not warrant the accuracy or completeness of information in this publication and any person using or relying upon such information does so on the basis that the State of Victoria shall bear no responsibility or liability whatsoever for any errors, omissions, defects or omissions in the information.



Service Layer Credits: Source: Esri, DigitalGlobe, GeoEye, Earthstar Geographics, CNES/Airbus DS, USDA, USGS, AeroGRID, IGN, and the GIS User Community

Legend









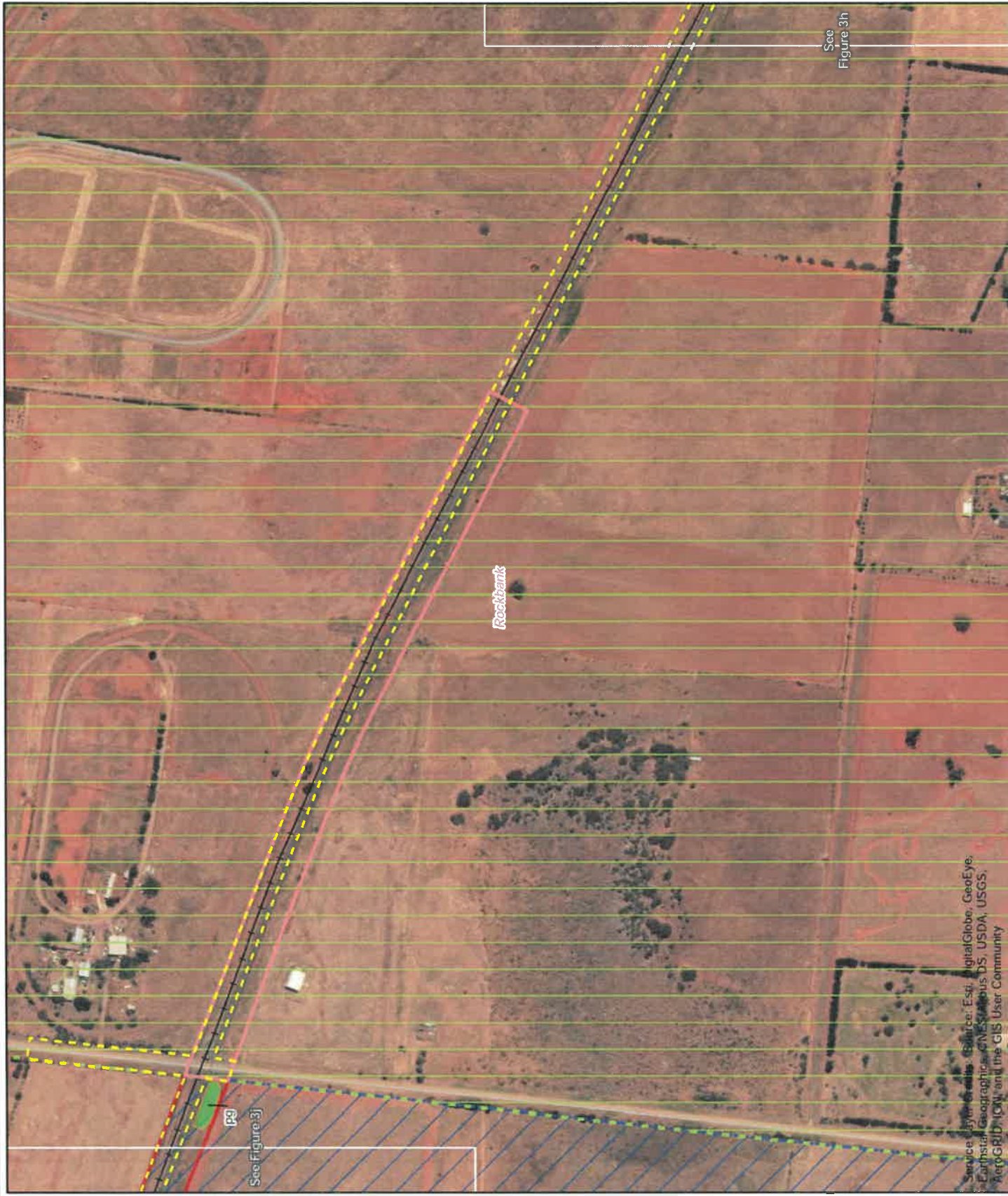
- Element 1a: Duplication
between Deer Park West and
Melton (Inside MSA: Inside
BCS) 
- Element 1b: Duplication
between Deer Park West and
Melton (Inside MSA: Inside
Toolem PSP) 
- Impact area 
- Ecological Vegetation Classes
 - Plains Grassland 
 - Other features 
 - Localities 
 - MSA BCS Extent 
 - Toolem PSP 



Figure 3i
Ecological features
Ballarat Line Upgrade:
Ecological Site Assessments



Vegety Data. The State of Victoria does not warrant the accuracy or completeness of information in this publication and any person using or relying upon such information does so on the basis that the State of Victoria shall bear no responsibility of liability whatsoever for any errors, faults, omissions or misstatements in this information.



Source: Esri, DeLorme, GeoEye, Earthstar Geographics, CNES/Airbus DS, USDA, USGS, AeroGRID, IGN, and the GIS User Community

Legend

- Element 1b: Duplication between Deer Park West and Melton (Inside MSA; Inside Toolern PSP)
- Impact area
- Scattered Remnant Tree
- Tree proposed to be impacted
- Ecological Vegetation Classes
- Plains Grassland
- Vegetation proposed to be impacted
- EPBC Act listed species
- Spiny Rice-flower
- Other features
- Localities
- Toolern PSP



Figure 3j
Ecological features
Ballarat Line Upgrade:
Ecological Site Assessments



WorkMap Data: The State of Victoria does not warrant the accuracy or completeness of information in this publication and any person using or relying upon such information does so on the basis that the State of Victoria shall bear no responsibility or liability and/or any other errors, omissions, or defects of omission in the information.

Service Layer Credits: Source: Esri, DigitalGlobe, GeoEye, Earthstar Geographics, CNES/Airbus DS, USDA, USGS, AeroGRID, IGN, and the GIS User Community

Legend

- Element 1b: Duplication between Deer Park West and Melton (Inside MSA: Inside Toolern PSP)
- Impact area
- Ecological Vegetation Classes
 - Plains Grassland
 - Plains Grassy Woodland
 - Plains Woodland
- Vegetation proposed to be impacted
- Other features
- Localities
- Toolern PSP



Figure 3k
Ecological features
Ballarat Line Upgrade:
Ecological Site Assessments



Victoria Data: The State of Victoria does not warrant the accuracy or completeness of information in this publication and any person using or relying on this information shall bear no responsibility or liability whatsoever for any errors, faults, defects or omissions in the information.



Service Layer Credits: Source: Esri, DigitalGlobe, GeoEye, Earthstar Geographics, CNR/S/Airbus DS, USDA, USGS, AeroGRID, IGN, and the GIS User Community

Legend

- Element 1b: Duplication between Deer Park West and Melton (Inside MSA: Inside Toolern PSP)
- Impact area
- Scattered Remnant Tree
- Tree proposed to be impacted
- Ecological Vegetation Classes
- Plains Grassland
- Plains Woodland
- Vegetation proposed to be impacted
- Other features
- Localities
- Toolern PSP

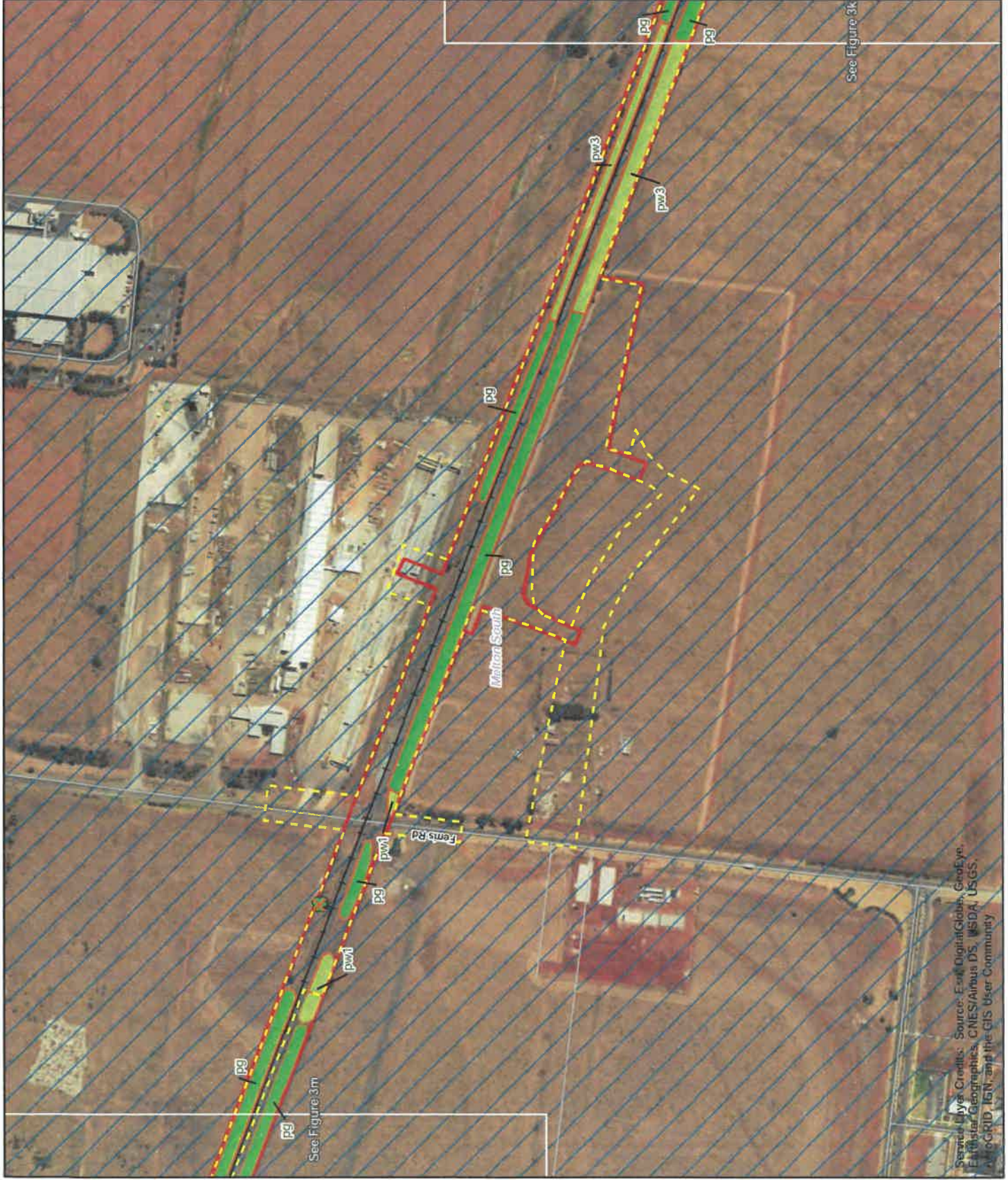


Figure 3I
Ecological features
Ballarat Line Upgrade:
Ecological Site Assessments

See Figure 3k



WeMap Data: The State of Victoria does not warrant the accuracy or completeness of information in this publication and any person using or relying upon such information does so on the basis that the State of Victoria shall bear no responsibility or liability whatsoever for any errors, omissions, defects or omissions in the information.

Source: Esri, DigitalGlobe, GeoEye, Earthstar Geographics, CNES/Airbus DS, USDA, USGS, AeroGRID, IGN, and the GIS User Community

Legend

- Element 1b: Duplication between Deer Park West and Melton (Inside MSA: Inside Toolern PSP)
- Impact area
- Scattered Remnant Tree
- Ecological Vegetation Classes
- Lignum Swamp
- Plains Grassland
- Plains Woodland
- Vegetation proposed to be impacted
- Other features
- Localities
- Toolern PSP

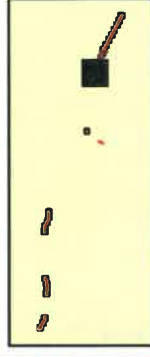
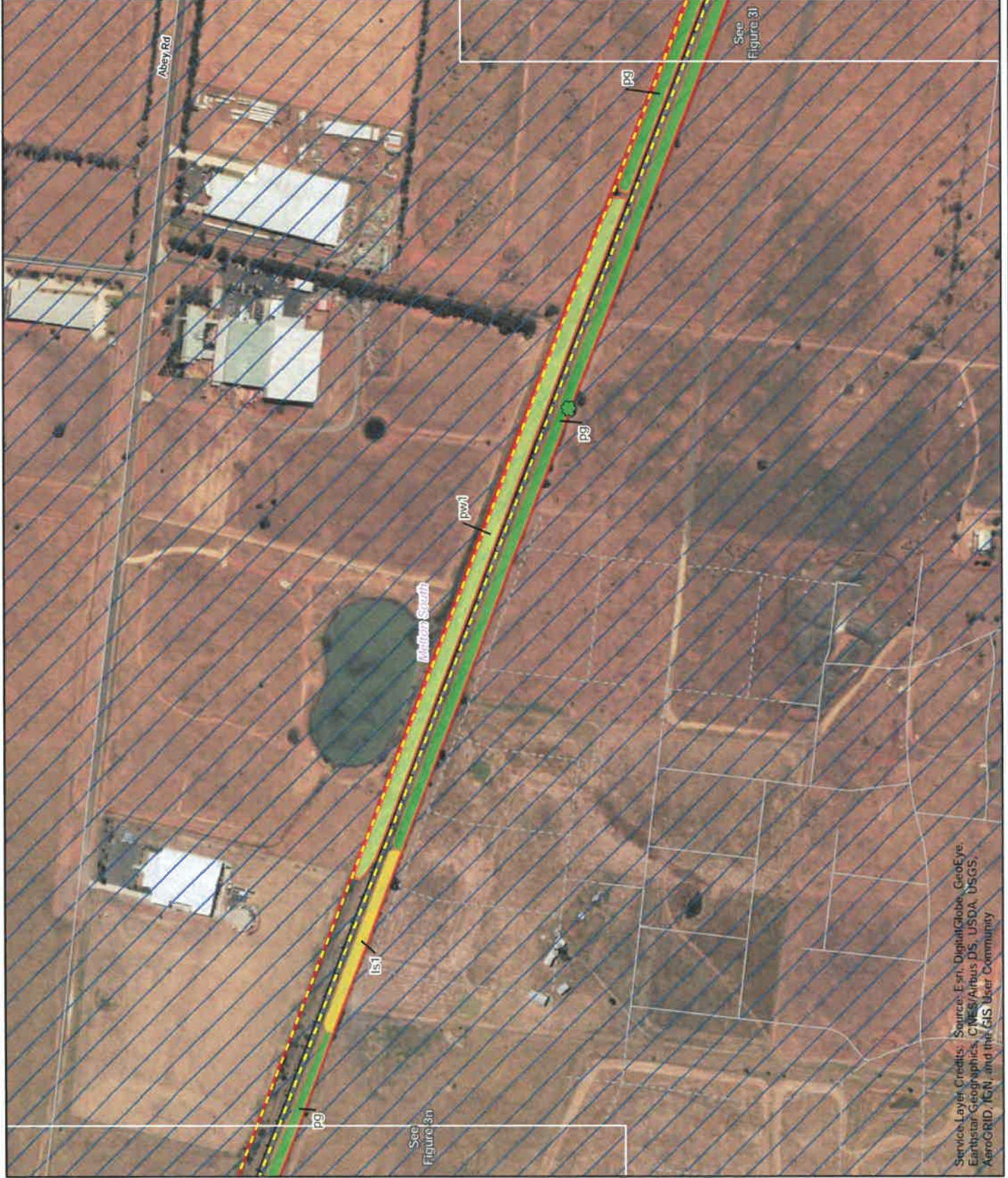


Figure 3m
Ecological features
Ballarat Line Upgrade:
Ecological Site Assessments



Victorian Data: The State of Victoria does not warrant the accuracy or completeness of information in this publication, and any reliance that the State of Victoria shall bear no responsibility or liability whatsoever for any errors, omissions, defects or consequences in the information.



Service Layer Credits: Source: Esri, DigitalGlobe, GeoEye, Earthstar Geographics, CNES/Airbus DS, USDA, USGS, AeroGRID, IGN, and the GIS User Community

Legend

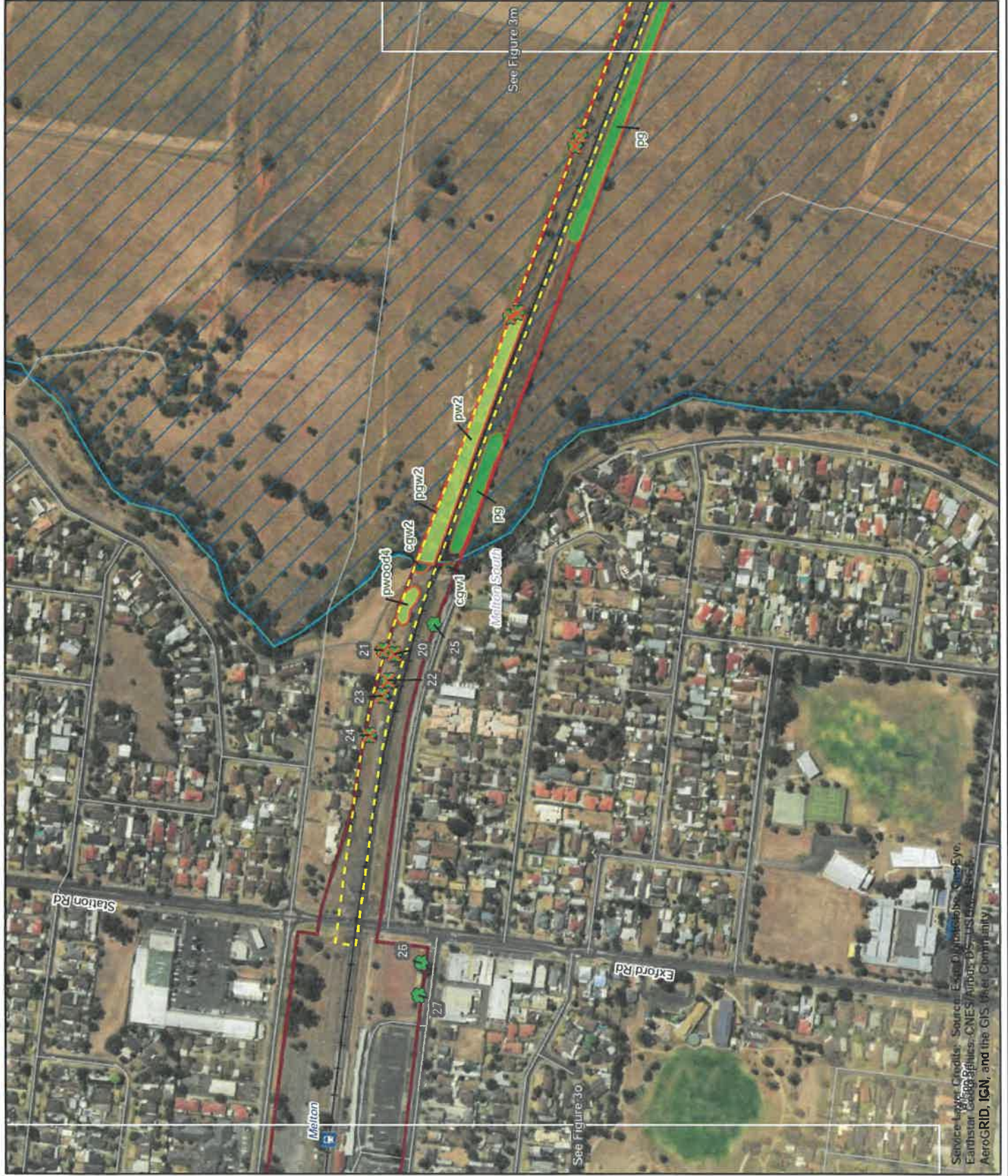
- Element 1b: Duplication between Deer Park West and Melton (Inside MSA: Inside Toolern PSP)
- Element 1c: Duplication between Deer Park West and Melton (outside MSA)
- Impact area
- Scattered Remnant Tree
- Tree proposed to be impacted
- Ecological Vegetation Classes
 - Creekline Grassy Woodland
 - Plains Grassland
 - Plains Grassy Woodland
 - Plains Woodland
 - Vegetation proposed to be impacted
- Other features
 - Localities
 - Toolern PSP



Figure 3n
 Ecological features
 Ballarat Line Upgrade:
 Ecological Site Assessments



Vegetation Data: The State of Victoria does not warrant the accuracy or completeness of information in this guide, above and any information using or relying upon such information does so on the basis that the State of Victoria shall bear no responsibility or liability whatsoever for any errors, omissions or omissions in the information.



Service Layer Credits: Sources: Esri, DigitalGlobe, GeoEye, Earthstar, CNES/Airbus DS, USDA, USDA, AeroGRID, IGN, and the GIS User Community

Legend

- Element 1c: Duplication between Deer Park West and Melton (outside MSA)
- Element 2 - Stabling at Melton Station
- Impact area
- Scattered Remnant Tree
- Tree proposed to be impacted
- Ecological Vegetation Classes
- Plains Grassland
- Plains Woodland
- Vegetation proposed to be impacted
- EPBC Act listed vegetation community
- Natural Temperate Grassland of the Victorian Volcanic Plain
- Other features
- Localities

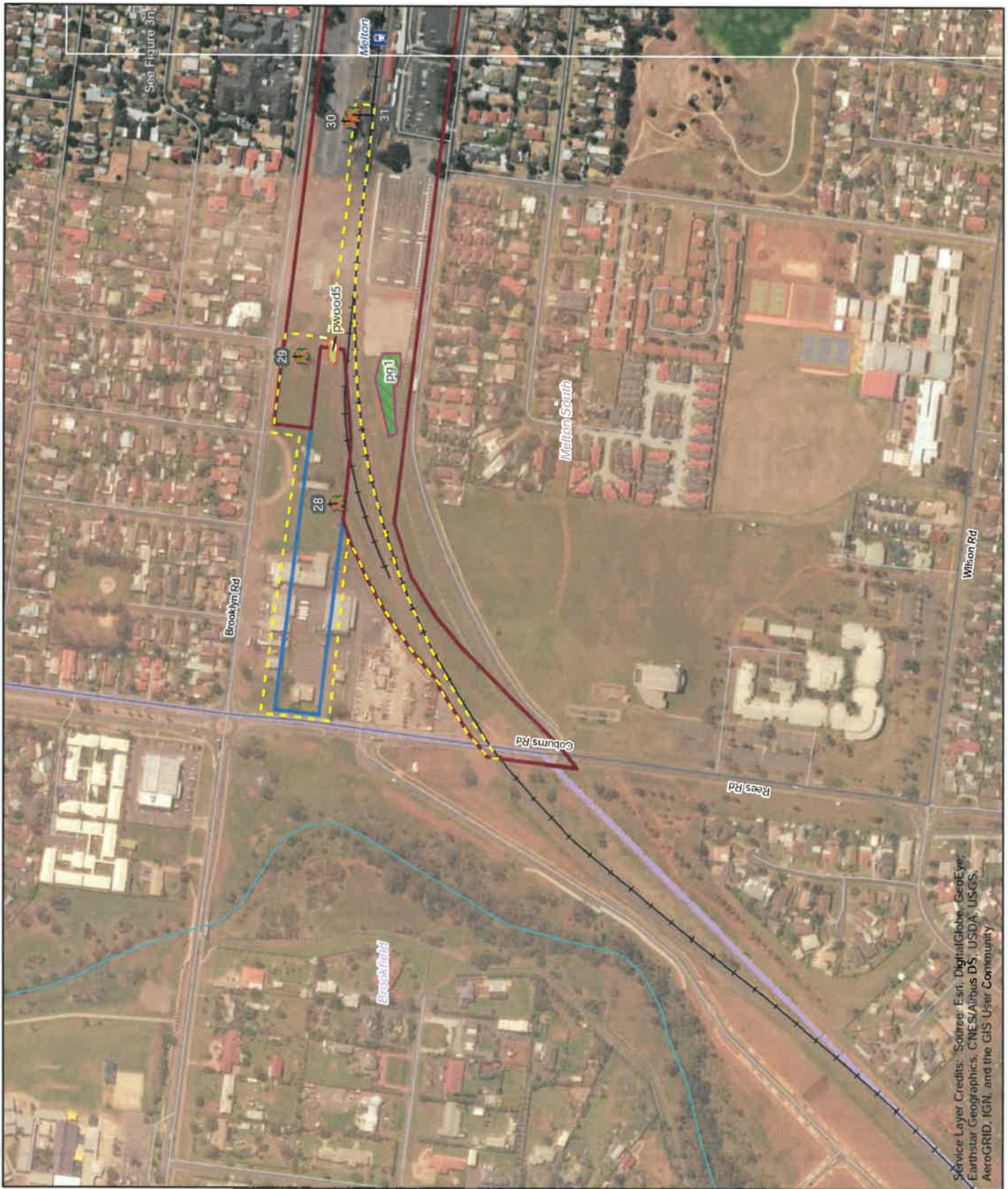


Figure 30
Ecological features
Ballarat Line Upgrade:
Ecological Site Assessments



Map Data: The State of Victoria does not warrant the accuracy or completeness of information in this publication and any person using or relying upon such information does so on the basis that the State of Victoria shall bear no responsibility or liability whatsoever for any errors, omissions, defects or omissions in the information.

Service Layer Credits: Sotree, Esri, DigitalGlobe, GeoEye, Earthstar Geographics, CNES/Airbus DS, USDA, USGS, AeroGRID, IGN, and the GIS User Community

Legend

-  Element 3 - Bacchus Marsh to Rowsley Stabling
-  Impact area
-  Scattered Remnant Tree
-  Tree proposed to be impacted
-  Other features
-  Localities



Figure 3p
Ecological features
Ballarat Line Upgrade:
Ecological Site Assessments



Verdigris Design - The State of Victoria does not warrant the accuracy or completeness of information in this publication and any person using or relying upon such information does so on their own behalf. The State of Victoria shall bear the responsibility as liability whatsoever for any errors, omissions, defects or misstatements in this information.



Service Layer Credits: Source: Esri, DigitalGlobe, GeoEye, Earthstar Geographics, CNES/Airbus DS, USDA, USGS, AeroGRID, IGN, and the GIS User Community



See Figure 3r

- Legend**
- Element 4 - Ballan Loop
 - Impact area
 - Ecological Vegetation Classes
 - Plains Grassland
 - Vegetation proposed to be impacted
 - EPBC Act listed vegetation community
 - Natural Temperate Grassland of the Victorian Volcanic Plain
 - + EPBC Act listed species
 - + Matted Flax-lily
 - Other features
 - Localities



Figure 3q
Ecological features
Ballarat Line Upgrade:
Ecological Site Assessments



Wetland Data: The State of Victoria does not warrant the accuracy or completeness of information in this publication. The State of Victoria shall bear no responsibility or liability whatsoever for any errors, omissions, defects or omissions in the information.

Service Layer Credits: Source: Esri, DigitalGlobe, GeoEye, Earthstar Geographics, CNES/Airbus DS, USDA, USGS, AeroGRID, IGN, and the GIS User Community

Legend










-  Element 4 - Ballan Loop
-  Impact area
-  Ecological Vegetation Classes
-  Plains Grassy Woodland
-  Vegetation proposed to be impacted
-  EPBC Act listed species
-  Matted Flax-lily
-  Other features
-  Localities



Figure 3r
 Ecological features
 Ballarat Line Upgrade:
 Ecological Site Assessments



Warning Data: The State of Victoria does not warrant the accuracy or completeness or omission in this publication and any person using or relying upon such information does so on the basis that the State of Victoria (with its officers, employees or contractors) shall not be liable for any errors, omissions or inaccuracies in the information.

Service Layer Credits: Source: Esri, DigitalGlobe, GeoEye, Earthstar Geographics, CNES/Airbus DS, USDA, USGS, AeroGRID, IGN, and the GIS User Community

Legend



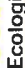



-  Element 4 - Ballan Loop
-  Impact area
- Ecological Vegetation Classes**
-  Plains Grassy Woodland
-  Vegetation proposed to be impacted
- EPBC Act listed species**
-  Matted Flax-lily
- Other features**
-  Localities




Figure 3s
Ecological features
Ballarat Line Upgrade:
Ecological Site Assessments



WARNING: This State of Victoria does not warrant the accuracy or completeness of the information in this publication and the person using or relying upon such information does so on their own behalf. State of Victoria shall bear no responsibility or liability whatsoever for any errors, omissions or consequences in this information.

Service Layer Credits: Source: Esri, DigitalGlobe, GeoEye, Earthstar Geographics, CNES/Airbus DS, USDA, USGS, AeroGRID, IGN, and the GIS User Community

- Legend**
-  Element 4 - Ballan Loop
 -  Impact area
 -  Scattered Remnant Tree
 - Ecological Vegetation Classes**
 -  Plains Grassland
 -  Plains Grassy Woodland
 -  Vegetation proposed to be impacted
 - Other features**
 -  Localities

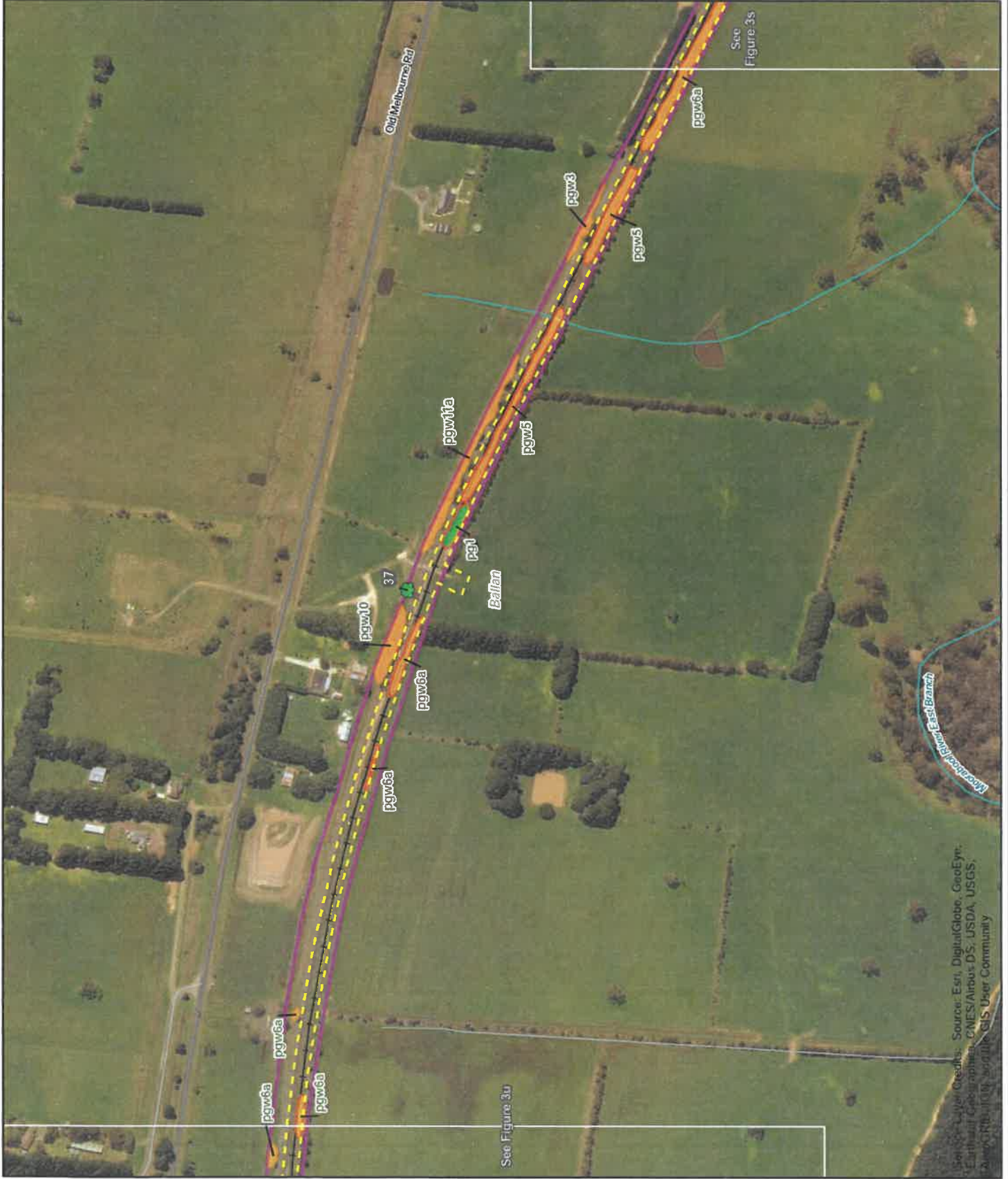


Figure 3t
Ecological features
Ballarat Line Upgrade:
Ecological Site Assessments



Victorian Government. The State of Victoria does not warrant the accuracy or completeness of information in this publication and any person relying on it does so at their own risk. We are not liable for any loss or damage that may be suffered as a result of reliance on the information. Details of our services are available on our website.

Page 3 of 10 | EoR-17-MB-1006/2017-1007

Source: Esri, DigitalGlobe, GeoEye, Earthstar Geographics, CNES/Airbus DS, USDA, USGS, AeroGRID, IGN, and the GIS User Community



- Legend**
- Element 4 - Ballarat Loop
 - Impact area
- Ecological Vegetation Classes**
- Plains Grassland
 - Plains Grassy Woodland
 - Vegetation proposed to be impacted
- Other features**
- Localities

See Figure 3t



Figure 3u
Ecological features
Ballarat Line Upgrade:
Ecological Site Assessments



Map Data: The State of Victoria does not warrant the accuracy or completeness of information in this publication and any person using or relying upon such information does so on the basis that the State of Victoria shall bear no responsibility or liability whatsoever for any errors, omissions, defects or omissions in the information.

Service Layer Credits: Source: Esri, DigitalGlobe, GeoEye, Earthstar Geographics, CNES/Airbus DS, USDA, USGS, AeroGRID, IGN, and the GIS User Community

Legend

- Element 5 - Spreadeagle (new Bungaree) Loop
- Impact area
- Scattered Remnant Tree
- ✕ Tree proposed to be impacted
- Ecological Vegetation Classes**
- Plains Grassy Woodland
- Tall Marsh
- Other features
- Localities



See Figure 3w

Figure 3v
Ecological features
Ballarat Line Upgrade:
Ecological Site Assessments



We warrant that the State of Victoria does not warrant the accuracy or completeness of information in this publication, and any person using or relying upon such information shall do so at their own risk. The State of Victoria shall bear no responsibility or liability whatsoever for any errors, omissions, defects or omissions in the information.

Service Layer Credits: Source: Esri, DigitalGlobe, GeoEye, Earthstar Geographics, CNES/Airbus DS, USDA, USGS, AeroGRID, IGN, and the GIS User-Community

Legend

- Element 5 - Spreadeagle (new Bungaree) Loop
- Impact area
- Scattered Remnant Tree
- Tree proposed to be impacted
- Ecological Vegetation Classes**
- Plains Grassy Woodland
- Tall Marsh
- Vegetation proposed to be impacted
- Other features**
- Localities



Figure 3w
Ecological features
Ballarat Line Upgrade:
Ecological Site Assessments



Vector Data: The State of Victoria does not warrant the accuracy or completeness of information in this publication and any person using or relying upon this information does so on their own risk. The State of Victoria shall bear no responsibility or liability whatsoever for any errors, omissions, defects or inaccuracies in the information.

Service Layer Credits: Source: Esri, DigitalGlobe, GeoEye, Earthstar Geographics, CNES/Airbus DS, USDA, USGS, AeroGRID, IGN, and the GIS User Community

Legend

- Element 5 - Spreadingeagle (new Bungaree) Loop
- Impact area
- Other features
- Localities



Figure 3x
Ecological features
Ballarat Line Upgrade:
Ecological Site Assessments



McMurr Data. The State of Victoria does not warrant the accuracy or completeness of information in this publication and any person using or relying upon such information does so at their sole risk. The State of Victoria shall bear no responsibility or liability whatsoever for any errors, omissions, defects or consequences of the information.

Service Layer Credits: Source: Esri, DigitalGlobe, GeoEye, Earthstar Geographics, CNES/Airbus DS, USDA, USGS, AeroGRID, IGN, and the GIS User Community



- Legend**
- Element 5 - Spreadeagle (new Bungaree) Loop
 - Impact area
 - Scattered Remnant Tree
 - Tree proposed to be impacted
- Ecological Vegetation Classes**
- Plains Grassy Woodland
 - Vegetation proposed to be impacted
- Other features**
- Localities



Figure 3y
Ecological features
Ballarat Line Upgrade:
Ecological Site Assessments



We Make Better. The State of Victoria does not warrant the accuracy or completeness of information in this publication and any person using or relying upon such information does so on the basis that the State of Victoria shall bear no responsibility or liability whatsoever for any errors, omissions, defects or omissions in the information.

Service Layer Credits: Source: Esri, DigitalGlobe, GeoEye, Earthstar Geographics, CNES/Airbus DS, USDA, USGS, AeroGRID, IGN, and the GIS User Community

See Figure 3aa



- Legend**
- Element 6 - Warrenheip duplication
 - Impact area
- Ecological Vegetation Classes**
- Plains Grassy Woodland
 - Vegetation proposed to be impacted
- Other features**
- Localities



Figure 3z
Ecological features
Ballarat Line Upgrade:
Ecological Site Assessments



Mapping Data: The State of Victoria does not warrant the accuracy or completeness of information in this publication and any person relying or relying upon such information does so at their own risk. The State of Victoria shall bear no responsibility or liability whatsoever for any errors, omissions, defects or inaccuracies in this information.

Services Layer Credits: Source: Esri, DigitalGlobe, GeoEye, Earthstar Geographics, CNES/Airbus DS, USDA, USGS, AeroGRID, IGN, and the GIS User Community



- Legend**
- Element 6 - Warrenheip duplication
 - Impact area
 - Other features
 - Localities

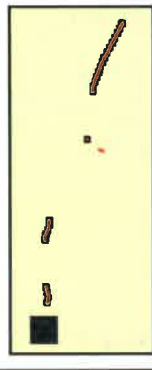


Figure 3aa
Ecological features
Ballarat Line Upgrade:
Ecological Site Assessments



Disclaimer: The State of Victoria does not warrant the accuracy or completeness of the information in this publication or any other information provided by or on behalf of the State of Victoria, and the State of Victoria shall bear no responsibility or liability whatsoever for any errors, omissions or inaccuracies in the information.

Service Layer Credits: Source: Esri, DigitalGlobe, GeoEye, Earthstar Geographics, CNES/Airbus DS, USDA, USGS, AeroGRID, IGN, and the GIS User Community