

NUNDUK

DRAWING INDEX

a1	COVER SHEET	1:100000 @a1 size
Masterplan		
a2	SITE LOCATION	1:10000 @a1 size
a3	MASTERPLAN	1:2000 @a1 size
a4	IMPACT ZONES	1:2000 @a1 size
a5	ZONES GFA	not to scale
a6	ROOF AREA	not to scale
Plans, elevations & sections		
SPA RETREAT PRECINCT		
a7	PRECINCTS	1:2000 @a1 size
a8	SPA RETREAT PRECINCT SITE PLAN	1:500 @a1 size
a9	BASEMENT/ SERVICE CORRIDOR PLAN	1:500 @a1 size
a10	GROUND FLOOR PLAN	1:500 @a1 size
a11	FIRST FLOOR PLAN	1:500 @a1 size
a12	GROUND FLOOR DETAIL_A PLAN	1:200 @a1 size
a13	GROUND FLOOR DETAIL_B PLAN	1:200 @a1 size
a14	FIRST FLOOR DETAIL_A PLAN	1:200 @a1 size
a15	FIRST FLOOR DETAIL_B PLAN	1:200 @a1 size
a16	FIRST FLOOR DETAIL_C_2 PLAN	1:100 @a1 size
a17	TYPICAL ROOM LAYOUT	not to scale
a18	TYPICAL SECTION	1:50 @a1 size
a19	SECTIONS 1 @ 2	1:250 @a1 size
a20	SECTIONS 3 @ 4	1:250 @a1 size
a21	SECTION 5	1:500 @a1 size
a22	SECTION 6,7&8	1:500 @a1 size
a23	ELEVATIONS B&W	1:500 @a1 size
a24	ELEVATIONS COLOR	1:500 @a1 size
a25	ELEVATIONS /DETAILED/FINISHES	not to scale
a26	SPA RETREAT GFA	1:750 @a1 size
a27	SPA RETREAT AREA SCHEDULE	1:1000 @a1 size

Plans, elevations & sections

VILLA PRECINCT

a28	VILLA PRECINCT	1:1000 @a1 size
a29	VILLA TYPES	1:120 @a1 size
a30	VILLA TYPE "A" LEVEL GROUND	1:100 @a1 size
a31	VILLA TYPE "A" LEVEL 1	1:100 @a1 size
a32	VILLA TYPE "A" ROOF LEVEL	1:100 @a1 size
a33	ELEVATIONS VILLA TYPE "A"	1:100 @a1 size
a34	SECTIONS VILLA TYPE "A"	1:50 @a1 size
a35	VILLA TYPE "B" PLANS	1:100 @a1 size
a36	VILLA TYPE "B" ELEVATIONS	1:100 @a1 size
a37	VILLA TYPE "B" SECTIONS	1:50 @a1 size
a38	VILLA TYPE "C" PLANS	1:100 @a1 size
a39	VILLA TYPE "C" ELEVATIONS	1:100 @a1 size
a40	VILLA TYPE "C" SECTIONS	1:50 @a1 size
a41	VILLA -DETAIL / FINISHES	not to scale
a42	VILLA AREA SCHEDULE	not to scale
a43	SECTION_TYPICAL WALKWAY	not to scale

Plans, elevations & sections

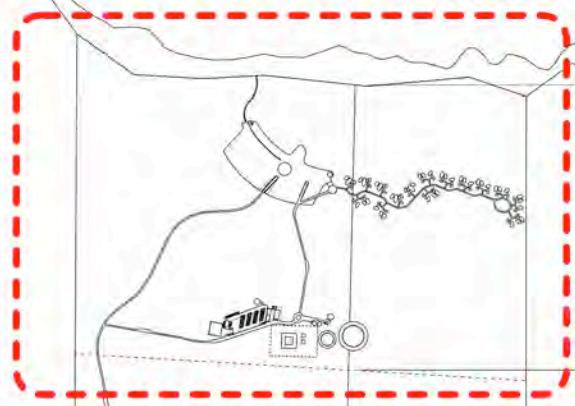
ENVIRONMENTAL INFRASTRUCTURE PRECINCT

a43	MAINTENANCE /PLANT AREA SCHEDULE	1:500 @a1 size
a44	MAINTENANCE / PLANT SITE PLAN	1:250 @a1 size
a45	STAFF ACCOMODATION	1:100 @a1 size
a46	MAINTENANCE / PLANT SITE ELEVATIONS	1:600 @a1 size
a47	MAINTENANCE / PLANT SITE ELEVATIONS	1:600 @a1 size
a48	STAFF ACCOMODATION ELEVATIONS	1:100 @a1 size
a49	STAFF ACCOMODATION ELEVATIONS	1:100 @a1 size
a50	STAFF ACCOMODATION SECTIONS	1:100 @a1 size
a51	STAFF ACCOMODATION DETAIL/ FINISHES	not to scale
a52	INFRASTRUCTURE PRECINCT SERVICE SERVICE ROAD SECTION	1:250 @a1 size
a53	INFRASTRUCTURE / SERVICES LAYOUT	1:250 @a1 size
a54	FLOODWAY OVERLAY	1:10000 @a1 size

LAKE WELLINGTON

BULL POINT

SITE LOCATION



aprox. 720.00 m aprox. 469.50 m

aprox. 751.70 m

aprox. 2225.00 m

aprox. 1719.50 m

EMERGENCY CARPARK / 70 cars/

EXISTING SETTLEMENT

SEACOMBE WEST

Longford- Loch Sport Road

aprox. 757.40 m

PROJECT
NUNDUK Spa Retreat

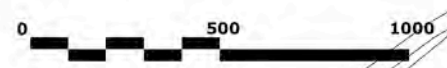
DESCRIPTION
SITE LOCATION 1:10000 @ A1 size

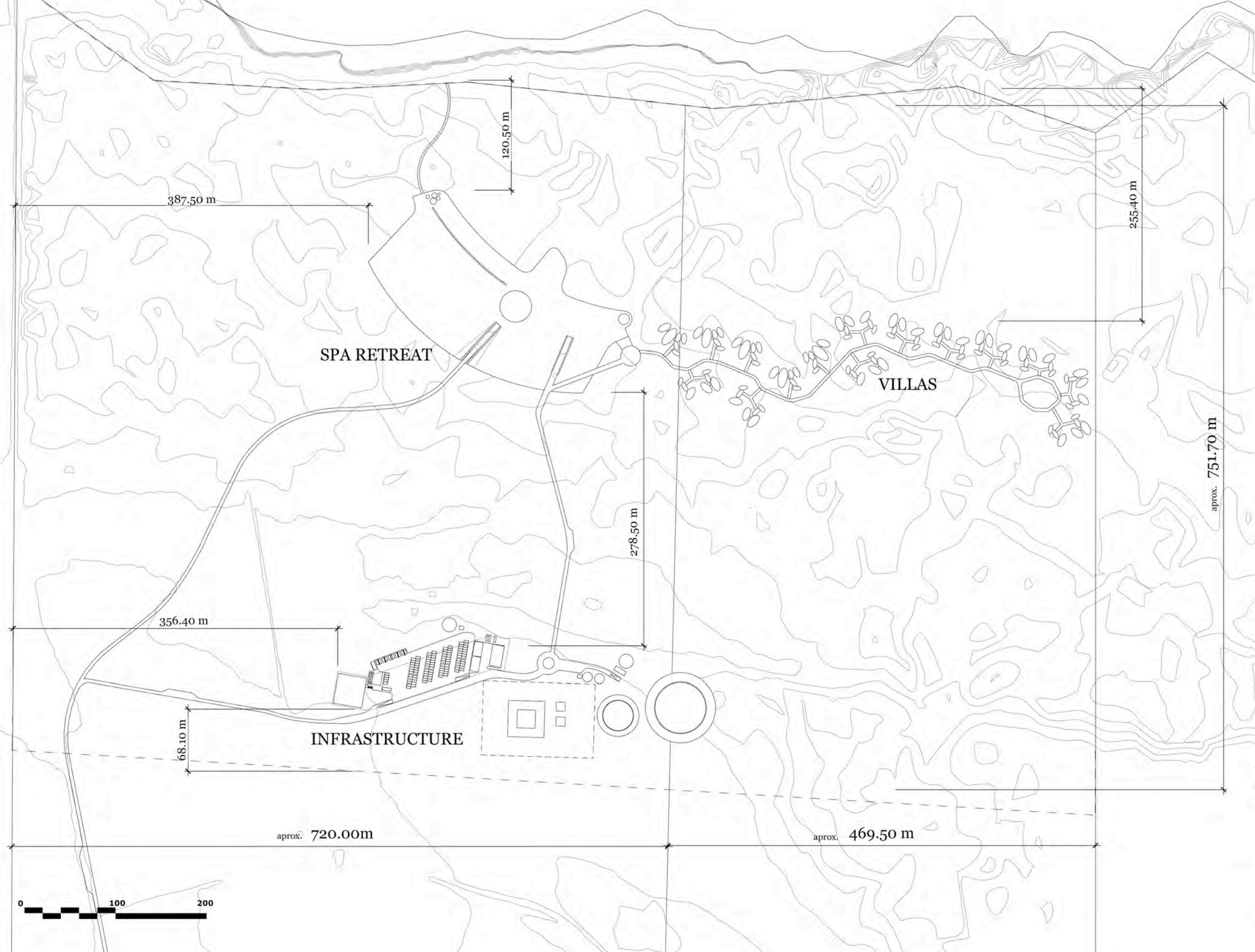
DRAWN BY
BP

ISSUE planning
28.08.2018

REVISIONS

12.12.2017
14.02.2018
21.02.2018
23.02.2018
05.03.2018
16.08.2018
20.08.2018
25.08.2018





PROJECT
NUNDUK Spa Retreat

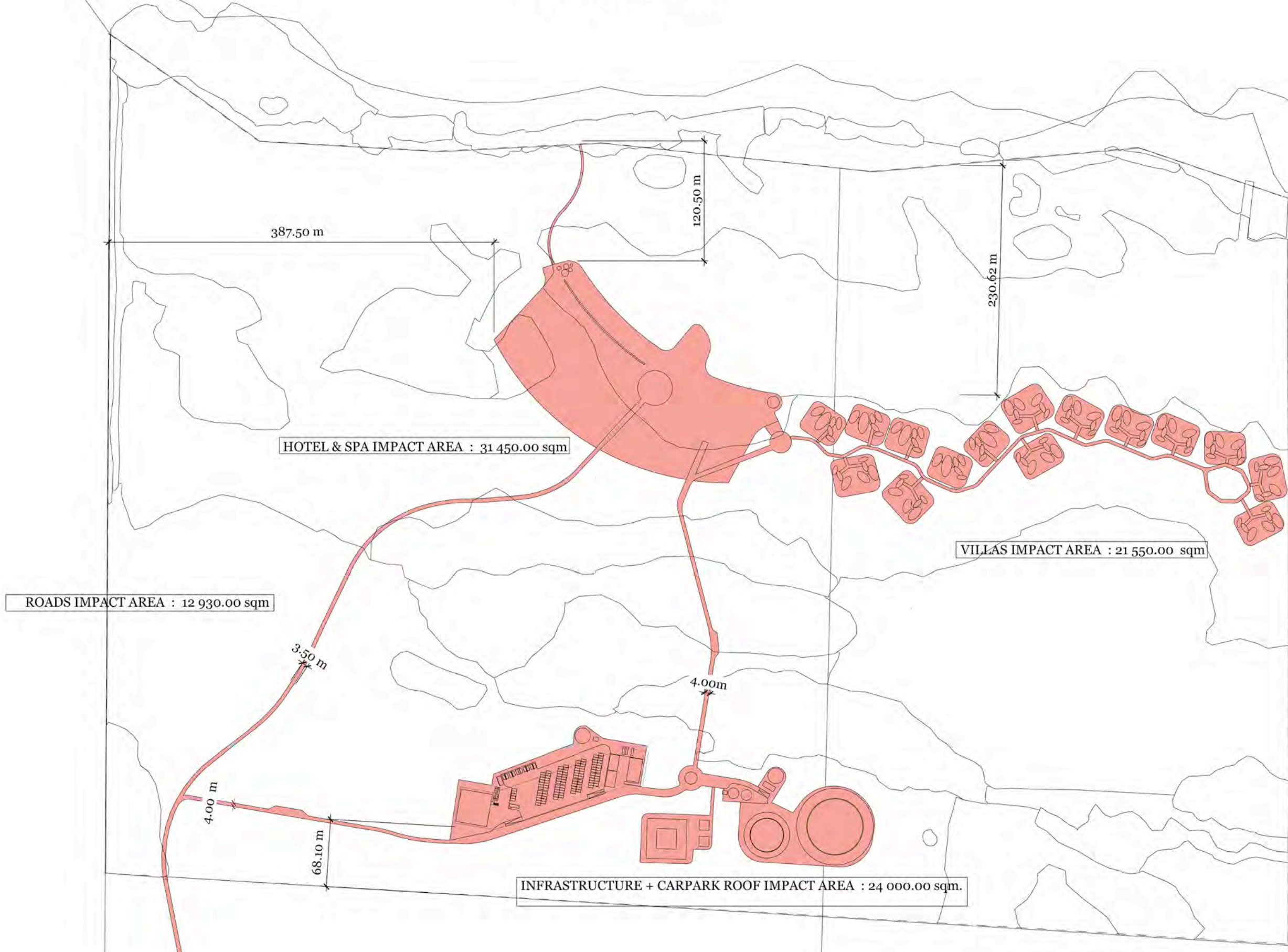
DESCRIPTION
MASTERPLAN 1:2000 @ A1 size

DRAWN BY
BP

ISSUE: planning
28.08.2018

REVISIONS
12.12.2017
14.02.2018
21.02.2018
23.02.2018
05.03.2018
16.08.2018
20.08.2018
28.08.2018

LAKE WELLINGTON



PROJECT
NUNDUK Spa Retreat

DESCRIPTION
IMPACT ZONES 1:2000 @ A_1 size

DRAWN BY
BP

ISSUE: planning
28.08.2018

REVISIONS

12.12.2017
14.02.2018
21.02.2018
23.02.2018
05.03.2018
16.08.2018
20.08.2018
28.08.2018



RETREAT GFA 11229.00 sqm
 SPA & WELLBEING CENTRE GFA 1500.00 sqm
 OUTDOOR AREA GFA 1050.00 sqm

SPA & RETREAT GFA. 13 779.00 sqm

VILLAS GFA. 6800 sqm

SERVICE ACCOMODATION GFA 1040.00 sqm
 CAR PARK + CHARGING STATIONS /104 cars/ 3000.00 sqm
 LAUDRY/WASTE/SHED+ etc. GFA 2850.00 sqm

INFRASTRUCTURE @ SERVICES GFL. 6890 sqm

TOTAL GFA. 27 469 sqm

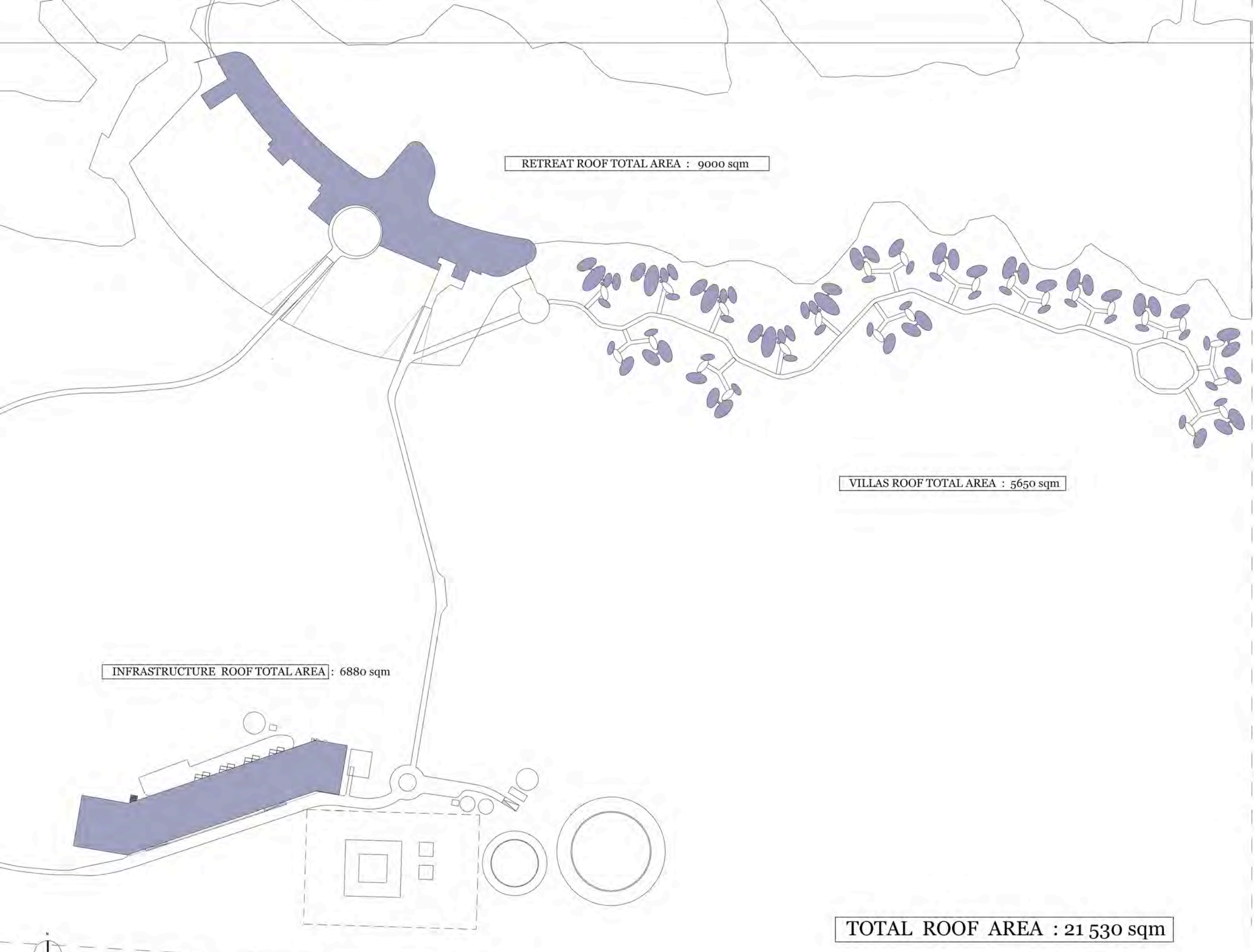
PROJECT
 NUNDUK Spa Retreat

DESCRIPTION
 ZONES GFL

DRAWN BY
 BP

ISSUE: planning
 28.08.2018

REVISIONS
 12.12.2017
 18.02.2018
 20.02.2018
 23.02.2018
 06.03.2018
 16.08.2018
 20.08.2018
 25.08.2018



RETREAT ROOF TOTAL AREA : 9000 sqm

VILLAS ROOF TOTAL AREA : 5650 sqm

INFRASTRUCTURE ROOF TOTAL AREA : 6880 sqm

TOTAL ROOF AREA : 21 530 sqm

PROJECT
NUNDUK Spa Retreat

DESCRIPTION
TOTAL ROOF AREA
DRAWN BY
BP

ISSUE: planning
28.08.2018
REVISIONS
11.02.2018
26.02.2018

06.03.2018
16.08.2018
20.08.2018
25.08.2018

BULL POINT

LAKE WELLINGTON

SPA RETREAT PRECINCT

VILLA PRECINCT

ENVIRONMENTAL INFRASTRUCTURE PRECINCT

PROJECT
NUNDUK Spa Retreat

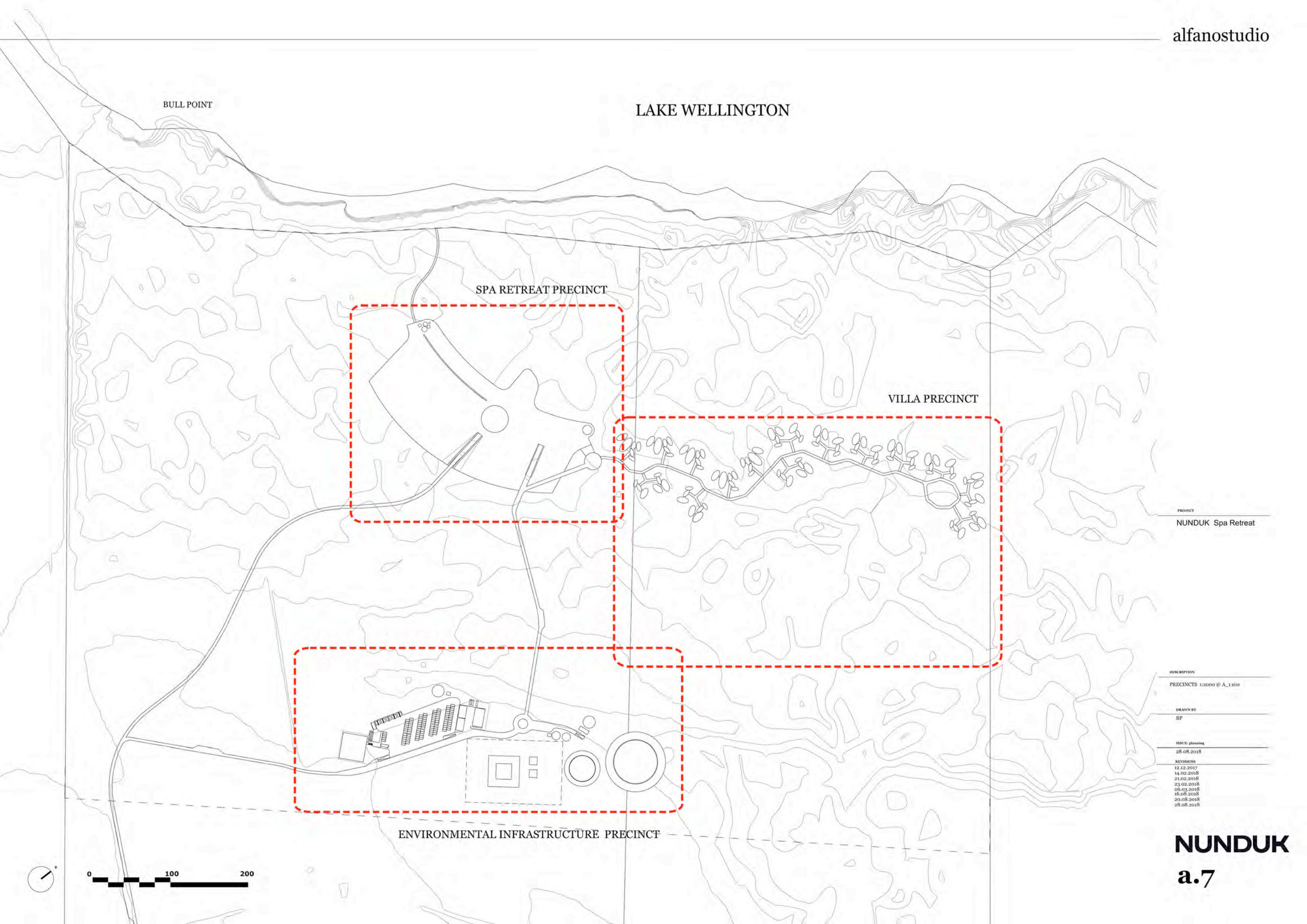
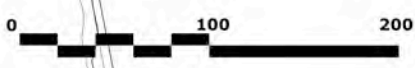
DESCRIPTION
PRECINCTS 1:2000 @ A_1 size

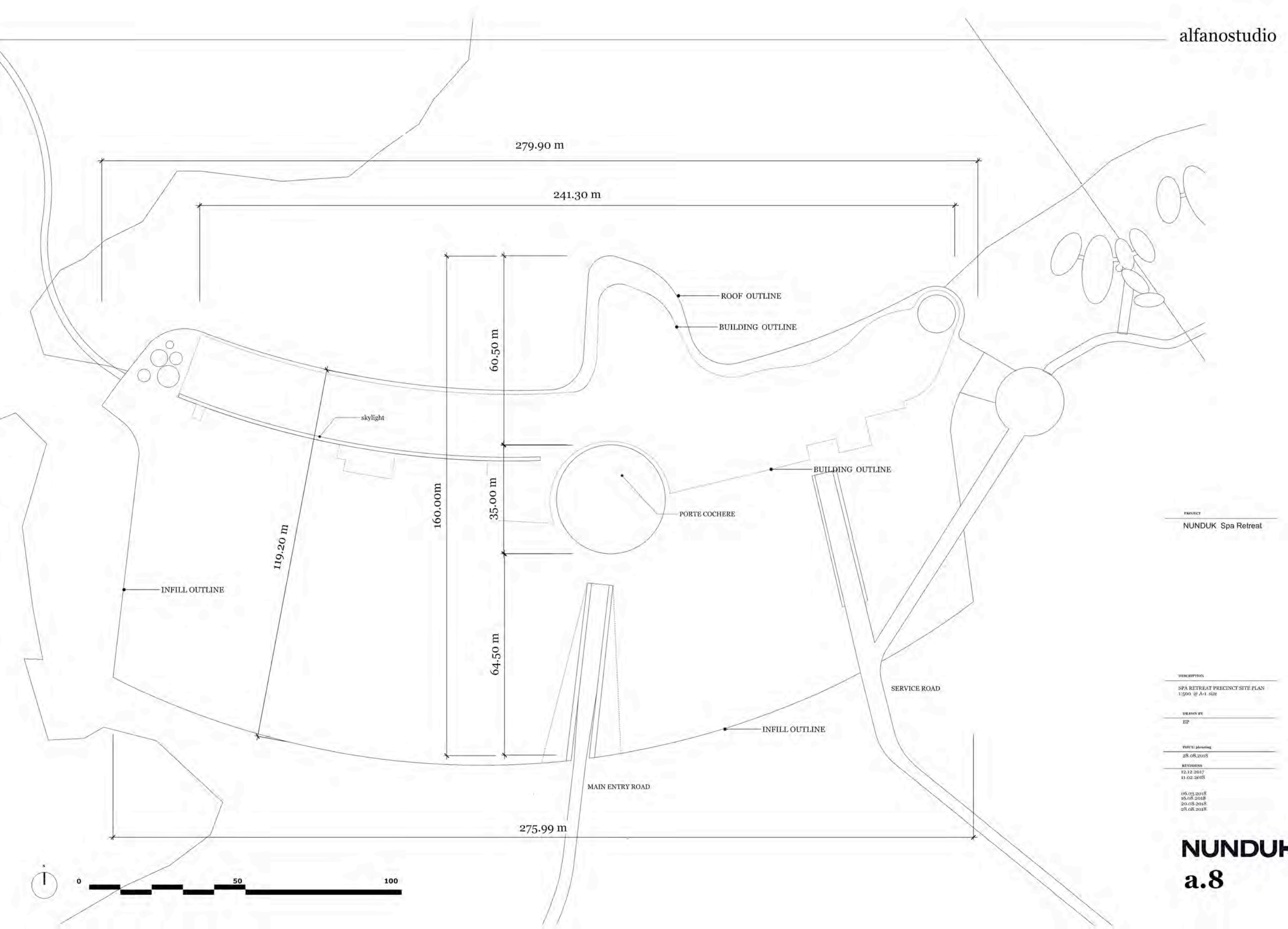
DRAWN BY
BP

ISSUE: planning
28.08.2018

REVISIONS
12.12.2017
14.02.2018
21.02.2018
23.02.2018
05.03.2018
16.03.2018
20.08.2018
28.08.2018

NUNDUK
a.7





PROJECT
 NUNDUK Spa Retreat

DESCRIPTION
 SPA RETREAT PRECINCT SITE PLAN
 1:500 @ A-1 size

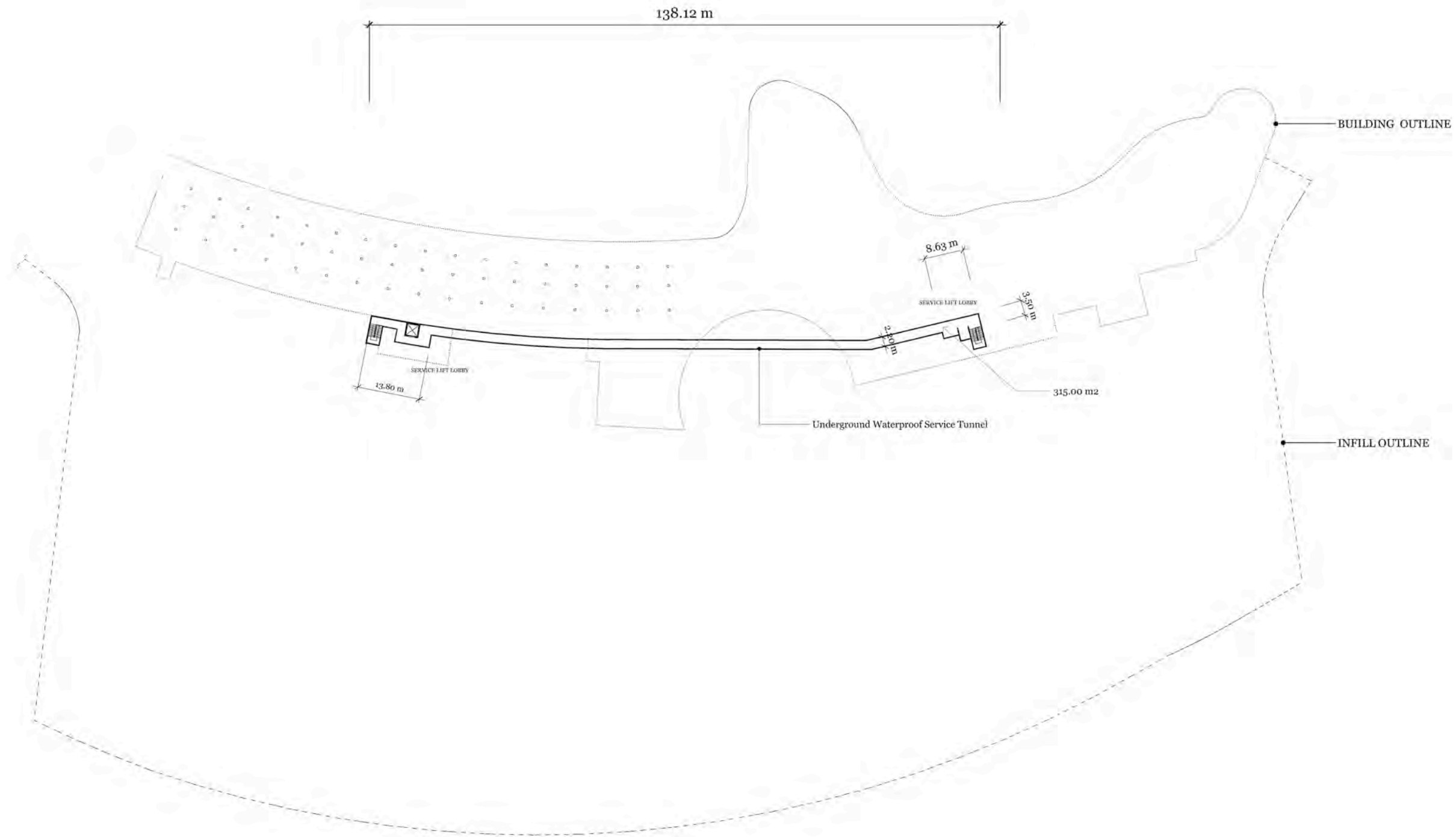
DRAWN BY
 BP

ISSUE planning
 28.08.2018
 REVISIONS
 12.12.2017
 11.02.2018

06.03.2018
 16.08.2018
 20.08.2018
 25.08.2018

NUNDUK
a.8

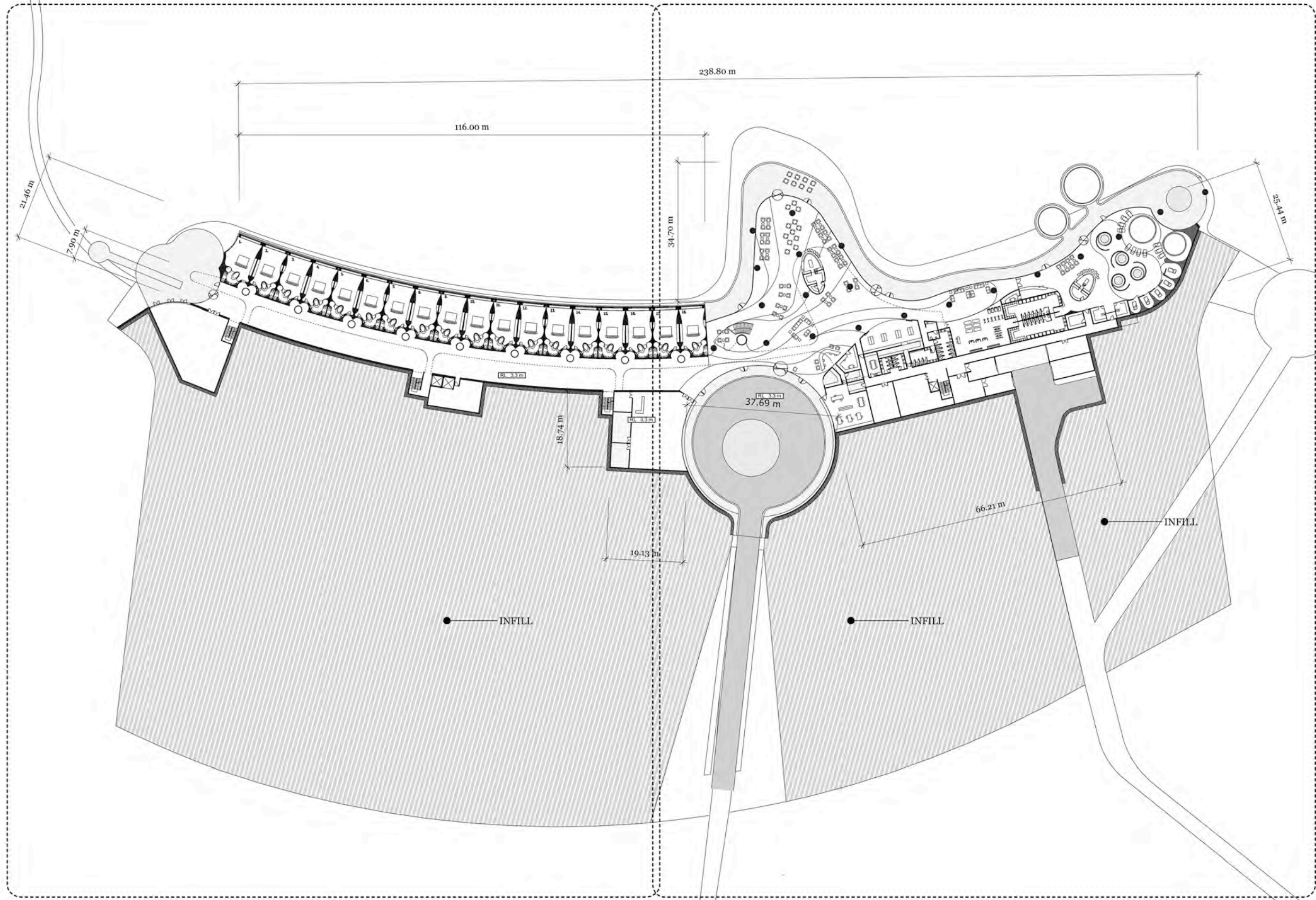




PROJECT
NUNDUK Spa Retreat

DESCRIPTION
UNDERGROUND SERVICE TUNEL 1:500 @ A-1 size
DRAWN BY BP
ISSUE planning 28.08.2018
REVISIONS 12.12.2017 11.02.2018
06.03.2018 16.08.2018 20.05.2018





PROJECT
NUNDUK Spa Retreat

DESCRIPTION
GROUND FLOOR 1:500 @ 1 A_1 size

DRAWN BY
BP

ISSUE: planning
28.08.2018

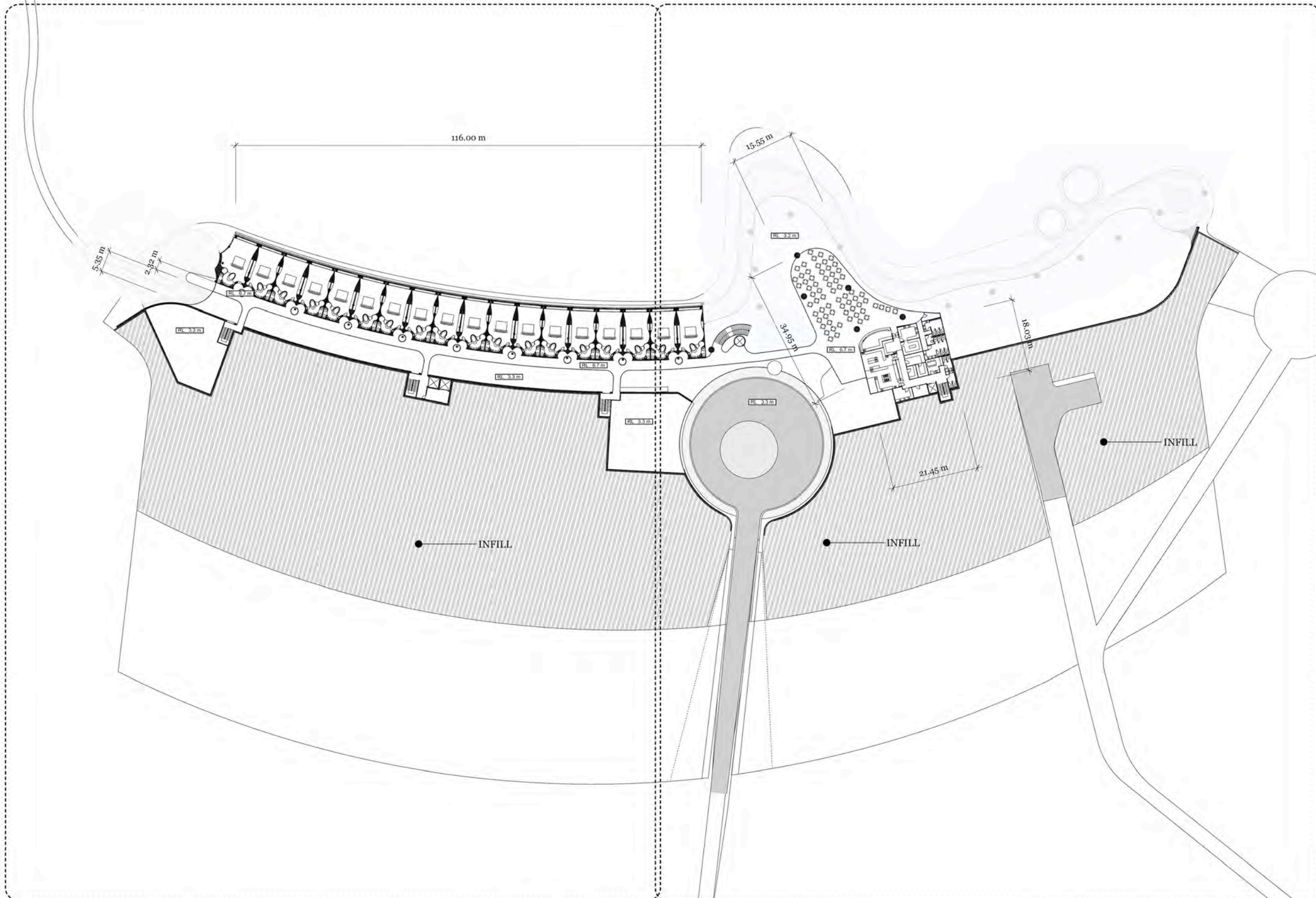
REVISIONS
12.12.2017
20.02.2018

06.03.2018
16.08.2018
20.08.2018
28.08.2018

DETAIL_A1

DETAIL_B1

NUNDUK
a.10



PROJECT
NUNDUK Spa Retreat

DESCRIPTION
FIRST FLOOR 1:500 @ A_1 size

DRAWN BY
BP

ISSUE: planning
28.08.2018

REVISIONS
12.12.2017
20.02.2018

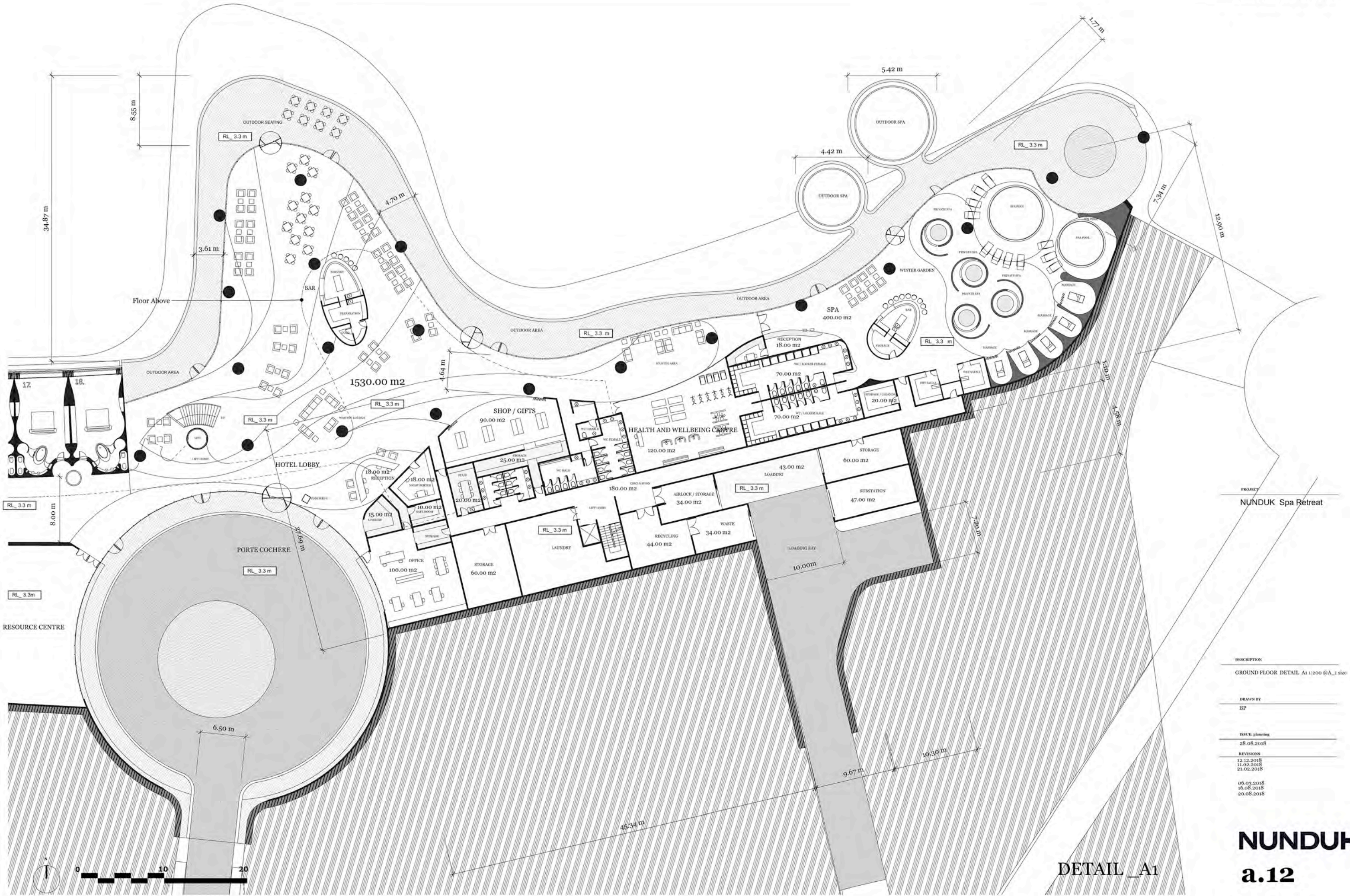
06.03.2018
16.08.2018
20.08.2018
28.08.2018



DETAIL_A2

DETAIL_B2

NUNDUK
a.11

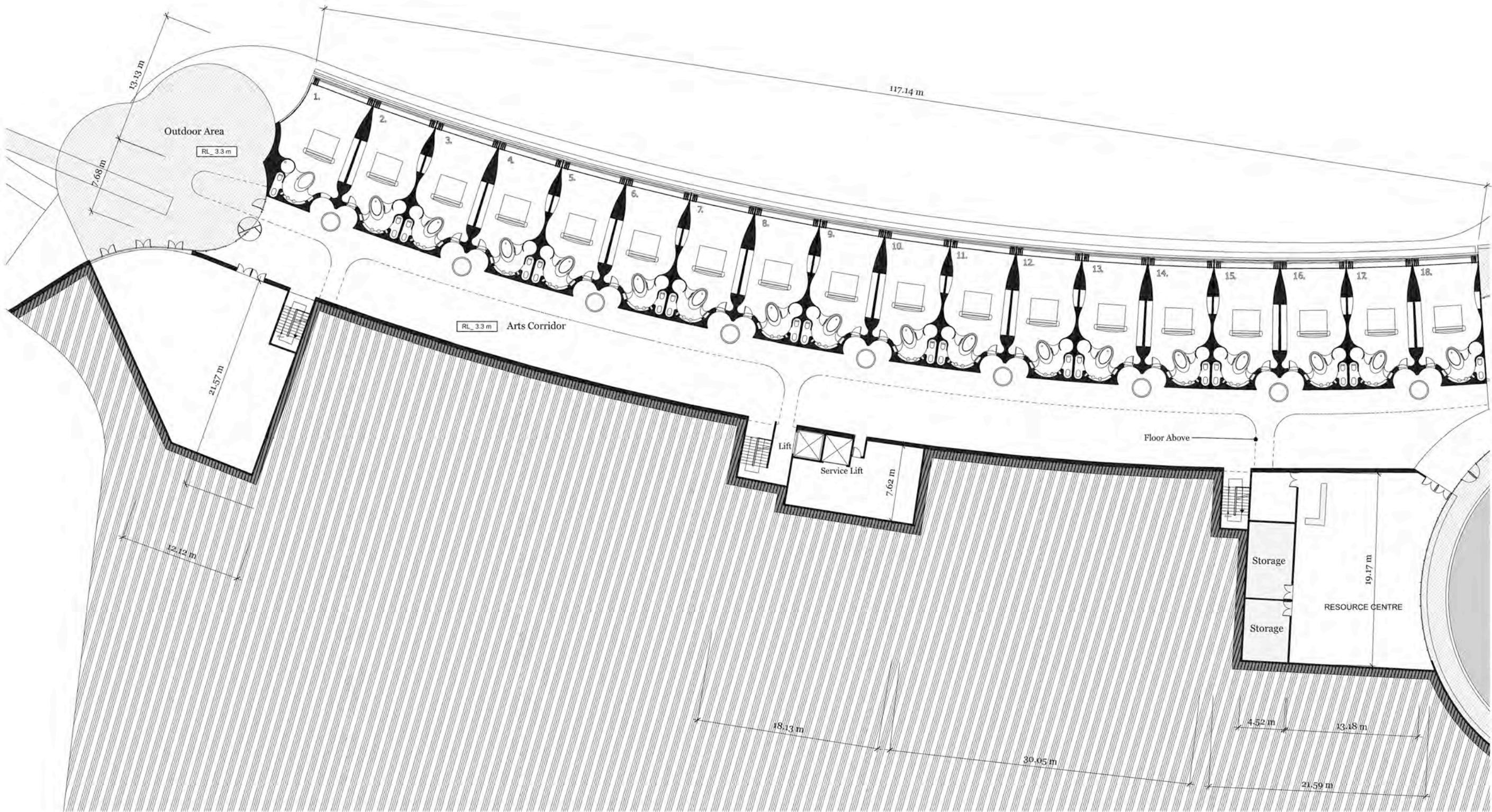


PROJECT
NUNDUK Spa Retreat

DESCRIPTION
GROUND FLOOR DETAIL A1 1:200 @A_1 size
DRAWN BY BP
ISSUE: planning 28.08.2018
REVISIONS 12.12.2018 11.02.2018 21.02.2018
05.03.2018 16.08.2018 20.08.2018

DETAIL_A1

NUNDUK
a.12



PROJECT
NUNDUK Spa Retreat

DESCRIPTION
GROUND FLOOR DETAIL B1 1:200 @A_1 size

DRAWN BY
BP

ISSUE: planning
28.08.2018

REVISIONS
12.12.2018
11.02.2018
21.02.2018

06.03.2018
16.08.2018
20.08.2018



DETAIL_B1

NUNDUK
a.13