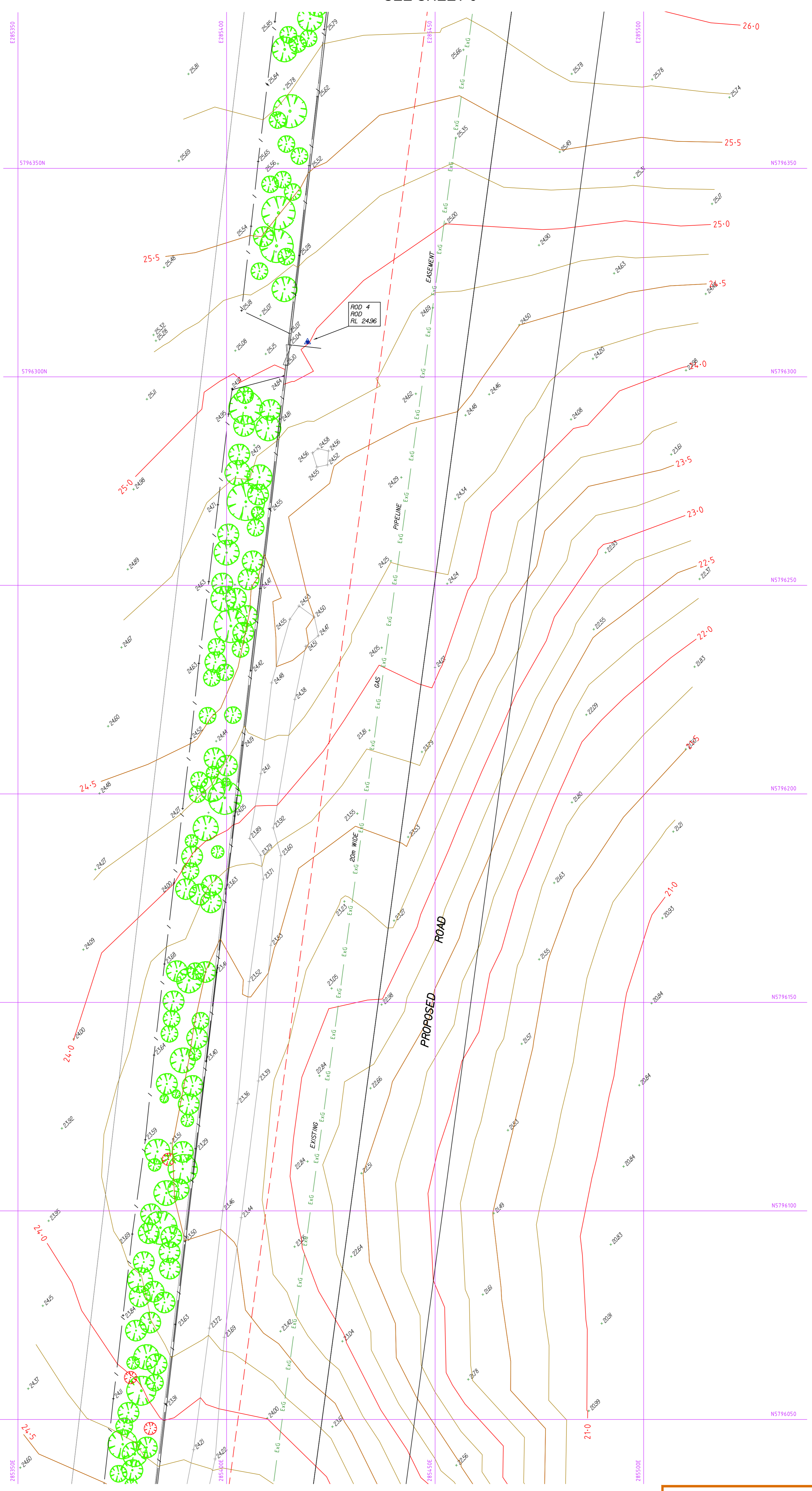


LEGEND

- Proposed Title Boundary
- - - Road Centreline
- Bitumen Edge
- Lane Marking
- - - Edge of Formation
- - - Centreline of Formation
- Toe of Bank
- Top of Bank
- Open Drain
- Back of Kerb
- Invert of Kerb
- Lip of Kerb
- ExT Existing Underground Telecommunication
- ExG Existing Underground Gas
- ExU Existing Underground Unclassified Utilities
- - - Easement
- Cadbase
- Fence
- Major Contour
- Minor Contour
- Edge of Vegetation
- SEP - Side Entry Pit
- Telecommunication Pit
- ⊕ Telecommunication Marker Post
- ⊕ Gas Marker Post
- ⊕ Tree
- ⊕ Dead Tree
- ⊕ Tap
- ⊕ Sign
- ⊕ Multiple Mounted Sign
- ⊕ Bollard
- ⊕ Fire Hydrant
- ⊕ Stop Valve
- ⊕ Water Meter
- ⊕ Gate
- ⊕ Elevation

LEVELS MAY EXIST THAT HAVE BEEN TURNED OFF FOR PLOTTING CLARITY



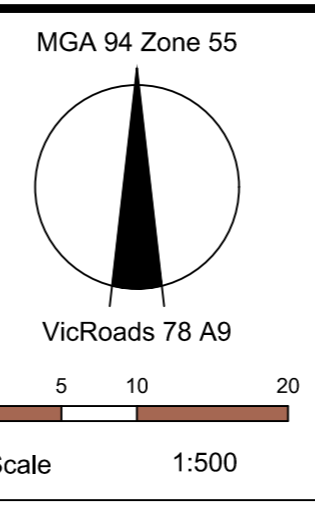
SEE SHEET 4

PRELIMINARY



REVISION	DATE	APPD
- Preliminary drawings	01/05/17	BM

NOTES:
 All parcel boundaries shown grey in this data are derived from Cadastral Map Base and are indicative only.
 All fences are Post & Wire unless otherwise specified.
 Exact location of utilities has not been proven and are based on DBYD information.
 Contour Interval: 0.25m
 Grid interval: 50m



Surveyed	L.Steiger & S.Matti	11th April 2017
Drawn	A. Auleebux	24th April 2017
Checked	B. Munari	1st May 2017
Approved	-	-

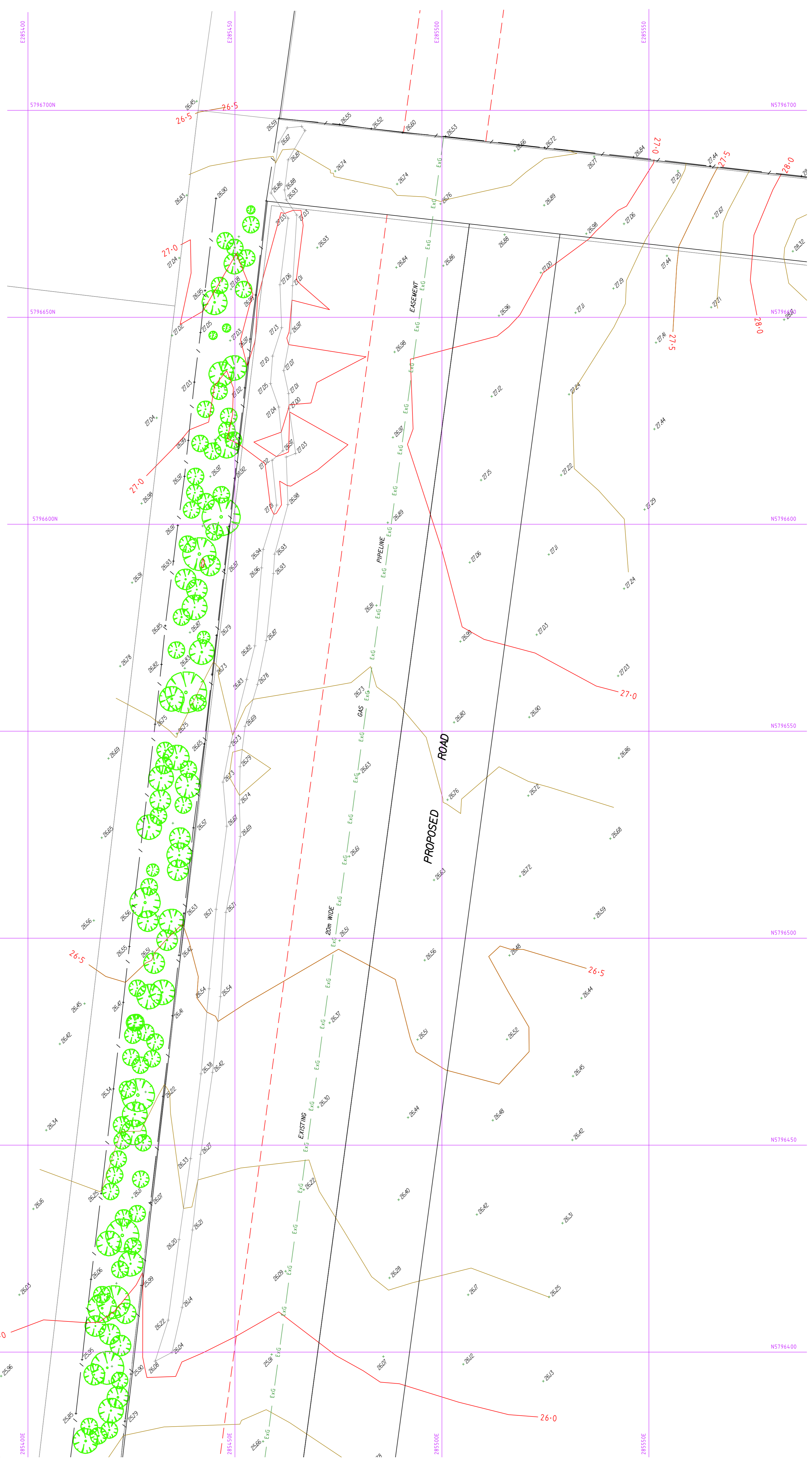
Feature And Level Survey
 Little River Road
 Little River

Melbourne Water Corporation Ref. SVY170022
Drawing No. SVY170022/5 **Rev -**
 Sheet No. 5 of 14 1900s65.dwg
 © SMEC Australia Pty Ltd ABN 47 065 475 149 A1

LEGEND

- Proposed Title Boundary
- Road Centreline
- Bitumen Edge
- Lane Marking
- Edge of Formation
- Centreline of Formation
- Toe of Bank
- Top of Bank
- Open Drain
- Back of Kerb
- Invert of Kerb
- Lip of Kerb
- ExT Existing Underground Telecommunication
- ExG Existing Underground Gas
- ExU Existing Underground Unclassified Utilities
- Easement
- Cadbase
- Fence
- Major Contour
- Minor Contour
- Edge of Vegetation
- SEP - Side Entry Pit
- Telecommunication Pit
- Telecommunication Marker Post
- Gas Marker Post
- Tree
- Dead Tree
- Tap
- Sign
- Multiple Mounted Sign
- Bollard
- Fire Hydrant
- Stop Valve
- Water Meter
- Gate
- Elevation

LEVELS MAY EXIST THAT HAVE BEEN TURNED OFF FOR PLOTTING CLARITY



SEE SHEET 7

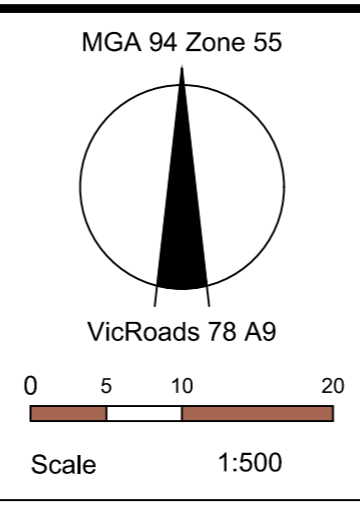
SEE SHEET 5

PRELIMINARY



REVISION	DATE	APPD
- Preliminary drawings	01/05/17	BM

NOTES:
 All parcel boundaries shown grey in this data are derived from Cadastral Map Base and are indicative only.
 All fences are Post & Wire unless otherwise specified.
 Exact location of utilities has not been proven and are based on DBYD information.
 Contour Interval: 0.25m
 Grid interval: 50m



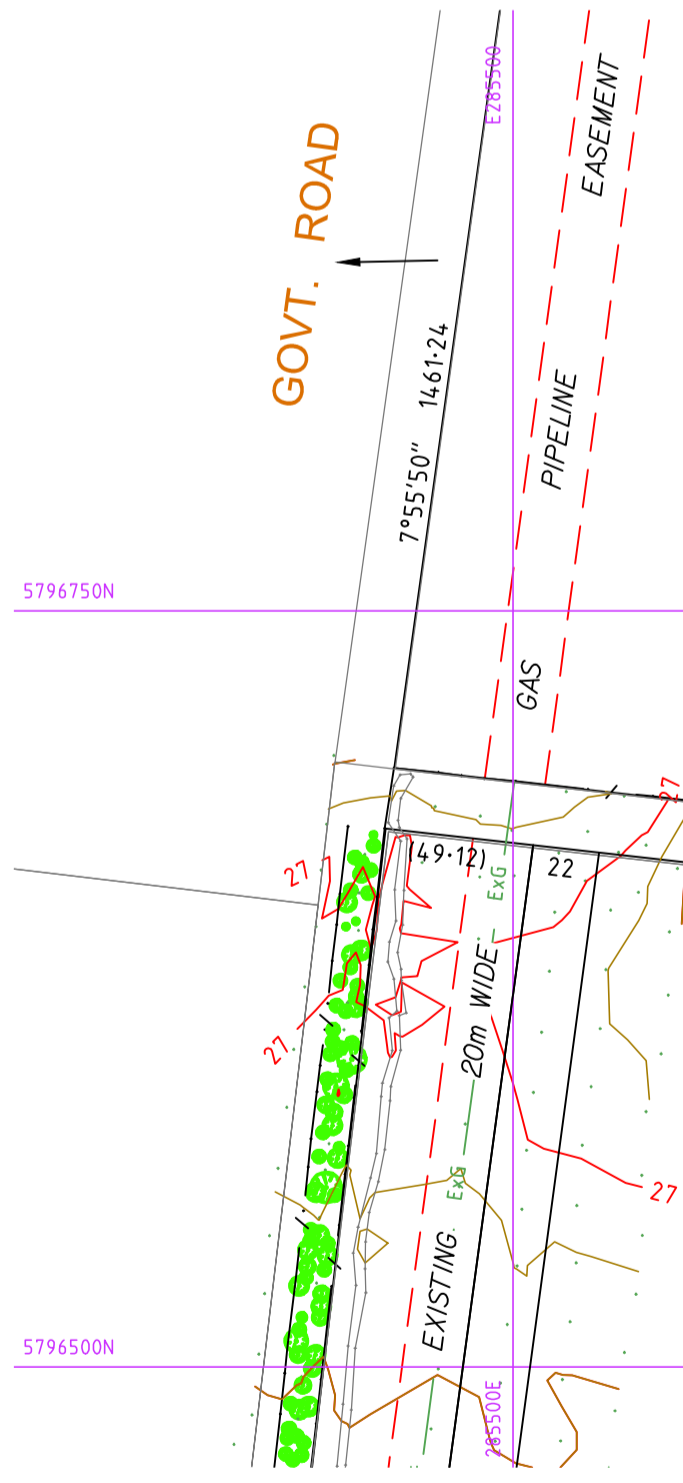
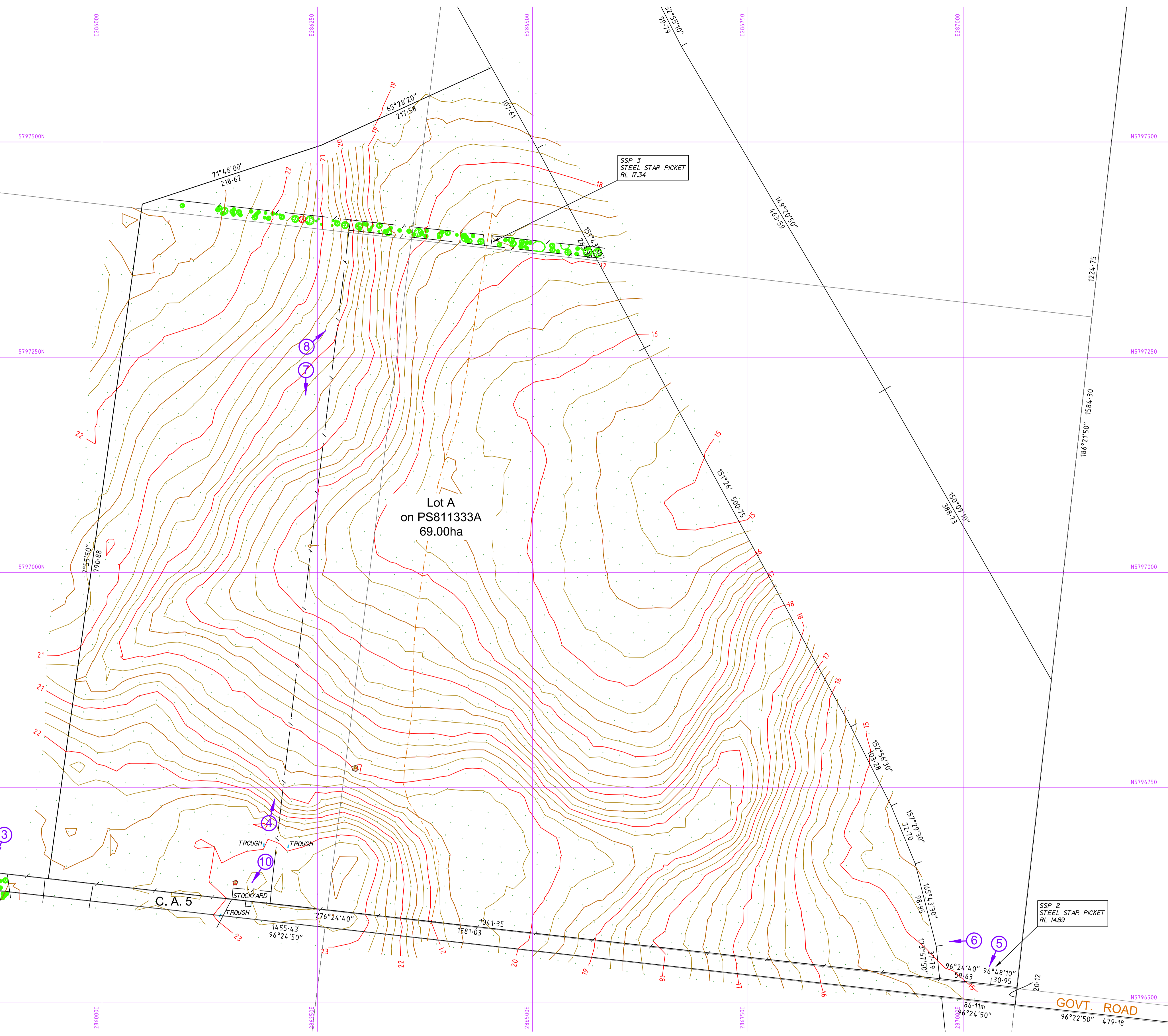
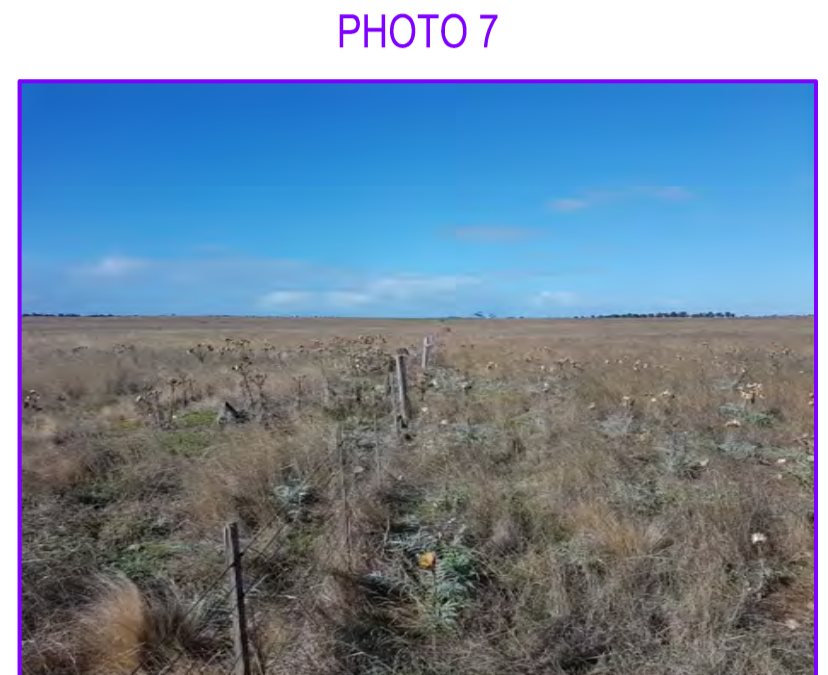
MGA 94 Zone 55		
VicRoads 78 A9		
Scale 1:500		
Melbourne Survey T 9869 0813 F 9869 0901		
Surveyed	L.Steiger & S.Matti	11th April 2017
Drawn	A. Auleebux	24th April 2017
Checked	B. Munari	1st May 2017
Approved	-	-

Feature And Level Survey
 Little River Road
 Little River

Melbourne Water Corporation Ref. SVY170022
Drawing No. SVY170022/6 **Rev -**
 Sheet No. 6 of 14 1900s65.dwg
 © SMEC Australia Pty Ltd ABN 47 065 475 149 A1

LEGEND

- Proposed Title Boundary
- Road Centreline
- Bitumen Edge
- Lane Marking
- Edge of Formation
- Centreline of Formation
- Toe of Bank
- Top of Bank
- Open Drain
- Back of Kerb
- Invert of Kerb
- Lip of Kerb
- ExT Existing Underground Telecommunication
- ExG Existing Underground Gas
- ExU Existing Underground Unclassified Utilities
- Easement
- Cadbase
- Fence
- Major Contour
- Minor Contour
- Edge of Vegetation
- SEP - Side Entry Pit
- Telecommunication Pit
- Telecommunication Marker Post
- Gas Marker Post
- Tree
- Dead Tree
- Tap
- Sign
- Multiple Mounted Sign
- Bollard
- Fire Hydrant
- Stop Valve
- Water Meter
- Gate
- Elevation



SEE SHEET 6

SEE SHEET 1



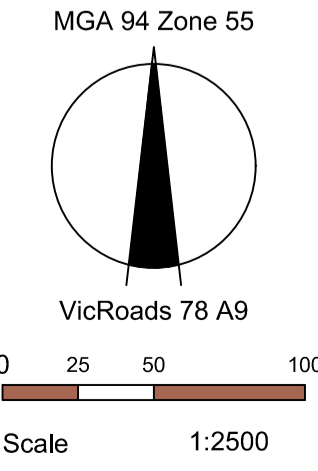
REVISION	DATE	APPD
- Initial Release	01/05/17	BM

NOTES:
 All parcel boundaries shown grey in this data are derived from Cadastral Map Base and are indicative only.
 All fences are Post & Wire unless otherwise specified.
 Exact location of utilities has not been proven and are based on DBYD information.
 Contour Interval: 0.25m
 Grid interval: 250m

LEVELS MAY EXIST THAT HAVE BEEN TURNED OFF FOR PLOTTING CLARITY

01 INDICATES PHOTOGRAPH DIRECTION AND NUMBER

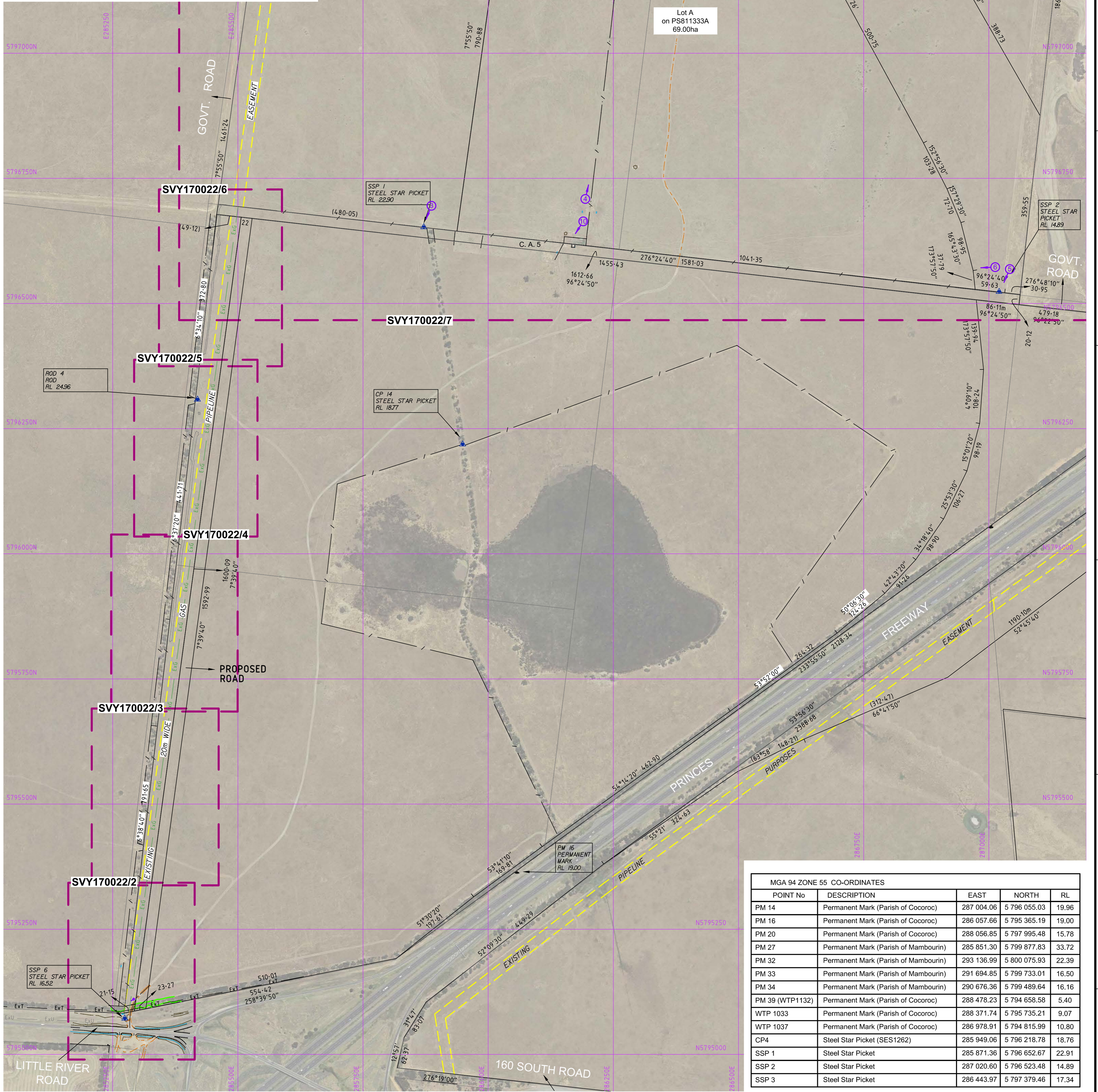
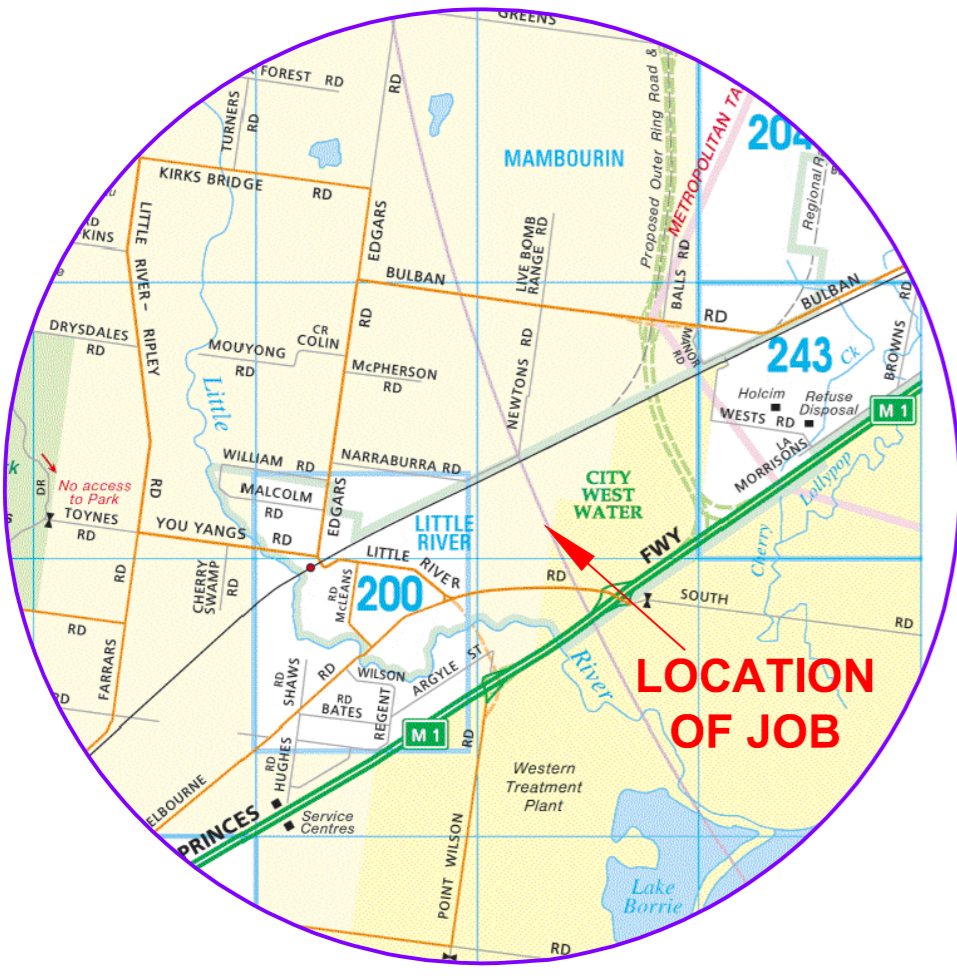
PRELIMINARY



Role	Name	Date
Surveyed	L. Steiger & S. Matti	11th April 2017
Drawn	A. Auleebux	24th April 2017
Checked	B. Munari	1st May 2017
Approved	-	-

Feature And Level Survey
 Little River Road
 Little River

Melbourne Water Corporation Ref. SVY170022
Drawing No. SVY170022/7 Rev -
 Sheet No. 7 of 14 1900s65.dwg
 © SMC Australia Pty Ltd ABN 47 065 475 149 A1



MGA 94 ZONE 55 CO-ORDINATES				
POINT No	DESCRIPTION	EAST	NORTH	RL
PM 14	Permanent Mark (Parish of Cocoroc)	287 004.06	5 796 055.03	19.96
PM 16	Permanent Mark (Parish of Cocoroc)	286 057.66	5 795 365.19	19.00
PM 20	Permanent Mark (Parish of Cocoroc)	288 056.85	5 797 995.48	15.78
PM 27	Permanent Mark (Parish of Mambourin)	285 851.30	5 799 877.83	33.72
PM 32	Permanent Mark (Parish of Mambourin)	293 136.99	5 800 075.93	22.39
PM 33	Permanent Mark (Parish of Mambourin)	291 694.85	5 799 733.01	16.50
PM 34	Permanent Mark (Parish of Mambourin)	290 676.36	5 799 489.64	16.16
PM 39 (WTP1132)	Permanent Mark (Parish of Cocoroc)	288 478.23	5 794 658.58	5.40
WTP 1033	Permanent Mark (Parish of Cocoroc)	288 371.74	5 795 735.21	9.07
WTP 1037	Permanent Mark (Parish of Cocoroc)	286 978.91	5 794 815.99	10.80
CP4	Steel Star Picket (SES1262)	285 949.06	5 796 218.78	18.76
SSP 1	Steel Star Picket	285 871.36	5 796 652.67	22.91
SSP 2	Steel Star Picket	287 020.60	5 796 523.48	14.89
SSP 3	Steel Star Picket	286 443.97	5 797 379.46	17.34

DATUM:
MGA 94 Zone 55 vide VRSNow observations.

NOTATION:
For full description of lots and title boundary dimensions, refer to proposed Plan of Subdivision PS811333A.

Varying combined scale factor applied - calculated from MGA 94 Zone 55 projection.
Adopted survey coordinates may differ from current published values.

Check to PM14, PM16, PM20 & PM39 (Parish of Cocoroc), PM27, PM32, PM33 & PM34 (Parish of Mambourin) and WTP1033, WTP1037 & WTP1132 (Melbourne Water - Western Treatment Plant Controls).
AHD vide PM14 (Parish of Cocoroc) 19.957 (SMES 6/3/17) with check to PM20 (Parish of Cocoroc), PM27, PM33 & PM38 (Parish of Mambourin) and WTP1037 & WTP1132 (Melbourne Water - Western Treatment Plant Controls).

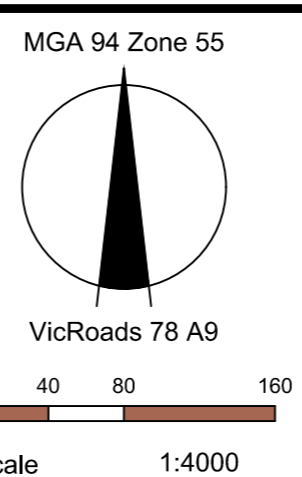
PRELIMINARY

LEVELS MAY EXIST THAT HAVE BEEN
TURNED OFF FOR PLOTTING CLARITY



REVISION	DATE	APPD
- Preliminary drawings	01/05/17	BM

NOTES:
All parcel boundaries shown grey in this data are derived from Cadastral Map Base and are indicative only.
All fences are Post & Wire unless otherwise specified.
Exact location of utilities has not been proven and are based on DBYD information.
Grid interval: 250m



Surveyed L.Steiger & S.Matti 11th April 2017
Drawn A. Auleebux 24th April 2017
Checked B. Munari 1st May 2017
Approved - - -

Feature And Level Survey
Little River Road
Little River

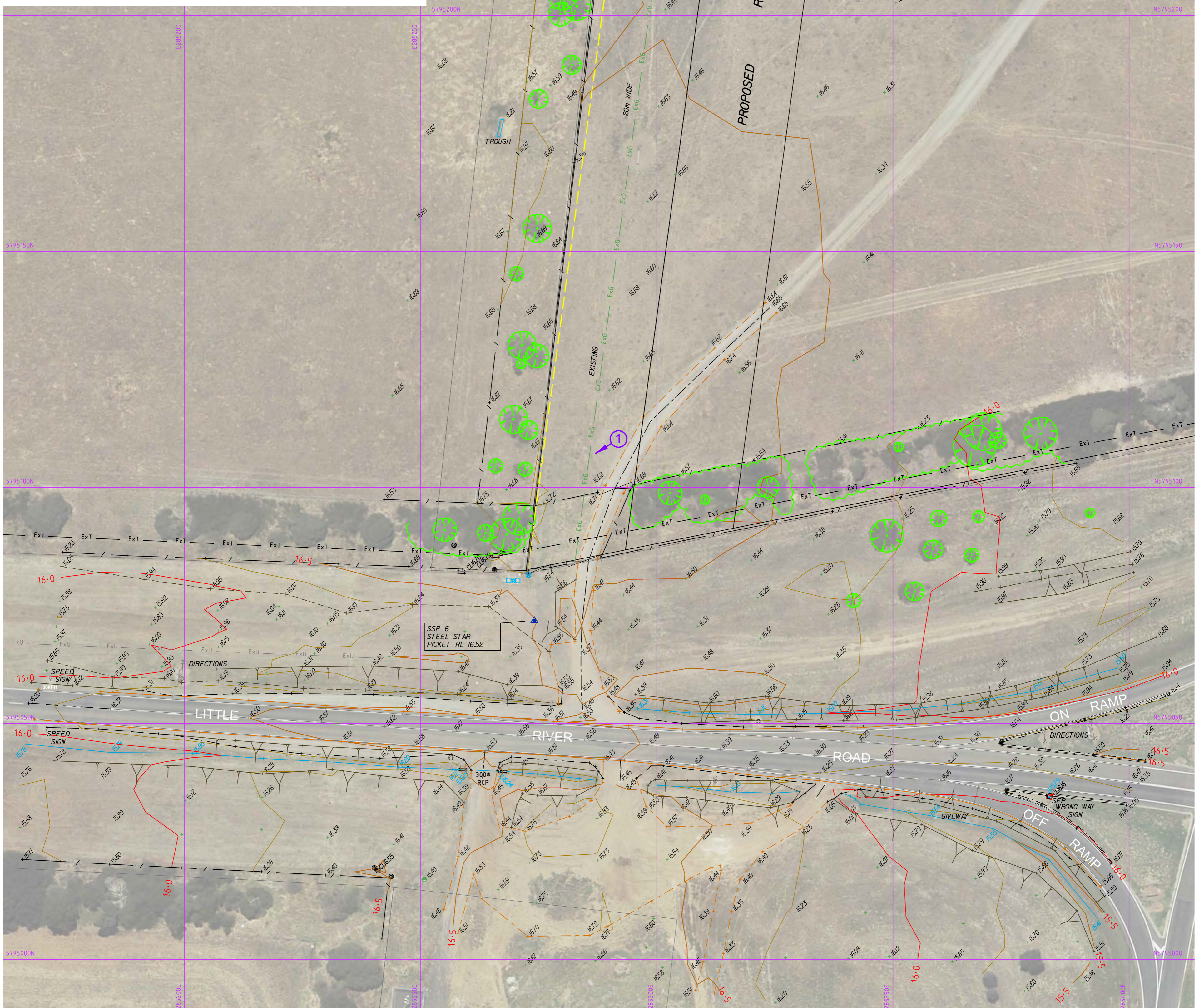
Melbourne Water Corporation Ref. SVY170022
Drawing No. SVY170022/8 Rev -
Sheet No. 8 of 14 1900s65.dwg
© SMEC Australia Pty Ltd ABN 47 065 475 149 A1

LEGEND	
	Proposed Title Boundary
	Road Centreline
	Bitumen Edge
	Lane Marking
	Edge of Formation
	Centreline of Formation
	Toe of Bank
	Top of Bank
	Open Drain
	Back of Kerb
	Invert of Kerb
	Lip of Kerb
	Existing Underground Telecommunication
	Existing Underground Gas
	Existing Underground Unclassified Utilities
	Easement
	Cadbase
	Fence
	Major Contour
	Minor Contour
	Edge of Vegetation
	SEP - Side Entry Pit
	Telecommunication Pit
	Telecommunication Marker Post
	Gas Marker Post
	Tree
	Dead Tree
	Tap
	Sign
	Multiple Mounted Sign
	Bollard
	Fire Hydrant
	Stop Valve
	Water Meter
	Gate
	Elevation

LEVELS MAY EXIST THAT HAVE BEEN TURNED OFF FOR PLOTTING CLARITY

01 INDICATES PHOTOGRAPH DIRECTION AND NUMBER

PHOTO 1

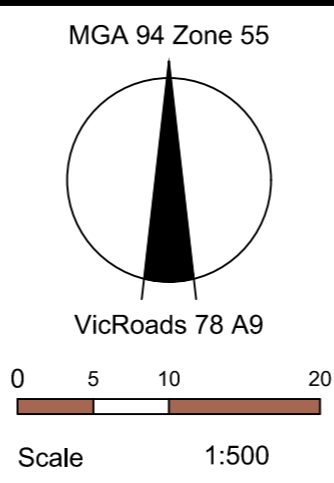


PRELIMINARY



REVISION	DATE	APPD
- Preliminary drawings	01/05/17	BM

NOTES:
 All parcel boundaries shown grey in this data are derived from Cadastral Map Base and are indicative only.
 All fences are Post & Wire unless otherwise specified.
 Exact location of utilities has not been proven and are based on DBYD information.
 Contour Interval: 0.25m
 Grid interval: 50m



Surveyed	L.Steiger & S.Matti	11th April 2017
Drawn	A. Auleebux	24th April 2017
Checked	B. Munari	1st May 2017
Approved	-	-

Feature And Level Survey
 Little River Road
 Little River

Melbourne Water Corporation Ref. SVY170022
Drawing No. SVY170022/9
 Sheet No. 9 of 14
 © SMEC Australia Pty Ltd ABN 47 065 475 149

Rev -
 1900s65.dwg
 A1