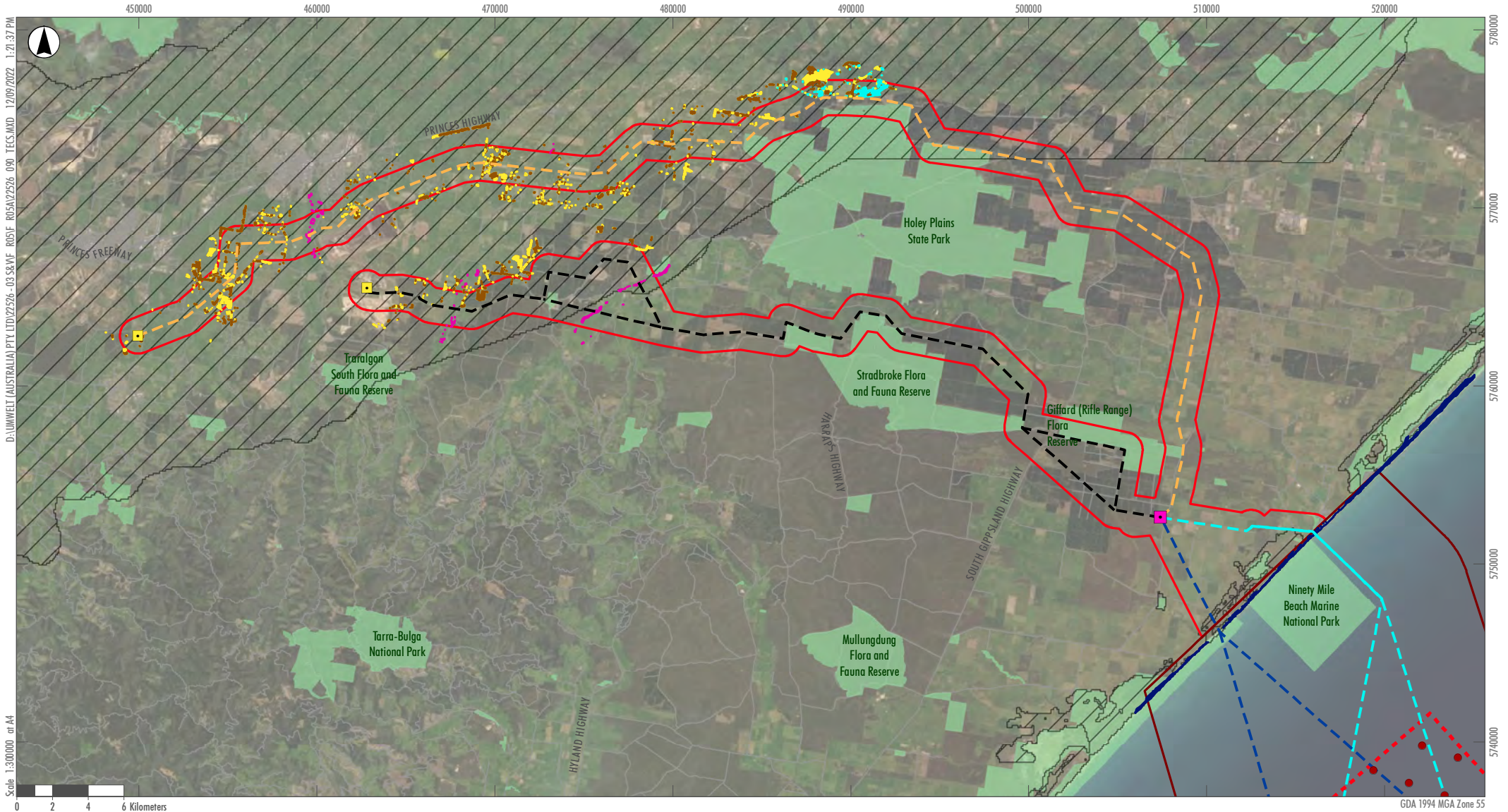


Legend

- | | | | |
|------------------------------|--|-------------------------------|-------------------------------|
| Offshore Study Area boundary | Greater Gippsland Offshore Wind Project Area | Potential turbine layout | EPBC threatened fauna species |
| Onshore Study Area boundary | Overhead transmission route option 1a and 1b | Existing onshore substation | FFG threatened fauna species |
| | Overhead transmission route option 2 | Indicative onshore substation | Road |
| | Subsea cabling option 1 | | |
| | Subsea cabling option 2 | | |

Image Source: ESRI Basemap (2022) Data source: VIC Data (2022); DELWP (2022); Biosis (2022)

FIGURE 13
Threatened fauna records



Legend

- Offshore Study Area boundary
- Onshore Study Area boundary

Greater Gippsland Offshore Wind Project Area consists of:

- Greater Gippsland Offshore Wind Project Area
- Overhead transmission route option 1a and 1b
- Overhead transmission route option 2
- Subsea cabling option 1
- Subsea cabling option 2

- Potential turbine layout
- Existing onshore substation
- Indicative onshore substation
- Road

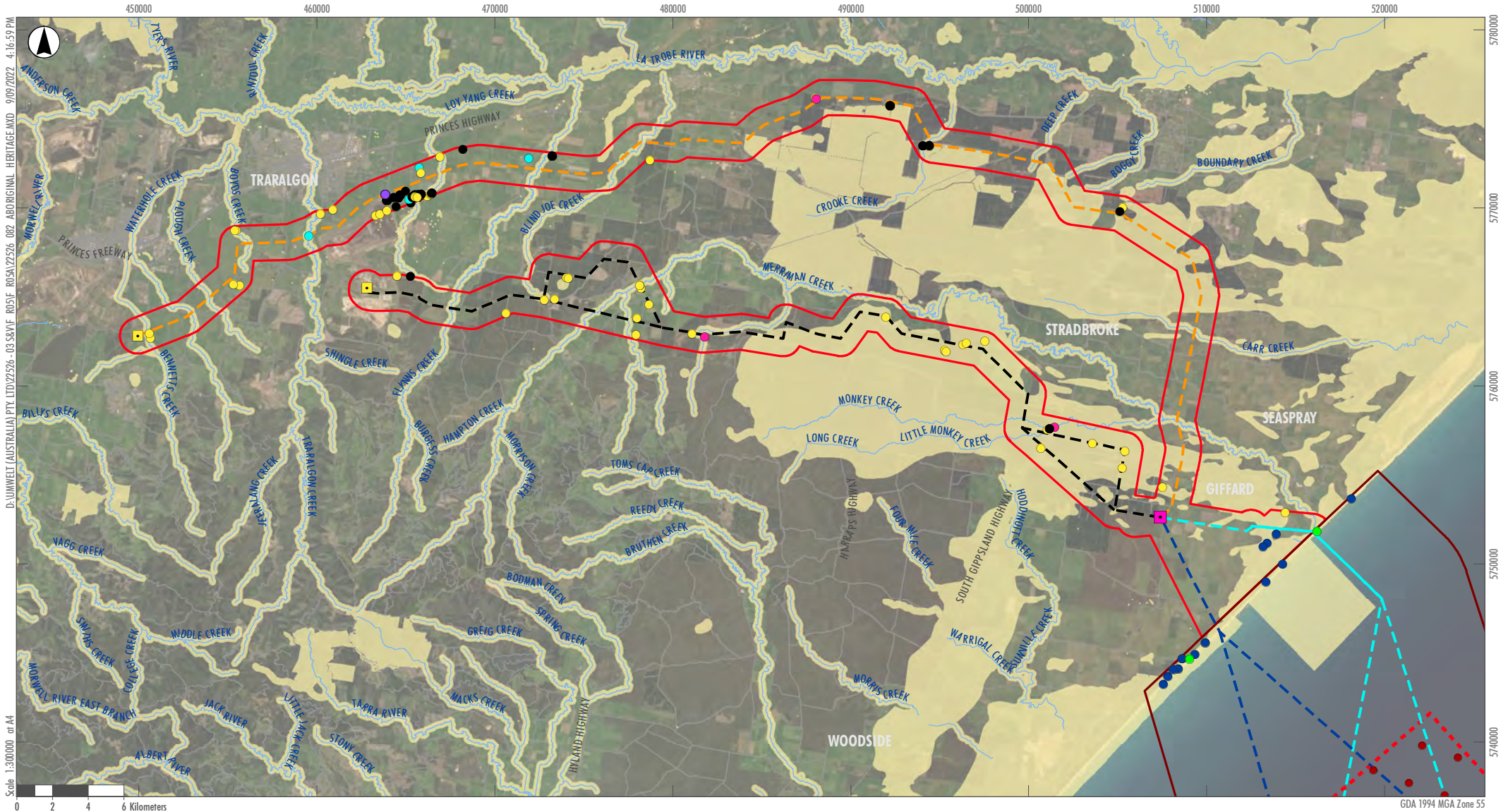
EPBC ecological communities of national significance

FFG threatened ecological communities

- 242, Forest Red Gum Grassy Woodland

- 243, Central Gippsland Plains Grassland
- 244, Plains Grassland (South Gippsland)
- 339, Sedge-rich Eucalyptus camphora Swamp
- 460, Coastal Moonah Woodland

FIGURE 14
TECs



Legend

- Offshore Study Area boundary
- Onshore Study Area boundary
- Greater Gippsland Offshore Wind Project Area
- Overhead transmission route option 1a and 1b
- Overhead transmission route option 2
- Subsea cabling option 1
- Subsea cabling option 2
- Potential turbine layout
- Existing onshore substation
- Indicative onshore substation
- Road
- Drainage line
- Cultural Heritage Sensitivity
- Registered Aboriginal Places**
- Aboriginal Ancestral Remains (Burial)
- Artefact Scatter
- Earth Feature
- Low Density Artefact Distribution
- Object Collection
- Scarred Tree
- Shell Midden

Image Source: ESRI Basemap (2022) Data source: VIC Data (2022); DELWP (2022)

FIGURE 15
Aboriginal Cultural Heritage within the Study Area

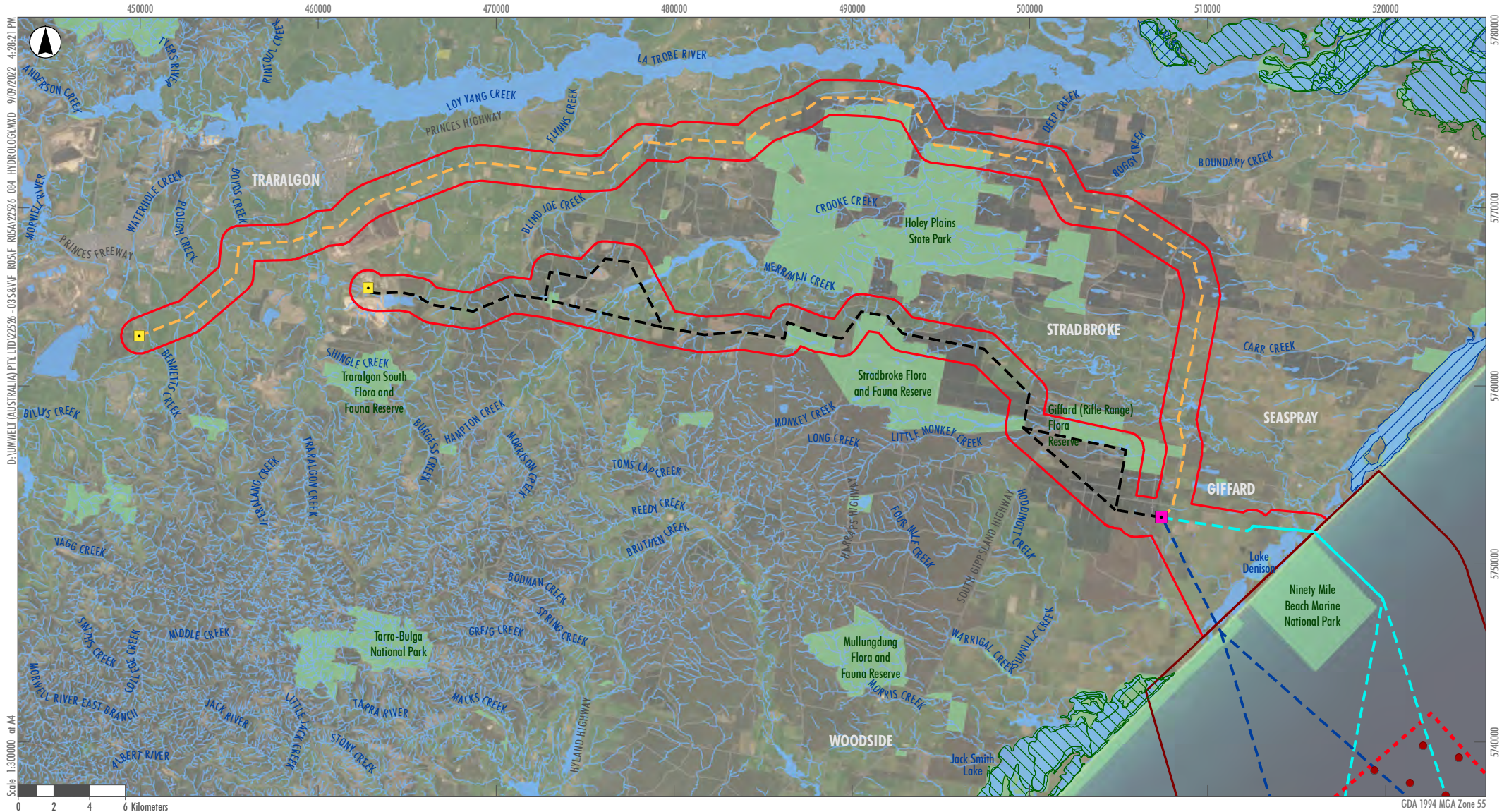


Legend

- Offshore Study Area boundary
- Onshore Study Area boundary
- Greater Gippsland Offshore Wind Project Area
- Overhead transmission route option 1a and 1b
- Overhead transmission route option 2
- Subsea cabling option 1
- Subsea cabling option 2
- Existing onshore substation
- Indicative onshore substation
- Potential turbine layout
- Substation
- State Forest, National Parks, Reserves
- Road
- Drainage line
- Latrobe Planning Scheme Heritage Overlay
- Wellington Planning Scheme Heritage Overlay
- Victorian Heritage Inventory
- Victorian Heritage Register
- Shipwreck Exclusion Zone
- Australasian Underwater Cultural Heritage Database (AUCHD)
- ▲ Shipwrecks

Image Source: ESRI Basemap (2022) Data source: VIC Data (2022)

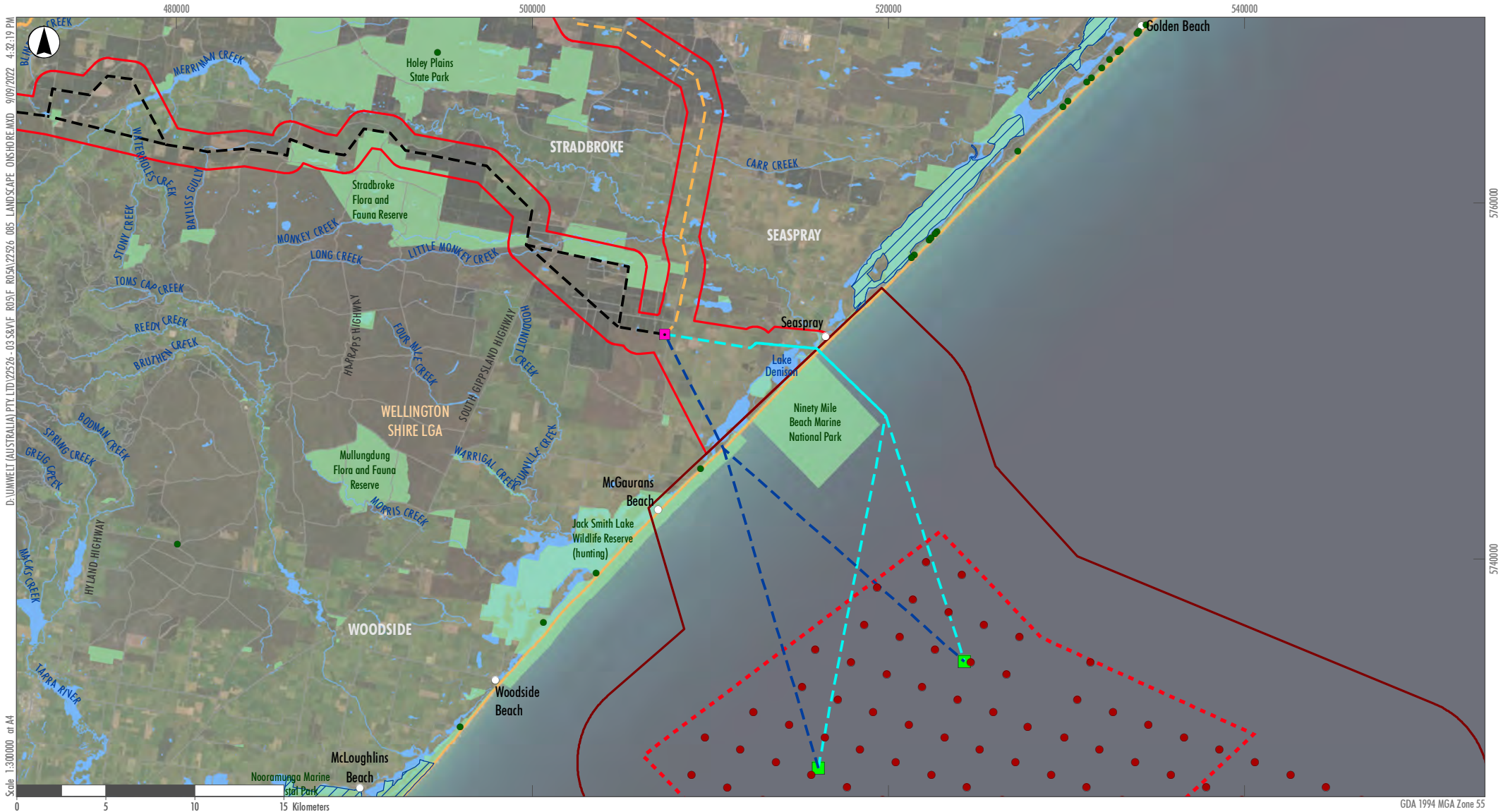
FIGURE 16
Non-Aboriginal Cultural Heritage Values



- Legend**
- Offshore Study Area boundary
 - Onshore Study Area boundary
 - Greater Gippsland Offshore Wind Project Area
 - Overhead transmission route option 1a and 1b
 - Overhead transmission route option 2
 - Subsea cabling option 1
 - Subsea cabling option 2
 - Potential turbine layout
 - Existing onshore substation
 - Indicative onshore substation
 - DELWP Mapped Wetlands
 - Gippsland Lakes Ramsar Site
 - Waterbodies
 - Road
 - Drainage line

Image Source: ESRI Basemap (2022) Data source: VIC Data (2022); DELWP (2022)

FIGURE 17
Hydrology within the Study Area

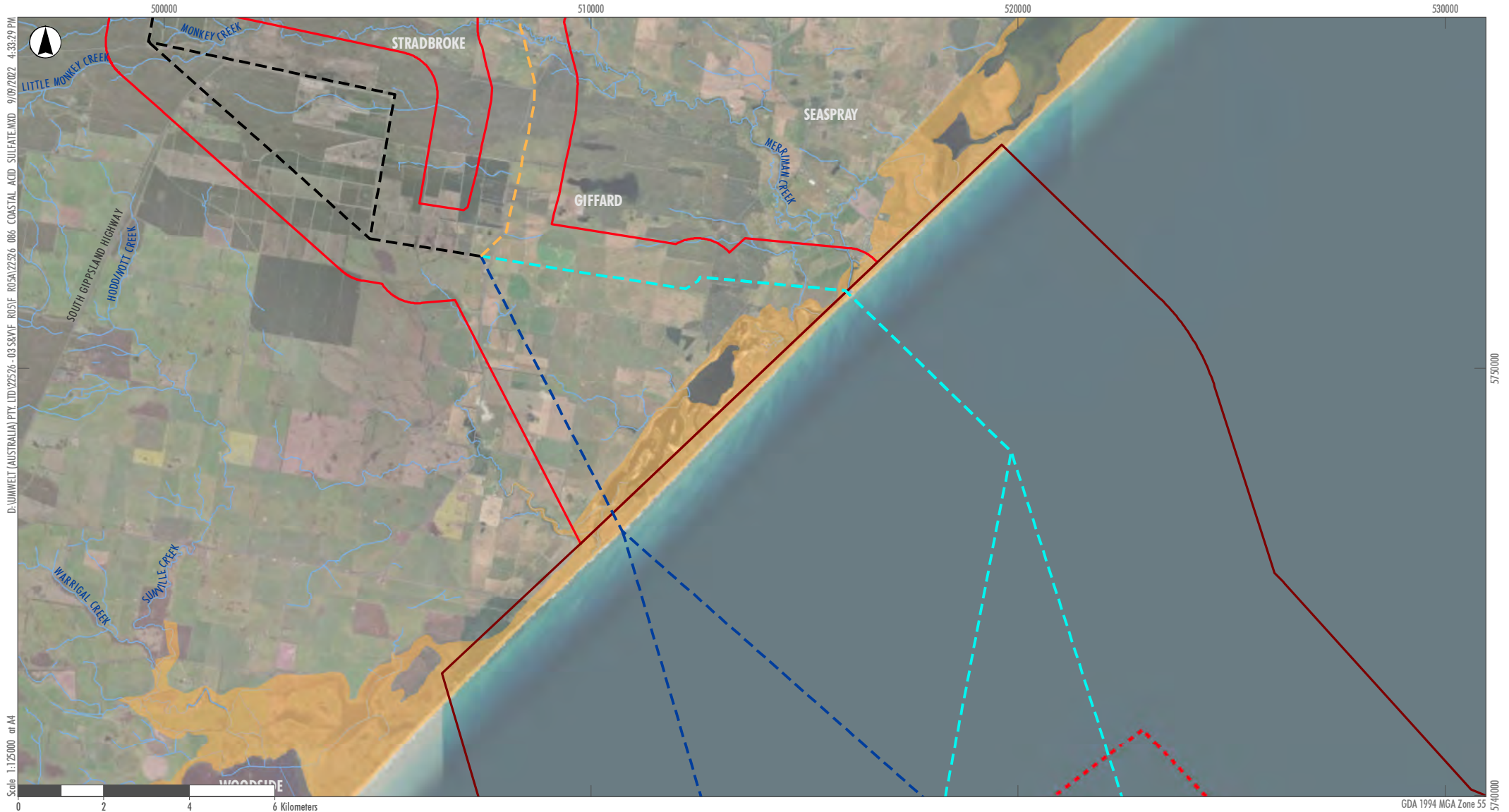


Legend

- | | | | |
|------------------------------|--|-------------------------------|--|
| Offshore Study Area boundary | Greater Gippsland Offshore Wind Project Area consists of: | RAMSAR Sites | Local Government boundary |
| Onshore Study Area boundary | Greater Gippsland Offshore Wind Project Boundary | Substation | State Forest, National Parks, Reserves |
| | Overhead transmission route option 1a and 1b | Indicative onshore substation | Road |
| | Overhead transmission route option 2 | Potential turbine layout | Drainage line |
| | Subsea cabling option 1 | Campgrounds | |
| | Subsea cabling option 2 | | |

Image Source: ESRI Basemap (2022) Data source: VIC Data (2022)

FIGURE 18
Onshore Landscape and Visual Existing Conditions



- Legend**
- Offshore Study Area boundary
 - Onshore Study Area boundary
 - Greater Gippsland Offshore Wind Project Boundary
 - Overhead transmission route option 1a and 1b
 - Overhead transmission route option 2
 - Subsea cabling option 1
 - Subsea cabling option 2
 - Prospective Coastal Acid Sulfate Soils
 - Road
 - Drainage line

FIGURE 19
Coastal Acid Sulfate Soils