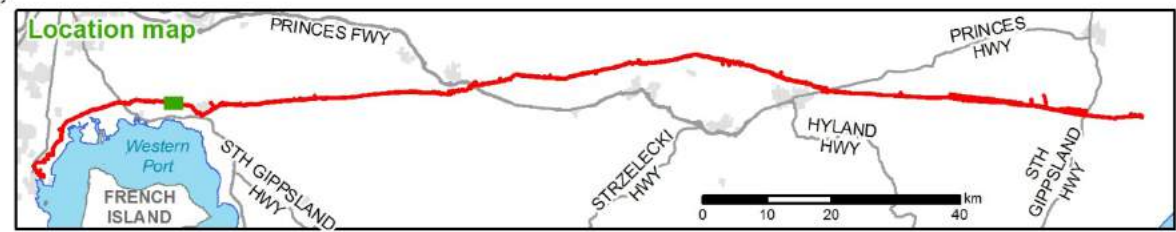
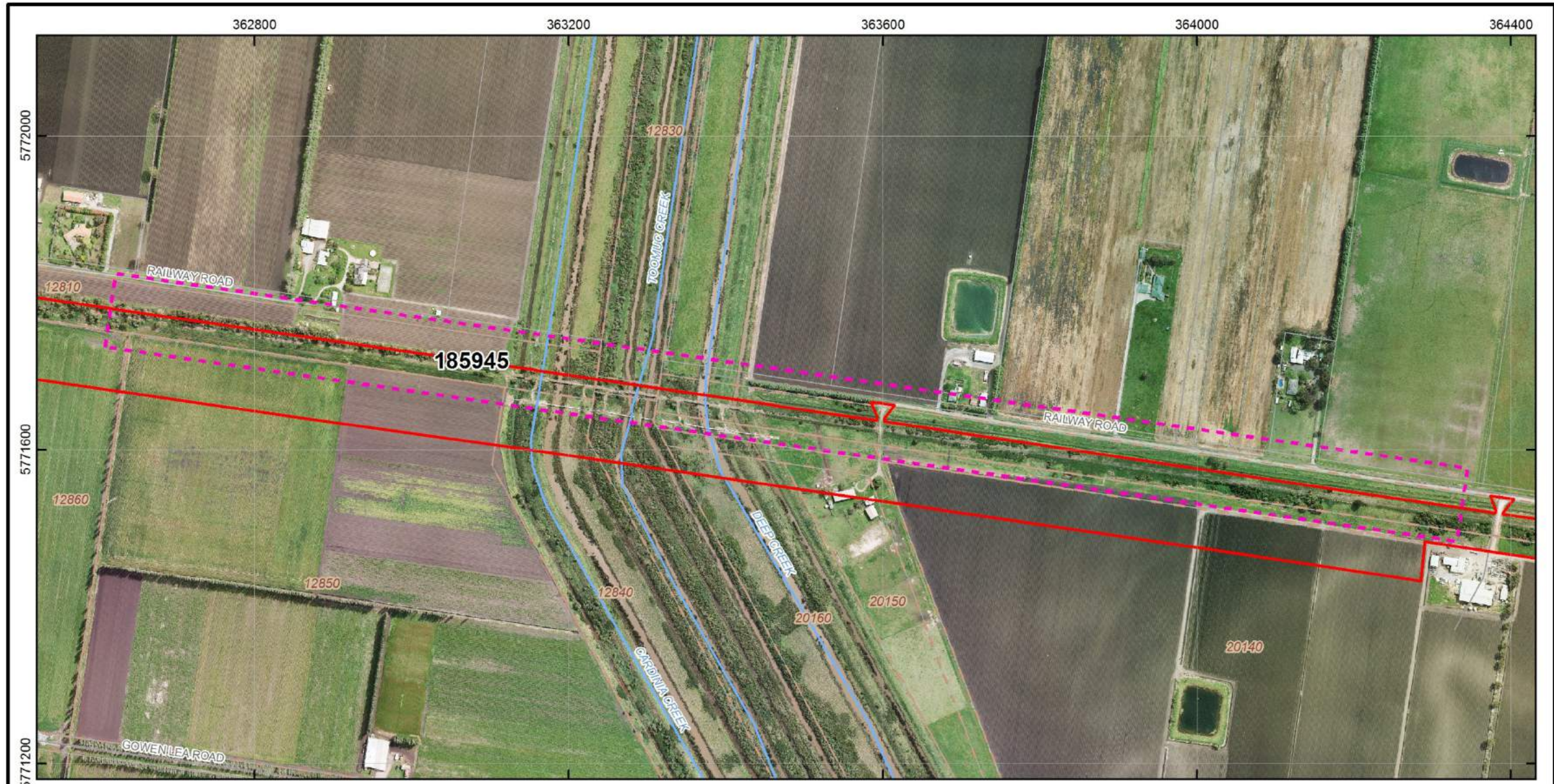


<p>Esso Pipeline Replacement Project - Historical Overview map of known historical heritage in the activity area Mornington Peninsula Shire / City of Casey / Cardinia Shire / Baw Baw Shire / Latrobe City / Wellington Shire</p>	<p>Legend</p> <ul style="list-style-type: none"> ▬ Activity area ▬ Historic heritage place Road Rail ▬ Named river Water area Built-up area 	<p>Project Code: LOLH</p> <p>GDA94 MGA Zone 55</p>	<p>Drawn by: Louisa Roy</p> <p>Date: 8 January 2014</p> <p style="text-align: center;">ANDREW LONG + ASSOCIATES</p>
<p>© 2014. While ALA has taken every care to ensure the accuracy and currency of this product, ALA makes no representations or warranties about its accuracy, completeness or suitability for any specific purpose. ALA cannot be held liable for any direct or indirect expenses, losses, damages and/or costs incurred as a result of the product being inaccurate, incomplete or unsuitable in any way or for any reason.</p>		<p>Data sources: VicMap topographic data: DSE, 2009, 2013; VHI, VHR, HO and Hermes Data: Heritage Victoria, 2014</p>	

Map 1: The study area



Ezzo Pipeline Replacement Project - Historical
Detail map of 185945
 Cardinia Shire

- Legend**
- Activity area
 - Hermes - unlisted
 - Property parcel
 - Property XIC code
 - Road
 - Named river
 - Water area
 - Rail
 - Built-up area

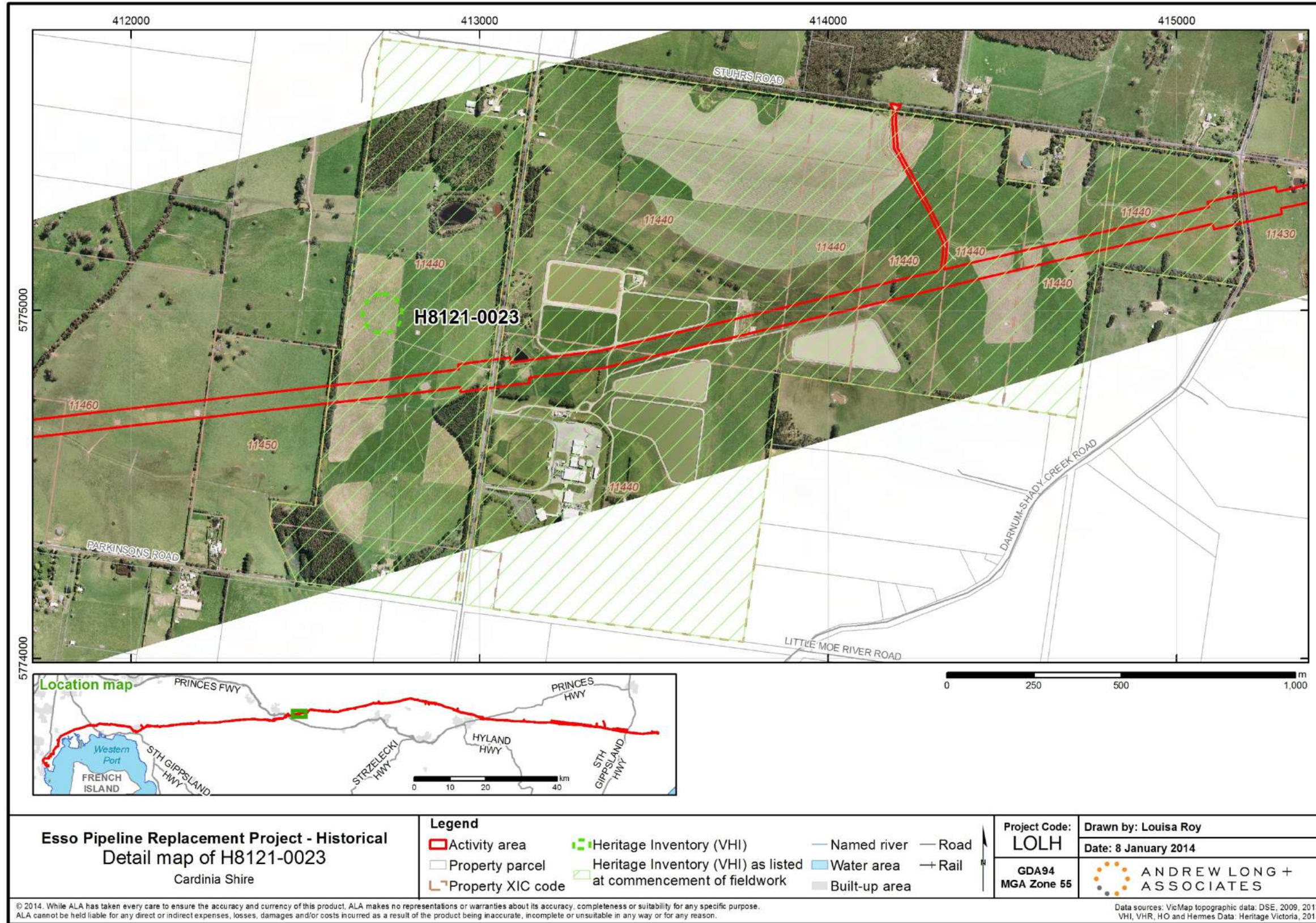
Project Code:
LOLH
 Drawn by: Louisa Roy
 Date: 8 January 2014

GDA94
 MGA Zone 55
ANDREW LONG + ASSOCIATES

© 2014. While ALA has taken every care to ensure the accuracy and currency of this product, ALA makes no representations or warranties about its accuracy, completeness or suitability for any specific purpose. ALA cannot be held liable for any direct or indirect expenses, losses, damages and/or costs incurred as a result of the product being inaccurate, incomplete or unsuitable in any way or for any reason.

Data sources: VicMap topographic data: DSE, 2009, 2013; VHI, VHR, HO and Hermes Data: Heritage Victoria, 2014

Map 2: Hermes Unlisted 185945



**Esso Pipeline Replacement Project - Historical
Detail map of H8121-0023**
Cardinia Shire

- Legend**
- Activity area
 - Property parcel
 - Property XIC code
 - Heritage Inventory (VHI)
 - Heritage Inventory (VHI) as listed at commencement of fieldwork
 - Named river
 - Water area
 - Built-up area
 - Road
 - Rail

Project Code: LOLH	Drawn by: Louisa Roy
GDA94 MGA Zone 55	Date: 8 January 2014
ANDREW LONG + ASSOCIATES	

© 2014. While ALA has taken every care to ensure the accuracy and currency of this product, ALA makes no representations or warranties about its accuracy, completeness or suitability for any specific purpose. ALA cannot be held liable for any direct or indirect expenses, losses, damages and/or costs incurred as a result of the product being inaccurate, incomplete or unsuitable in any way or for any reason.

Data sources: VicMap topographic data: DSE, 2009, 2013; VHI, VHR, HO and Hemes Data: Heritage Victoria, 2014

Map 3: H8121-0023