

**Esso Pipeline Replacement Project - Historical  
Detail map of HO78**  
Cardinia Shire

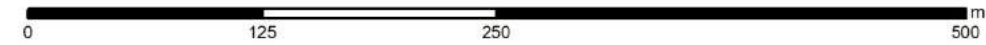
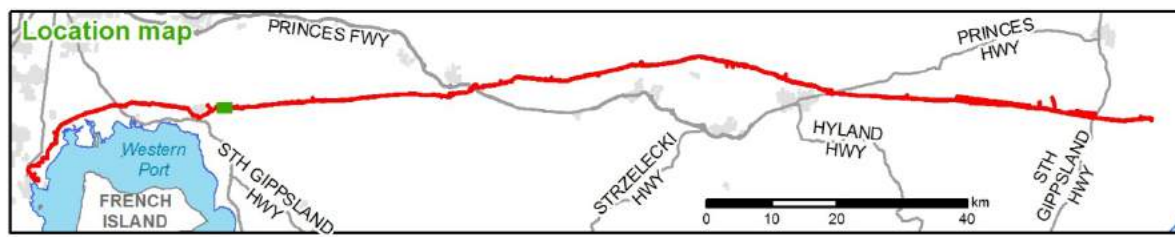
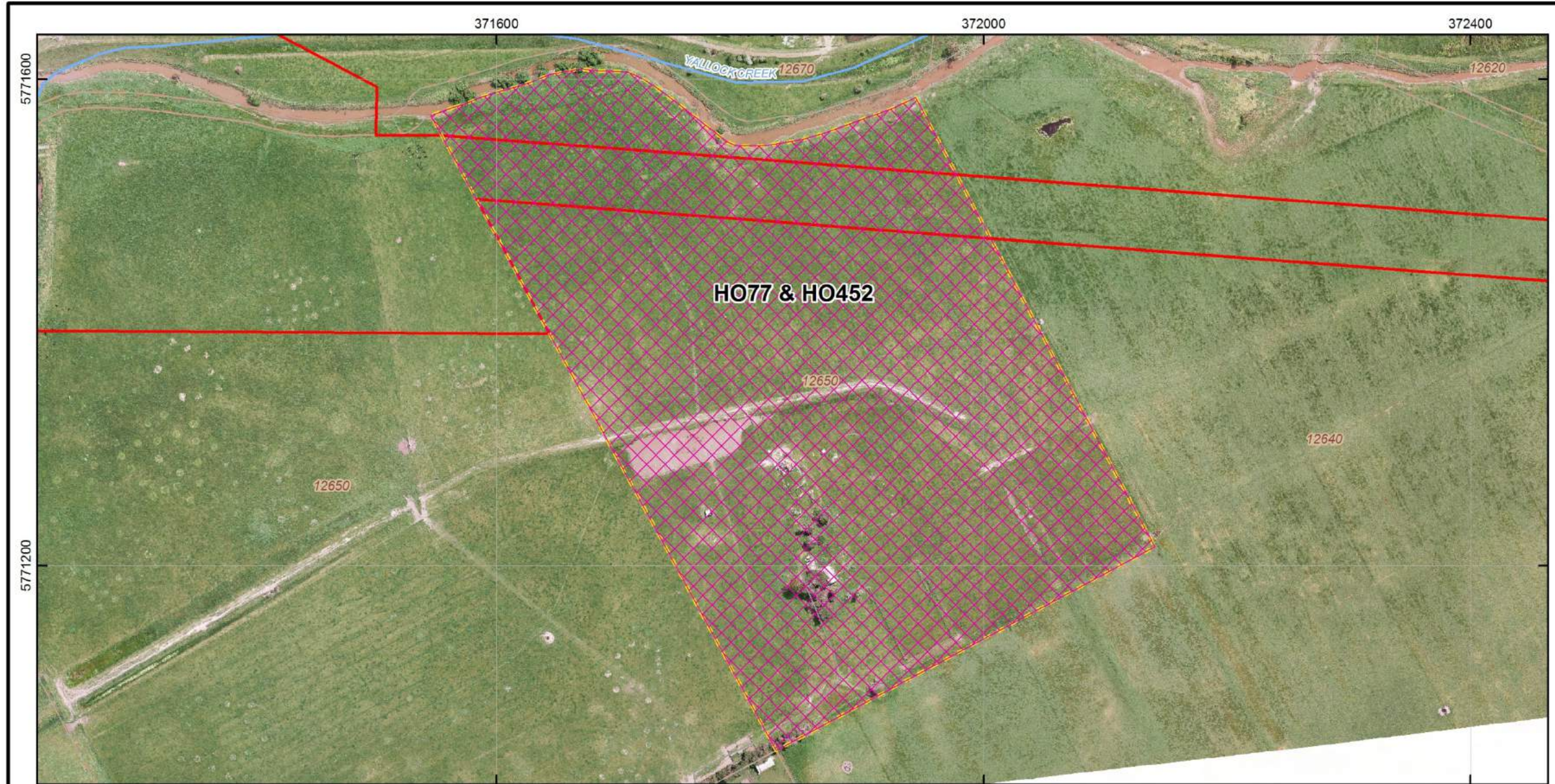
- Legend**
- Activity area
  - Heritage overlay
  - Property parcel
  - Property XIC code
  - Road
  - Rail
  - Named river
  - Water area
  - Built-up area

Project Code: <b>LOLH</b>	Drawn by: Louisa Roy
GDA94 MGA Zone 55	Date: 8 January 2014
<b>ANDREW LONG + ASSOCIATES</b>	

© 2014. While ALA has taken every care to ensure the accuracy and currency of this product, ALA makes no representations or warranties about its accuracy, completeness or suitability for any specific purpose. ALA cannot be held liable for any direct or indirect expenses, losses, damages and/or costs incurred as a result of the product being inaccurate, incomplete or unsuitable in any way or for any reason.

Data sources: VicMap topographic data: DSE, 2009, 2013; VHI, VHR, HO and Hermes Data: Heritage Victoria, 2014

**Map 4: HO78**



**Esso Pipeline Replacement Project - Historical**  
**Detail map of HO77 and HO452**  
 Cardinia Shire

**Legend**

- Activity area
- Heritage register (VHR)
- Heritage overlay
- Property parcel
- Property XIC code
- Road
- Named river
- Water area
- Rail
- Built-up area

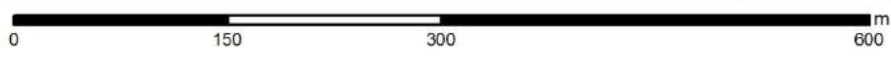
Project Code:  
**LOLH**  
 Drawn by: Louisa Roy  
 Date: 8 January 2014

GDA94  
 MGA Zone 55  
**ANDREW LONG + ASSOCIATES**

© 2014. While ALA has taken every care to ensure the accuracy and currency of this product, ALA makes no representations or warranties about its accuracy, completeness or suitability for any specific purpose. ALA cannot be held liable for any direct or indirect expenses, losses, damages and/or costs incurred as a result of the product being inaccurate, incomplete or unsuitable in any way or for any reason.

Data sources: VicMap topographic data: DSE, 2009, 2013; VHI, VHR, HO and Hermes Data: Heritage Victoria, 2014

**Map 5: HO77 & HO452**



**Esso Pipeline Replacement Project - Historical**  
**Detail map of H021 and 3958**  
 City of Casey

Legend			
Activity area	Property parcel	Named river	Built-up area
Heritage overlay	Property XIC code	Water area	
Hermes - unlisted	Road	Rail	

Project Code: <b>LOLH</b>	Drawn by: Louisa Roy
GDA94 MGA Zone 55	Date: 8 January 2014
<b>ANDREW LONG + ASSOCIATES</b>	

© 2014. While ALA has taken every care to ensure the accuracy and currency of this product, ALA makes no representations or warranties about its accuracy, completeness or suitability for any specific purpose. ALA cannot be held liable for any direct or indirect expenses, losses, damages and/or costs incurred as a result of the product being inaccurate, incomplete or unsuitable in any way or for any reason.

Data sources: VicMap topographic data: DSE, 2009, 2013; VHI, VHR, HO and Hermes Data: Heritage Victoria, 2014

Map 6: H021 & Hermes Unlisted 3958