



## FIGURE 18

# RESIDENTIAL VIEWPOINTS AND EFFECTS OF SURROUNDING VEGETATION – BROADER SETTING

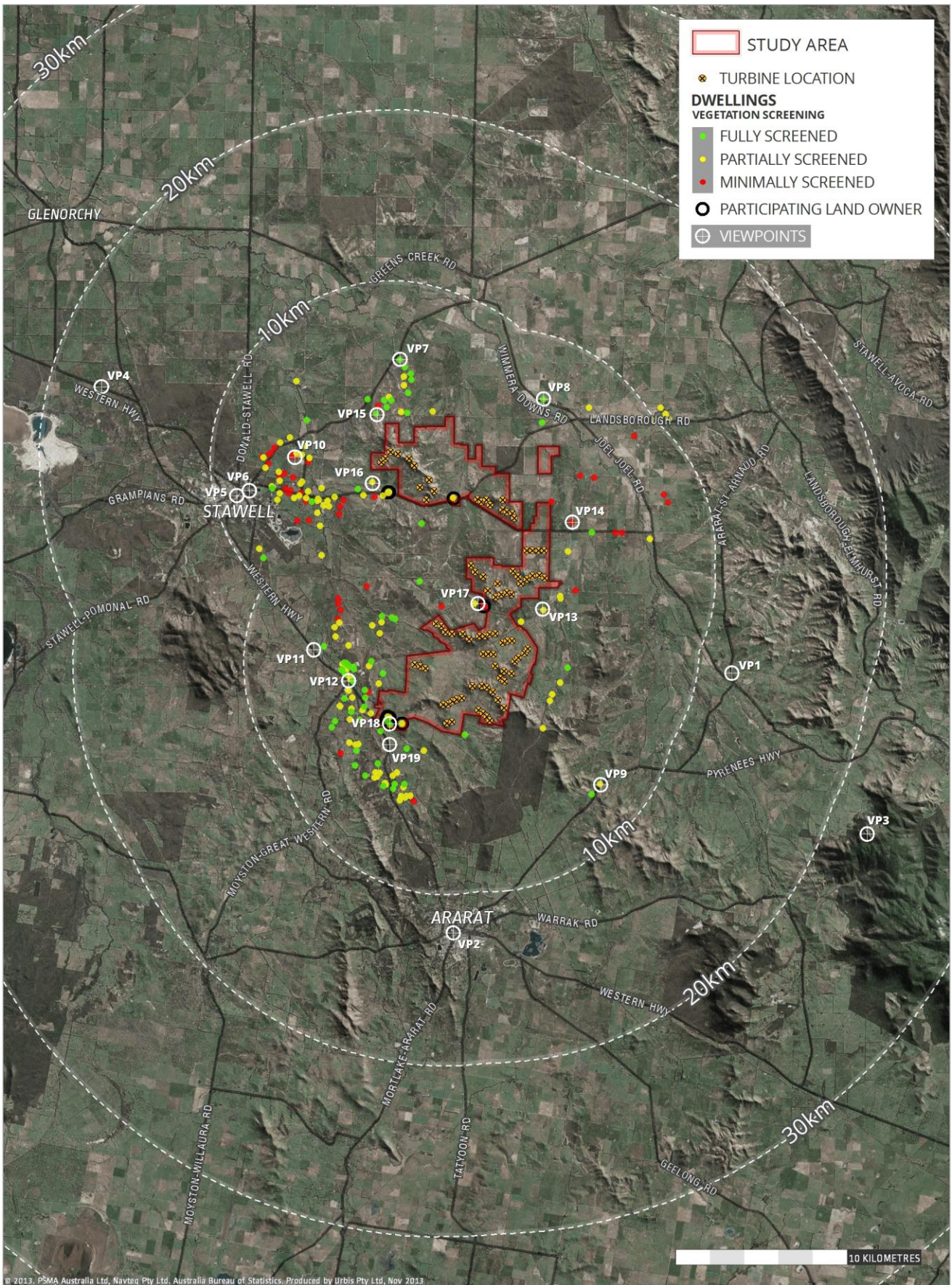


FIGURE 20 – RESIDENTIAL VIEWPOINTS AND EFFECTS OF SURROUNDING VEGETATION – BROADER SETTING



FIGURE 19

ACCESS LOCATIONS



Table 3-1: Access Locations

Wind Farm Area	Number of Turbines	Access Location(s)	Comment
A	11	Joel South Road, approximately 800m from the intersection with Landsborough Road	
B	0	Thomas Road / Joel South Road <b>Please note no access location shown on plan</b>	Location of the substation
C	17	Gibson Road, approximately 950m from Joel South Road (3 turbines) Gibson Road, approximately 1860m from Joel South Road (14 turbines -shared) Bulgana Road, approximately 800m from Great Western Bulgana Road	
D	9	Salt Creek Road, 2.2km SW of Bulgana Road	Quarry access located on Sandy Creek Road
E	6	Great Western Bulgana Road 2.2km NE of intersection with Sandy Creek Road  Intersection of Allandale Road/Tuckers Hill Road	
F	24	Allanvale Road 3.2km NE of Western Highway	Access via Tuckers Hill Quarry Allanvale Road includes a narrow one way bridge located 400m NE of Western Highway

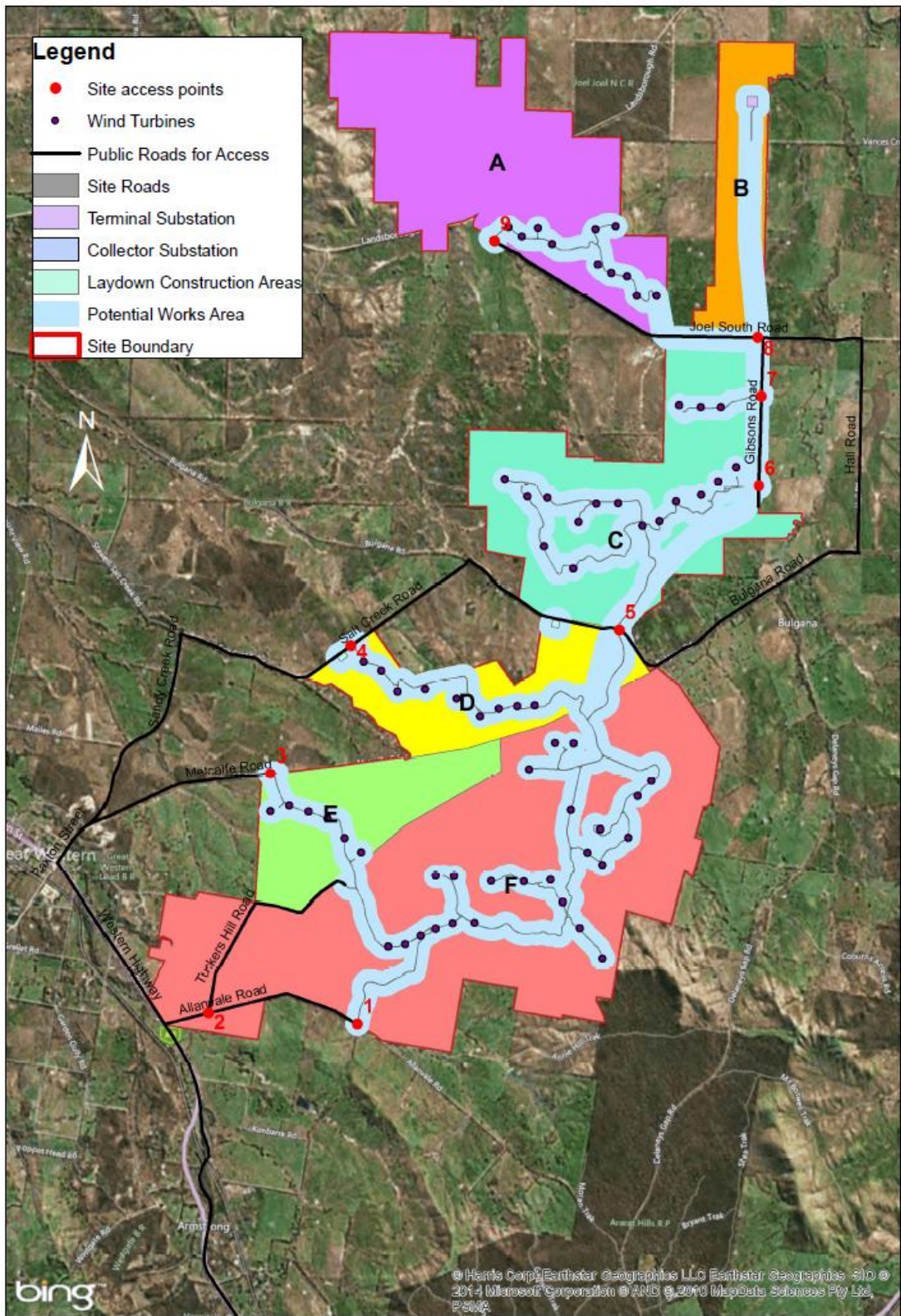


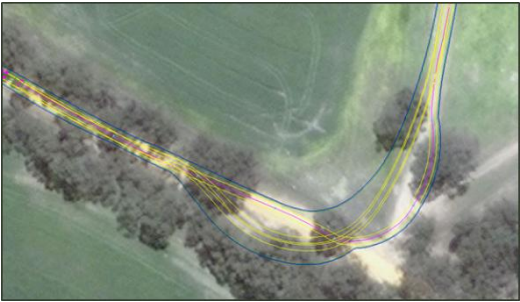

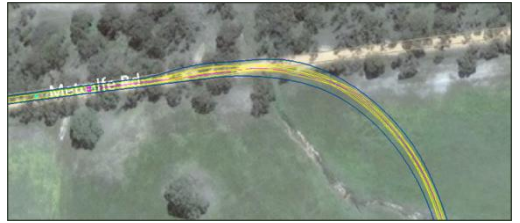

Figure 3-1: Reference areas within the wind farm area







FIGURE 20

SWEPT PATH ASSESSMENT

**Table 5-7: OSOM Swept Path Assessment at Access Locations**

Access	Access Location	Observations	Swept Path
1	Allanvale Road 3.2km NE of Western Highway. Provides access into land parcel F	<ul style="list-style-type: none"> <li>• Vegetation removal required;</li> <li>• Intersection widening required;</li> <li>• Minor encroachment onto private land to north of Allanvale Rd.</li> </ul>	
2	Intersection of Allanvale Road/Tuckers Hill Road Provides access into land parcel E and F	<ul style="list-style-type: none"> <li>• Possible encroachment onto private land to south of Allanvale Rd;</li> <li>• Intersection widening including removal or street furniture and fencing;</li> <li>• Removal of three mature trees required, possible removal of other vegetation required.</li> </ul>	
3	Metcalf Road 2.2km NE of intersection with Sandy Creek Road Provides access into land parcel E	<ul style="list-style-type: none"> <li>• May require vegetation removal.</li> </ul>	
4	Salt Creek Road, 2.2km SW of Bulgana Road Provides access into land parcel D	<ul style="list-style-type: none"> <li>• Vegetation removal required;</li> <li>• May encroach on private land to west of Salt Creek Rd;</li> <li>• May require removal of private fencing.</li> </ul>	



Access	Access Location	Observations	Swept Path
5	<p>Bulgana Road 800m NW of Great Western Bulgana Road. Provides access to land parcel C and D.</p>	<ul style="list-style-type: none"> <li>Some vegetation and fencing removal required to access both land parcels C and D.</li> </ul>	
6	<p>Gibson Road 1860m south of Joel South Road</p>	<ul style="list-style-type: none"> <li>Gibson Road will require widening at the point of access.</li> </ul>	
7	<p>Gibson Road 950m south of Joel South Road</p>	<ul style="list-style-type: none"> <li>Gibson Road will require widening at the point of access.</li> </ul>	
8	<p>Intersection of Joel South Road/Thomas Road</p>	<ul style="list-style-type: none"> <li>Vegetation removal</li> <li>Intersection widening including cut (south and west)</li> <li>Possible encroachment onto private land to west including fence removal.</li> </ul>	




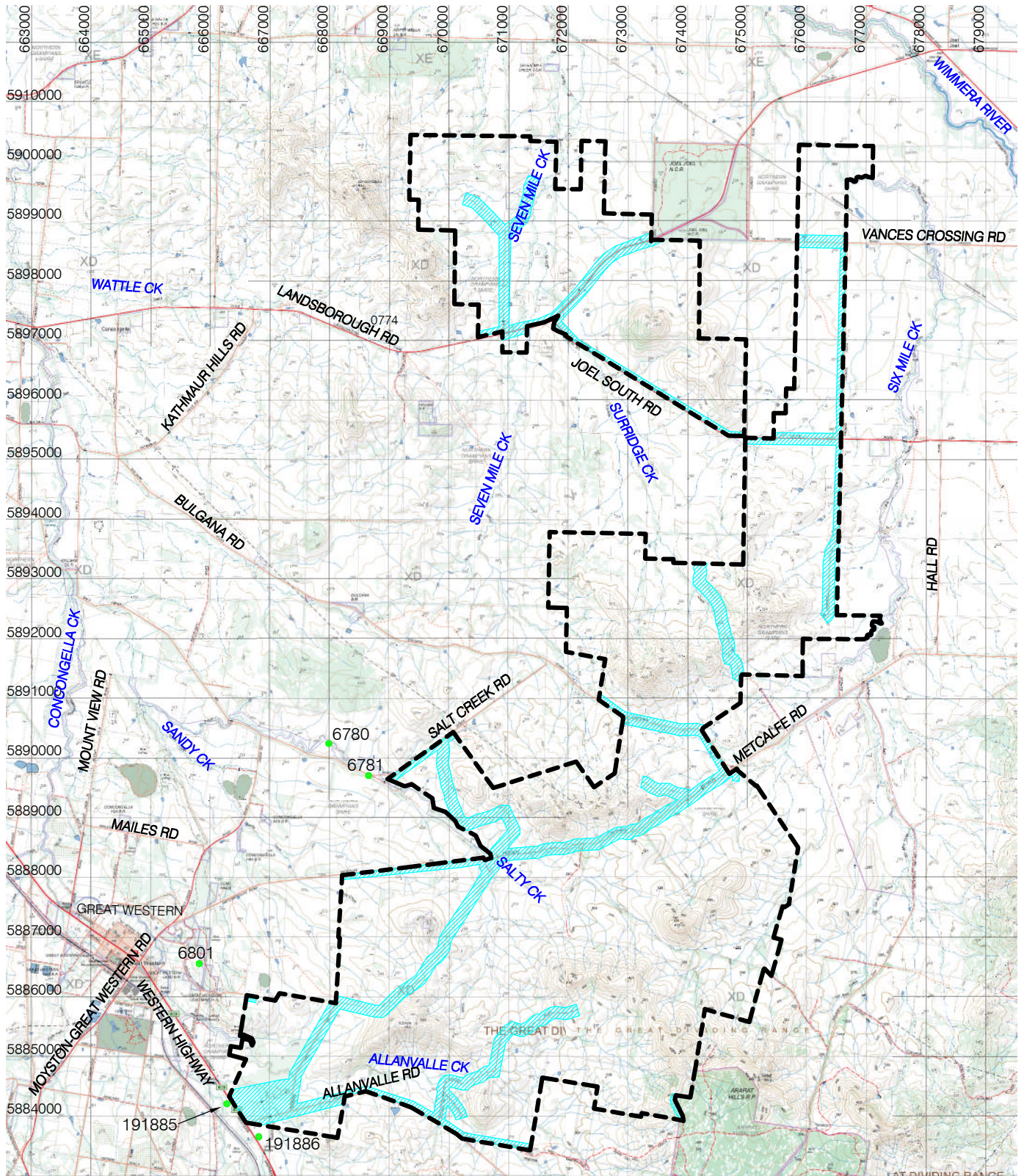
Access	Access Location	Observations	Swept Path
9	Joel South Road 800m SE of Landsborough Road	<ul style="list-style-type: none"><li>• Vegetation removal</li><li>• Surridge Creek crossing.</li></ul>	 An aerial photograph showing a curved path through a wooded area. A yellow line follows the path, and a blue line indicates the swept area. The path curves from the top left towards the bottom right. The surrounding area is a mix of green trees and brownish ground, possibly a cleared area or a creek bed.



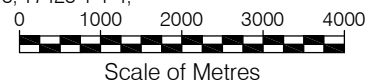
FIGURE 21

PREDICTED AREAS OF HISTORIC CULTURAL  
HERITAGE SENSITIVITY








Topographic map used for Location Plan: 1:30,000 Number T7423-1-1-1, T7423-1-1-2, T7423-1-1-3, T7423-1-1-4, T7423-1-2-1, T7423-1-2-1, T7423-1-2-4, T7423-1-4-1



Legend:

-  Activity Area Boundary  
7,524 hectares (approx)
-  Areas of Historic Cultural Heritage Sensitivity
-  Hermes ID Number



Map 4 Predicted Areas of Historic Cultural Heritage Sensitivity

