

Figure 2: Referral area

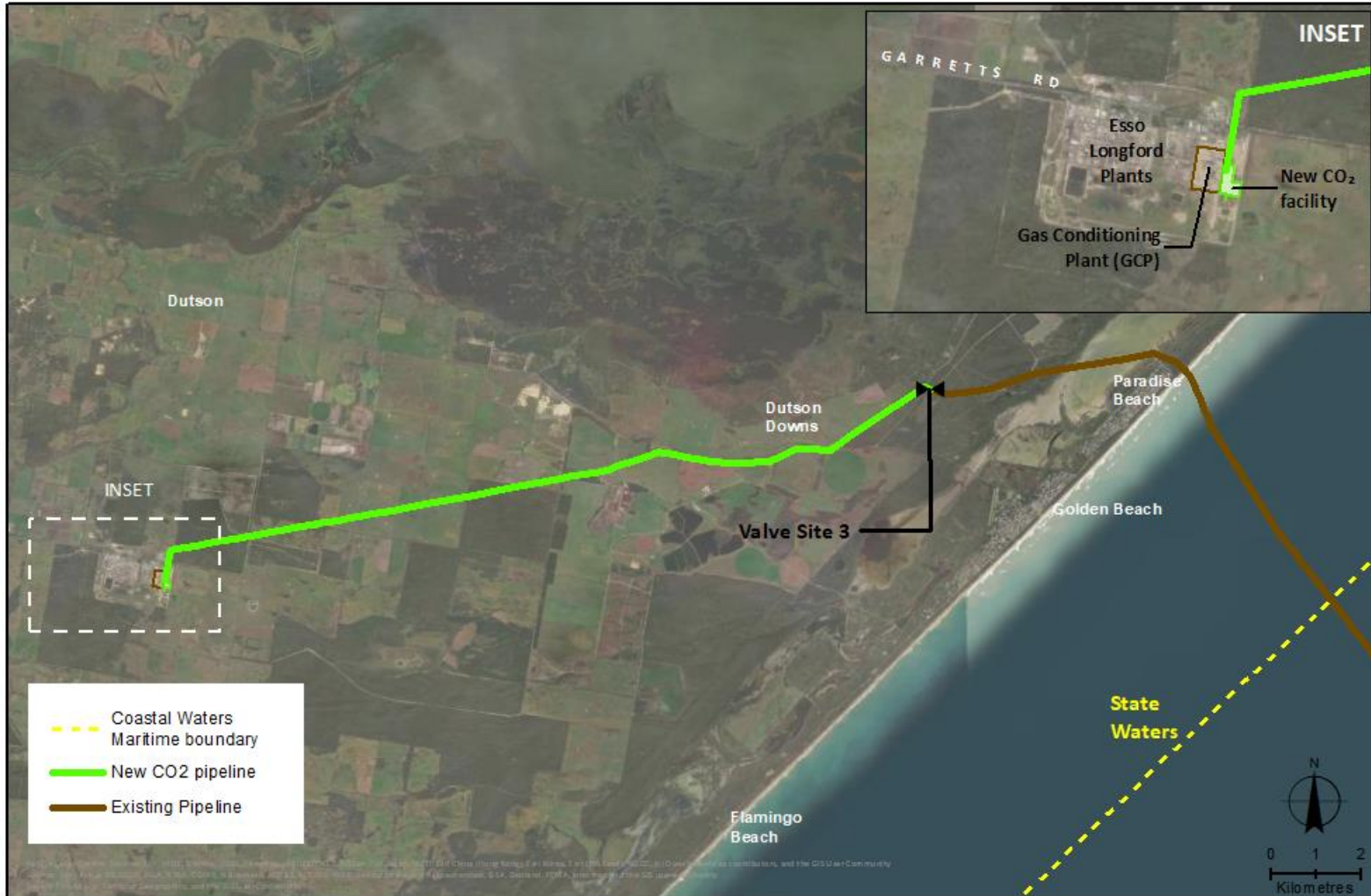


Figure 3: Proposed location of new CO₂ facilities within the larger existing Longford plant site



Figure 4: Approximate set up of new CO₂ compression and dehydration facilities

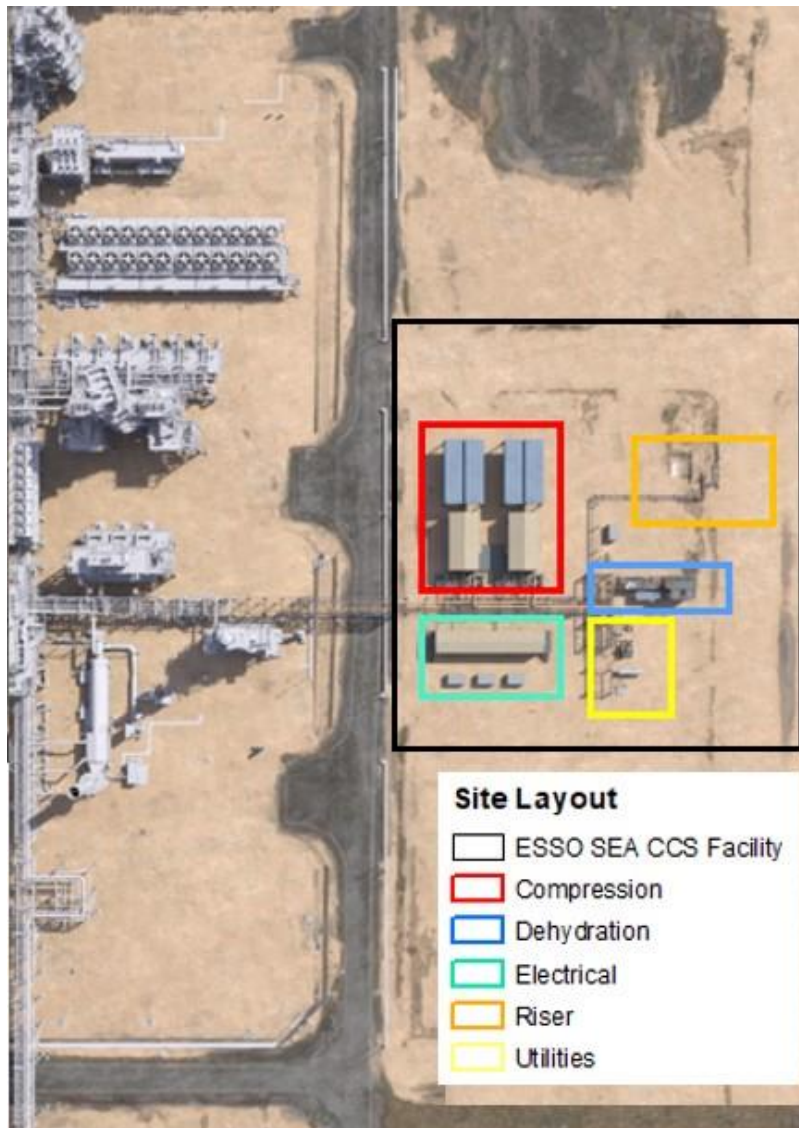


Figure 5: Location of new CO₂ onshore pipeline



Figure 6: Typical construction Right of Way layout

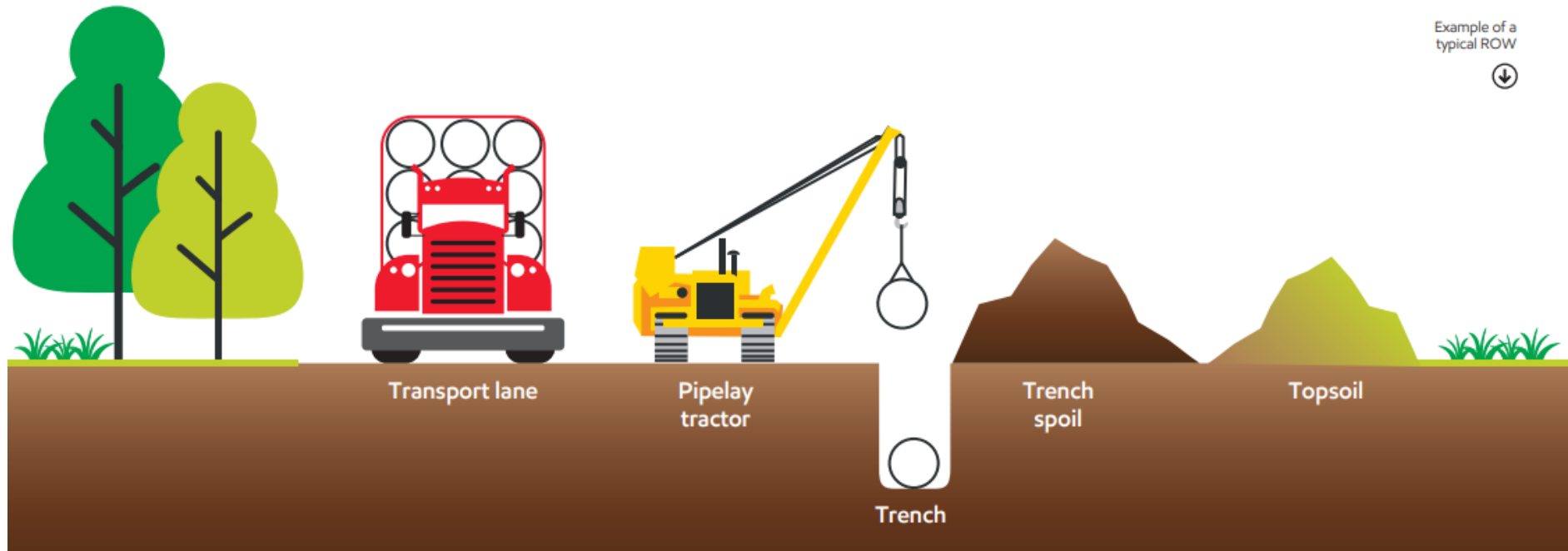


Figure 7: Typical trenchless construction profile

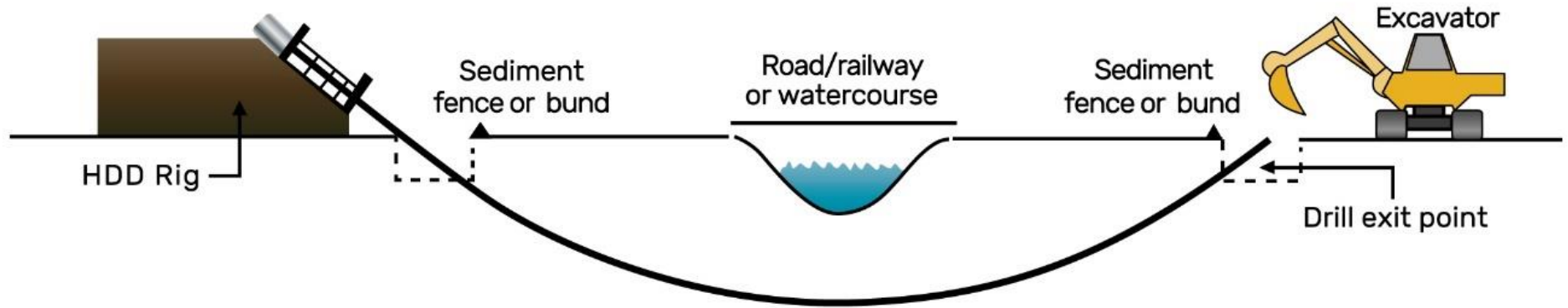


Figure 8: Map of alternative onshore pipeline route



Figure 9: Soil classifications across the Project

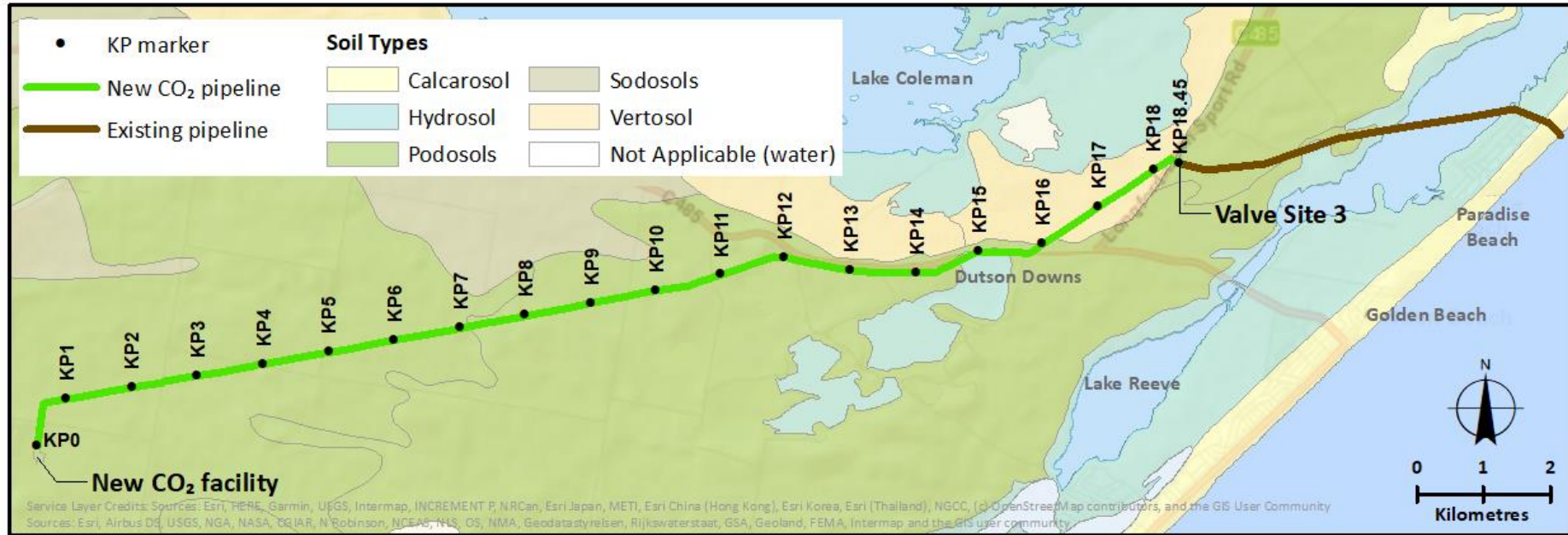


Figure 10: Acid sulfate soils across the Project

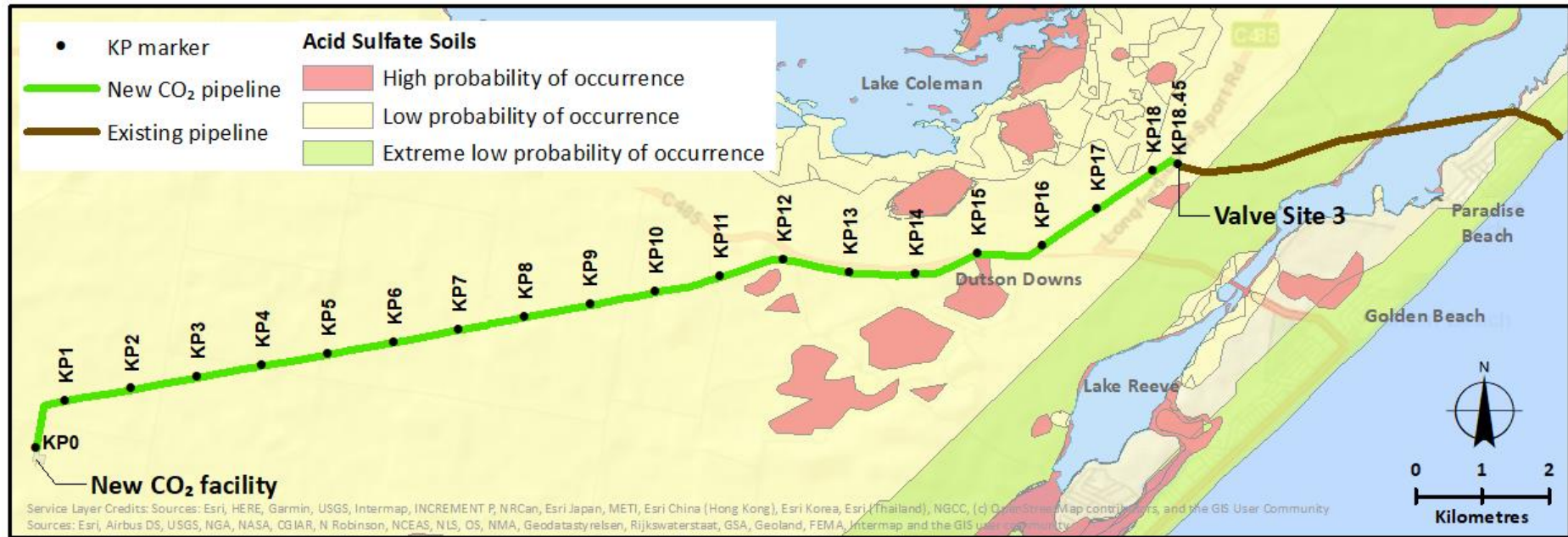


Figure 11: Water features across the Project

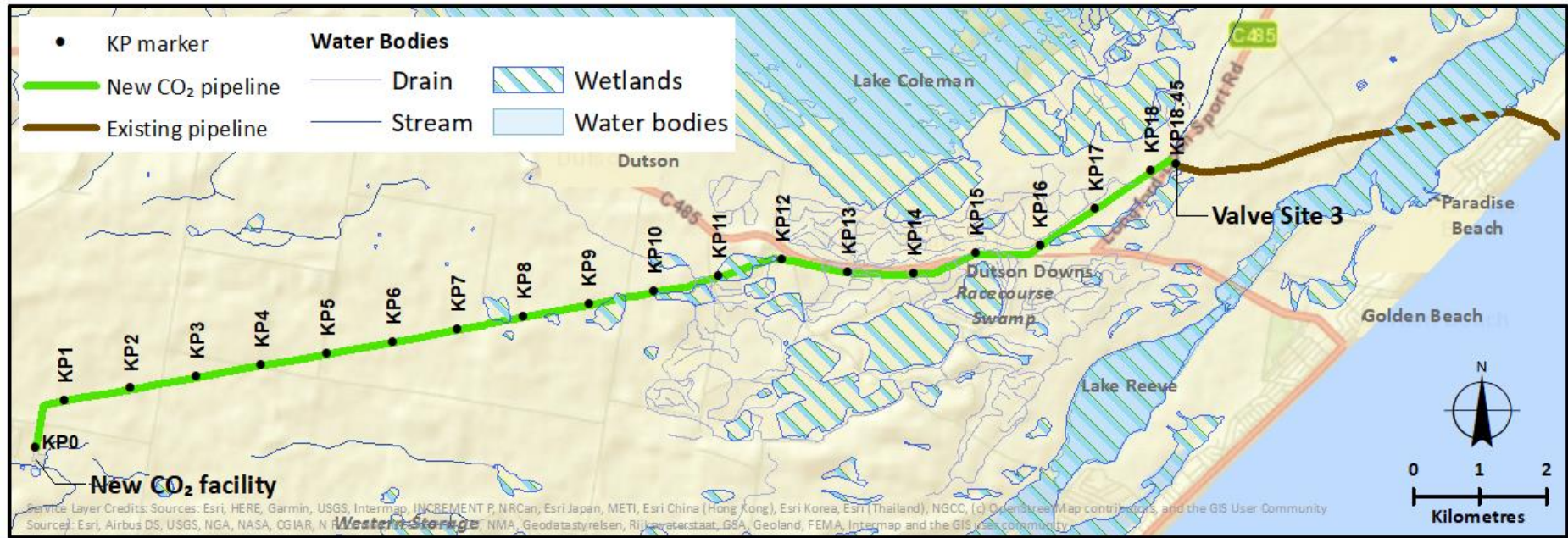
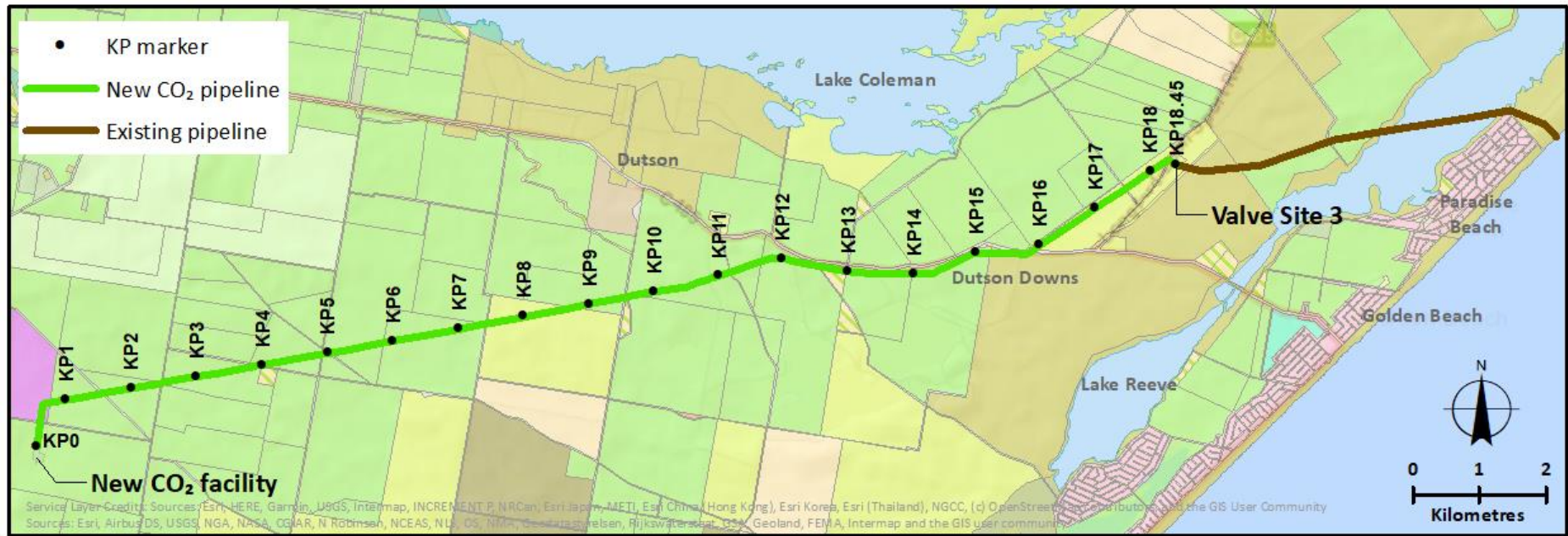


Figure 12: Land use across the Project*

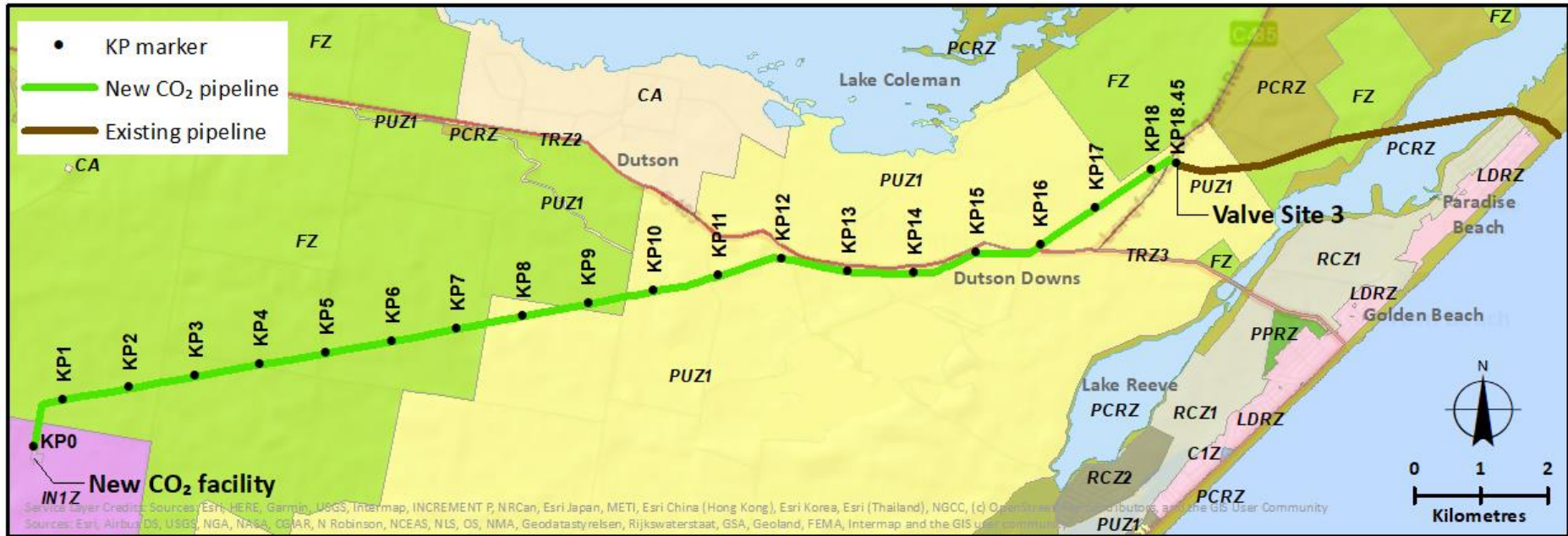


Land Use (2017)



* Note: Government land use dataset indicates the new CO₂ facility is located on 'grazing modified pastures' as the larger parcel of land is predominantly agricultural, however the Esso Longford Plants are zoned Industrial 1 (see Figure 12) and are used for gas treatment, storage and transmission.

Figure 13: Planning zones across the Project



Planning Scheme Zones




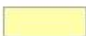

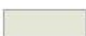
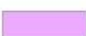
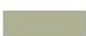



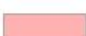
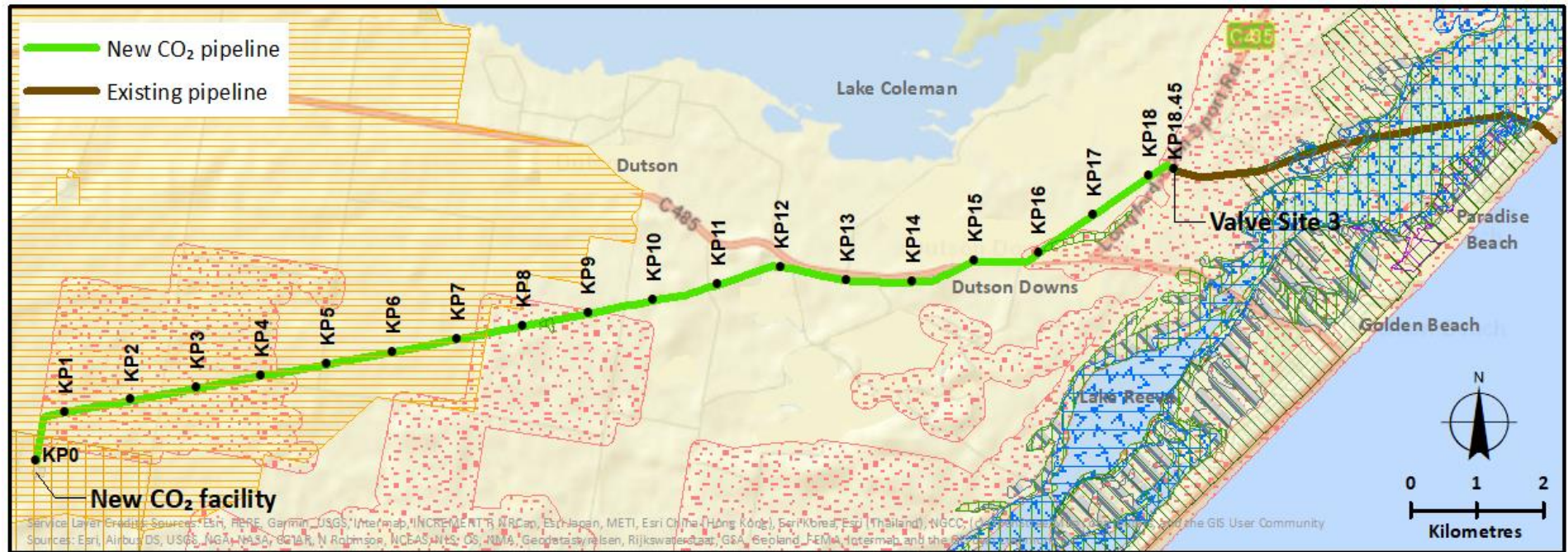




- | | |
|---|--|
|  C1Z - Commercial 1 zone |  PPRZ - Public Park and Recreation zone |
|  CA - Commonwealth Land not controlled by Planning Scheme |  PUZ1 - Public Use zone - Service and Utility |
|  FZ - Farming zone |  RCZ1 - Rural Conservation zone - Schedule 1 |
|  IN1Z - Industrial zone |  RCZ2 - Rural Conservation zone - Schedule 2 |
|  LDRZ - Low Density Residential zone |  TRZ2 - Transport zone 2 - Principal Road Network |
|  PCRZ - Public Conservation and Resource zone |  TRZ3 - Transport zone 3 - Significant Municipal Road |

Figure 14: Planning overlays across the Project



Planning Scheme Overlays

- | | |
|--|---|
|  BMO - Bushfire Management Overlay |  ESO2 - Environmental Significance Overlay - Schedule 2 |
|  DDO1 - Design and Development Overlay - Schedule 1 |  FO - Floodway Overlay |
|  DDO6 - Design and Development Overlay - Schedule 6 |  LSIO - Land Subject to Inundation Overlay |
|  ESO1 - Environmental Significance Overlay - Schedule 1 |  RO - Restructure Overlay |

