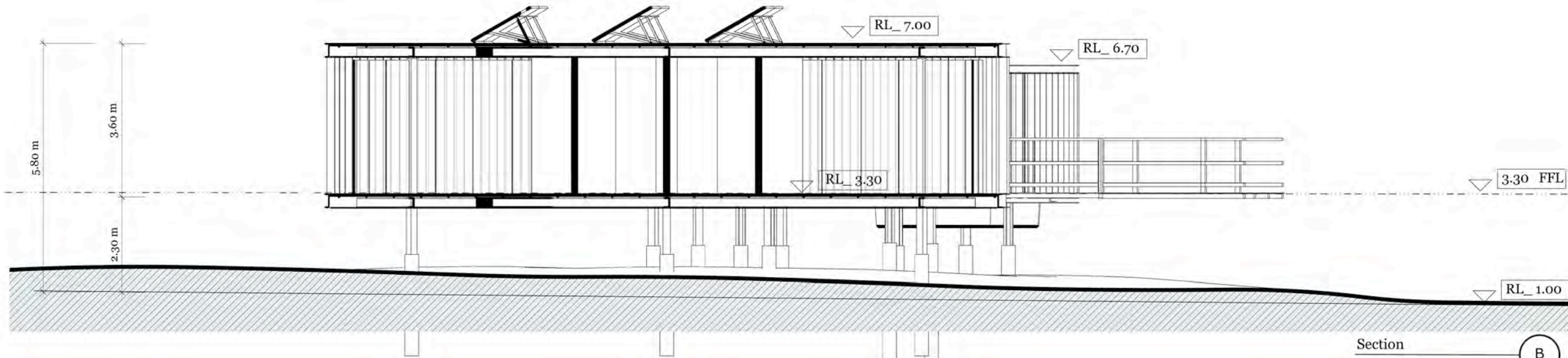


Section A
1:50 @A1 size



Section B
1:50 @A1 size

PROJECT
NUNDUK Spa Retreat

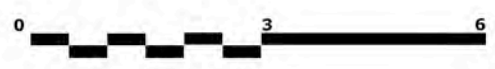
DESCRIPTION
SECTIONS VILLA _TYPE C

DRAWN BY
BP

ISSUE: planning
28.08.2018

REVISIONS
12.12.2017
11.02.2018
20.02.2018

16.08.2018
20.08.2018
28.08.2018





PERFORMANCE GLASS
RECYCLED WOOD
METAL

PROJECT
NUNDUK Spa Retreat

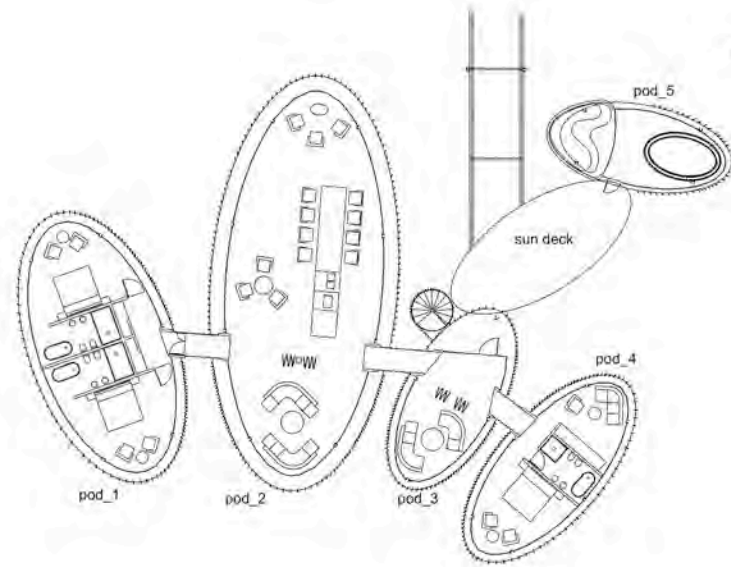
DESCRIPTION
VILLA_DETAIL/FINISHES

DRAWN BY
BP

ISSUE: planning
28.08.2018

REVISIONS
20.02.2018

06.03.2018
16.08.2018
20.08.2018



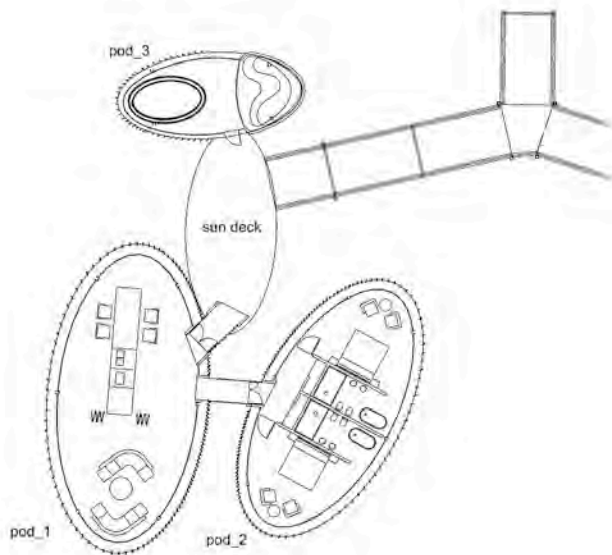
VILLA TYPE_A

Area Schedule

Pod_1	90.00 m2
Pod_2	170.00 m2
Pod_3	45.00 m2
Pod_4	55.00 m2
Pod_5	35.00 m2
Sun deck	40.00 m2
Upper deck	45.00 m2
TOTAL	480.00 m2

Number of Villas Type A 5

TOTAL 2400.00 m2



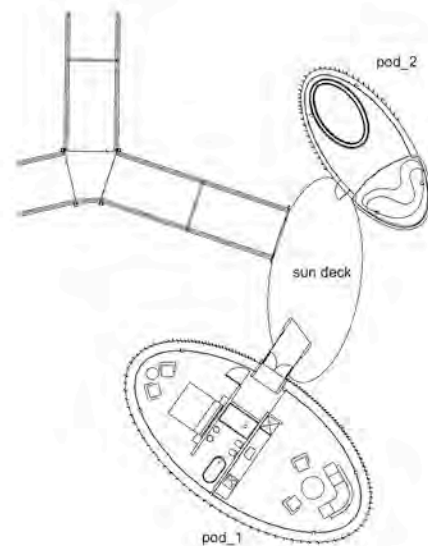
VILLA TYPE_B

Area Schedule

Pod_1	115.00 m2
Pod_2	90.00 m2
Pod_3	35.00 m2
Sun deck	40.00 m2
TOTAL	280.00m2

Number of Villas Type B 10

TOTAL 2800.00 m2



VILLA TYPE_C

Area Schedule

Pod_1	90.00 m2
Pod_2	35.00 m2
Sun deck	40.00 m2
TOTAL	165.00m2

Number of Villas Type B 10

TOTAL 1650.00 m2

Total Area 6850.00 m2

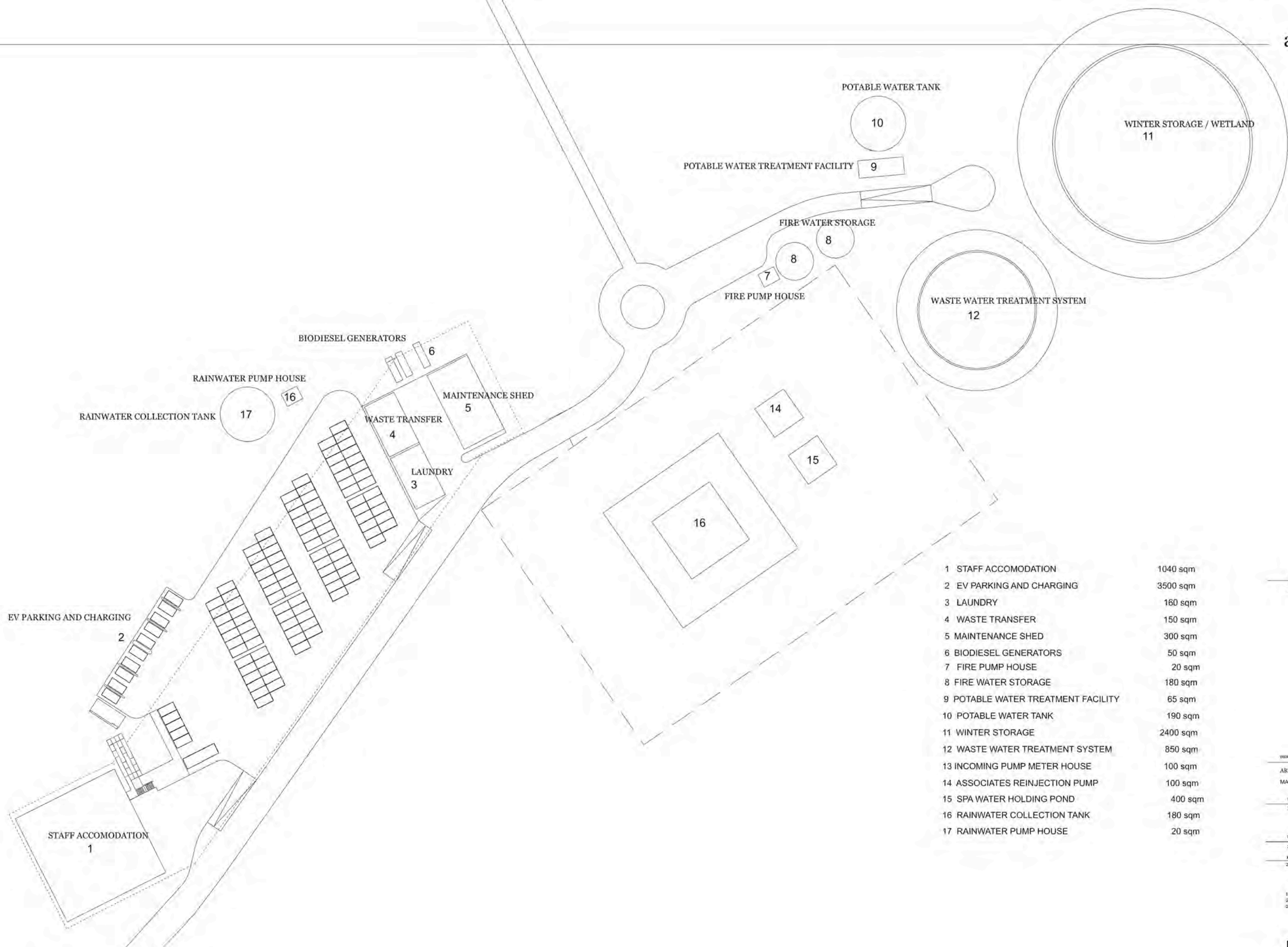
PROJECT
NUNDUK Spa Retreat

DESCRIPTION
VILLA Area Schedule

DRAWN BY
BP

ISSUE / planning
28.08.2018
REVISIONS
20.02.2018

16.08.2018
20.08.2018



1	STAFF ACCOMODATION	1040 sqm
2	EV PARKING AND CHARGING	3500 sqm
3	LAUNDRY	160 sqm
4	WASTE TRANSFER	150 sqm
5	MAINTENANCE SHED	300 sqm
6	BIODIESEL GENERATORS	50 sqm
7	FIRE PUMP HOUSE	20 sqm
8	FIRE WATER STORAGE	180 sqm
9	POTABLE WATER TREATMENT FACILITY	65 sqm
10	POTABLE WATER TANK	190 sqm
11	WINTER STORAGE	2400 sqm
12	WASTE WATER TREATMENT SYSTEM	850 sqm
13	INCOMING PUMP METER HOUSE	100 sqm
14	ASSOCIATES REINJECTION PUMP	100 sqm
15	SPA WATER HOLDING POND	400 sqm
16	RAINWATER COLLECTION TANK	180 sqm
17	RAINWATER PUMP HOUSE	20 sqm

PROJECT
NUNDUK Spa Retreat

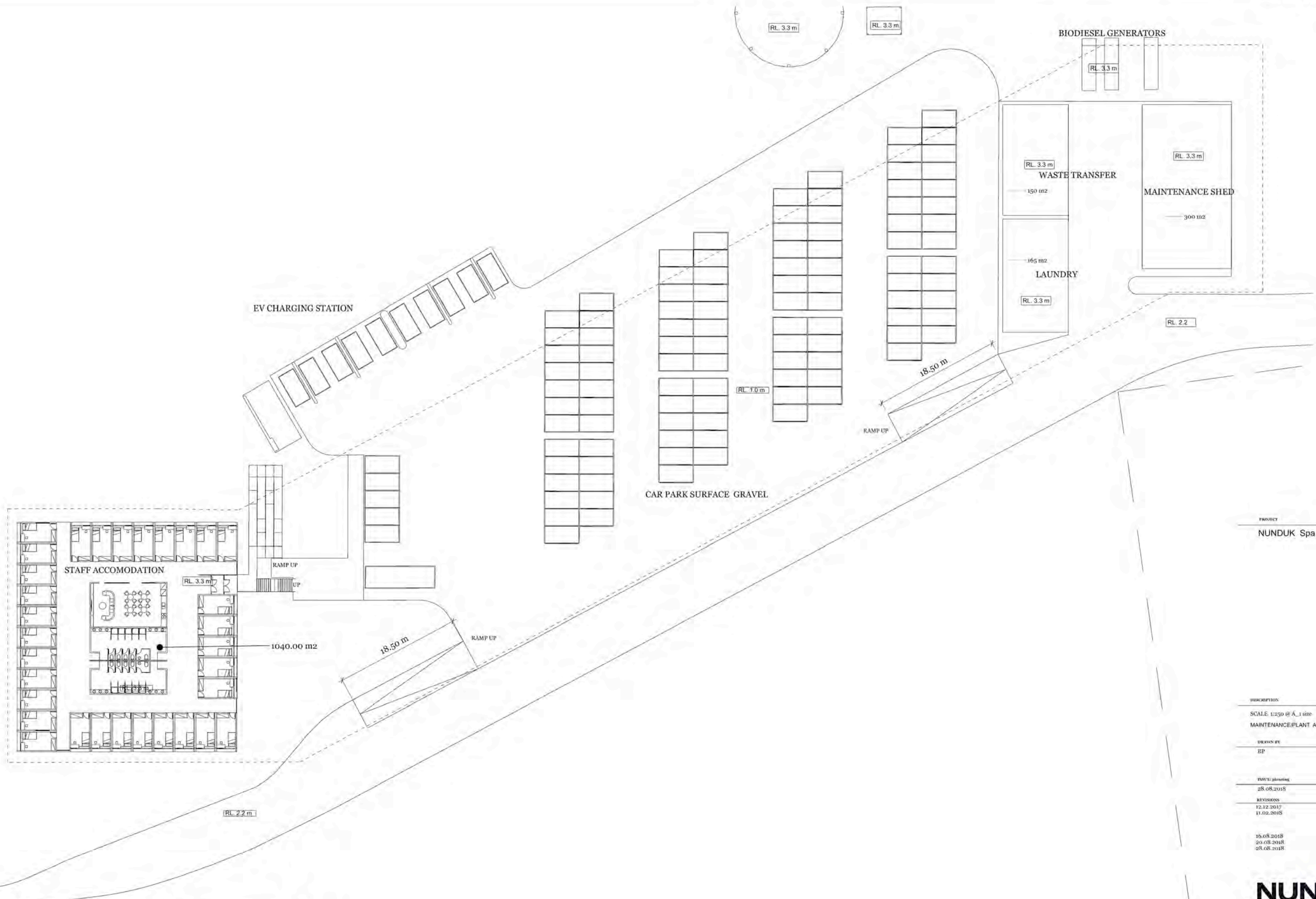
DESCRIPTION
AREA SCHEDULE 1:500 @ A_1 size
MAINTENANCE/PLANT AREA

DRAWN BY
BP

ISSUE planning
28.08.2018
REVISIONS
20.02.2017

16.08.2018
20.08.2018
25.08.2018





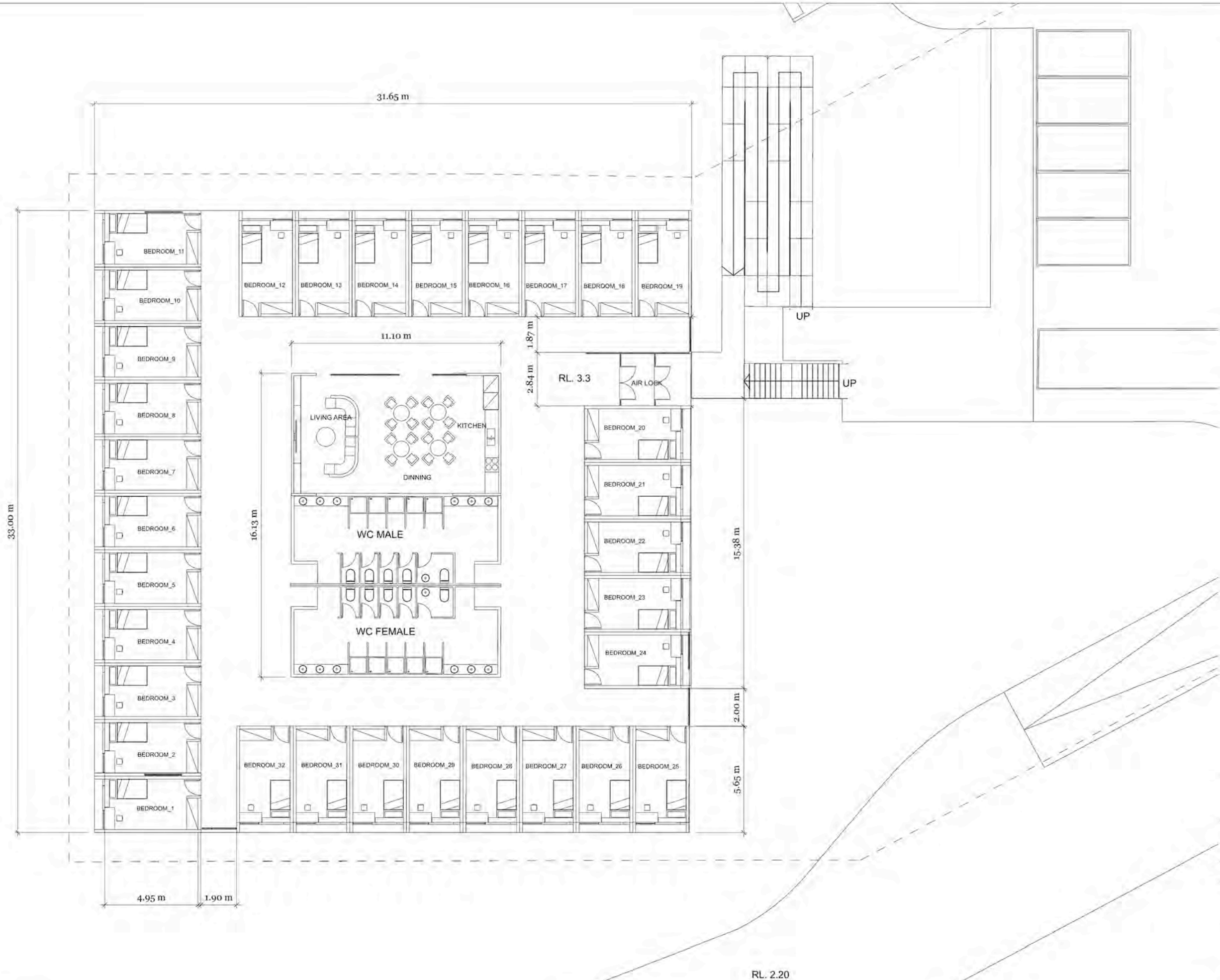
PROJECT
NUNDUK Spa Retreat

DESCRIPTION
SCALE 1:250 @ A1 size
MAINTENANCE/PLANT AREA

DRAWN BY
BP

ISSUE planning
28.08.2018
REVISIONS
12.12.2017
11.02.2018

16.08.2018
20.08.2018
25.08.2018

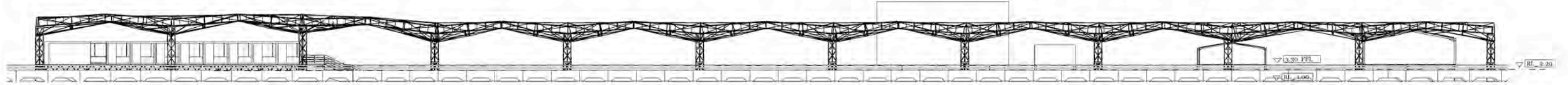


PROJECT
 NUNDUK Spa Retreat

DESCRIPTION	DATE
STAFF ACCOMODATION SCALE 1:100 @ A1:500 FLOOR LAYOUT	
DRAWN BY	BP
ISSUE planning	28.08.2018
REVISIONS	12.12.2017 11.02.2018
	10.08.2018 20.08.2018 05.08.2018

NUNDUK
a.45

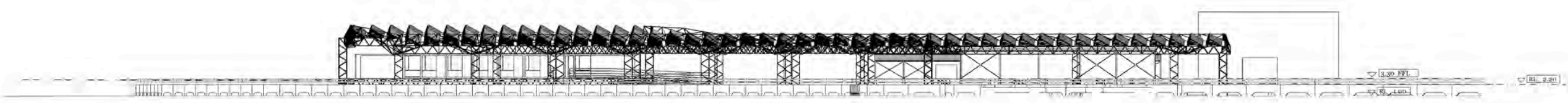




Elevation South



PROJECT
NUNDUK Spa Retreat



Elevation East



DESCRIPTION

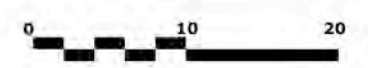
SITE ELEVATIONS 1:250 @ A1 size
INFRASTRUCTURE @ SERVICES

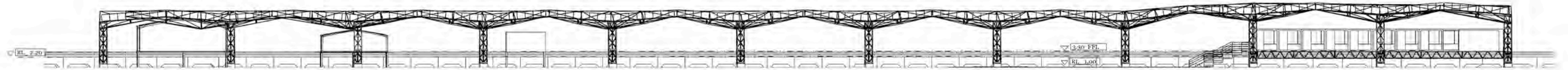
DRAWN BY
BP

ISSUE: planning
28.08.2018

REVISIONS

12.12.2017
11.02.2018
20.02.2018
16.08.2018
20.08.2018
05.08.2018





Elevation North



PROJECT
NUNDUK Spa Retreat



Elevation West

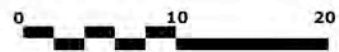


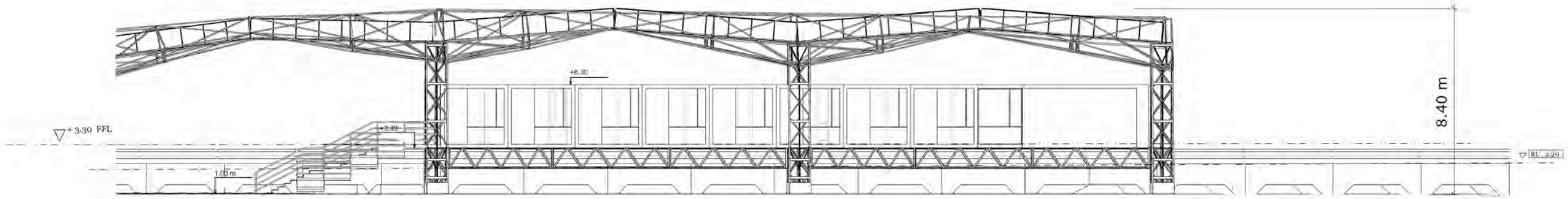
DESCRIPTION
SITE ELEVATIONS 1:250 @A1 size
INFRASTRUCTURE @ SERVICES

DRAWN BY
BP

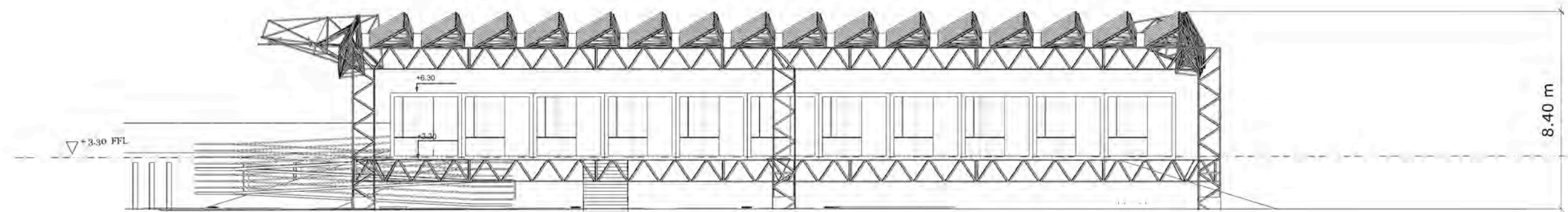
ISSUE: planning
28.08.2018
REVISIONS
12.12.2017
11.02.2018
20.02.2018

16.08.2018
20.08.2018
25.08.2018

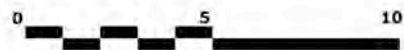




Elevation North
1:100@A1



Elevation West
1:100@A1



PROJECT
NUNDUK Spa Retreat

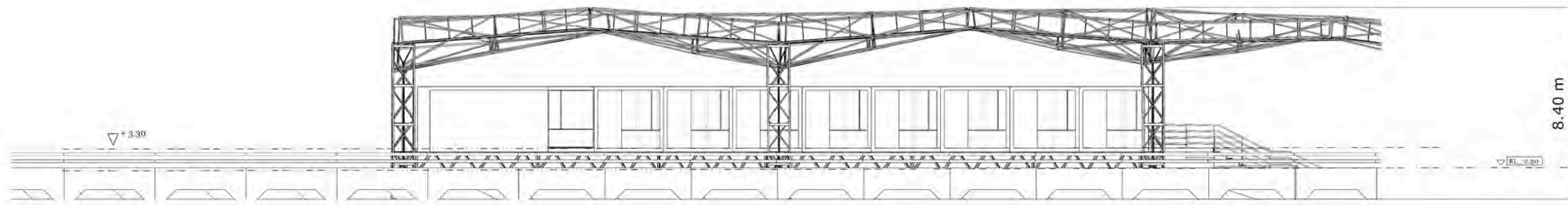
DESCRIPTION
STAFF ACCOMMODATION 4200 @ A1 site
ELEVATIONS

DRAWN BY
BP

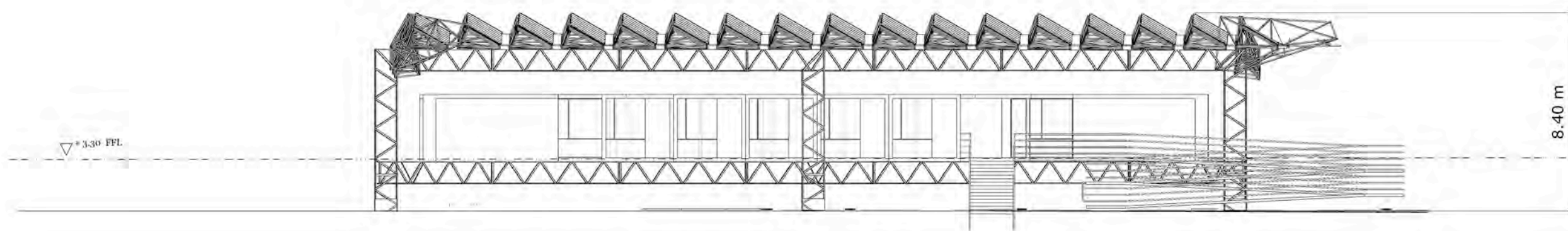
ISSUE planning
28.08.2018
REVISIONS
12.12.2017
11.02.2018

16.08.2018
20.08.2018
05.08.2018

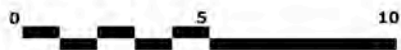
NUNDUK
a.48



Elevation South
1:100@A1



Elevation East
1:100@A1



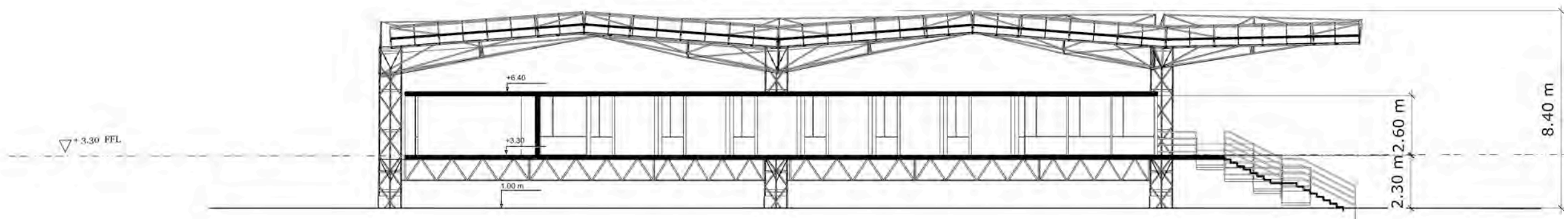
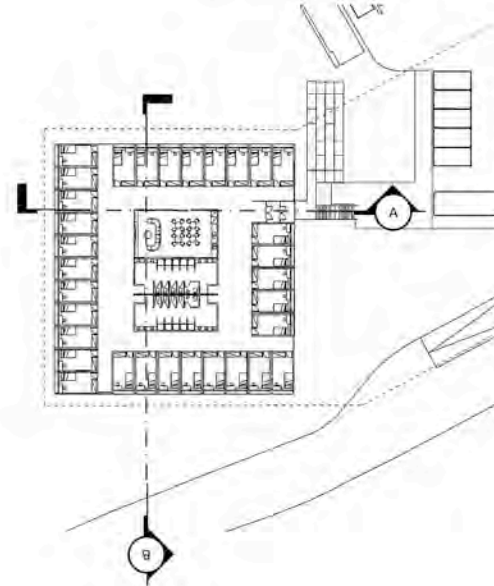
PROJECT
NUNDUK Spa Retreat

DESCRIPTION
STAFF ACCOMMODATION (1100 @ A1 size)
ELEVATIONS

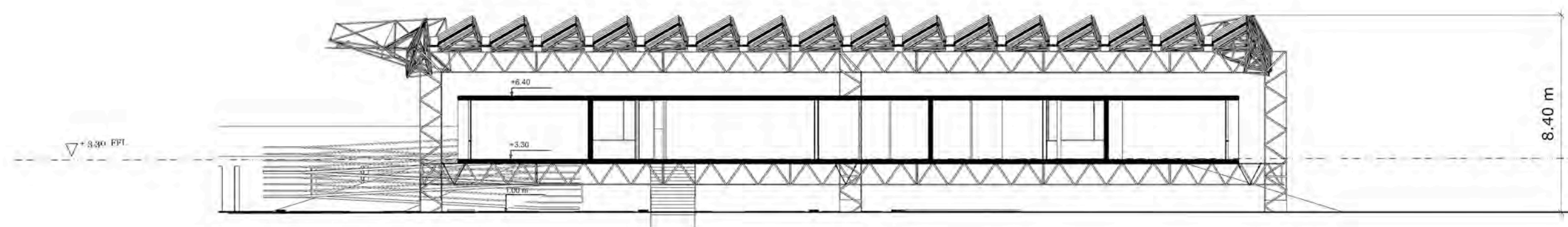
DRAWN BY
BP

ISSUE planning
28.08.2018
REVISIONS
12.02.2017
11.02.2018

16.08.2018
20.08.2018
05.08.2018



Section A
1:100@A1



Section B
1:100@A1

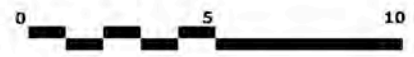
PROJECT
NUNDUK Spa Retreat

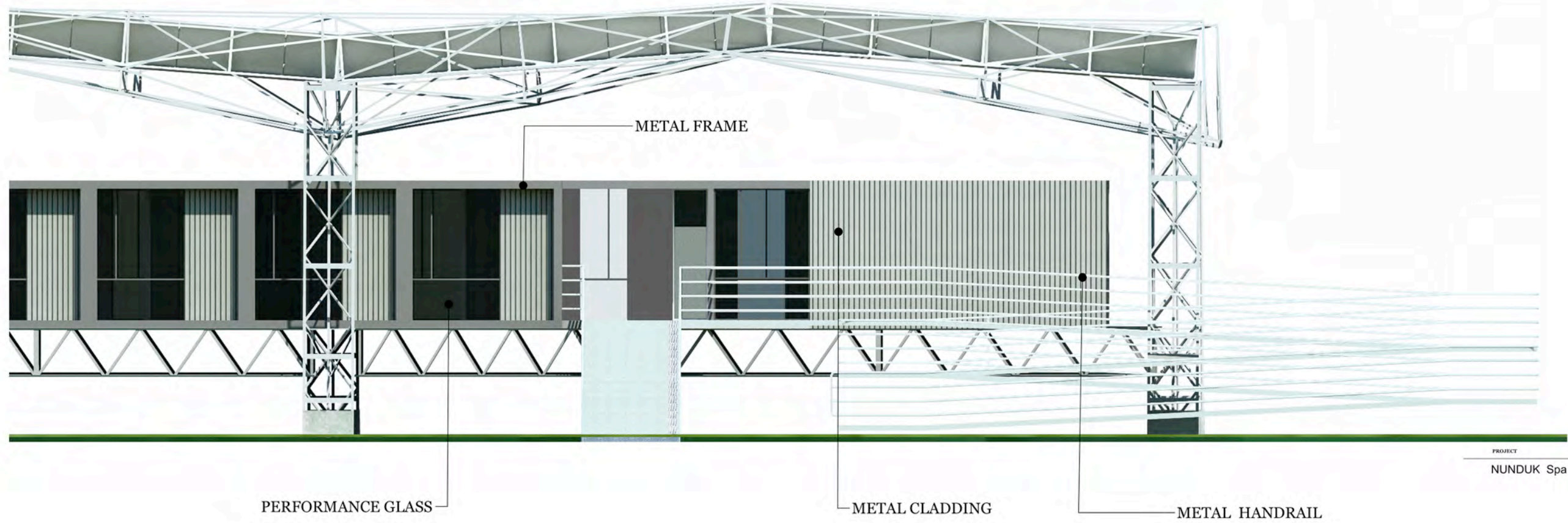
DESCRIPTION
STAFF ACCOMMODATION @ scale 1:100 A_1 size
SECTIONS

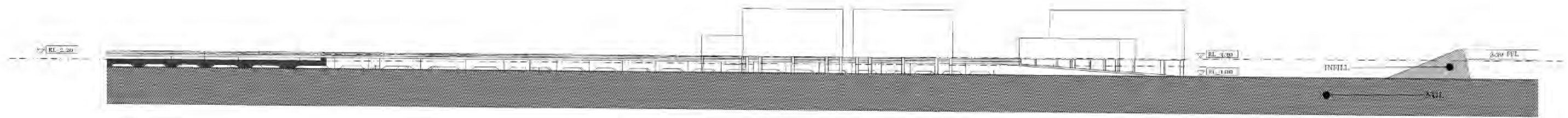
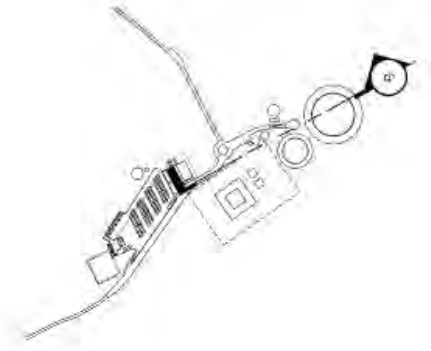
DRAWN BY
BP

ISSUE planning
28.08.2018
REVISIONS
12.12.2017
11.02.2018

16.08.2018
20.08.2018
09.08.2018



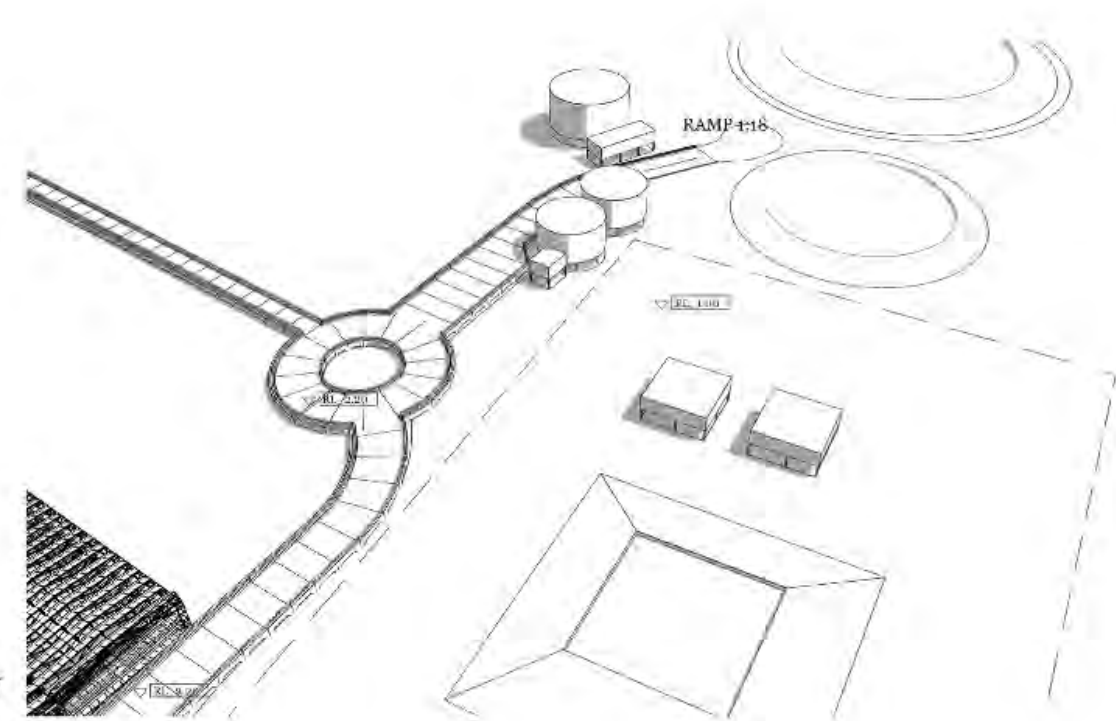




Section
1:200@A1

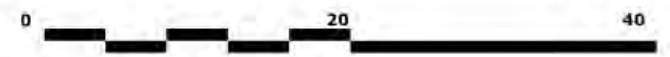


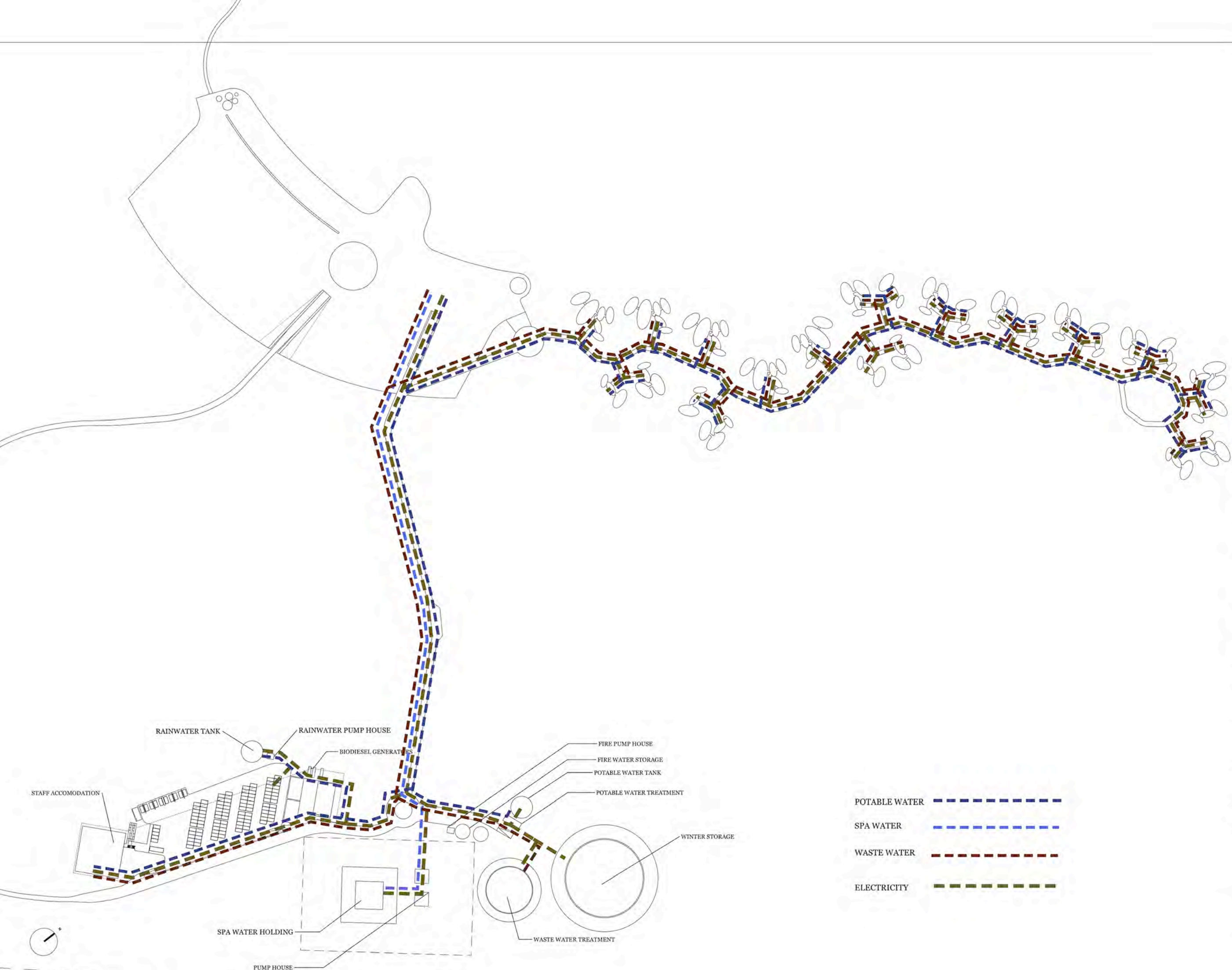
PROJECT
NUNDUK Spa Retreat



DESCRIPTION
INFRASTRUCTURE PRECINCT SERVICE ROAD SECTION (250 g) A_1100
DESIGNED BY
BP
DATE OF DRAWING
08-08-2018
REVISIONS
11-02-2018
21-02-2018
16-08-2018
20-08-2018

INFRASTRUCTURE PRECINCT_ SERVICE ROAD AERIAL VIEW





PROJECT
NUNDUK Spa Retreat

DESCRIPTION
INFRASTRUCTURE/SERVICES LAYOUT

DRAWN BY
BP

ISSUE: planning
28.08.2018
REVISIONS

28.08.2018