

GATE 01



GATE 03
Cathodic Protection Pillar
(Intr Rd 2 & 3)



GATE 19
PARKS VICTORIA



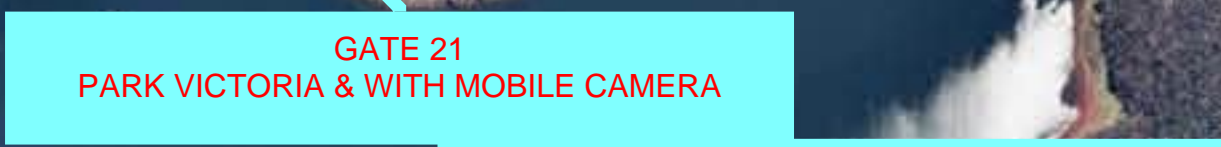
GATE 04
(Opposite 'Timber Sales')



OUTFALL TO CREEK



GATE 16 - ACCESS OFF SILVAN RD



GATE 21
PARK VICTORIA & WITH MOBILE CAMERA



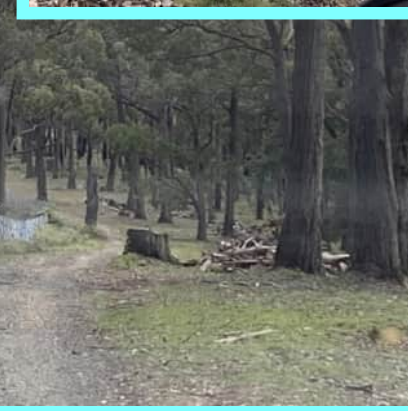
GATE 17



GATE 02
MW OFFICE ENTRY



GATE 15



GATE 14
"CAUTION DO NOT ENTER"
TAPE



GATE 05 - 06
SWALE DRAIN ADJ FENCE & DRAINAGE
CROSSING

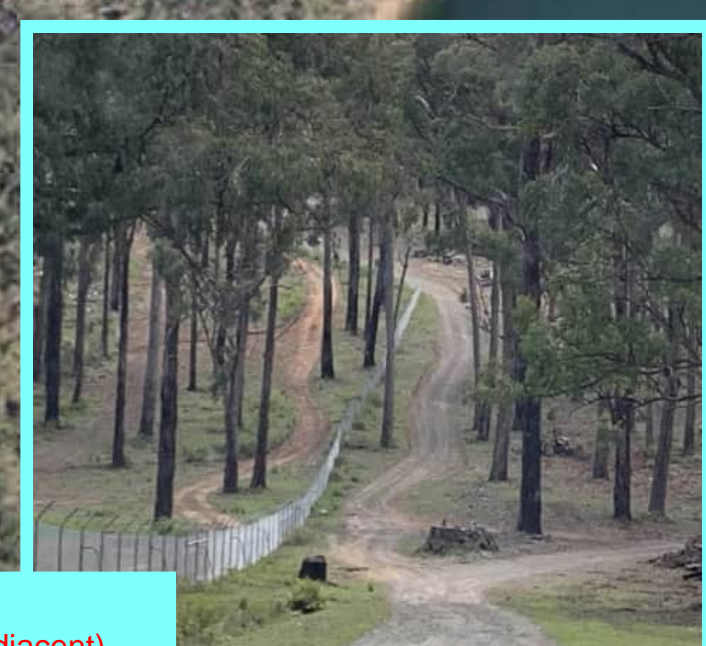


TREE ON FENCELINE (COUNCIL) & CLEARED AREA
EXAMPLE



GATE 12 & POTENTIAL
COMPOUND
(Entry off Silvan Road)

PARKS VIC BOARD TRACK



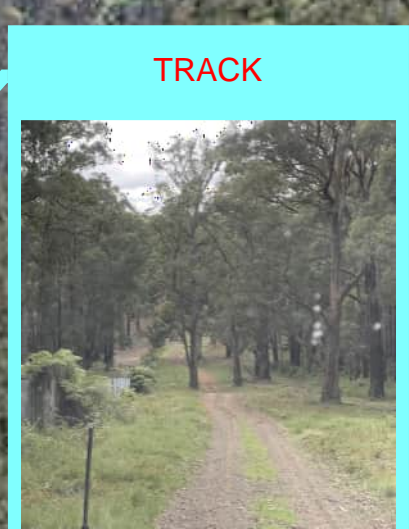
GATE 13
(ParksVic entry adjacent)

MONIBULK ROAD
FERNDALE ROAD
SPRING ROAD



GATE 07

WISEMAN ROAD



TRACK



TRACK

ANDERSON ROAD

GATE 07 - 08 (Pedestrian Gate)



MC

OLD EMERALD ROAD

GATE 07 - 08 (New indented Gate)

ACK

CHALET ROAD

GATE 10
(Large tree trunk blocking entry)

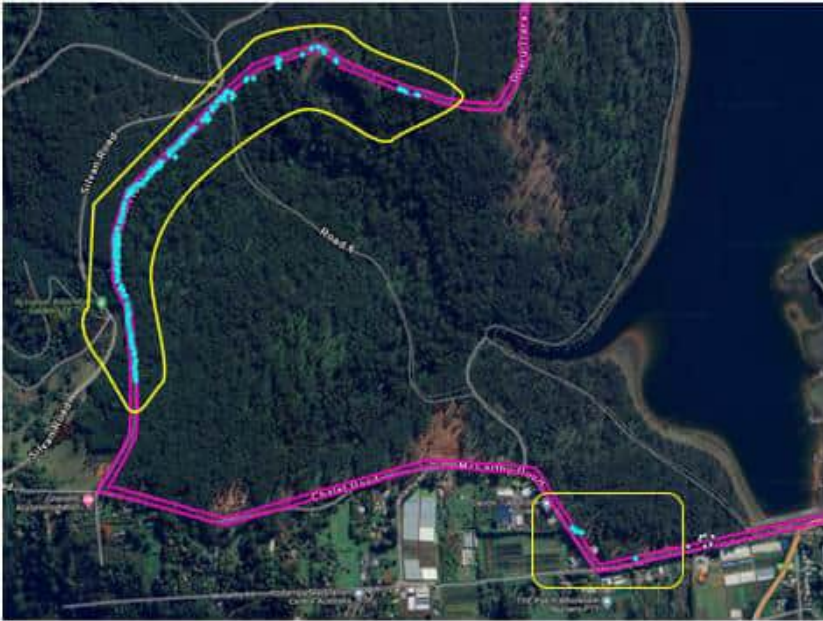
MCCARTHY ROAD

GATE
(Entry to WR49)

MONIBULK ROAD

GATE 09
(Opposite Nursery)

GATE 08
(Sub Stn adjacent entry -
Mobile security camera)



Victorian Flat-pea
(*Platylobium reflexum*)





Famine Flat-pea
(*Platylobium infecundum*)

