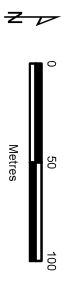


- Legend**
- Study Area
 - Proposed offset site
 - Hollow-bearing trees
 - In proposed extension area
 - In potential offset area



Figure 7
Location of hollow-bearing trees
 Ecological Services: WA375,
 Yarra Valley Quarries,
 Launching Place



Map Scale: 1:3,500 @ A4
 Coordinate System: GDA2020 MGA Zone 55



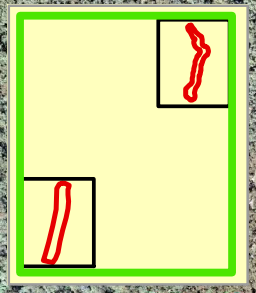
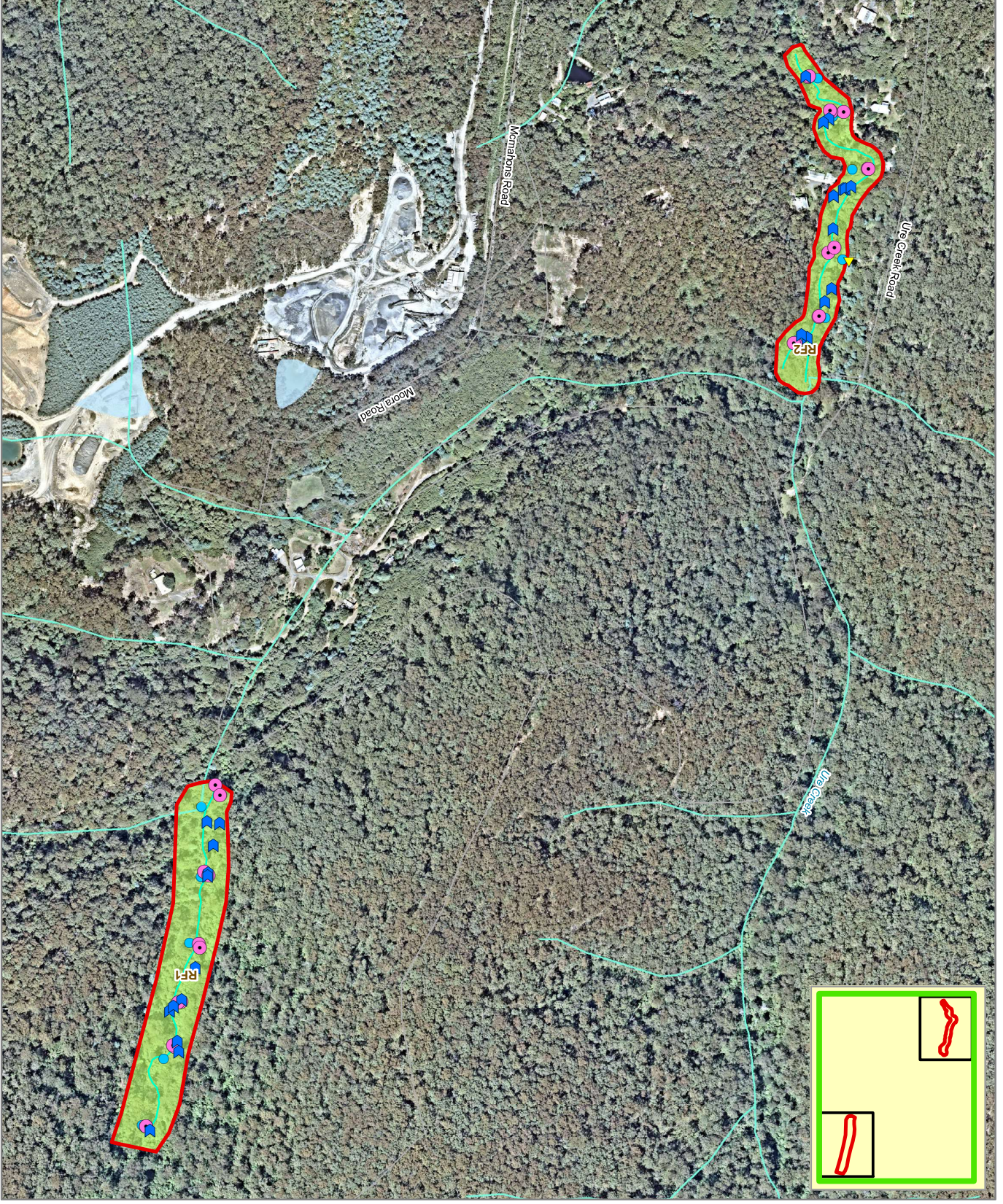
Verbatim Data: The State of Victoria does not warrant the accuracy or completeness of information in this publication and any person using or relying upon such information does so on the basis that the State of Victoria shall bear no responsibility or liability whatsoever for any errors, faults, omissions or omissions in the information.

14216 Figure 7 Hollow-bearing Trees_G2019012024.dwg/figures

Figure 8 Overview
Ecological features
 for Dandy Premix Quarry
 site, Launching Place

- Legend**
- Study Area
 - ▲ Burrowing Crayfish burrow locations
 - Photo points
 - Water Quality - Testing Locations
 - ▼ Possum drey

- Creek line
- Ecological Vegetation Class
- Riparian Forest (EVC 18)







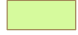

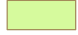
Map Data: The State of Victoria does not warrant the accuracy or completeness of information in this publication and any person using or relying upon such information in this publication and any person using or shall bear no responsibility or liability whatsoever for any errors, faults, defects or omissions in the information.

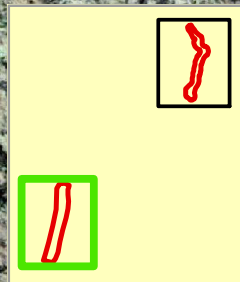
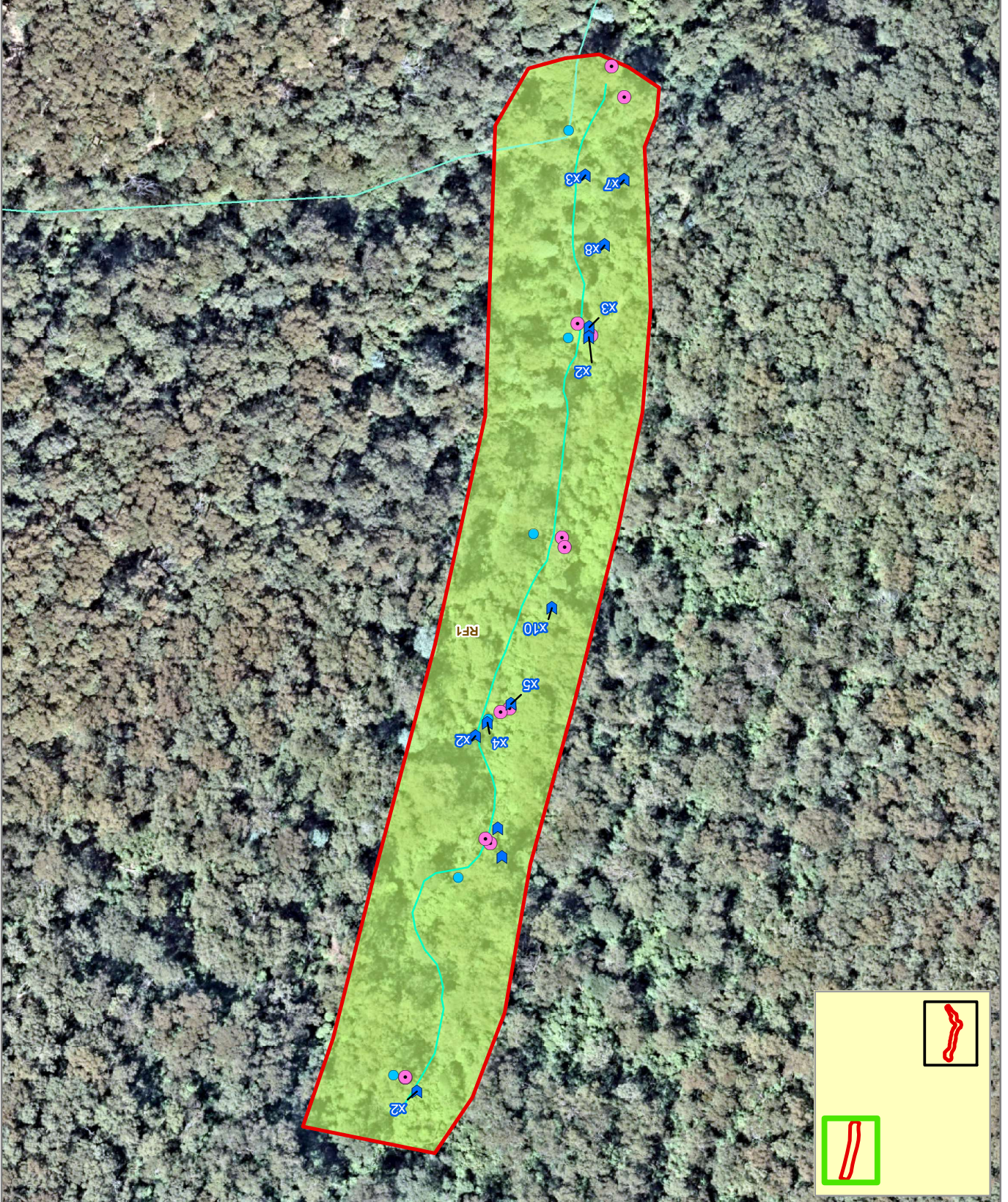
14246_Fig08_EcoFeatIP_MBG20_CS 19/06/2024 dvaladarens

Figure 8a
Ecological features
for Dandy Premix Quarry
Creekline Assessments
site, Launching Place

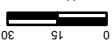
Legend

-  Study Area
-  Burrowing Crayfish burrow locations
-  Photo points
-  Water Quality - Testing Locations

-  Ecological Vegetation Class
-  Creek line
-  Riparian Forest (EVC 18)








Map Scale: 1:2,100 @ A4
Coordinate System:
GDA2020 MGA Zone 55

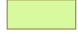

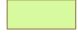


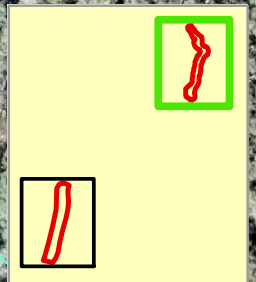
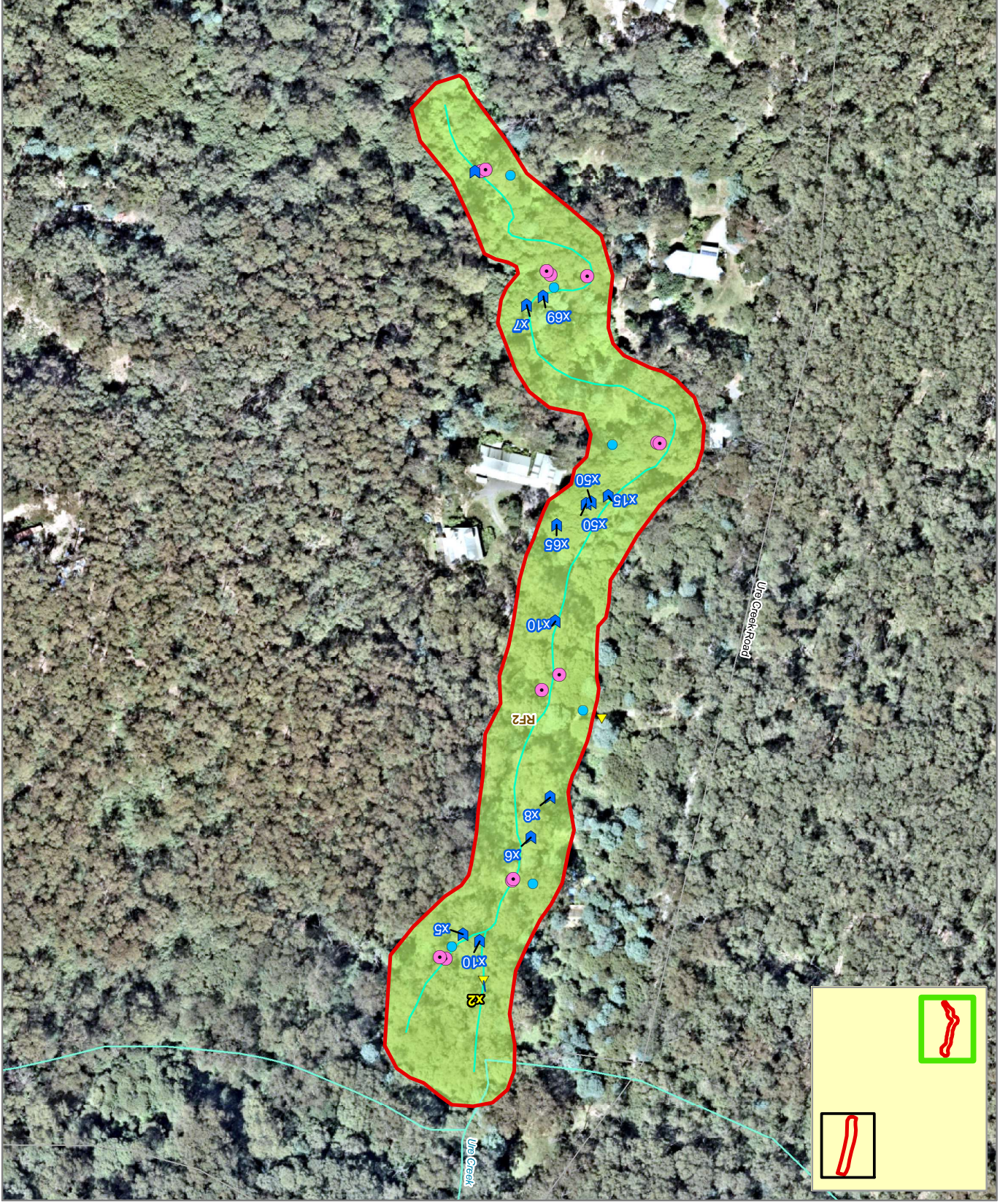
VekMap Data: The State of Victoria does not warrant the accuracy or completeness of information in this publication and any person using or relying upon such information in this publication and any person using shall bear no responsibility or liability whatsoever for any errors, faults, defects or omissions in the information.

Figure 8b
Ecological features
for Dandy Premix Quarry
Creekline Assessments
site, Launching Place

Legend

-  Study Area
-  Burrowing Crayfish burrow locations
-  Possum drey locations
-  Photo points
-  Water Quality - Testing Locations

-  Ecological Vegetation Class
-  Creek line
-  Riparian Forest (EVC 18)



Map Scale: 1:2,100 @ A4
Coordinate System:
GDA2020 MGA Zone 55

Vekmap Data: The State of Victoria does not warrant the accuracy or completeness of information in this publication and any person using or relying upon such information in the publication and any person using shall bear no responsibility or liability whatsoever for any errors, faults, defects or omissions in the information.

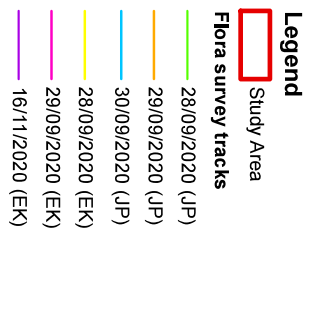
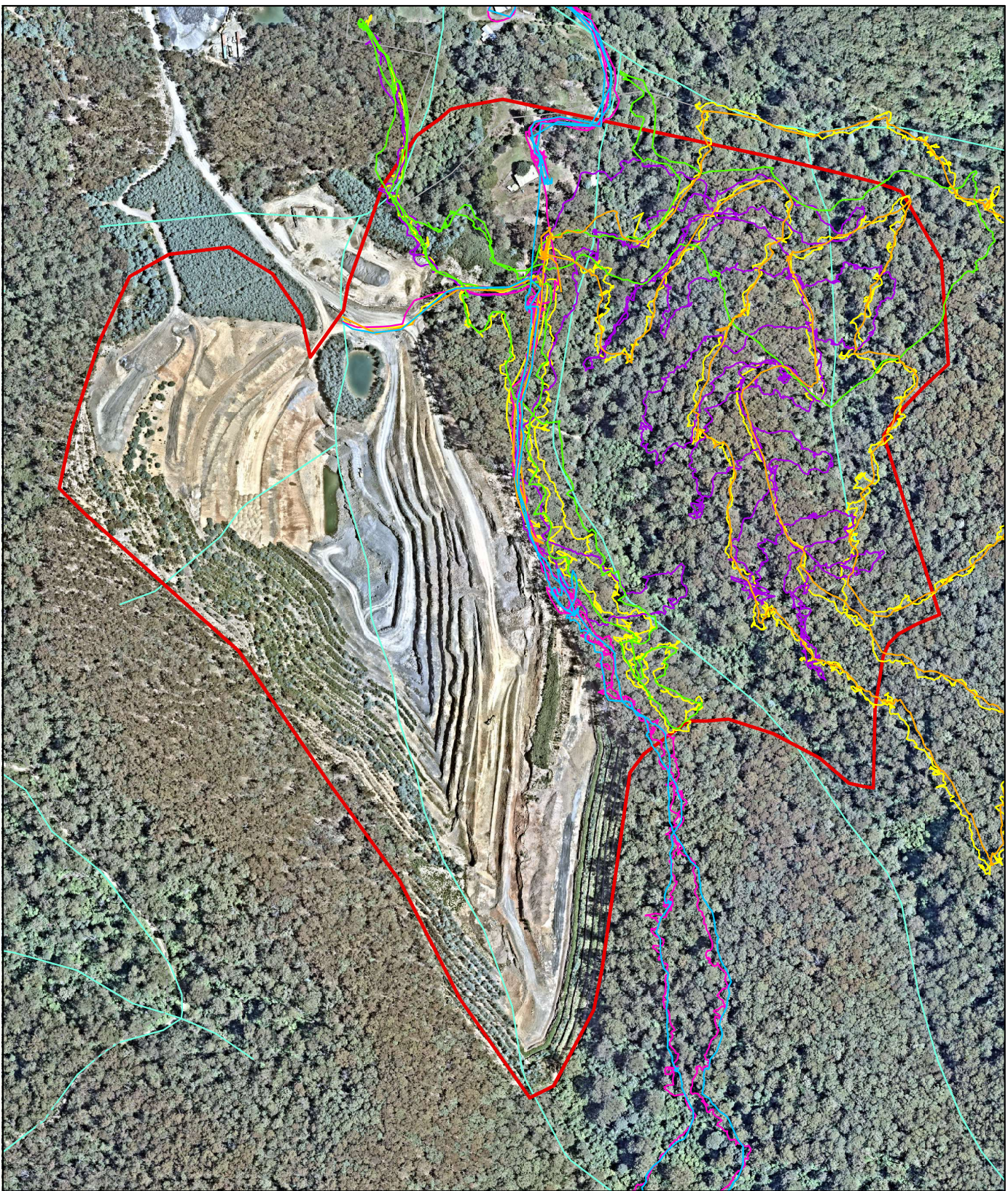
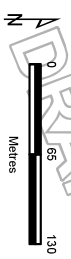


Figure 9
Targeted flora survey tracks
 Ecological Services: W/375,
 Yarra Valley Quarries
 Launching Place



Map Scale: 1:5,000 @ A4
 Coordinate System: GDA2020 WGA Zone 55



Disclaimer: The State of Victoria does not warrant the accuracy or reliability of the information provided in this report and any person using or relying upon such information does so on the basis that the State of Victoria shall bear no responsibility or liability whatsoever for any errors, faults, defects or omissions in the information.

14148_Eng09 FloraSurvey_G20 24/09/2024 revision