

**Legend**

-  Highway
-  Road
-  Cannie Wind Farm
-  Referral Area
-  Local Government Area
-  VNI West Corridor



Coordinate System:  
GDA2020 MGA Zone 54

Date: 04/03/2024

Created By: CS

Drawing Size: A3

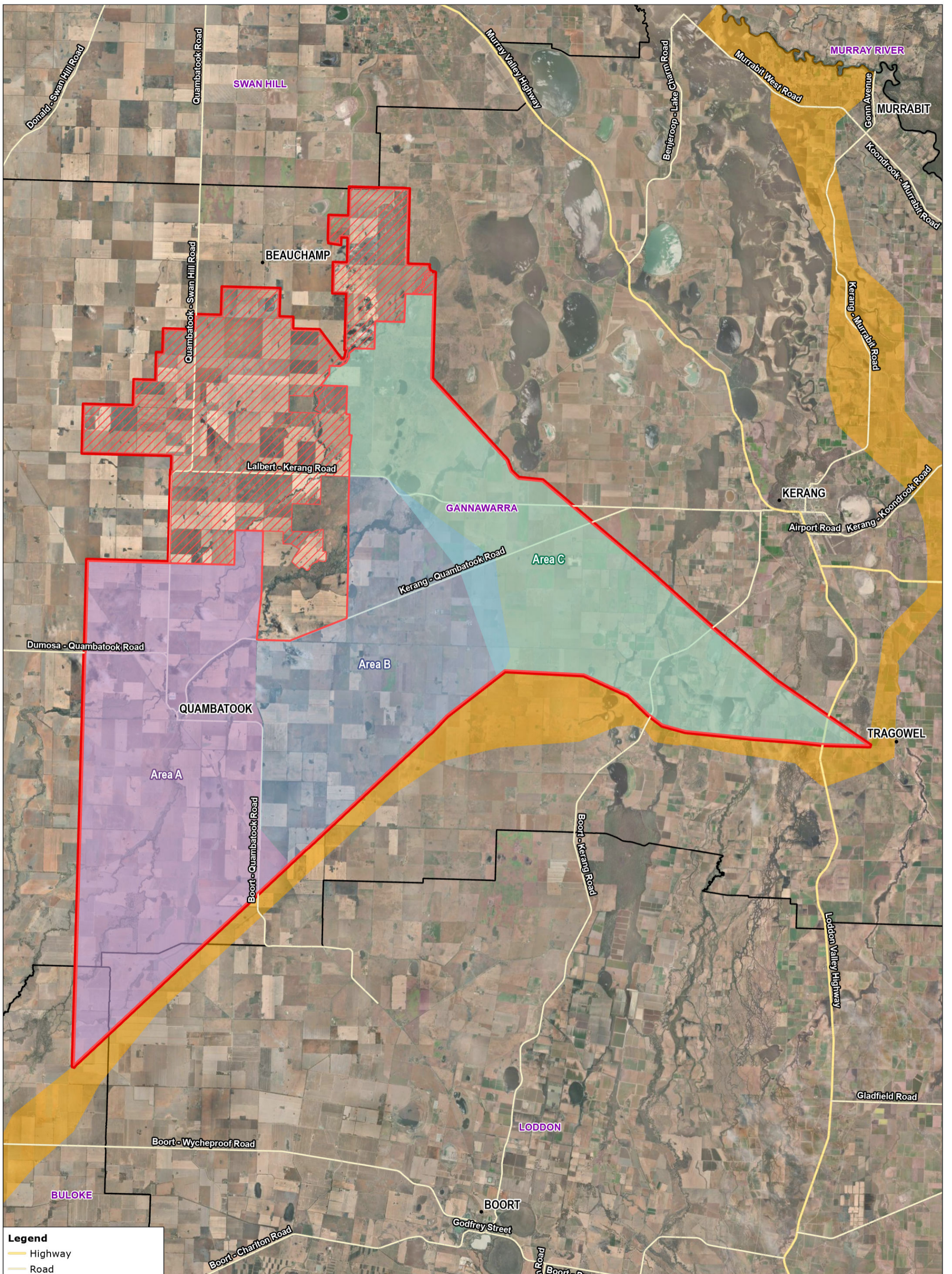
0 2 4 6KM

1:200,000

**F1 - Referral Area**

**Cannie Wind Farm**  
RES Australia Pty Limited





**Legend**

- Highway
- Road
- Referral Area
- Cannie Wind Farm
- Transmission Corridor Study Area
- Local Government Area
- VNI West Corridor



Coordinate System:  
GDA2020 MGA Zone 54

Date: 04/03/2024

Created By: CS

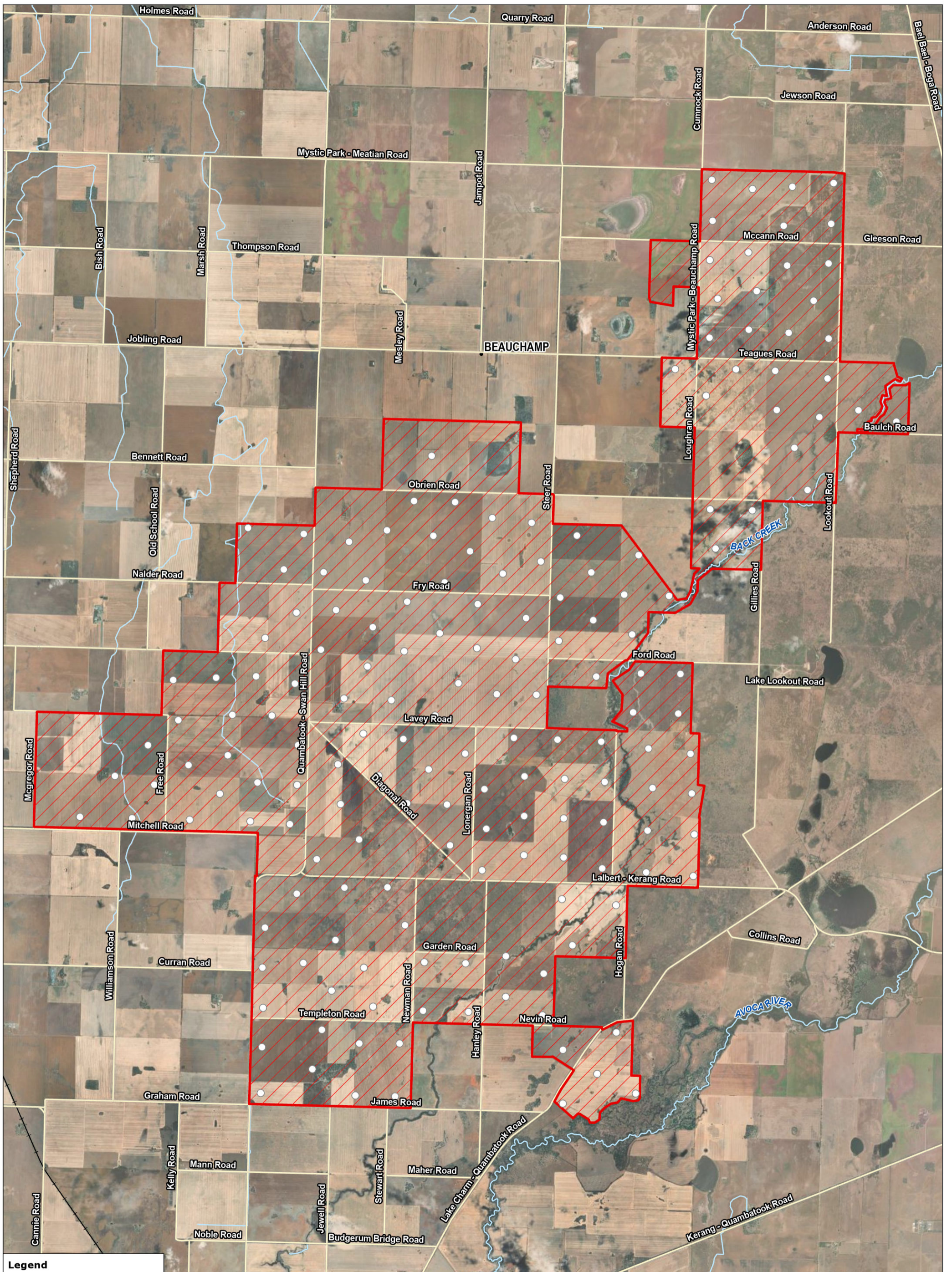
Drawing Size: A3

0 2 4 6KM

1:200,000

**F2 - Cannie Wind Farm & Transmission Corridor Study Area**

**Cannie Wind Farm**  
RES Australia Pty Limited



**Legend**

- Turbine (Indicative)
- Highway
- Road
- Railway
- Major Watercourse
- ▭ Cannie Wind Farm Area



Coordinate System:  
GDA2020 MGA Zone 54

Date: 04/03/2024

Created By: CS

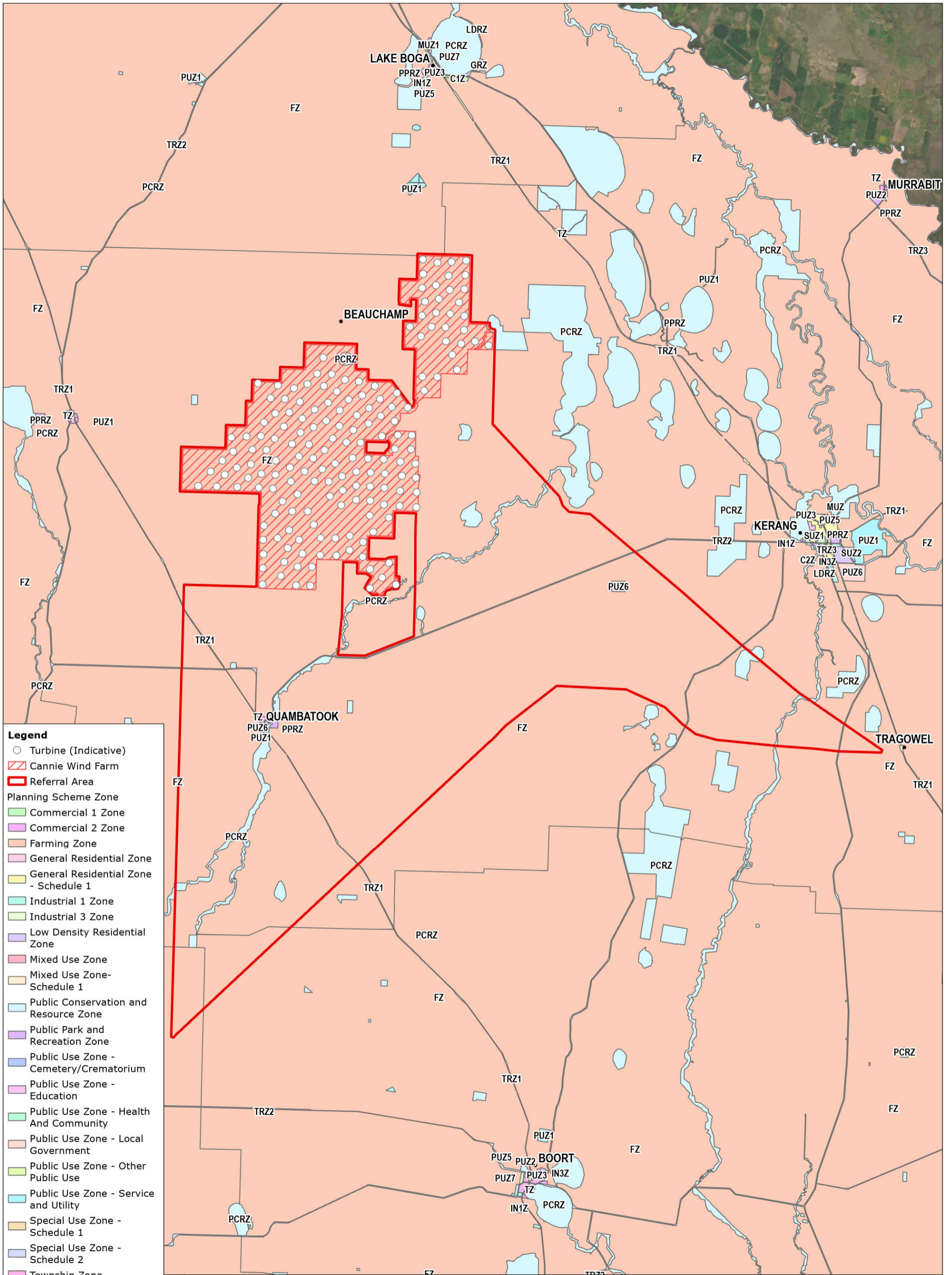
Drawing Size: A3

0 0.8 1.6 2.4KM

1:80,000

**F3 - Indicative Wind Farm Layout**

**Cannie Wind Farm**  
RES Australia Pty Limited



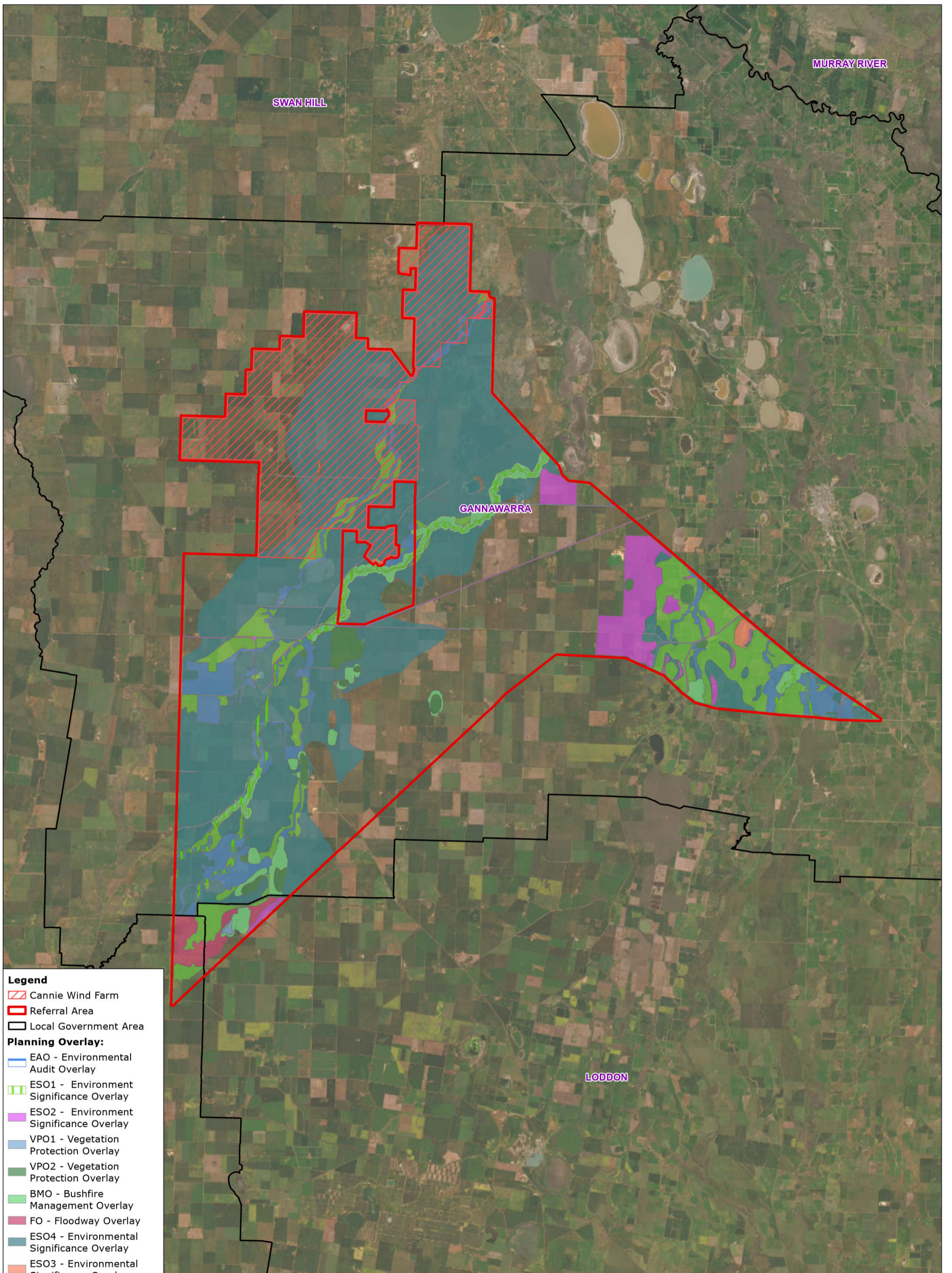
- Legend**
- Turbine (Indicative)
  - ▨ Cannie Wind Farm
  - ▭ Referral Area
  - Planning Scheme Zone**
  - Commercial 1 Zone
  - Commercial 2 Zone
  - Farming Zone
  - General Residential Zone
  - General Residential Zone - Schedule 1
  - Industrial 1 Zone
  - Industrial 3 Zone
  - Low Density Residential Zone
  - Mixed Use Zone
  - Mixed Use Zone - Schedule 1
  - Public Conservation and Resource Zone
  - Public Park and Recreation Zone
  - Public Use Zone - Cemetery/Crematorium
  - Public Use Zone - Education
  - Public Use Zone - Health And Community
  - Public Use Zone - Local Government
  - Public Use Zone - Other Public Use
  - Public Use Zone - Service and Utility
  - Special Use Zone - Schedule 1
  - Special Use Zone - Schedule 2
  - Township Zone
  - Transport Zone 1 - State Transport Infrastructure
  - Transport Zone 1 - Principal Road Network
  - Transport Zone 3 - Significant Municipal Road



Coordinate System:  
GDA2020 MGA Zone 54  
Date: 06/03/2024  
Created By: CS  
Drawing Size: A3  
0 2 4 6KM  
1:225,000

**F4 - Planning Scheme Zones**

**Cannie Wind Farm**  
RES Australia Pty Limited



**Legend**

-  Cannie Wind Farm
-  Referral Area
-  Local Government Area
- Planning Overlay:**
-  EAO - Environmental Audit Overlay
-  ESO1 - Environment Significance Overlay
-  ESO2 - Environment Significance Overlay
-  VPO1 - Vegetation Protection Overlay
-  VPO2 - Vegetation Protection Overlay
-  BMO - Bushfire Management Overlay
-  FO - Floodway Overlay
-  ESO4 - Environmental Significance Overlay
-  ESO3 - Environmental Significance Overlay
-  LSIO - Land Subject to Inundation Overlay
-  RFO - Rural Floodway Overlay
-  SCO2 - Specific Controls Overlay



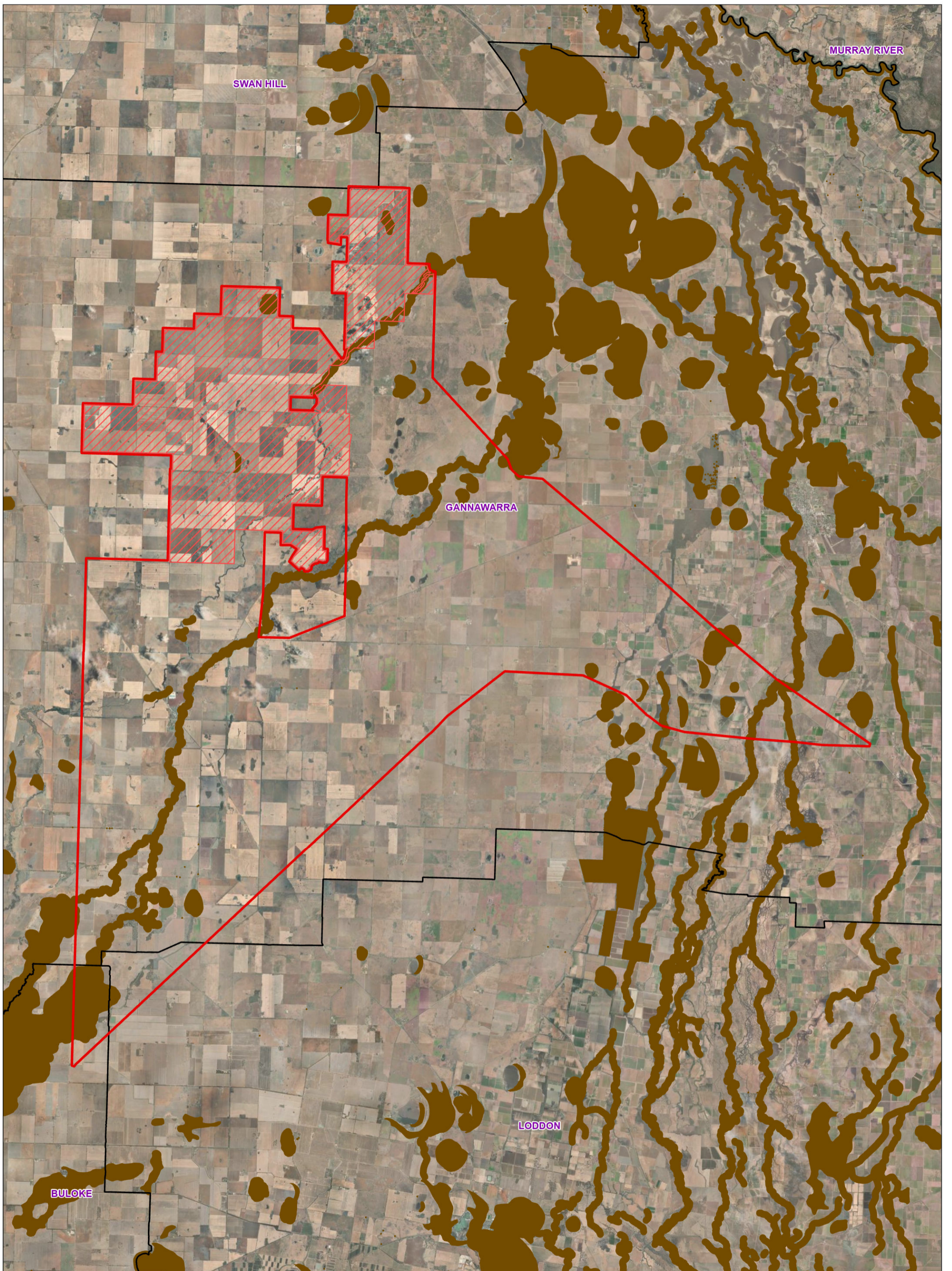
Coordinate System:  
GDA2020 MGA Zone 54  
Date: 04/03/2024  
Created By: CS  
Drawing Size: A3  
0 2.25 4.5 6.75KM  
1:225,000



**F5 - Planning Scheme Overlay**

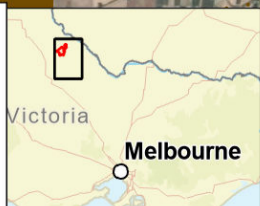
**Cannie Wind Farm**  
RES Australia Pty Limited





**Legend**

- Cannie Wind Farm
- Referral Area
- Local Government Area
- Area of Cultural Heritage Sensitivity



Coordinate System:  
GDA2020 MGA Zone 54

Date: 04/03/2024

Created By: CS


Drawing Size: A3

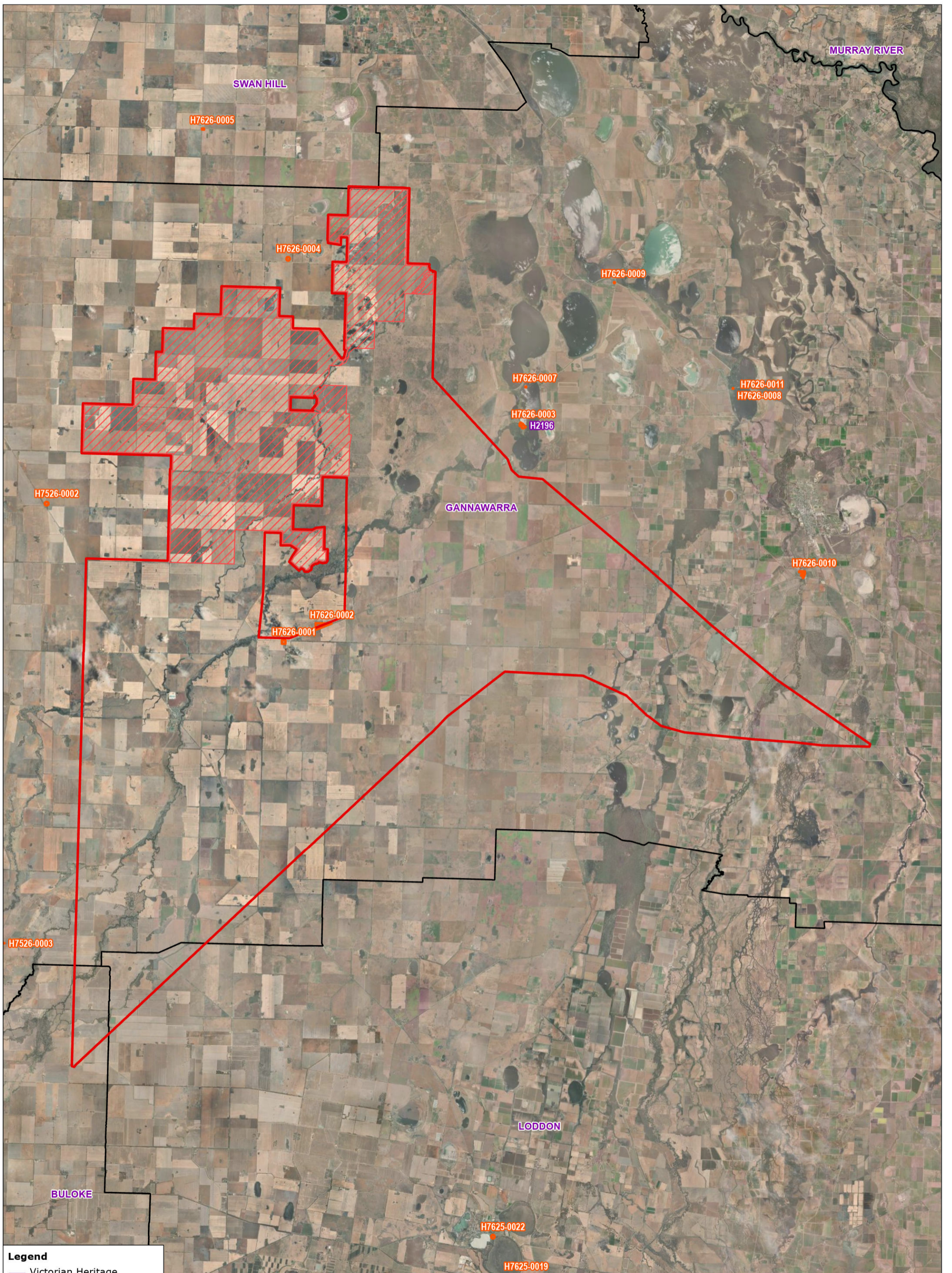
0 2 4 6KM

1:200,000

**F6 - Aboriginal Cultural Heritage**

**Cannie Wind Farm**  
RES Australia Pty Limited





**Legend**

-  Victorian Heritage Register
-  Victorian Heritage Inventory
-  Referral Area
-  Cannie Wind Farm
-  Local Government Area



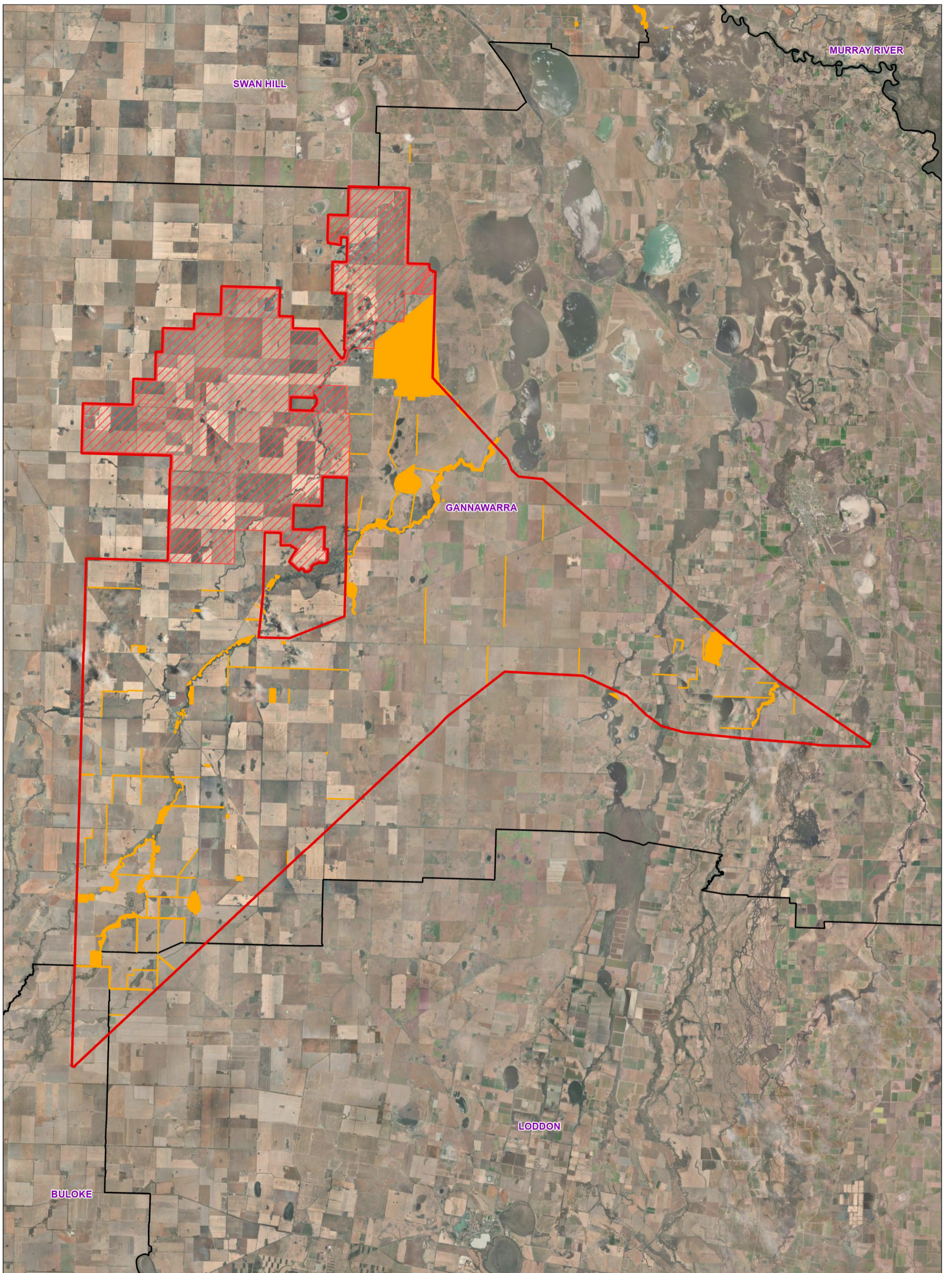
Coordinate System:  
GDA2020 MGA Zone 54  
Date: 04/03/2024  
Created By: CS  
Drawing Size: A3  
0 2 4 6KM



**F7 - Historic Heritage**

**Cannie Wind Farm**  
RES Australia Pty Limited





- Legend**
- Referral Area
  - Cannie Wind Farm
  - Crown Land Tenure
  - Local Government Area



Coordinate System:  
GDA2020 MGA Zone 54  
Date: 04/03/2024  
Created By: CS  
Drawing Size: A3  
0 2 4 6KM

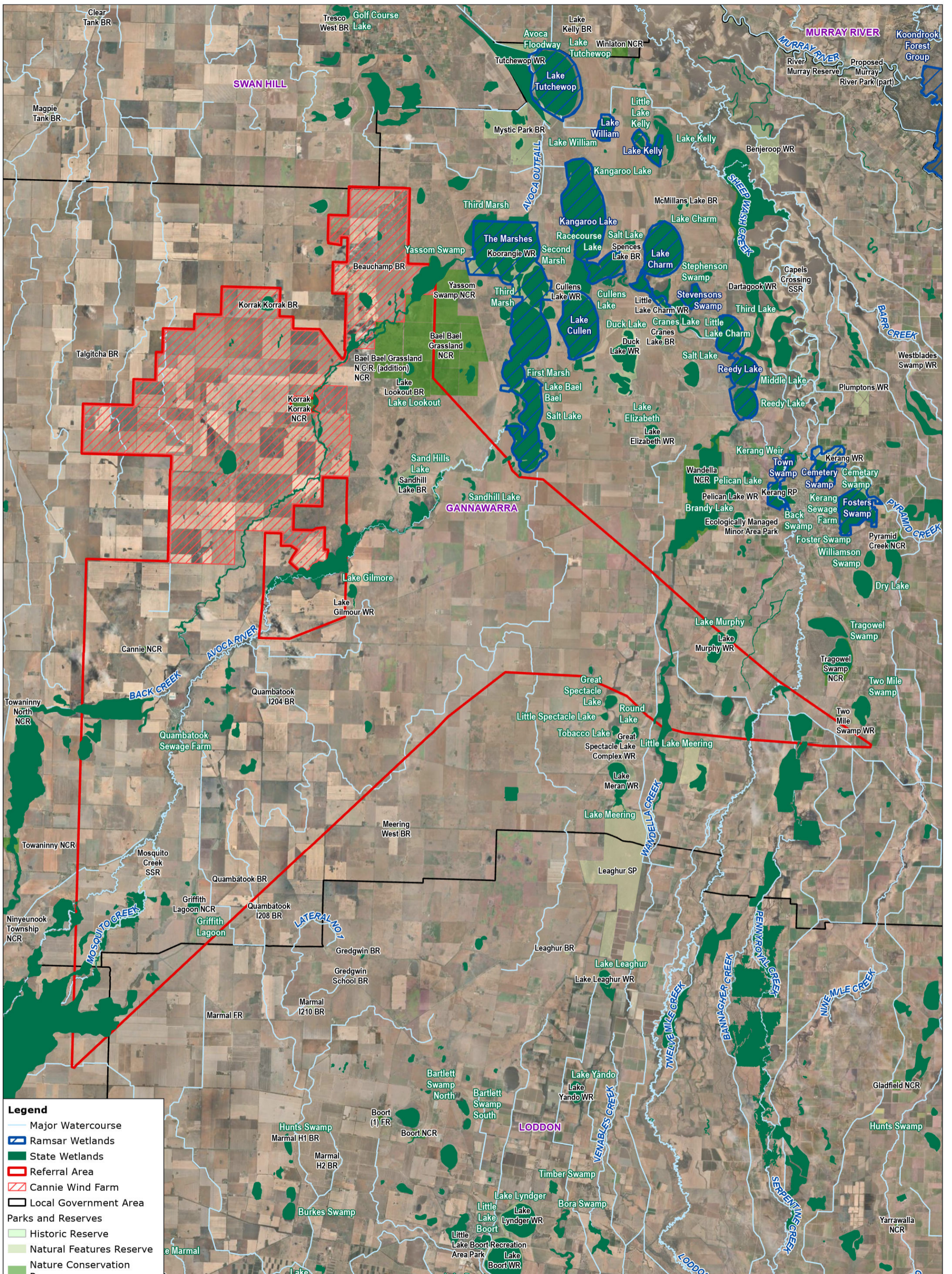


**F8 - Land Use and Tenure**

**Cannie Wind Farm**  
RES Australia Pty Limited







**Legend**

- Major Watercourse
- ▭ Ramsar Wetlands
- ▭ State Wetlands
- ▭ Referral Area
- ▭ Cannie Wind Farm
- ▭ Local Government Area
- Parks and Reserves**
- ▭ Historic Reserve
- ▭ Natural Features Reserve
- ▭ Nature Conservation Reserve
- ▭ Other
- ▭ Regional Park - Not Scheduled Under National Parks Act
- ▭ State Park - Schedule 2B, National Parks Act



Coordinate System:  
GDA2020 MGA Zone 54  
Date: 04/03/2024  
Created By: CS  
Drawing Size: A3  
0 2 4 6KM  
1:200,000



**F9 - Parks, Reserves, Waterways and Wetlands**

**Cannie Wind Farm**  
RES Australia Pty Limited

