



Numbered turbines



Wireframe model

XURBAN

Urban Design
Landscape Architecture
Visual Assessment

Suite 6, 60 Little Latrobe Street,
Melbourne Victoria 3000

P: 61 3 9642 8040
E: allan.wyatt@xurban.com.au

Layout

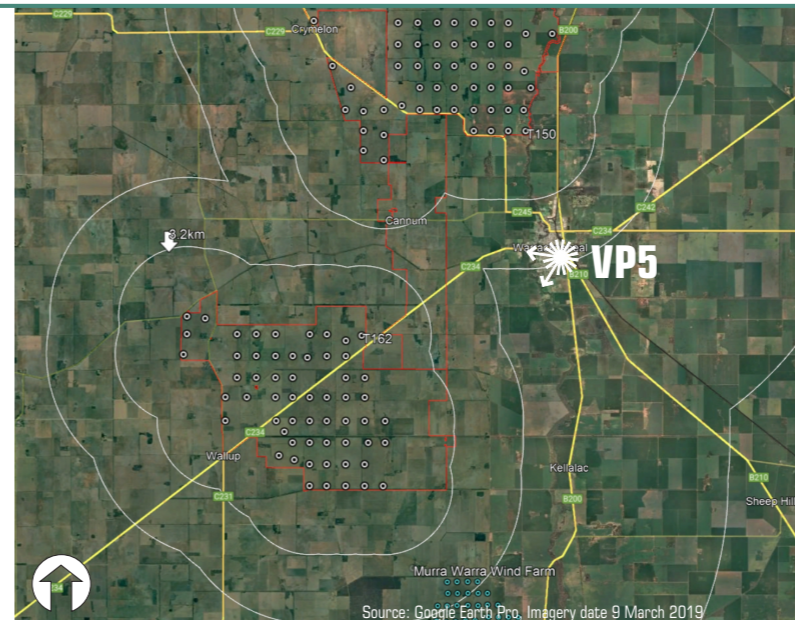
Wind turbine layout - V08-01

Photography data

Photography date: 12 May 2022 at 10.16AM
Camera: Nikon D5
Lens: 60mm

VP 5

Location data reference: Grid Datum: GDA94 Zone 54
Latitude: -36.261869°
Longitude: 142.403889°
Ground level: 111m
Distance to nearest visible wind turbine: (T162) 9.9km
Distance to nearest wind turbine: (T150) 6.5km
T150 Bearing 342° approx, T162 Bearing 252° approx



Project:
Warracknabeal Energy Park

Client:
Warracknabeal Energy Park Pty Ltd

Location:
**Henty Highway /
Warracknabeal southern entry**

Wireframe & numbered turbines

Date: 19 May 2022 Project No: 15187

Drawing: **Viewpoint 5** Sheet: **5.04**