

PHOTO 6



PHOTO 7

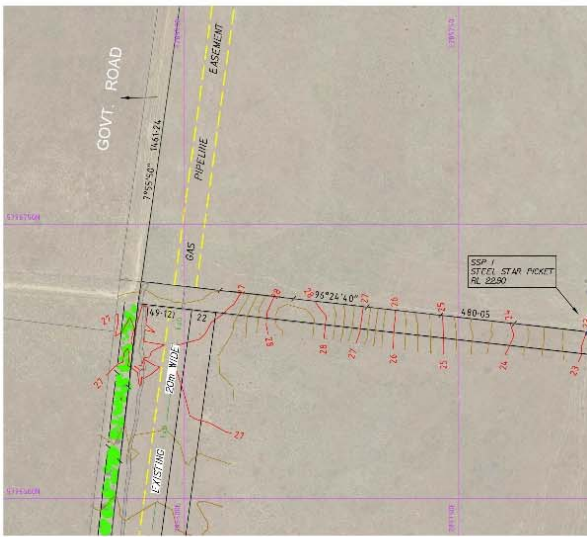
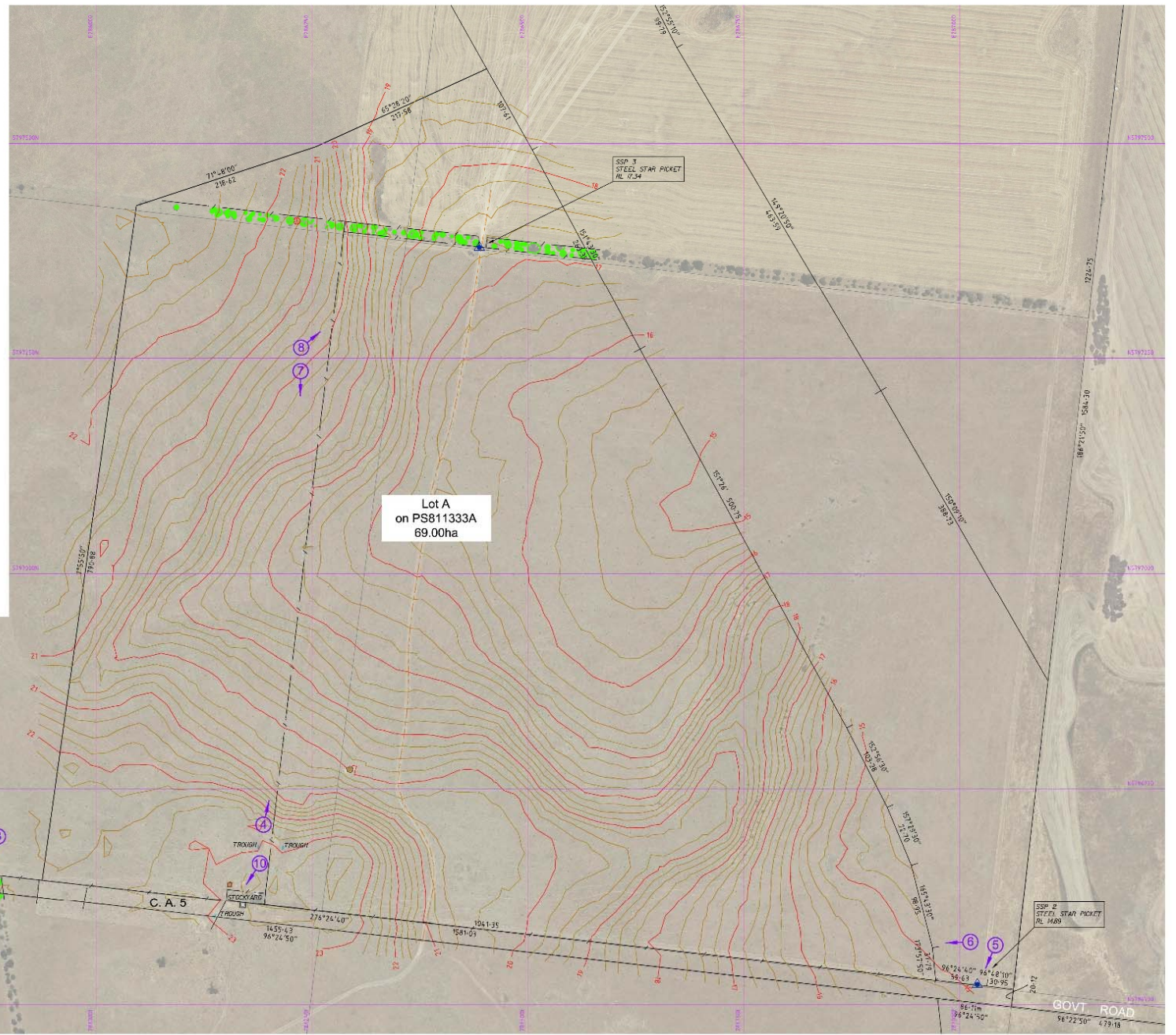


PHOTO 10



LEGEND

- Proposed Title Boundary
- Road Centreline
- Bitumen Edge
- Lane Marking
- Edge of Formation
- Centreline of Formation
- Toe of Bank
- Top of Bank
- Open Drain
- Back of Kerb
- Invert of Kerb
- Lip of Kerb
- ExT Existing Underground Telecommunication
- ExG Existing Underground Gas
- ExU Existing Underground Unclassified Utilities
- Easement
- Cardbase
- Fence
- Major Contour
- Minor Contour
- Edge of Vegetation
- SEP - Side Entry Pit
- Telecommunication Pit
- Telecommunication Marker Post
- Gas Marker Post
- Tree
- Dead Tree
- Tap
- Sign
- Multiple Mounted Sign
- Bollard
- Fire Hydrant
- Stop Valve
- Water Meter
- Gate
- Elevation



SEE SHEET 6

SEE SHEET 1



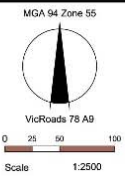
REVISION	DATE	APPO
- Initial Release	01/05/17	BM

NOTES:
 All parcel boundaries shown gray in this date are derived from Cadastral Map Base and are indicative only.
 All fences are Post & Wire unless otherwise specified.
 Exact location of utilities has not been proven and are based on DBVD information.
 Contour Interval: 0.25m
 Grid Interval: 250m

LEVELS MAY EXIST THAT HAVE BEEN TURNED OFF FOR PLOTTING CLARITY

01 INDICATES PHOTOGRAPH DIRECTION AND NUMBER

PRELIMINARY



Drawn	Checked	Approved	Date
L. Stoiger & S. Matti	A. Auleobux	B. Munari	11th April 2017
			24th April 2017
			1st May 2017

Feature And Level Survey
 Little River Road
 Little River

Melbourne Water Corporation Ref. SVY170022
Drawing No. SVY170022/14 Rev -
 Sheet No. 14 of 14 1900s65.dwg
 © SMEC Australia Pty Ltd ABN 47 065 475 149 A1