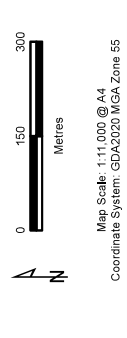


- Legend**
- Study Area
 - Proposed offset site
 - Call playback location
 - Camera location
 - Spotlighting transect
- Nest search transects**
- Survey date: 23/12/2020
 - Survey date: 14/01/2021
 - Survey date: 19/08/2021
 - Survey date: 2/09/2021



Figure 5 Overview
Fauna survey locations
 Ecological Services: WA375,
 Yarra Valley Quarries,
 Launching Place

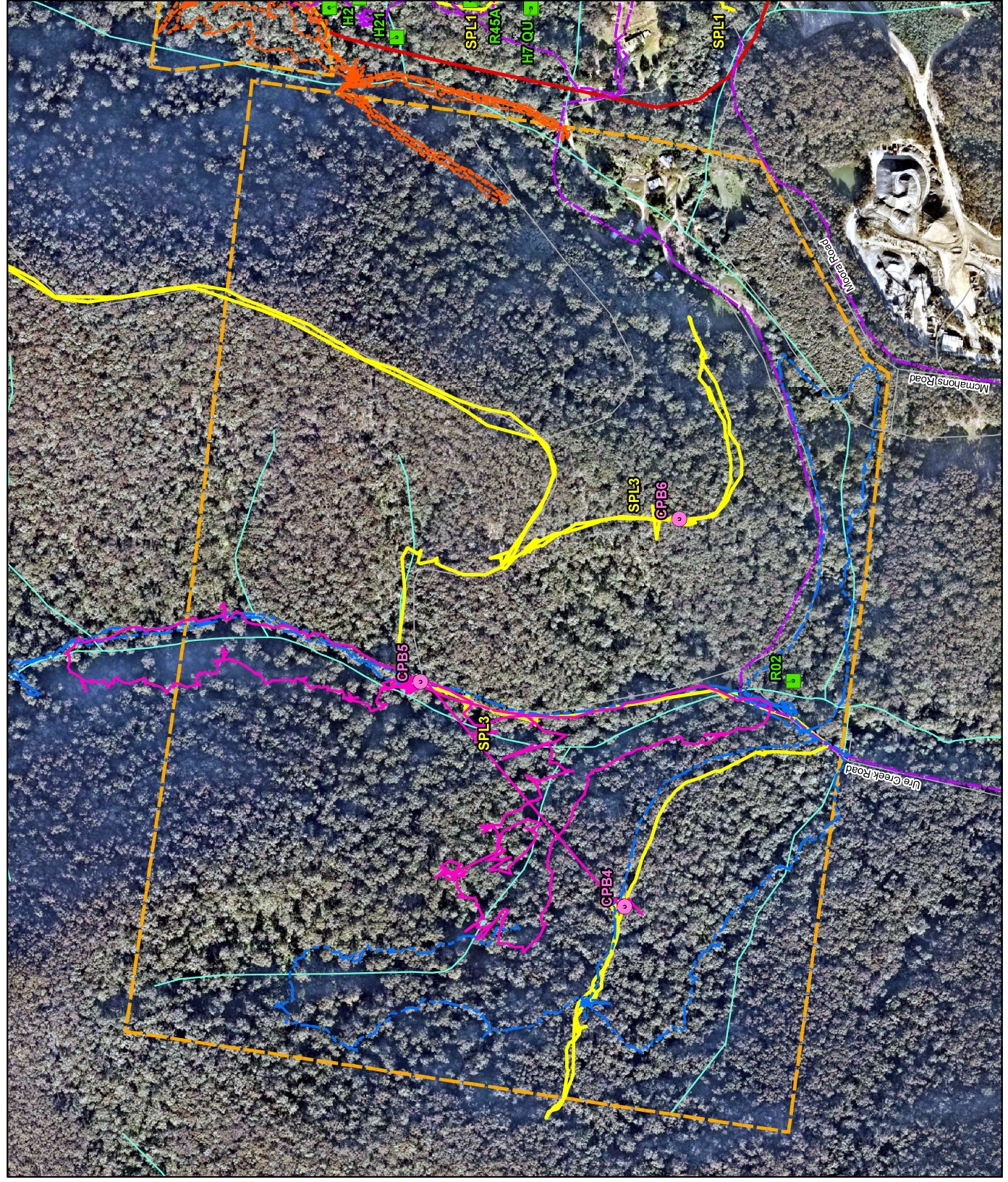


Map Scale: 1:11,000 @ A4
 Coordinate System: GDA2020 MGA Zone 55

ecology & heritage
 partners

Victoria Data: The State of Victoria does not warrant the accuracy or completeness of information in this publication and any person using or relying upon such information does so on the basis that the State of Victoria shall bear no responsibility or liability whatsoever for any errors, faults, defects or omissions in the information.

14246-Fm05_FaunaSurvey_MB_G20-19/04/2024.dwg@ecolines



- Legend**
- Study Area
 - Proposed offset site
 - Call playback location
 - Camera location
 - Spotlighting transect
- Nest search transects**
- Survey date: 23/12/2020
 - Survey date: 14/01/2021
 - Survey date: 19/08/2021
 - Survey date: 2/09/2021



Figure 5a
Fauna survey locations
 Ecological Services: WA375,
 Yarra Valley Quarries,
 Launching Place

Map Scale: 1:6,000 @ A4
 Coordinate System: GDA2020, MGA, Zone 55

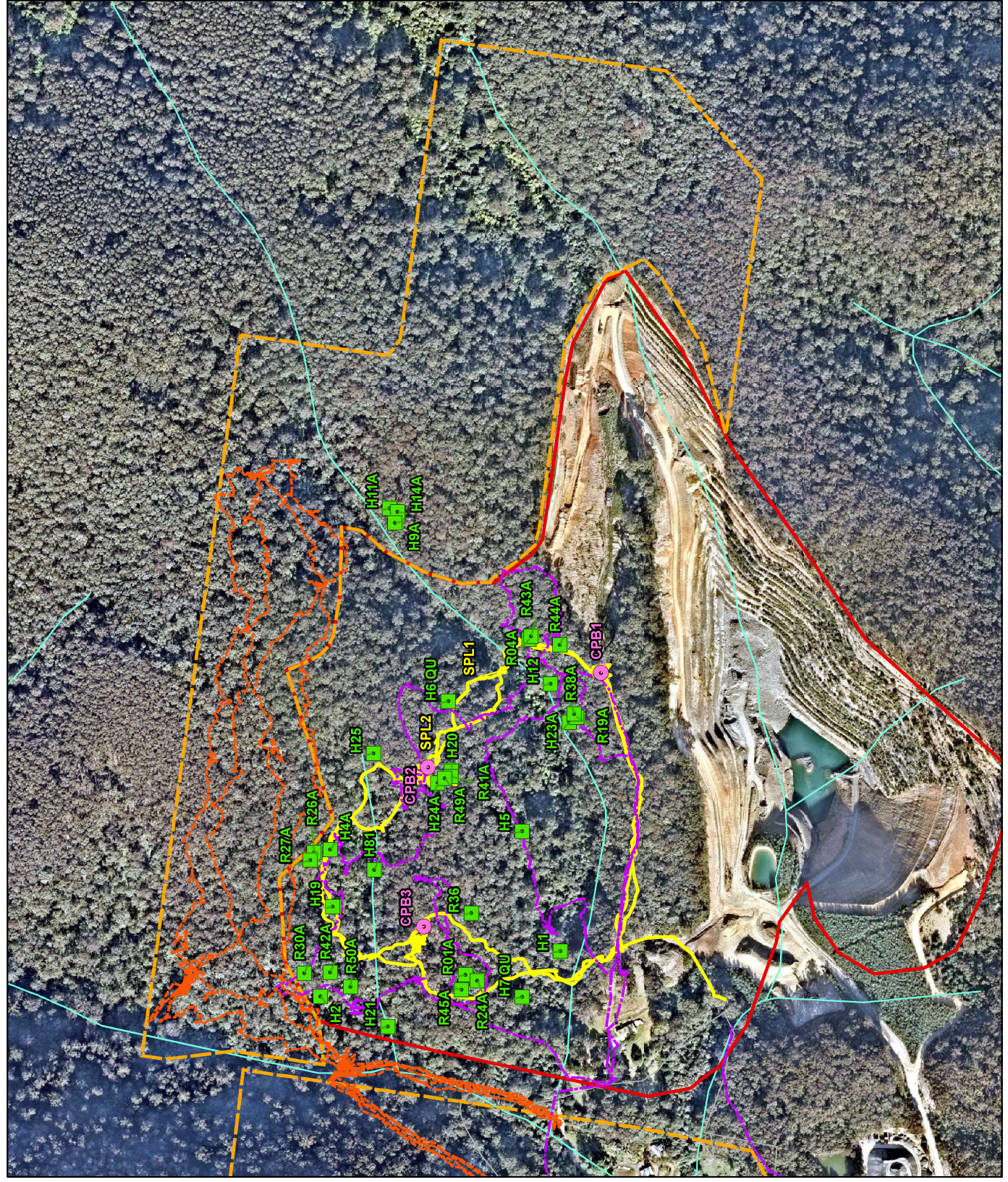
0 80 160
 Metres

North arrow pointing up.



Victoria Data: The State of Victoria does not warrant the accuracy or completeness of information in this publication and any person using or relying upon such information does so on the basis that the State of Victoria shall bear no responsibility or liability whatsoever for any errors, faults, defects or omissions in the information.

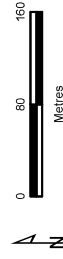
14246-Fm05_FaunaSurvey_MB_G20-19/04/2024_civil@ecolines



- Legend**
- Study Area
 - Proposed offset site
 - Call playback location
 - Camera location
 - Spotlighting transect
- Nest search transects**
- Survey date: 23/12/2020
 - Survey date: 14/01/2021



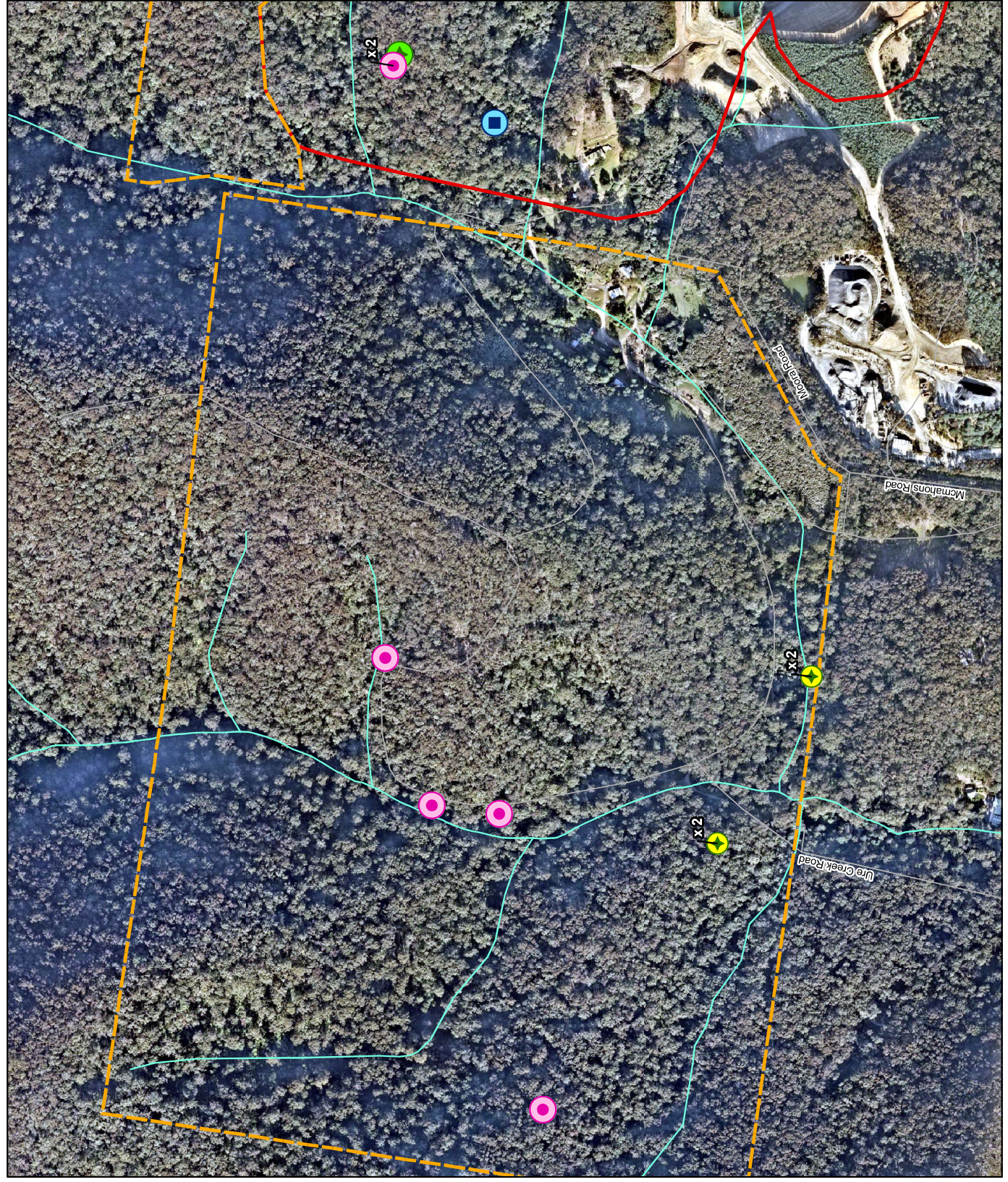
Figure 5b
Fauna survey locations
 Ecological Services: WA375,
 Yarra Valley Quarries,
 Launching Place



Map Scale: 1:6,000 @ A4
 Coordinate System: GDA2020 MGA Zone 55



Victoria Data: The State of Victoria does not warrant the accuracy or completeness of information in this publication and any person using or relying upon such information does so on the basis that the State of Victoria shall bear no responsibility or liability whatsoever for any errors, faults, defects or omissions in the information.
 14246_Fm05_FaunaSurvey_MB_G20.19/04/2024_civil@ecolines



- Legend**
- Study Area
 - Proposed offset site
 - Greater Glider
 - Lace Monitor
 - Powerful Owl (adult)
 - Powerful Owl (juvenile)



Figure 6
Threatened fauna species recorded
Ecological Services: WA375, Yarra Valley Quarries, Launching Place

0 100 200
 Metres

Map Scale: 1:8,200 @ A4
 Coordinate System: GDA2020 MGA Zone 55

ecology & heritage
 partners

Victoria Data: The State of Victoria does not warrant the accuracy or completeness of information in this publication and any person using or relying upon such information does so on the basis that the State of Victoria shall bear no responsibility or liability whatsoever for any errors, faults, defects or omissions in the information.

14.246 - Fig06 - ThrFaunaSpec_G20.19/04/2024.dvw@edg.com