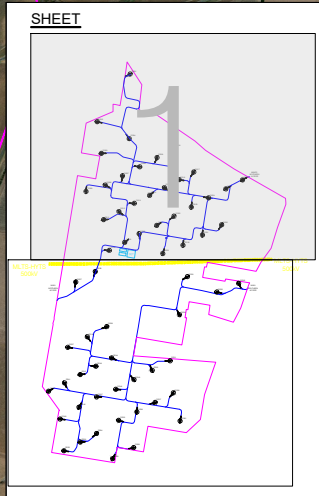




TURBINE ID	GDA94 - MGA ZONE 54 COORDINATES (m)	
	EASTING (X)	NORTHING (Y)
DG01	670.490	5.796.235
DG02	669.228	5.794.425
DG03	669.387	5.793.225
DG04	670.451	5.793.788
DG05	668.809	5.791.773
DG06	669.540	5.792.022
DG07	670.195	5.792.369
DG08	670.844	5.792.718
DG09	671.505	5.793.062
DG10	672.160	5.793.409
DG11	669.474	5.790.703
DG12	670.059	5.791.013
DG13	670.644	5.791.322
DG14	671.230	5.791.632
DG15	671.784	5.791.926
DG16	672.344	5.792.222
DG17	672.903	5.792.518
DG18	669.693	5.789.534
DG19	670.283	5.789.847
DG20	670.820	5.790.171
DG21	671.494	5.790.488
DG22	672.152	5.790.836
DG23	672.810	5.791.184
DG24	673.468	5.791.533
DG25	674.116	5.791.876
DG26	674.747	5.792.210
DG27	668.414	5.788.341
DG28	669.165	5.788.738
DG29	671.723	5.789.418
DG30	672.494	5.789.733
DG31	673.226	5.790.121
DG32	673.959	5.790.508
DG33	672.659	5.788.536
DG34	672.361	5.787.094
DG35	673.773	5.787.954
DG36	674.610	5.788.285
DG37	668.114	5.785.858
DG38	668.855	5.786.251
DG39	669.596	5.786.643
DG40	667.388	5.784.190
DG41	667.987	5.784.507
DG42	668.586	5.784.824
DG43	669.184	5.785.140
DG44	669.783	5.785.457
DG45	667.826	5.783.137
DG46	668.544	5.783.577
DG47	669.212	5.783.976
DG48	669.942	5.784.258
DG49	670.630	5.784.621
DG50	671.317	5.784.985
DG51	672.004	5.785.349
DG52	667.968	5.781.928
DG53	668.588	5.782.256
DG54	669.208	5.782.585
DG55	670.044	5.783.078
DG56	670.736	5.783.393
DG57	671.428	5.783.760
DG58	672.119	5.784.126
DG59	669.812	5.781.620
DG60	670.618	5.782.047
DG61	672.384	5.783.063

- LEGEND**
- WIND FARM BOUNDARY
 - PROPOSED ROAD
 - TRANSMISSION LINE 500 kV
 - SUBSTATION & CONTROL ROOM (81.486 m²), OFFICE (26.000 m²) AND CONCRETE BATCHING BOXES (26.000 m²)
 - WIND TURBINE & HARDSTAND AREA
- NOTES**
1. CAD FILE AND EXTERNAL REFERENCE FILES ARE IN GDA94 - MGA ZONE 54 COORDINATE SYSTEM.
 2. THE LOCATION OF WIND TURBINES, ASSOCIATED INFRASTRUCTURE AND ROAD ALIGNMENTS ARE INDICATIVE ONLY AND SUBJECT TO ADJUSTMENT THROUGH DETAILED DESIGN.



Ed.	Date	Design.	Pr.Eng.	Revis.	Appr.	Issued For	Ed.	Date	Design.	Pr.Eng.	Revis.	Appr.	Issued For
4	13/09/22	GPG	GCJL	AAC	AAC	FOR INFORMATION							
3	14/07/22	GPG	GCJL	AAC	AAC	FOR INFORMATION							
2	07/06/22	GPG	GCJL	AAC	AAC	FOR INFORMATION							
1	22/04/21	GPG	GCJL	AAC	AAC	FOR INFORMATION							

SCALE: 1:35.000

PROJECT: **DARLINGTON WIND FARM**

DRAWING TITLE: **INDICATIVE GENERAL LAYOUT WITH TOPOGRAPHY**

GPG: **31205100222**

SHEET **1** NEXT **2**

CUST. CODE:

IT.05093.ES-TI-FO.12-EN

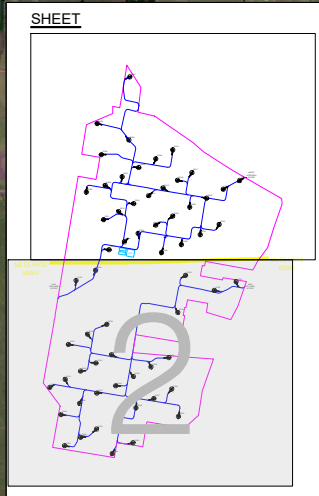
DIN-A3



TURBINE ID	GDA94 - MGA ZONE 54 COORDINATES (m)	
	EASTING (X)	NORTHING (Y)
DG01	670.490	5.796.235
DG02	669.228	5.794.425
DG03	669.387	5.793.225
DG04	670.451	5.793.788
DG05	668.809	5.791.773
DG06	669.540	5.792.022
DG07	670.195	5.792.369
DG08	670.844	5.792.718
DG09	671.505	5.793.062
DG10	672.160	5.793.409
DG11	669.474	5.790.703
DG12	670.059	5.791.013
DG13	670.644	5.791.322
DG14	671.230	5.791.632
DG15	671.784	5.791.926
DG16	672.344	5.792.222
DG17	672.903	5.792.518
DG18	669.693	5.789.534
DG19	670.283	5.789.847
DG20	670.820	5.790.171
DG21	671.494	5.790.488
DG22	672.152	5.790.836
DG23	672.810	5.791.184
DG24	673.468	5.791.533
DG25	674.116	5.791.876
DG26	674.747	5.792.210
DG27	668.414	5.788.341
DG28	669.165	5.788.738
DG29	671.723	5.789.418
DG30	672.494	5.789.733
DG31	673.226	5.790.121
DG32	673.959	5.790.508
DG33	672.659	5.788.536
DG34	672.361	5.787.094
DG35	673.773	5.787.954
DG36	674.610	5.788.285
DG37	668.114	5.785.858
DG38	668.855	5.786.251
DG39	669.596	5.786.643
DG40	667.388	5.784.190
DG41	667.987	5.784.507
DG42	668.586	5.784.824
DG43	669.184	5.785.140
DG44	669.783	5.785.457
DG45	667.826	5.783.137
DG46	668.544	5.783.577
DG47	669.212	5.783.976
DG48	669.942	5.784.258
DG49	670.630	5.784.621
DG50	671.317	5.784.985
DG51	672.004	5.785.349
DG52	667.968	5.781.928
DG53	668.588	5.782.256
DG54	669.208	5.782.585
DG55	670.044	5.783.078
DG56	670.736	5.783.393
DG57	671.428	5.783.760
DG58	672.119	5.784.126
DG59	669.812	5.781.620
DG60	670.618	5.782.047
DG61	672.384	5.783.063

- LEGEND**
- WIND FARM BOUNDARY
 - PROPOSED ROAD
 - TRANSMISSION LINE 500 kV
 - SUBSTATION & CONTROL ROOM (81.486 m²), OFFICE (26.000 m²) AND CONCRETE BATCHING BOXES (26.000 m²)
 - WIND TURBINE & HARDSTAND AREA

- NOTES**
1. CAD FILE AND EXTERNAL REFERENCE FILES ARE IN GDA94 - MGA ZONE 54 COORDINATE SYSTEM.
 2. THE LOCATION OF WIND TURBINES, ASSOCIATED INFRASTRUCTURE AND ROAD ALIGNMENTS ARE INDICATIVE ONLY AND SUBJECT TO ADJUSTMENT THROUGH DETAILED DESIGN.



Ed.	Date	Design.	Pr.Eng.	Revis.	Appr.	Issued For	Ed.	Date	Design.	Pr.Eng.	Revis.	Appr.	Issued For
4	13/09/22	GPG	GCJL	AAC	AAC	FOR INFORMATION							
3	14/07/22	GPG	GCJL	AAC	AAC	FOR INFORMATION							
2	07/06/22	GPG	GCJL	AAC	AAC	FOR INFORMATION							
1	22/04/21	GPG	GCJL	AAC	AAC	FOR INFORMATION							

SCALE: 1:35.000

PROJECT: **DARLINGTON WIND FARM**

DRAWING TITLE: **INDICATIVE GENERAL LAYOUT WITH TOPOGRAPHY**

GPG: **31205100222**

SHEET **2** NEXT **-**

CUST. CODE:

IT.05093.ES-TI-FO.12-EN

DIN-A3