



XURBAN

Urban Design
Landscape Architecture
Visual Assessment

Suite 6, 60 Little Latrobe Street,
Melbourne Victoria 3000

P: 61 3 9642 8040
E: allan.wyatt@xurban.com.au

Layout

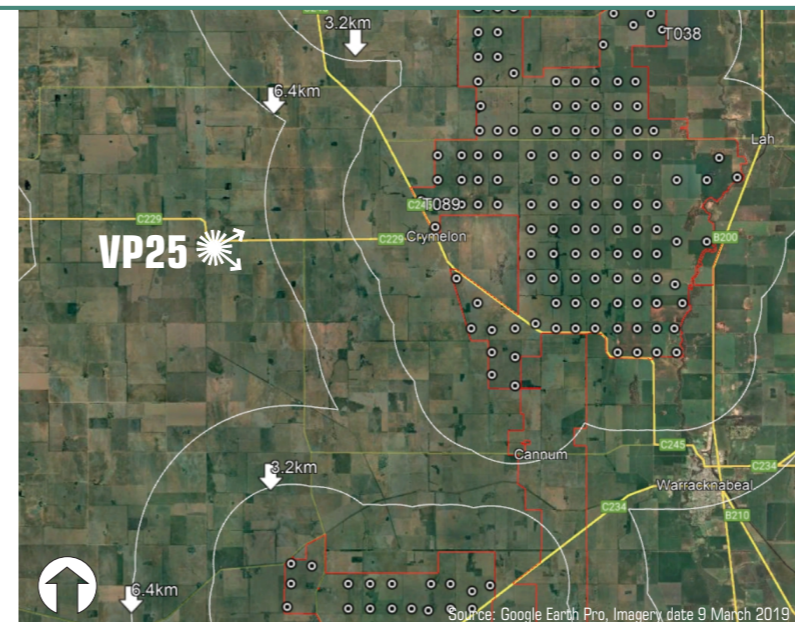
Wind turbine layout - V08-01

Photography data

Photography date: 13 May 2022 at 9:58AM
Camera: Nikon D5
Lens: 60mm

VP 25

Location data reference: Grid Datum: GDA94 Zone 54
Latitude: -36.162998°
Longitude: 142.170312°
Ground level: 105m
Distance to nearest wind turbine: (T089) 8.8km
Bearing 80° approx



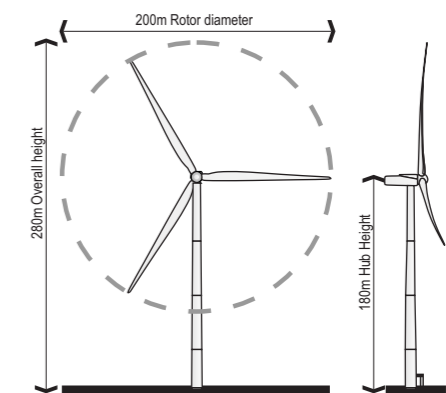
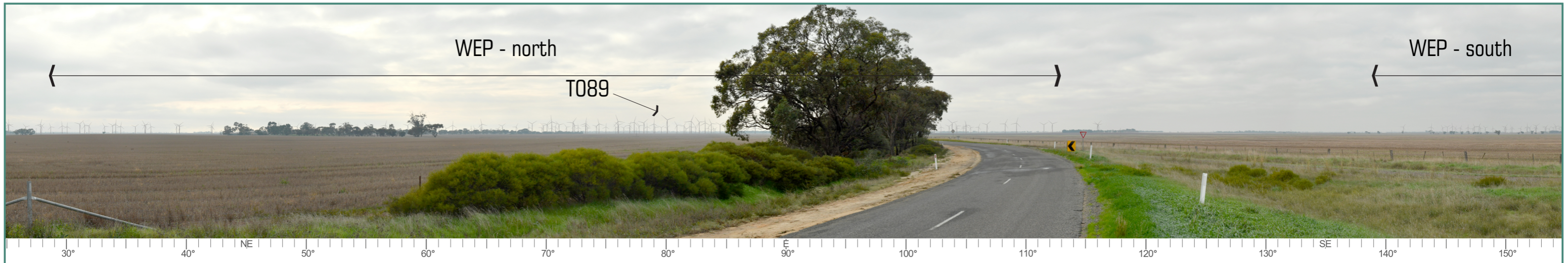
Project:
Warracknabeal Energy Park

Client:
Warracknabeal Energy Park Pty Ltd

Location:
**Jeparit-Warracknabeal Road
West of Warracknabeal**

Existing view - Panorama 130° FOV

Date: 19 May 2022 Project No: 15187
Drawing: **Viewpoint 25** Sheet: **25.01**



XURBAN

Urban Design
Landscape Architecture
Visual Assessment

Suite 6, 60 Little Latrobe Street,
Melbourne Victoria 3000

P: 61 3 9642 8040
E: allan.wyatt@xurban.com.au

Layout

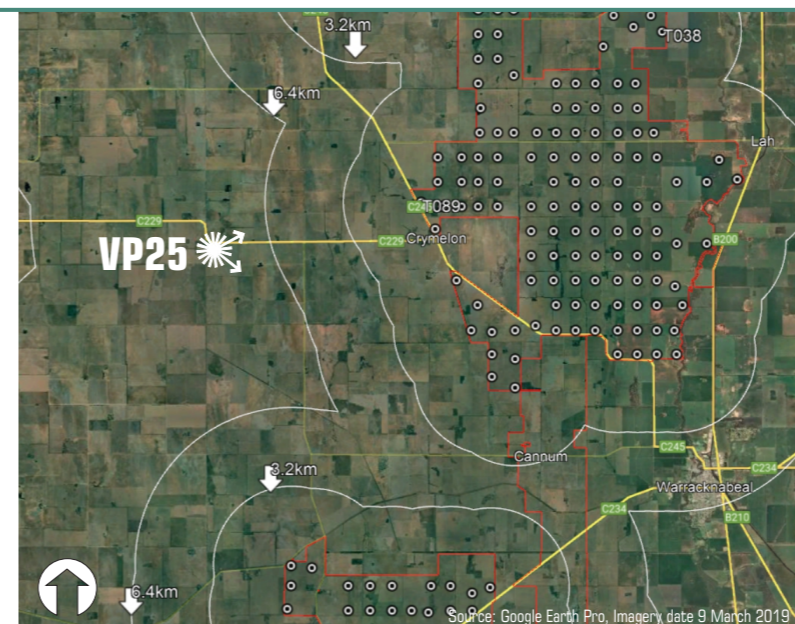
Wind turbine layout - V08-01

Photography data

Photography date: 13 May 2022 at 9:58AM
Camera: Nikon D5
Lens: 60mm

VP 25

Location data reference: Grid Datum: GDA94 Zone 54
Latitude: -36.162998°
Longitude: 142.170312°
Ground level: 105m
Distance to nearest wind turbine: (T089) 8.8km
Bearing 80° approx



Project:
Warracknabeal Energy Park

Client:
Warracknabeal Energy Park Pty Ltd

Location:
**Jeparit-Warracknabeal Road
West of Warracknabeal**

Photomontage - Panorama 130° FOV

Date: 19 May 2022 Project No: 15187
Drawing: **Viewpoint 25** Sheet: **25.02**