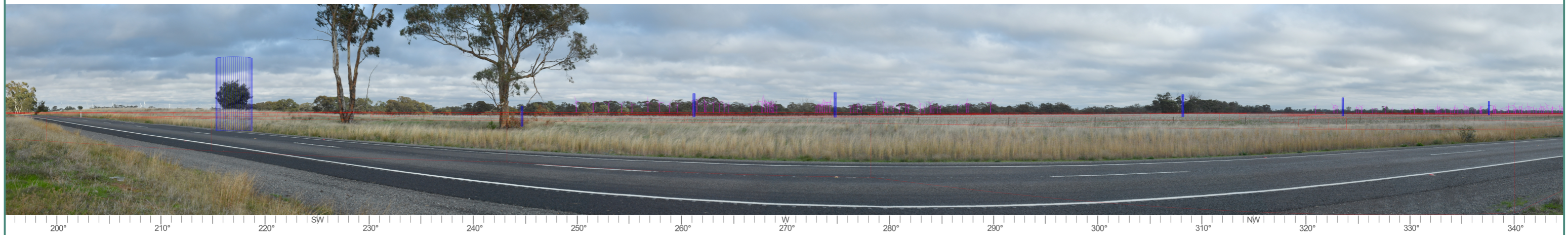




Numbered turbines



Wireframe model

**XURBAN**

Urban Design  
Landscape Architecture  
Visual Assessment

Suite 6, 60 Little Latrobe Street,  
Melbourne Victoria 3000

P: 61 3 9642 8040  
E: allan.wyatt@xurban.com.au

**Layout**

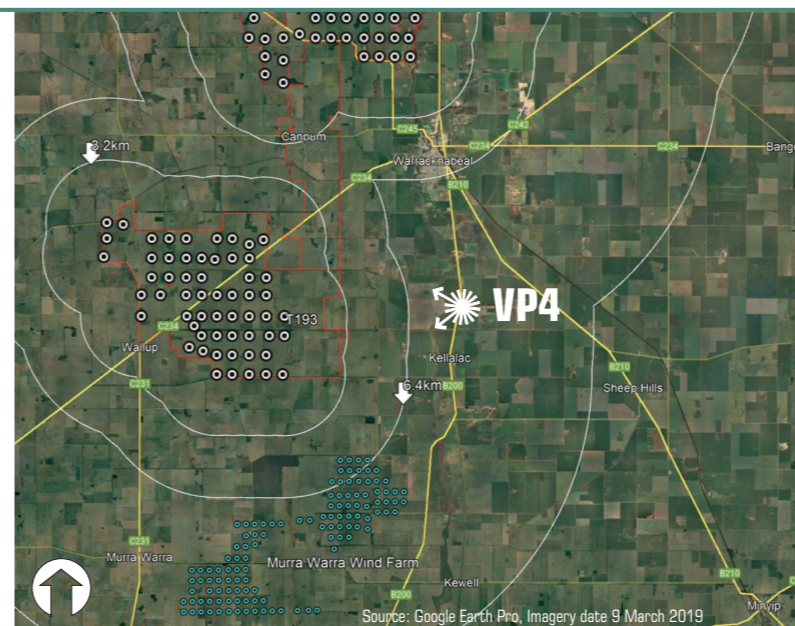
Wind turbine layout - V08-01

**Photography data**

Photography date: 12 May 2022 at 10.06AM  
Camera: Nikon D5  
Lens: 60mm

**VP 4**

Location data reference: Grid Datum: GDA94 Zone 54  
Latitude: -36.320702°  
Longitude: 142.410545°  
Ground level: 121m  
Distance to nearest wind turbine: (T193) 9km  
Bearing 267° approx



Project:  
**Warracknabeal Energy Park**

Client:  
Warracknabeal Energy Park Pty Ltd

Location:  
**Henty Highway /  
Warracknabeal Aerodrome**

**Wireframe & numbered turbines**

Date: 19 May 2022 Project No: 15187

Drawing: **Viewpoint 4** Sheet: **4.04**