

**LEGEND**

Indicative onshore pipeline route	Boat ramp	<b>Planning scheme overlay</b>	RXO - Road Closure Overlay
Indicative shore crossing pipeline route	Railway station	BMO - Bushfire Management Overlay	SBO - Special Building Overlay
Indicative subsea pipeline route	Railway line	DCPO - Development Contributions Plan Overlay	SCO - Specific Controls Overlay
Indicative electricity cable (option 1a underground)	Arterial road	DDO - Design and Development Overlay	SLO - Significant Landscape Overlay
Indicative electricity cable (option 1b underground)	Sub-arterial road	DPO - Development Plan Overlay	SMO - Salinity Management Overlay
Indicative electricity cable (option 2 overhead)	Watercourse	EAO - Environmental Audit Overlay	SRO - State Resource Overlay
Indicative electricity cable shore crossing	Waterbody	ESO - Environmental Significance Overlay	VPO - Vegetation Protection Overlay
Indicative subsea electricity cable	Existing gas pipeline	FO - Floodway Overlay	
Indicative powerline	Avalon airport land	HO - Heritage Overlay	
Gas Receiving Station site	Cadastral boundaries	IPO - Incorporated Plan Overlay	
Substation	Local government area	PAO - Public Acquisition Overlay	
Indicative FSRU location		PO - Parking Overlay	
Marine berth area		RO - Restructure Overlay	

MAP SHEET 1: Offshore

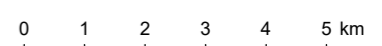
MAP SHEET 2:  
Onshore Pipeline

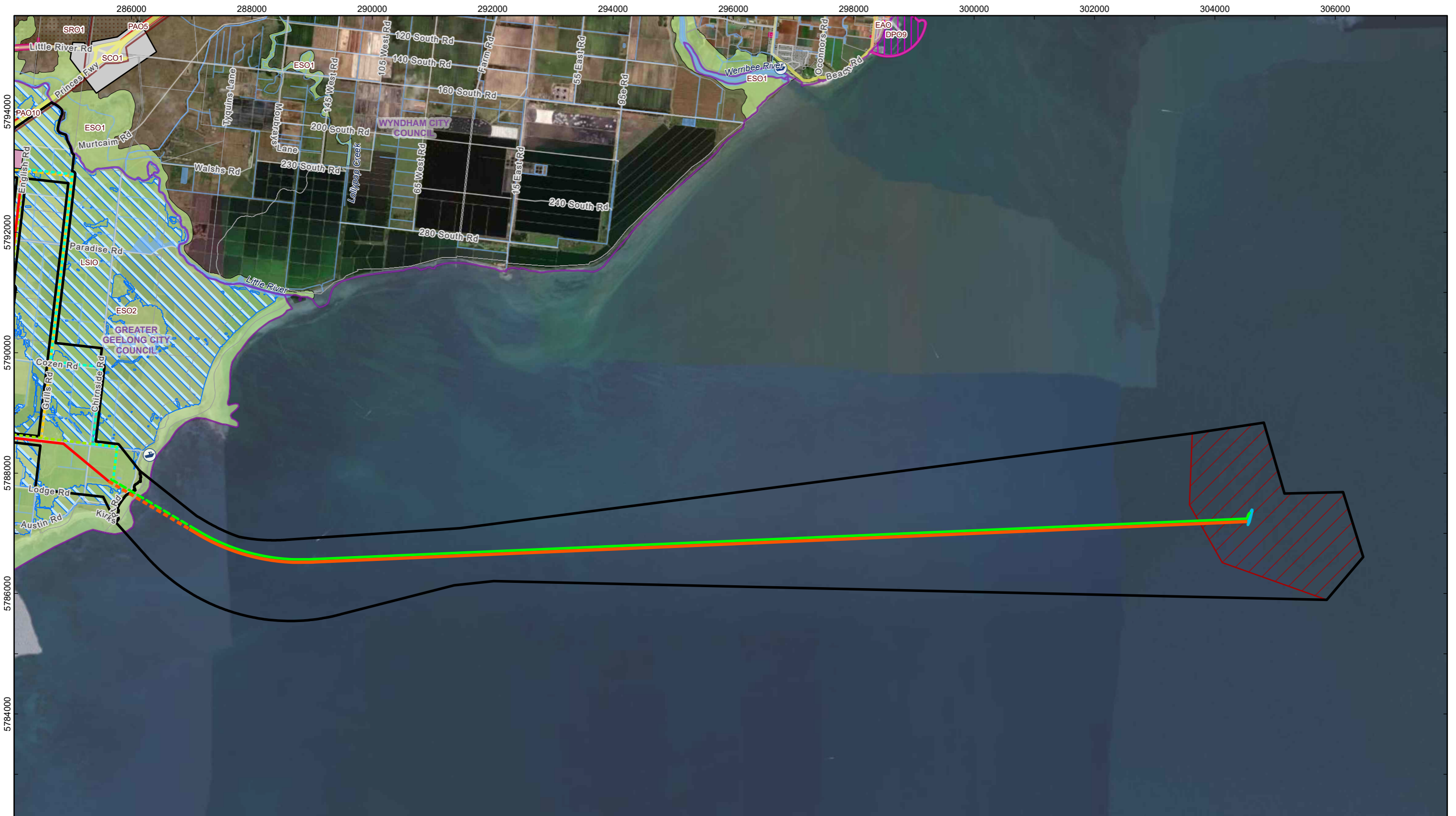
**PLANNING OVERLAYS**



Disclaimer: Vopak makes no warranty in relation to the accuracy, reliability, completeness or suitability of the data and does not accept liability for any loss, damage or costs, including consequential damage, in relation to any use of the data in this map.


PROJECT <b>Victoria Energy Terminal</b>		
DATE 30/11/2022	STATUS DRAFT	PRODUCED MVC
SCALE 1:125,000 at A3	DATUM GDA2020 MGA Zone 55	APPROVED MDG
FILE VET-EES-06-C Planning Overlays	REV <b>B</b>	





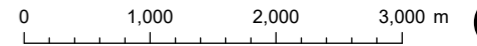

- |  |  |  |   |
|--|--|--|---|
| <ul style="list-style-type: none"> <li><span style="color: red;">—</span> Indicative onshore pipeline route</li> <li><span style="color: orange;">- - -</span> Indicative shore crossing pipeline route</li> <li><span style="color: orange;">—</span> Indicative subsea pipeline route</li> <li><span style="color: green;">- - -</span> Indicative electricity cable (option 1a underground)</li> <li><span style="color: yellow;">- - -</span> Indicative electricity cable (option 1b underground)</li> <li><span style="color: green;">- - -</span> Indicative electricity cable (option 2 overhead)</li> <li><span style="color: green;">- - -</span> Indicative electricity cable shore crossing</li> </ul> | <ul style="list-style-type: none"> <li><span style="color: green;">—</span> Indicative subsea electricity cable</li> <li><span style="color: pink;">■</span> Indicative Gas Receiving Station site</li> <li><span style="color: blue;">■</span> Indicative FSRU location</li> <li><span style="color: red;">□</span> Marine berth area</li> <li><span style="color: blue;">⊙</span> Boat ramp</li> <li><span style="color: yellow;">—</span> Arterial road</li> <li><span style="color: lightyellow;">—</span> Sub-arterial road</li> <li><span style="color: grey;">—</span> Local road</li> <li><span style="color: brown;">—</span> Existing gas pipeline</li> <li><span style="color: blue;">—</span> Watercourse</li> <li><span style="color: lightblue;">—</span> Waterbody</li> </ul> | <ul style="list-style-type: none"> <li><span style="border: 1px solid black;">□</span> Cadastral boundaries</li> <li><span style="border: 1px solid purple;">□</span> Local government area</li> <li><b>Planning scheme overlay</b></li> <li><span style="border: 1px dashed pink;">□</span> DDO - Design and Development Overlay</li> <li><span style="border: 1px dashed purple;">□</span> DPO - Development Plan Overlay</li> <li><span style="border: 1px solid orange;">□</span> EAO - Environmental Audit Overlay</li> <li><span style="border: 1px solid green;">□</span> ESO - Environmental Significance Overlay</li> <li><span style="border: 1px solid pink;">□</span> HO - Heritage Overlay</li> <li><span style="border: 1px solid blue;">□</span> LSIO - Land Subject to Inundation Overlay</li> </ul> | <ul style="list-style-type: none"> <li><span style="background-color: yellow;">□</span> PAO - Public Acquisition Overlay</li> <li><span style="background-color: lightblue;">□</span> SBO - Special Building Overlay</li> <li><span style="background-color: grey;">□</span> SCO - Specific Controls Overlay</li> <li><span style="background-color: lightgreen;">□</span> SLO - Significant Landscape Overlay</li> <li><span style="background-color: lightgrey;">□</span> SRO - State Resource Overlay</li> </ul> |
|--|--|--|---|

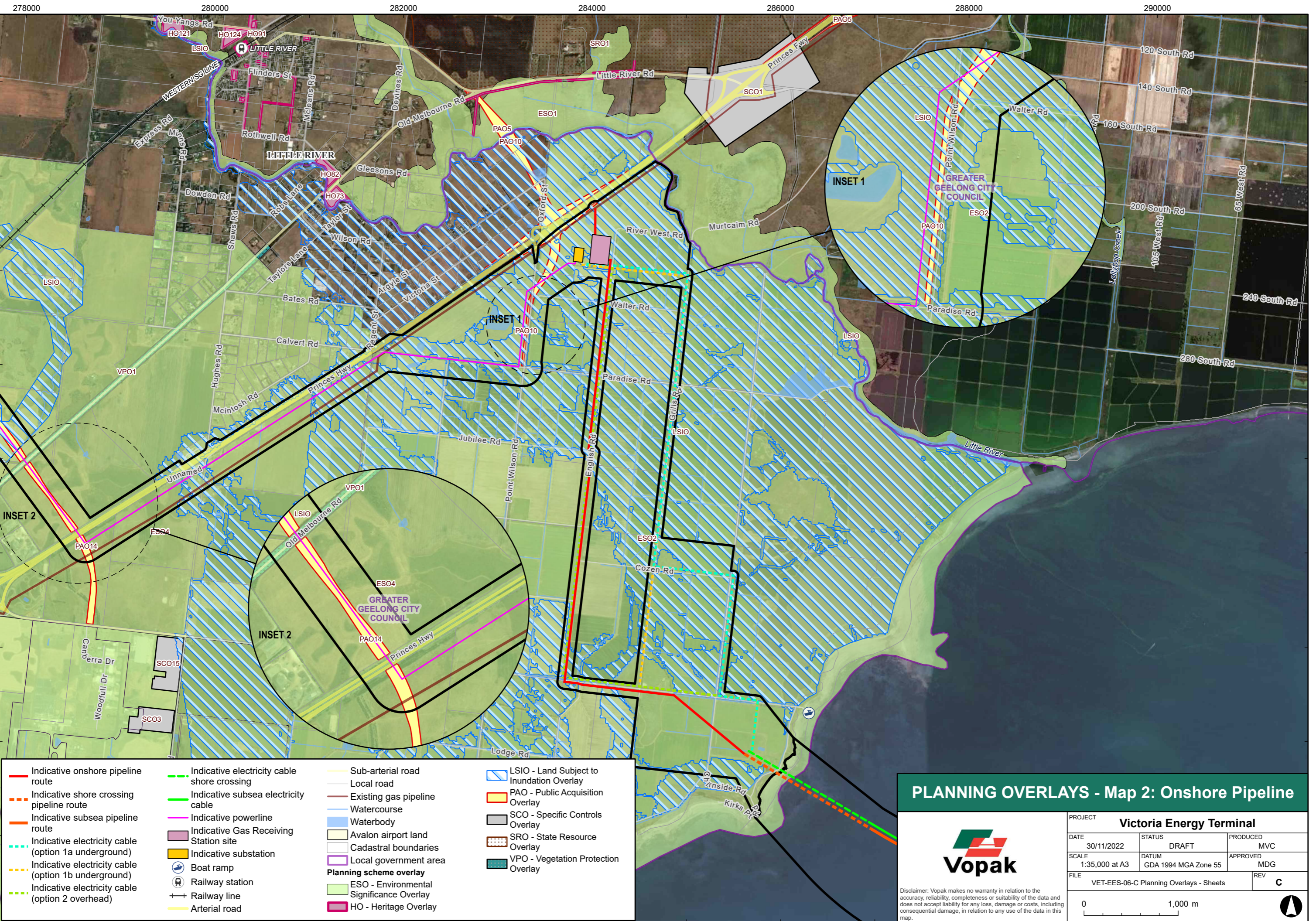
## PLANNING OVERLAYS - Map 1: Offshore



PROJECT <b>Victoria Energy Terminal</b>		
DATE 30/11/2022	STATUS DRAFT	PRODUCED MVC
SCALE 1:60,000 at A3	DATUM GDA 1994 MGA Zone 55	APPROVED MDG
FILE VET-EES-06-C Planning Overlays - Sheets		REV <b>C</b>

Disclaimer: Vopak makes no warranty in relation to the accuracy, reliability, completeness or suitability of the data and does not accept liability for any loss, damage or costs, including consequential damage, in relation to any use of the data in this map.



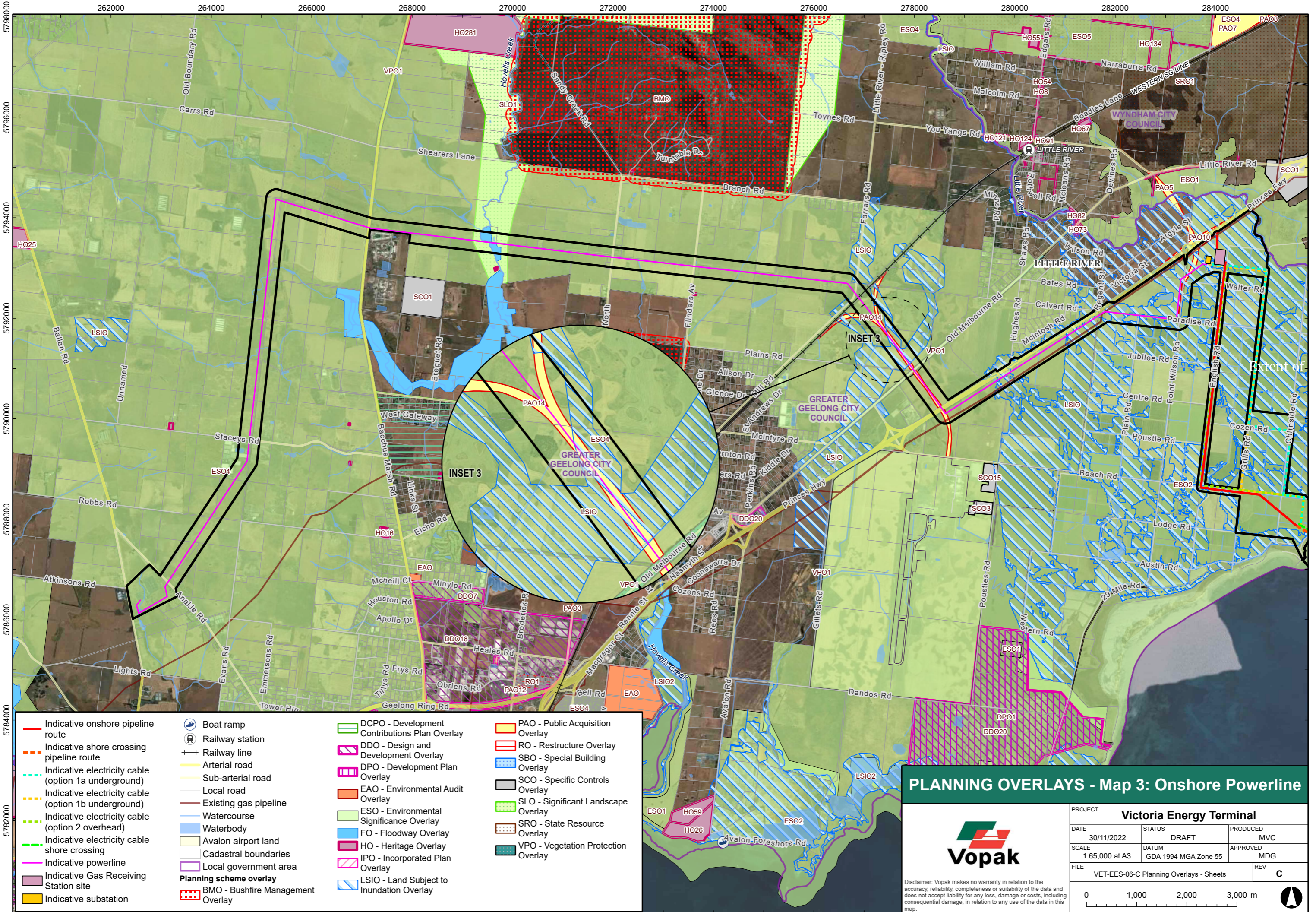
Indicative onshore pipeline route	Indicative electricity cable shore crossing	Sub-arterial road	LSIO - Land Subject to Inundation Overlay
Indicative shore crossing pipeline route	Indicative subsea electricity cable	Local road	PAO - Public Acquisition Overlay
Indicative subsea pipeline route	Indicative powerline	Watercourse	SCO - Specific Controls Overlay
Indicative electricity cable (option 1a underground)	Indicative Gas Receiving Station site	Waterbody	SRO - State Resource Overlay
Indicative electricity cable (option 1b underground)	Indicative substation	Avalon airport land	VPO - Vegetation Protection Overlay
Indicative electricity cable (option 2 overhead)	Boat ramp	Cadastral boundaries	
	Railway station	Local government area	
	Railway line	<b>Planning scheme overlay</b>	
	Arterial road	ESO - Environmental Significance Overlay	
		HO - Heritage Overlay	

## PLANNING OVERLAYS - Map 2: Onshore Pipeline

<b>PROJECT</b> Victoria Energy Terminal		
DATE	STATUS	PRODUCED
30/11/2022	DRAFT	MVC
SCALE	DATUM	APPROVED
1:35,000 at A3	GDA 1994 MGA Zone 55	MDG
FILE	REV	
VET-EES-06-C Planning Overlays - Sheets	C	

Disclaimer: Vopak makes no warranty in relation to the accuracy, reliability, completeness or suitability of the data and does not accept liability for any loss, damage or costs, including consequential damage, in relation to any use of the data in this map.

0 1,000 m



- Indicative onshore pipeline route
- Indicative shore crossing pipeline route
- Indicative electricity cable (option 1a underground)
- Indicative electricity cable (option 1b underground)
- Indicative electricity cable (option 2 overhead)
- Indicative electricity cable shore crossing
- Indicative powerline
- Indicative Gas Receiving Station site
- Indicative substation
- Boat ramp
- Railway station
- Railway line
- Arterial road
- Sub-arterial road
- Local road
- Existing gas pipeline
- Watercourse
- Waterbody
- Avalon airport land
- Cadastral boundaries
- Local government area
- BMO - Bushfire Management Overlay
- DCPO - Development Contributions Plan Overlay
- DDO - Design and Development Overlay
- DPO - Development Plan Overlay
- EAO - Environmental Audit Overlay
- ESO - Environmental Significance Overlay
- FO - Floodway Overlay
- HO - Heritage Overlay
- IPO - Incorporated Plan Overlay
- LSIO - Land Subject to Inundation Overlay
- PAO - Public Acquisition Overlay
- RO - Restructure Overlay
- SBO - Special Building Overlay
- SCO - Specific Controls Overlay
- SLO - Significant Landscape Overlay
- SRO - State Resource Overlay
- VPO - Vegetation Protection Overlay

## PLANNING OVERLAYS - Map 3: Onshore Powerline

**Vopak**

Disclaimer: Vopak makes no warranty in relation to the accuracy, reliability, completeness or suitability of the data and does not accept liability for any loss, damage or costs, including consequential damage, in relation to any use of the data in this map.

PROJECT		
<b>Victoria Energy Terminal</b>		
DATE	STATUS	PRODUCED
30/11/2022	DRAFT	MVC
SCALE	DATUM	APPROVED
1:65,000 at A3	GDA 1994 MGA Zone 55	MDG
FILE	REV	
VET-EES-06-C Planning Overlays - Sheets	<b>C</b>	

0      1,000      2,000      3,000 m