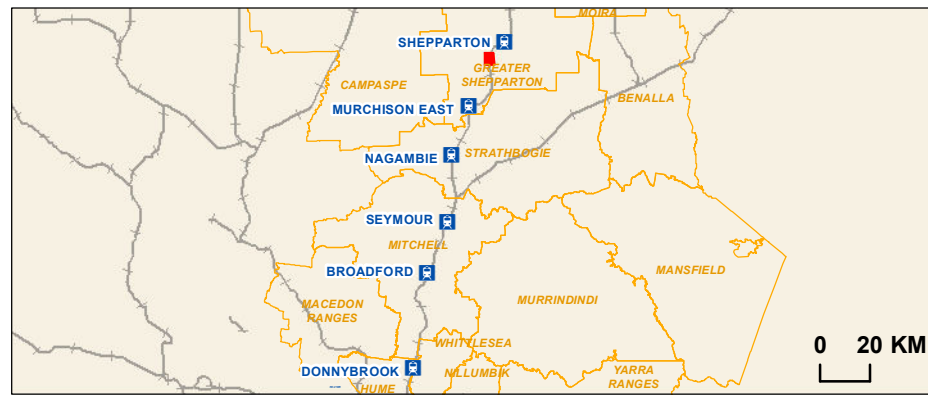


Map 61 of 69

- Rail station
- Railway
- LGA
- Cadastre
- GC135 Project Land
- BMO-Bushfire Management Overlay
- LSIO-Land Subject to Inundation Overlay
- PAO-Public Acquisition Overlay

Data Sources:
 AJM 2019
 Advisian 2018
 Vicmap 2018
 Basemap: ESRI 2018



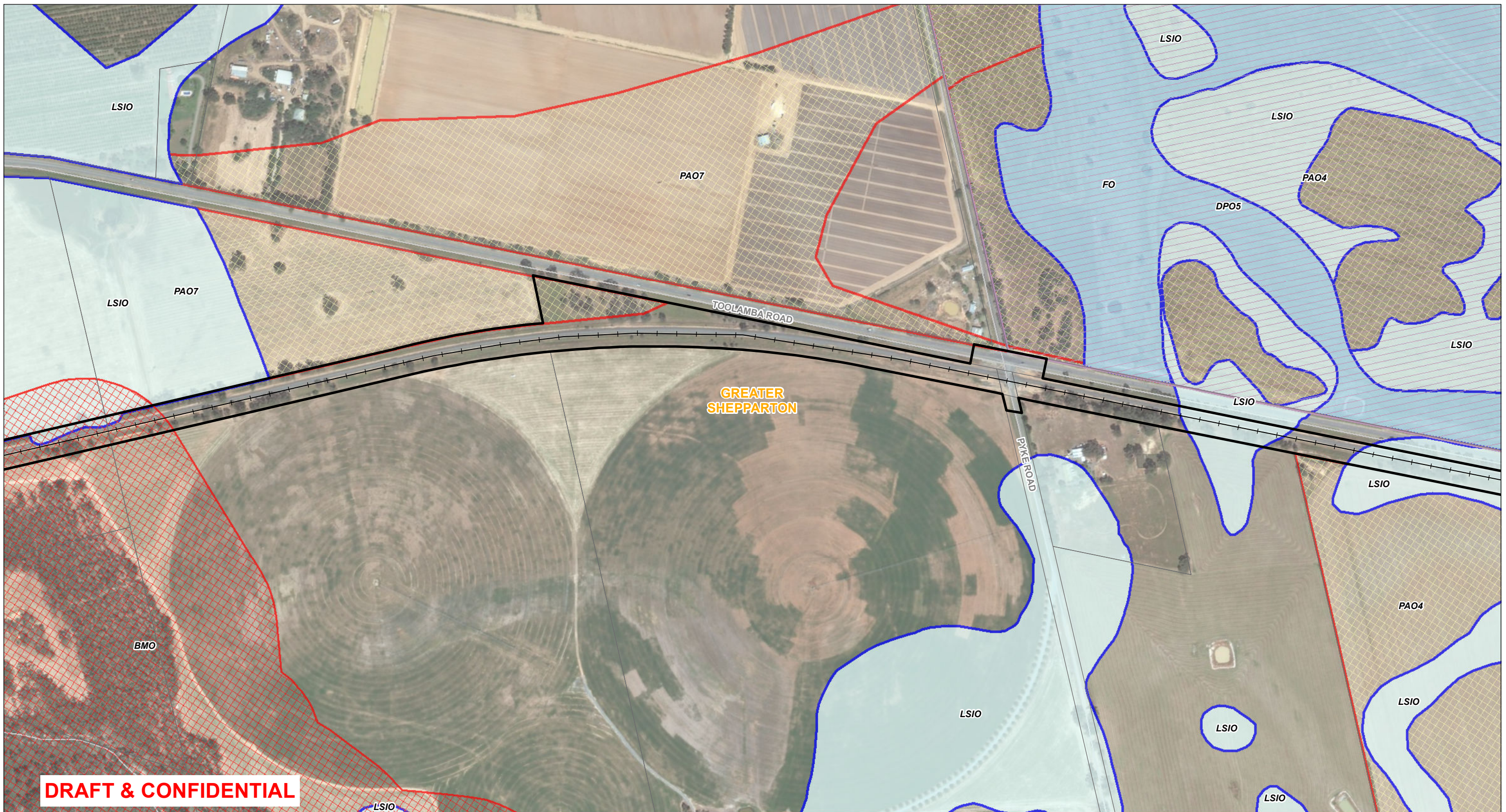
Joint Venture

Regional Rail Revival
North-East & Shepparton


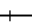








Planning Overlays

Drawing Number:		Revision:	
NES-AJM-PWD-PWD-MAP-XLP-VIC-0419118		A.1	
Drawn By:	Approved By:	Date:	Map Size:
R.Lancaster	G. Whelan	12/09/2019	A3

Coordinate System: GDA 1994 MGA Zone 55

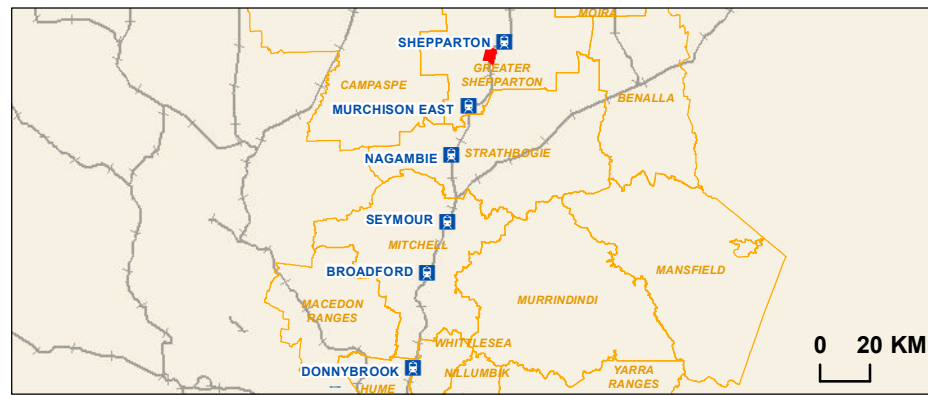


DRAFT & CONFIDENTIAL

-  Rail station
-  Railway
-  LGA
-  Cadastre
-  GC135 Project Land
-  DPO-Development Plan Overlay
-  BMO-Bushfire Management Overlay
-  FO-Floodway Overlay
-  LSIO-Land Subject to Inundation Overlay
-  PAO-Public Acquisition Overlay

Map 62 of 69

Data Sources:
 AJM 2019
 Advisian 2018
 Vicmap 2018
 Basemap: ESRI 2018

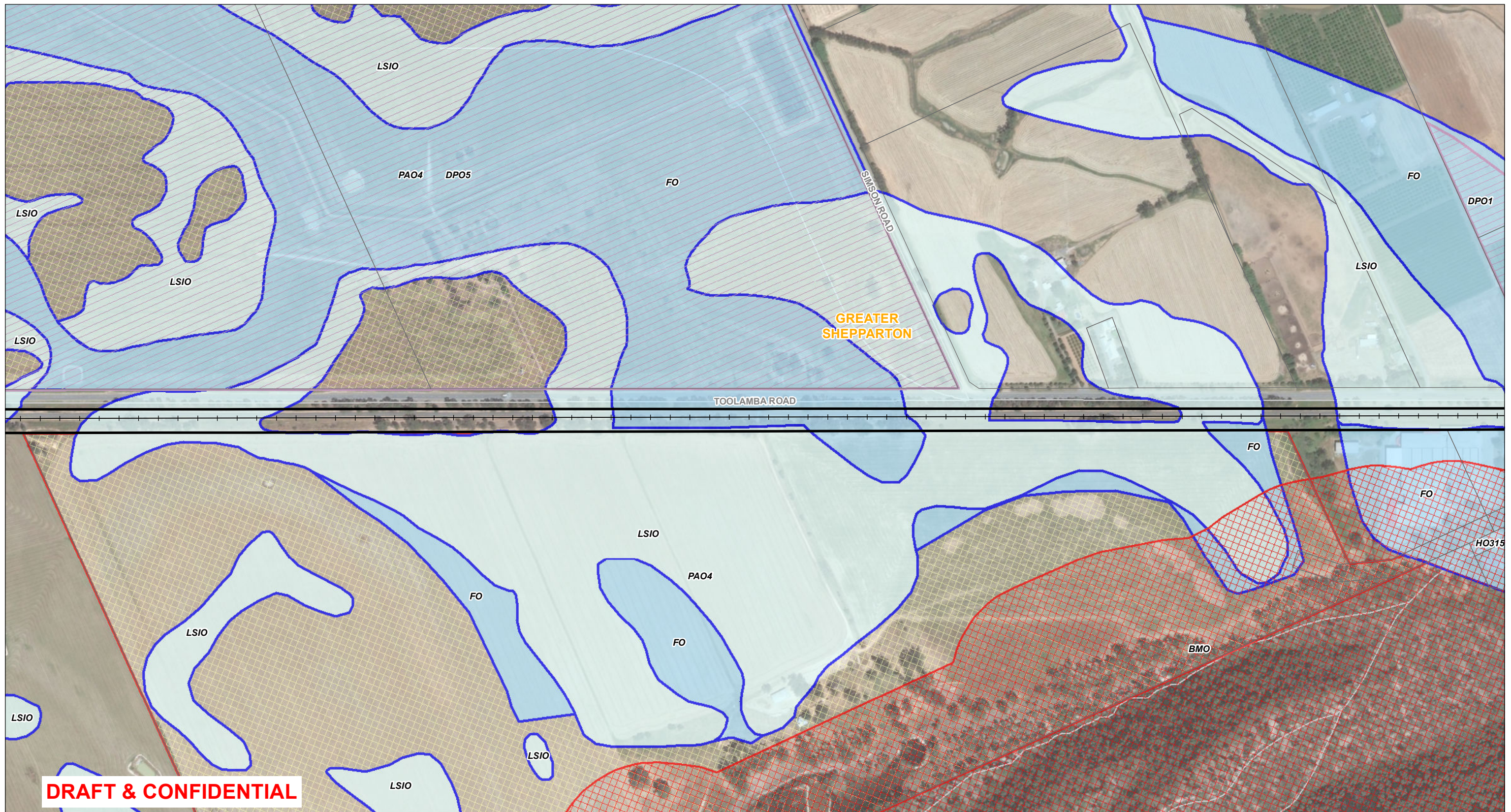


Regional Rail Revival
North-East & Shepparton

Planning Overlays

Drawing Number:		Revision:	
NES-AJM-PWD-PWD-MAP-XLP-VIC-0419118		A.1	
Drawn By:	Approved By:	Date:	Map Size:
R.Lancaster	G. Whelan	12/09/2019	A3

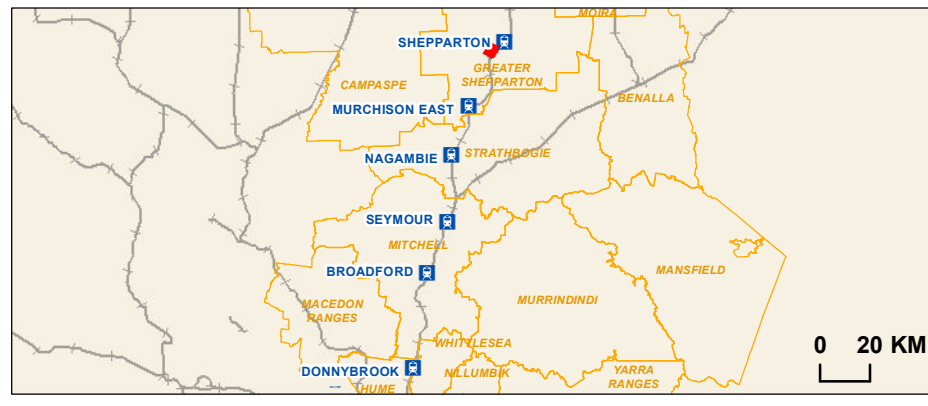
0 100 200
 Metres
 Coordinate System: GDA 1994 MGA Zone 55



- Rail station
- Railway
- LGA
- Cadastre
- GC135 Project Land
- DPO-Development Plan Overlay
- HO-Heritage Overlay
- BMO-Bushfire Management Overlay
- FO-Floodway Overlay
- LSIO-Land Subject to Inundation Overlay
- PAO-Public Acquisition Overlay

Map 63 of 69

Data Sources:
 AJM 2019
 Advisian 2018
 Vicmap 2018
 Basemap: ESRI 2018

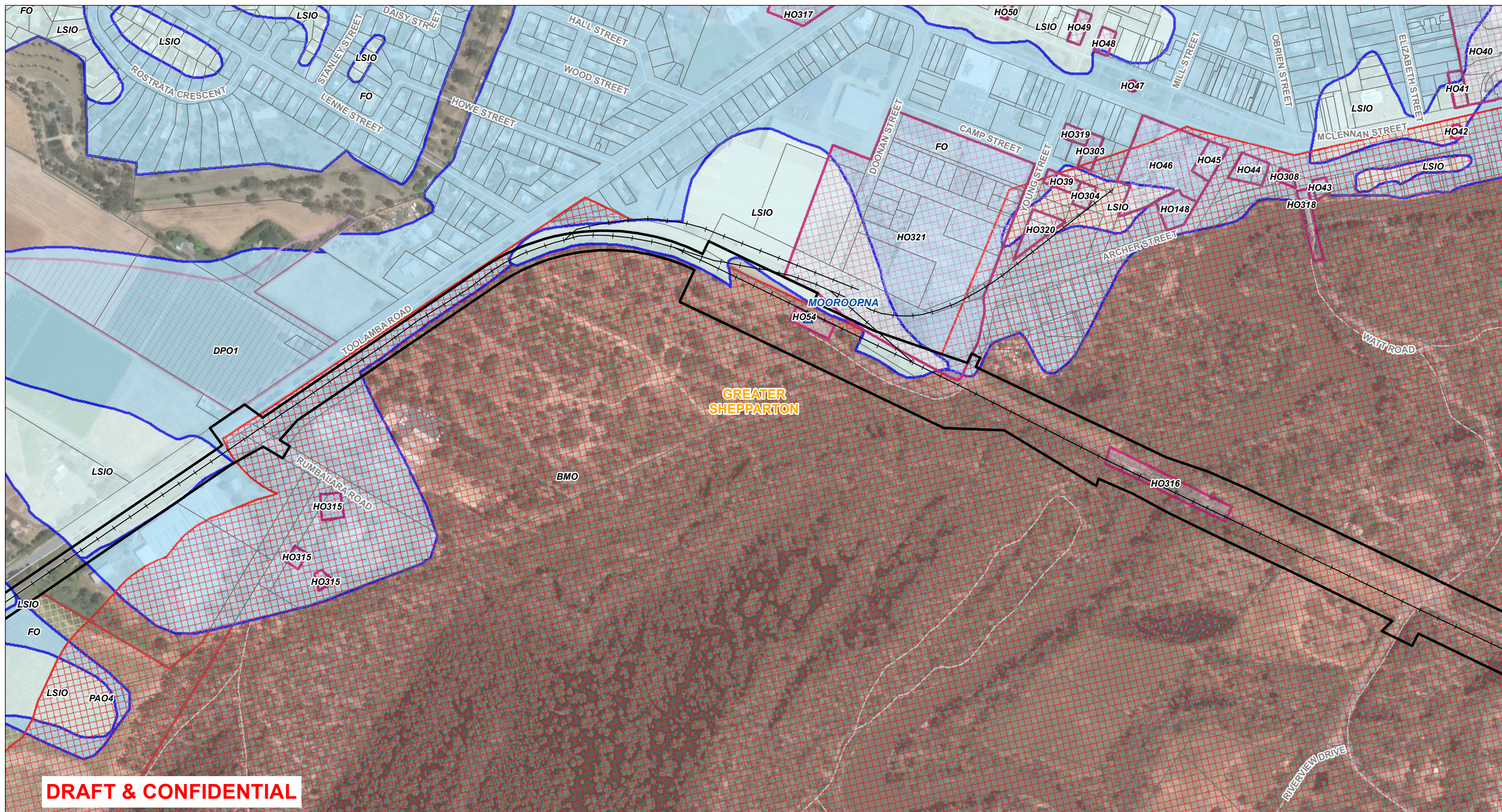


Regional Rail Revival
North-East & Shepparton

Planning Overlays

Drawing Number: NES-AJM-PWD-PWD-MAP-XLP-VIC-0419118	Revision: A.1
Drawn By: R.Lancaster	Approved By: G. Whelan
Date: 12/09/2019	Map Size: A3

0 100 200
 Metres
 Coordinate System: GDA 1994 MGA Zone 55

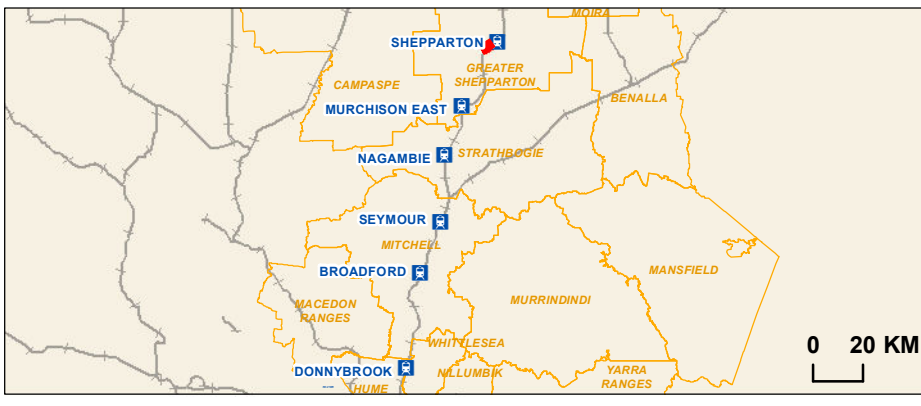


DRAFT & CONFIDENTIAL

- Rail station
- Railway
- LGA
- Cadastre
- GC135 Project Land
- DPO-Development Plan Overlay
- HO-Heritage Overlay
- BMO-Bushfire Management Overlay
- FO-Floodway Overlay
- LSIO-Land Subject to Inundation Overlay
- PAO-Public Acquisition Overlay

Map 64 of 69

Data Sources:
 AJM 2019
 Advisian 2018
 Vicmap 2018
 Basemap: ESRI 2018



Joint Venture MOTT MACDONALD

Regional Rail Revival
North-East & Shepparton

Planning Overlays

Drawing Number:		Revision:	
NES-AJM-PWD-PWD-MAP-XLP-VIC-0419118		A.1	
Drawn By:	Approved By:	Date:	Map Size:
R.Lancaster	G. Whelan	12/09/2019	A3

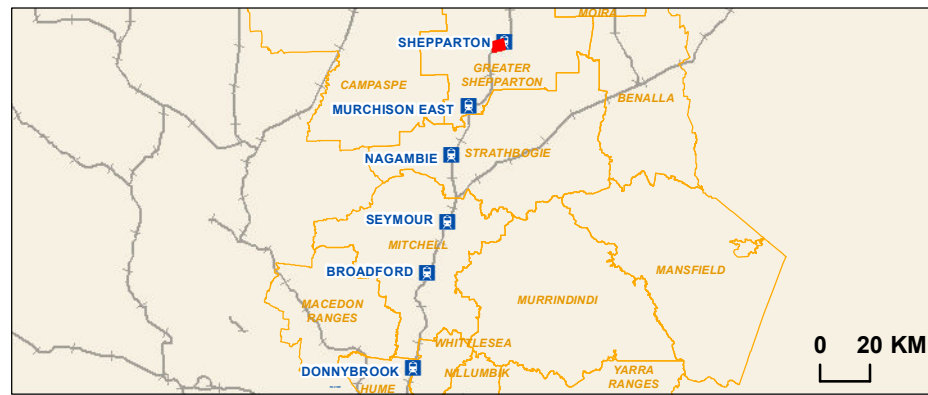
Coordinate System: GDA 1994 MGA Zone 55



Map 65 of 69

- Rail station
- Railway
- LGA
- Cadastre
- GC135 Project Land
- DPO-Development Plan Overlay
- HO-Heritage Overlay
- BMO-Bushfire Management Overlay
- FO-Floodway Overlay
- LSIO-Land Subject to Inundation Overlay

Data Sources:
 AJM 2019
 Advisian 2018
 Vicmap 2018
 Basemap: ESRI 2018



Regional Rail Revival
North-East & Shepparton

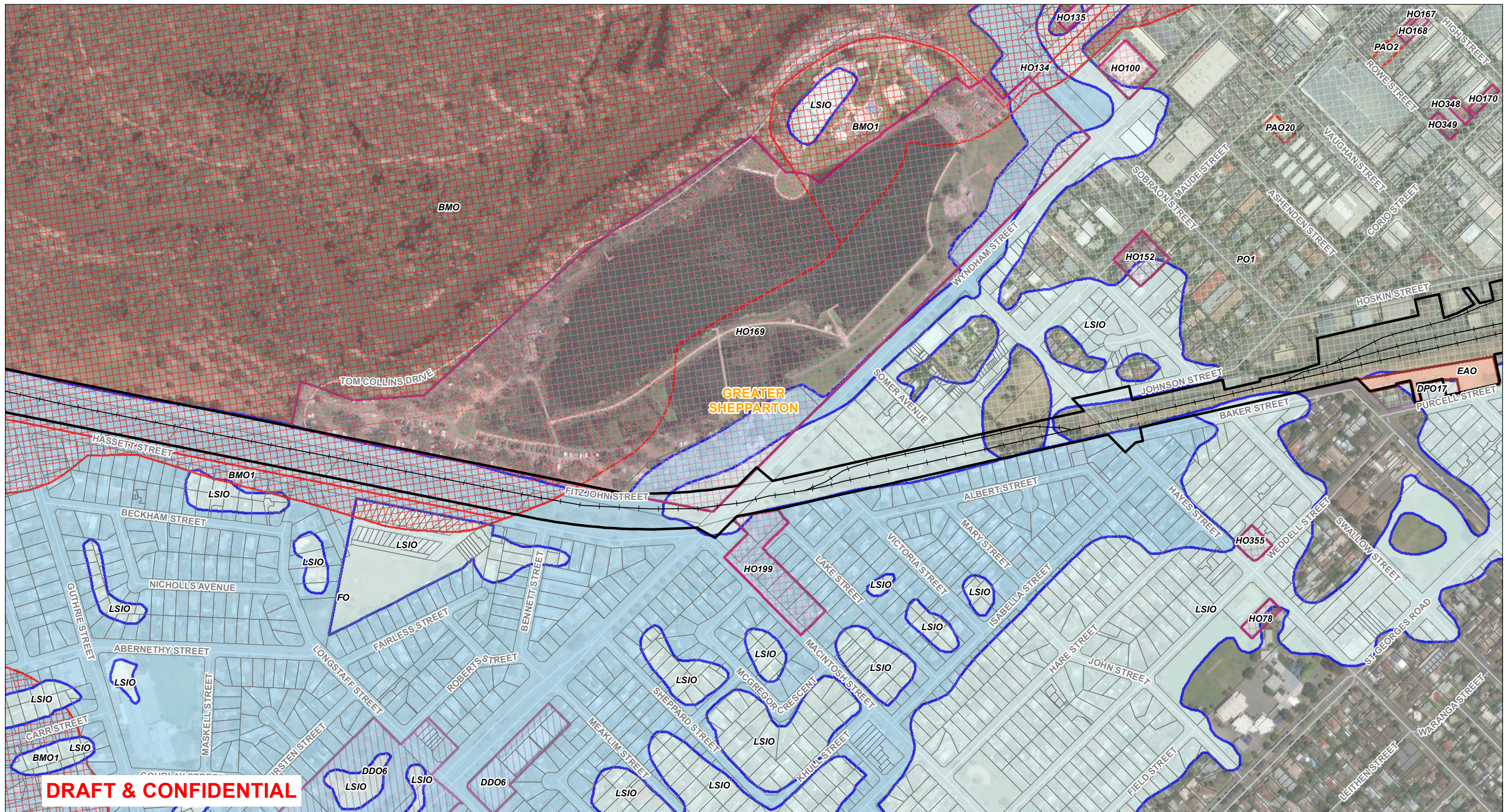
Planning Overlays

Drawing Number:		Revision:	
NES-AJM-PWD-PWD-MAP-XLP-VIC-0419118		A.1	
Drawn By:	Approved By:	Date:	Map Size:
R.Lancaster	G. Whelan	12/09/2019	A3

0 100 200

Metres

Coordinate System: GDA 1994 MGA Zone 55

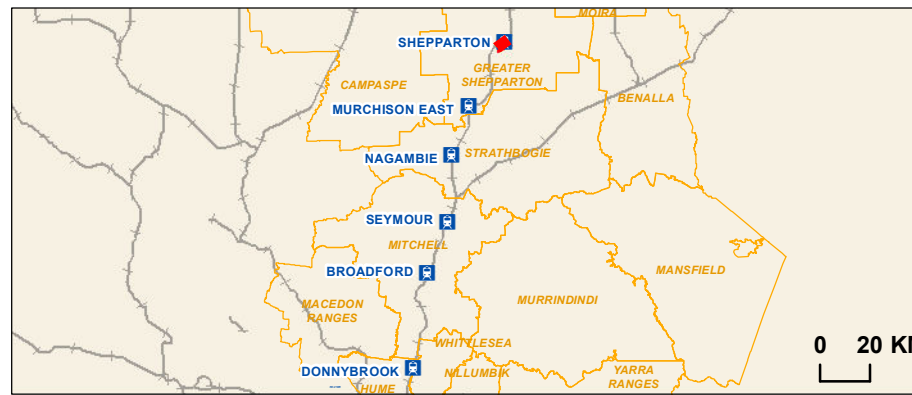


DRAFT & CONFIDENTIAL

- Rail station
- Railway
- LGA
- Cadastre
- GC135 Project Land
- EAO-Environmental Audit Overlay
- DDO-Design and Development Overlay
- DPO-Development Plan Overlay
- HO-Heritage Overlay
- BMO-Bushfire Management Overlay
- FO-Floodway Overlay
- LSIO-Land Subject to Inundation Overlay
- PAO-Public Acquisition Overlay
- PO-Parking Overlay
- RXO-Road Closure Overlay

Map 66 of 69

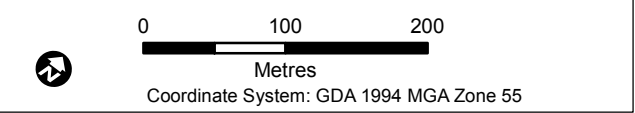
Data Sources:
 AJM 2019
 Advisian 2018
 Vicmap 2018
 Basemap: ESRI 2018

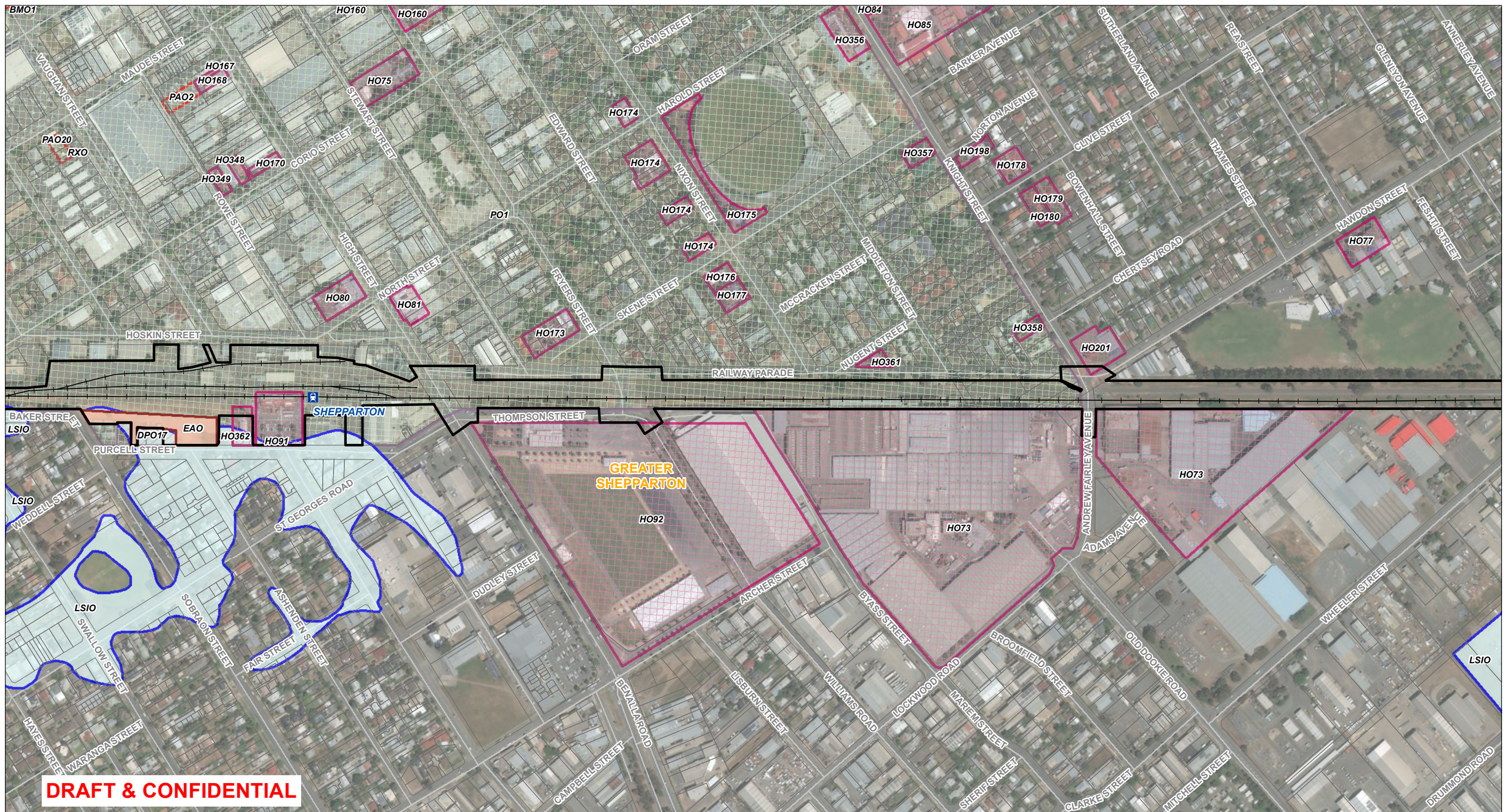


**Regional Rail Revival
 North-East & Shepparton**

Planning Overlays

Drawing Number: NES-AJM-PWD-PWD-MAP-XLP-VIC-0419118	Revision: A.1
Drawn By: R.Lancaster	Approved By: G. Whelan
Date: 12/09/2019	Map Size: A3



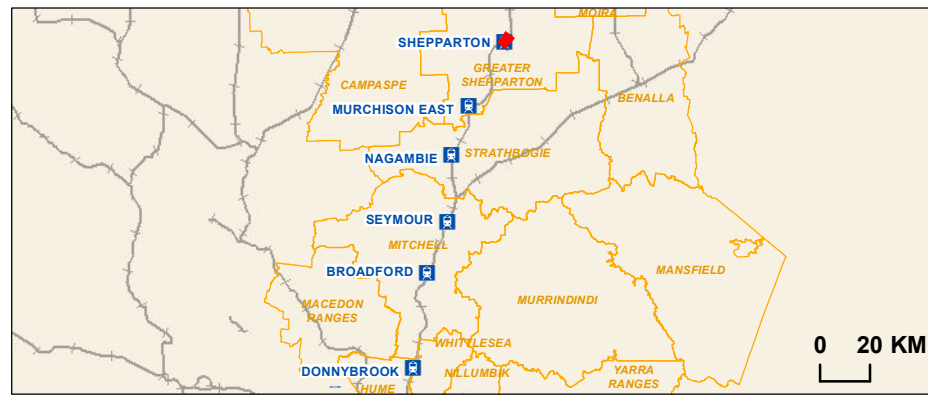


DRAFT & CONFIDENTIAL

- Rail station
- Railway
- LGA
- Cadastre
- GC135 Project Land
- EAO-Environmental Audit Overlay
- DPO-Development Plan Overlay
- HO-Heritage Overlay
- BMO-Bushfire Management Overlay
- LSIO-Land Subject to Inundation Overlay
- PAO-Public Aquisition Overlay
- PO-Parking Overlay
- RXO-Road Closure Overlay

Map 67 of 69

Data Sources:
 AJM 2019
 Advisian 2018
 Vicmap 2018
 Basemap: ESRI 2018

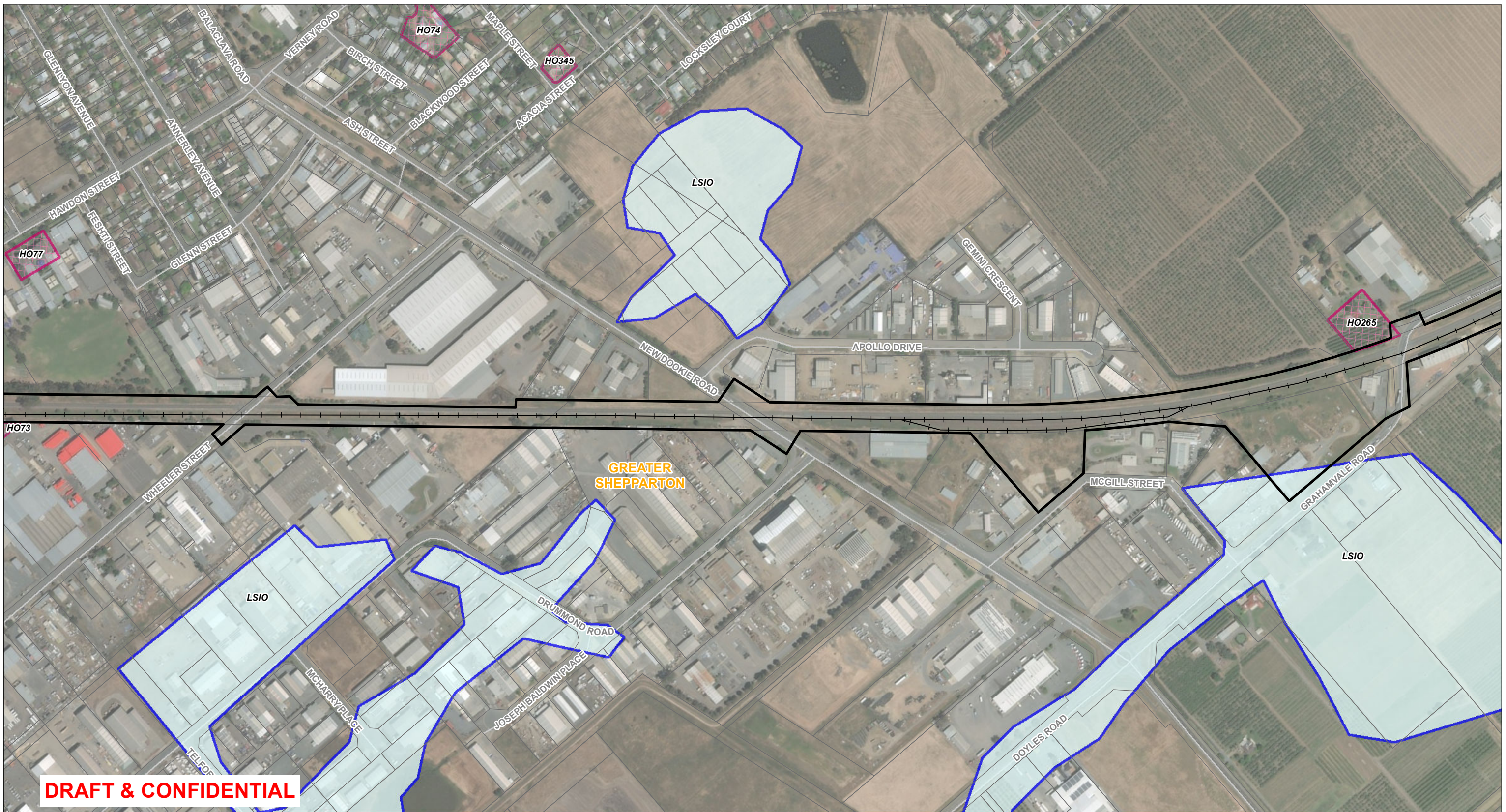


Regional Rail Revival
North-East & Shepparton


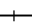





Planning Overlays

Drawing Number: NES-AJM-PWD-PWD-MAP-XLP-VIC-0419118		Revision: A.1	
Drawn By: R.Lancaster	Approved By: G. Whelan	Date: 12/09/2019	Map Size: A3

0 100 200
 Metres
 Coordinate System: GDA 1994 MGA Zone 55

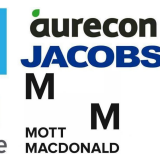
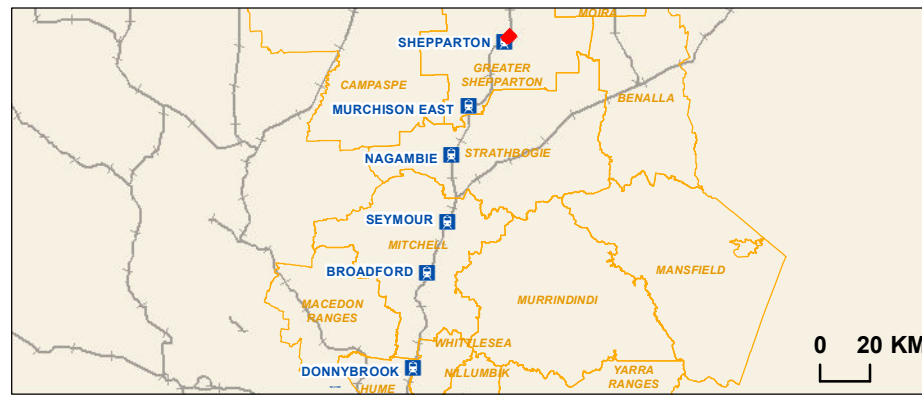


DRAFT & CONFIDENTIAL

-  Rail station
-  Railway
-  LGA
-  Cadastre
-  GC135 Project Land
-  HO-Heritage Overlay
-  LSIO-Land Subject to Inundation Overlay

Map 68 of 69

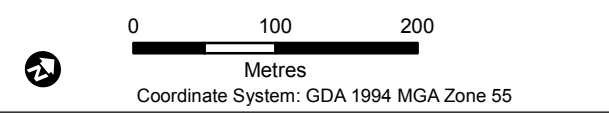
Data Sources:
 AJM 2019
 Advisian 2018
 Vicmap 2018
 Basemap: ESRI 2018




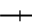





**Regional Rail Revival
 North-East & Shepparton**

Planning Overlays

Drawing Number: NES-AJM-PWD-PWD-MAP-XLP-VIC-0419118		Revision: A.1	
Drawn By: R.Lancaster	Approved By: G. Whelan	Date: 12/09/2019	Map Size: A3

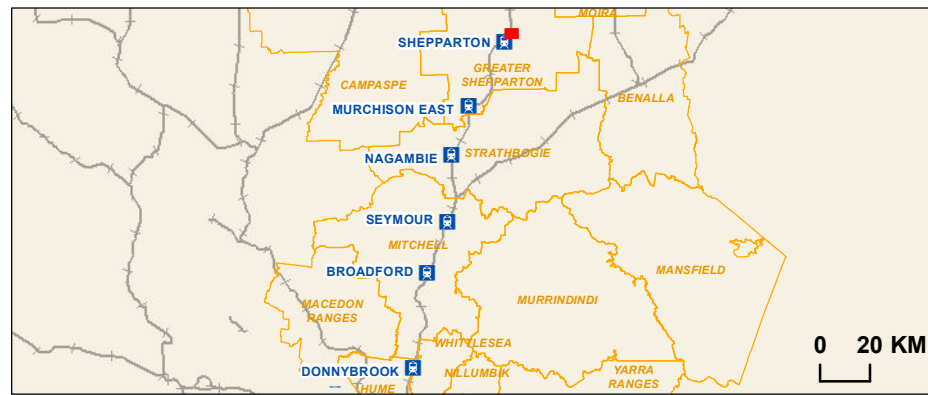




-  Rail station
-  Railway
-  LGA
-  Cadastre
-  GC135 Project Land
-  HO-Heritage Overlay
-  LSIO-Land Subject to Inundation Overlay

Map 69 of 69

Data Sources:
 AJM 2019
 Advisian 2018
 Vicmap 2018
 Basemap: ESRI 2018



Regional Rail Revival
North-East & Shepparton

Planning Overlays

Drawing Number:		Revision:	
NES-AJM-PWD-PWD-MAP-XLP-VIC-0419118		A.1	
Drawn By:	Approved By:	Date:	Map Size:
R.Lancaster	G. Whelan	12/09/2019	A3

0 100 200
 Metres
 Coordinate System: GDA 1994 MGA Zone 55