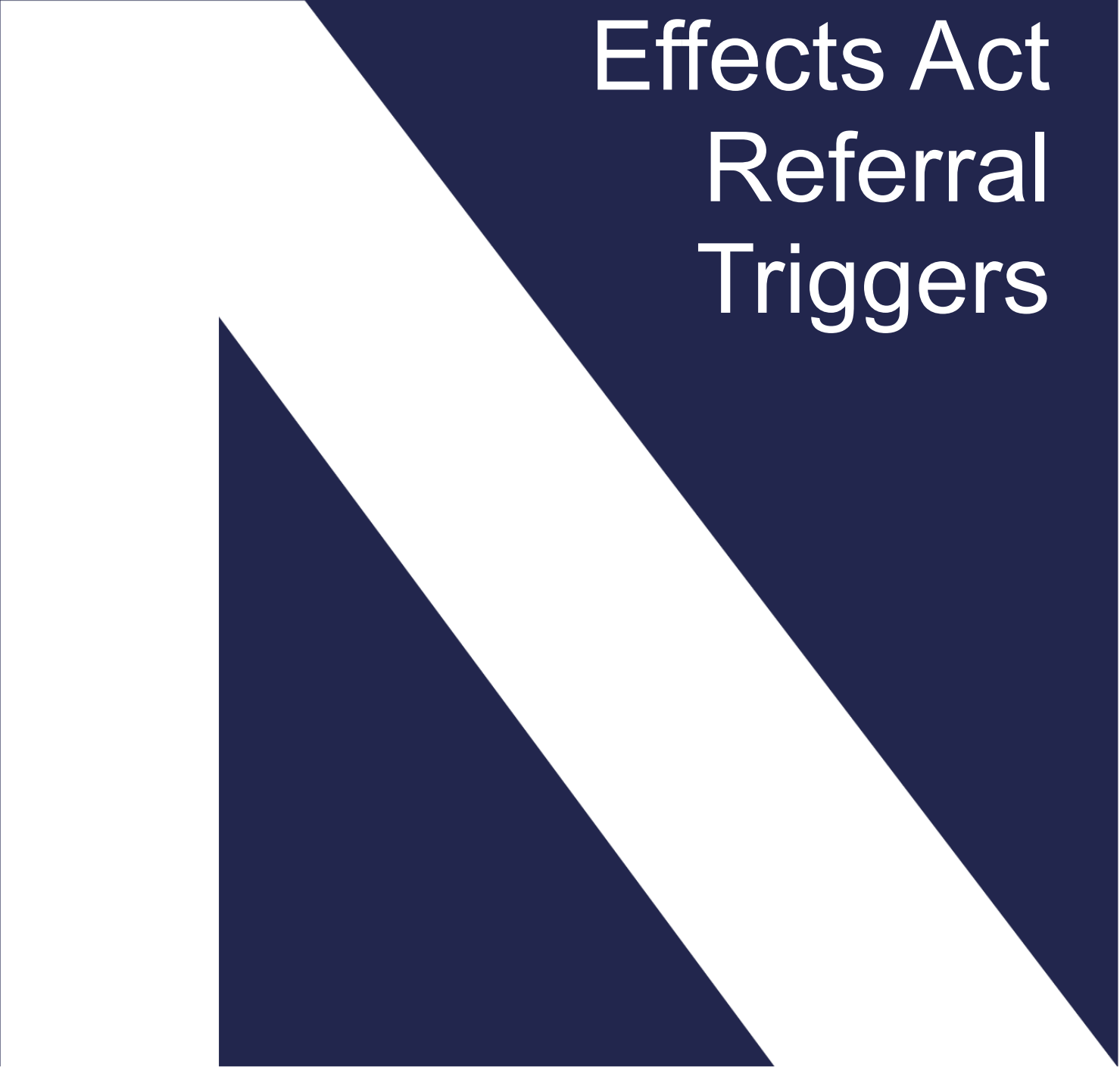


Appendix C

Self-
Assessment of
Environment
Effects Act
Referral
Triggers



Appendix C - Self-Assessment of Environment Effects Act Referral

Triggers

The trigger for a referral under the EE Act is determined by criteria detailed in the Ministerial Guidelines for Assessment of Environment Effects (DSE 2006). There are two criterion categories:

- Individual criteria (meeting one of these criteria triggers the requirement for a referral)
- Combination criteria (meeting two or more of these criteria triggers the requirement for a referral)

In this assessment the proposed works are assessed against the criteria which are relevant to flora and fauna as per the scope of this ecological impact assessment¹⁰. Individual criteria are assessed in Table C.1 and combination criteria are assessed in Table C.2. Based on this assessment, a referral under the EE Act is triggered through meeting one individual criterion relevant to flora and fauna.

TABLE C.1: ASSESSMENT AGAINST INDIVIDUAL CRITERIA RELEVANT TO FLORA AND FAUNA

CRITERION	ASSESSMENT OF THE PROPOSED WORKS	OUTCOME
<p>Potential clearing of 10 ha or more of native vegetation from an area that:</p> <ul style="list-style-type: none"> • is of an Ecological Vegetation Class identified as endangered by the Department of Sustainability and Environment (in accordance with Appendix 2 of Victoria's Native Vegetation Management Framework); or • is, or is likely to be, of very high conservation significance (as defined in accordance with Appendix 3 of Victoria's Native Vegetation Management Framework); and • is not authorised under an approved Forest Management Plan or Fire Protection Plan 	<p>To facilitate the proposed works the following extents of native vegetation clearing are required:</p> <p>14.22 ha of endangered EVCs including:</p> <ul style="list-style-type: none"> • 11 ha of mapped native vegetation patches • 0.17 ha of time-stamped native vegetation • 91 scattered trees <p>12.47 ha of vegetation that is of Very High Conservation Significance including:</p> <ul style="list-style-type: none"> • 12.3 ha of vegetation patches • 0.17 ha of time-stamped native vegetation <p>It is assumed that none of the above extents are authorised under an approved Forest Management Plan or Fire Protection Plan.</p>	Criterion met
<p>Potential long-term loss of a significant proportion (e.g. 1 to 5 percent depending on the conservation status of the species) of known remaining habitat or population of a threatened species within Victoria</p>	<p>Given the fragmented and degraded nature of the Shepparton Line rail corridor, it is highly unlikely that the proposed works will result in a significant long-term loss of the remaining habitat for a threatened species or a significant proportion of the remaining population of a threatened species.</p>	Criterion not met
<p>Potential long-term change to the ecological character of a wetland listed under the Ramsar Convention or in 'A Directory of Important Wetlands in Australia'</p>	<p>No Ramsar wetlands or wetlands that appear in 'A Directory of Important Wetlands in Australia' are expected to be impacted by the proposed works.</p>	Criterion not met
<p>Potential extensive or major effects on the health or biodiversity of aquatic, estuarine or marine ecosystems, over the long term</p>	<p>Given the 'waterways and wetlands measures', and 'general construction measures' mitigation measures to be implemented, is unlikely that the proposed works will result in extensive or major effects on aquatic systems.</p>	Criterion not met

¹⁰ Assessment assumes that all mitigation measures called for within Section 6.2 of this report are implemented.

TABLE C.2: ASSESSMENT AGAINST COMBINATION CRITERIA RELEVANT TO FLORA AND FAUNA

CRITERION	ASSESSMENT OF THE PROPOSED WORKS	OUTCOME
<p>Potential clearing of 10 ha or more of native vegetation, unless authorised under an approved Forest Management Plan or Fire Protection Plan</p>	<p>To facilitate the proposed works the following extents of native vegetation clearing are required:</p> <p>24.04 ha of native vegetation including:</p> <ul style="list-style-type: none"> • 20.91 ha of native vegetation patches • 0.17 ha of time-stamped native vegetation • 91 Scattered trees <p>It is assumed that none of the above extents are authorised under an approved Forest Management Plan or Fire Protection Plan.</p>	<p>Criterion met</p>
<p>Matters listed under the Flora and Fauna Guarantee Act 1988:</p> <ul style="list-style-type: none"> • potential loss of a significant area of a listed ecological community; or • potential loss of a genetically important population of an endangered or threatened species (listed or nominated for listing), including as a result of loss or fragmentation of habitats; or • potential loss of critical habitat; or • potential significant effects on habitat values of a wetland supporting migratory bird species 	<p>Given the highly disturbed and already fragmented nature of the project area, and the mitigation measures to be implemented, it is unlikely that these matters will be affected as described in the criterion.</p>	<p>Criterion not met</p>

Appendix D

Flora and Fauna
Species
Observed



Appendix D - Flora and Fauna Species Recorded Within the Study Area

TABLE D.1: FLORA SPECIES RECORDED DURING FIELD ASSESSMENT. KEY TO ORIGIN: * = NON-INDIGENOUS; C = NOXIOUS WEED LISTED UNDER THE CALP ACT. KEY TO CONSERVATION STATUS: EN = ENDANGERED; VU = VULNERABLE; P = PROTECTED SPECIES UNDER THE EPBC ACT; L = THREATENED SPECIES LISTED UNDER THE FFG ACT.

SCIENTIFIC NAME	COMMON NAME	ORIGIN	CONSERVATION STATUS			COUNT OF INDIVIDUALS TO BE REMOVED (FFG PROTECTED ONLY)
			EPBC	FFG	VICADV	
<i>Acacia acinacea</i> s.s.	Gold-dust Wattle			P		1000
<i>Acacia baileyana</i>	Cootamundra Wattle	Exotic				
<i>Acacia dealbata</i>	Silver Wattle					
<i>Acacia decurrens</i>	Early Black-wattle	Exotic				
<i>Acacia implexa</i>	Lightwood					
<i>Acacia mearnsii</i>	Black Wattle			P		200
<i>Acacia melanoxylon</i>	Blackwood					
<i>Acacia montana</i>	Mallee Wattle			P		10
<i>Acacia paradoxa</i>	Hedge Wattle					
<i>Acacia provincialis</i>	Wirilda	*				
<i>Acacia pycnantha</i>	Golden Wattle			P		250
<i>Acacia saligna</i>	Golden Wreath Wattle	Exotic				
<i>Acacia verniciflua</i> (1-nerved variant)	Seymour Wattle			P	vu	20
<i>Acaena novae-zelandiae</i>	Bidgee-widgee					
<i>Agrostis</i> s.l. spp.	Bent/Blown Grass					
<i>Ajuga australis</i>	Austral Bugle					
<i>Alisma plantago-aquatica</i>	Water Plantain					
<i>Allocasuarina verticillata</i>	Drooping Sheoak					
<i>Alternanthera denticulata</i> s.l.	Lesser Joyweed					
<i>Amphibromus nervosus</i>	Common Swamp Wallaby-grass					
<i>Amyema</i> spp.	Mistletoe					
<i>Anthosachne scabra</i> s.l.	Common Wheat-grass					
<i>Anthoxanthum odoratum</i>	Sweet Vernal-grass	Exotic				
<i>Arctotheca calendula</i>	Cape weed	Exotic				
<i>Arthropodium</i> spp. (s.s.)	Vanilla Lily					
<i>Asparagus asparagoides</i>	Bridal Creeper	Exotic; C				
<i>Asphodelus fistulosus</i>	Onion Weed	Exotic				
<i>Atriplex semibaccata</i>	Berry Saltbush					
<i>Atriplex</i> spp.	Saltbush					

SCIENTIFIC NAME	COMMON NAME	ORIGIN	CONSERVATION STATUS			COUNT OF INDIVIDUALS TO BE REMOVED (FFG PROTECTED ONLY)
			EPBC	FFG	VICADV	
<i>Austrostipa mollis</i>	Supple Spear-grass					
<i>Austrostipa scabra</i>	Rough Spear-grass					
<i>Austrostipa scabra subsp. falcata</i>	Rough Spear-grass					
<i>Austrostipa spp.</i>	Spear Grass					
<i>Avena fatua</i>	Wild Oat	Exotic				
<i>Avena spp.</i>	Oat	Exotic				
<i>Bolboschoenus medianus</i>	Marsh Club-sedge					
<i>Bossiaea prostrata</i>	Creeping Bossiaea					
<i>Bothriochloa macra</i>	Red-leg Grass					
<i>Briza maxima</i>	Large Quaking-grass	Exotic				
<i>Briza minor</i>	Lesser Quaking-grass	Exotic				
<i>Bromus spp.</i>	Brome					
<i>Bulbine bulbosa</i>	Bulbine Lily					
<i>Bursaria spinosa</i>	Sweet Bursaria					
<i>Bursaria spinosa subsp. spinosa</i>	Sweet Bursaria					
<i>Callistemon spp.</i>	Bottlebrush					
<i>Callitris spp.</i>	Cypress-pine					
<i>Calocephalus citreus</i>	Lemon Beauty-heads					
<i>Calocephalus lacteus</i>	Milky Beauty-heads					
<i>Carex appressa</i>	Tall Sedge					
<i>Carex bichenoviana</i>	Plains Sedge					
<i>Carex inversa</i>	Knob Sedge					
<i>Carex spp.</i>	Sedge					
<i>Cassinia aculeata subsp. aculeata</i>	Common Cassinia			P		1000
<i>Cenchrus clandestinus</i>	Kikuyu	Exotic				
<i>Centipeda cunninghamii</i>	Common Sneezeweed			P		10
<i>Chenopodium spp.</i>	Goosefoot					
<i>Chloris spp.</i>	Windmill Grass					
<i>Chloris truncata</i>	Windmill Grass					
<i>Chrysocephalum apiculatum s.l.</i>	Common Everlasting			P		20
<i>Chrysocephalum semipapposum</i>	Clustered Everlasting			P		75

SCIENTIFIC NAME	COMMON NAME	ORIGIN	CONSERVATION STATUS			COUNT OF INDIVIDUALS TO BE REMOVED (FFG PROTECTED ONLY)
			EPBC	FFG	VICADV	
<i>Cirsium vulgare</i>	Spear Thistle	Exotic; C				
<i>Clematis aristata</i>	Mountain Clematis					
<i>Convolvulus angustissimus</i>	Blushing Bindweed					
<i>Convolvulus remotus</i>	Grass Bindweed					
<i>Coronidium gunnianum</i>	Pale Swamp Everlasting			P	vu	
<i>Corymbia maculata</i>	Spotted Gum	Exotic				
<i>Crataegus monogyna</i>	Hawthorn	Exotic; C				
<i>Cupressus spp.</i>	Cypress	Exotic				
<i>Cycnogeton spp.</i>	Water Ribbons					
<i>Cynara cardunculus subsp. flavescens</i>	Artichoke Thistle	Exotic; C				
<i>Cynodon dactylon var. dactylon</i>	Couch	Exotic				
<i>Cynoglossum suaveolens</i>	Sweet Hound's-tongue					
<i>Cyperus eragrostis</i>	Drain Flat-sedge	Exotic				
<i>Cyperus exaltatus</i>	Tall Flat-sedge					
<i>Cyperus spp.</i>	Flat Sedge					
<i>Dactylis glomerata</i>	Cocksfoot	Exotic				
<i>Daviesia latifolia</i>	Hop Bitter-pea					
<i>Daviesia leptophylla</i>	Narrow-leaf Bitter-pea					
<i>Dianella admixta</i>	Black-anther Flax-lily					
<i>Dianella amoena</i>	Matted Flax-lily		EN	L	en	0
<i>Dianella longifolia s.l.</i>	Pale Flax-lily					
<i>Dianella revoluta s.l.</i>	Black-anther Flax-lily					
<i>Dianella tarda</i>	Late-flower Flax-lily				vu	
<i>Dichelachne spp.</i>	Plume Grass					
<i>Dillwynia cinerascens s.l.</i>	Grey Parrot-pea					
<i>Dillwynia spp.</i>	Parrot Pea					
<i>Ehrharta erecta var. erecta</i>	Panic Veldt-grass	Exotic				
<i>Ehrharta longiflora</i>	Annual Veldt-grass	Exotic				
<i>Einadia nutans</i>	Nodding Saltbush					
<i>Eleocharis acuta</i>	Common Spike-sedge					
<i>Elymus scaber</i>	Common Wheat Grass					

SCIENTIFIC NAME	COMMON NAME	ORIGIN	CONSERVATION STATUS			COUNT OF INDIVIDUALS TO BE REMOVED (FFG PROTECTED ONLY)
			EPBC	FFG	VICADV	
<i>Enchylaena tomentosa</i> var. <i>tomentosa</i>	Ruby Saltbush					
<i>Enteropogon acicularis</i>	Spider Grass					
<i>Epilobium billardierianum</i>	Variable Willow-herb					
<i>Epilobium ciliatum</i>	Glandular Willow-herb	Exotic				
<i>Epilobium</i> spp.	Willow Herb					
<i>Eryngium ovinum</i>	Blue Devil					
<i>Eryngium vesiculosum</i>	Prickfoot					
<i>Eucalyptus albens</i>	White Box					
<i>Eucalyptus camaldulensis</i>	River Red-gum					
<i>Eucalyptus camaldulensis</i> var. <i>camaldulensis</i>	River Red-gum					
<i>Eucalyptus cephalocarpa</i>	Silver-leaf Stringybark					
<i>Eucalyptus cladocalyx</i>	Sugar Gum	Exotic				
<i>Eucalyptus dives</i>	Broad-leaf Peppermint					
<i>Eucalyptus globulus</i>	Southern Blue-gum	*				
<i>Eucalyptus goniocalyx</i> s.l.	Bundy					
<i>Eucalyptus goniocalyx</i> subsp. <i>goniocalyx</i>	Bundy					
<i>Eucalyptus leucoxyton</i>	Yellow Gum	*				
<i>Eucalyptus leucoxyton</i>	Yellow Gum					
<i>Eucalyptus macrorhyncha</i>	Red Stringybark					
<i>Eucalyptus melliodora</i>	Yellow Box					
<i>Eucalyptus microcarpa</i>	Grey Box					
<i>Eucalyptus obliqua</i>	Messmate Stringybark					
<i>Eucalyptus ovata</i>	Swamp Gum					
<i>Eucalyptus polyanthemus</i>	Red Box					
<i>Eucalyptus radiata</i> s.l.	Narrow-leaf Peppermint					
<i>Eucalyptus radiata</i> subsp. <i>radiata</i>	Narrow-leaf Peppermint					
<i>Eucalyptus rubida</i>	Candlebark					
<i>Eucalyptus</i> spp.	Eucalypt					
<i>Eucalyptus tricarpa</i>	Red Ironbark					
<i>Eucalyptus tricarpa</i> subsp. <i>tricarpa</i>	Red Ironbark					
<i>Eucalyptus viminalis</i>	Manna Gum					

SCIENTIFIC NAME	COMMON NAME	ORIGIN	CONSERVATION STATUS			COUNT OF INDIVIDUALS TO BE REMOVED (FFG PROTECTED ONLY)
			EPBC	FFG	VICADV	
<i>Eucalyptus viminalis</i> subsp. <i>viminalis</i>	Manna Gum					
<i>Eucalyptus yarraensis</i>	Yarra Gum				r	
<i>Euchiton involucratus</i> s.l.	Common Cudweed					
<i>Euphorbia drummondii</i> s.l.	Flat Spurge	*				
<i>Exocarpos cupressiformis</i>	Cherry Ballart					
<i>Foeniculum vulgare</i>	Fennel	Exotic; C				
<i>Fraxinus angustifolia</i>	Desert Ash	Exotic				
<i>Fraxinus</i> spp.	Ash	Exotic				
<i>Gahnia</i> spp.	Saw Sedge					
<i>Gazania</i> spp.	Gazania	Exotic				
<i>Genista monspessulana</i>	Montpellier Broom	Exotic; C				
<i>Geranium gardneri</i>	Rough Crane's-bill					
<i>Geranium potentilloides</i>	Soft Crane's-bill					
<i>Geranium retrorsum</i> s.l.	Grassland Crane's-bill					
<i>Geranium</i> sp. 2	Variable Crane's-bill					
<i>Geranium</i> spp.	Crane's Bill					
<i>Glyceria</i> spp.	Sweet Grass					
<i>Glycine clandestina</i>	Twining Glycine					
<i>Glycine</i> spp.	Glycine					
<i>Gompholobium huegelii</i>	Common Wedge-pea			P		10
<i>Gonocarpus tetragynus</i>	Common Raspwort					
<i>Goodenia ovata</i>	Hop Goodenia					
<i>Goodenia</i> spp.	Goodenia					
<i>Haloragis</i> spp.	Raspwort					
<i>Hardenbergia violacea</i>	Purple Coral-pea					
<i>Hedera</i> spp.	Ivy	Exotic				
<i>Helichrysum luteoalbum</i>	Jersey Cudweed					
<i>Helminthotheca echioides</i>	Ox-tongue	Exotic				
<i>Hibbertia</i> spp.	Guinea Flower					
<i>Hordeum</i> spp.	Barley Grass	Exotic				
<i>Hypericum gramineum</i>	Small St John's Wort					
<i>Hypericum perforatum</i> subsp. <i>veronense</i>	St John's Wort	Exotic; C				
<i>Hypochaeris radicata</i>	Flatweed	Exotic				
<i>Hypochaeris</i> spp.	Cat's Ear	Exotic				

SCIENTIFIC NAME	COMMON NAME	ORIGIN	CONSERVATION STATUS			COUNT OF INDIVIDUALS TO BE REMOVED (FFG PROTECTED ONLY)
			EPBC	FFG	VICADV	
<i>Hypoxis s.l. spp.</i>	Hypoxis					
<i>Isolepis spp.</i>	Club Sedge					
<i>Juncus acutus subsp. acutus</i>	Spiny Rush	Exotic; C				
<i>Juncus amabilis</i>	Hollow Rush					
<i>Juncus aridicola</i>	Tussock Rush					
<i>Juncus spp.</i>	Rush					
<i>Juncus subsecundus</i>	Finger Rush					
<i>Kennedia prostrata</i>	Running Postman					
<i>Kurajong spp.</i>	Kurajong	*				
<i>Lachnagrostis filiformis s.l.</i>	Common Blown-grass					
<i>Lactuca serriola</i>	Prickly Lettuce	Exotic				
<i>Lepidosperma gunnii</i>	Slender Sword-sedge					
<i>Leptorhynchos tenuifolius</i>	Wiry Buttons					
<i>Leptospermum myrsinoides</i>	Heath Tea-tree					
<i>Leptospermum spp.</i>	Tea Tree					
<i>Ligustrum spp.</i>	Privet	Exotic				
<i>Lolium perenne</i>	Perennial Rye-grass	Exotic				
<i>Lolium spp.</i>	Rye Grass	Exotic				
<i>Lomandra filiformis</i>	Wattle Mat-rush					
<i>Lomandra filiformis subsp. filiformis</i>	Wattle Mat-rush					
<i>Lomandra longifolia subsp. exilis</i>	Cluster-headed Mat-rush					
<i>Lomandra spp.</i>	Mat-rush					
<i>Lycium ferocissimum</i>	African Box-thorn	Exotic; C				
<i>Lysimachia arvensis</i>	Pimpernel	Exotic				
<i>Lysimachia arvensis (Red-flowered variant)</i>	Scarlet Pimpernel	Exotic				
<i>Lythrum hyssopifolia</i>	Small Loosestrife					
<i>Maireana enchylaenoides</i>	Wingless Bluebush					
<i>Marrubium vulgare</i>	Horehound	Exotic; C				
<i>Melaleuca ericaefolia</i>	Swamp Paperbark					
<i>Melaleuca spp.</i>	Honey-myrtle					
<i>Melaleuca styphelioides</i>	Prickly Paperbark	Exotic				
<i>Melicytus dentatus s.l.</i>	Tree Violet					
<i>Mentha spp.</i>	Mint					
<i>Microlaena stipoides var. stipoides</i>	Weeping Grass					

SCIENTIFIC NAME	COMMON NAME	ORIGIN	CONSERVATION STATUS			COUNT OF INDIVIDUALS TO BE REMOVED (FFG PROTECTED ONLY)
			EPBC	FFG	VICADV	
<i>Myriophyllum crispatum</i>	Upright Water-milfoil					
<i>Nassella neesiana</i>	Chilean Needle-grass	Exotic; C				
<i>Nassella trichotoma</i>	Serrated Tussock	Exotic; C				
<i>Onopordum acanthium subsp. acanthium</i>	Scotch Thistle	Exotic; C				
<i>Opuntia spp.</i>	Prickly pear	Exotic; C				
<i>Oxalis spp.</i>	Wood Sorrel					
<i>Panicum decompositum var. decompositum</i>	Native Millet					
<i>Panicum effusum</i>	Hairy Panic					
<i>Paspalidium jubiflorum</i>	Warrego Summer-grass	*				
<i>Paspalum dilatatum</i>	Paspalum	Exotic				
<i>Paspalum distichum</i>	Water Couch	Exotic				
<i>Paspalum spp.</i>	Paspalum	Exotic				
<i>Pelargonium spp.</i>	Stork's Bill					
<i>Persicaria decipiens</i>	Slender Knotweed					
<i>Persicaria spp.</i>	Knotweed					
<i>Persicaria subsessilis</i>	Hairy Knotweed					
<i>Phalaris aquatica</i>	Toowoomba Canary-grass	Exotic				
<i>Phalaris canariensis</i>	Canary Grass	Exotic				
<i>Phalaris spp.</i>	Canary Grass	Exotic				
<i>Phoenix canariensis</i>	Canary Island Date-palm	Exotic				
<i>Phragmites australis</i>	Common Reed					
<i>Pimelea curviflora s.l.</i>	Curved Rice-flower					
<i>Pimelea curviflora s.s.</i>	Curved Rice-flower					
<i>Pimelea humilis</i>	Common Rice-flower					
<i>Pimelea spp.</i>	Rice Flower					
<i>Pinus radiata</i>	Radiata Pine	Exotic				
<i>Pinus spp.</i>	Pine	Exotic				
<i>Piptatherum miliaceum</i>	Rice Millet	Exotic				
<i>Pittosporum undulatum</i>	Sweet Pittosporum	*				
<i>Plantago lanceolata</i>	Ribwort	Exotic				
<i>Plantago spp.</i>	Plantain					
<i>Poa labillardierei</i>	Common Tussock-grass					
<i>Poa spp.</i>	Tussock Grass					

SCIENTIFIC NAME	COMMON NAME	ORIGIN	CONSERVATION STATUS			COUNT OF INDIVIDUALS TO BE REMOVED (FFG PROTECTED ONLY)
			EPBC	FFG	VICADV	
<i>Pteridium esculentum</i>	Austral Bracken					
<i>Pyracantha spp.</i>	Firethorn	Exotic				
<i>Ranunculus inundatus</i>	River Buttercup					
<i>Rosa rubiginosa</i>	Sweet Briar	Exotic; C				
<i>Rubus anglocandicans</i>	Common Blackberry	Exotic; C				
<i>Rubus fruticosus spp. agg.</i>	Blackberry	Exotic; C				
<i>Rumex crystallinus s.l.</i>	Glistening Dock					
<i>Rumex spp.</i>	Dock					
<i>Rytidosperma caespitosum</i>	Common Wallaby-grass					
<i>Rytidosperma duttonianum</i>	Brown-back Wallaby-grass					
<i>Rytidosperma erianthum</i>	Hill Wallaby-grass					
<i>Rytidosperma pallidum</i>	Silvertop Wallaby-grass					
<i>Rytidosperma setaceum</i>	Bristly Wallaby-grass					
<i>Rytidosperma spp.</i>	Wallaby Grass					
<i>Salix spp.</i>	Willow	Exotic; C				
<i>Schinus molle</i>	Pepper Tree	Exotic				
<i>Selliera radicans</i>	Swampweed					
<i>Senecio quadridentatus</i>	Cotton Fireweed			P		20
<i>Sida corrugata</i>	Variable Sida					
<i>Silene apetala</i>	Mallee Catchfly	Exotic				
<i>Solanum esuriale</i>	Quena					
<i>Solanum nigrum s.l.</i>	Black Nightshade	Exotic				
<i>Solanum pseudocapsicum</i>	Madeira Winter-cherry	Exotic				
<i>Solanum quadriloculatum</i>	Tomato Bush					
<i>Taraxacum officinale spp. agg.</i>	Garden Dandelion	Exotic				
<i>Themeda triandra</i>	Kangaroo Grass					
<i>Trifolium spp.</i>	Clover	Exotic				
<i>Typha spp.</i>	Bulrush					
<i>Ulex europaeus</i>	Gorse	Exotic; C				
<i>Ulmus spp.</i>	Elm	Exotic				
<i>Verbascum blattaria</i>	Moth Mullein	Exotic				
<i>Vittadinia spp.</i>	New Holland Daisy					
<i>Wahlenbergia spp.</i>	Bluebell					
<i>Xanthorrhoea australis</i>	Austral Grass-tree			P		50

SCIENTIFIC NAME	COMMON NAME	ORIGIN	CONSERVATION STATUS			COUNT OF INDIVIDUALS TO BE REMOVED (FFG PROTECTED ONLY)
			EPBC	FFG	VICADV	
<i>Xerochrysum palustre</i>	Swamp Everlasting		VU	L	vu	0
<i>Xerochrysum viscosum</i>	Shiny Everlasting			P		50
<i>Zantedeschia aethiopica</i>	White Arum-lily	Exotic				

Fauna species recorded incidentally and during targeted surveys.

TABLE D.2: FAUNA SPECIES RECORDED DURING FIELD ASSESSMENT AND SURVEYS

SCIENTIFIC NAME	COMMON NAME	ORIGIN	CONSERVATION STATUS		
			EPBC	FFG	VICADV
<i>Acanthiza nana</i>	Yellow Thornbill				
<i>Acanthiza pusilla</i>	Brown Thornbill				
<i>Acridotheres tristis</i>	Common Myna	Introduced			
<i>Acrocephalus stentoreus</i>	Australian Reed Warbler				
<i>Alisterus scapularis</i>	Australian King-Parrot				
<i>Anas superciliosa</i>	Pacific Black Duck				
<i>Anthochaera carunculata</i>	Red Wattlebird				
<i>Anthochaera chrysoptera</i>	Little Wattlebird				
<i>Aquila audax</i>	Wedge-tailed Eagle				
<i>Cacatua galerita</i>	Sulphur-crested Cockatoo				
<i>Cacatua tenuirostris</i>	Long-billed Corella				
<i>Callocephalon fimbriatum</i>	Gang-gang Cockatoo				
<i>Calyptorhynchus funereus</i>	Yellow-tailed Black-Cockatoo				
<i>Carassius auratus</i>	Goldfish	Introduced			
<i>Chenonetta jubata</i>	Australian Wood Duck				
<i>Colluricincla harmonica</i>	Grey Shrike-thrush				
<i>Coracina novaehollandiae</i>	Black-faced Cuckoo-shrike				
<i>Corcorax melanorhamphos</i>	White-winged Chough				
<i>Cormobates leucophaeus</i>	White-throated Treecreeper				
<i>Corvus coronoides</i>	Australian Raven				
<i>Corvus mellori</i>	Little Raven				
<i>Coturnix ypsilophora australis</i>	Brown Quail				
<i>Cracticus tibicen</i>	Australian Magpie				
<i>Cracticus torquatus</i>	Grey Butcherbird				
<i>Crinia signifera</i>	Common Froglet				
<i>Dacelo novaeguineae</i>	Laughing Kookaburra				

SCIENTIFIC NAME	COMMON NAME	ORIGIN	CONSERVATION STATUS		
			EPBC	FFG	VICADV
<i>Delma inornata</i>	Olive Legless Lizard				
<i>Dromaius novaehollandiae</i>	Emu			nt	
<i>Egretta novaehollandiae</i>	White-faced Heron				
<i>Elanus axillaris</i>	Black-shouldered Kite				
<i>Entomyzon cyanotis</i>	Blue-faced Honeyeater				
<i>Eolophus roseicapillus</i>	Galah				
<i>Falco cenchroides</i>	Nankeen Kestrel				
<i>Gambusia holbrooki</i>	Eastern Gambusia	Introduced			
<i>Glossopsitta concinna</i>	Musk Lorikeet				
<i>Grallina cyanoleuca</i>	Magpie-lark				
<i>Haliastur sphenurus</i>	Whistling Kite				
<i>Hemiergis decresiensis</i>	Three-toed Skink				
<i>Hirundo neoxena</i>	Welcome Swallow				
<i>Lampropholis guichenoti</i>	Garden Skink				
<i>Lepus europeus</i>	European Hare	Introduced			
<i>Lichenostomus chrysops</i>	Yellow-faced Honeyeater				
<i>Lichenostomus penicillatus</i>	White-plumed Honeyeater				
<i>Limnodynastes dumerilii dumerilii</i>	Pobblebonk Frog				
<i>Limnodynastes tasmaniensis</i>	Spotted Marsh Frog				
<i>Litoria peronii</i>	Peron's Tree Frog				
<i>Macropus giganteus</i>	Eastern Grey Kangaroo				
<i>Malurus cyaneus</i>	Superb Fairy-wren				
<i>Manorina melanocephala</i>	Noisy Miner				
<i>Melithreptus lunatus</i>	White-naped Honeyeater				
<i>Merops ornatus</i>	Rainbow Bee-eater				
<i>Milvus migrans</i>	Black Kite				
<i>Misgurnus anguillicaudatus</i>	Oriental Weatherloach	Introduced			
<i>Mus musculus</i>	House Mouse	Introduced			
<i>Neochmia temporalis</i>	Red-browed Finch				
<i>Neophema chrysostoma</i>	Blue-winged Parrot				
<i>Ocyphaps lophotes</i>	Crested Pigeon				
<i>Oryctolagus cuniculus</i>	European Rabbit	Introduced			
<i>Pachycephala olivacea</i>	Olive Whistler				
<i>Pardalotus punctatus punctatus</i>	Spotted Pardalote				
<i>Pardalotus striatus</i>	Striated Pardalote				
<i>Passer domesticus</i>	House Sparrow	Introduced			
<i>Passer montanus</i>	Eurasian Tree Sparrow	Introduced			
<i>Pelicanus conspicillatus</i>	Australian Pelican				

SCIENTIFIC NAME	COMMON NAME	ORIGIN	CONSERVATION STATUS		
			EPBC	FFG	VICADV
<i>Petrochelidon ariel</i>	Fairy Martin				
<i>Phaps chalcoptera</i>	Common Bronzewing				
<i>Philemon corniculatus</i>	Noisy Friarbird				
<i>Platycercus elegans</i>	Crimson Rosella				
<i>Platycercus eximius</i>	Eastern Rosella				
<i>Plegadis falcinellus</i>	Glossy Ibis			nt	
<i>Psephotus haematonotus</i>	Red-rumped Parrot				
<i>Pseudonaja textilis</i>	Eastern Brown Snake				
<i>Rhipidura albiscapa</i>	Grey Fantail				
<i>Rhipidura leucophrys</i>	Willie Wagtail				
<i>Rhipidura rufifrons</i>	Rufous Fantail				
<i>Rusa inicolor</i>	Sambar Deer	Introduced			
<i>Strepera graculina</i>	Pied Currawong				
<i>Sturnus vulgaris</i>	Common Starling	Introduced			
<i>Sugamel niger</i>	Black Honeyeater				
<i>Sus scrofa</i>	Pig (feral)	Introduced			
<i>Threskiornis molucca</i>	Australian White Ibis				
<i>Tiliqua scincoides</i>	Common Blue-tongued Lizard				
<i>Todiramphus sanctus</i>	Sacred Kingfisher				
<i>Trichoglossus chlorolepidotus</i>	Scaly-breasted Lorikeet				
<i>Trichoglossus haematodus</i>	Rainbow Lorikeet				
<i>Turdus merula</i>	Common Blackbird	Introduced			
<i>Vanellus miles</i>	Masked Lapwing				
<i>Vombatus ursinus</i>	Common Wombat				
<i>Vulpes vulpes</i>	Red Fox	Introduced			

Appendix E

NVR Report



Scenario test – native vegetation removal

This report provides offset requirements for internal testing of different proposals to remove native vegetation. **This report DOES NOT support an application to remove, destroy or lop native vegetation under Clause 52.16 or 52.17 of planning schemes in Victoria.** A report must be obtained from the Department of Environment, Land, Water and Planning (DELWP).

Date of issue: 13/07/2019

Time of issue: 7:16 pm

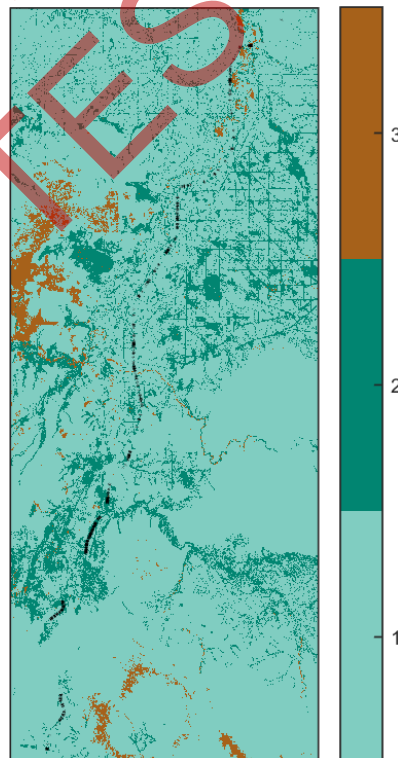
Report ID: Scenario Testing

Project ID	SLU_NVR_VICGRID94
------------	-------------------

Assessment pathway

Assessment pathway	Detailed Assessment Pathway
Extent including past and proposed	23.883 ha
Extent of past removal	0.000 ha
Extent of proposed removal	23.883 ha
No. Large trees proposed to be removed	169
Location category of proposed removal	Location 3 The native vegetation is in an area where the removal of less than 0.5 hectares could have a significant impact on habitat for one or more rare or threatened species. The native vegetation is also in an area mapped as an endangered Ecological Vegetation Class (as per the statewide EVC map).

1. Location map



Scenario test – native vegetation removal

Offset requirements if a permit is granted

Any approval granted will include a condition to obtain an offset that meets the following requirements:

General offset amount¹	11.881 general habitat units
Vicinity	Goulburn Broken, Port Phillip and Westernport Catchment Management Authority (CMA) or Greater Shepparton City, Mitchell Shire, Strathbogie Shire Council
Minimum strategic biodiversity value score ²	0.412
Large trees	169 large trees

NB: values within tables in this document may not add to the totals shown above due to rounding

Appendix 1 includes information about the native vegetation to be removed

Appendix 2 includes information about the rare or threatened species mapped at the site.

Appendix 3 includes maps showing native vegetation to be removed and extracts of relevant species habitat importance maps

SCENARIO TESTING

¹ The general offset amount required is the sum of all general habitat units in Appendix 1.

² Minimum strategic biodiversity score is 80 per cent of the weighted average score across habitat zones where a general offset is required

Scenario test – native vegetation removal

Next steps

Any proposal to remove native vegetation must meet the application requirements of the Detailed Assessment Pathway and it will be assessed under the Detailed Assessment Pathway.

This report DOES NOT support an application to remove, destroy or lop native vegetation under Clause 52.16 or 52.17 of planning schemes in Victoria.

If you wish to remove the mapped native vegetation you must submit the related shapefiles to the Department of Environment, Land, Water and Planning (DELWP) for processing, by email to ensymnvrtool.support@delwp.vic.gov.au. DELWP will provide a *Native vegetation removal report* that is required to meet the permit application requirements in accordance with *Guidelines for the removal, destruction or lopping of native vegetation* (Guidelines).

SCENARIO
TESTING

Appendix 1: Description of native vegetation to be removed

The species-general offset test was applied to your proposal. This test determines if the proposed removal of native vegetation has a proportional impact on any rare or threatened species habitats above the species offset threshold. The threshold is set at 0.005 per cent of the mapped habitat value for a species. When the proportional impact is above the species offset threshold a species offset is required. This test is done for all species mapped at the site. Multiple species offsets will be required if the species offset threshold is exceeded for multiple species.

Where a zone requires species offset(s), the species habitat units for each species in that zone is calculated by the following equation in accordance with the Guidelines:

$$\text{Species habitat units} = \text{extent} \times \text{condition} \times \text{species landscape factor} \times 2, \text{ where the species landscape factor} = 0.5 + (\text{habitat importance score}/2)$$

The species offset amount(s) required is the sum of all species habitat units per zone

Where a zone does not require a species offset, the general habitat units in that zone is calculated by the following equation in accordance with the Guidelines:

$$\text{General habitat units} = \text{extent} \times \text{condition} \times \text{general landscape factor} \times 1.5, \text{ where the general landscape factor} = 0.5 + (\text{strategic biodiversity value score}/2)$$

The general offset amount required is the sum of all general habitat units per zone.

Native vegetation to be removed

Information provided by or on behalf of the applicant in a GIS file							Information calculated by EnSym					
Zone	Type	BioEVC	BioEVC conservation status	Large tree(s)	Partial removal	Condition score	Polygon Extent	Extent without overlap	SBV score	HI score	Habitat units	Offset type
1-0	Scattered Tree	cvu_0061	Endangered	0	no	0.200	0.031	0.031	0.600		0.008	General
1-0	Scattered Tree	cvu_0061	Endangered	0	no	0.200	0.031	0.031	0.710		0.008	General
1-0	Scattered Tree	cvu_0061	Endangered	0	no	0.200	0.031	0.024	0.710		0.006	General
1-0	Scattered Tree	cvu_0061	Endangered	0	no	0.200	0.031	0.024	0.710		0.006	General
1-0	Scattered Tree	cvu_0061	Endangered	0	no	0.200	0.031	0.031	0.740		0.008	General
1-0	Scattered Tree	cvu_0061	Endangered	1	no	0.200	0.070	0.055	0.770		0.015	General
1-0	Scattered Tree	vriv0867	Endangered	0	no	0.200	0.031	0.019	0.861		0.005	General
1-0	Scattered Tree	vriv0867	Endangered	0	no	0.200	0.031	0.019	0.890		0.005	General

Information provided by or on behalf of the applicant in a GIS file							Information calculated by EnSym					
Zone	Type	BioEVC	BioEVC conservation status	Large tree(s)	Partial removal	Condition score	Polygon Extent	Extent without overlap	SBV score	HI score	Habitat units	Offset type
1-0	Scattered Tree	vriv0867	Endangered	0	no	0.200	0.031	0.020	0.390		0.004	General
1-0	Scattered Tree	vriv0867	Endangered	0	no	0.200	0.031	0.020	0.390		0.004	General
1-0	Scattered Tree	vriv0867	Endangered	0	no	0.200	0.031	0.031	0.490		0.007	General
1-0	Scattered Tree	vriv0867	Endangered	0	no	0.200	0.031	0.031	0.110		0.005	General
1-0	Scattered Tree	vriv0867	Endangered	0	no	0.200	0.031	0.031	0.347		0.006	General
1-0	Scattered Tree	vriv0803	Endangered	0	no	0.200	0.031	0.031	0.550		0.007	General
1-0	Scattered Tree	vriv0175	Endangered	0	no	0.200	0.031	0.031	0.350		0.006	General
1-0	Scattered Tree	vriv0175	Endangered	0	no	0.200	0.031	0.031	0.290		0.006	General
1-0	Scattered Tree	vriv0803	Endangered	1	no	0.200	0.070	0.070	0.100		0.012	General
1-0	Scattered Tree	vriv0055	Endangered	0	no	0.200	0.031	0.031	0.140		0.005	General
1-0	Scattered Tree	vriv0055	Endangered	0	no	0.200	0.031	0.031	0.150		0.005	General
1-0	Scattered Tree	vriv0055	Endangered	0	no	0.200	0.031	0.031	0.100		0.005	General
1-0	Scattered Tree	vriv0055	Endangered	0	no	0.200	0.031	0.031	0.460		0.007	General
1-0	Scattered Tree	vriv0055	Endangered	0	no	0.200	0.031	0.028	0.230		0.005	General
1-0	Scattered Tree	vriv0055	Endangered	0	no	0.200	0.031	0.017	0.230		0.003	General

Information provided by or on behalf of the applicant in a GIS file							Information calculated by EnSym					
Zone	Type	BioEVC	BioEVC conservation status	Large tree(s)	Partial removal	Condition score	Polygon Extent	Extent without overlap	SBV score	HI score	Habitat units	Offset type
1-0	Scattered Tree	vriv0055	Endangered	0	no	0.200	0.031	0.020	0.230		0.004	General
1-0	Scattered Tree	vriv0055	Endangered	0	no	0.200	0.031	0.031	0.510		0.007	General
1-0	Scattered Tree	vriv0055	Endangered	0	no	0.200	0.031	0.031	0.770		0.008	General
1-0	Scattered Tree	vriv0055	Endangered	1	no	0.200	0.070	0.070	0.310		0.014	General
1-0	Scattered Tree	vriv0125	Endangered	0	no	0.200	0.031	0.031	0.670		0.008	General
1-0	Scattered Tree	vriv0056	Endangered	0	no	0.200	0.031	0.001	0.270		0.000	General
1-0	Scattered Tree	vriv0056	Endangered	1	no	0.200	0.070	0.070	0.270		0.013	General
1-0	Scattered Tree	vriv0803	Endangered	0	no	0.200	0.031	0.031	0.160		0.005	General
1-0	Scattered Tree	vriv0803	Endangered	0	no	0.200	0.031	0.031	0.572		0.007	General
1-0	Scattered Tree	vriv0803	Endangered	0	no	0.200	0.031	0.024	0.817		0.007	General
1-0	Scattered Tree	vriv0803	Endangered	0	no	0.200	0.031	0.024	0.816		0.007	General
1-0	Scattered Tree	vriv0803	Endangered	1	no	0.200	0.070	0.070	0.457		0.015	General
1-0	Scattered Tree	vriv0803	Endangered	0	no	0.200	0.031	0.031	0.100		0.005	General
1-0	Scattered Tree	vriv0803	Endangered	0	no	0.200	0.031	0.023	0.130		0.004	General
1-0	Scattered Tree	vriv0803	Endangered	0	no	0.200	0.031	0.020	0.130		0.003	General

Information provided by or on behalf of the applicant in a GIS file							Information calculated by EnSym					
Zone	Type	BioEVC	BioEVC conservation status	Large tree(s)	Partial removal	Condition score	Polygon Extent	Extent without overlap	SBV score	HI score	Habitat units	Offset type
1-0	Scattered Tree	vriv0803	Endangered	0	no	0.200	0.031	0.021	0.129		0.004	General
1-0	Scattered Tree	vriv0803	Endangered	0	no	0.200	0.031	0.016	0.100		0.003	General
1-0	Scattered Tree	vriv0803	Endangered	1	no	0.200	0.070	0.070	0.100		0.012	General
1-0	Scattered Tree	vriv0803	Endangered	0	no	0.200	0.031	0.031	0.460		0.007	General
1-0	Scattered Tree	vriv0803	Endangered	0	no	0.200	0.031	0.022	0.270		0.004	General
1-0	Scattered Tree	vriv0803	Endangered	0	no	0.200	0.031	0.011	0.270		0.002	General
1-0	Scattered Tree	vriv0803	Endangered	0	no	0.200	0.031	0.020	0.270		0.004	General
1-0	Scattered Tree	vriv0803	Endangered	0	no	0.200	0.031	0.031	0.270		0.006	General
1-0	Scattered Tree	vriv0803	Endangered	1	no	0.200	0.070	0.070	0.435		0.015	General
1-0	Scattered Tree	vriv0803	Endangered	0	no	0.200	0.031	0.031	0.178		0.006	General
1-0	Scattered Tree	vriv0055	Endangered	0	no	0.200	0.031	0.031	0.100		0.005	General
1-0	Scattered Tree	vriv0055	Endangered	0	no	0.200	0.031	0.031	0.490		0.007	General
1-0	Scattered Tree	vriv0055	Endangered	0	no	0.200	0.031	0.024	0.170		0.004	General
1-0	Scattered Tree	vriv0055	Endangered	0	no	0.200	0.031	0.024	0.170		0.004	General
1-0	Scattered Tree	vriv0055	Endangered	0	no	0.200	0.031	0.020	0.170		0.003	General

Information provided by or on behalf of the applicant in a GIS file							Information calculated by EnSym					
Zone	Type	BioEVC	BioEVC conservation status	Large tree(s)	Partial removal	Condition score	Polygon Extent	Extent without overlap	SBV score	HI score	Habitat units	Offset type
1-0	Scattered Tree	vriv0055	Endangered	0	no	0.200	0.031	0.020	0.170		0.003	General
1-0	Scattered Tree	vriv0055	Endangered	0	no	0.200	0.031	0.030	0.480		0.007	General
1-0	Scattered Tree	vriv0055	Endangered	0	no	0.200	0.031	0.031	0.480		0.007	General
1-0	Scattered Tree	vriv0055	Endangered	0	no	0.200	0.031	0.031	0.100		0.005	General
1-0	Scattered Tree	vriv0055	Endangered	1	no	0.200	0.070	0.070	0.170		0.012	General
1-1	Scattered Tree	vriv0055	Endangered	1	no	0.200	0.070	0.070	0.340		0.014	General
1-1	Scattered Tree	vriv0055	Endangered	0	no	0.200	0.031	0.031	0.340		0.006	General
1-1	Scattered Tree	vriv0056	Endangered	0	no	0.200	0.031	0.018	0.880		0.005	General
1-1	Scattered Tree	vriv0056	Endangered	0	no	0.200	0.031	0.018	0.880		0.005	General
1-0	Scattered Tree	vriv0055	Endangered	1	no	0.200	0.070	0.070	0.150		0.012	General
1-0	Scattered Tree	vriv0055	Endangered	0	no	0.200	0.031	0.031	0.190		0.006	General
1-0	Scattered Tree	vriv0055	Endangered	0	no	0.200	0.031	0.026	0.760		0.007	General
1-0	Scattered Tree	vriv0055	Endangered	0	no	0.200	0.031	0.031	0.760		0.008	General
1-1	Scattered Tree	vriv0055	Endangered	0	no	0.200	0.031	0.031	0.190		0.006	General
1-1	Scattered Tree	vriv0055	Endangered	0	no	0.200	0.031	0.031	0.190		0.006	General

Information provided by or on behalf of the applicant in a GIS file							Information calculated by EnSym					
Zone	Type	BioEVC	BioEVC conservation status	Large tree(s)	Partial removal	Condition score	Polygon Extent	Extent without overlap	SBV score	HI score	Habitat units	Offset type
1-0	Scattered Tree	vriv0055	Endangered	0	no	0.200	0.031	0.030	0.650		0.007	General
1-0	Scattered Tree	vriv0055	Endangered	0	no	0.200	0.031	0.019	0.180		0.003	General
1-0	Scattered Tree	vriv0055	Endangered	0	no	0.200	0.031	0.021	0.180		0.004	General
1-0	Scattered Tree	vriv0055	Endangered	1	no	0.200	0.070	0.064	0.180		0.011	General
1-0	Scattered Tree	vriv0055	Endangered	0	no	0.200	0.031	0.031	0.469		0.007	General
1-0	Scattered Tree	vriv0055	Endangered	0	no	0.200	0.031	0.031	0.740		0.008	General
1-0	Scattered Tree	vriv0055	Endangered	0	no	0.200	0.031	0.031	0.583		0.007	General
1-0	Scattered Tree	vriv0055	Endangered	1	no	0.200	0.070	0.070	0.620		0.017	General
1-0	Scattered Tree	vriv0055	Endangered	0	no	0.200	0.031	0.031	0.620		0.008	General
1-0	Scattered Tree	vriv0055	Endangered	0	no	0.200	0.031	0.031	0.180		0.005	General
1-0	Scattered Tree	vriv0055	Endangered	0	no	0.200	0.031	0.031	0.180		0.005	General
1-0	Scattered Tree	vriv0055	Endangered	0	no	0.200	0.031	0.031	0.710		0.008	General
1-1	Scattered Tree	vriv0055	Endangered	0	no	0.200	0.031	0.031	0.660		0.008	General
1-1	Scattered Tree	vriv0292	Endangered	0	no	0.200	0.031	0.031	0.760		0.008	General
1-1	Scattered Tree	cvu_0175	Endangered	0	no	0.200	0.031	0.031	0.720		0.008	General

Information provided by or on behalf of the applicant in a GIS file							Information calculated by EnSym					
Zone	Type	BioEVC	BioEVC conservation status	Large tree(s)	Partial removal	Condition score	Polygon Extent	Extent without overlap	SBV score	HI score	Habitat units	Offset type
1-1	Scattered Tree	hnf_0023	Endangered	1	no	0.200	0.070	0.070	0.200		0.013	General
1-1	Scattered Tree	cvu_0047	Endangered	0	no	0.200	0.031	0.020	0.850		0.006	General
1-0	Scattered Tree	cvu_0047	Endangered	0	no	0.200	0.031	0.016	0.850		0.004	General
1-1	Scattered Tree	cvu_0047	Endangered	0	no	0.200	0.031	0.027	0.850		0.007	General
1-1	Scattered Tree	cvu_0047	Endangered	0	no	0.200	0.031	0.023	0.880		0.007	General
1-1	Scattered Tree	cvu_0047	Endangered	0	no	0.200	0.031	0.023	0.880		0.007	General
1-1	Scattered Tree	cvu_0047	Endangered	0	no	0.200	0.031	0.031	0.880		0.009	General
1-1	Scattered Tree	cvu_0047	Endangered	0	no	0.200	0.031	0.031	0.540		0.007	General
1-hz09	Patch	cvu_0061	Vulnerable	0	no	0.410	0.048	0.048	0.695		0.025	General
1-hz07	Patch	cvu_0061	Vulnerable	0	no	0.380	0.017	0.017	0.726		0.008	General
1-Hz08	Patch	cvu_0061	Vulnerable	0	no	0.400	0.060	0.060	0.740		0.032	General
1-Hz07	Patch	cvu_0061	Vulnerable	0	no	0.380	0.028	0.028	0.770		0.014	General
1-Hz07	Patch	cvu_0061	Vulnerable	0	no	0.380	0.003	0.003	0.745		0.001	General
1-Hz06	Patch	cvu_0061	Vulnerable	0	no	0.350	0.053	0.053	0.770		0.025	General
1-Hz07	Patch	cvu_0061	Vulnerable	0	no	0.380	0.000	0.000	0.770		0.000	General

Information provided by or on behalf of the applicant in a GIS file							Information calculated by EnSym					
Zone	Type	BioEVC	BioEVC conservation status	Large tree(s)	Partial removal	Condition score	Polygon Extent	Extent without overlap	SBV score	HI score	Habitat units	Offset type
1-Hz06	Patch	cvu_0061	Vulnerable	0	no	0.350	0.017	0.017	0.770		0.008	General
1-Hz06 b	Patch	cvu_0061	Vulnerable	0	no	0.400	0.122	0.122	0.758		0.064	General
1-Hz07	Patch	cvu_0061	Vulnerable	0	no	0.380	0.018	0.018	1.000		0.010	General
1-HZ10	Patch	cvu_0061	Vulnerable	2	no	0.500	0.252	0.252	0.915		0.181	General
1-Hz14 grassy disturbed area	Patch	cvu_0061	Vulnerable	0	no	0.300	0.002	0.002	0.533		0.001	General
1-HZ19	Patch	vriv0055	Vulnerable	0	no	0.350	0.035	0.035	0.758		0.016	General
1-HZ21	Patch	cvu_0055	Endangered	0	no	0.440	0.010	0.010	0.534		0.005	General
1-hz25	Patch	vriv0055	Vulnerable	0	no	0.280	0.008	0.008	0.550		0.003	General
1-HZ26	Patch	cvu_0068	Endangered	0	no	0.280	0.013	0.013	0.600		0.004	General
1-HZ38	Patch	vriv0803	Endangered	0	no	0.340	0.148	0.148	0.121		0.042	General
1-HZ38	Patch	vriv0803	Endangered	0	no	0.340	0.052	0.052	0.412		0.019	General
1-HZ40	Patch	vriv0803	Endangered	0	no	0.500	0.008	0.008	0.820		0.006	General

Information provided by or on behalf of the applicant in a GIS file							Information calculated by EnSym					
Zone	Type	BioEVC	BioEVC conservation status	Large tree(s)	Partial removal	Condition score	Polygon Extent	Extent without overlap	SBV score	HI score	Habitat units	Offset type
1-HZ43	Patch	vriv0803	Endangered	0	no	0.270	0.003	0.003	0.360		0.001	General
1-HZ42	Patch	vriv0803	Endangered	0	no	0.230	0.002	0.002	0.390		0.000	General
1-HZ54	Patch	vriv0175_61	Endangered	0	no	0.440	0.002	0.002	0.400		0.001	General
1-HZ54	Patch	vriv0175_61	Endangered	0	no	0.440	0.000	0.000	0.400		0.000	General
1-HZ55	Patch	vriv0175_61	Endangered	0	no	0.350	0.002	0.002	0.480		0.001	General
1-HZ57	Patch	vriv0175_61	Endangered	0	no	0.490	0.102	0.102	0.477		0.055	General
1-HZ60	Patch	vriv0803	Endangered	0	no	0.180	0.009	0.009	0.120		0.001	General
1-HZ67	Patch	vriv0803	Endangered	0	no	0.460	0.029	0.029	0.680		0.017	General
1-HZ6	Patch	vriv0055	Vulnerable	0	no	0.270	0.084	0.084	0.190		0.020	General
1-HZ6	Patch	vriv0055	Vulnerable	0	no	0.270	0.002	0.002	0.190		0.000	General
1-HZ4	Patch	vriv0055	Vulnerable	0	no	0.310	0.038	0.038	0.340		0.012	General
1-HZ3	Patch	vriv0055	Vulnerable	0	no	0.360	0.003	0.003	0.340		0.001	General
1-HZ7	Patch	vriv0055	Vulnerable	0	no	0.367	0.148	0.148	0.280		0.052	General
1-TA3b	Patch	vriv0055	Vulnerable	0	no	0.350	0.042	0.042	0.140		0.013	General

Information provided by or on behalf of the applicant in a GIS file							Information calculated by EnSym					
Zone	Type	BioEVC	BioEVC conservation status	Large tree(s)	Partial removal	Condition score	Polygon Extent	Extent without overlap	SBV score	HI score	Habitat units	Offset type
1-TA03c	Patch	vriv0055	Vulnerable	0	no	0.350	0.098	0.098	0.145		0.029	General
1-TA3d	Patch	vriv0055	Vulnerable	0	no	0.320	0.036	0.036	0.150		0.010	General
1-HZ8	Patch	vriv0175_61	Endangered	0	no	0.300	0.006	0.006	0.290		0.002	General
1-HZ1	Patch	vriv0175_61	Endangered	0	no	0.440	0.018	0.018	0.290		0.008	General
1-HZ2	Patch	vriv0175_61	Endangered	0	no	0.300	0.001	0.001	0.312		0.000	General
1-HZ1a	Patch	vriv0175_61	Endangered	0	no	0.260	0.005	0.005	0.470		0.001	General
1-hz9	Patch	vriv0055	Vulnerable	1	no	0.370	0.111	0.111	0.240		0.038	General
1-TA1c	Patch	vriv0055	Vulnerable	0	no	0.410	0.027	0.027	0.100		0.009	General
1-TA02c	Patch	vriv0055	Vulnerable	0	no	0.190	0.004	0.004	0.700		0.001	General
1-HZ11	Patch	vriv0055	Vulnerable	0	no	0.200	0.017	0.017	0.199		0.003	General
1-HZ9	Patch	vriv0055	Vulnerable	0	no	0.370	0.021	0.021	0.180		0.007	General
1-MU3a	Patch	vriv0055	Vulnerable	0	no	0.520	0.076	0.076	0.170		0.035	General
1-MU3c	Patch	vriv0055	Vulnerable	0	no	0.530	0.115	0.115	0.170		0.054	General
1-HZ14	Patch	vriv0055	Vulnerable	0	no	0.320	0.067	0.067	0.496		0.024	General

Information provided by or on behalf of the applicant in a GIS file							Information calculated by EnSym					
Zone	Type	BioEVC	BioEVC conservation status	Large tree(s)	Partial removal	Condition score	Polygon Extent	Extent without overlap	SBV score	HI score	Habitat units	Offset type
1-AV1a	Patch	vriv0175_61	Endangered	0	no	0.300	0.001	0.001	0.140		0.000	General
1-AV01b	Patch	vriv0803	Endangered	0	no	0.320	0.004	0.004	0.114		0.001	General
1-AV3a	Patch	vriv0803	Endangered	0	no	0.400	0.117	0.117	0.518		0.053	General
1-AV4a	Patch	vriv0803	Endangered	0	no	0.250	0.002	0.002	0.600		0.000	General
1-AV4b	Patch	vriv0803	Endangered	0	no	0.260	0.007	0.007	0.600		0.002	General
1-AZ5a	Patch	vriv0803	Endangered	0	no	0.250	0.008	0.008	0.520		0.002	General
1-AC5b	Patch	vriv0803	Endangered	0	no	0.240	0.010	0.010	0.520		0.003	General
1-AZ5c	Patch	vriv0803	Endangered	0	no	0.340	0.003	0.003	0.470		0.001	General
1-AV5h	Patch	vriv0803	Endangered	0	no	0.370	0.006	0.006	0.324		0.002	General
1-AZ5l	Patch	vriv0803	Endangered	0	no	0.420	0.035	0.035	1.000		0.022	General
1-AV6a	Patch	vriv0056	Vulnerable	0	no	0.580	0.014	0.014	1.000		0.013	General
1-AZ6C	Patch	vriv0056	Vulnerable	0	no	0.240	0.011	0.011	0.882		0.004	General
1-AZ8a	Patch	vriv0803	Endangered	1	no	0.330	0.069	0.069	0.463		0.025	General
1-AZ9a	Patch	vriv0803	Endangered	1	no	0.480	0.197	0.197	0.459		0.103	General

Information provided by or on behalf of the applicant in a GIS file							Information calculated by EnSym					
Zone	Type	BioEVC	BioEVC conservation status	Large tree(s)	Partial removal	Condition score	Polygon Extent	Extent without overlap	SBV score	HI score	Habitat units	Offset type
1-AV10a	Patch	vriv0803	Endangered	0	no	0.400	0.471	0.471	0.454		0.205	General
1-AZ11a	Patch	vriv0803	Endangered	0	no	0.450	0.033	0.033	0.100		0.012	General
1-TA7A	Patch	vriv0055	Vulnerable	0	no	0.550	0.487	0.487	0.342		0.270	General
1-TA8	Patch	vriv0055	Vulnerable	0	no	0.540	0.373	0.373	0.294		0.195	General
1-TA9a	Patch	vriv0125	Endangered	0	no	0.558	0.001	0.001	0.130		0.000	General
1-TA11a	Patch	vriv0055	Vulnerable	0	no	0.380	0.003	0.003	0.100		0.001	General
1-TA12	Patch	vriv0055	Vulnerable	0	no	0.230	0.000	0.000	0.100		0.000	General
1-TA21	Patch	vriv0055	Vulnerable	0	no	0.490	0.100	0.100	0.490		0.055	General
1-TL13a	Patch	vriv0803	Endangered	1	no	0.380	0.025	0.025	0.590		0.011	General
1-TL14a	Patch	vriv0803	Endangered	1	no	0.530	0.093	0.093	0.590		0.059	General
1-TL16a	Patch	vriv0803	Endangered	0	no	0.230	0.000	0.000	0.370		0.000	General
1-Na03d	Patch	vriv0055	Vulnerable	0	no	0.480	0.000	0.000	0.530		0.000	General

Information provided by or on behalf of the applicant in a GIS file							Information calculated by EnSym					
Zone	Type	BioEVC	BioEVC conservation status	Large tree(s)	Partial removal	Condition score	Polygon Extent	Extent without overlap	SBV score	HI score	Habitat units	Offset type
1-Na03e	Patch	vriv0055	Vulnerable	0	no	0.580	0.072	0.072	0.580		0.050	General
1-TA25a	Patch	vriv0055	Vulnerable	0	no	0.400	0.065	0.065	0.570		0.031	General
1-TA30a	Patch	vriv0055	Vulnerable	0	no	0.390	0.044	0.044	0.100		0.014	General
1-TA29a	Patch	vriv0055	Vulnerable	0	no	0.400	0.042	0.042	0.100		0.014	General
1-Na05g	Patch	vriv0055	Vulnerable	0	no	0.290	0.002	0.002	0.520		0.001	General
1-Na04e	Patch	vriv0055	Vulnerable	0	no	0.280	0.006	0.006	0.480		0.002	General
1-Na05h	Patch	vriv0055	Vulnerable	0	no	0.320	0.006	0.006	0.480		0.002	General
1-Na05i	Patch	vriv0055	Vulnerable	0	no	0.320	0.024	0.024	0.471		0.009	General
1-TA31	Patch	vriv0803	Endangered	0	no	0.250	0.000	0.000	0.100		0.000	General
1-TA32	Patch	vriv0803	Endangered	0	no	0.270	0.001	0.001	0.100		0.000	General
1-TA34	Patch	vriv0803	Endangered	0	no	0.350	0.236	0.236	0.110		0.069	General
1-TA35	Patch	vriv0803	Endangered	0	no	0.360	0.034	0.034	0.100		0.010	General

Information provided by or on behalf of the applicant in a GIS file							Information calculated by EnSym					
Zone	Type	BioEVC	BioEVC conservation status	Large tree(s)	Partial removal	Condition score	Polygon Extent	Extent without overlap	SBV score	HI score	Habitat units	Offset type
1-TA36	Patch	vriv0803	Endangered	0	no	0.320	0.000	0.000	0.100		0.000	General
1-Na07 a	Patch	vriv0055	Vulnerable	0	no	0.310	0.003	0.003	0.370		0.001	General
1-Na07 c	Patch	vriv0055	Vulnerable	0	no	0.360	0.160	0.160	0.577		0.068	General
1-Na06 l	Patch	vriv0055	Vulnerable	0	no	0.210	0.015	0.015	0.390		0.003	General
1-AR1 A	Patch	vriv0055	Vulnerable	0	no	0.300	0.043	0.043	0.830		0.018	General
1-AR2 A	Patch	cvu_0055	Endangered	6	no	0.300	0.208	0.208	0.763		0.082	General
1-MA1 a	Patch	vriv0803	Endangered	0	no	0.140	0.004	0.004	0.160		0.001	General
1-AR3 A	Patch	vriv0055	Vulnerable	0	no	0.300	0.000	0.000	0.760		0.000	General
1-4A	Patch	vriv0055	Vulnerable	0	no	0.200	0.004	0.004	0.223		0.001	General
1-MA2 b	Patch	vriv0125	Endangered	0	no	0.340	0.005	0.005	0.140		0.001	General
1-5A	Patch	vriv0055	Vulnerable	1	no	0.500	0.084	0.084	0.217		0.038	General
1-MA3 a	Patch	vriv0803	Endangered	0	no	0.280	0.024	0.024	0.514		0.007	General

Information provided by or on behalf of the applicant in a GIS file							Information calculated by EnSym					
Zone	Type	BioEVC	BioEVC conservation status	Large tree(s)	Partial removal	Condition score	Polygon Extent	Extent without overlap	SBV score	HI score	Habitat units	Offset type
1-MA3 b	Patch	vriv0803	Endangered	0	no	0.550	0.031	0.031	0.774		0.023	General
1-MA3 c	Patch	vriv0803	Endangered	0	no	0.420	0.020	0.020	0.701		0.011	General
1-MA3 d	Patch	vriv0803	Endangered	0	no	0.390	0.016	0.016	0.583		0.007	General
1-14A	Patch	vriv0055	Vulnerable	0	no	0.380	0.144	0.144	0.397		0.057	General
1-MA4 a	Patch	vriv0132	Endangered	0	no	0.300	0.001	0.001	0.424		0.000	General
1-MA4 b	Patch	vriv0132	Endangered	0	no	0.260	0.013	0.013	0.480		0.004	General
1-22A	Patch	vriv0055	Vulnerable	0	no	0.300	0.291	0.291	0.127		0.074	General
1-TA47 a	Patch	vriv0803	Endangered	0	no	0.520	0.089	0.089	0.100		0.038	General
1-MA4 d	Patch	vriv0803	Endangered	0	no	0.340	0.040	0.040	0.100		0.011	General
1-MA4 e	Patch	vriv0803	Endangered	0	no	0.260	0.011	0.011	0.100		0.002	General
1-MA5 a	Patch	vriv0803	Endangered	0	no	0.450	0.208	0.208	0.123		0.079	General

Information provided by or on behalf of the applicant in a GIS file							Information calculated by EnSym					
Zone	Type	BioEVC	BioEVC conservation status	Large tree(s)	Partial removal	Condition score	Polygon Extent	Extent without overlap	SBV score	HI score	Habitat units	Offset type
1-MA6 a	Patch	vriv0821	Depleted	0	no	0.517	0.001	0.001	0.530		0.001	General
1-MA5 b	Patch	vriv0803	Endangered	0	no	0.450	0.043	0.043	0.530		0.022	General
1-MA5 d	Patch	vriv0803	Endangered	0	no	0.490	0.056	0.056	0.152		0.024	General
1-MA5 e	Patch	vriv0803	Endangered	0	no	0.470	0.106	0.106	0.100		0.041	General
1-25A	Patch	vriv0055	Vulnerable	1	no	0.370	0.105	0.105	0.294		0.038	General
1-27B	Patch	vriv0055	Vulnerable	0	no	0.300	0.000	0.000	0.640		0.000	General
1-29A	Patch	vriv0803	Endangered	1	no	0.390	0.182	0.182	0.680		0.089	General
1-34A	Patch	vriv0803	Endangered	0	no	0.280	0.002	0.002	0.180		0.001	General
1-36A	Patch	vriv0803	Endangered	0	no	0.350	0.028	0.028	0.339		0.010	General
1-MUE 2b	Patch	vriv0055	Vulnerable	0	no	0.430	0.024	0.024	0.650		0.013	General
1-MUE 1k	Patch	vriv0055	Vulnerable	0	no	0.410	0.080	0.080	0.190		0.029	General
1-MUE 1l	Patch	vriv0055	Vulnerable	0	no	0.350	0.117	0.117	0.497		0.046	General

Information provided by or on behalf of the applicant in a GIS file							Information calculated by EnSym					
Zone	Type	BioEVC	BioEVC conservation status	Large tree(s)	Partial removal	Condition score	Polygon Extent	Extent without overlap	SBV score	HI score	Habitat units	Offset type
1-MUE 1m	Patch	vriv0055	Vulnerable	0	no	0.380	0.162	0.162	0.760		0.081	General
1-MUE 1n	Patch	vriv0055	Vulnerable	0	no	0.370	0.079	0.079	0.397		0.031	General
1-1B	Patch	vriv0055	Vulnerable	0	no	0.270	0.001	0.001	0.190		0.000	General
1-4B	Patch	vriv0055	Vulnerable	0	no	0.449	0.006	0.006	0.190		0.003	General
1-6A	Patch	vriv0055	Vulnerable	0	no	0.230	0.007	0.007	0.240		0.001	General
1-6B	Patch	vriv0055	Vulnerable	0	no	0.230	0.002	0.002	0.700		0.001	General
1-7A	Patch	vriv0055	Vulnerable	0	no	0.170	0.027	0.027	0.700		0.006	General
1-7B	Patch	vriv0055	Vulnerable	0	no	0.330	0.005	0.005	0.700		0.002	General
1-8A	Patch	vriv0055	Vulnerable	0	no	0.290	0.099	0.099	0.684		0.036	General
1-4E	Patch	vriv0055	Vulnerable	0	no	0.449	0.002	0.002	0.640		0.001	General
1-10A	Patch	vriv0055	Vulnerable	1	no	0.480	0.166	0.166	0.108		0.066	General
1-4I	Patch	vriv0055	Vulnerable	0	no	0.200	0.006	0.006	0.230		0.001	General
1-4J	Patch	vriv0055	Vulnerable	0	no	0.200	0.007	0.007	0.245		0.001	General
1-13A	Patch	vriv0292	Vulnerable	7	no	0.550	0.122	0.122	0.723		0.086	General
1-MUE 1o	Patch	vriv0055	Vulnerable	0	no	0.260	0.129	0.129	0.210		0.031	General
1-MUE 1p	Patch	vriv0055	Vulnerable	0	no	0.360	0.085	0.085	0.210		0.028	General

Information provided by or on behalf of the applicant in a GIS file							Information calculated by EnSym					
Zone	Type	BioEVC	BioEVC conservation status	Large tree(s)	Partial removal	Condition score	Polygon Extent	Extent without overlap	SBV score	HI score	Habitat units	Offset type
1-MUE 1x	Patch	vriv0055	Vulnerable	0	no	0.360	0.135	0.135	0.604		0.059	General
1-MUE 1y	Patch	vriv0055	Vulnerable	0	no	0.170	0.002	0.002	0.650		0.000	General
1-MUE 1z	Patch	vriv0055	Vulnerable	0	no	0.430	0.363	0.363	0.322		0.155	General
1-MUE 1aa	Patch	vriv0055	Vulnerable	0	no	0.340	0.209	0.209	0.672		0.089	General
1-MUE 1ab	Patch	vriv0055	Vulnerable	0	no	0.150	0.002	0.002	0.410		0.000	General
1-MUE 1ac	Patch	vriv0055	Vulnerable	0	no	0.260	0.107	0.107	0.696		0.036	General
1-WA1 c	Patch	vriv0055	Vulnerable	0	no	0.300	0.257	0.257	0.150		0.067	General
1-WA1 d	Patch	vriv0055	Vulnerable	0	no	0.260	0.067	0.067	0.150		0.015	General
1-15B	Patch	vriv0055	Vulnerable	0	no	0.360	0.083	0.083	0.470		0.033	General
1-WA1 e	Patch	vriv0055	Vulnerable	0	no	0.180	0.081	0.081	0.150		0.013	General
1-WA2 a	Patch	vriv0055	Vulnerable	0	no	0.230	0.003	0.003	0.620		0.001	General

Information provided by or on behalf of the applicant in a GIS file							Information calculated by EnSym					
Zone	Type	BioEVC	BioEVC conservation status	Large tree(s)	Partial removal	Condition score	Polygon Extent	Extent without overlap	SBV score	HI score	Habitat units	Offset type
1-WA1f	Patch	vriv0055	Vulnerable	0	no	0.390	0.221	0.221	0.242		0.080	General
1-WA1i	Patch	vriv0055	Vulnerable	0	no	0.410	0.084	0.084	0.150		0.030	General
1-WA3a	Patch	vriv0055	Vulnerable	0	no	0.200	0.000	0.000	0.400		0.000	General
1-21A	Patch	vriv0292	Vulnerable	18	no	0.410	0.802	0.802	0.611		0.397	General
1-WA1j	Patch	vriv0055	Vulnerable	0	no	0.360	0.060	0.060	0.710		0.028	General
1-WA1l	Patch	vriv0055	Vulnerable	0	no	0.370	0.085	0.085	0.820		0.043	General
1-23B	Patch	vriv0292	Vulnerable	0	no	0.220	0.004	0.004	0.700		0.001	General
1-25B	Patch	vriv0292	Vulnerable	1	no	0.430	0.065	0.065	0.700		0.036	General
1-28A	Patch	vriv0055	Vulnerable	1	no	0.330	0.034	0.034	0.410		0.012	General
1-SY18a	Patch	cvu_0055	Endangered	0	no	0.260	0.009	0.009	0.270		0.002	General
1-GL9A	Patch	vriv0821	Depleted	0	no	0.490	0.002	0.002	0.880		0.002	General
1-GL10A	Patch	vriv0055	Vulnerable	0	no	0.260	0.021	0.021	0.418		0.006	General
1-GL12A	Patch	vriv0055	Vulnerable	1	no	0.400	0.052	0.052	0.748		0.027	General

Information provided by or on behalf of the applicant in a GIS file							Information calculated by EnSym					
Zone	Type	BioEVC	BioEVC conservation status	Large tree(s)	Partial removal	Condition score	Polygon Extent	Extent without overlap	SBV score	HI score	Habitat units	Offset type
1-GL13 A	Patch	vriv0055	Vulnerable	2	no	0.430	0.037	0.037	0.764		0.021	General
1-TK1a	Patch	cvu_0175_61	Endangered	0	no	0.500	0.116	0.116	0.620		0.070	General
1-TK1d	Patch	cvu_0175_61	Endangered	0	no	0.570	0.397	0.397	0.554		0.264	General
1-TK1e	Patch	cvu_0175_61	Endangered	0	no	0.480	0.484	0.484	0.668		0.290	General
1-GL16 A	Patch	cvu_0175_61	Endangered	0	no	0.400	0.005	0.005	0.630		0.002	General
1-TK1f	Patch	cvu_0068	Endangered	0	no	0.350	0.130	0.130	0.870		0.064	General
1-TK1g	Patch	cvu_0175_61	Endangered	0	no	0.400	0.197	0.197	0.782		0.105	General
1-GL17 A	Patch	cvu_0175_61	Endangered	0	no	0.500	0.026	0.026	0.630		0.016	General
1-TK1 Ha	Patch	cvu_0175_61	Endangered	0	no	0.200	0.037	0.037	0.620		0.009	General
1-GL17 B	Patch	cvu_0175_61	Endangered	0	no	0.500	0.003	0.003	0.800		0.002	General
1-TK1 H	Patch	cvu_0175_61	Endangered	0	no	0.450	0.317	0.317	0.580		0.169	General
1-GL18 A	Patch	cvu_0175_61	Endangered	4	no	0.480	0.029	0.029	0.800		0.019	General

Information provided by or on behalf of the applicant in a GIS file							Information calculated by EnSym					
Zone	Type	BioEVC	BioEVC conservation status	Large tree(s)	Partial removal	Condition score	Polygon Extent	Extent without overlap	SBV score	HI score	Habitat units	Offset type
1-GL19 A	Patch	cvu_0056	Endangered	7	no	0.630	0.016	0.016	0.795		0.013	General
1-TK1I	Patch	cvu_0175_61	Endangered	0	no	0.480	0.145	0.145	0.544		0.081	General
1-GL20	Patch	cvu_0175_61	Endangered	2	no	0.620	1.084	1.084	0.624		0.818	General
1-TK1J	Patch	cvu_0175_61	Endangered	0	no	0.540	0.820	0.820	0.564		0.520	General
1-TK1K	Patch	cvu_0175_61	Endangered	0	no	0.450	0.453	0.453	0.551		0.237	General
1-TK2a	Patch	cvu_0175_61	Endangered	0	no	0.360	0.046	0.046	0.796		0.022	General
1-TK3a	Patch	cvu_0175_61	Endangered	0	no	0.470	0.337	0.337	0.803		0.214	General
1-TK2b	Patch	cvu_0175_61	Endangered	0	no	0.530	0.005	0.005	0.610		0.003	General
1-GL21 A	Patch	cvu_0056	Endangered	15	no	0.500	0.090	0.090	0.634		0.055	General
1-GL22 A	Patch	cvu_0175_61	Endangered	6	no	0.610	0.104	0.104	0.627		0.078	General
1-GL23 A	Patch	cvu_0175_61	Endangered	0	no	0.460	0.036	0.036	0.650		0.021	General
1-GL24 A	Patch	cvu_0175_61	Endangered	5	no	0.620	0.162	0.162	0.607		0.121	General

Information provided by or on behalf of the applicant in a GIS file							Information calculated by EnSym					
Zone	Type	BioEVC	BioEVC conservation status	Large tree(s)	Partial removal	Condition score	Polygon Extent	Extent without overlap	SBV score	HI score	Habitat units	Offset type
1-GL26 A	Patch	cvu_0068	Endangered	1	no	0.340	0.037	0.037	0.610		0.015	General
1-GL21 B	Patch	cvu_0056	Endangered	4	no	0.530	0.108	0.108	0.520		0.065	General
1-GL28 A	Patch	cvu_0047	Vulnerable	1	no	0.470	0.023	0.023	0.880		0.015	General
1-GL29 A	Patch	cvu_0047	Vulnerable	0	no	0.370	0.004	0.004	0.880		0.002	General
1-GL28 C	Patch	cvu_0047	Vulnerable	2	no	0.470	0.045	0.045	0.880		0.030	General
1-GL30 A	Patch	cvu_0292	Endangered	0	no	0.440	0.003	0.003	0.505		0.002	General
1-GL29 B	Patch	cvu_0047	Vulnerable	0	no	0.370	0.011	0.011	0.540		0.005	General
1-GL31 A	Patch	cvu_0047	Vulnerable	0	no	0.320	0.055	0.055	0.505		0.020	General
1-GL32 A	Patch	cvu_0132	Endangered	0	no	0.290	0.015	0.015	0.480		0.005	General
1-GL31 B	Patch	cvu_0047	Vulnerable	0	no	0.320	0.010	0.010	0.473		0.004	General

Information provided by or on behalf of the applicant in a GIS file							Information calculated by EnSym					
Zone	Type	BioEVC	BioEVC conservation status	Large tree(s)	Partial removal	Condition score	Polygon Extent	Extent without overlap	SBV score	HI score	Habitat units	Offset type
1-GL32 B	Patch	cvu_0132	Endangered	0	no	0.290	0.000	0.000	0.515		0.000	General
1-GL31 C	Patch	cvu_0047	Vulnerable	0	no	0.320	0.003	0.003	0.600		0.001	General
1-GL32 C	Patch	cvu_0132	Endangered	0	no	0.290	0.005	0.005	0.600		0.002	General
1-GL31 E	Patch	cvu_0047	Vulnerable	0	no	0.320	0.008	0.008	0.555		0.003	General
1-GL31 D	Patch	cvu_0047	Vulnerable	0	no	0.320	0.011	0.011	0.522		0.004	General
1-GL33 A	Patch	cvu_0047	Vulnerable	2	no	0.610	0.092	0.092	0.513		0.064	General
1-WA4 B	Patch	cvu_0821	Endangered	0	no	0.299	0.001	0.001	0.490		0.000	General
1-WA5 F	Patch	cvu_0047	Vulnerable	0	no	0.210	0.050	0.050	0.209		0.010	General
1-WA9 A	Patch	cvu_0047	Vulnerable	0	no	0.440	0.028	0.028	0.200		0.011	General
1-WA5 G	Patch	cvu_0047	Vulnerable	0	no	0.210	0.002	0.002	0.200		0.000	General

Information provided by or on behalf of the applicant in a GIS file							Information calculated by EnSym					
Zone	Type	BioEVC	BioEVC conservation status	Large tree(s)	Partial removal	Condition score	Polygon Extent	Extent without overlap	SBV score	HI score	Habitat units	Offset type
1-WA1 0A	Patch	cvu_0127	Vulnerable	1	no	0.410	0.188	0.188	0.301		0.075	General
1-WA1 0B	Patch	cvu_0127	Vulnerable	0	no	0.420	0.149	0.149	0.305		0.061	General
1-WA1 0D	Patch	cvu_0127	Vulnerable	0	no	0.400	0.006	0.006	0.500		0.003	General
1-WA1 1B	Patch	cvu_0127	Vulnerable	0	no	0.270	0.013	0.013	0.548		0.004	General
1-WA6 D	Patch	cvu_0127	Vulnerable	1	no	0.590	0.068	0.068	0.531		0.046	General
1-WA7 C	Patch	cvu_0023	Depleted	0	no	0.390	0.045	0.045	0.577		0.021	General
1-WA1 2A	Patch	cvu_0023	Depleted	0	no	0.490	0.020	0.020	0.790		0.013	General
1-WA1 6C	Patch	cvu_0047	Vulnerable	1	no	0.500	0.086	0.086	0.630		0.052	General
1-WA1 5C	Patch	cvu_0047	Vulnerable	0	no	0.290	0.041	0.041	0.520		0.014	General
1-WA1 5D	Patch	cvu_0047	Vulnerable	0	no	0.280	0.036	0.036	0.520		0.012	General

Information provided by or on behalf of the applicant in a GIS file							Information calculated by EnSym					
Zone	Type	BioEVC	BioEVC conservation status	Large tree(s)	Partial removal	Condition score	Polygon Extent	Extent without overlap	SBV score	HI score	Habitat units	Offset type
1-WA1 6E	Patch	cvu_0047	Vulnerable	2	no	0.370	0.077	0.077	0.612		0.035	General
1-WA1 5E	Patch	cvu_0047	Vulnerable	0	no	0.280	0.005	0.005	0.590		0.002	General
1-WA1 5F	Patch	cvu_0047	Vulnerable	0	no	0.280	0.038	0.038	0.590		0.013	General
1-WA1 5G	Patch	cvu_0047	Vulnerable	0	no	0.280	0.003	0.003	0.430		0.001	General
1-WA1 7B	Patch	cvu_0083	Endangered	0	no	0.410	0.055	0.055	0.630		0.028	General
1-WA4 C	Patch	cvu_0083	Endangered	0	no	0.230	0.055	0.055	0.690		0.016	General
1-WA1 6D	Patch	cvu_0047	Vulnerable	3	no	0.500	0.204	0.204	0.748		0.134	General
1-WL1 A	Patch	cvu_0083	Endangered	1	no	0.460	0.135	0.135	0.748		0.081	General
1-WA1 6G	Patch	cvu_0047	Vulnerable	0	no	0.400	0.000	0.000	0.630		0.000	General
1-WL1 B	Patch	vvp_0083	Endangered	2	no	0.480	0.016	0.016	0.760		0.010	General

Information provided by or on behalf of the applicant in a GIS file							Information calculated by EnSym					
Zone	Type	BioEVC	BioEVC conservation status	Large tree(s)	Partial removal	Condition score	Polygon Extent	Extent without overlap	SBV score	HI score	Habitat units	Offset type
1-WA2 B	Patch	vvp_0083	Endangered	0	no	0.230	0.000	0.000	0.700		0.000	General
1-WL1 OG	Patch	vvp_0821	Endangered	0	no	0.286	0.001	0.001	0.570		0.000	General
1-WL1 OF	Patch	vvp_0821	Endangered	0	no	0.286	0.002	0.002	0.370		0.000	General
1-NW0 9	Patch	vriv0056	Vulnerable	0	no	0.600	0.964	0.964	0.728		0.749	General
1-NW0 1	Patch	vriv0056	Vulnerable	0	no	0.600	0.006	0.006	0.270		0.003	General
1-WN4 a	Patch	vvp_0083	Endangered	10	no	0.540	0.001	0.001	0.410		0.001	General
1-BF02 b	Patch	cvu_0292	Endangered	0	no	0.280	0.030	0.030	0.420		0.009	General
1-BF06 a	Patch	cvu_0175_61	Endangered	13	no	0.850	0.107	0.107	0.578		0.108	General
1-BF07 a	Patch	cvu_0175_61	Endangered	10	no	0.550	0.044	0.044	0.554		0.029	General
1-TR01 a	Patch	cvu_0055	Endangered	9	no	0.610	1.607	1.607	0.720		1.265	General

Information provided by or on behalf of the applicant in a GIS file							Information calculated by EnSym					
Zone	Type	BioEVC	BioEVC conservation status	Large tree(s)	Partial removal	Condition score	Polygon Extent	Extent without overlap	SBV score	HI score	Habitat units	Offset type
1-TR01 b	Patch	cvu_0055	Endangered	5	no	0.650	0.366	0.366	0.647		0.294	General
1-TK01 b	Patch	cvu_0175_61	Endangered	0	no	0.600	0.065	0.065	0.522		0.045	General
1-WL1 2A	Patch	vriv0125	Endangered	0	no	0.300	0.031	0.031	0.760		0.012	General
1-WL1 3A	Patch	vriv0125	Endangered	0	no	0.141	0.049	0.049	0.595		0.008	General
1-WL1 4A	Patch	vriv0125	Endangered	0	no	0.829	0.015	0.015	0.480		0.014	General
1-WL1 5A	Patch	vriv0125	Endangered	0	no	0.829	0.055	0.055	0.475		0.050	General
1-WL1 6A	Patch	vriv0125	Endangered	0	no	0.209	0.037	0.037	0.523		0.009	General
1-25/06 /19-1b	Patch	cvu_0175_61	Endangered	0	no	0.340	0.078	0.078	0.620		0.032	General
1-GL18 A	Patch	cvu_0175_61	Endangered	1	no	0.480	0.024	0.024	0.800		0.015	General
1-HZ1	Patch	vriv0175_61	Endangered	1	no	0.440	0.011	0.011	0.500		0.005	General
1-AZ18	Patch	vriv0803	Endangered	0	no	0.150	0.000	0.000	0.540		0.000	General

Information provided by or on behalf of the applicant in a GIS file							Information calculated by EnSym					
Zone	Type	BioEVC	BioEVC conservation status	Large tree(s)	Partial removal	Condition score	Polygon Extent	Extent without overlap	SBV score	HI score	Habitat units	Offset type
1-25/06/19-1	Patch	cvu_0175_61	Endangered	0	no	0.340	0.007	0.007	0.510		0.003	General
1-24/06/19-1	Patch	vvp_0821	Endangered	0	no	0.260	0.206	0.206	0.465		0.059	General

SCENARIO TESTING

Appendix 2: Information about impacts to rare or threatened species' habitats on site

This table lists all rare or threatened species' habitats mapped at the site.

Species common name	Species scientific name	Species number	Conservation status	Group	Habitat impacted	% habitat value affected
Bush Stone-curlew	<i>Burhinus grallarius</i>	10174	Endangered	Dispersed	Top ranking map	0.0033
Golden Sun Moth	<i>Synemon plana</i>	15021	Critically endangered	Dispersed	Top ranking map	0.0024
Plump Windmill Grass	<i>Chloris ventricosa</i>	500757	Vulnerable	Dispersed	Habitat importance map	0.0020
Euroa Guinea-flower	<i>Hibbertia humifusa subsp. erigens</i>	505083	Vulnerable	Dispersed	Habitat importance map	0.0019
Bent-leaf Wattle	<i>Acacia flexifolia</i>	500035	Rare	Dispersed	Habitat importance map	0.0014
Ridged Water-milfoil	<i>Myriophyllum porcatum</i>	502257	Vulnerable	Dispersed	Habitat importance map	0.0014
Squirrel Glider	<i>Petaurus norfolcensis</i>	11137	Endangered	Dispersed	Habitat importance map	0.0011
Pale Flax-lily	<i>Dianella sp. aff. longifolia (Riverina)</i>	507399	Vulnerable	Dispersed	Habitat importance map	0.0011
Pepper Grass	<i>Panicum laevinode</i>	504808	Vulnerable	Dispersed	Habitat importance map	0.0011
Yellow-tongue Daisy	<i>Brachyscome chrysoglossa</i>	503654	Vulnerable	Dispersed	Habitat importance map	0.0010
Ausfeld's Wattle	<i>Acacia ausfeldii</i>	500013	Vulnerable	Dispersed	Habitat importance map	0.0009
Small Scurf-pea	<i>Cullen parvum</i>	502773	Endangered	Dispersed	Habitat importance map	0.0009
Bush Stone-curlew	<i>Burhinus grallarius</i>	10174	Endangered	Dispersed	Habitat importance map	0.0009
Grey-crowned Babbler	<i>Pomatostomus temporalis temporalis</i>	10443	Endangered	Dispersed	Habitat importance map	0.0009
Stiff Groundsel	<i>Senecio behrianus</i>	503101	Endangered	Dispersed	Habitat importance map	0.0009
Silky Swainson-pea	<i>Swainsona sericea</i>	504946	Vulnerable	Dispersed	Habitat importance map	0.0008
Cottony Cassinia	<i>Cassinia ozothamnoides</i>	501560	Vulnerable	Dispersed	Habitat importance map	0.0008
Superb Parrot	<i>Polytelis swainsonii</i>	10277	Endangered	Dispersed	Habitat importance map	0.0008
Late-flower Flax-lily	<i>Dianella tarda</i>	505085	Vulnerable	Dispersed	Habitat importance map	0.0008

Broom Bitter-pea	<i>Daviesia genistifolia</i> s.s.	503813	Rare	Dispersed	Habitat importance map	0.0008
Painted Honeyeater	<i>Grantiella picta</i>	10598	Vulnerable	Dispersed	Habitat importance map	0.0008
Striped Legless Lizard	<i>Delma impar</i>	12159	Endangered	Dispersed	Habitat importance map	0.0008
Umbrella Grass	<i>Digitaria divaricatissima</i> var. <i>divaricatissima</i>	501045	Vulnerable	Dispersed	Habitat importance map	0.0007
Rosemary Grevillea	<i>Grevillea rosmarinifolia</i> subsp. <i>rosmarinifolia</i>	504066	Rare	Dispersed	Habitat importance map	0.0007
Western Golden-tip	<i>Goodia medicaginea</i>	501518	Rare	Dispersed	Habitat importance map	0.0007
Silky Umbrella-grass	<i>Digitaria ammophila</i>	501041	Vulnerable	Dispersed	Habitat importance map	0.0007
Barking Owl	<i>Ninox connivens connivens</i>	10246	Endangered	Dispersed	Habitat importance map	0.0007
Veiled Fringe-sedge	<i>Fimbristylis velata</i>	501369	Rare	Dispersed	Habitat importance map	0.0007
Jericho Wire-grass	<i>Aristida jerichoensis</i> var. <i>subspinulifera</i>	504631	Endangered	Dispersed	Habitat importance map	0.0007
Brolga	<i>Grus rubicunda</i>	10177	Vulnerable	Dispersed	Habitat importance map	0.0006
Deane's Wattle	<i>Acacia deanei</i> subsp. <i>paucijuga</i>	504201	Rare	Dispersed	Habitat importance map	0.0006
Speckled Warbler	<i>Chthonicola sagittatus</i>	10504	Vulnerable	Dispersed	Habitat importance map	0.0006
Kamarooka Mallee	<i>Eucalyptus froggattii</i>	501279	Rare	Dispersed	Habitat importance map	0.0006
Long Eryngium	<i>Eryngium paludosum</i>	501238	Vulnerable	Dispersed	Habitat importance map	0.0006
Dark Wire-grass	<i>Aristida calycina</i> var. <i>calycina</i>	503630	Rare	Dispersed	Habitat importance map	0.0006
Striped Water-milfoil	<i>Myriophyllum striatum</i>	503869	Vulnerable	Dispersed	Habitat importance map	0.0006
Narrow Goodenia	<i>Goodenia macbarronii</i>	501513	Vulnerable	Dispersed	Habitat importance map	0.0006
Purple Diuris	<i>Diuris punctata</i>	501084	Vulnerable	Dispersed	Habitat importance map	0.0006
Riverina Bitter-cress	<i>Cardamine moirensis</i>	505032	Rare	Dispersed	Habitat importance map	0.0005
Southern Swainson-pea	<i>Swainsona behriana</i>	504944	Rare	Dispersed	Habitat importance map	0.0005
Brown Toadlet	<i>Pseudophryne bibronii</i>	13117	Endangered	Dispersed	Habitat importance map ; special site	0.0005
Slender Club-sedge	<i>Isolepis congrua</i>	501773	Vulnerable	Dispersed	Habitat importance map	0.0005

Golden Sun Moth	<i>Synemon plana</i>	15021	Critically endangered	Dispersed	Habitat importance map	0.0005
Smooth Minuria	<i>Minuria integerrima</i>	502201	Rare	Dispersed	Habitat importance map	0.0005
Matted Flax-lily	<i>Dianella amoena</i>	505084	Endangered	Dispersed	Habitat importance map	0.0005
Velvet Daisy-bush	<i>Olearia pannosa subsp. cardiophylla</i>	502317	Vulnerable	Dispersed	Habitat importance map	0.0005
Fuzzy New Holland Daisy	<i>Vittadinia cuneata var. morrisii</i>	505060	Rare	Dispersed	Habitat importance map	0.0005
Western Silver Wattle	<i>Acacia decora</i>	500027	Vulnerable	Dispersed	Habitat importance map	0.0005
Yarra Gum	<i>Eucalyptus yarraensis</i>	501326	Rare	Dispersed	Habitat importance map	0.0005
Mueller Daisy	<i>Brachyscome muelleroides</i>	500465	Endangered	Dispersed	Habitat importance map	0.0004
Branching Groundsel	<i>Senecio cunninghamii var. cunninghamii</i>	503104	Rare	Dispersed	Habitat importance map	0.0004
Brush-tailed Phascogale	<i>Phascogale tapoatafa</i>	11017	Vulnerable	Dispersed	Habitat importance map	0.0004
Macquarie Perch	<i>Macquaria australasica</i>	4874	Endangered	Dispersed	Habitat importance map	0.0004
Regent Honeyeater	<i>Anthochaera phrygia</i>	10603	Critically endangered	Dispersed	Habitat importance map	0.0004
Crimson Spider-orchid	<i>Caladenia concolor</i>	504347	Endangered	Dispersed	Habitat importance map	0.0004
Delicate Crane's-bill	<i>Geranium sp. 6</i>	505347	Vulnerable	Dispersed	Habitat importance map	0.0004
Northern Sandalwood	<i>Santalum lanceolatum</i>	503005	Endangered	Dispersed	Habitat importance map	0.0004
Lanky Buttons	<i>Leptorhynchus elongatus</i>	501941	Endangered	Dispersed	Habitat importance map	0.0004
Floodplain Fireweed	<i>Senecio campylocarpus</i>	507136	Rare	Dispersed	Habitat importance map	0.0004
Dwarf Brooklime	<i>Gratiola pumilo</i>	503753	Rare	Dispersed	Habitat importance map	0.0004
Southern Pygmy Perch (Murray-Darling lineage)	<i>Nannoperca australis (Murray-Darling lineage)</i>	903231	Vulnerable	Dispersed	Habitat importance map	0.0003
Growling Grass Frog	<i>Litoria raniformis</i>	13207	Endangered	Dispersed	Habitat importance map	0.0003
Trailing Hop-bush	<i>Dodonaea procumbens</i>	501090	Vulnerable	Dispersed	Habitat importance map	0.0003
Spiny Rice-flower	<i>Pimelea spinescens subsp. spinescens</i>	504823	Endangered	Dispersed	Habitat importance map	0.0003

Hairy Tails	<i>Ptilotus erubescens</i>	502825	Vulnerable	Dispersed	Habitat importance map	0.0003
Pale Swamp Everlasting	<i>Coronidium gunnianum</i>	504655	Vulnerable	Dispersed	Habitat importance map	0.0003
Yarran Wattle	<i>Acacia omalophylla</i>	500069	Endangered	Dispersed	Habitat importance map	0.0003
Blue Burr-daisy	<i>Calotis cuneifolia</i>	500594	Rare	Dispersed	Habitat importance map	0.0003
Swift Parrot	<i>Lathamus discolor</i>	10309	Endangered	Dispersed	Habitat importance map	0.0003
Bearded Dragon	<i>Pogona barbata</i>	12177	Vulnerable	Dispersed	Habitat importance map	0.0003
Lewin's Rail	<i>Lewinia pectoralis pectoralis</i>	10045	Vulnerable	Dispersed	Habitat importance map	0.0003
Waterbush	<i>Myoporum montanum</i>	502240	Rare	Dispersed	Habitat importance map	0.0003
Golden Cowslips	<i>Diuris behrii</i>	501061	Vulnerable	Dispersed	Habitat importance map	0.0003
Rye Beetle-grass	<i>Tripogon loliiformis</i>	503455	Rare	Dispersed	Habitat importance map	0.0002
Square-tailed Kite	<i>Lophoictinia isura</i>	10230	Vulnerable	Dispersed	Habitat importance map	0.0002
Black Falcon	<i>Falco subniger</i>	10238	Vulnerable	Dispersed	Habitat importance map ; special site	0.0002
Grey Grass-tree	<i>Xanthorrhoea glauca subsp. angustifolia</i>	507229	Endangered	Dispersed	Habitat importance map	0.0002
Clover Glycine	<i>Glycine latrobeana</i>	501456	Vulnerable	Dispersed	Habitat importance map	0.0002
Dwarf Bitter-cress	<i>Rorippa eustylis</i>	502944	Rare	Dispersed	Habitat importance map	0.0002
Buloke	<i>Allocasuarina luehmannii</i>	500678	Endangered	Dispersed	Habitat importance map	0.0002
Dookie Daisy	<i>Brachyscome gracilis</i>	505494	Vulnerable	Dispersed	Habitat importance map	0.0002
Chestnut-rumped Heathwren	<i>Calamanthus pyrrhopygius</i>	10498	Vulnerable	Dispersed	Habitat importance map	0.0002
Forest Bitter-cress	<i>Cardamine papillata</i>	505034	Vulnerable	Dispersed	Habitat importance map	0.0002
Australian Painted Snipe	<i>Rostratula australis</i>	10170	Critically endangered	Dispersed	Habitat importance map	0.0002
Large-flower Crane's-bill	<i>Geranium sp. 1</i>	505342	Endangered	Dispersed	Habitat importance map	0.0001
Buloke Mistletoe	<i>Amyema linophylla subsp. orientalis</i>	500217	Vulnerable	Dispersed	Habitat importance map	0.0001
Carpet Python	<i>Morelia spilota metcalfei</i>	62969	Endangered	Dispersed	Habitat importance map	0.0001

Baillon's Crake	<i>Porzana pusilla palustris</i>	10050	Vulnerable	Dispersed	Habitat importance map	0.0001
Slender Stylewort	<i>Levenhookia sonderi</i>	501998	Rare	Dispersed	Habitat importance map	0.0001
Australasian Shoveler	<i>Anas rhynchotis</i>	10212	Vulnerable	Dispersed	Habitat importance map	0.0001
Hardhead	<i>Aythya australis</i>	10215	Vulnerable	Dispersed	Habitat importance map	0.0001
Silver Perch	<i>Bidyanus bidyanus</i>	528544	Vulnerable	Dispersed	Habitat importance map	0.0001
Lace Monitor	<i>Varanus varius</i>	12283	Endangered	Dispersed	Habitat importance map	0.0001
Emerald-lip Greenhood	<i>Pterostylis smaragdina</i>	503915	Rare	Dispersed	Habitat importance map	0.0001
Pale-flower Crane's-bill	<i>Geranium sp. 3</i>	505344	Rare	Dispersed	Habitat importance map	0.0001
Small-leaf Bush-pea	<i>Pultenaea foliolosa</i>	502848	Rare	Dispersed	Habitat importance map	0.0001
Water Shield	<i>Brasenia schreberi</i>	500487	Vulnerable	Dispersed	Habitat importance map	0.0001
Dwarf Cassinia	<i>Cassinia diminuta</i>	507664	Rare	Dispersed	Habitat importance map	0.0001
White-throated Needletail	<i>Hirundapus caudacutus</i>	10334	Vulnerable	Dispersed	Habitat importance map	0.0001
Australian Little Bittern	<i>Ixobrychus dubius</i>	10195	Endangered	Dispersed	Habitat importance map	0.0001
Eastern Great Egret	<i>Ardea modesta</i>	10187	Vulnerable	Dispersed	Habitat importance map	0.0001
Intermediate Egret	<i>Ardea intermedia</i>	10186	Endangered	Dispersed	Habitat importance map	0.0001
Tufted Club-sedge	<i>Isolepis wakefieldiana</i>	501789	Rare	Dispersed	Habitat importance map	0.0001
Musk Duck	<i>Biziura lobata</i>	10217	Vulnerable	Dispersed	Habitat importance map	0.0001
Downy Swainson-pea	<i>Swainsona swainsonioides</i>	503328	Endangered	Dispersed	Habitat importance map	0.0000
Arching Flax-lily	<i>Dianella sp. aff. longifolia</i> (<i>Benambra</i>)	505560	Vulnerable	Dispersed	Habitat importance map	0.0000
Powerful Owl	<i>Ninox strenua</i>	10248	Vulnerable	Dispersed	Habitat importance map	0.0000
Hairy Hop-bush	<i>Dodonaea boroniifolia</i>	501087	Rare	Dispersed	Habitat importance map	0.0000
Murray River Turtle	<i>Emydura macquarii</i>	5135	Vulnerable	Dispersed	Habitat importance map	0.0000
Flat-headed Galaxias	<i>Galaxias rostratus</i>	4692	Vulnerable	Dispersed	Habitat importance map	0.0000
Freshwater Catfish	<i>Tandanus tandanus</i>	528545	Endangered	Dispersed	Habitat importance map	0.0000

Red Swainson-pea	<i>Swainsona plagiotropis</i>	503324	Endangered	Dispersed	Habitat importance map	0.0000
Slender Darling-pea	<i>Swainsona murrayana</i>	503321	Endangered	Dispersed	Habitat importance map	0.0000
Murray-Darling Rainbowfish	<i>Melanotaenia fluviatilis</i>	4774	Vulnerable	Dispersed	Habitat importance map	0.0000
Grassland Velleia	<i>Velleia arguta</i>	503487	Rare	Dispersed	Habitat importance map	0.0000
Slender Mint-bush	<i>Prostanthera saxicola var. bracteolata</i>	502750	Rare	Dispersed	Habitat importance map	0.0000
Blue-billed Duck	<i>Oxyura australis</i>	10216	Endangered	Dispersed	Habitat importance map	0.0000
Plump Swamp Wallaby-grass	<i>Amphibromus pithogastrus</i>	503624	Endangered	Dispersed	Habitat importance map	0.0000
Murray Cod	<i>Maccullochella peelii</i>	4871	Vulnerable	Dispersed	Habitat importance map	0.0000
Large-headed Fireweed	<i>Senecio macrocarpus</i>	503116	Endangered	Dispersed	Habitat importance map	0.0000
Woolly Wattle	<i>Acacia lanigera var. lanigera</i>	505093	Rare	Dispersed	Habitat importance map	0.0000
Yellow Watercrown Grass	<i>Paspalidium flavidum</i>	507820	Endangered	Dispersed	Habitat importance map	0.0000
Flat-leaf Bush-pea	<i>Pultenaea platyphylla</i>	502865	Rare	Dispersed	Habitat importance map	0.0000
Swamp Everlasting	<i>Xerochrysum palustre</i>	503763	Vulnerable	Dispersed	Habitat importance map	0.0000
Broad-shelled Turtle	<i>Chelodina expansa</i>	5133	Endangered	Dispersed	Habitat importance map	0.0000
Brackish Plains Buttercup	<i>Ranunculus diminutus</i>	504314	Rare	Dispersed	Habitat importance map	0.0000
Curly Sedge	<i>Carex tasmanica</i>	500650	Vulnerable	Dispersed	Habitat importance map	0.0000
Little Egret	<i>Egretta garzetta nigripes</i>	10185	Endangered	Dispersed	Habitat importance map	0.0000
Plains Yam-daisy	<i>Microseris scapigera s.s.</i>	504657	Vulnerable	Dispersed	Habitat importance map	0.0000
Southern Toadlet	<i>Pseudophryne semimarmorata</i>	13125	Vulnerable	Dispersed	Habitat importance map	0.0000
Purple Blown-grass	<i>Lachnagrostis punicea subsp. punicea</i>	504206	Rare	Dispersed	Habitat importance map	0.0000
Swamp Fireweed	<i>Senecio psilocarpus</i>	504659	Vulnerable	Dispersed	Habitat importance map	0.0000
Small Burr-grass	<i>Tragus australianus</i>	503418	Rare	Dispersed	Habitat importance map	0.0000
Tough Scurf-pea	<i>Cullen tenax</i>	502776	Endangered	Dispersed	Habitat importance map	0.0000

Hickory Wattle	<i>Acacia penninervis</i> var. <i>penninervis</i>	500074	Rare	Dispersed	Habitat importance map	0.0000
Spiny Lignum	<i>Duma horrida</i> subsp. <i>horrida</i>	502230	Rare	Dispersed	Habitat importance map	0.0000
Annual Fireweed	<i>Senecio glomeratus</i> subsp. <i>longifructus</i>	507144	Rare	Dispersed	Habitat importance map	0.0000
Gull-billed Tern	<i>Gelochelidon nilotica macrotarsa</i>	10111	Endangered	Dispersed	Habitat importance map	0.0000
Grey Falcon	<i>Falco hypoleucos</i>	10236	Endangered	Dispersed	Habitat importance map	0.0000
Dense Mint-bush	<i>Prostanthera decussata</i>	502739	Rare	Dispersed	Habitat importance map	0.0000
Australasian Bittern	<i>Botaurus poiciloptilus</i>	10197	Endangered	Dispersed	Habitat importance map ; special site	0.0000
Yellow Burr-daisy	<i>Calotis lappulacea</i>	500598	Rare	Dispersed	Habitat importance map	0.0000
White-bellied Sea-Eagle	<i>Haliaeetus leucogaster</i>	10226	Vulnerable	Dispersed	Habitat importance map	0.0000
Tussock Skink	<i>Pseudemoia pagenstecheri</i>	12993	Vulnerable	Dispersed	Habitat importance map	0.0000
Grey Goshawk	<i>Accipiter novaehollandiae novaehollandiae</i>	10220	Vulnerable	Dispersed	Habitat importance map	0.0000
Small Milkwort	<i>Comesperma polygaloides</i>	500798	Vulnerable	Dispersed	Habitat importance map	0.0000
Grey-headed Flying-fox	<i>Pteropus poliocephalus</i>	11280	Vulnerable	Dispersed	Habitat importance map	0.0000
One-flower Early Nancy	<i>Wurmbea uniflora</i>	503583	Rare	Dispersed	Habitat importance map	0.0000
Twiggy Sida	<i>Sida intricata</i>	503143	Vulnerable	Dispersed	Habitat importance map	0.0000
Freckled Duck	<i>Stictonetta naevosa</i>	10214	Endangered	Dispersed	Habitat importance map	0.0000
Common Bent-wing Bat (eastern ssp.)	<i>Miniopterus schreibersii oceanensis</i>	61342	Vulnerable	Dispersed	Habitat importance map	0.0000
Tremont Bundy	<i>Eucalyptus</i> aff. <i>goniocalyx</i> (Dandenong Ranges)	507008	Vulnerable	Dispersed	Habitat importance map	0.0000

Habitat group

- Highly localised habitat means there is 2000 hectares or less mapped habitat for the species
- Dispersed habitat means there is more than 2000 hectares of mapped habitat for the species

Habitat impacted

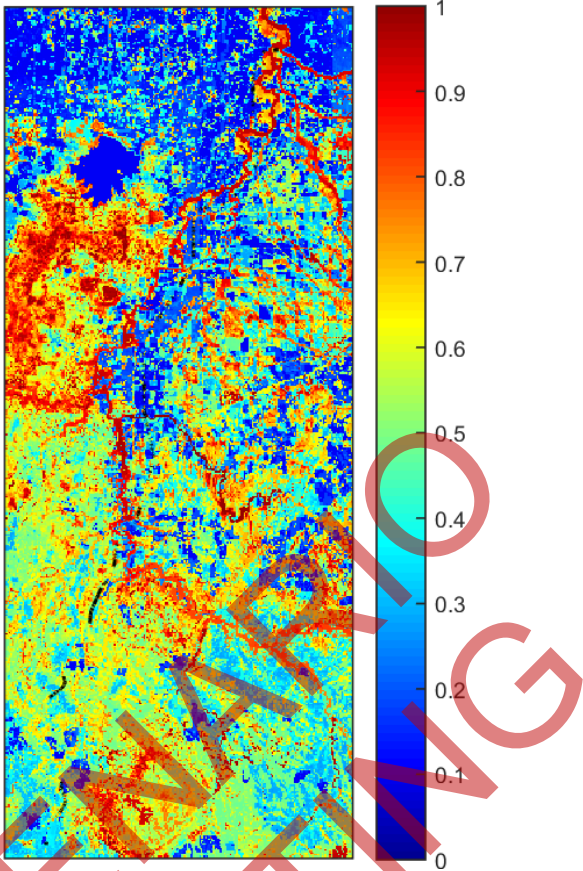
- Habitat importance maps are the maps defined in the Guidelines that include all the mapped habitat for a rare or threatened species

- Top ranking maps are the maps defined in the Guidelines that depict the important areas of a dispersed species habitat, developed from the highest habitat importance scores in dispersed species habitat maps and selected VBA records
- Selected VBA record is an area in Victoria that represents a large population, roosting or breeding site etc.

SCENARIO TESTING

Appendix 3 – Images of mapped native vegetation

2. Strategic biodiversity values map



SCENARIO TESTING

Appendix F

Summary of
Relevant
Legislation

Appendix F - Summary of Relevant Legislation

TABLE F.1 SUMMARY OF LEGISLATION AND POLICY RELEVANT TO THIS ASSESSMENT

LEGISLATION / POLICY	DESCRIPTION
Commonwealth	
<p><i>Environment Protection and Biodiversity Conservation Act 1999</i> (EPBC Act) Part 3 Division 1: Requirements relating to Matters of National Environmental Significance (MNES)</p>	<p>The EPBC Act has significant implications for natural resource and environmental management in Australia and provides for the listing and protection of threatened species, threatened ecological communities and key threatening processes. It also relates to actions likely to have a significant impact on Matters of National Environmental Significance (MNES). There are nine MNES:</p> <ul style="list-style-type: none"> • World Heritage Sites • National Heritage Places • Ramsar Wetlands • Nationally threatened species and ecological communities • Migratory species • Commonwealth marine areas • Nuclear actions • Great Barrier Reef Marine Park • Water resources from coal seam gas development or large coal mining development
<p>EPBC Act Part 10: Strategic Assessments (Melbourne Strategic Assessment; MSA)</p>	<p>The MSA is an agreement between the Commonwealth and Victorian Environment Departments, aimed at streamlining the approvals pathways for developments within the expanded Urban Growth Boundary. Under this agreement, assessment of the majority of biodiversity values listed at a Commonwealth and state level within the area has largely been completed and the required offsets for impacts within the area pre-defined.</p> <p>The MSA combines the management of both Commonwealth and State matters of environmental significance, implemented through the Biodiversity Conservation Strategy (BCS) (DEPI 2013) and various sub-regional species strategies. Where MNES occur within the MSA area, the referral mechanism of the EPBC Act is not triggered and appropriate Habitat Compensation Obligation (HCO) fees are to be paid in advance of the impacting construction activities commencing.</p> <p>Actions that are either outside the MSA program area, or not associated with urban development inside the MSA program area, are subject to Victoria's Native Vegetation Permitted Clearing Regulation under Clause 52.17 of the Planning Schemes and may also trigger the requirements for a referral under Part 7 of the EPBC Act.</p> <p>The BCS identifies land required to be protected from urban development and addresses all Commonwealth Matters of National Environmental Significance (MNES) and State significant matters known (at the time of BCS preparation) to occur within the growth corridors.</p> <p>As relevant to the Project, the threatened species and communities listed under the EPBC Act that have been assessed under the MSA are:</p> <ul style="list-style-type: none"> • The threatened communities Natural Temperate Grassland of the VVP (equivalent to Plains Grassland EVC 132), Seasonal Herbaceous Wetlands (Freshwater) of the Lowlands Plains (can be synonymous with Plains Grassy Wetland EVC 125) and Grassy Eucalypt Woodlands of the VVPs (equivalent to Plains Grassy Woodland EVC 55); • Threatened fauna, including Golden Sun Moth, Striped Legless Lizard, Growling Grass Frog and Migratory-listed species; and • Threatened flora species, including the Matted Flax-lily. <p>The MSA has identified the extent of native vegetation and areas of habitat for threatened species within their strategic assessment (DEPI, 2010). Areas with high biodiversity values have been identified as Conservation Areas to be retained in the Biodiversity Conservation Strategy (DEPI, 2013) whilst important habitats for threatened species have been identified under separate sub-regional strategies. Where projects impact on identified communities, species and appropriate habitat, offsets must be purchased for identified native vegetation and threatened species habitat as outlined in <i>Habitat Compensation under the Biodiversity Conservation Strategy</i> (DEPI, 2013), unless specifically identified.</p>
State	
<p><i>Environment Effects Act 1978</i> (EE Act)</p>	<p>The EE Act provides for the assessment of actions that are capable of having a significant environmental effect.0</p>

LEGISLATION / POLICY	DESCRIPTION
	<p>Actions which might have a significant environmental effect should be referred to the Victorian Minister for Planning, who decides if an Environment Effects Statement (EES) is required. An EES may be required where:</p> <ul style="list-style-type: none"> • There is a likelihood of regionally or state significant adverse environmental effects • There is a need for an integrated assessment of social and economic effects of a project or relevant alternatives • Normal statutory processes would not provide a sufficiently comprehensive, integrated and transparent assessment
<p><i>Planning and Environment Act 1987</i> (P&E Act)</p>	<p>A Planning Scheme Amendment (PSA) will be prepared for this project to introduce an Incorporated Document for securing approval for large scale infrastructure projects. A PSA provides for a coordinated and integrated approval mechanism where there are multiple approval triggers that span across multiple municipalities.</p> <p>Applications to remove, destroy, or lop native vegetation in Victoria invoke relevant municipal planning schemes and the Planning and Environment Act, which are given authority through the Victoria Planning Provisions (VPP).</p> <p>A range of exemptions apply under this Act.</p> <p>Depending on the scale of the native vegetation clearance, statutory referral to DELWP may be required and offsets necessary to be obtained.</p> <p>As relevant to this assessment, overlays intersected by the alignment in each Local Government Area include:</p> <p>Greater Shepparton:</p> <ul style="list-style-type: none"> • Public Acquisition Overlay (POA4, PA07) • Land Subject to Inundation (LSIO) • Bushfire Management Overlay (BMO) <p>Mitchell:</p> <ul style="list-style-type: none"> • Vegetation Protection Overlay (VPO1, VPO2) • Land Subject to Inundation (LSIO) • Environmental Significance Overlay (ESO3) • Erosion Management Overlay (EMO) • Bushfire Management Overlay (BMO) <p>Strathbogrie:</p> <ul style="list-style-type: none"> • Public Acquisition Overlay (POA1) • Land Subject to Inundation (LSIO) <p>Exemptions may apply for Railways or as otherwise stipulated within the Planning Schemes.</p>
<p>Guidelines for the removal, destruction or lopping of native vegetation (the Guideline) (DELWP 2017a)</p>	<p>The purpose of the Guideline is to guide how impacts on biodiversity should be considered when assessing an application for a permit to remove, lop or destroy native vegetation. Within the context of the Guideline, the term 'remove native vegetation' includes to lop, remove or destroy native vegetation.</p>
<p><i>Flora and Fauna Guarantee Act 1988</i> (FFG Act)</p>	<p>The FFG Act provides a framework for biodiversity conservation in Victoria. Threatened species and communities of flora and fauna, as well as threatening processes, are listed under this Act. Non-threatened flora species are also listed as protected under the FFG Act.</p> <p>A Permit to Take is required to remove these species from public land.</p>
<p><i>Catchment and Land Protection Act 1994</i> (CaLP Act)</p>	<p>The CaLP Act defines requirements to:</p> <ul style="list-style-type: none"> • Avoid land degradation; • Conserve soil; • Protect water resources; and • Eradicate and prevent the spread and establishment of noxious weed and pest animal species. <p>The Act defines four categories of noxious weeds: State Prohibited Weeds, Regionally Prohibited Weeds, Regionally Controlled Weeds and Restricted Weeds. Noxious weeds species and the category they are placed in is specific to individual CMA regions.</p>
<p><i>Wildlife Act 1975</i></p>	<p>The <i>Wildlife Act 1975</i> forms the procedural, administrative and operational basis for the protection and conservation of native wildlife within Victoria. This Act often sits as the default reference for other associated legislation and is the basis for most Wildlife permit / licensing requirements within the state.</p>
<p>Department of environment, Land, Water and Planning (DELWP) Victorian Advisory Lists (Vic Adv)</p>	<p>The DELWP Victorian Advisory Lists (VicAdv) are not a statutory list of threatened species, but rather list species for which conservation management is recommended by DELWP. The VicAdv lists are comprised of the Advisory List of Rare or Threatened</p>

LEGISLATION / POLICY	DESCRIPTION
	<p>Plants in Victoria – 2014 (DEPI, 2014), the Advisory List of Threatened Vertebrate Fauna in Victoria – 2013 (DSE, 2013), and the Advisory List of Threatened Invertebrate Fauna in Victoria – 2009 (DSE, 2009).</p> <p>The presence, or likely presence, of a species listed on the VicAdv lists is used to determine whether species specific habitat is required to be offset.</p>

Appendix G

Terrestrial Targeted Survey Mapping

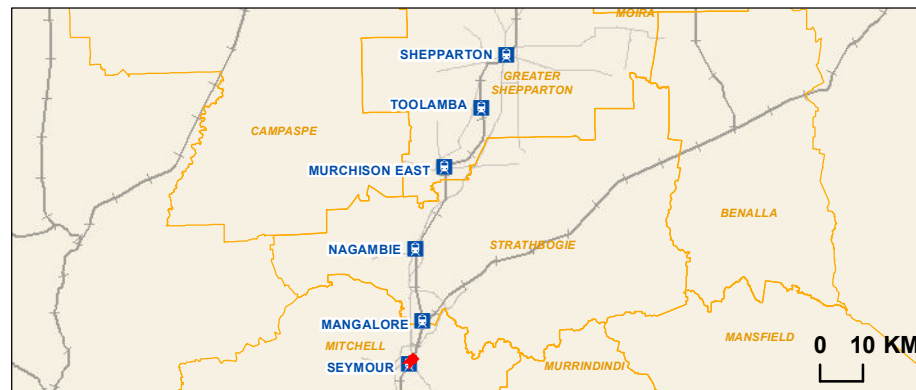




- Rail station
- Railway
- Survey Transect Tile Locations**
- Transect 1
- Transect 2
- Transect 3

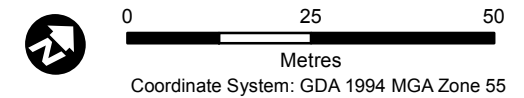
**Map 1 of 3
Transect 1**

Data Sources:
AJM 2018
Vicmap 2018
DELWP 2016








**Regional Rail Revival
North-East & Shepparton**

Striped Legless Lizard Survey Tile Locations			
Drawing Number: NES-AJM-PWD-PWD-MAP-XEV-VIC-0419091		Revision: A.1	
Drawn By: A. Mattinson	Approved By: S. Waller	Date: 13/06/2019	Map Size: A3



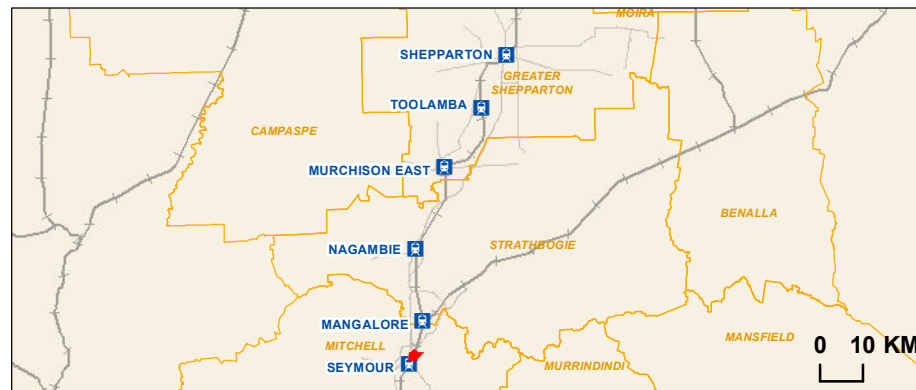


DRAFT & CONFIDENTIAL

-  Rail station
-  Railway
- Survey Transect Tile Locations**
-  Transect 1
-  Transect 2
-  Transect 3

**Map 2 of 3
Transect 2**

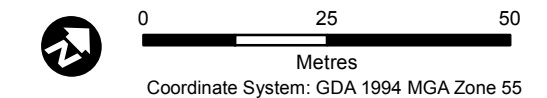
Data Sources:
AJM 2018
Vicmap 2018
DELWP 2016



**Regional Rail Revival
North-East & Shepparton**

Striped Legless Lizard Survey Tile Locations
 Drawing Number: NES-AJM-PWD-PWD-MAP-XEV-VIC-0419091
 Revision: A.1

Drawn By: A. Mattinson	Approved By: S. Waller	Date: 13/06/2019	Map Size: A3
---------------------------	---------------------------	---------------------	-----------------

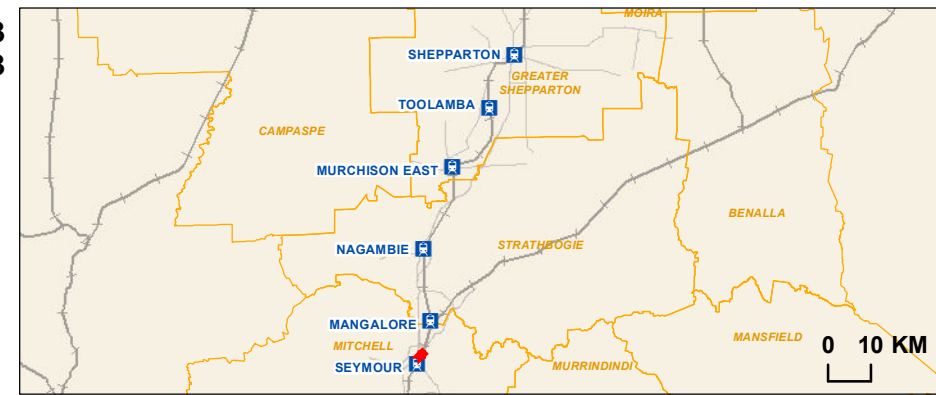




- Rail station
- Railway
- Survey Transect Tile Locations**
- Transect 1
- Transect 2
- Transect 3

**Map 3 of 3
Transect 3**

Data Sources:
AJM 2018
Vicmap 2018
DELWP 2016

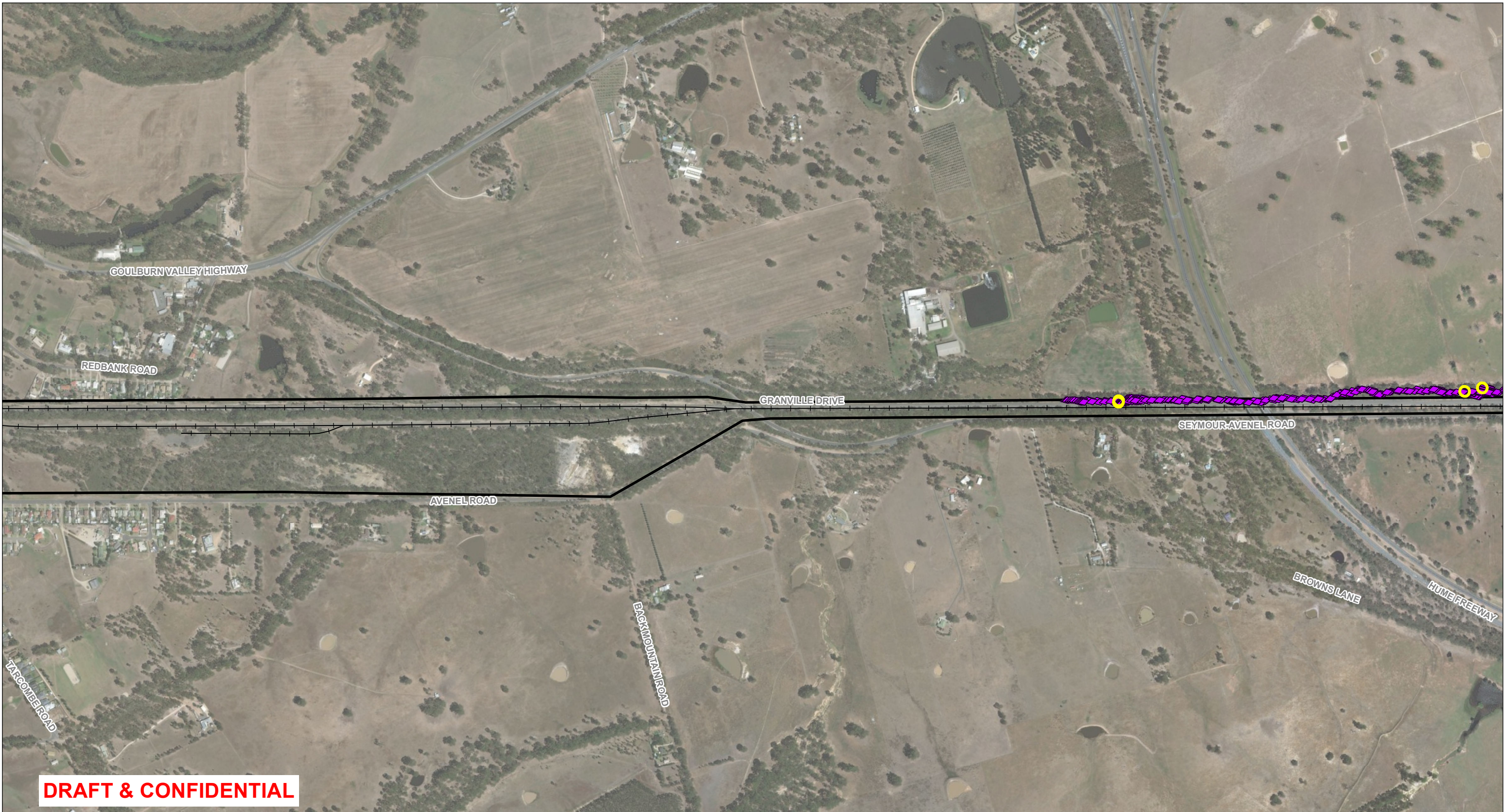


**Regional Rail Revival
North-East & Shepparton**





Striped Legless Lizard Survey Tile Locations

Drawing Number: NES-AJM-PWD-PWD-MAP-XEV-VIC-0419091		Revision: A.1	
Drawn By: A. Mattinson	Approved By: S. Waller	Date: 13/06/2019	Map Size: A3

0 25 50
Metres
Coordinate System: GDA 1994 MGA Zone 55

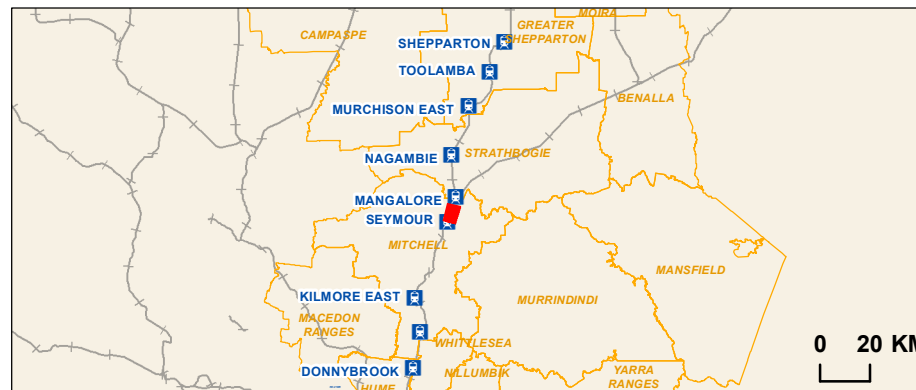


DRAFT & CONFIDENTIAL

-  Rail station
-  Swift Parrot Point Survey
-  Swift Parrot Driving Survey
-  Project Area

Map 1 of 15

Data Sources:
 AJM 2018
 DELWP 2018
 Vicmap 2018
 Basemap: ESRI 2018

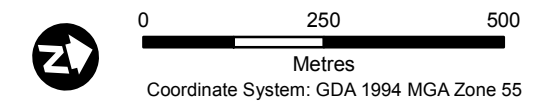


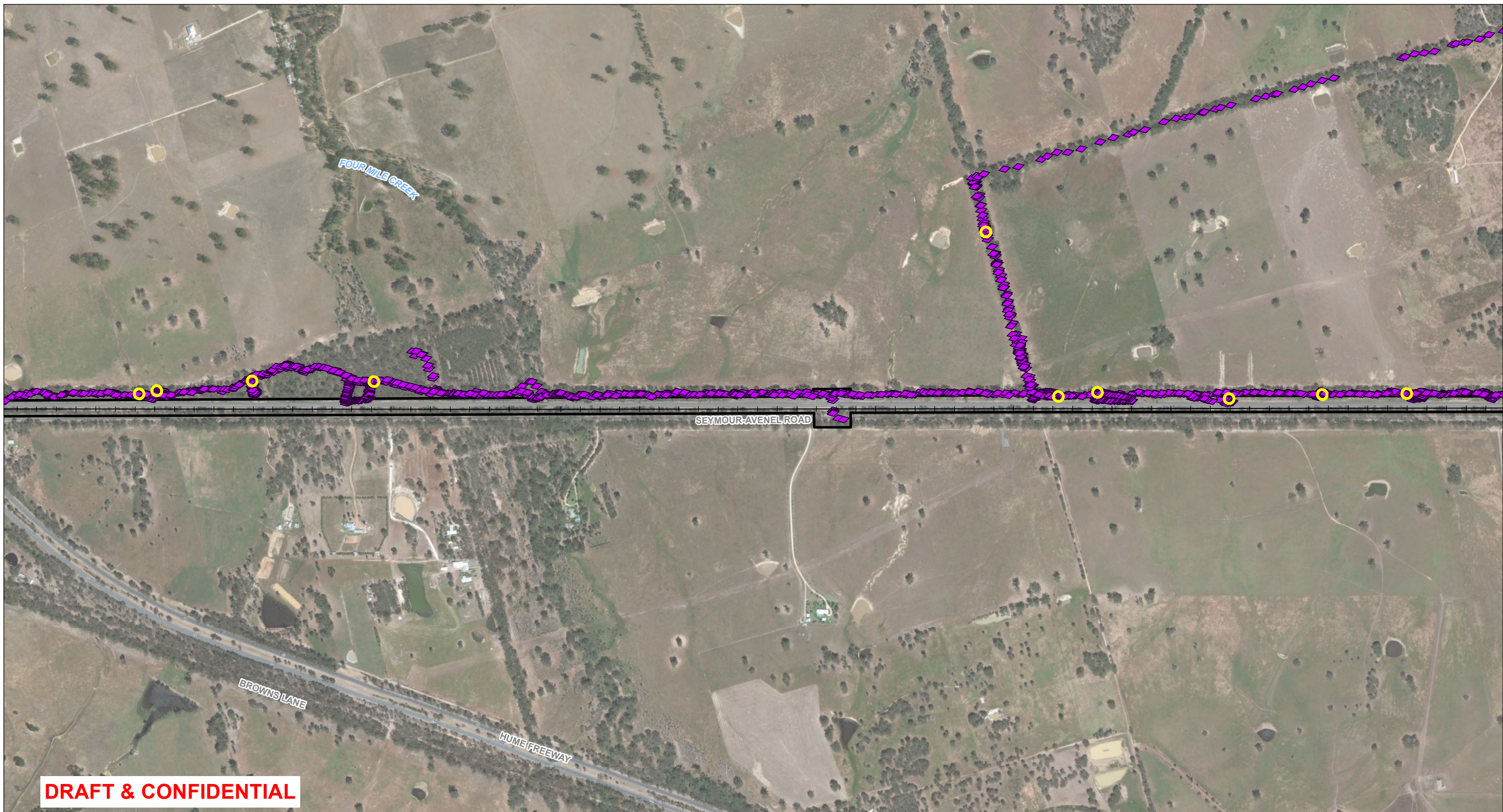
RAIL PROJECTS VICTORIA





AJM Joint Venture
aurecon JACOBS MOTT MACDONALD

Regional Rail Revival North-East & Shepparton
 Swift Parrot Survey Locations

Drawing Number:		Revision:	
NES-AJM-PWD-PWD-MAP-XEV-VIC-0419083		A.1	
Drawn By:	Approved By:	Date:	Map Size:
A. Mattinson	S. Waller	25/09/2019	A3

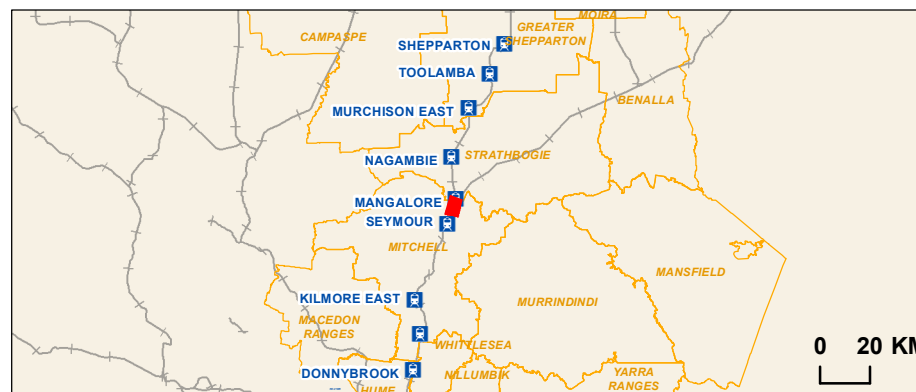




-  Rail station
-  Swift Parrot Point Survey
-  Swift Parrot Driving Survey
-  Project Area

Map 2 of 15

Data Sources:
 AJM 2018
 DELWP 2018
 Vicmap 2018
 Basemap: ESRI 2018



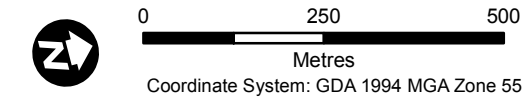
RAIL PROJECTS
 VICTORIA

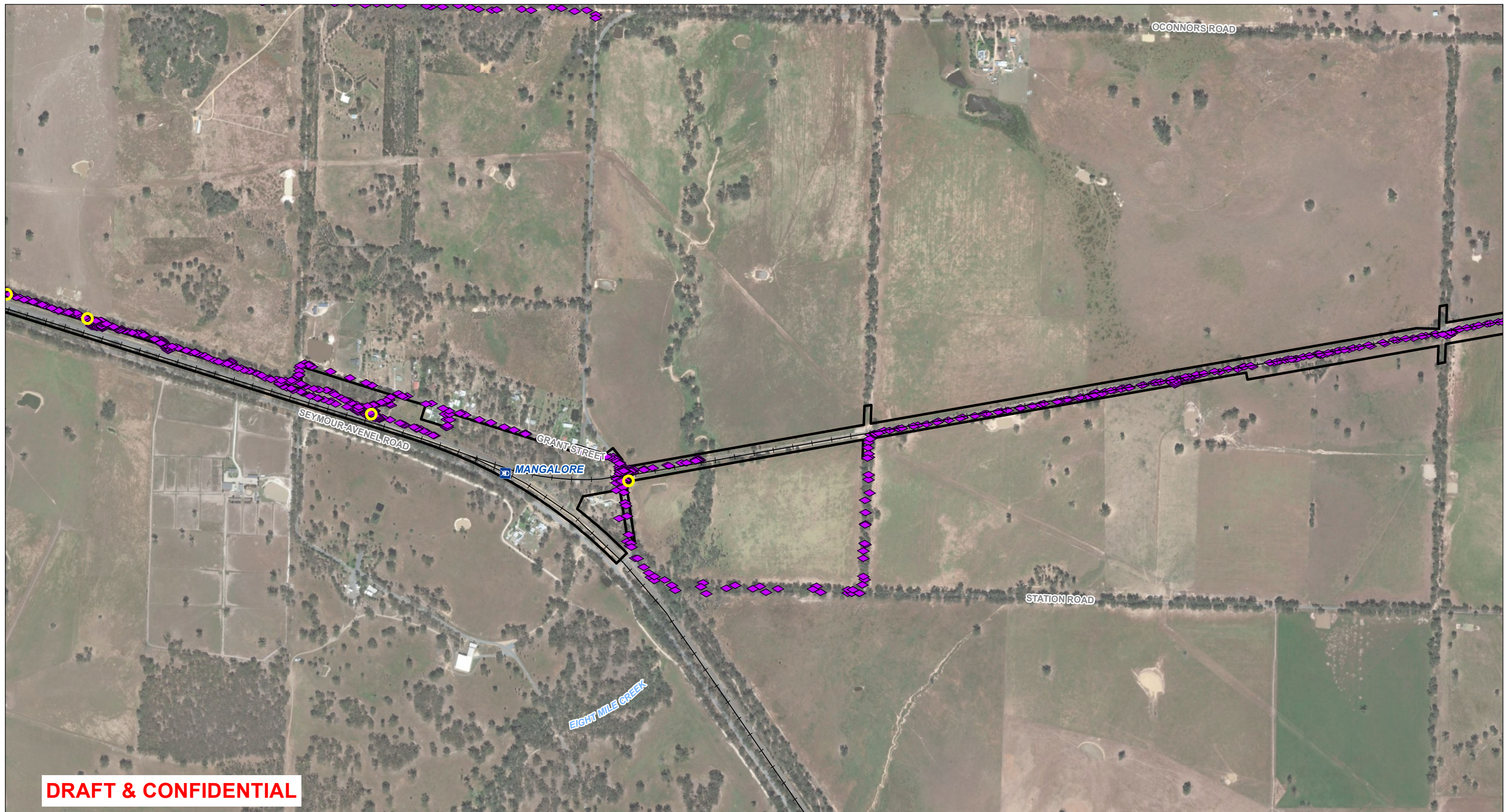
AJM
 Joint Venture

aurecon
JACOBS
 MOTT MACDONALD

Regional Rail Revival
North-East & Shepparton
 Swift Parrot Survey Locations

Drawing Number:		Revision:	
NES-AJM-PWD-PWD-MAP-XEV-VIC-0419083		A.1	
Drawn By:	Approved By:	Date:	Map Size:
A. Mattinson	S. Waller	25/09/2019	A3

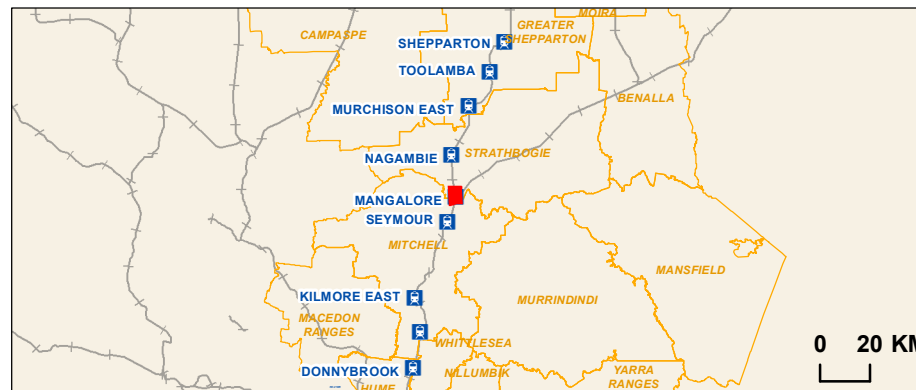




- Rail station
- Swift Parrot Point Survey
- Swift Parrot Driving Survey
- Project Area

Map 3 of 15

Data Sources:
 AJM 2018
 DELWP 2018
 Vicmap 2018
 Basemap: ESRI 2018

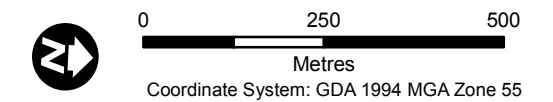


RAIL PROJECTS VICTORIA

AJM Joint Venture
aurecon JACOBS MOTT MACDONALD





**Regional Rail Revival
 North-East & Shepparton**
 Swift Parrot Survey Locations

Drawing Number:		Revision:	
NES-AJM-PWD-PWD-MAP-XEV-VIC-0419083		A.1	
Drawn By:	Approved By:	Date:	Map Size:
A. Mattinson	S. Waller	25/09/2019	A3



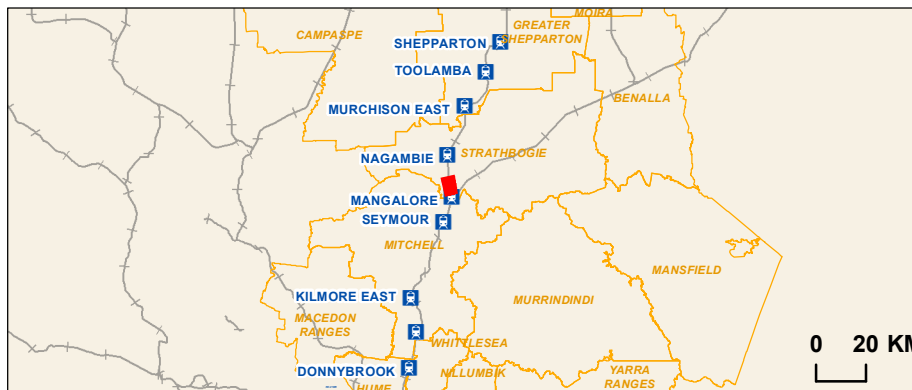


DRAFT & CONFIDENTIAL

-  Rail station
-  Swift Parrot Point Survey
-  Swift Parrot Driving Survey
-  Project Area

Map 4 of 15

Data Sources:
 AJM 2018
 DELWP 2018
 Vicmap 2018
 Basemap: ESRI 2018

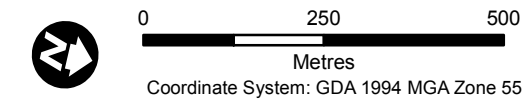


RAIL PROJECTS VICTORIA

AJM Joint Venture
aurecon JACOBS MOTT MACDONALD

Regional Rail Revival North-East & Shepparton
 Swift Parrot Survey Locations

Drawing Number:		Revision:	
NES-AJM-PWD-PWD-MAP-XEV-VIC-0419083		A.1	
Drawn By:	Approved By:	Date:	Map Size:
A. Mattinson	S. Waller	25/09/2019	A3

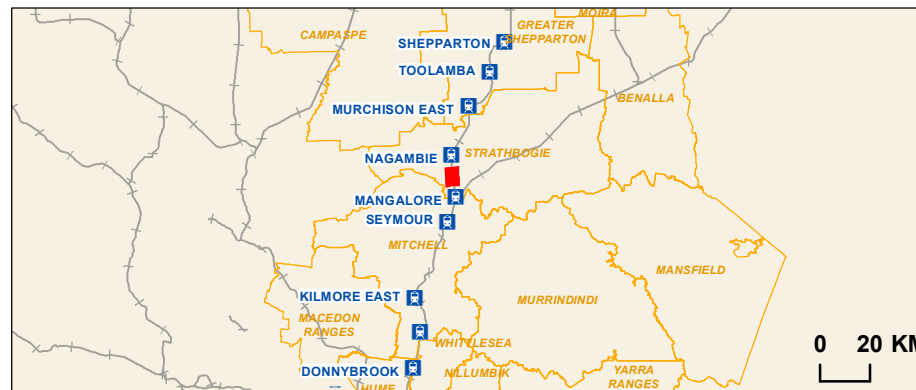




- Rail station
- Swift Parrot Point Survey
- Swift Parrot Driving Survey
- Project Area

Map 5 of 15

Data Sources:
 AJM 2018
 DELWP 2018
 Vicmap 2018
 Basemap: ESRI 2018



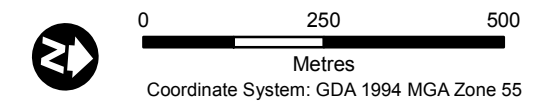
RAIL PROJECTS
 VICTORIA

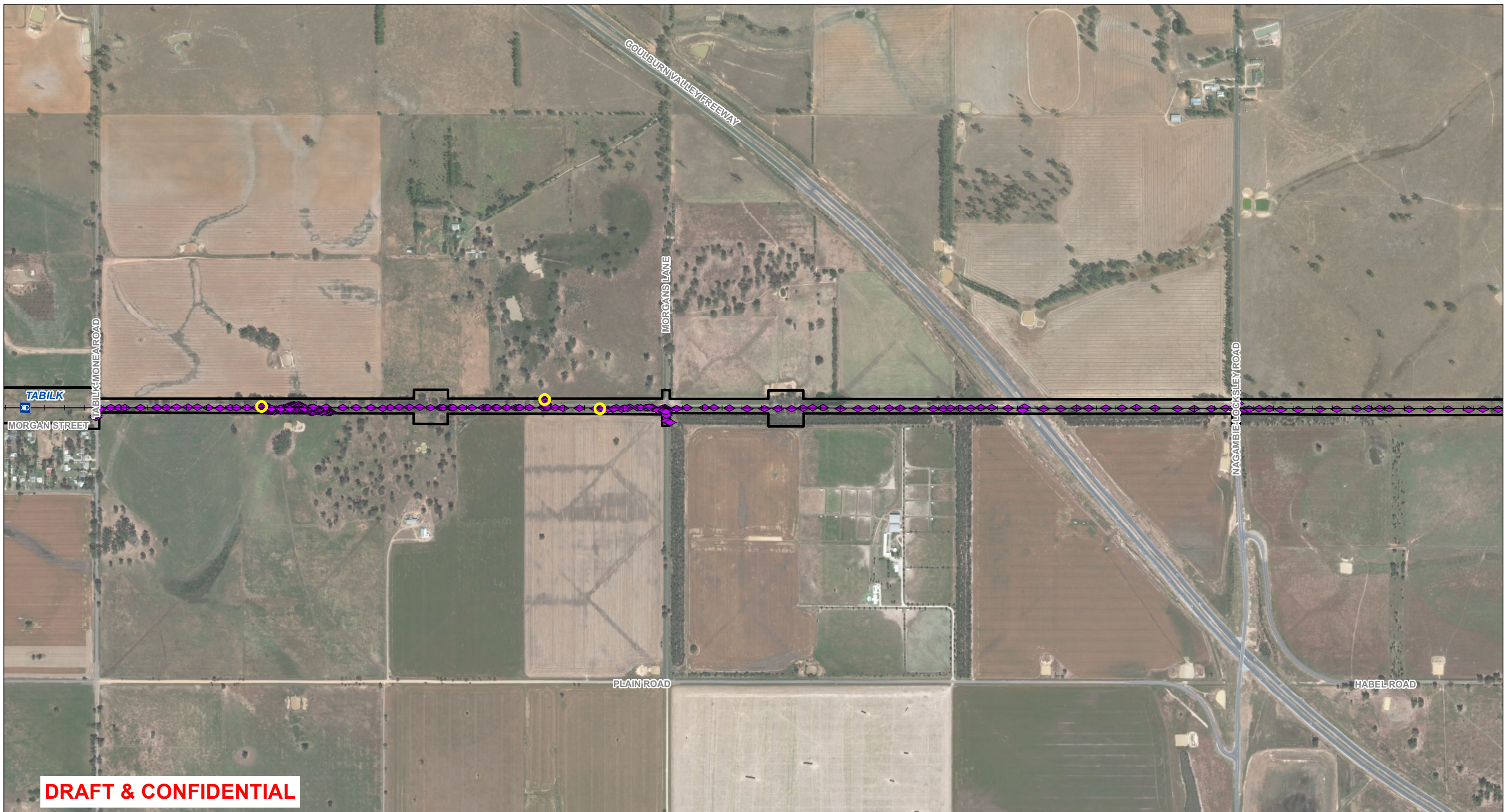
AJM Joint Venture
aurecon JACOBS
 MOTT MACDONALD

**Regional Rail Revival
 North-East & Shepparton**





Swift Parrot Survey Locations

Drawing Number:		Revision:	
NES-AJM-PWD-PWD-MAP-XEV-VIC-0419083		A.1	
Drawn By:	Approved By:	Date:	Map Size:
A. Mattinson	S. Waller	25/09/2019	A3



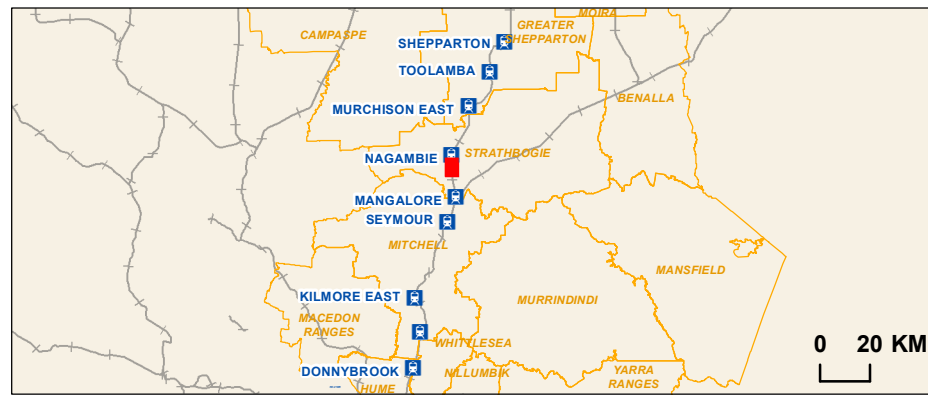


DRAFT & CONFIDENTIAL

-  Rail station
-  Swift Parrot Point Survey
-  Swift Parrot Driving Survey
-  Project Area

Map 6 of 15

Data Sources:
 AJM 2018
 DELWP 2018
 Vicmap 2018
 Basemap: ESRI 2018



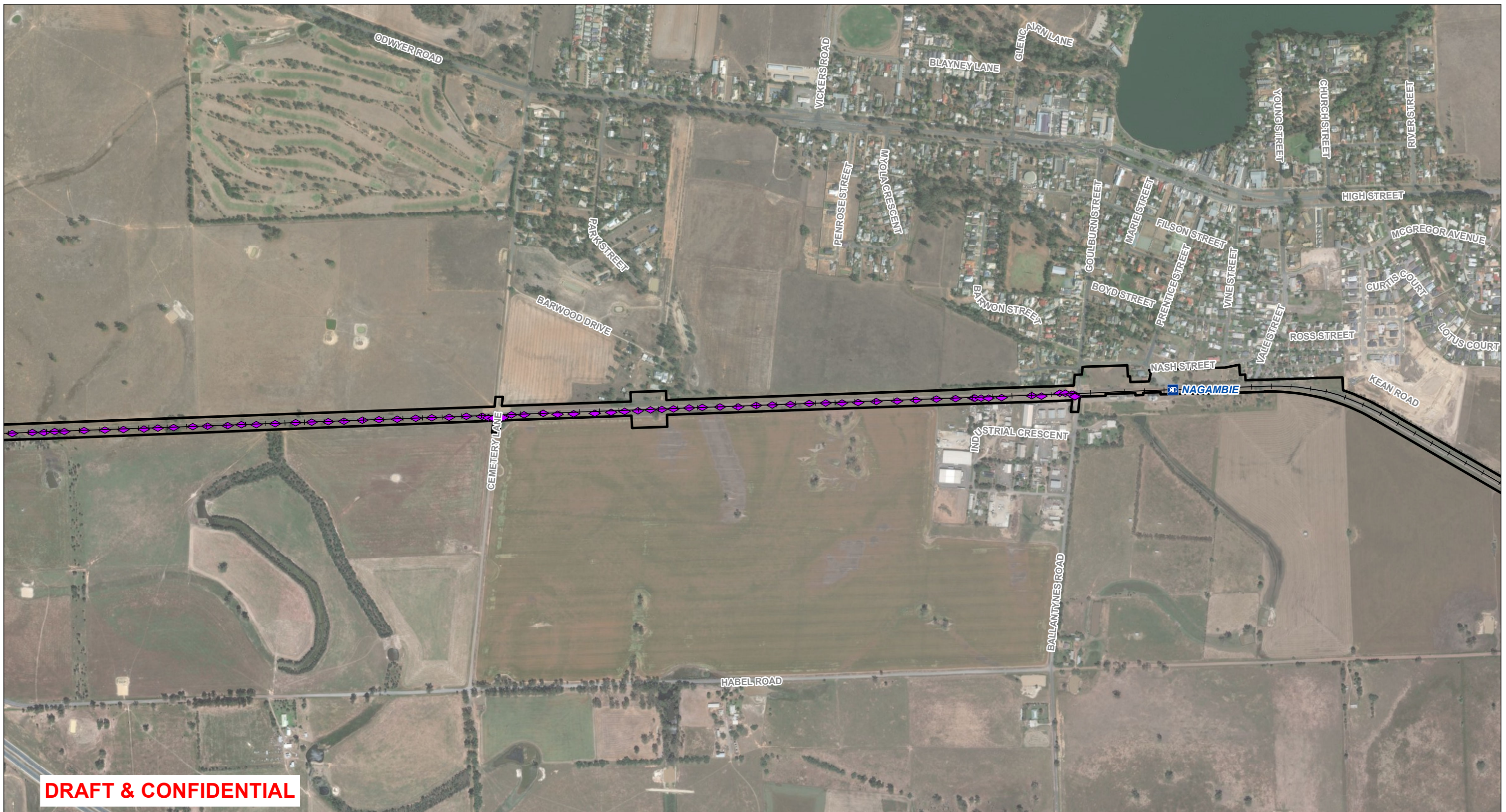
RAIL PROJECTS VICTORIA

AJM Joint Venture **aurecon JACOBS** MOTT MACDONALD





Regional Rail Revival North-East & Shepparton
 Swift Parrot Survey Locations

Drawing Number:		Revision:	
NES-AJM-PWD-PWD-MAP-XEV-VIC-0419083		A.1	
Drawn By:	Approved By:	Date:	Map Size:
A. Mattinson	S. Waller	25/09/2019	A3

0 250 500
 Metres
 Coordinate System: GDA 1994 MGA Zone 55

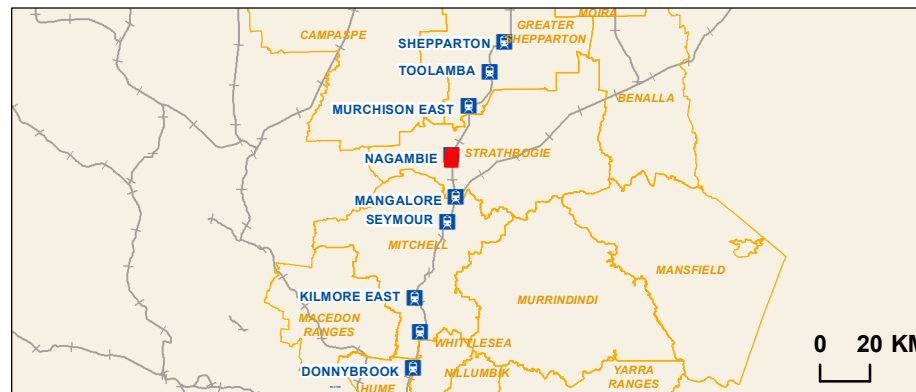


DRAFT & CONFIDENTIAL

-  Rail station
-  Swift Parrot Point Survey
-  Swift Parrot Driving Survey
-  Project Area

Map 7 of 15

Data Sources:
 AJM 2018
 DELWP 2018
 Vicmap 2018
 Basemap: ESRI 2018



RAIL PROJECTS VICTORIA

AJM Joint Venture
aurecon JACOBS MOTT MACDONALD

Regional Rail Revival North-East & Shepparton
 Swift Parrot Survey Locations

Drawing Number:		Revision:	
NES-AJM-PWD-PWD-MAP-XEV-VIC-0419083		A.1	
Drawn By:	Approved By:	Date:	Map Size:
A. Mattinson	S. Waller	25/09/2019	A3

