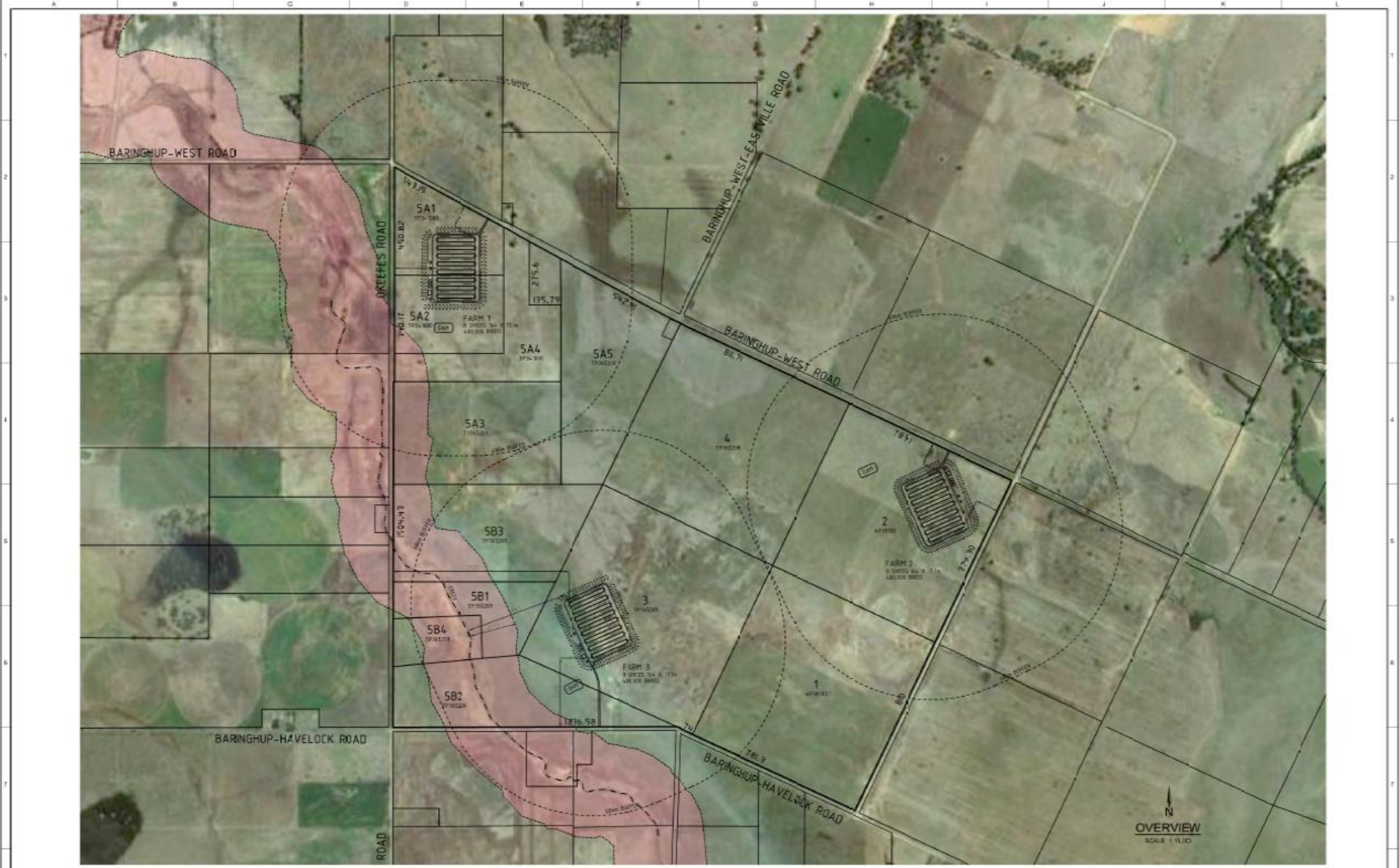


Attachment 1- Project Location



Attachment 2- Project Siting



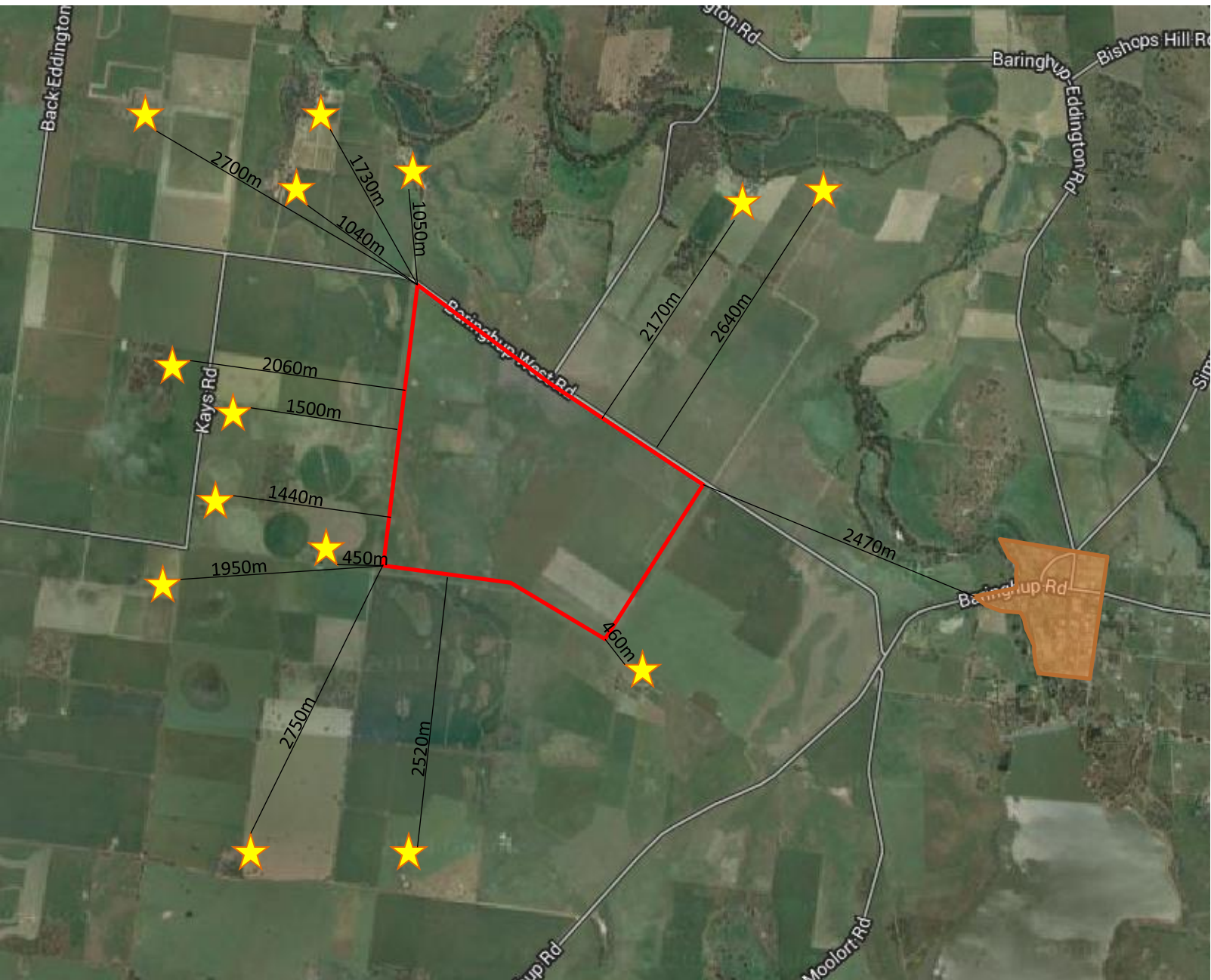
REV	REVISION	BY	DATE	SHEET No.




NOTES

DESIGNED BY	SAW	10/10/2012	 LAND MANAGEMENT SURVEYS (MELBOURNE) SURVEYORS ENGINEERS PLANNERS 54 BALCOMBE ROAD MENTONE 3185 Ph (03) 8683 0988 Fax (03) 8683 0888
DRAWN BY	SP	11/10/2012	
CHECKED BY	PA	11/10/2012	
APPROVED BY	SAW	10/10/2012	
DATE	SAW	10/10/2012	
DRS FILE No. P1578-AJ41508-ENGINEERING-V4-009			

BRCILER FARM DEVELOPMENT		SCALE: 1 : 10,000
290 BARINGHUP-HAVELOCK ROAD		SHEET 1 OF 1
BARINGHUP WEST		REVISION -
OVERLAY OF ABORIGINAL HERITAGE SENSITIVE AREA		FILE No. 10795

Attachment 3- Proximity of site to residences and Baringhup Township

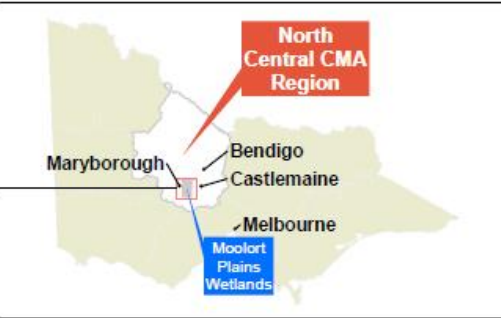


-  Subject Site
-  Baringhup
-  Dwellings within 3km radius of site

Attachment 4- Moolort Plains Wetlands complex area and subject site map (source- NCCMA)



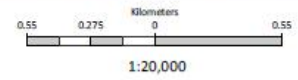
Moolort Plains





Freshwater Meadows East of Baringhup


- | | | | | |
|-----------------|------------|------------|---------------------|-------------|
| River | Channel | Freeway | Wetland Swamp | Parcel View |
| Stream | Drain | Highway | WETLAND 1994 | |
| Channel - Drain | Structure | Major Road | Deep marsh | |
| Connector | Minor Road | | Open water | |
| | | | Meadow | |
| | | | Sewerage pond | |
| | | | Shallow marsh | |
| | | | Semi saline | |
| | | | Permanent saline | |



The State of Victoria does not warrant the accuracy or completeness of information in this publication and any person using or relying upon such information does so on the basis that the State of Victoria shall bear no responsibility or liability whatsoever for any errors, faults, defects or omissions in the information.

Attachment 5- Location of Crown Land within Farm 1 separation distance.



 Crown land managed by DEPI