




KEY FEATURES AND SENSITIVE RECEIVERS

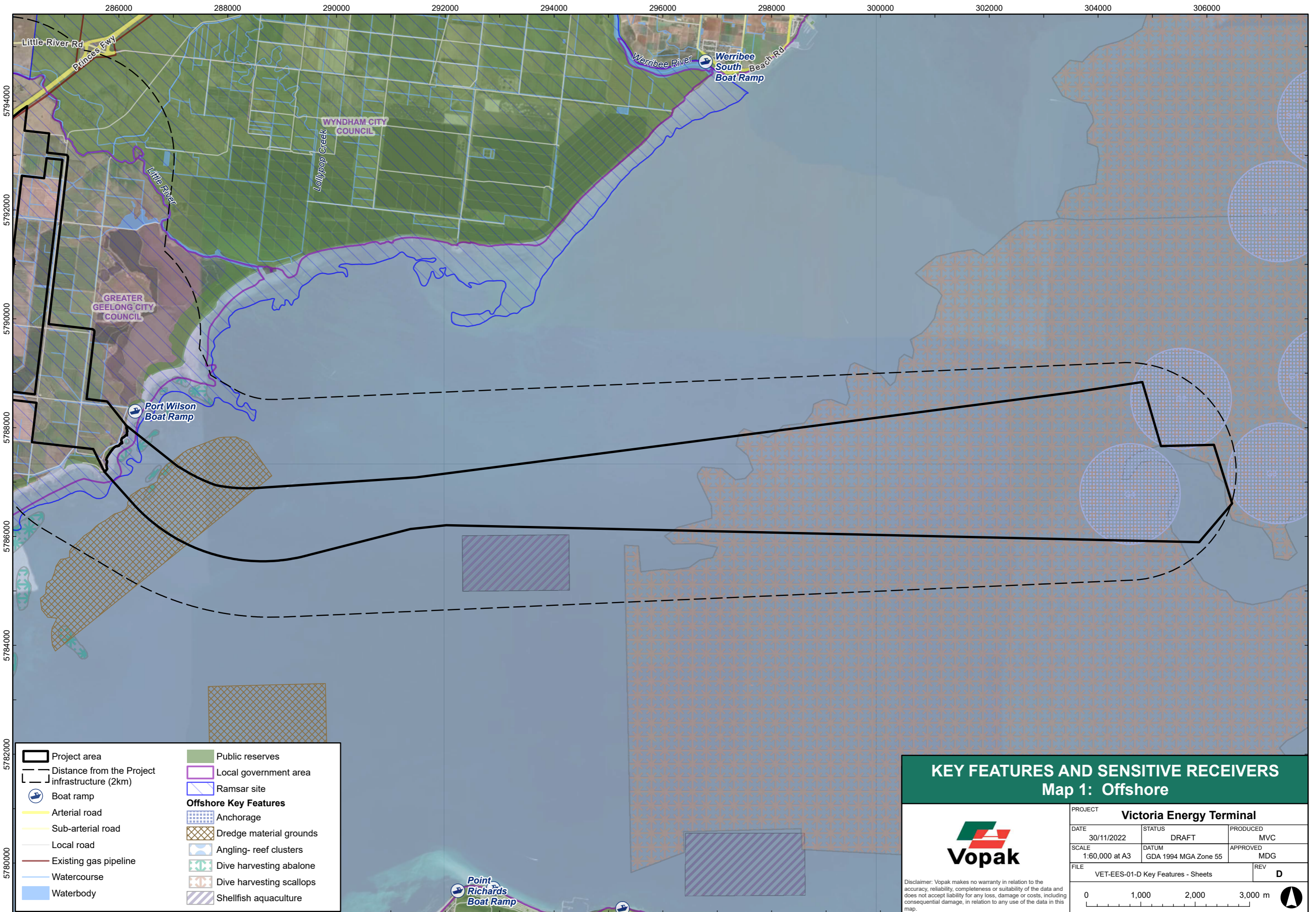


Vopak

Disclaimer: Vopak makes no warranty in relation to the accuracy, reliability, completeness or suitability of the data and does not accept liability for any loss, damage or costs, including consequential damage, in relation to any use of the data in this map.

PROJECT Victoria Energy Terminal		
DATE 30/11/2022	STATUS DRAFT	PRODUCED MVC
SCALE 1:125,000 at A3	DATUM GDA2020 MGA Zone 55	APPROVED MDG
FILE VET-EES-01-D Key Features		REV D



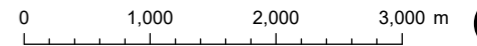
- Project area
- Distance from the Project infrastructure (2km)
- Boat ramp
- Arterial road
- Sub-arterial road
- Local road
- Existing gas pipeline
- Watercourse
- Waterbody
- Public reserves
- Local government area
- Ramsar site
- Offshore Key Features**
- Anchorage
- Dredge material grounds
- Angling- reef clusters
- Dive harvesting abalone
- Dive harvesting scallops
- Shellfish aquaculture

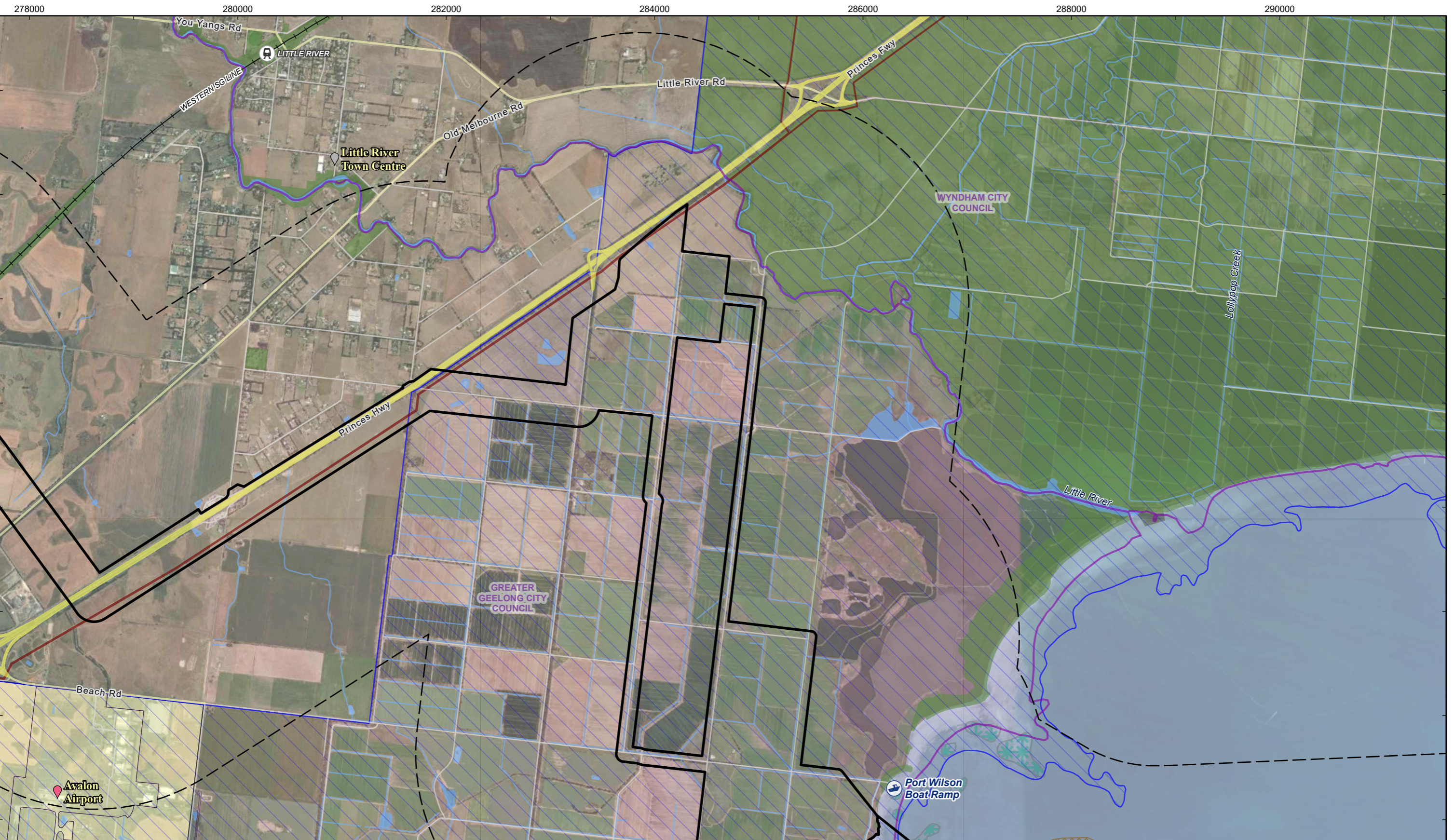
KEY FEATURES AND SENSITIVE RECEIVERS

Map 1: Offshore



Disclaimer: Vopak makes no warranty in relation to the accuracy, reliability, completeness or suitability of the data and does not accept liability for any loss, damage or costs, including consequential damage, in relation to any use of the data in this map.

PROJECT		
Victoria Energy Terminal		
DATE	STATUS	PRODUCED
30/11/2022	DRAFT	MVC
SCALE	DATUM	APPROVED
1:60,000 at A3	GDA 1994 MGA Zone 55	MDG
FILE	REV	
VET-EES-01-D Key Features - Sheets	D	
		



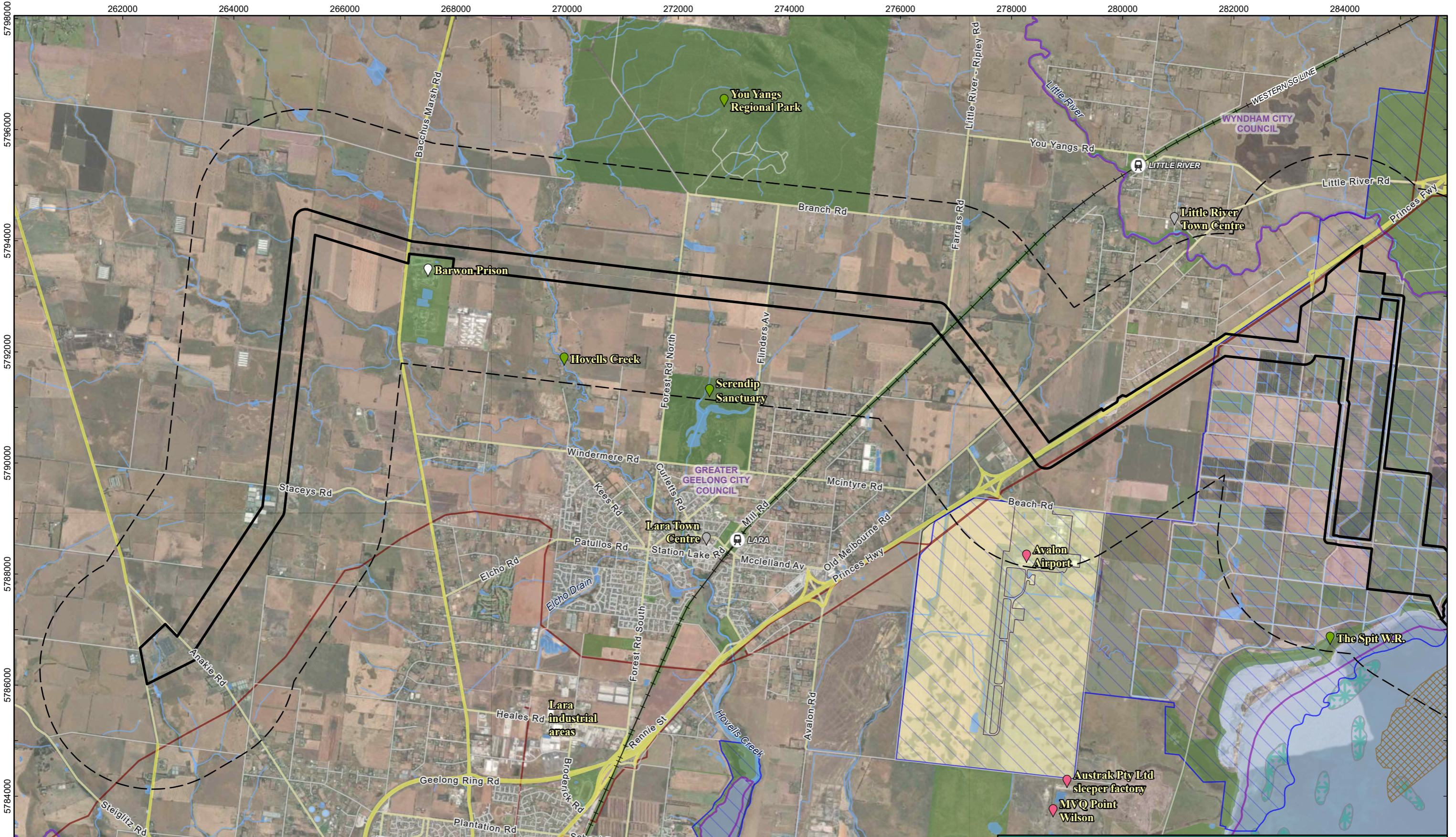
Project area	Existing gas pipeline	Avalon airport land
Distance from the Project infrastructure (2km)	Watercourse	Ramsar site
Boat ramp	Waterbody	Offshore Key Features
Railway station	Public reserves	Anchorage
Railway line	Local government area	Dredge material grounds
Arterial road	Onshore Key Features	Angling- reef clusters
Sub-arterial road	Businesses	Dive harvesting abalone
Local road	Parks and reserves	Dive harvesting scallops
	Town centres	

KEY FEATURES AND SENSITIVE RECEIVERS

Map 2: Onshore Pipeline

PROJECT Victoria Energy Terminal		
DATE 30/11/2022	STATUS DRAFT	PRODUCED MVC
SCALE 1:35,000 at A3	DATUM GDA 1994 MGA Zone 55	APPROVED MDG
FILE VET-EES-01-D Key Features - Sheets		REV D

Disclaimer: Vopak makes no warranty in relation to the accuracy, reliability, completeness or suitability of the data and does not accept liability for any loss, damage or costs, including consequential damage, in relation to any use of the data in this map.



Project area	Existing gas pipeline	Town centres
Distance from the Project infrastructure (2km)	Watercourse	Avalon airport land
Boat ramp	Waterbody	Ramsar site
Railway station	Public reserves	Offshore Key Features
Railway line	Local government area	Anchorage
Arterial road	Onshore Key Features	Dredge material grounds
Sub-arterial road	Businesses	Angling- reef clusters
Local road	Parks and reserves	Dive harvesting abalone
	Prisons	Dive harvesting scallops

KEY FEATURES AND SENSITIVE RECEIVERS

Map 3: Onshore Powerline

PROJECT Victoria Energy Terminal		
DATE 30/11/2022	STATUS DRAFT	PRODUCED MVC
SCALE 1:65,000 at A3	DATUM GDA 1994 MGA Zone 55	APPROVED MDG
FILE VET-EES-01-D Key Features - Sheets		REV D

Disclaimer: Vopak makes no warranty in relation to the accuracy, reliability, completeness or suitability of the data and does not accept liability for any loss, damage or costs, including consequential damage, in relation to any use of the data in this map.