



20° 30° 40° NE 50° 60° 70°

XURBAN

Urban Design
Landscape Architecture
Visual Assessment

Suite 6, 60 Little Latrobe Street,
Melbourne Victoria 3000

P: 61 3 9642 8040
E: allan.wyatt@xurban.com.au

Layout

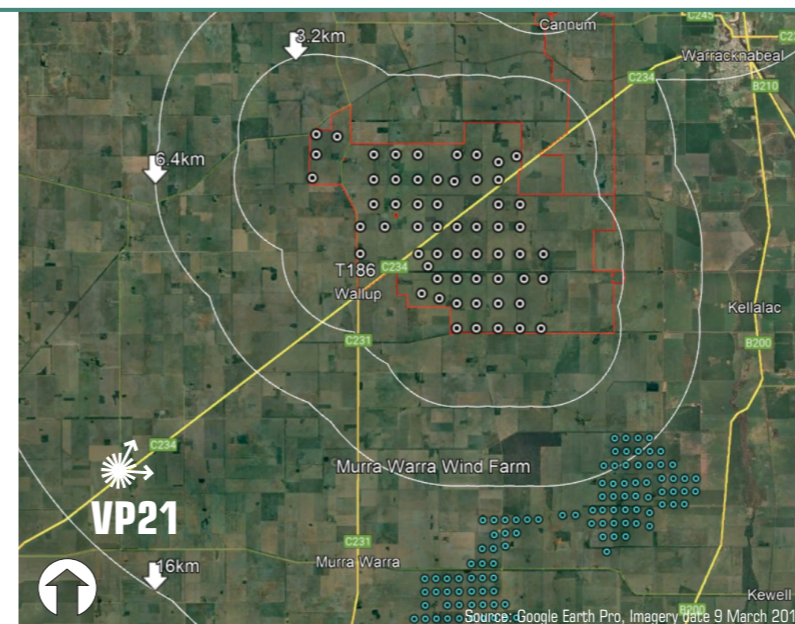
Wind turbine layout - V08-01

Photography data

Photography date: 12 May 2022 at 4:16 PM
Camera: Nikon D5
Lens: 60mm

VP 21

Location data reference: Grid Datum: GDA94 Zone 54
Latitude: -36.404020°
Longitude: 142.118133°
Ground level: 137m
Distance to nearest wind turbine: (T186) 13km
Bearing 49° approx



Project:
Warracknabeal Energy Park

Client:
Warracknabeal Energy Park Pty Ltd

Location:
Katyil-Wail Road
270m west of Borung Highway

Photomontage - 60° FOV

Date: 21 May 2022 Project No: 15187
Drawing: **Viewpoint 21** Sheet: **21.03**