



Numbered turbines



Wireframe model

XURBAN

Urban Design
Landscape Architecture
Visual Assessment

Suite 6, 60 Little Latrobe Street,
Melbourne Victoria 3000

P: 61 3 9642 8040
E: allan.wyatt@xurban.com.au

Layout

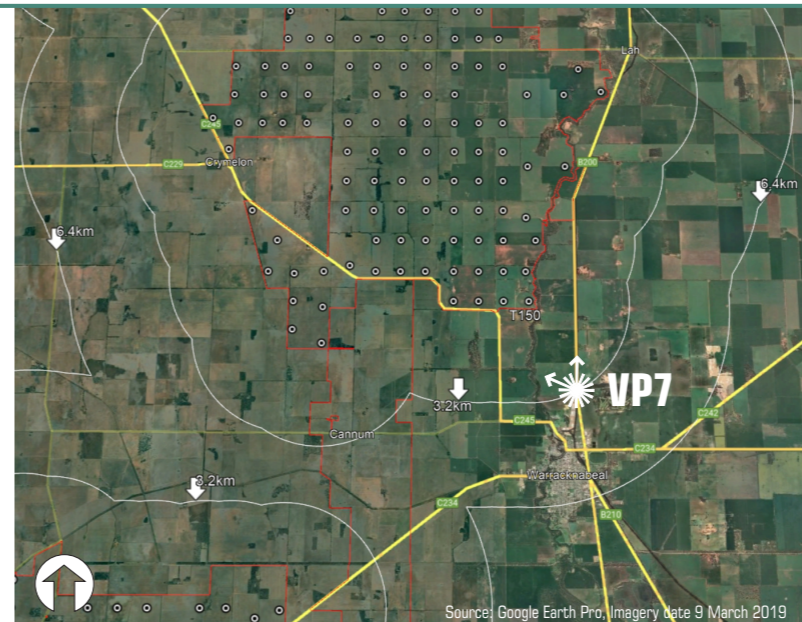
Wind turbine layout - V08-01

Photography data

Photography date: 12 May 2022 at 11:14AM
Camera: Nikon D5
Lens: 60mm

VP 7

Location data reference: Grid Datum: GDA94 Zone 54
Latitude: -36.230558°
Longitude: 142.399008°
Ground level: 109m
Distance to nearest wind turbine: (T150) 3.3km
Bearing 332° approx



Project:
Warracknabeal Energy Park

Client:
Warracknabeal Energy Park Pty Ltd

Location:
**Henty Highway
North of Warracknabeal**

Wireframe & numbered turbines

Date: 22 May 2022 Project No: 15187

Drawing: **Viewpoint 7** Sheet: **7.04**