




Project area	Indicative Gas Receiving Station site
Indicative onshore pipeline route	Indicative FSRU location
Indicative shore crossing pipeline route	Marine berth area
Indicative subsea pipeline route	Boat ramp
Indicative electricity cable (option 1a underground)	Arterial road
Indicative electricity cable (option 1b underground)	Sub-arterial road
Indicative electricity cable (option 2 overhead)	Local road
Indicative electricity cable shore crossing	Existing gas pipeline
Indicative subsea electricity cable	Watercourse
	Waterbody
	Cadastral boundaries
	Local government area

## PROPOSED WORKS - Map 1: Offshore

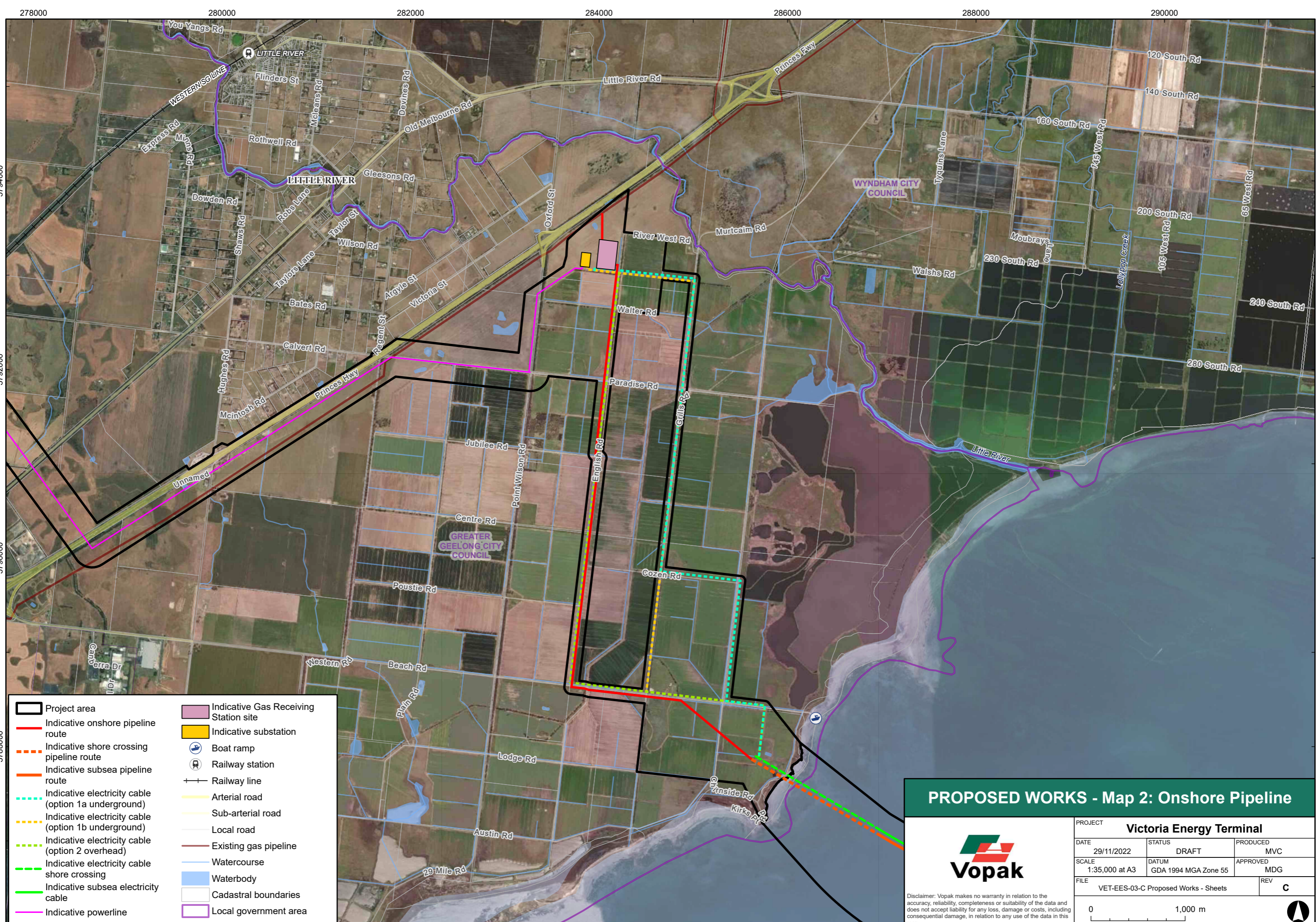


<b>PROJECT</b>		
<b>Victoria Energy Terminal</b>		
DATE 29/11/2022	STATUS DRAFT	PRODUCED MVC
SCALE 1:60,000 at A3	DATUM GDA 1994 MGA Zone 55	APPROVED MDG
FILE VET-EES-03-C Proposed Works - Sheets		REV <b>C</b>

Disclaimer: Vopak makes no warranty in relation to the accuracy, reliability, completeness or suitability of the data and does not accept liability for any loss, damage or costs, including consequential damage, in relation to any use of the data in this map.





278000 280000 282000 284000 286000 288000 290000

5794000  
5792000  
5790000  
5788000

- Project area
- Indicative onshore pipeline route
- Indicative shore crossing pipeline route
- Indicative subsea pipeline route
- Indicative electricity cable (option 1a underground)
- Indicative electricity cable (option 1b underground)
- Indicative electricity cable (option 2 overhead)
- Indicative electricity cable shore crossing
- Indicative subsea electricity cable
- Indicative powerline
- Indicative Gas Receiving Station site
- Indicative substation
- Boat ramp
- Railway station
- Railway line
- Arterial road
- Sub-arterial road
- Local road
- Existing gas pipeline
- Watercourse
- Waterbody
- Cadastral boundaries
- Local government area

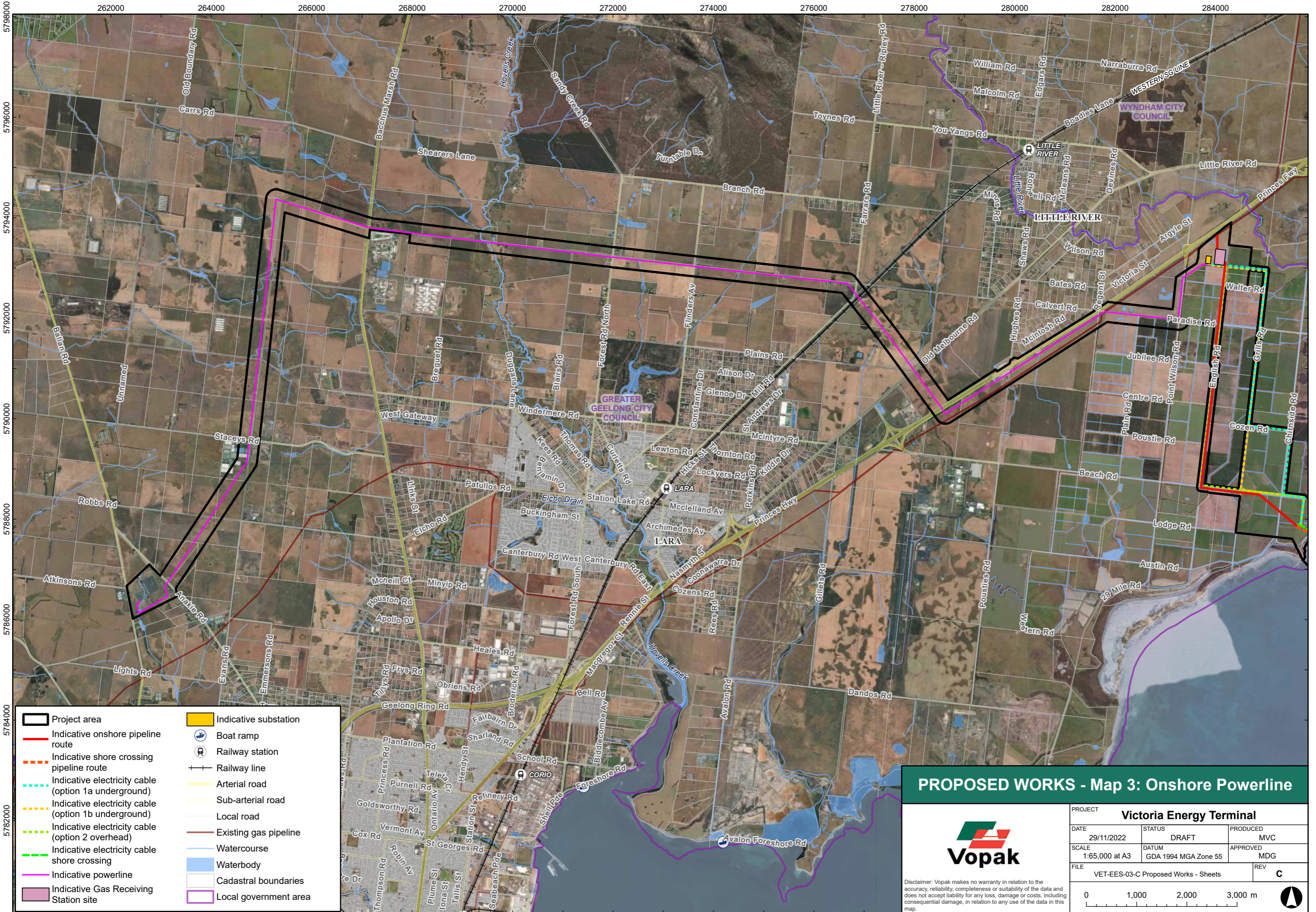
## PROPOSED WORKS - Map 2: Onshore Pipeline

PROJECT		
<b>Victoria Energy Terminal</b>		
DATE	STATUS	PRODUCED
29/11/2022	DRAFT	MVC
SCALE	DATUM	APPROVED
1:35,000 at A3	GDA 1994 MGA Zone 55	MDG
FILE	REV	
VET-EES-03-C Proposed Works - Sheets	C	


Disclaimer: Vopak makes no warranty in relation to the accuracy, reliability, completeness or suitability of the data and does not accept liability for any loss, damage or costs, including consequential damage, in relation to any use of the data in this map.

0 1,000 m



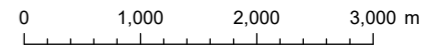



## PROPOSED WORKS - Map 3: Onshore Powerline



**Vopak**

PROJECT		
<b>Victoria Energy Terminal</b>		
DATE	STATUS	PRODUCED
29/11/2022	DRAFT	MVC
SCALE	DATUM	APPROVED
1:65,000 at A3	GDA 1994 MGA Zone 55	MDG
FILE	REV	
VET-EES-03-C Proposed Works - Sheets	<b>C</b>	

Disclaimer: Vopak makes no warranty in relation to the accuracy, reliability, completeness or suitability of the data and does not accept liability for any loss, damage or costs, including consequential damage, in relation to any use of the data in this map.