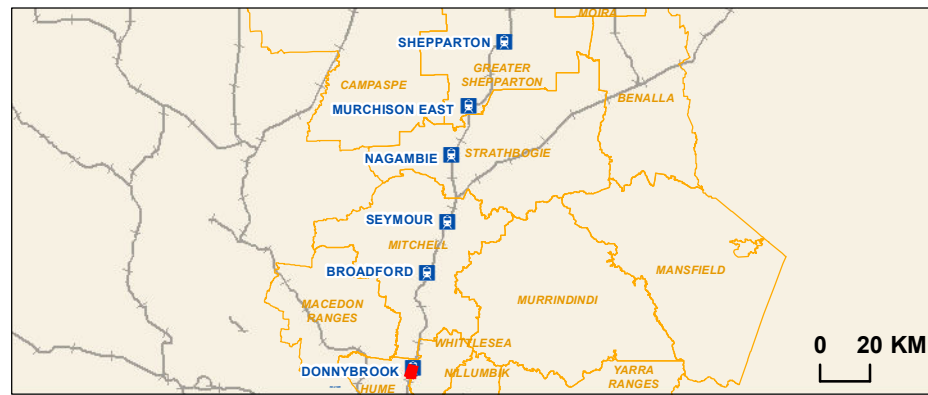


- Rail station
- Railway
- LGA
- Cadastre
- GC135 Project Land
- ESO-Environmental Significance Overlay
- DCPO-Development Contribution Plan Overlay
- HO-Heritage Overlay
- IPO-Incorporated Plan Overlay
- LSIO-Land Subject to Inundation Overlay
- RFO-Rural Floodway Overlay
- PAO-Public Acquisition Overlay

Map 1 of 69

Data Sources:  
 AJM 2019  
 Advisian 2018  
 Vicmap 2018  
 Basemap: ESRI 2018



**Regional Rail Revival**  
**North-East & Shepparton**


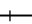










Planning Overlays

Drawing Number: NES-AJM-PWD-PWD-MAP-XLP-VIC-0419118	Revision: A.1
Drawn By: R.Lancaster	Approved By: G. Whelan
Date: 12/09/2019	Map Size: A3

0 100 200  
 Metres  
 Coordinate System: GDA 1994 MGA Zone 55

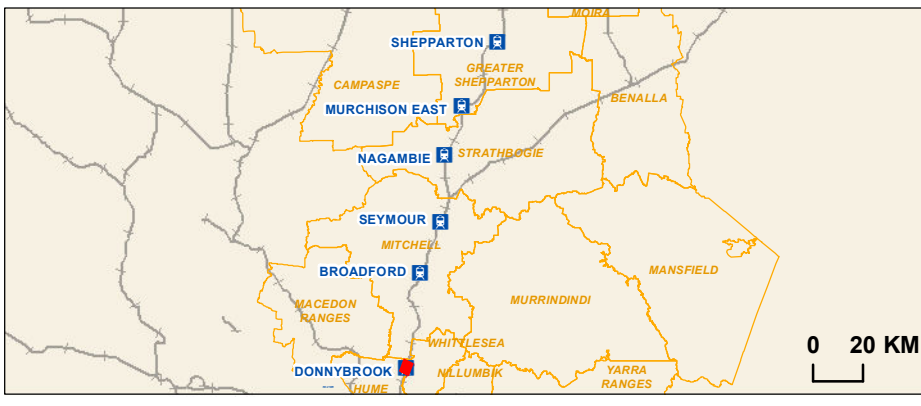




**DRAFT & CONFIDENTIAL**

-  Rail station
-  Railway
-  LGA
-  Cadastre
-  GC135 Project Land
-  ESO-Environmental Significance Overlay
-  DCPO-Development Contribution Plan Overlay
-  HO-Heritage Overlay
-  IPO-Incorporated Plan Overlay
-  LSIO-Land Subject to Inundation Overlay
-  PAO-Public Acquisition Overlay
-  SCO - Specific Control Overlay


Map 2 of 69

Data Sources:  
 AJM 2019  
 Advisian 2018  
 Vicmap 2018  
 Basemap: ESRI 2018



Joint Venture



**Regional Rail Revival**  
**North-East & Shepparton**

Planning Overlays

Drawing Number:		Revision:	
NES-AJM-PWD-PWD-MAP-XLP-VIC-0419118		A.1	
Drawn By:	Approved By:	Date:	Map Size:
R.Lancaster	G. Whelan	12/09/2019	A3

0 100 200  
Metres

Coordinate System: GDA 1994 MGA Zone 55

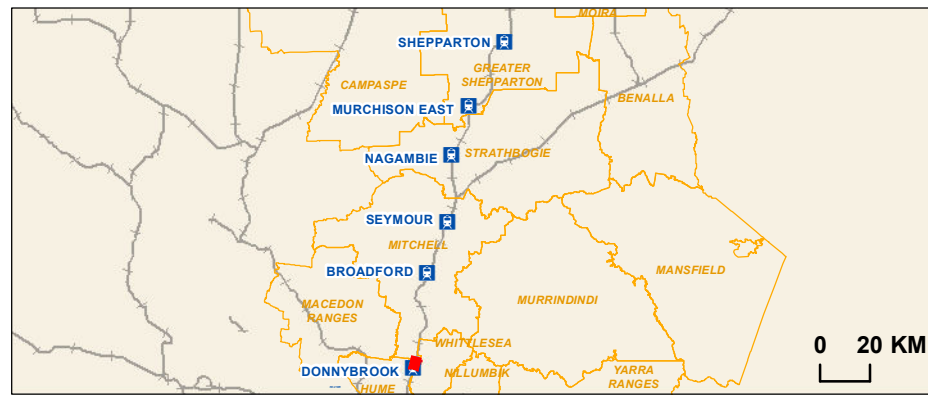


**DRAFT & CONFIDENTIAL**

- Rail station
- Railway
- LGA
- Cadastre
- GC135 Project Land
- ESO-Environmental Significance Overlay
- DCPO-Development Contribution Plan Overlay
- HO-Heritage Overlay
- IPO-Incorporated Plan Overlay
- LSIO-Land Subject to Inundation Overlay
- PAO-Public Acquisition Overlay

**Map 3 of 69**

Data Sources:  
 AJM 2019  
 Advisian 2018  
 Vicmap 2018  
 Basemap: ESRI 2018



**Regional Rail Revival**  
**North-East & Shepparton**

Planning Overlays

Drawing Number: NES-AJM-PWD-PWD-MAP-XLP-VIC-0419118	Revision: A.1
Drawn By: R.Lancaster	Approved By: G. Whelan
Date: 12/09/2019	Map Size: A3

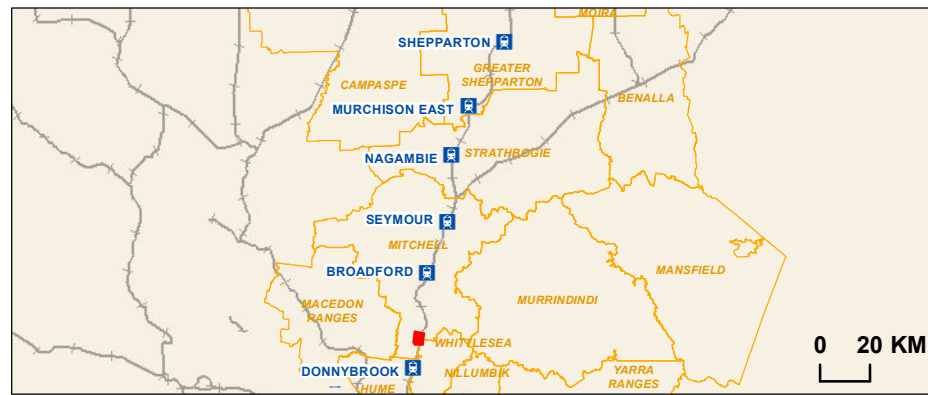
0 100 200  
 Metres  
 Coordinate System: GDA 1994 MGA Zone 55



**Map 4 of 69**

- Rail station
- Railway
- LGA
- Cadastre
- GC135 Project Land
- DPO-Development Plan Overlay
- FO-Floodway Overlay
- LSIO-Land Subject to Inundation Overlay
- RFO-Rural Floodway Overlay

Data Sources:  
 AJM 2019  
 Advisian 2018  
 Vicmap 2018  
 Basemap: ESRI 2018



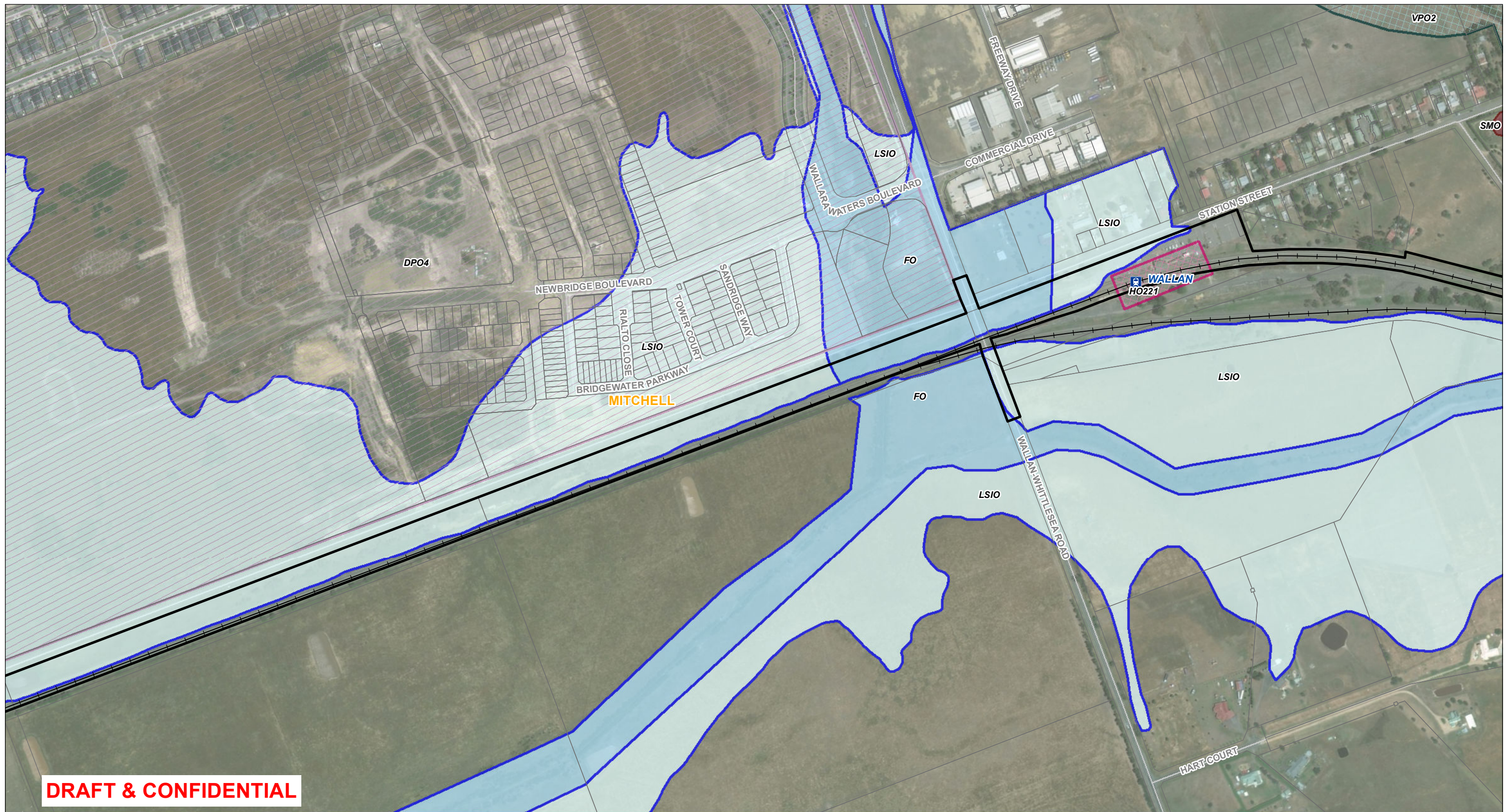
**Regional Rail Revival  
North-East & Shepparton**

Planning Overlays

Drawing Number:		Revision:	
NES-AJM-PWD-PWD-MAP-XLP-VIC-0419118		A.1	
Drawn By:	Approved By:	Date:	Map Size:
R.Lancaster	G. Whelan	12/09/2019	A3

0 100 200  
Metres

Coordinate System: GDA 1994 MGA Zone 55



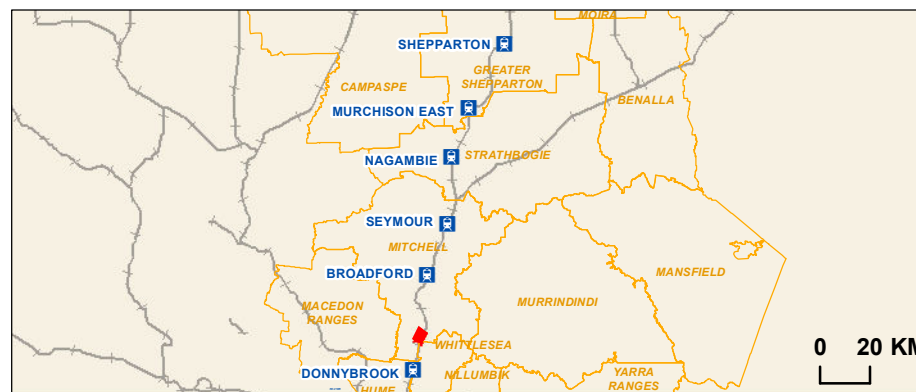
**DRAFT & CONFIDENTIAL**

- Rail station
- Railway
- LGA
- Cadastre
- GC135 Project Land
- VPO-Vegetation Protection Overlay
- DPO-Development Plan Overlay
- HO-Heritage Overlay
- FO-Floodway Overlay
- LSIO-Land Subject to Inundation Overlay

SMO-Salinity Management Overlay

**Map 5 of 69**

Data Sources:  
 AJM 2019  
 Advisian 2018  
 Vicmap 2018  
 Basemap: ESRI 2018



**RAIL PROJECTS VICTORIA**

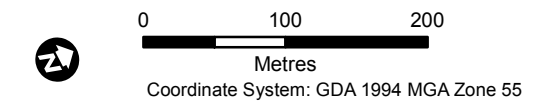
**AJM**  
 Joint Venture

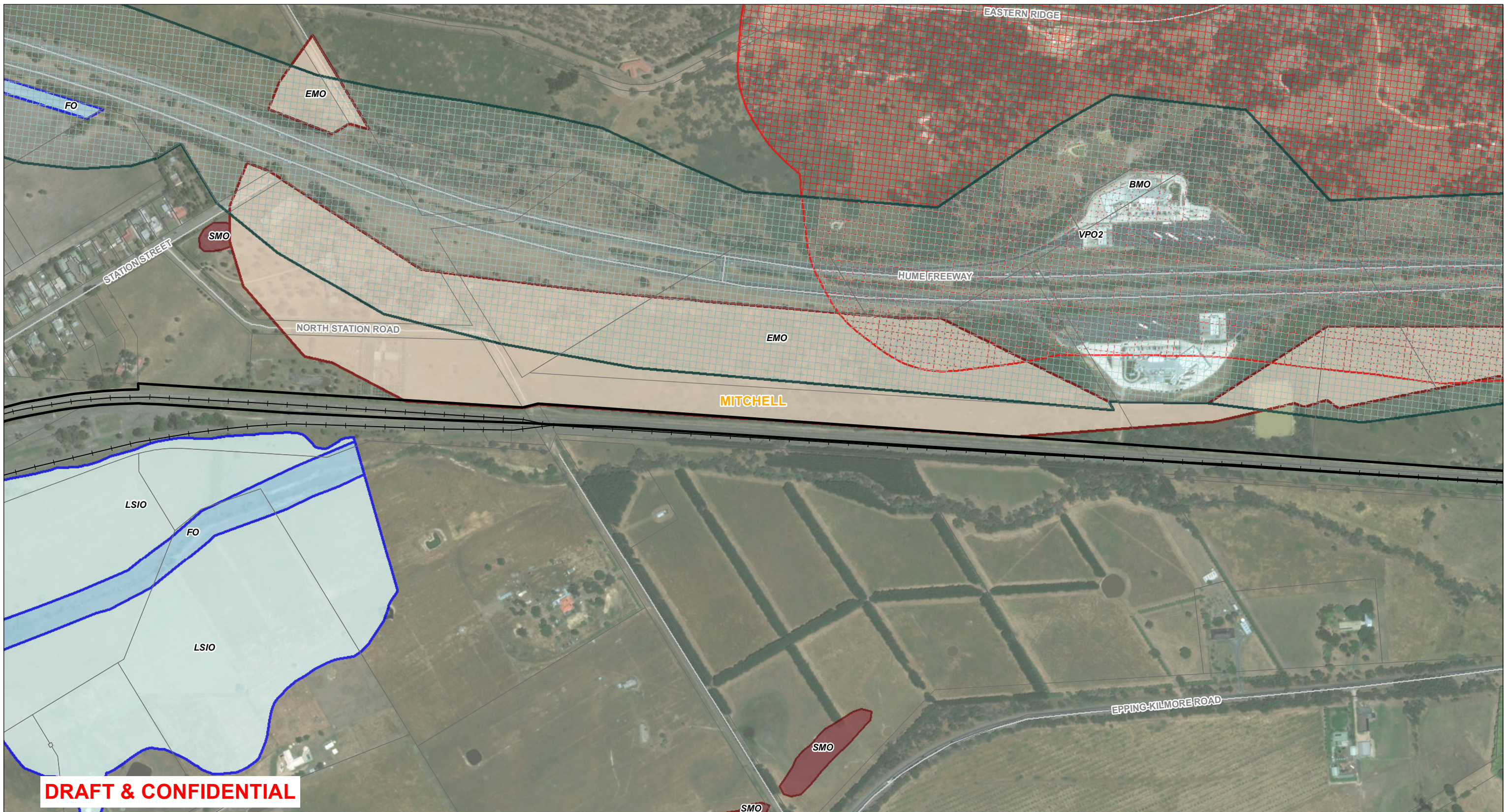
**aurecon JACOBS**  
 MOTT MACDONALD

**Regional Rail Revival  
 North-East & Shepparton**

**Planning Overlays**

Drawing Number: NES-AJM-PWD-PWD-MAP-XLP-VIC-0419118	Revision: A.1
Drawn By: R.Lancaster	Approved By: G. Whelan
Date: 12/09/2019	Map Size: A3

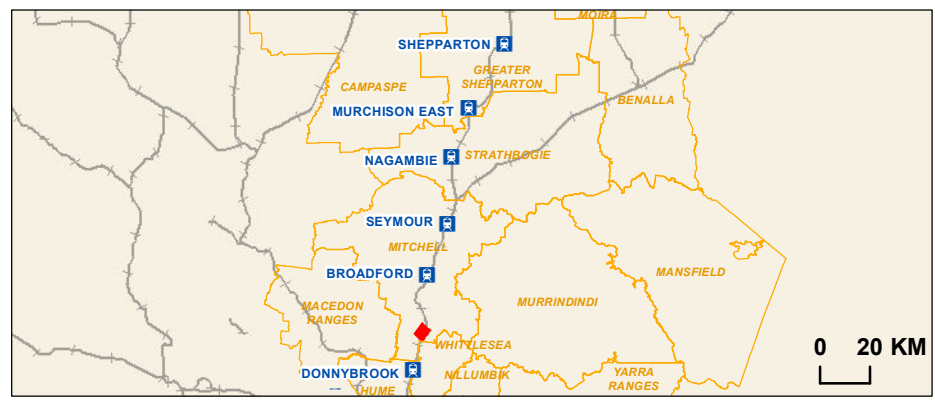




**Map 6 of 69**

- Rail station
- Railway
- LGA
- Cadastre
- GC135 Project Land
- VPO-Vegetation Protection Overlay
- BMO-Bushfire Management Overlay
- EMO-Erosion Management Overlay
- FO-Floodway Overlay
- LSIO-Land Subject to Inundation Overlay
- SMO-Salinity Management Overlay

Data Sources:  
 AJM 2019  
 Advisian 2018  
 Vicmap 2018  
 Basemap: ESRI 2018

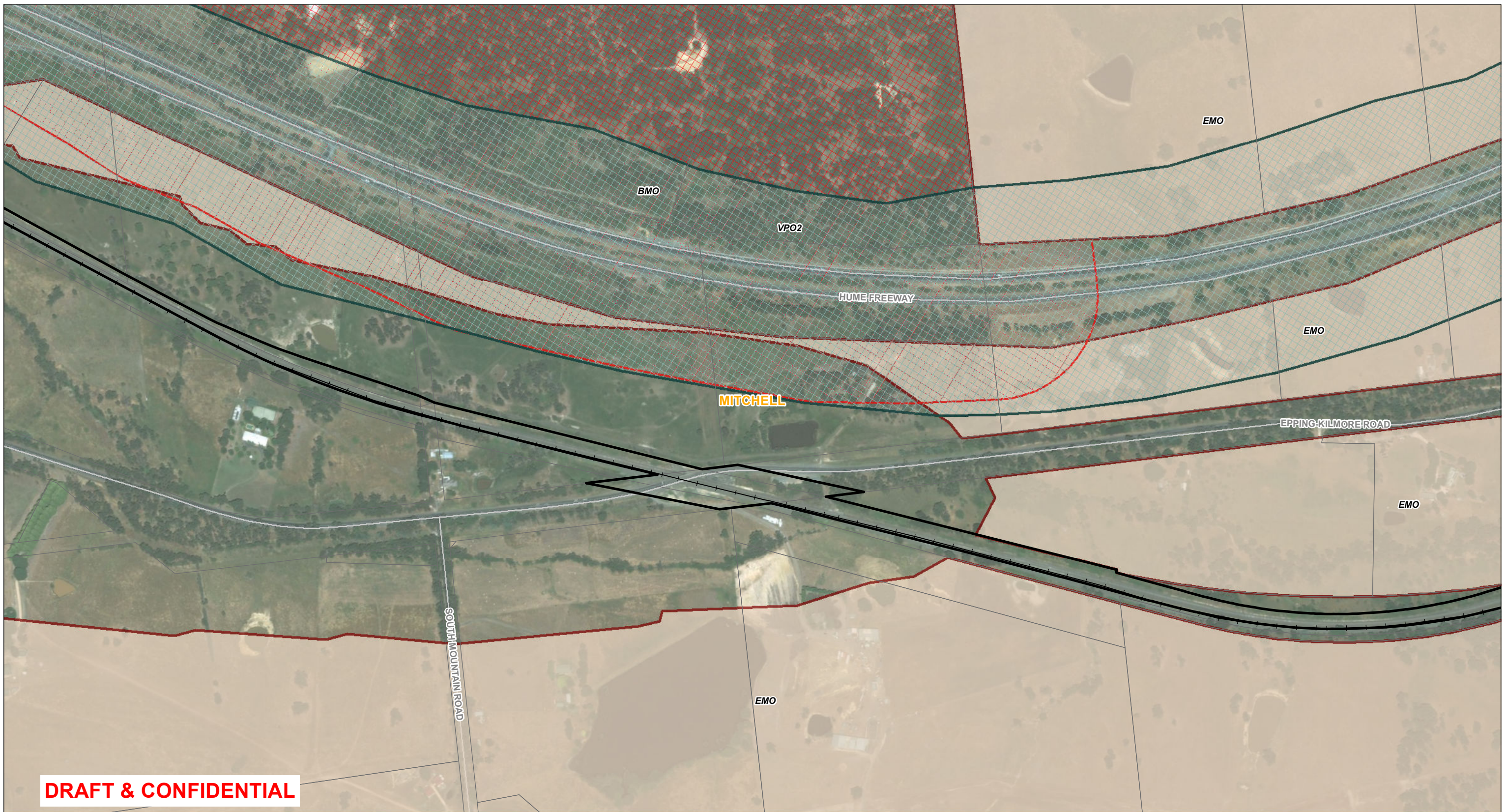


**Regional Rail Revival**  
**North-East & Shepparton**

Planning Overlays

Drawing Number: NES-AJM-PWD-PWD-MAP-XLP-VIC-0419118			Revision: A.1
Drawn By: R.Lancaster	Approved By: G. Whelan	Date: 12/09/2019	Map Size: A3

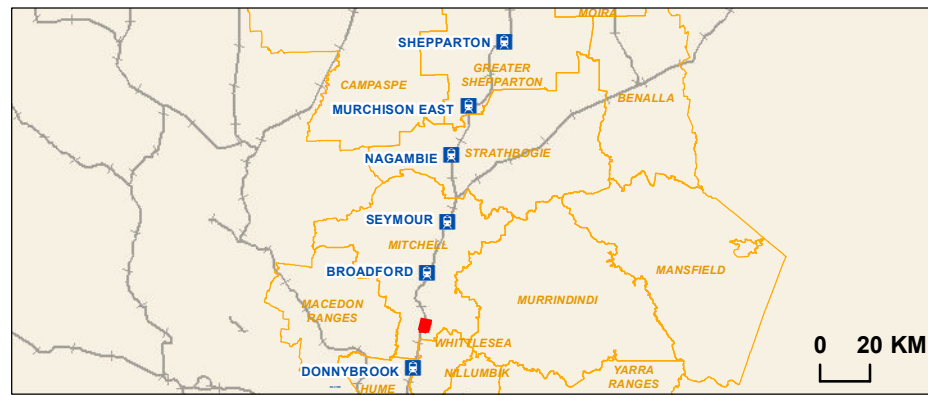
0 100 200  
Metres  
Coordinate System: GDA 1994 MGA Zone 55



**Map 7 of 69**

- Rail station
- Railway
- LGA
- Cadastre
- GC135 Project Land
- VPO-Vegetation Protection Overlay
- BMO-Bushfire Management Overlay
- EMO-Erosion Management Overlay

Data Sources:  
 AJM 2019  
 Advisian 2018  
 Vicmap 2018  
 Basemap: ESRI 2018



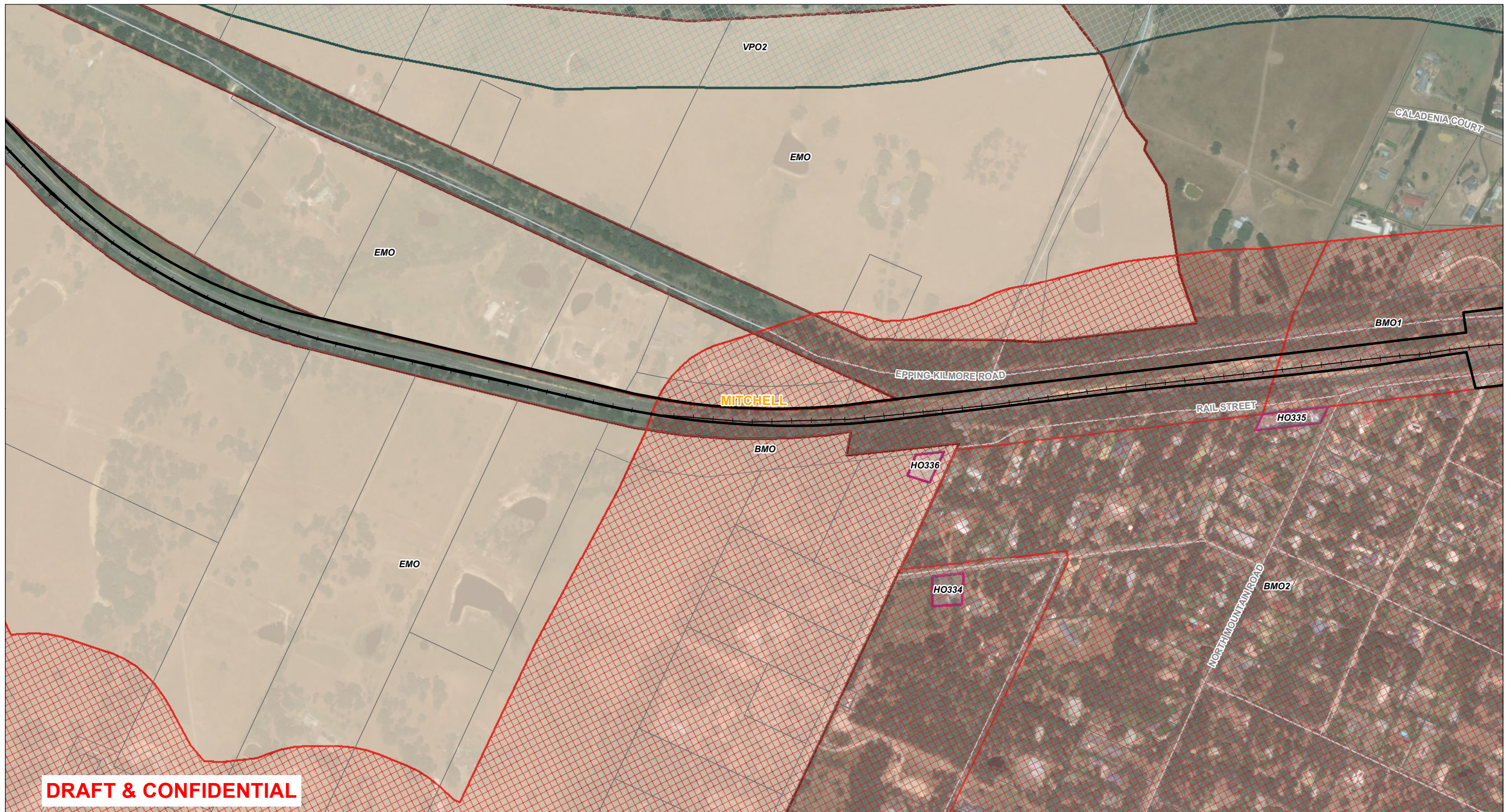
**Regional Rail Revival**  
**North-East & Shepparton**

Planning Overlays

Drawing Number:		Revision:	
NES-AJM-PWD-PWD-MAP-XLP-VIC-0419118		A.1	
Drawn By:	Approved By:	Date:	Map Size:
R.Lancaster	G. Whelan	12/09/2019	A3

Joint Venture

Coordinate System: GDA 1994 MGA Zone 55

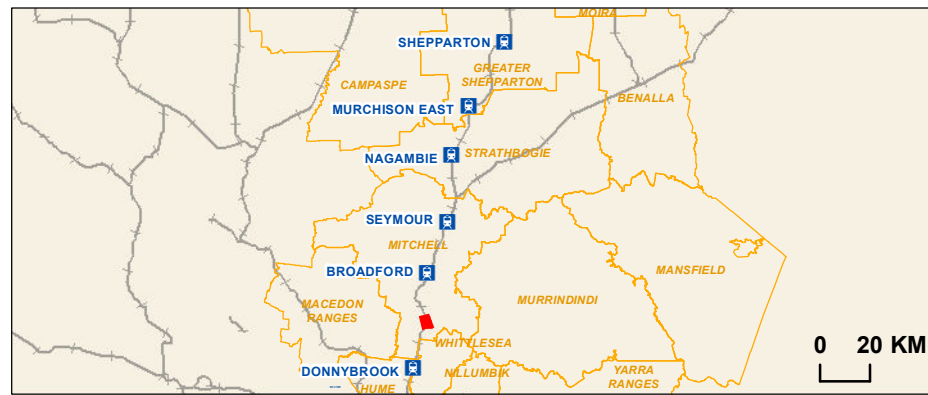


**DRAFT & CONFIDENTIAL**

- Rail station
- Railway
- LGA
- Cadastre
- GC135 Project Land
- VPO-Vegetation Protection Overlay
- HO-Heritage Overlay
- BMO-Bushfire Management Overlay
- EMO-Erosion Management Overlay

**Map 8 of 69**

Data Sources:  
 AJM 2019  
 Advisian 2018  
 Vicmap 2018  
 Basemap: ESRI 2018



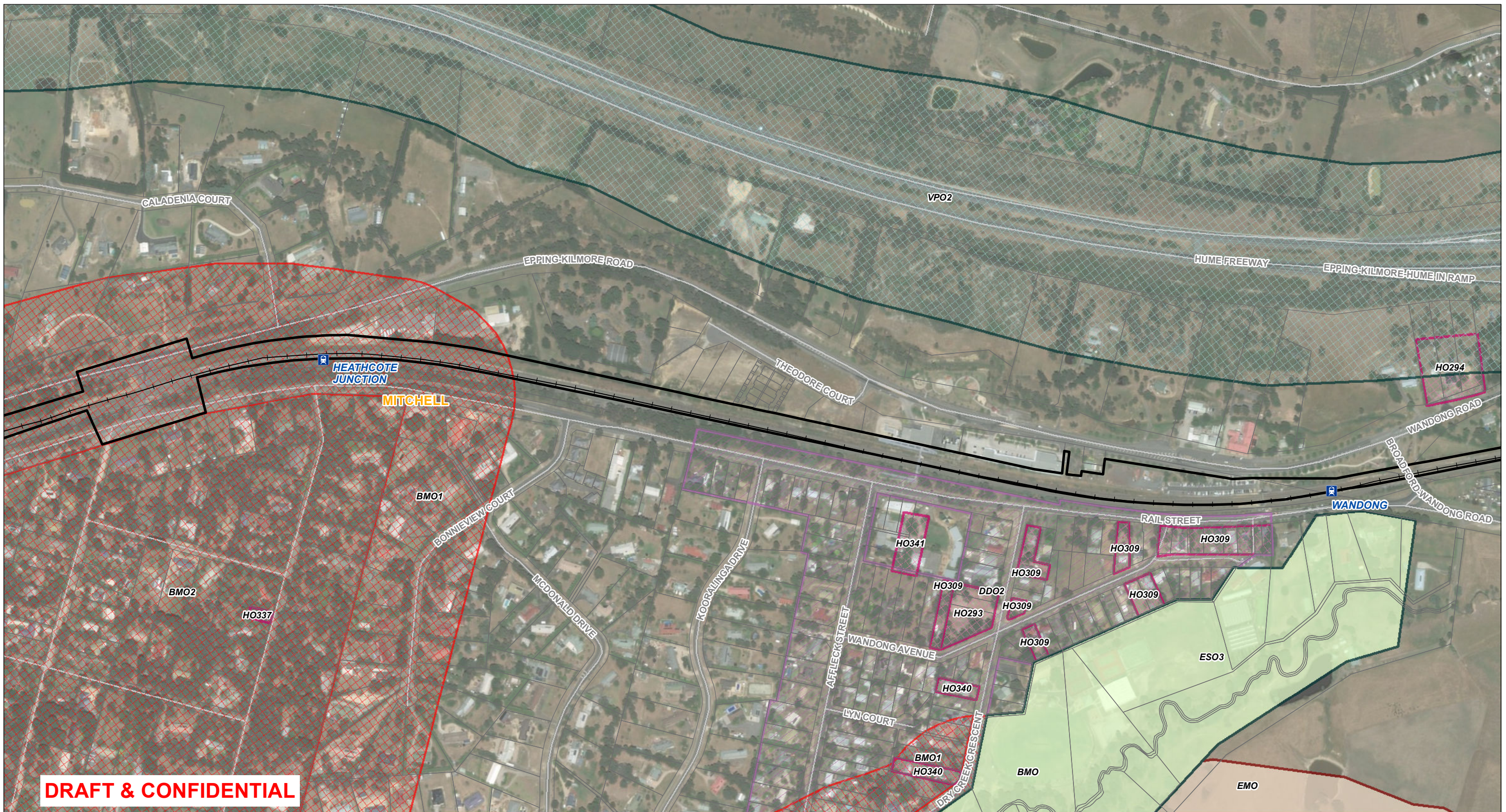
**Regional Rail Revival**  
**North-East & Shepparton**

Planning Overlays

Drawing Number: NES-AJM-PWD-PWD-MAP-XLP-VIC-0419118	Revision: A.1
Drawn By: R.Lancaster	Approved By: G. Whelan
Date: 12/09/2019	Map Size: A3

0 100 200  
 Metres  
 Coordinate System: GDA 1994 MGA Zone 55

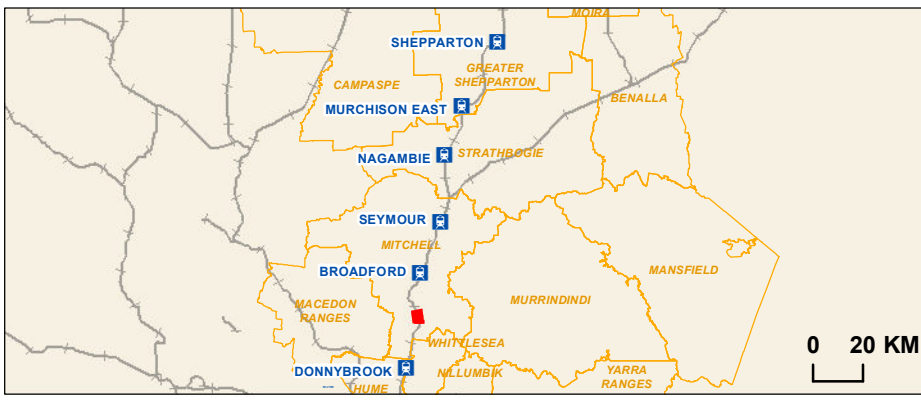




- Rail station
- Railway
- LGA
- Cadastre
- GC135 Project Land
- ESO-Environmental Significance Overlay
- VPO-Vegetation Protection Overlay
- DDO-Design and Development Overlay
- HO-Heritage Overlay
- BMO-Bushfire Management Overlay
- EMO-Erosion Management Overlay

Map 9 of 69

Data Sources:  
 AJM 2019  
 Advisian 2018  
 Vicmap 2018  
 Basemap: ESRI 2018



Joint Venture MOTT MACDONALD

**Regional Rail Revival**  
**North-East & Shepparton**

Planning Overlays

Drawing Number:		Revision:	
NES-AJM-PWD-PWD-MAP-XLP-VIC-0419118		A.1	
Drawn By:	Approved By:	Date:	Map Size:
R.Lancaster	G. Whelan	12/09/2019	A3

0 100 200  
Metres

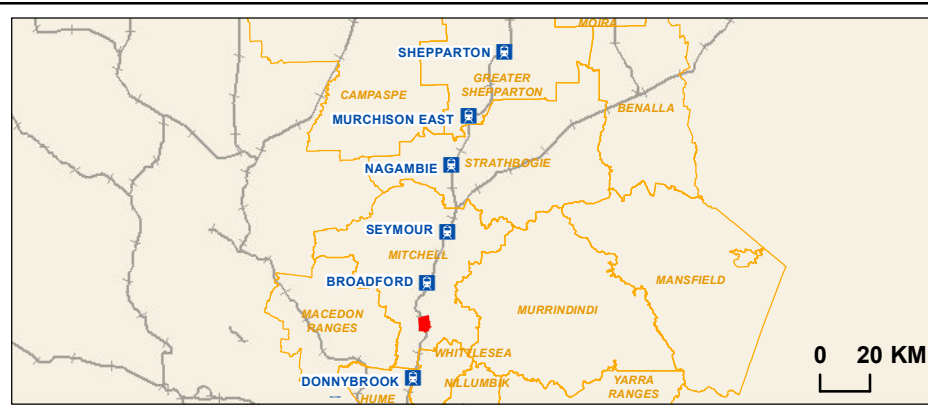
Coordinate System: GDA 1994 MGA Zone 55



**Map 10 of 69**

- Rail station
- Railway
- LGA
- Cadastre
- GC135 Project Land
- ESO-Environmental Significance Overlay
- VPO-Vegetation Protection Overlay
- DDO-Design and Development Overlay
- HO-Heritage Overlay
- BMO-Bushfire Management Overlay
- EMO-Erosion Management Overlay

Data Sources:  
 AJM 2019  
 Advisian 2018  
 Vicmap 2018  
 Basemap: ESRI 2018



**Regional Rail Revival  
North-East & Shepparton**

Planning Overlays

Drawing Number:		Revision:	
NES-AJM-PWD-PWD-MAP-XLP-VIC-0419118		A.1	
Drawn By:	Approved By:	Date:	Map Size:
R.Lancaster	G. Whelan	12/09/2019	A3


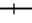



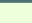

0 100 200

Metres

Coordinate System: GDA 1994 MGA Zone 55

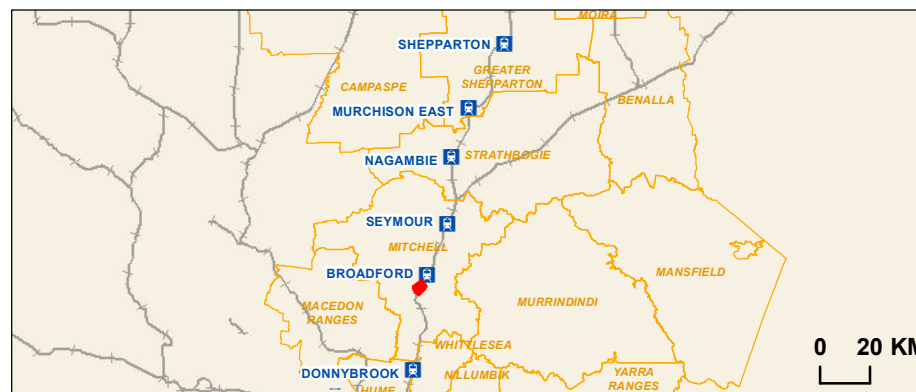


**DRAFT & CONFIDENTIAL**

-  Rail station
-  Railway
-  LGA
-  Cadastre
-  GC135 Project Land
-  ESO-Environmental Significance Overlay
-  SMO-Salinity Management Overlay

**Map 11 of 69**

Data Sources:  
 AJM 2019  
 Advisian 2018  
 Vicmap 2018  
 Basemap: ESRI 2018



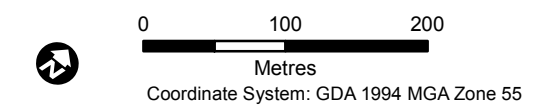
**RAIL PROJECTS VICTORIA**

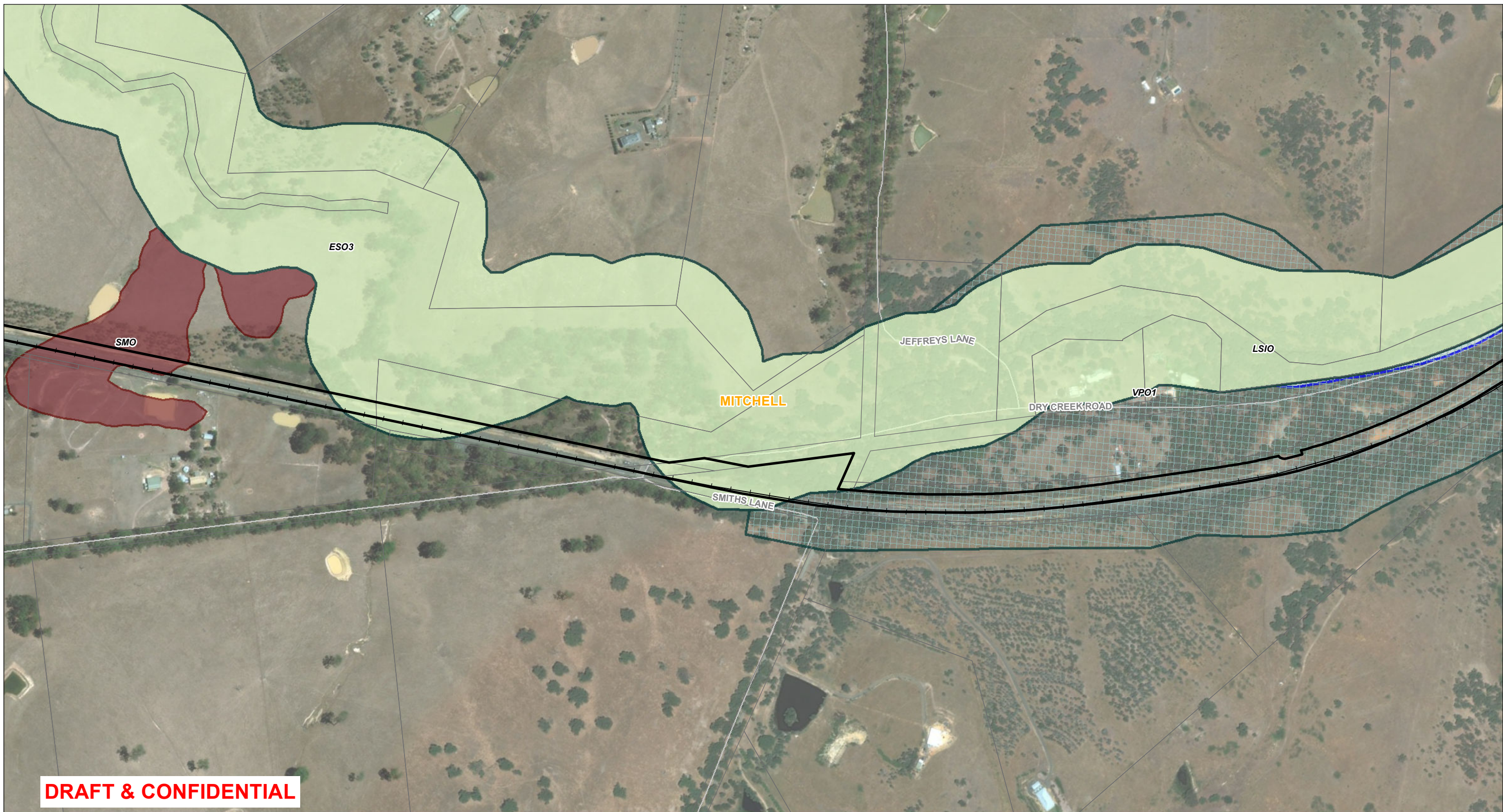
**AJM** Joint Venture  
**aurecon JACOBS**  
 MOTT MACDONALD

**Regional Rail Revival  
 North-East & Shepparton**



**Planning Overlays**

Drawing Number: NES-AJM-PWD-PWD-MAP-XLP-VIC-0419118		Revision: A.1	
Drawn By: R.Lancaster	Approved By: G. Whelan	Date: 12/09/2019	Map Size: A3



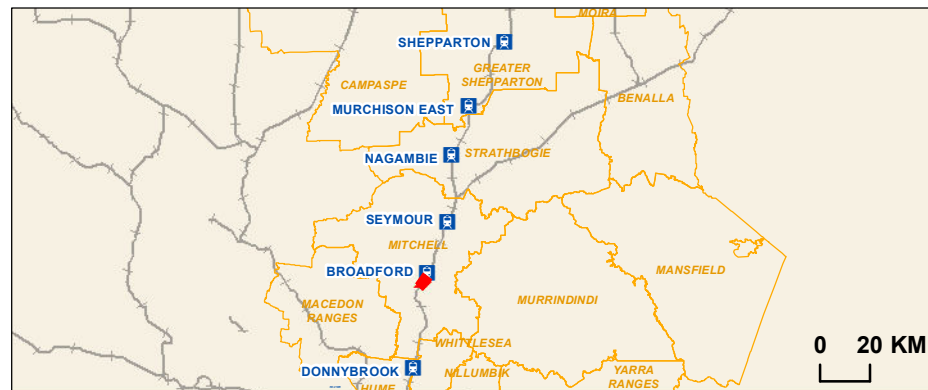


**DRAFT & CONFIDENTIAL**

-  Rail station
-  Railway
-  LGA
-  Cadastre
-  GC135 Project Land
-  ESO-Environmental Significance Overlay
-  VPO-Vegetation Protection Overlay
-  LSIO-Land Subject to Inundation Overlay
-  SMO-Salinity Management Overlay

**Map 12 of 69**

Data Sources:  
 AJM 2019  
 Advisian 2018  
 Vicmap 2018  
 Basemap: ESRI 2018

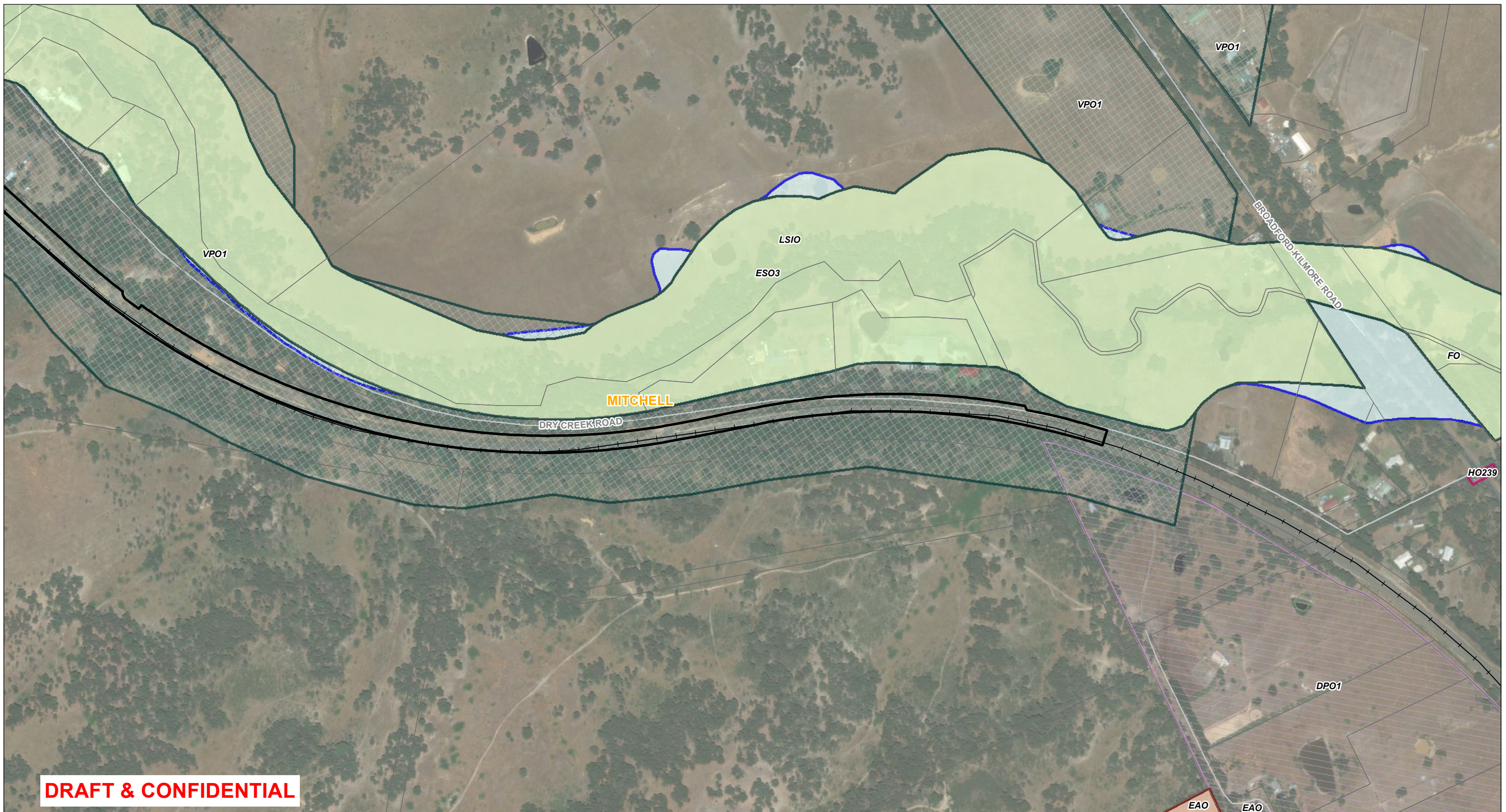


**Regional Rail Revil**  
**North-East & Shepparton**


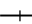










Planning Overlays

Drawing Number:		Revision:	
NES-AJM-PWD-PWD-MAP-XLP-VIC-0419118		A.1	
Drawn By:	Approved By:	Date:	Map Size:
R.Lancaster	G. Whelan	12/09/2019	A3

0 100 200  
 Metres  
 Coordinate System: GDA 1994 MGA Zone 55

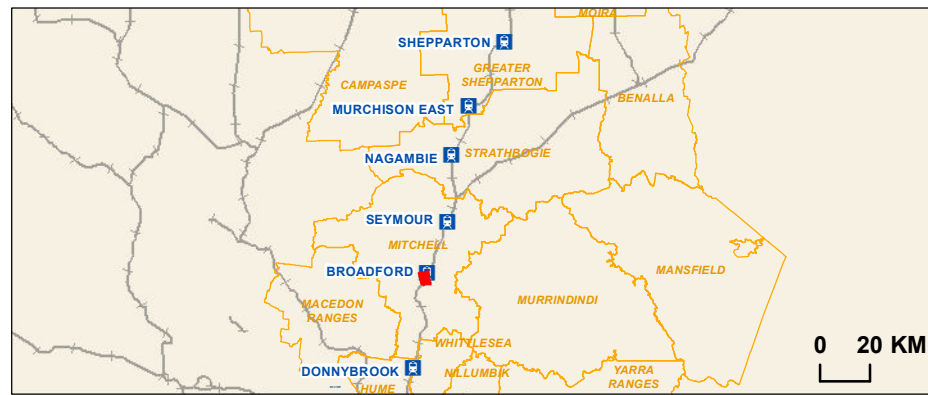


**DRAFT & CONFIDENTIAL**

-  Rail station
-  Railway
-  LGA
-  Cadastre
-  GC135 Project Land
-  EAO-Environmental Audit Overlay
-  ESO-Environmental Significance Overlay
-  VPO-Vegetation Protection Overlay
-  DPO-Development Plan Overlay
-  HO-Heritage Overlay
-  FO-Floodway Overlay
-  LSIO-Land Subject to Inundation Overlay

**Map 13 of 69**

Data Sources:  
 AJM 2019  
 Advisian 2018  
 Vicmap 2018  
 Basemap: ESRI 2018

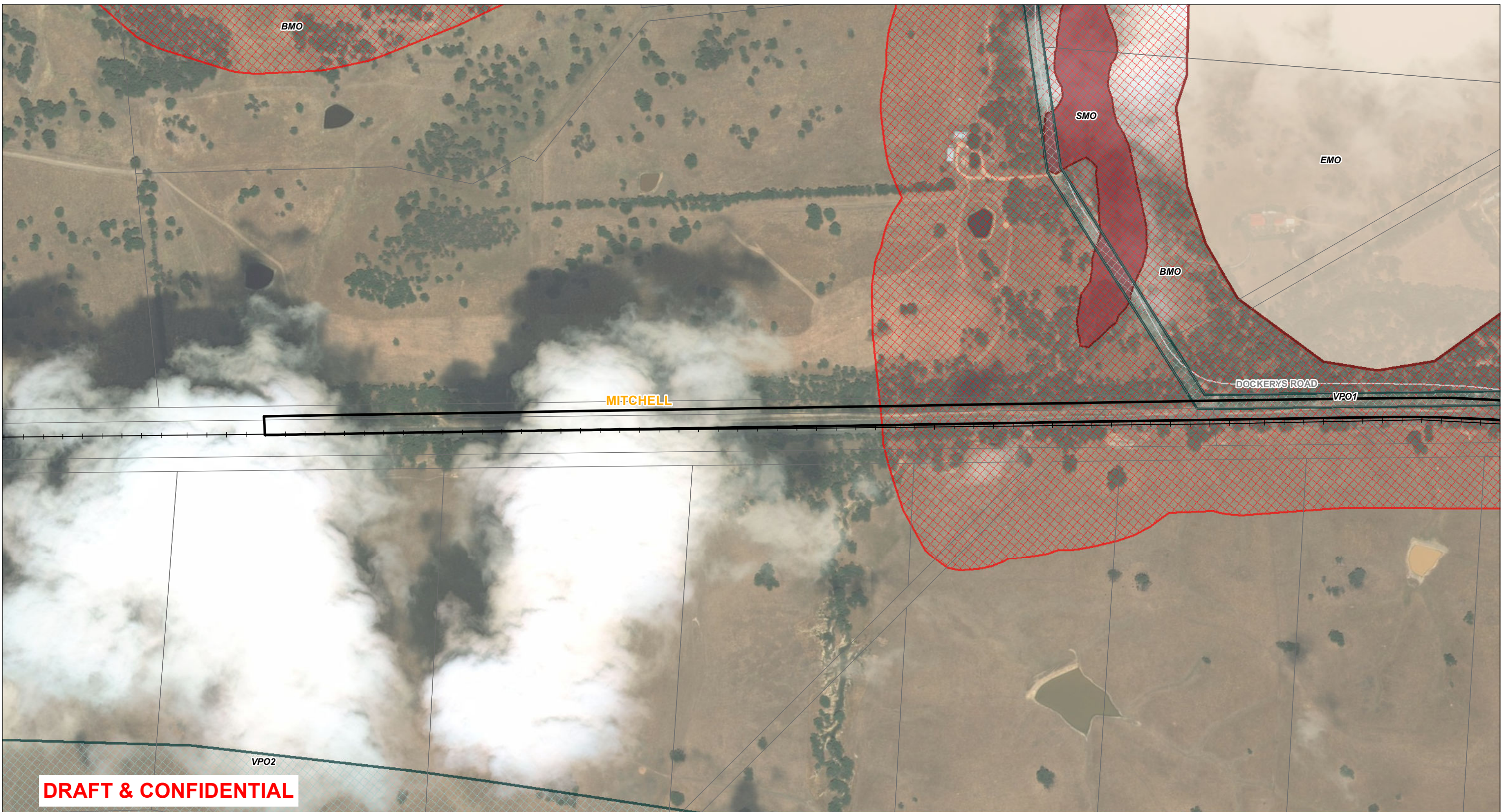


**Regional Rail Revival**  
**North-East & Shepparton**

Planning Overlays

Drawing Number:		Revision:	
NES-AJM-PWD-PWD-MAP-XLP-VIC-0419118		A.1	
Drawn By:	Approved By:	Date:	Map Size:
R.Lancaster	G. Whelan	12/09/2019	A3

0 100 200  
 Metres  
 Coordinate System: GDA 1994 MGA Zone 55

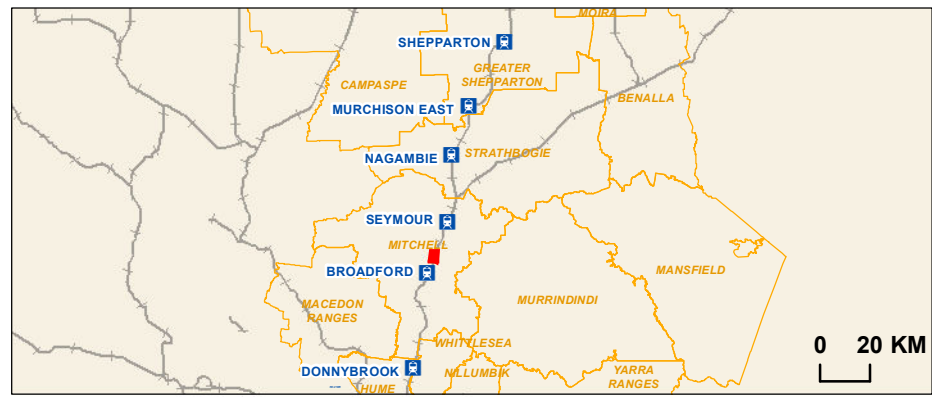


**DRAFT & CONFIDENTIAL**

- Rail station
- Railway
- LGA
- Cadastre
- GC135 Project Land
- VPO-Vegetation Protection Overlay
- BMO-Bushfire Management Overlay
- EMO-Erosion Management Overlay
- SMO-Salinity Management Overlay

**Map 14 of 69**

Data Sources:  
 AJM 2019  
 Advisian 2018  
 Vicmap 2018  
 Basemap: ESRI 2018



**Regional Rail Revival**  
**North-East & Shepparton**

Planning Overlays

Drawing Number:		Revision:	
NES-AJM-PWD-PWD-MAP-XLP-VIC-0419118		A.1	
Drawn By:	Approved By:	Date:	Map Size:
R.Lancaster	G. Whelan	12/09/2019	A3

0 100 200  
 Metres  
 Coordinate System: GDA 1994 MGA Zone 55



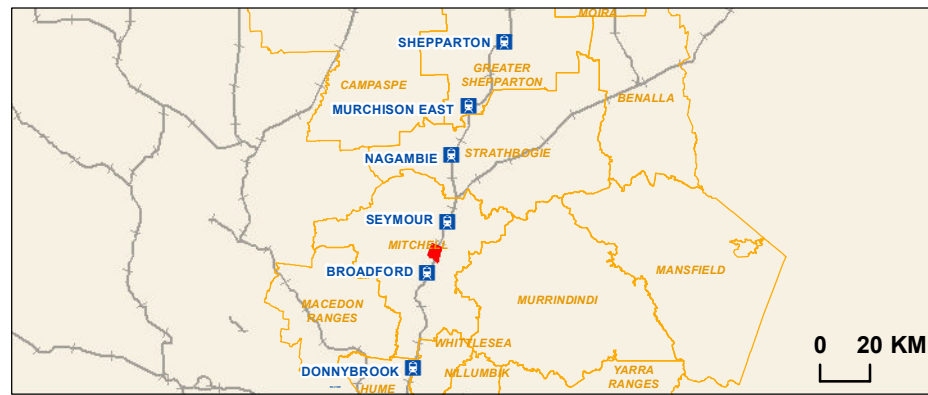
**DRAFT & CONFIDENTIAL**

VPO2

- Rail station
- Railway
- LGA
- Cadastre
- GC135 Project Land
- VPO-Vegetation Protection Overlay
- BMO-Bushfire Management Overlay
- EMO-Erosion Management Overlay

**Map 15 of 69**

Data Sources:  
 AJM 2019  
 Advisian 2018  
 Vicmap 2018  
 Basemap: ESRI 2018

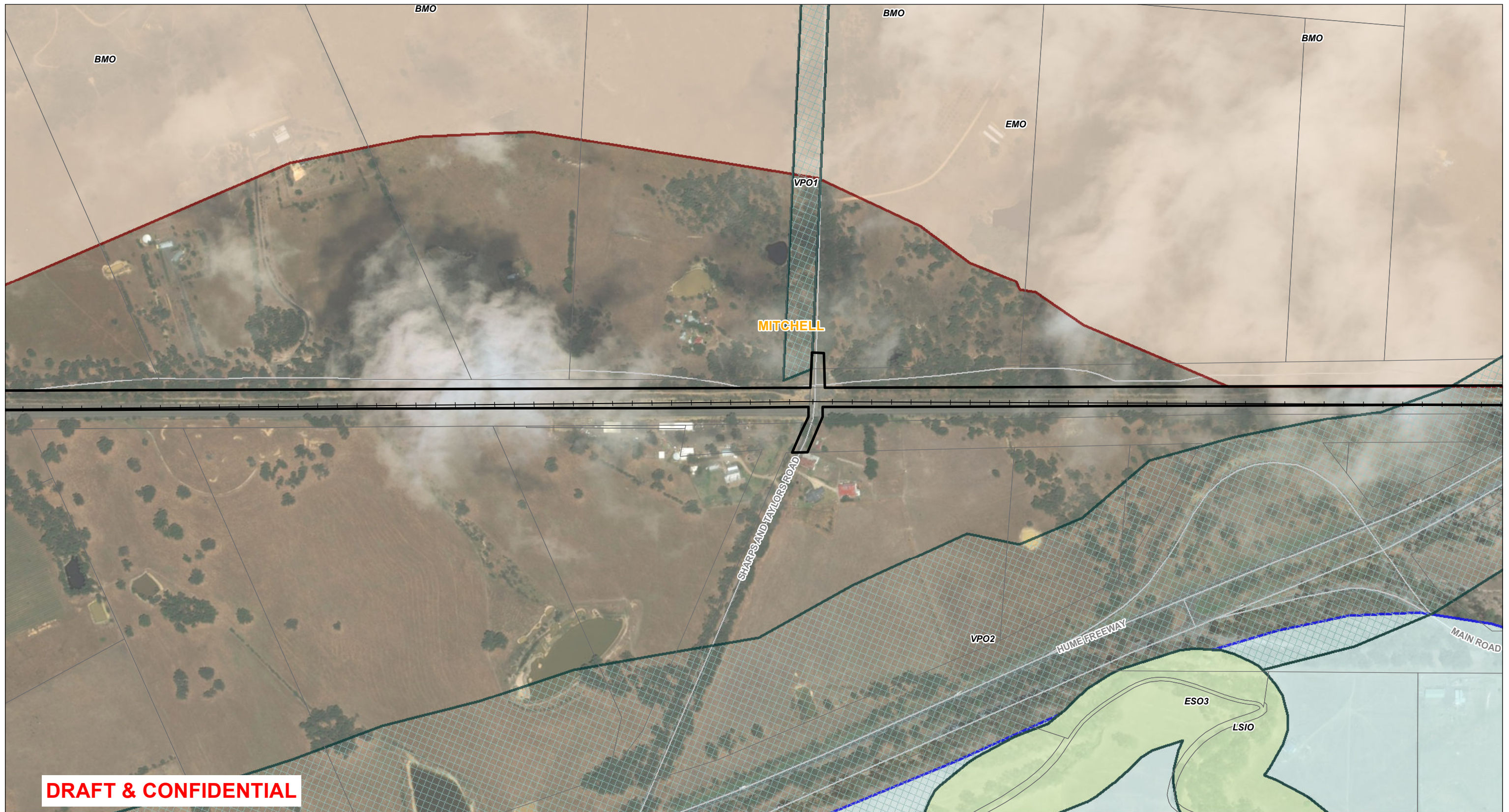


**Regional Rail Revival**  
**North-East & Shepparton**

Planning Overlays

Drawing Number:		Revision:	
NES-AJM-PWD-PWD-MAP-XLP-VIC-0419118		A.1	
Drawn By:	Approved By:	Date:	Map Size:
R.Lancaster	G. Whelan	12/09/2019	A3

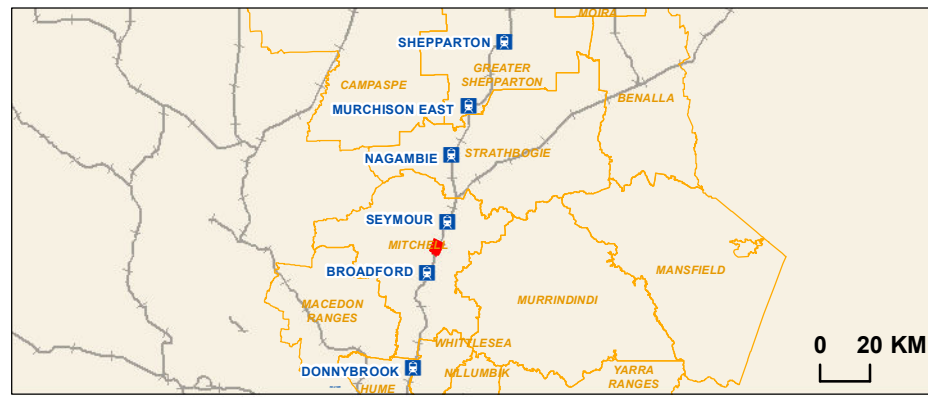
0 100 200  
 Metres  
 Coordinate System: GDA 1994 MGA Zone 55



- Rail station
- Railway
- LGA
- Cadastre
- GC135 Project Land
- ESO-Environmental Significance Overlay
- VPO-Vegetation Protection Overlay
- BMO-Bushfire Management Overlay
- EMO-Erosion Management Overlay
- LSIO-Land Subject to Inundation Overlay

**Map 16 of 69**

Data Sources:  
 AJM 2019  
 Advisian 2018  
 Vicmap 2018  
 Basemap: ESRI 2018



Joint Venture

**Regional Rail Revival**  
**North-East & Shepparton**

Planning Overlays

Drawing Number:		Revision:	
NES-AJM-PWD-PWD-MAP-XLP-VIC-0419118		A.1	
Drawn By:	Approved By:	Date:	Map Size:
R.Lancaster	G. Whelan	12/09/2019	A3

Coordinate System: GDA 1994 MGA Zone 55

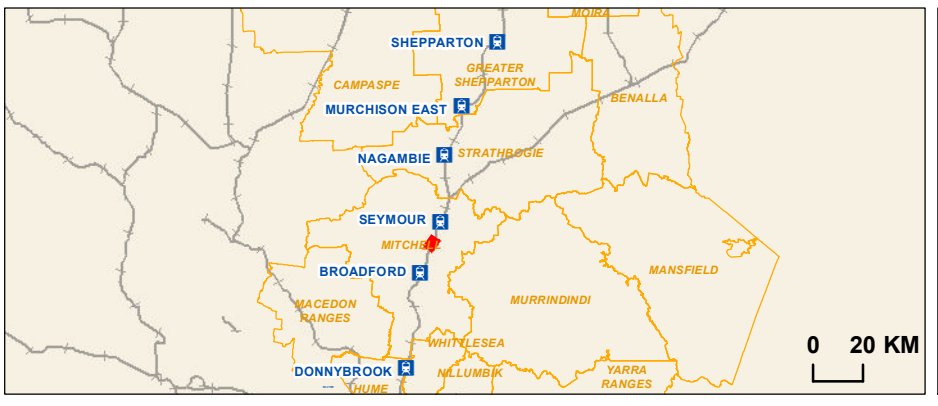




- Rail station
- Railway
- LGA
- Cadastre
- GC135 Project Land
- ESO-Environmental Significance Overlay
- VPO-Vegetation Protection Overlay
- HO-Heritage Overlay
- BMO-Bushfire Management Overlay
- EMO-Erosion Management Overlay
- LSIO-Land Subject to Inundation Overlay

**Map 17 of 69**

Data Sources:  
 AJM 2019  
 Advisian 2018  
 Vicmap 2018  
 Basemap: ESRI 2018



**Regional Rail Revil  
North-East & Shepparton**

Planning Overlays

Drawing Number:		Revision:	
NES-AJM-PWD-PWD-MAP-XLP-VIC-0419118		A.1	
Drawn By:	Approved By:	Date:	Map Size:
R.Lancaster	G. Whelan	12/09/2019	A3

0 100 200

Metres

Coordinate System: GDA 1994 MGA Zone 55