

# Warracknabeal Energy Park

---

Referral under the *Environment Effects Act 1978*

Attachment C: Site photos



## DOCUMENT HISTORY and STATUS

The following table outlines the revisions made to this document.

Date of Issue	Description	Issued By	Reviewed by	Approved by
14/12/2022	Draft issue	Thomas J Walker	Kyle Sandona	Kyle Sandona
28/03/2023	Issued for submission	Thomas J Walker	Kyle Sandona	Kyle Sandona

Warracknabeal Energy Park Pty Ltd

ACN 653 509 392

Office 4 Nexus Centre

17 Goode Street

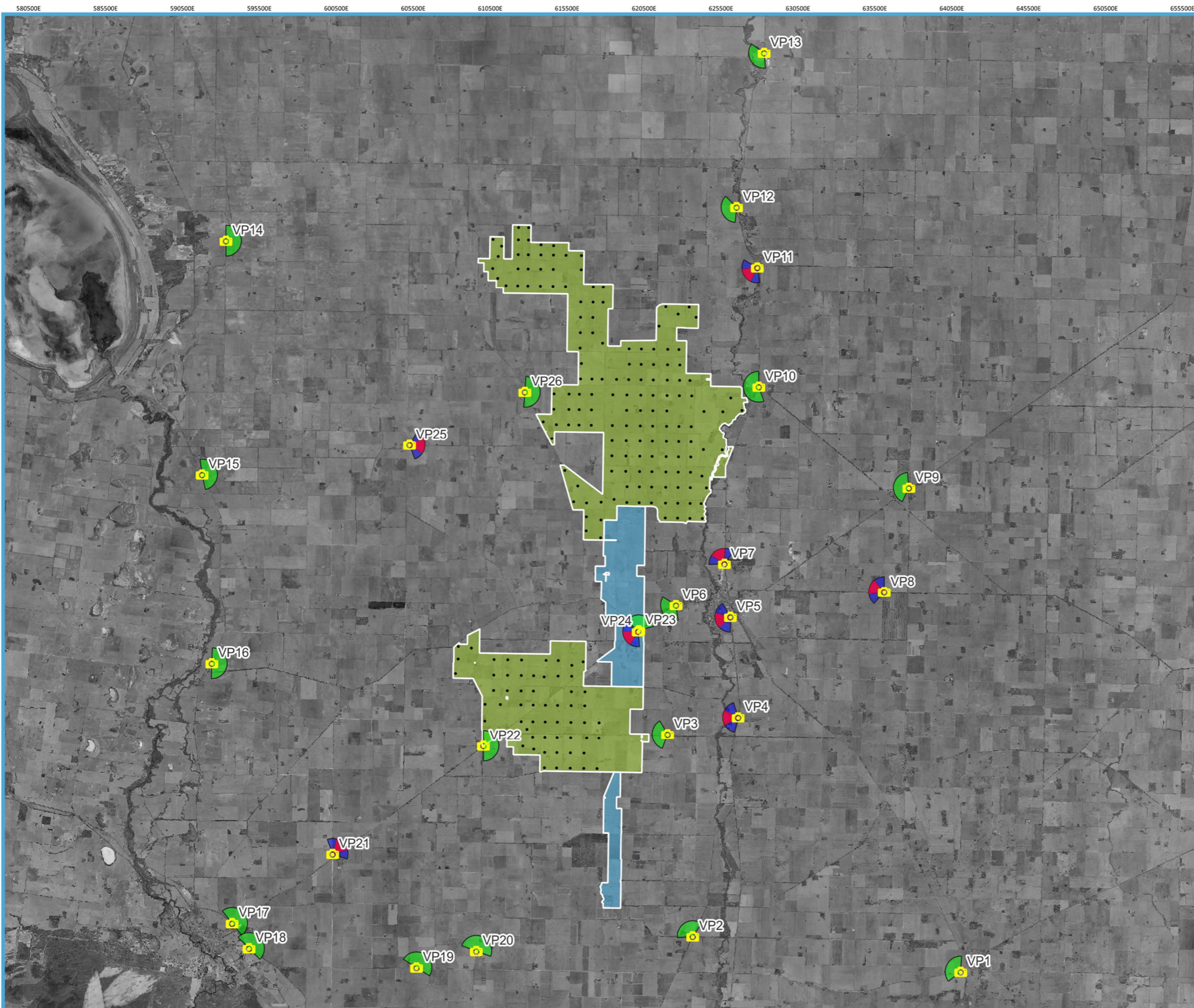
Gisborne VIC 3437 Australia

T +61 3 5421 9999

E [info@warracknabealenergypark.com.au](mailto:info@warracknabealenergypark.com.au)

W [www.warracknabealenergypark.com.au](http://www.warracknabealenergypark.com.au)



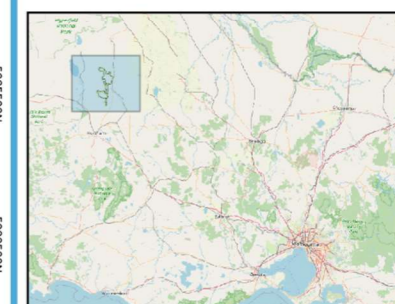


# Warracknabeal Energy Park

## Photomontage Viewpoints

### Legend

- Wind Farm Boundary
- Indicative Easement Corridor
- WTG



Workspace: WAEP\_Pln\_ViewPoints\_V01\_04  
 Layout Name: WAEP\_Pln\_ViewPoints  
 Layout Version: v01\_04  
 Paper Size: A3  
 Scale: 230000  
 Date: 2022.12.14  
 Drawn By: Thomas Walker  
 QGIS Version: 32403  
 CRS: EPSG:7854







VP1 - Donald-Murtoa Road, west of Minyip



VP2 - Junction Henty Highway & Minyip-Dimboola Road





VP3 - Ailsa Road, west of Inksters Road



VP4 - Henty Highway#1, outside Warracknabeal aerodrome





VP5 - Henty Highway#2, south of Warracknabeal



VP6 - Borung Highway #1 – west of Warracknabeal





VP7 - Henty Highway #3 – north of Warracknabeal



VP8 - Borung Highway #2 – east of Warracknabeal





VP9 - Warracknabeal-Birchip Road, north east of Warracknabeal



VP10 - Henty Highway #4, at Lah, north of Warracknabeal





VP11 - Henty Highway #5, intersection of Wardles Road West



VP12 - Henty Highway #6





VP13 - Henty Highway #7, at Beulah



VP14 - Dimboola Rainbow Road # 1, east of Lake Hindmarsh





VP15 - Dimboola Rainbow Road # 2, south east of Lake Hindmarsh



VP16 - Dimboola Rainbow Road # 3, at Antwerp





VP17 - Western Highway #1, north of the Borung Highway intersection at Dimboola



VP18 - Western Highway #2, south of the Borung Highway intersection at Dimboola





VP19 - Old Minyip Road, east of Dimboola



VP20 - Blue Ribbon Road, north of Old Minyip Road and the Sailors Home Hall





VP21 - Borung Highway #3, intersection with Katyil-Wail Road



VP22 - Borung Highway #4, intersection with Blue Ribbon Road





VP23 - Borung Highway #5, looking north



VP24 - Borung Highway #6, looking south west towards the Murra Warra Wind Farm





VP25 - Jeparit-Warracknabeal Road, north west of Warracknabeal



VP26 - Rainbow Road, north west of Warracknabeal