

Attachment 1 Maps

Figure 1 Kerang Lakes general location



Figure 2 Kerang Lakes – local setting

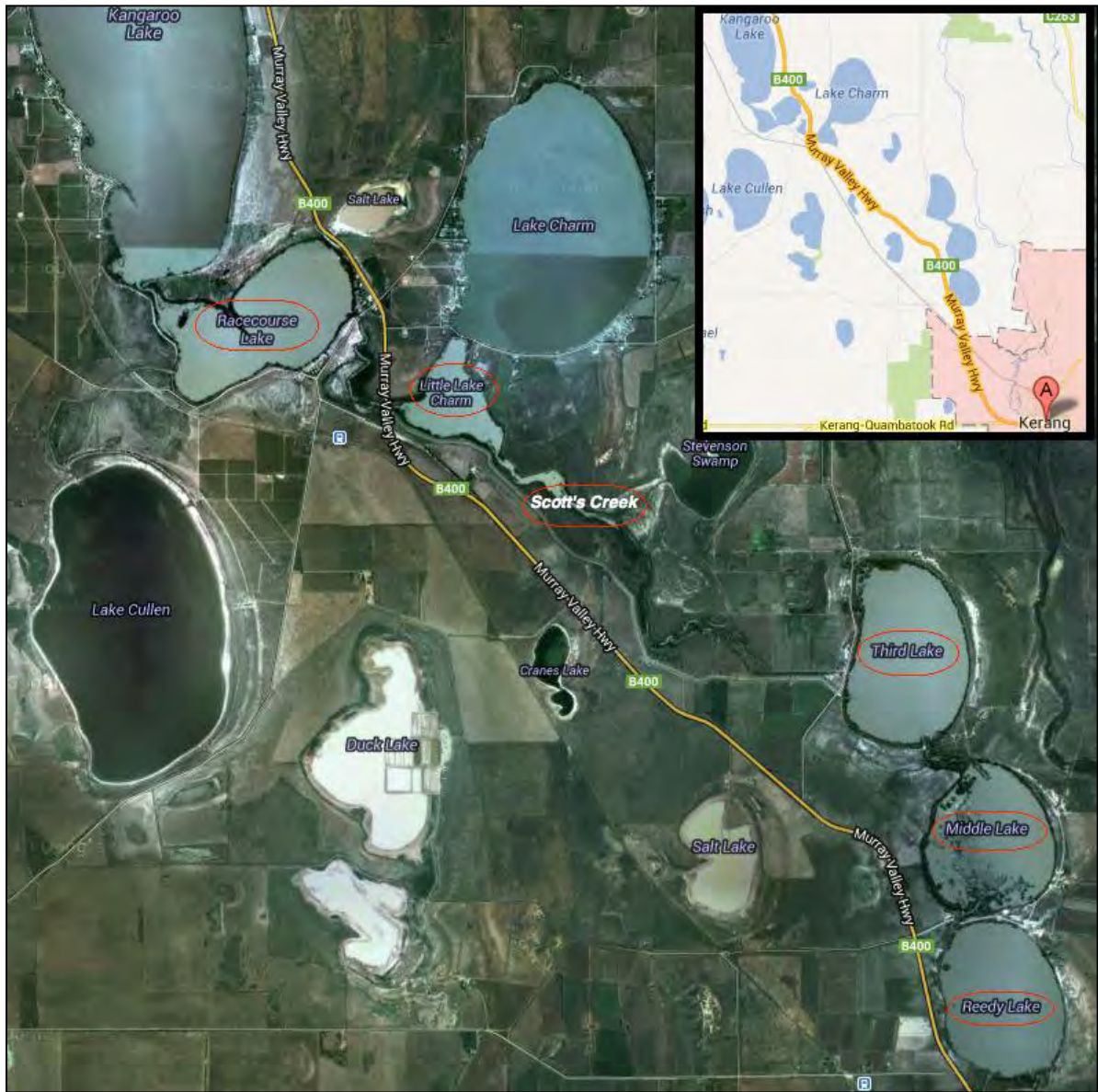


Figure 3 Kerang Lakes – aerial oblique showing general features (looking north)

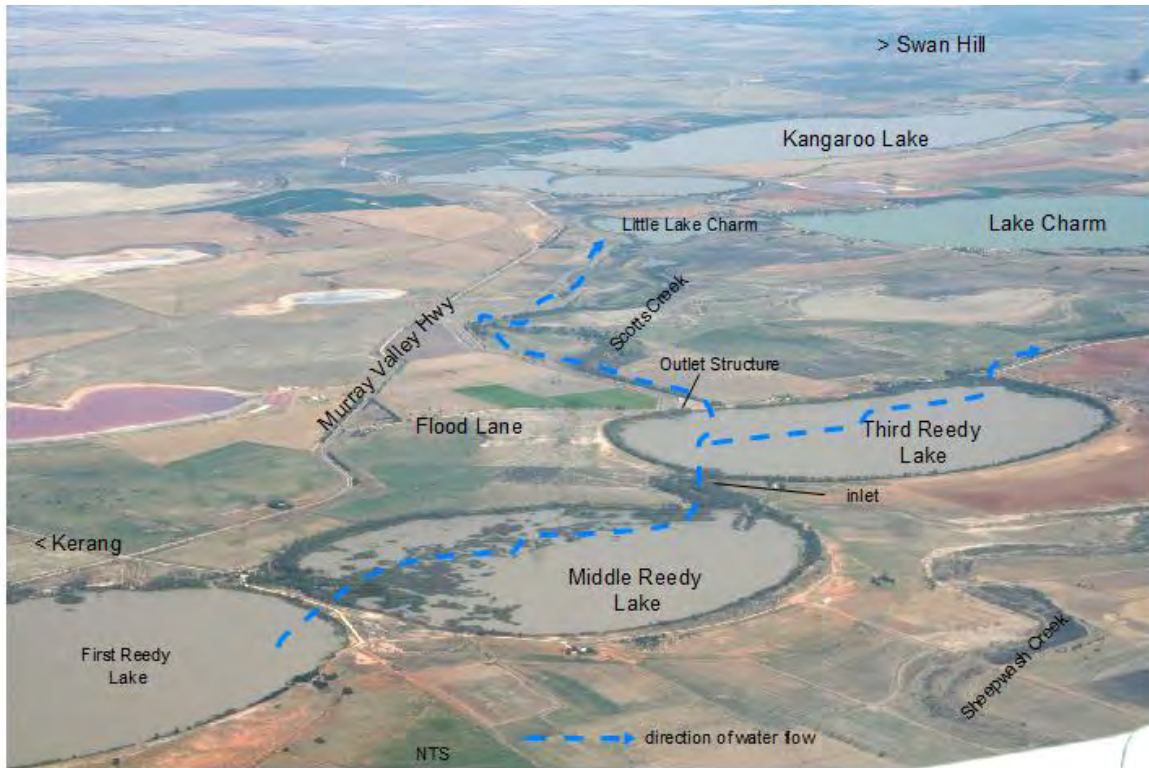
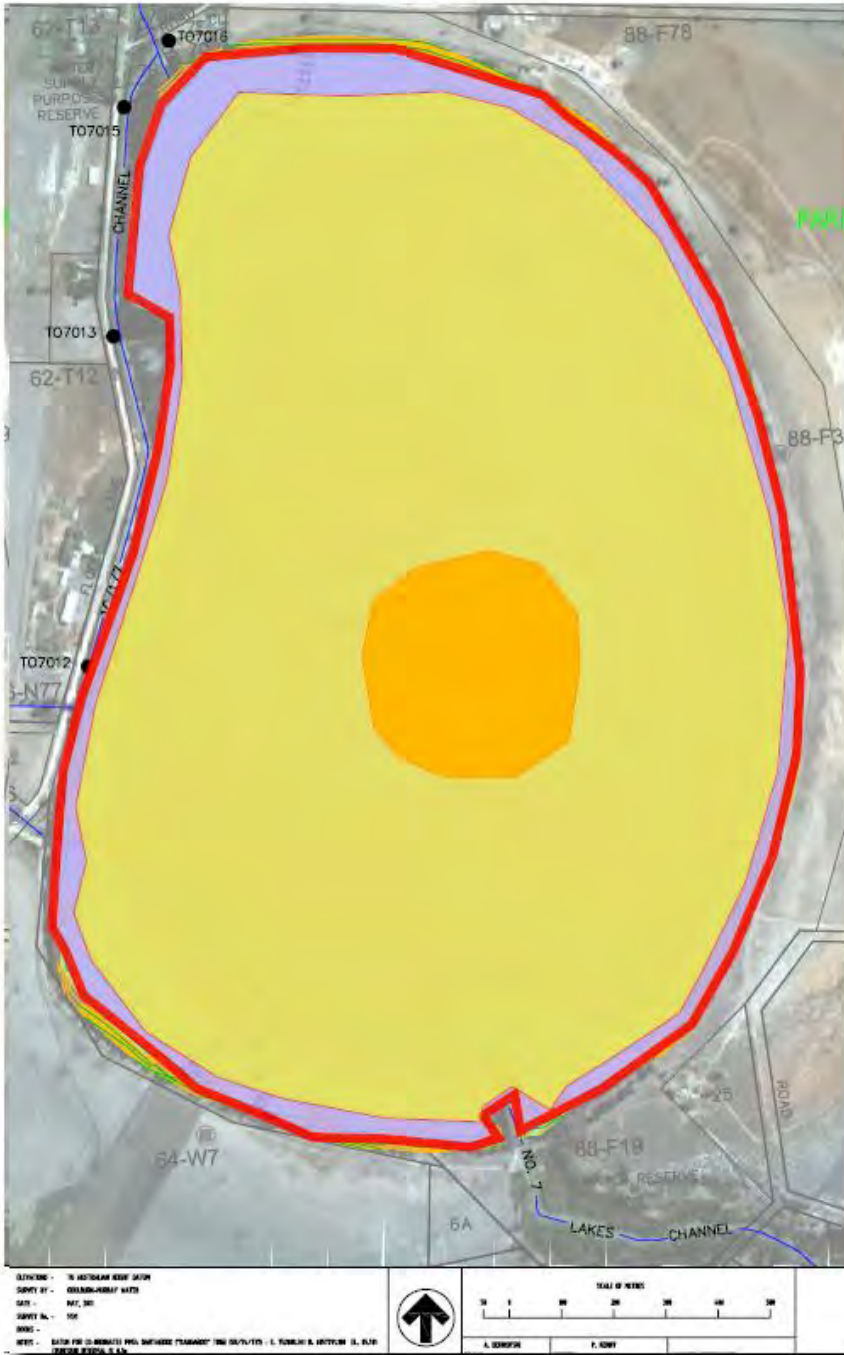


Figure 4 Third Reedy Lake – main features of proposal



Figure 5 Third Reedy Lake – area inundated at 74.56 (full), 74.0 (full phase 2), 73.2



Third Reedy Lake
 Area inundated
 (approx)
 purple 74.56 mAHd
 Yellow 74.0 mAHd
 Orange 73.2 mAHd

Figure 6 Kerang Lakes – land use

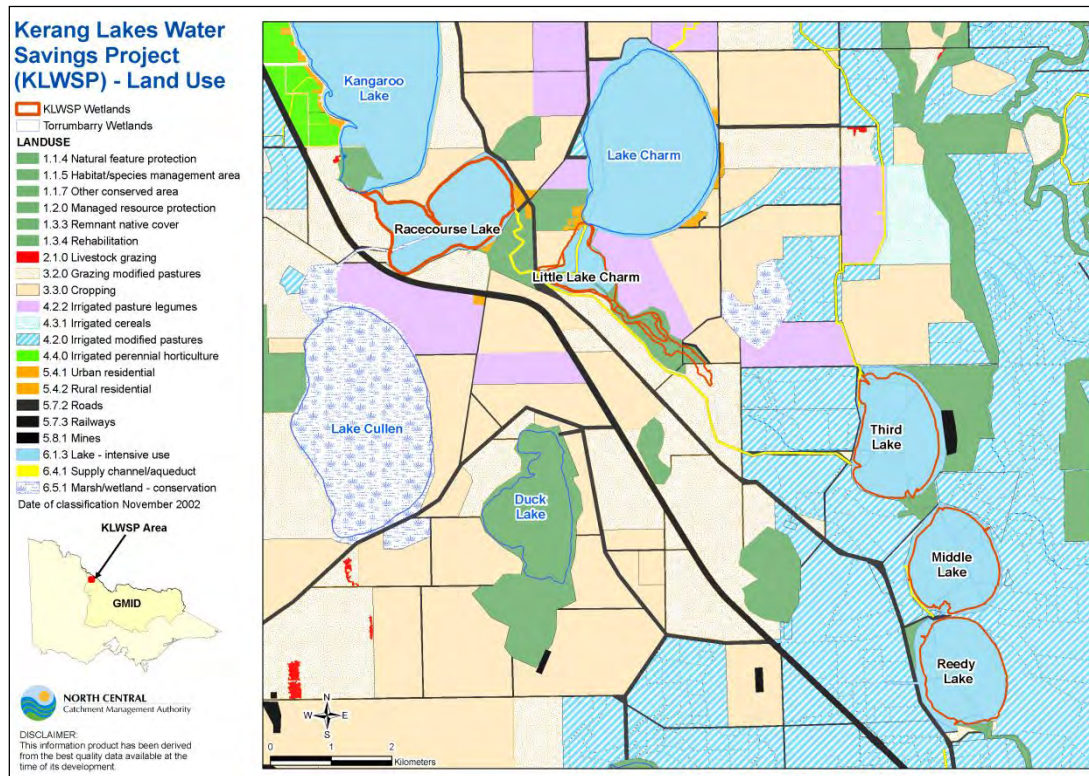


Figure 7: Gannawarra Planning Scheme – PCRZ Overlay around Third Reedy Lake

Third Reedy Lake Bypass

GOULBURN-MURRAY WATER



IR204999

 12 Jan 2016

GOULBURN-MURRAY WATER

 80 CASEY STREET (PO BOX 565)

 TRARALGAN VIC 3646

 Ph (03) 5463 1500 Fax (03) 5431 8677

 gms@gmw.com.au

Legend

PCRZ	Channel	Semi-Major Road
Structure	Pipeline	Minor Road
Town - Major	Freeway	2WD
Town - Minor	Highway	4WD
	Major Road	Property Parcel

SCALE AT A1 1:10,000

0 50 100 200 Meters

The content of this product is provided for information purposes only. No claim is made as to the accuracy of authenticity of the content of the product. In no event will G-MW, its agents, instrumentalities and employees be liable for the accuracy of the information contained within this product nor its use of reliance placed on it. The information used within this product is provided on the basis that all persons accessing the information undertake responsibility for assessing the relevance and accuracy of its content.

Z:\2016_Products\IR204999\042014999 A4-1 Third Reedy Lake Bypass.mxd

Figure 9: Gannawarra Planning Scheme – Land Subject to Inundation Overlay (LSIO) around Third Reedy Lake

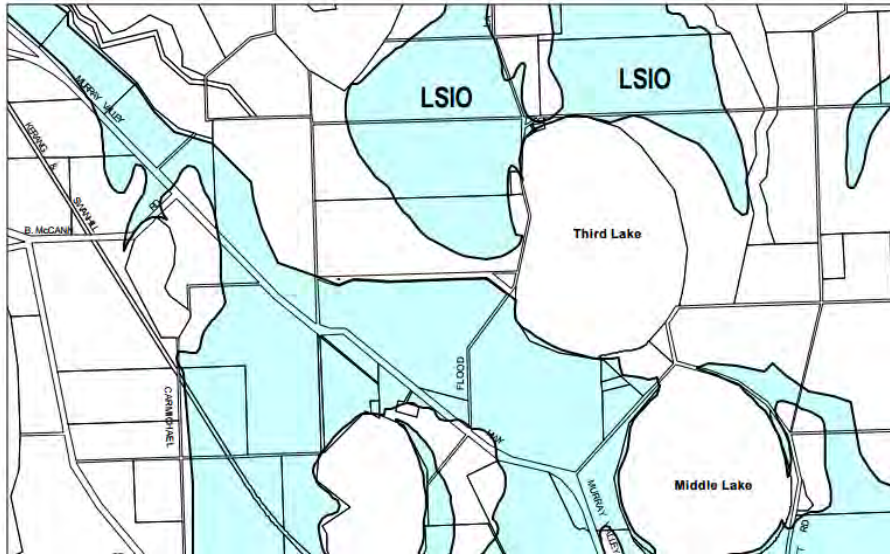


Figure 10: Gannawarra Planning Scheme – Rural Floodway Overlay (RFO) around Third Reedy Lake

